

## OBJECTIVE OF SRI PROGRAM

TO DETERMINE THE EXTENT TO WHICH INDIVIDUALS OBTAIN ACCURATE INFORMATION ABOUT THEIR ENVIRONMENT UNDER CONDITIONS THOUGHT TO BE SECURE AGAINST ACCESS AND WITHOUT THE USE OF KNOWN PERCEPTUAL MODALITIES.

### APPLIED RESEARCH

EXPLORE OPERATIONAL UTILITY

### BASIC RESEARCH

- (A) IDENTIFY CHARACTERISTICS OF INDIVIDUALS POSSESSING SUCH ABILITIES
  - (B) DETERMINE BASIC MECHANISMS INVOLVED IN SUCH FUNCTIONING
-

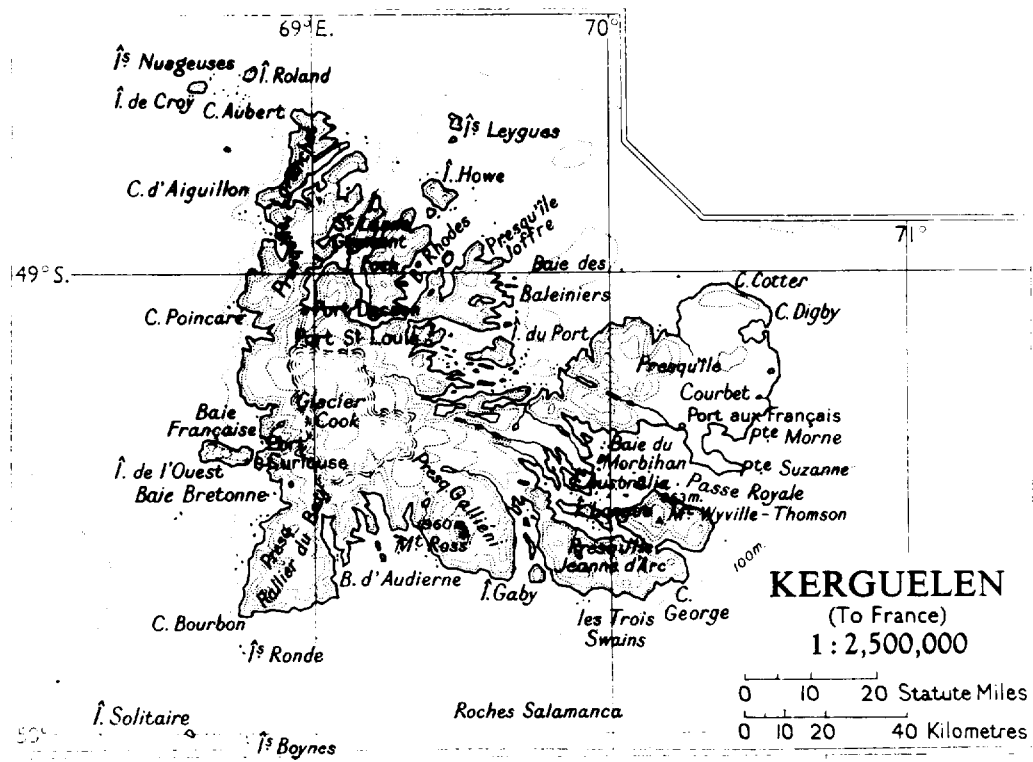
This document is made available through the declassification efforts  
and research of John Greenewald, Jr., creator of:

# The Black Vault

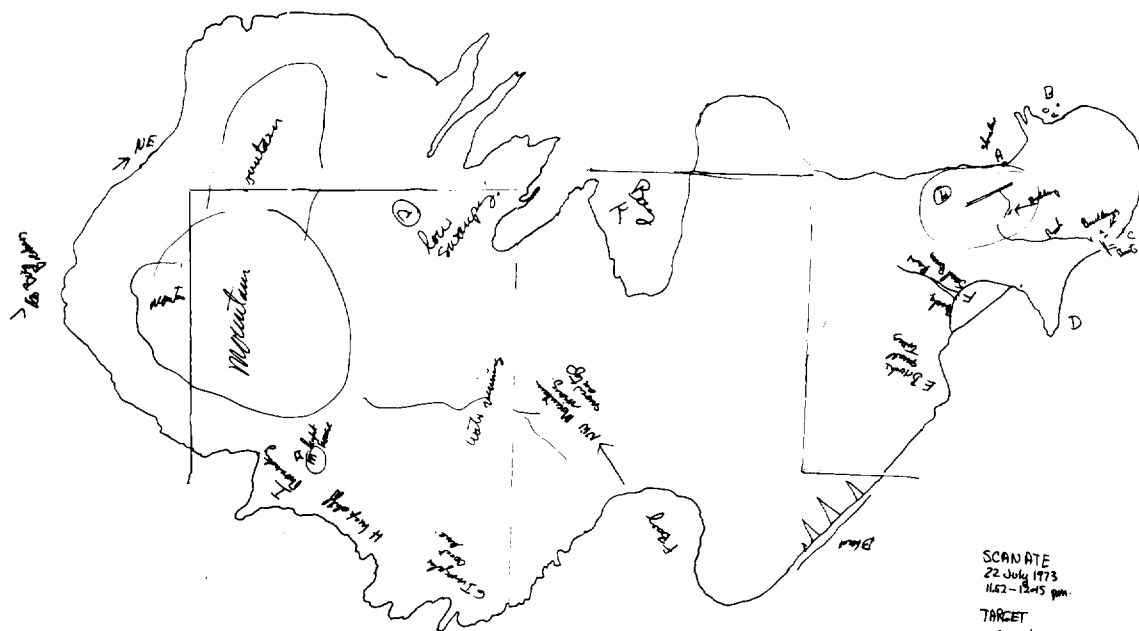


The Black Vault is the largest online Freedom of Information Act (FOIA)  
document clearinghouse in the world. The research efforts here are  
responsible for the declassification of hundreds of thousands of pages  
released by the U.S. Government & Military.

**Discover the Truth** at: <http://www.theblackvault.com>



KERGUELEN ISLAND



SA-4540-5

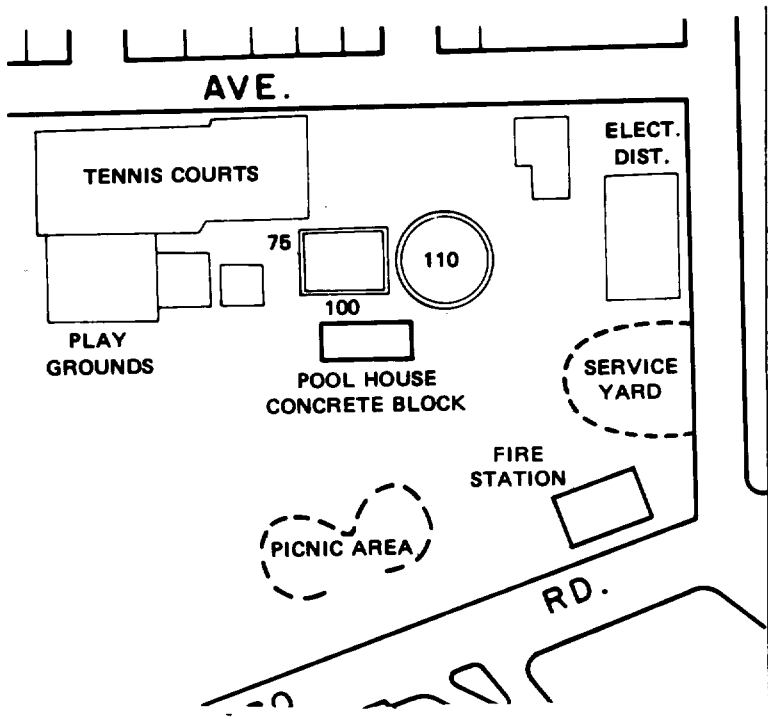
DRAWING BY SWANN OF KERGUELEN ISLAND

SG1A

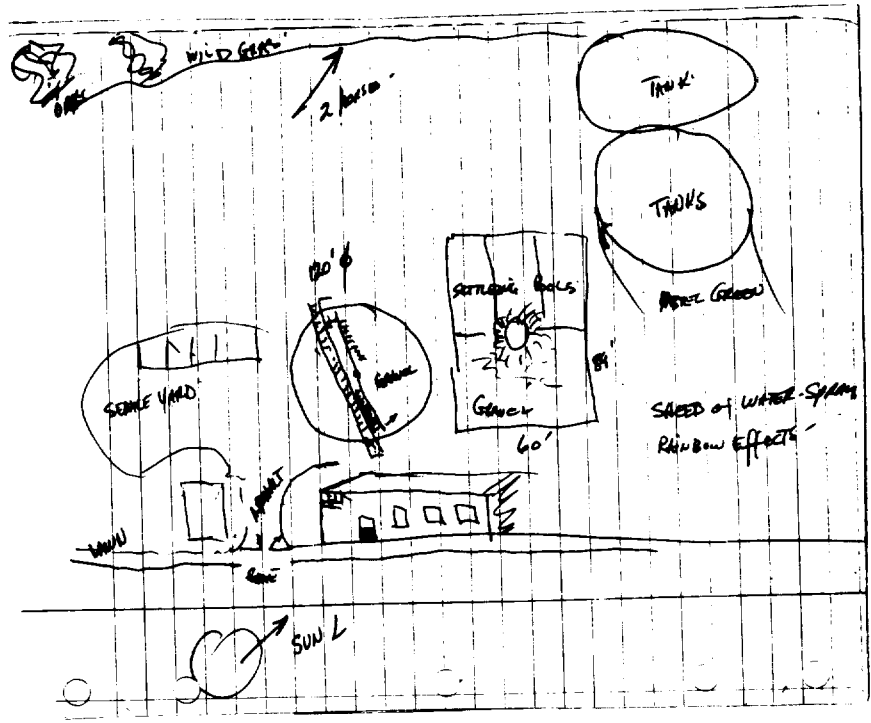
Next 12 Page(s) In Document Exempt

Distribution of Rankings Assigned to Transcripts Associated  
with Each Target Location for Experienced Subject Price (S1)

Target Location	Distance (km)	Rank of Associated Transcript
Hoover Tower, Stanford	3.4	1
Baylands Nature Preserve, Palo Alto	6.4	1
Radio telescope, Portola Valley	6.4	1
Marina, Redwood City	6.8	1
Bridge toll plaza, Fremont	14.5	6
Drive-in theater, Palo Alto	5.1	1
Arts and Crafts Plaza, Menlo Park	1.9	1
Catholic Church, Portola Valley	8.5	3
Swimming pool complex, Palo Alto	3.4	1
Total sum of ranks		16 ( $p=2.9 \times 10^{-5}$ )



(a)



(b)

TA-760525-1

FIGURE 3 SWIMMING POOL COMPLEX AS REMOTE VIEWING TARGET  
(a) City map of target location, (b) Drawing by Price (S1).

**SECRET**

S E C R E T

PROGRAM RESULTS--APPLIED RESEARCH EFFORT

<u>TARGET</u>	<u>SUBJECT</u>	<u>RESULTS</u>
1. LONG-DISTANCE REMOTE VIEWING		
<u>SPONSOR-DESIGNATED TARGETS</u>		
WEST VIRGINIA	S3	MAP (SPONSOR-VERIFIED)
WEST VIRGINIA	S1	CODEWORDS (SPONSOR-VERIFIED)
URALS	S1	DESCRIPTION (SPONSOR-VERIFIED)
SEMIPALATINSK, USSR	S1	DRAWINGS (SPONSOR-VERIFIED)
<u>SRI-DESIGNATED TARGETS</u>		
COSTA RICA SERIES	S1,S4	SUCCESSFUL MATCHING: P = 0.02
2. SHORT-DISTANCE REMOTE VIEWING		
<u>SPONSOR-DESIGNATED TARGET</u>		
CIPHER MACHINE ANALOG	S3	SUCCESSFUL
<u>SRI-DESIGNATED TARGETS</u>		
TECHNOLOGY SERIES	S2,S3,S4	SUCCESSFUL MATCHING: SPONSOR P < 0.04 SUBJECTS
3. DETECTION OF SECRET WRITING TARGET MATERIAL	S1	SORTING PROCEDURE PROMISING: 19/27 LABELED, 13 CORRECT

S E C R E T

**SECRET**

PROGRAM RESULTS--BASIC RESEARCH EFFORT (CONTINUED)

D. IDENTIFICATION OF THE NATURE OF PARANORMAL PHENOMENA  
AND ENERGY

1. EXPERIMENTS WITH PHYSICAL APPARATUS

- |                                                                     |                         |
|---------------------------------------------------------------------|-------------------------|
| A. GEIGER COUNTER                                                   | NONSIGNIFICANT          |
| B. LASER-MONITORED<br>TORSION PENDULUM                              | NONSIGNIFICANT          |
| C. SUPERCONDUCTING<br>DIFFERENTIAL<br>MAGNETOMETER<br>(GRADIOMETER) | SUCCESSFUL: $P = 0.004$ |

2. POSSIBLE MECHANISMS      TWO THEORIES (ELF, QM)

3. COMMUNICATION THEORY      S/N RATIO IMPROVEMENT BY  
APPROACH TO CHANNEL      REDUNDANCY CODING (SUCCESSFULLY  
UTILIZATION      APPLIED, SW)



PROGRAM RESULTS--BASIC RESEARCH EFFORT (CONTINUED)

B. IDENTIFICATION OF CHARACTERISTICS POSSESSED BY GIFTED SUBJECTS

1. MEDICAL EVALUATION      NO CORRELATES
2. PSYCHOLOGICAL              POSSIBLE CORRELATES  
   EVALUATION
3. NEUROPSYCHOLOGICAL      CHARACTERISTICS COMPATIBLE WITH  
   EVALUATION                  RIGHT-HEMISPHERE SPECIALIZATION

C. IDENTIFICATION OF NEUROPHYSIOLOGICAL CORRELATES

1. REMOTE STROBE              SUCCESSFUL:  $P < 0.04$   
   EXPERIMENT
2. MONITORING OF              NO CORRELATES  
   PHYSIOLOGICAL  
   PARAMETERS DURING  
   ROUTINE EXPERIMENTA-  
   TION IN REMOTE VIEWING

PROGRAM RESULTS--BASIC RESEARCH EFFORT

A. SCREENING TESTS

1. REMOTE VIEWING OF SAN FRANCISCO BAY AREA TARGETS  
DESIGNATED BY TRAVELING TARGET TEAM

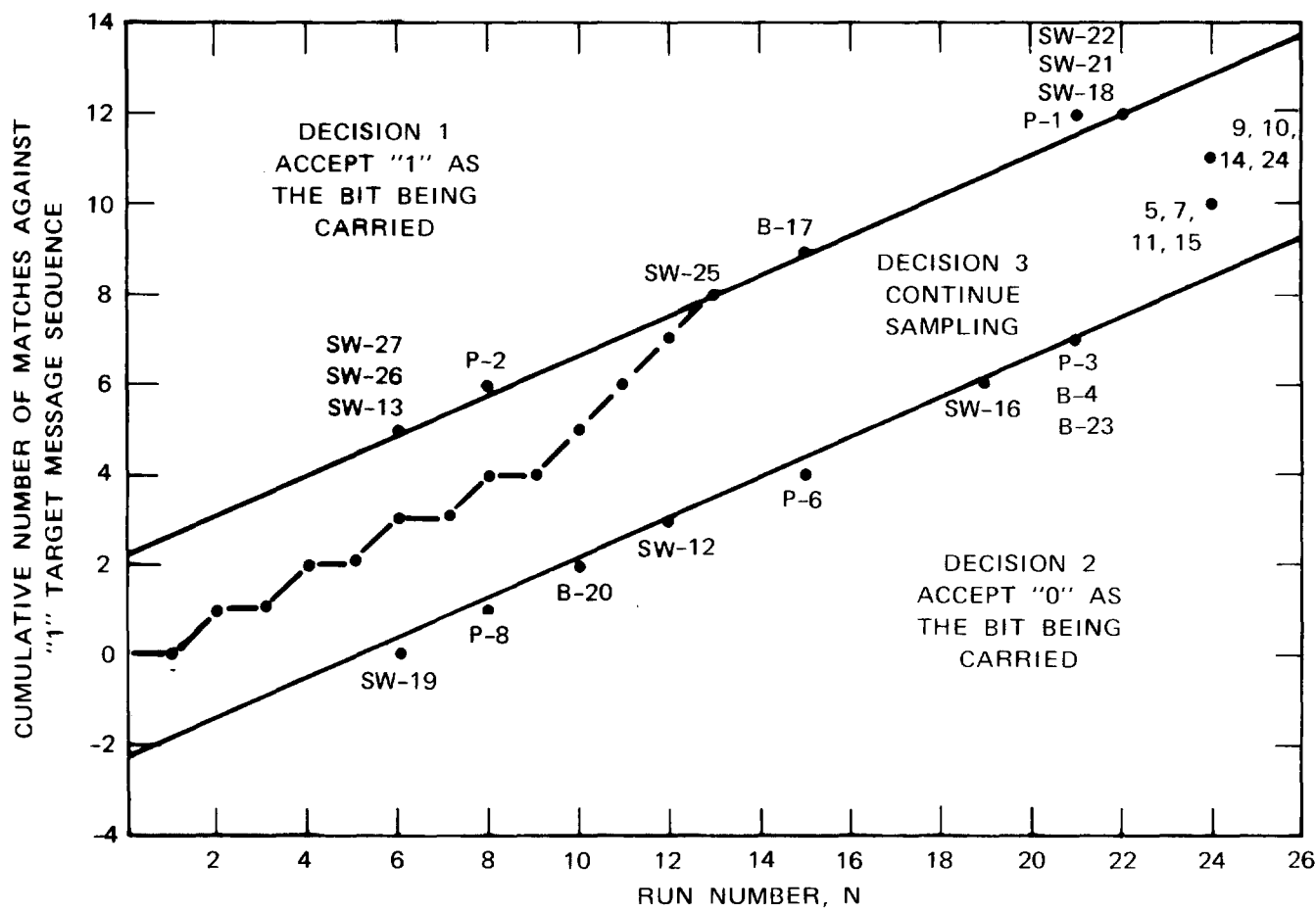
- A. EXPERIENCED SUBJECT S1 (9) SUCCESSFUL MATCHING:  $P = 2.9 \times 10^{-5}$
- B. LEARNER/CONTROL SUBJECT S4 (9) SUCCESSFUL MATCHING:  $P = 1.8 \times 10^{-6}$
- C. EXPERIENCED SUBJECTS S2 & S3 (8) SUCCESSFUL MATCHING:  $P = 3.8 \times 10^{-4}$
- D. LEARNER/CONTROL SUBJECTS S2 & S3 (8) NONSIGNIFICANT
- E. SPONSOR SUBJECTS (5) SUCCESSFUL MATCHING:  $P = 0.017$

2. FOUR-STATE ELECTRONIC RANDOM NUMBER GENERATOR  
(2500 TRIALS)

S2 SUCCESSFUL ORIGINAL SERIES:  $P = 3 \times 10^{-7}$   
REPLICATION SERIES:  $P = 4.8 \times 10^{-4}$   
INDEPENDENT VERIFICATION OF  
ANALYSIS BY SPONSOR

Distribution of Rankings Assigned to Subject Drawings  
Associated with Each Target Location

Subject	Target	Rank of Associated Drawings
S3, S4	Drill press	2
S2, S3, V3	Xerox machine	2
S4, V2	Video terminal	1
S3	Chart recorder	2
S4	Random number generator	6
S4	Machine shop	3
S3, S4	Typewriter	2
	Total sum of ranks	18 (p=0.036)



UPPER AND LOWER LIMIT LINES GIVEN BY:

$$\Sigma_1 = d_1 + SN,$$

$$\Sigma_0 = -d_0 + SN,$$

Where

$$d_1 = \frac{\log \frac{1-\beta}{\alpha}}{\log \frac{p_1(1-p_0)}{p_0(1-p_1)}}$$

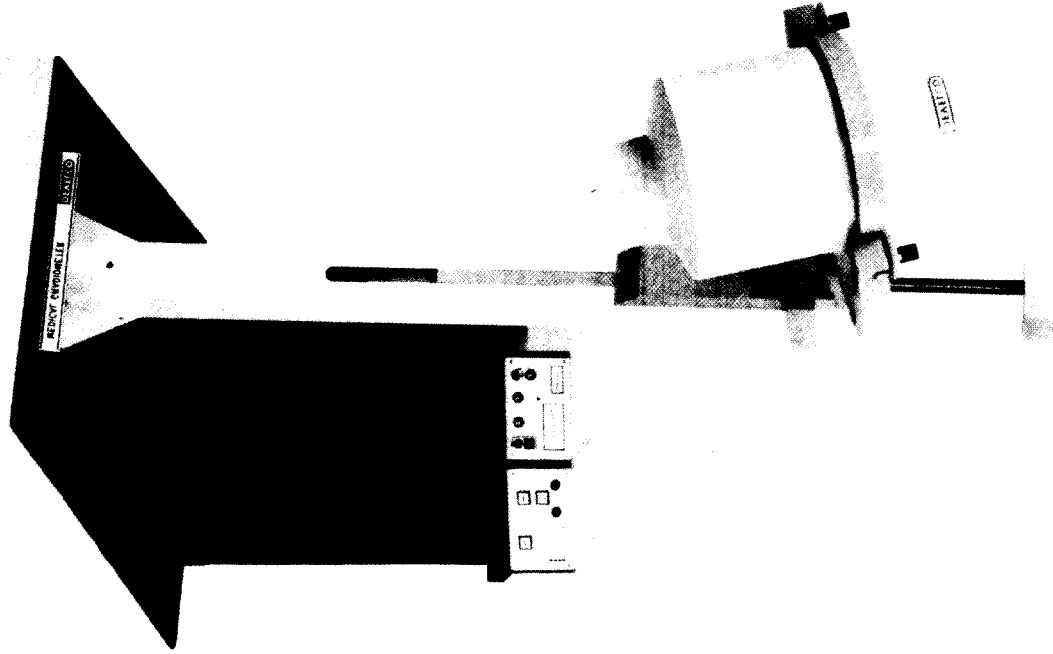
$$d_0 = \frac{\log \frac{1-\alpha}{\beta}}{\log \frac{p_1(1-p_0)}{p_0(1-p_1)}}$$

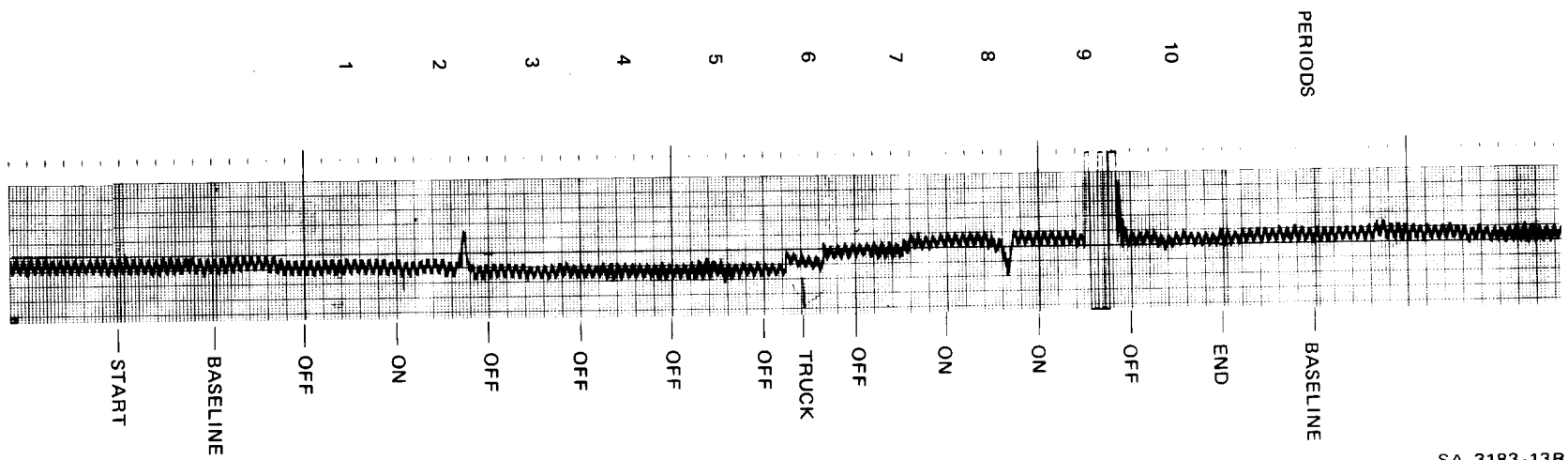
$$S = \frac{\log \frac{(1-p_0)}{(1-p_1)}}{\log \frac{p_1(1-p_0)}{p_0(1-p_1)}}$$

CARD SORTING BY SEQUENTIAL SAMPLING PROCEDURE  
 $p_0 = 0.324, p_1 = 0.564, \alpha = 0.1, \beta = 0.1$   
 BROKEN LINE SHOWS SAMPLING SEQUENCE FOR CARD NO. 25

TA-760582-23R

СУПЕРСОУДНОСТІНС ДІФЕРЕНЦІАЛІУГ ІНДУКТОМЕТЕР  
8-0482-А2





SA-3183-13R

FIGURE 26 GRADIOMETER DATA

## NEUROPSYCHOLOGICAL PROFILE

(Department of Neurology,  
Stanford Hospital)

- HALSTEAD CATEGORY TEST
  - TACTILE PERFORMANCE TEST
  - SPEECH PERCEPTION TEST
  - SEASHORE RHYTHM TEST
  - TRAIL MAKING TEST
  - KNOX CUBE TEST
  - HALSTEAD-WEPMAN APHASIA SCREENING TEST
  - RAVEN PROGRESSIVE MATRICES
  - VERBAL CONCEPT ATTAINMENT TEST
  - BUSCHKE MEMORY TEST
  - FINGER-TAPPING TEST
  - DYNAMOMETER GRIP STRENGTH
  - GROOVE PEGBOARD TEST
-

## PSYCHOLOGICAL PROFILE

(Department of Psychiatry,  
Palo Alto Medical Clinic)

- W.A.I.S. (Wechsler Adult Intelligence Scale)
- BENDER GESTALT VISUAL MOTOR TEST
- BENTON VISUAL MEMORY TEST
- WECHSLER MEMORY SCALE
- LUSCHER COLOR TEST
- STRONG VOCATIONAL INTEREST BLANK
- M.M.P.I. (Minnesota Multiphasic Personality Inventory)
- E.P.P.S. (Edwards Personality Preference Schedule)
- RORSCHACH INKBLOT
- T.A.T. (Thematic Apperception Test)
- IN-DEPTH INTERVIEW



**MEDICAL PROFILE**

**(Department of Environmental Medicine,  
Palo Alto Medical Clinic)**

**1. GENERAL PHYSICAL EXAMINATION**

Complete Medical  
Family History

**2. LABORATORY EXAMINATIONS**

SMA-12 Panel Blood Chemistries  
Protein Electrophoresis  
Blood Lipid Profile  
Urinalyses  
Serology  
Blood Type and Factor  
Pulmonary Function Screening  
Electrocardiogram 12-Lead

**3. NEUROLOGICAL EXAMINATION**

Comprehensive Electroencephalogram, Sleeping and Routine

**4. AUDIOMETRIC EXAMINATION**

Comprehensive  
Bekeky Bone Conduction  
Speech Discrimination  
Impedance Bridge Test

**5. OPHTHALMOLOGIST EXAMINATION**

Comprehensive  
Card Testing  
Peripheral Field Test  
Muscle Test  
Dilation Funduscope  
Indirect Ophthalmoscopic and Fundus Examination

**6. SPECIAL VISUAL EXAMINATIONS**

Visual Contrast Sensitivity (SRI)

**7. EMI BRAIN SCAN**

### FOUR-STATE ELECTRONIC RANDOM NUMBER GENERATOR

SUBJECT	MEAN SCORE/100 TRIALS OVER 2500 TRIALS	BINOMIAL PROBABILITY
S1	25.76	0.22
S2	29.36	$3 \times 10^{-7}$
S3	24.67 (750 trials)	0.60
S4	25.76	0.22
S5	25.20	0.42
S6	25.40	0.33
S2 (REPLICATION)	27.88	$4.8 \times 10^{-4}$
ALL TRIALS	26.47 (15,750 trials)	$1.1 \times 10^{-5}$

SA-4540-1

## Summary: Remote Viewing

Subject	Number of Experiments	p-Value, Rank Order Judging
With natural targets		
S1 (experienced)	9	$2.9 \times 10^{-5}$
S2 and S3 (experienced)	8	$3.8 \times 10^{-4}$
S4 (learner)	9	$1.8 \times 10^{-6}$
S5 and S6 (learners)	8	0.08 (NS)
V1 and V2 (learners/visitors)	5	0.017
With technology targets		
S2, S3, S4, V2, V3	12	0.036

Distribution of Rankings Assigned to Transcripts Associated  
with Each Target Location for Visitor Subjects V1 and V2

Subject	Target Location	Distance (km)	Rank of Associated Transcript
V1	Bridge over stream, Menlo Park	0.3	1
V1	Baylands Nature Preserve, Palo Alto	6.4	2
V1	Merry-go-round, Palo Alto	3.4	1
V2	Windmill, Portola Valley	8.5	1
V2	Apartment swimming pool, Mountain View	9.1	3
	Total sum of ranks		8 (p=0.017)

Distribution of Rankings Assigned to Transcripts Associated with Each Target Location for Learner Subjects S5 and S6

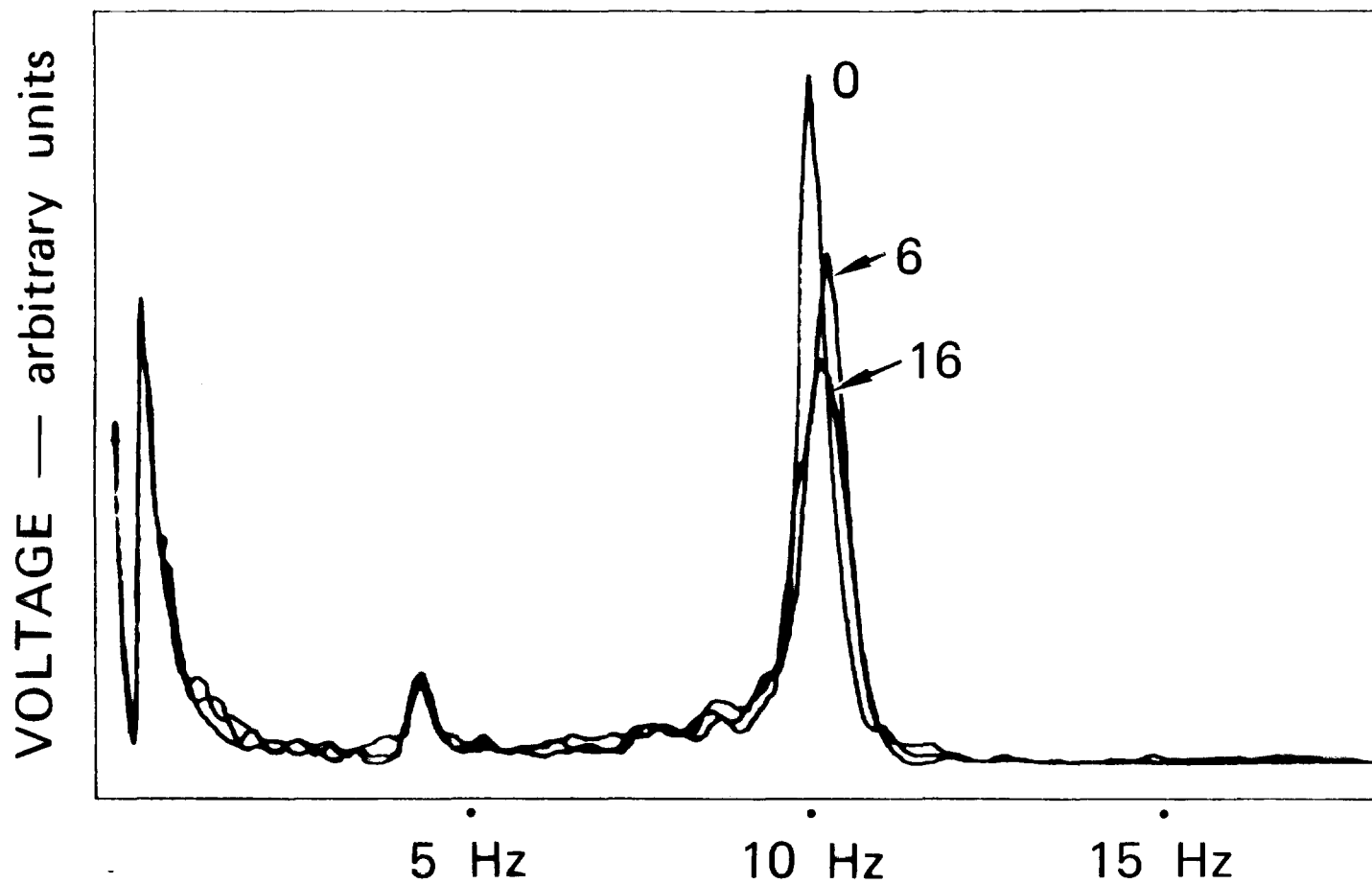
Subject	Target Location	Distance (km)	Rank of Associated Transcript
S5	Pedestrian overpass, Palo Alto	5.0	3
S5	Railroad trestle bridge, Palo Alto	1.3	6
S5	Windmill, Portola Valley	8.5	2
S5, S6	White Plaza, Stanford (2)	3.8	1
S6	Airport, Palo Alto	5.5	2
S6	Kiosk in Park, Menlo Park	0.3	5
S6	Boathouse, Stanford	4.0	1
Total sum of ranks			20 (p=0.08, NS)

Distribution of Rankings Assigned to Transcripts Associated with Each Target Location for Learner Subject Hammid (S4)

Target Location	Distance (km)	Rank of Associated Transcript
Methodist Church, Palo Alto	1.9	1
Ness Auditorium, Menlo Park	0.2	1
Merry-go-round, Palo Alto	3.4	1
Parking garage, Mountain View	8.1	2
SRI International Courtyard, Menlo Park	0.2	1
Bicycle shed, Menlo Park	0.1	2
Railroad trestle bridge, Palo Alto	1.3	2
Pumpkin patch, Menlo Park	1.3	1
Pedestrian overpass, Palo Alto	5.0	2
Total sum of ranks		13 ( $p=1.8 \times 10^{-6}$ )

Distribution of Rankings Assigned to Transcripts Associated  
with Each Target Location for Experienced Subjects  
Elgin (S2) and Swann (S3)

Subject	Target Location	Distance (km)	Rank of Associated Transcript
S2	BART Station (Transit System), Fremont	16.1	1
S2	Shielded room, SRI, Menlo Park	0.1	2
S2	Tennis court, Palo Alto	3.4	2
S2	Golf course bridge, Stanford	3.4	2
S3	City Hall, Palo Alto	2.0	1
S3	Miniature golf course, Menlo Park	3.0	1
S3	Kiosk in park, Menlo Park	0.3	3
S3	Baylands Nature Preserve, Palo Alto	6.4	3
	Total sum of ranks		15 ( $p=3.8 \times 10^{-4}$ )



TA-760525-4

FIGURE 2 OCCIPITAL EEG FREQUENCY SPECTRA, 0 TO 20 Hz, OF ONE SUBJECT (H.H.) ACTING AS RECEIVER SHOWING AMPLITUDE CHANGES IN THE 9-11-Hz BAND AS A FUNCTION OF STROBE FREQUENCY

Three Cases — 0-, 6- and 16-Hz flashes (12 trial averages)