

~~SECRET / STD~~

*Draft*

WORKING PAPER

22 FEB 90

DT-S

SUBJECT: SUN STREAK Project 9002-C (U)

HQDA, ATTN: DAMI-IO

1. (S/STD) During the period of 6 February 1990 to 21 February 1990, five sessions were to describe the residence of a target personality identified as [redacted] at geographical coordinates [redacted]

SG1A

SG1A

2. (S/STD) The target area is comprised mainly of a group of structures located on a hillside in a sunny surrounding of lush vegetation. Similar rolling hills are in the immediate area. Viewer 003's perception of the principal structure along with what appeared to be a water tower are outlined in an overhead sketch (TAB A). Viewer 018 perceived the principal structure represented in a sketch at TAB B. Viewer 025 perceived an isolated shed where drugs were stored (TAB C). There was a feeling of isolation and abandonment surrounding the target area. Cocaine as well as other drugs were stored at the shed. Viewer 025 also stated, "Initially, the drugs are transported by land, and then by air." Three viewers perceived the presence of water at the foot of the hill where the principal structures are located.

3. (S/STD) (OPS COMMENT) The contents of paragraph 2, represents a composite of information reported substantially by four sources.

SG1J

ENCL  
TAB A & TAB B

[redacted]

Branch Chief

*Class by: DAMI-E6  
Declues: OADR*

~~SECRET / STD~~

This document is made available through the declassification efforts  
and research of John Greenewald, Jr., creator of:

# The Black Vault



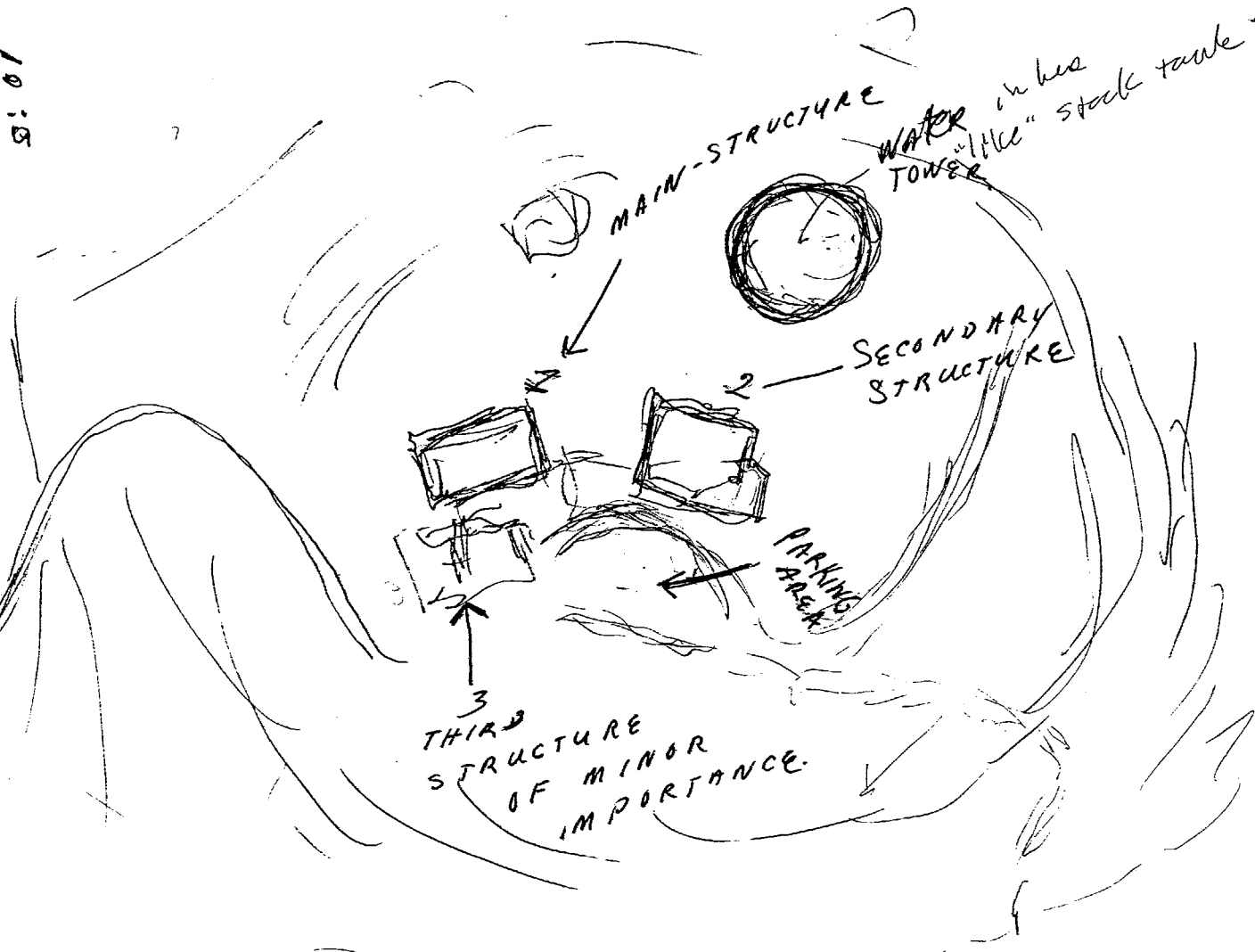
The Black Vault is the largest online Freedom of Information Act (FOIA)  
document clearinghouse in the world. The research efforts here are  
responsible for the declassification of hundreds of thousands of pages  
released by the U.S. Government & Military.

**Discover the Truth** at: <http://www.theblackvault.com>

TAB

P: 9002-C  
D: 900221  
V: 003  
S: 01

NEW METAL STRUCTURE



WATER TOWER in his "little" stock tank open w/d bet. ferois  
 & water trees rolling  
 & water enclosure

AS  
 "it" from a vantage

TARGET AREA  
 LOCATED ATOP

TAB

P: 9002-C  
900222  
V: 018  
S: 01

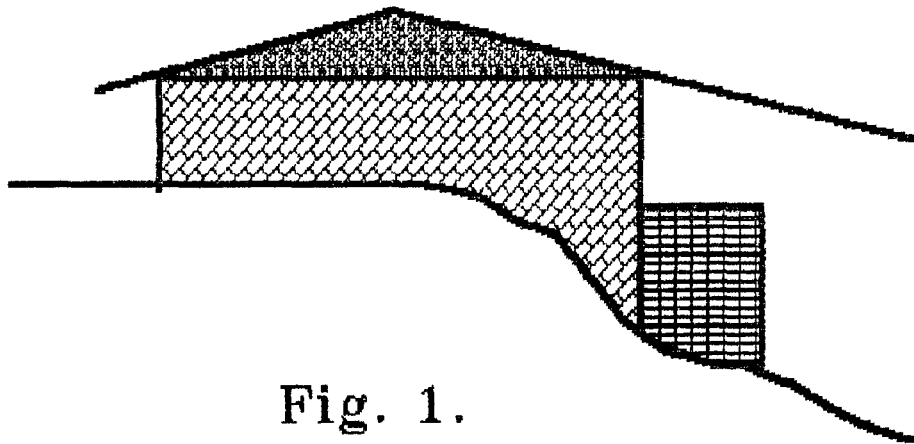


Fig. 1.

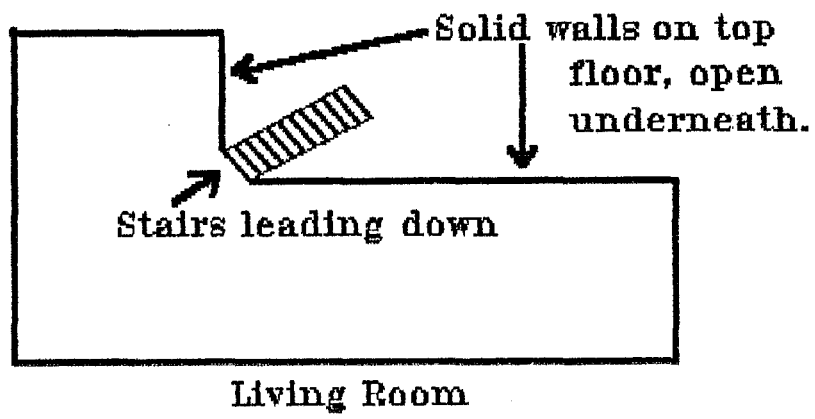


Fig. 2.