

14

SECRET/NOFORN-SKEET CHANNELS ONLY

PROJECT SUN STREAK (U)

WARNING NOTICE: INTELLIGENCE SOURCES AND METHODS INVOLVED

CRV Session Procedures Report (S/NF/SK)

099
0827
1010

```

|-----|
|Control Number   : 'M'   |
|-----|
|Date of Session  : 01May87|
|-----|
|Date of Report   : 04May97|
|-----|
|Source Identifier: 011   |
|-----|

```

1. (S/NF/SK) Tasking: Original tasking data sheet attached. Monitor drew upon prior CRV sessions and ops officer amplifying instructions for cuing material.

2. (S/NF/SK) Session: [NOTE: This source is still undergoing Stage V training]. Source acquired target immediately; excellent Stage III, excellent session, particularly in view of the fact that this was source's first attempt at this target.

3. (S/NF/SK) Summary: Target is a large, long, boxy, angular vehicle, but this is not the main concern (intelligence question); rather it is something that is associated with the vehicle. Vehicle is perceived to be located in a forested area with tall pine trees. The area around the vehicle is separately secured. There is something that is associated with this vehicle--a part of it which is mounted or carried, that is not always visible. This seems to be connected with the idea of a "system".

4. (S/NF/SK) Feedback: Source was informed that the target was indeed a vehicle and that he would revisit it again.



SG1J

SECRET/NOFORN-SKEET CHANNELS ONLY

This document is made available through the declassification efforts
and research of John Greenewald, Jr., creator of:

The Black Vault



The Black Vault is the largest online Freedom of Information Act (FOIA) document clearinghouse in the world. The research efforts here are responsible for the declassification of hundreds of thousands of pages released by the U.S. Government & Military.

Discover the Truth at: <http://www.theblackvault.com>

Project "M"

Interviewer / Monitor Tasking

Describe the vehicle(s)

182478
836131

Note: In the envelope are photos, sketches and descriptions.

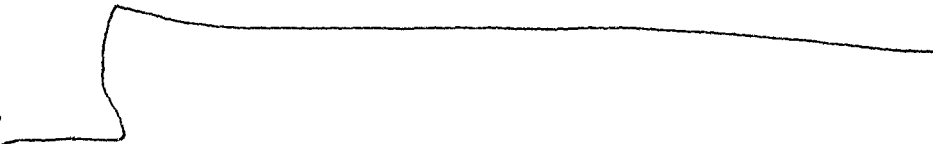
Ops Note: Expand on viewer's descriptions as much as possible. Explain the vehicle(s).

(M)

P.I.'s - *Polter*
A.V.'s - *none*

1 MAY 87
0827hrs

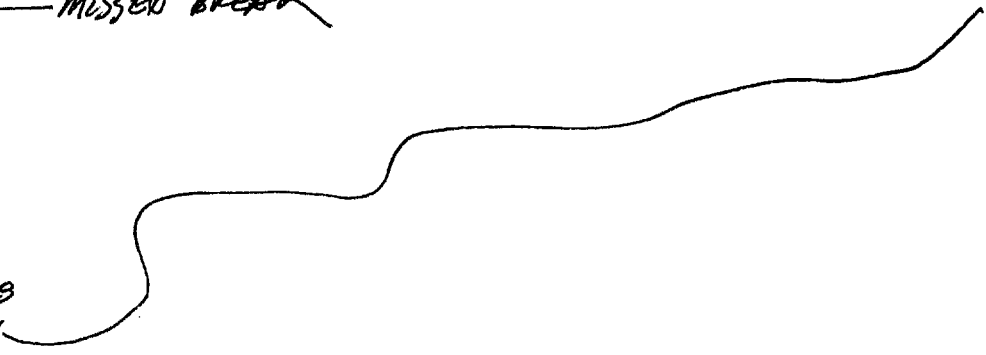
182478
836131



*L across, angle up
angle across, flat across
note
B. Structure*

1821 — MISSED BREAK

182479
836131



↑ . across, up, up,
 curved over, curve
 curving up over
 over,
 of +
 B. 1. 1. 1.

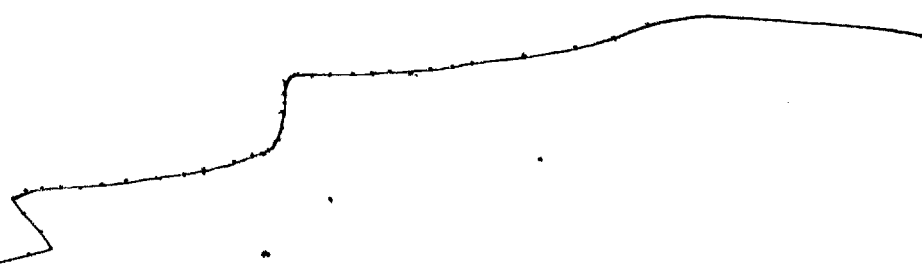
182470
826131



52

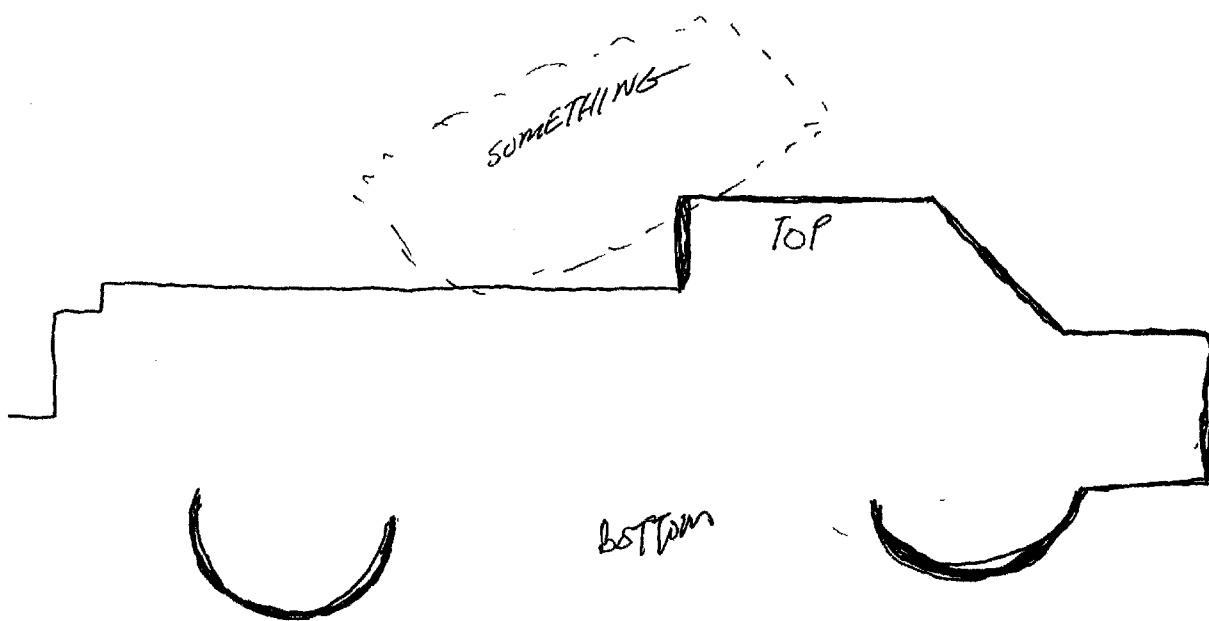
across, angle up
angle across,
head
B strokes

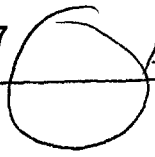
182478
836131



5.2
hard
smooth
cool
cold
green
angles
curves
dark
curving
round
angles
round
curves
inclines

to across, angles,
angle across angles
angle across
hard
b. structure





hard
green
dark
cool
cold

angles
inclines
round
curving
curving

Brick

this is not a
building - it's
not stone, brick

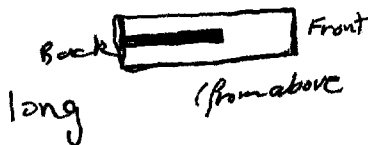
VEHICLE ?

4/2 feel that the vehicle is not the main concern.
The target is something that is associated with the
vehicle.

long
boxy
angular
large

part green

rectangular



SURFACE
SOLID
DIRT
LAND

4/2 the surrounding area is forested with tall pine
trees

angles
rectangles
squares
corners
round

round

metallic
object

guidance

dish
boxes

control
signed

CONTROL
OBJECTS
EMANATIONS

box
dish
boxes

CONTROL
ATTRIBUTES
EMANATIONS

CONTROL
SUBJECTS

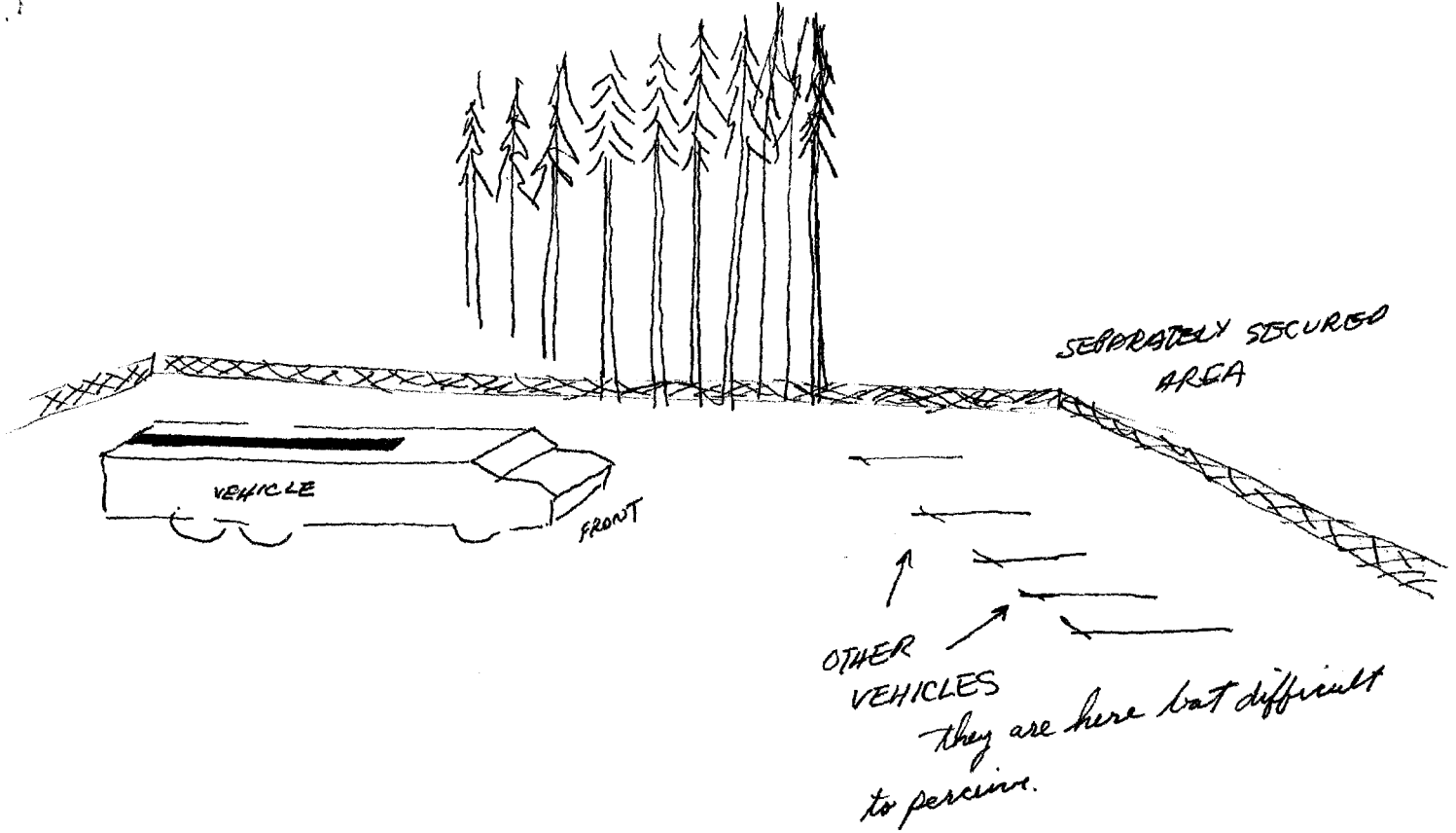
EMANATIONS

ELECTRONICS
CONTROL
FREQUENCY
MISSILE

CONTROL
TOPICS

EMANATIONS

GUIDANCE
MILITARY
AIR DEFENSE



4 1/2 - there is something that is associated with this vehicle, a part of this vehicle, but it is not always visible.

black

squares
rectangles

circular
round

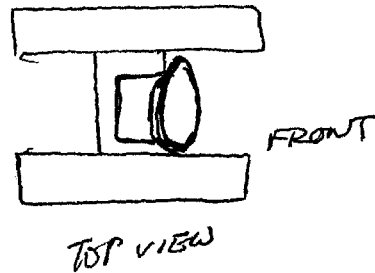
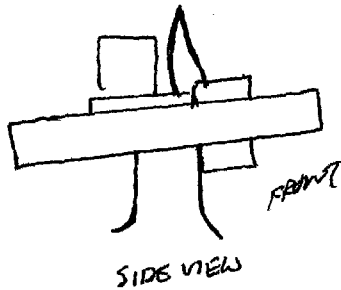
SOMETHING

boxes
wires

electronic

dish

antenna



MOVABLE
rotating
up and down

system

there are other aspects to this system, but the particular object or "something" which is associated with, or a part of the vehicle is not always visible or apparent. - as if it can extend or retract into the body of the vehicle. This vehicle and its object are just a part of a whole system

END 0946hrs

POST SESSION

1 MAY 87

1010 hrs

AOL

The device/object of interest is mounted or carried on a large heavy vehicle. It is mobile. The object is part of a system. There are other vehicles associated with this system. This object is carried by, or is a part of the vehicle, but it is not always visible. This object/device can move up and down almost 90° and can rotate 360°. It is as if its function was to track something. This device can move up and down and rotate amazingly fast.