

~~SECRET~~

DATA SUMMARIES

(S/NF/SG/LIMDIS) Following are the perceived highlights from each source.

- (S/NF/SG/LIMDIS) Source A:

SG1A -- The term [] is associated with a small boat, a brown eyed man, and possibly green plants. The small boat is located ocean side and may be scheduled to meet with a small to medium white vessel with masts for a drug related activity. A transfer of contraband will occur in the near term.

- (S/NF/SG/LIMDIS) Source B:

SG1A -- The term [] refers to a location. The activity associated with [] has been given a window by the planners of 7 to 10 days to take place. This will occur between April 25 and May 6. However, an extreme natural process or phenomenon will interfere with the development and evolution of "cigarette".

-- Whatever is being dealt with, it will be brought into this location by air and will be taken away by air.

SG1A -- [] is a location within an area of extensive sand dunes (Attachment A). These dunes, however, do not occur with what is normally considered a desert environment; they are an anomaly for the area. This location used to be commercially exploited but is no longer viable. This commercial activity was associated with the concept of a "sand mining" or "sand processing" activity.

SG1A -- Specifically, [] is located on the back side of the sand dunes. It is hidden from a large, developed area (i.e. city) which can be seen in the distance.

REPRODUCTION REQUIRES
APPROVAL OF ORIGINATOR
OR HIGHER DOD AUTHORITY

FURTHER DISSEMINATION
ONLY AS DIRECTED BY DIA/PAG
OR HIGHER DOD AUTHORITY

CLASSIFIED BY MULTIPLE SOURCES
DECLASSIFY ON OADR

1

~~SECRET~~
NOT RELEASABLE TO FOREIGN NATIONALS
STAR GATE
LIMDIS

Enclosure 1

This document is made available through the declassification efforts
and research of John Greenewald, Jr., creator of:

The Black Vault



The Black Vault is the largest online Freedom of Information Act (FOIA) document clearinghouse in the world. The research efforts here are responsible for the declassification of hundreds of thousands of pages released by the U.S. Government & Military.

Discover the Truth at: <http://www.theblackvault.com>

~~SECRET~~

-- This location contains a hard, narrow "L"-shaped feature reminiscent of a small landing strip (Attachment B). This landing strip appears to disappear right into the dunes. However, the foot portion of the "L" runs in front of a large, open structure. This structure feels like an abandoned warehouse or storage facility. It is constructed of blocks reminiscent of cement or poured concrete (Attachment C). There is a second structure present. It is tall, squarish and constructed of wood (Attachment D). The exterior is faded and is appears very weathered.

-- The faint outline of a road or trail may be perceived leading away from the larger structure (Attachments B&C). It may have once been well used access, but is now covered over by sand. It is very hard to perceive.

-- There are several sets of large power lines and a large suspension bridge associated with the developed area in the distance. There is a mountain range which separates this "city" from a body of water reminiscent of an ocean. The mountains in this particular vicinity are famous for a lot of fog.

-- The terms "FLAT TOP" and "POT LID" were perceived as associated with this target.

-- A cement reinforced trough-shape hole has been tunneled into the dunes (Attachment E).

- (S/NF/SG/LIMDIS) Source C:

-- Activity consists of a man on a small vessel. This vessel is in shallow waters near land. It seems as though the man waits for a larger vessel to come in. I could see the man taking something off the smaller vessel and putting it on land. Overall, the activity is drug related and occurs at night.

-- Coordinates 16 degrees north and 78 degrees west surfaced.

-- As far the significance of [redacted] as stated in the tasking, it probably relates to a type of boat in this scenario as opposed to someone smoking. However, [redacted] could also relate to marijuana or it could be a codeword. As to whether or not [redacted] is time-sensitive, one can easily assume that it is.

SG1A

SG1A

SG1A

2

~~SECRET~~

~~NOT RELEASABLE TO FOREIGN NATIONALS
STAR GATE
LIMDIS~~

~~SECRET~~

rolling
sand dunes
ferris; like

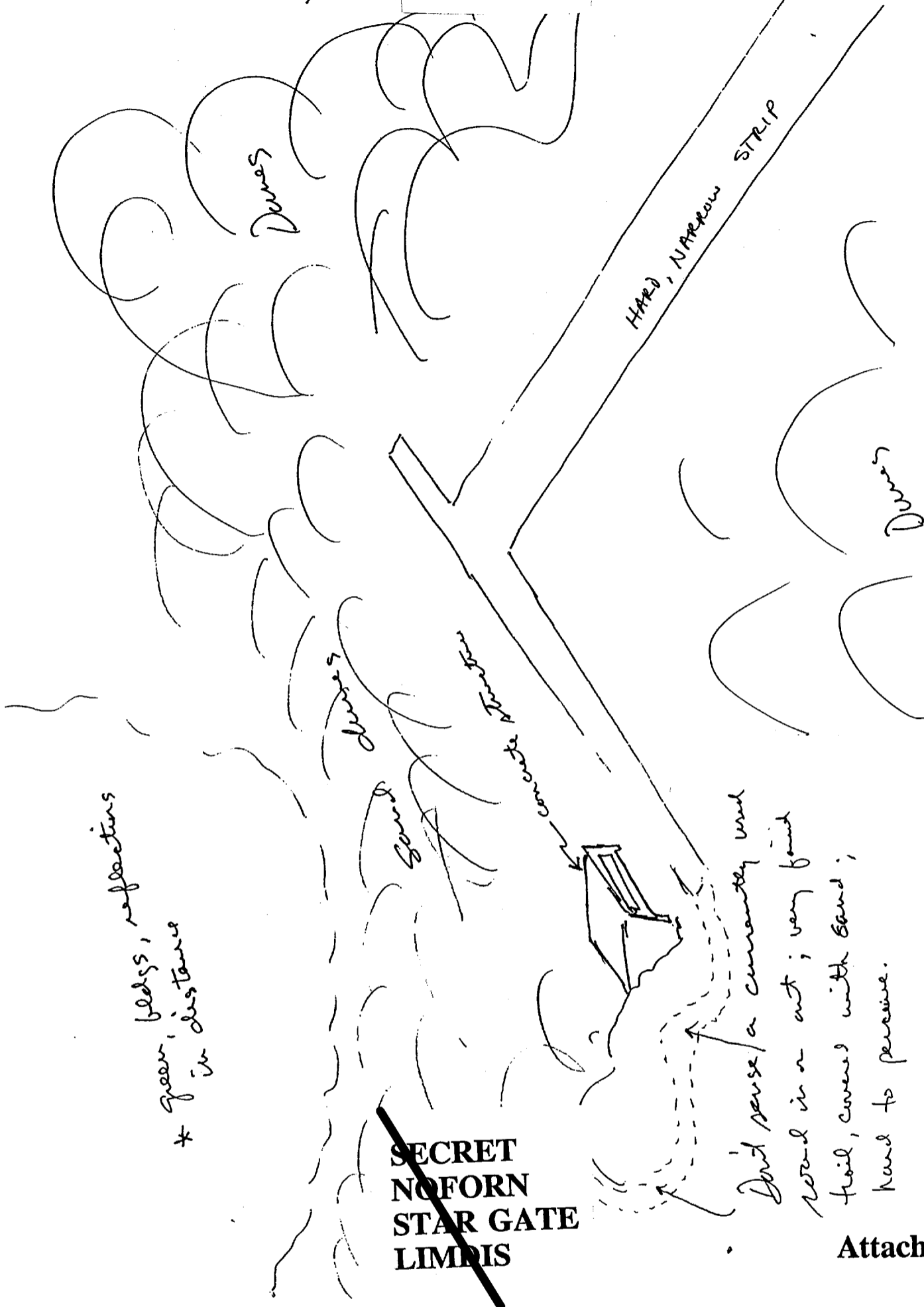


View from a distance

~~SECRET
NOFORN
STAR GATE
LIMDIS~~

Attachment A

~~SECRET~~



* green beds, reflectors in distance

~~SECRET
NOFORN
STAR GATE
LIMDIS~~

Dirt parse a curiously used road in a cut; very faint trail, covered with sand; hard to perceive.

Attachment B

~~SECRET~~

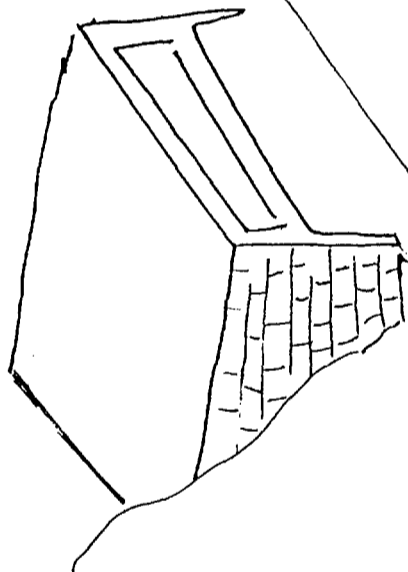
Dunes

BURIED STRUCTURE

HARD, NARROW STRIP.

Dunes

Dunes

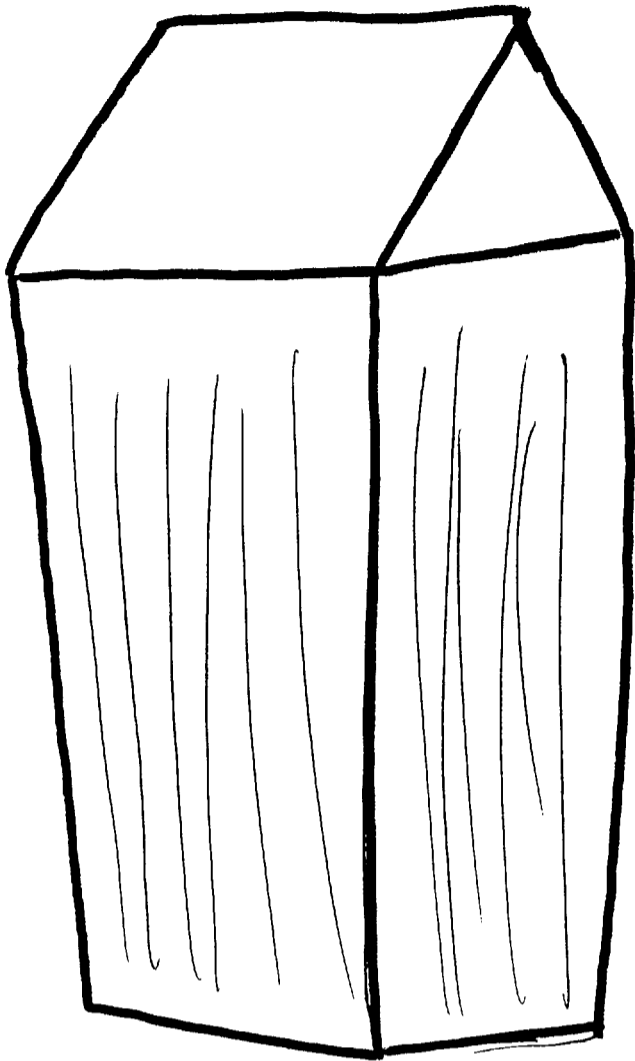


Old wood or frame; very faint.

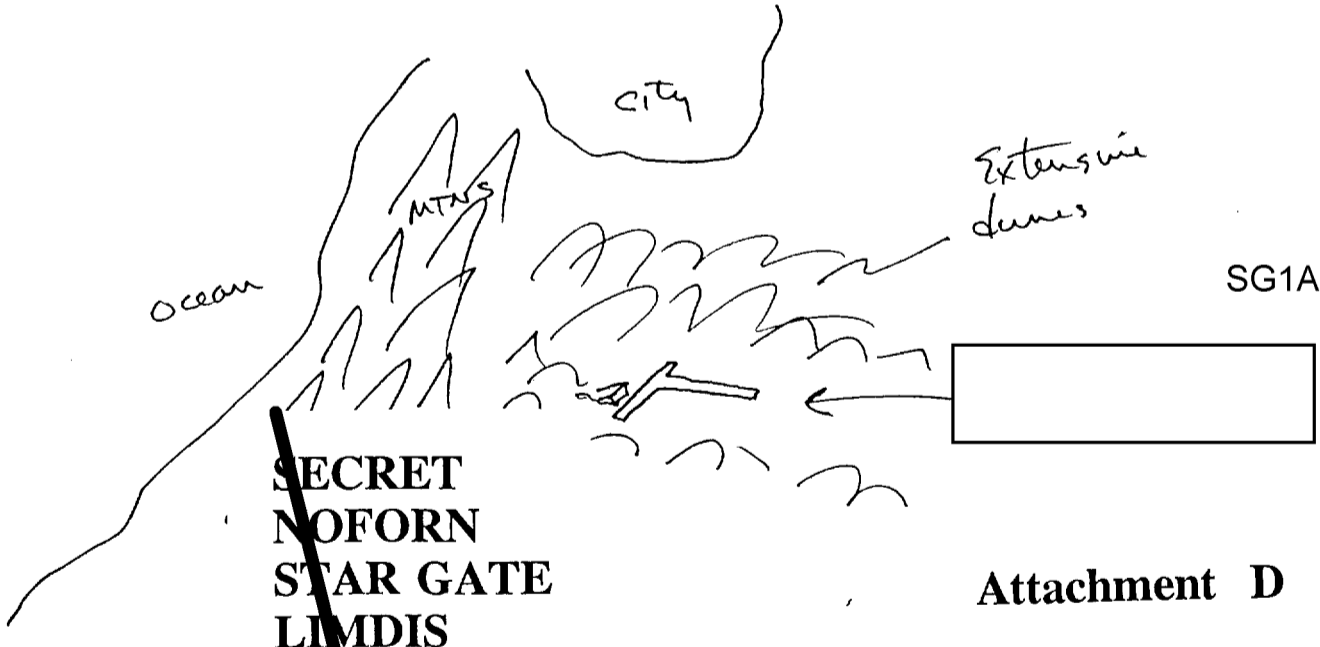
~~SECRET
NOFORN
STAR GATE
LIMDIS~~

Attachment C

~~SECRET~~



Tall, wooden structure;
wood exterior; looks
old, faded, aged.
Associated with concept
of "sand mining" or
"sand processing"
activity.

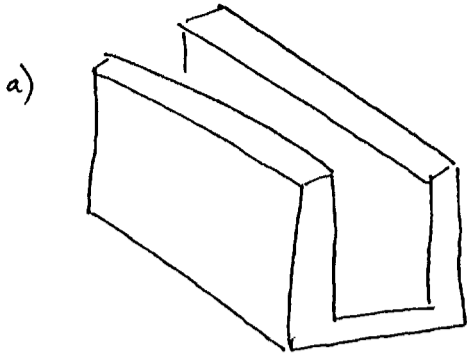


**SECRET
NOFORN
STAR GATE
LMDIS**

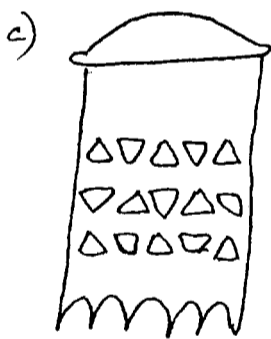
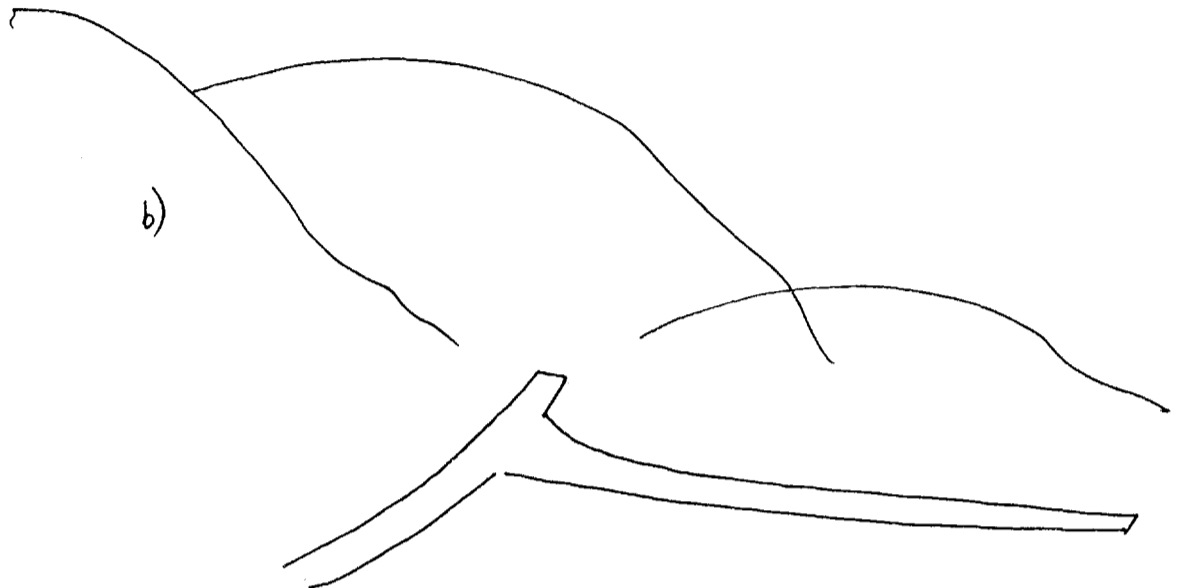
SG1A

Attachment D

~~SECRET~~



- hard, squared off, rough like feature
- deep; feels partially ~~buried~~ buried



- unknown object

~~SECRET
NOFORN
STAR GATE
LIMDIS~~

Attachment E

~~SECRET~~

PROJECT EVALUATION FEEDBACK

SG1J

PROJECT NO. _____
DATE OF PROJECT _____

The following is an evaluation form for the project you reviewed. Please complete this form and return to [] Chief, Technology Assessment and Support Activity.

A. Is the information accurate? (Circle response)

<u>Categories</u>	Source <u>A</u>	Source <u>B</u>	Source <u>C</u>
Yes (true)	(1)	(1)	(1)
May be true	(2)	(2)	(2)
Possibly true	(3)	(3)	(3)
No	(4)	(4)	(4)
Possibly not true	(5)	(5)	(5)
Unsure	(6)	(6)	(6)

B. What is value of the Source(s)' information? (Circle response)

Major significance	(1)	(1)	(1)
High value	(2)	(2)	(2)
Of value	(3)	(3)	(3)
Low value	(4)	(4)	(4)
No value	(5)	(5)	(5)

UNCLASSIFIED WHEN BLANK

~~SECRET~~
NOT RELEASABLE TO FOREIGN NATIONALS
LIMITED DISSEMINATION
STAR GATE

Enclosure 2

