

P.I.s -
A.V.s - none



18 FEB 88

1533 HRS

(HIGGINS/PRESENT LOCATION)

SG1J

8809



t. across, angle up
angle across, across
curving head

Structure


This document is made available through the declassification efforts
and research of John Greenewald, Jr., creator of:

The Black Vault




The Black Vault is the largest online Freedom of Information Act (FOIA)
document clearinghouse in the world. The research efforts here are
responsible for the declassification of hundreds of thousands of pages
released by the U.S. Government & Military.

Discover the Truth at: <http://www.theblackvault.com>


8808 

A. curving up, curving
 used for

8809 

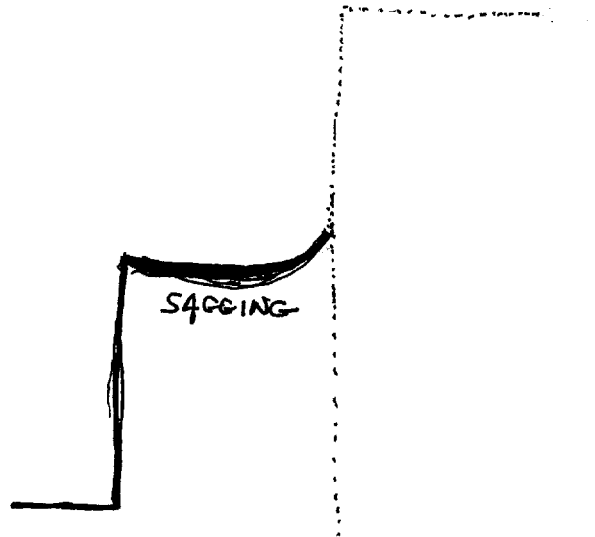
to . across, angle up, angle across
 hard
 B. structure

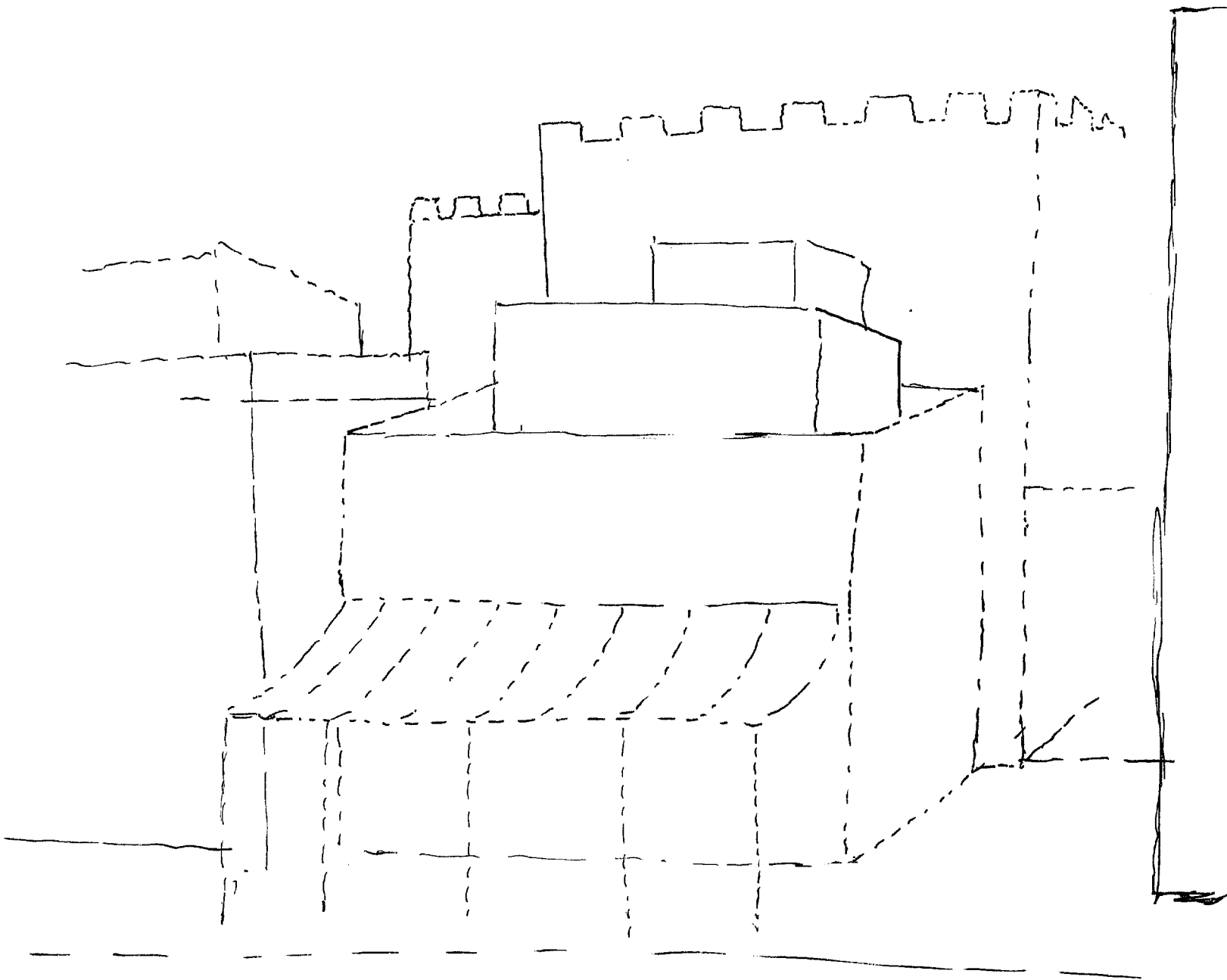
A. incline up, angle up.
 angle across
 hard
 B. structure

8809 

A across, angle up /
angle across
hard
R structure

S-2
brown
tan
rough
dusty
dirty
gentle
angles
rectangles
arriving up

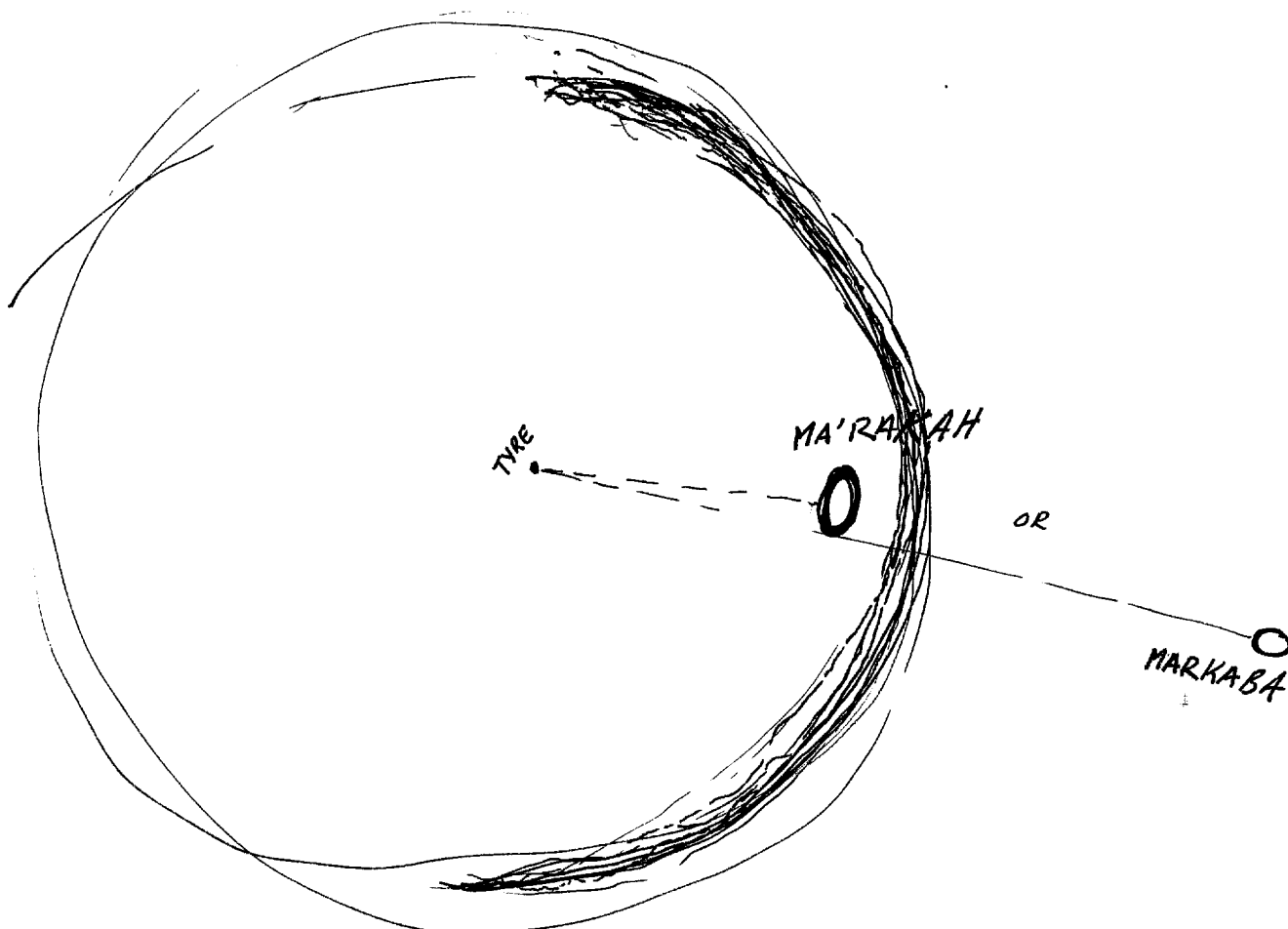




BAZARR
FORTRESS
CRUSADES CASTLE
MUD BRICK

(Beaufort Castle?)

4 1/2 - a very old section of a town.... buildings are all connected and stacked together, side-by-side and on top of each other... old decaying crumbling brickwork. A large fortress like structure in the background. Hardly any windows in the structures. Feeling of being crowded. Like a bazaar



4 1/2 - feel that he is not very far from Tyre at this time. I feel very strongly that his present location is MA'RAKAH!

1630HRS