

SECRET/STIPPLED/NOFORN

PROJECT SUN STREAK

WARNING NOTICE: INTELLIGENCE SOURCES AND METHODS INVOLVED

PROJECT NUMBER: 9029 SESSION NUMBER: 01
DATE OF SESSION: 900521 DATE OF REPORT: 900522
START: 1510 END: 1530
METHODOLOGY: SOLO VIEWER IDENTIFIER: 003

1. (S/NF/STD) MISSION: Target is the vessel identified as

SG1A

2. (S/NF/STD) VIEWER TASKING: Encrypted coordinates, a map, notional ship grids and the information/requirements stated in the mission statement above.

3. (S/NF/STD) COMMENTS: NO PI'S reported. 003's description of the vessel does not correlate with known ops data. However, his current location and final destination correlate with 049's session.

4. (S/NF/STD) EVALUATION:

5. (S/NF/STD) SEARCH EVALUATION:

PM: 095

HANDLE VIA SKEET CHANNELS ONLY

SECRET/STIPPLED/NOFORN

Referral Review by NIMA/DoD

CLASSIFIED BY: DIA (DT)
DECLASSIFY: OADR

This document is made available through the declassification efforts
and research of John Greenewald, Jr., creator of:

The Black Vault



The Black Vault is the largest online Freedom of Information Act (FOIA)
document clearinghouse in the world. The research efforts here are
responsible for the declassification of hundreds of thousands of pages
released by the U.S. Government & Military.

Discover the Truth at: <http://www.theblackvault.com>

S E C R E T STIPPLED NOFORN
SPECIAL ACCESS REQUIRED
REPORT OF REQUESTED INFORMATION

Requestor Task # JT4-0020-90

Source # 003

DCSINT Task # 9029

Rcvd. by Source 21 May 90

Returned to PO 1 / 190

SESSION DATE/TIME: 2/15/10 L M A Y 90

ESSENTIAL ELEMENTS OF INFORMATION REQUESTED IN ORDER OF PRIORITY:

SG1A

1. Determine the current location of the vessel identified as

[Redacted]

RESPONSE: ^{Circa} 2150 N / 6730 W — ^{about 200 mi. west of} Turks/Caicos Islands

2. Identify and describe where the contraband in the form of illegal drugs is stored aboard ship.

RESPONSE: Slightly to port + slightly forward of midships below the deck line but above the waterline. Material ID'd as white, stinging, salt-like substance.

3. Determine where and when the contraband will be off-loaded/transferred.

RESPONSE: Will not be. Vessel will carry on into port.

4. Identify the US port(s)-of-call for the contraband.

Savannah, GA area ; Alternatively, St. Petersburg/Tampa area

Route?

PROJECT OFFICER'S COMMENTS:

S E C R E T STIPPLED NOFORN
SPECIAL ACCESS REQUIRED
Handle Via SKEET Channels Only

SECRET/STIPPLED/NOFORN

Working paper

Proj. no: 9029
Date: 21 May 90
Viewer: 003
Session: 001
Monitor: N/A
Time: 1510-1530

Summary of Information

Vessel seems to be larger than the average pleasure/fishing craft, steel construction, white superstructure that seems to extend a large percentage of the length of the ship. There is a small amount of red trim, and the hull is a dark color, perhaps dark blue. Ships railing are varnished wood, and there are white, covered lifeboats. Impression of small cruise vessel, but more utilitarian in purpose--perhaps container ship. Vessel is presently vic 2150N/6730W--about 200 miles ^{East} ~~west~~ of Turks/Caicos Islands.

Contraband is white, has a stinging smell to it, and a texture like salt. There is a sense that the material occupies a relatively small portion of the vessel's bulk. Material is located slightly to port and slightly forward of midships, below the deck line but above the waterline. It seems the vessel intends to carry contraband cargo through to final destination. Two places identified. Strongest indication was Savannah, Georgia area, but a secondary indication in the Tampa/St. Petersburg area.

Handle Via SKEET Channels Only

SECRET/STIPPLED/NOFORN

A

B

C

D

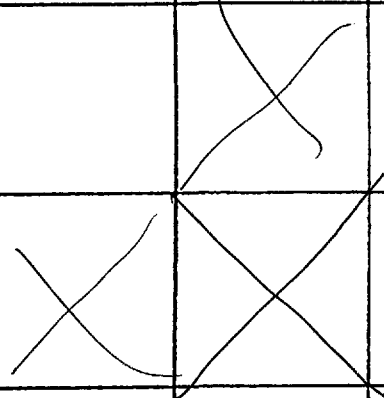
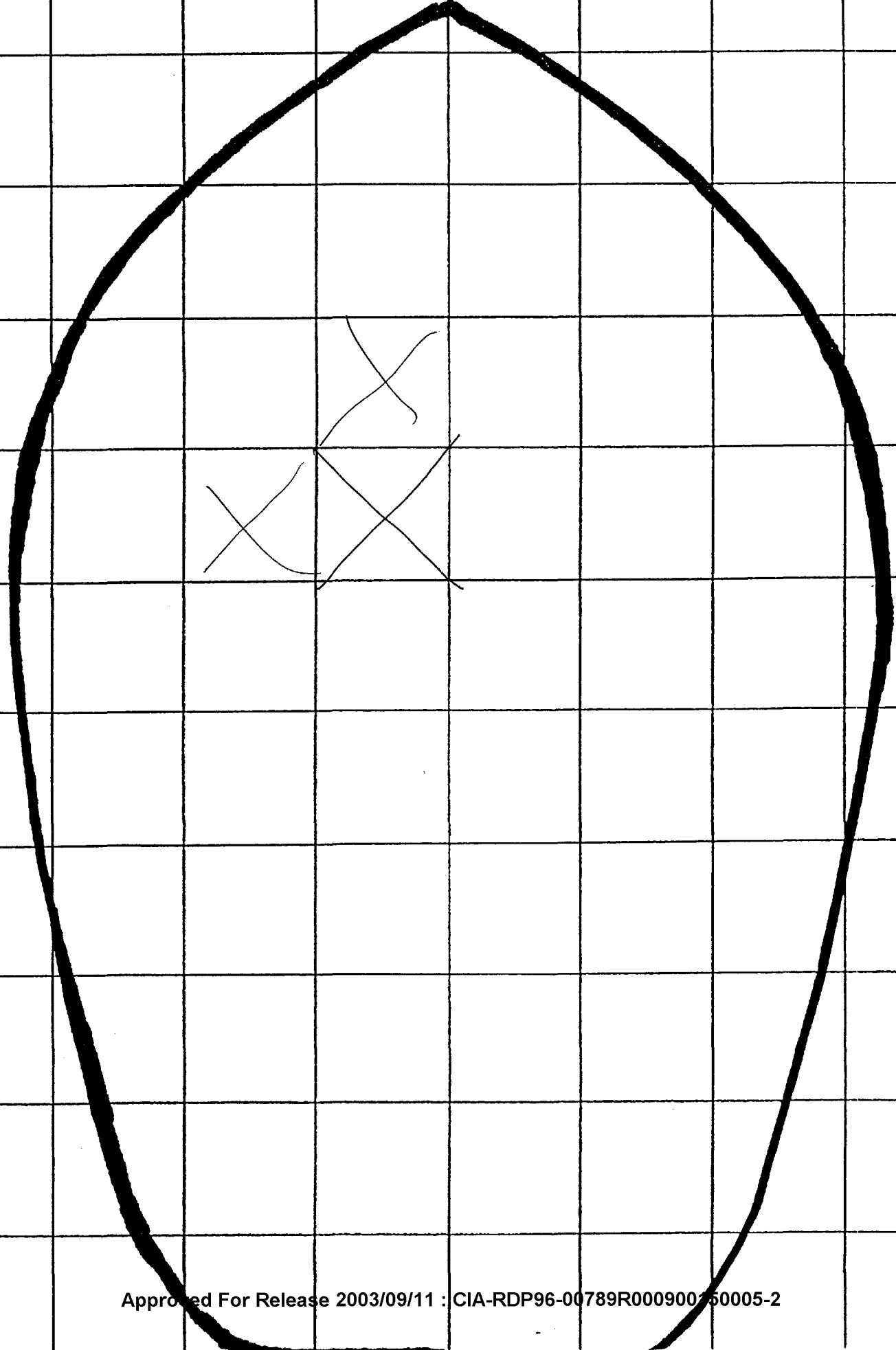
E

F

G

H

Approved For Release 2003/09/11 : CIA-RDP96-00789R000900150005-2



Approved For Release 2003/09/11 : CIA-RDP96-00789R000900150005-2

1

2

3

4

5

6

7

8

9

10

A

B

C

D

E

F

G

H

WREATH

Revin E

TOP of SUPER STRUCTURE(S) if any

stem

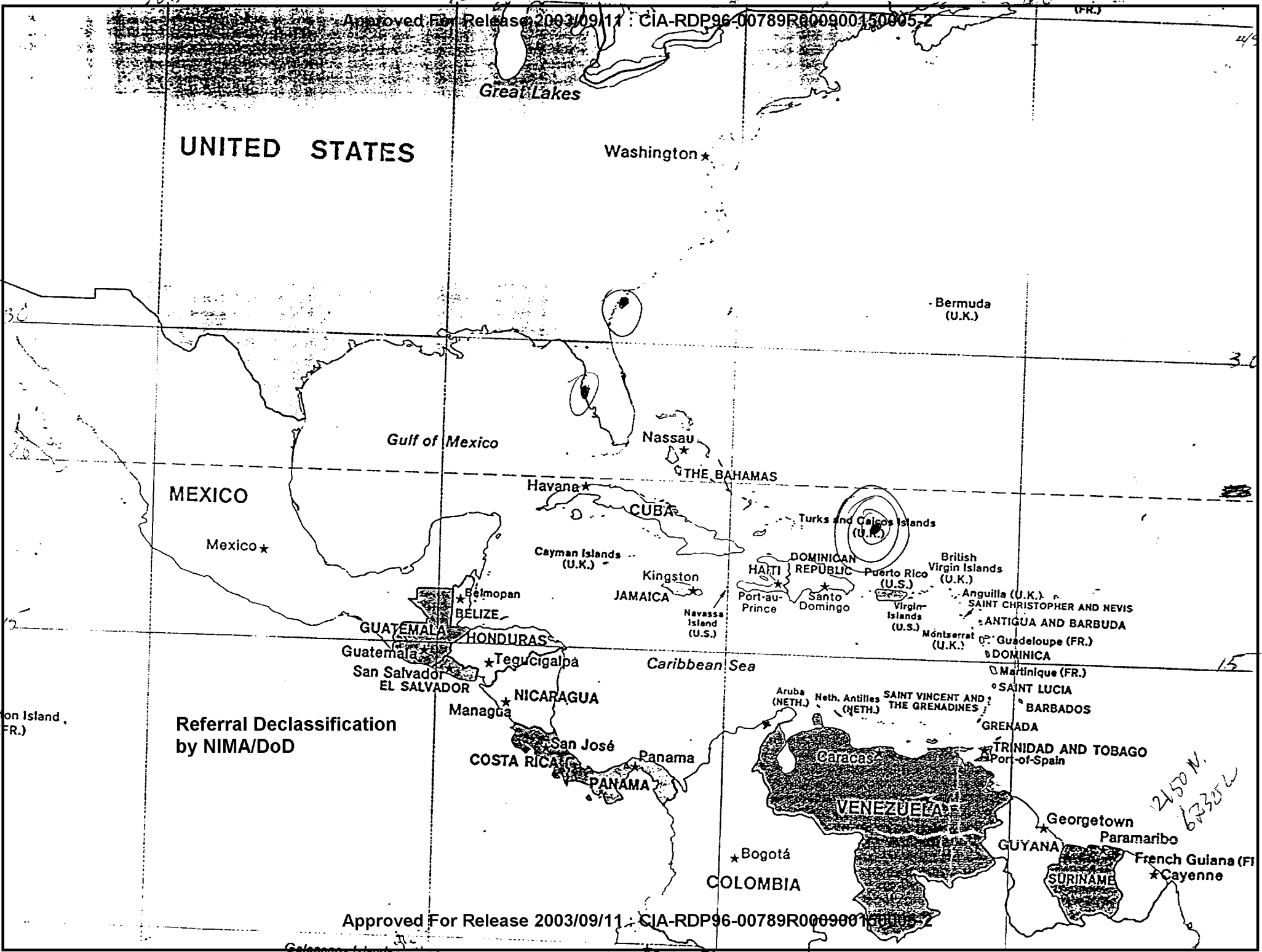
105

90

75

60

Approved For Release 2003/09/11 : CIA-RDP96-00789R000900150005-2



UNITED STATES

Washington *

Gulf of Mexico

MEXICO

Mexico *

Havana *

Nassau *

THE BAHAMAS

Kingston *

Cayman Islands (U.K.)

JAMAICA

Navassa Island (U.S.)

Belmopan *

BELIZE

GUATEMALA

HONDURAS

Guatemala *

San Salvador *

EL SALVADOR

NICARAGUA

Managua *

San José *

COSTA RICA

PANAMA

Panama

Caribbean Sea

COLOMBIA

Bogotá *

VENEZUELA

Caracas *

Aruba (NETH.)

Neth. Antilles (NETH.)

SAINT VINCENT AND THE GRENADINES

GRENADA

TRINIDAD AND TOBAGO

Port-of-Spain

GUYANA

Georgetown

Paramaribo

SURINAME

French Guiana (FR.)

* Cayenne

Bermuda (U.K.)

Turks and Caicos Islands (U.K.)

DOMINICAN REPUBLIC

HAITI

Port-au-Prince

Santo Domingo

Puerto Rico (U.S.)

British Virgin Islands (U.K.)

Virgin Islands (U.S.)

Anguilla (U.K.)

SAINT CHRISTOPHER AND NEVIS

ANTIGUA AND BARBUDA

Montserrat (U.K.)

Guadeloupe (FR.)

DOMINICA

Martinique (FR.)

SAINT LUCIA

BARBADOS

on Island (FR.)

Referral Declassification by NIMA/DoD

Approved For Release 2003/09/11 : CIA-RDP96-00789R000900150005-2

2150 W. 6330 E

Paint
21 mg 90
P. m. scale, 100
1510

985586

473822



A. across
flat
wood

B. low

A. across
waves
fluid

B. water

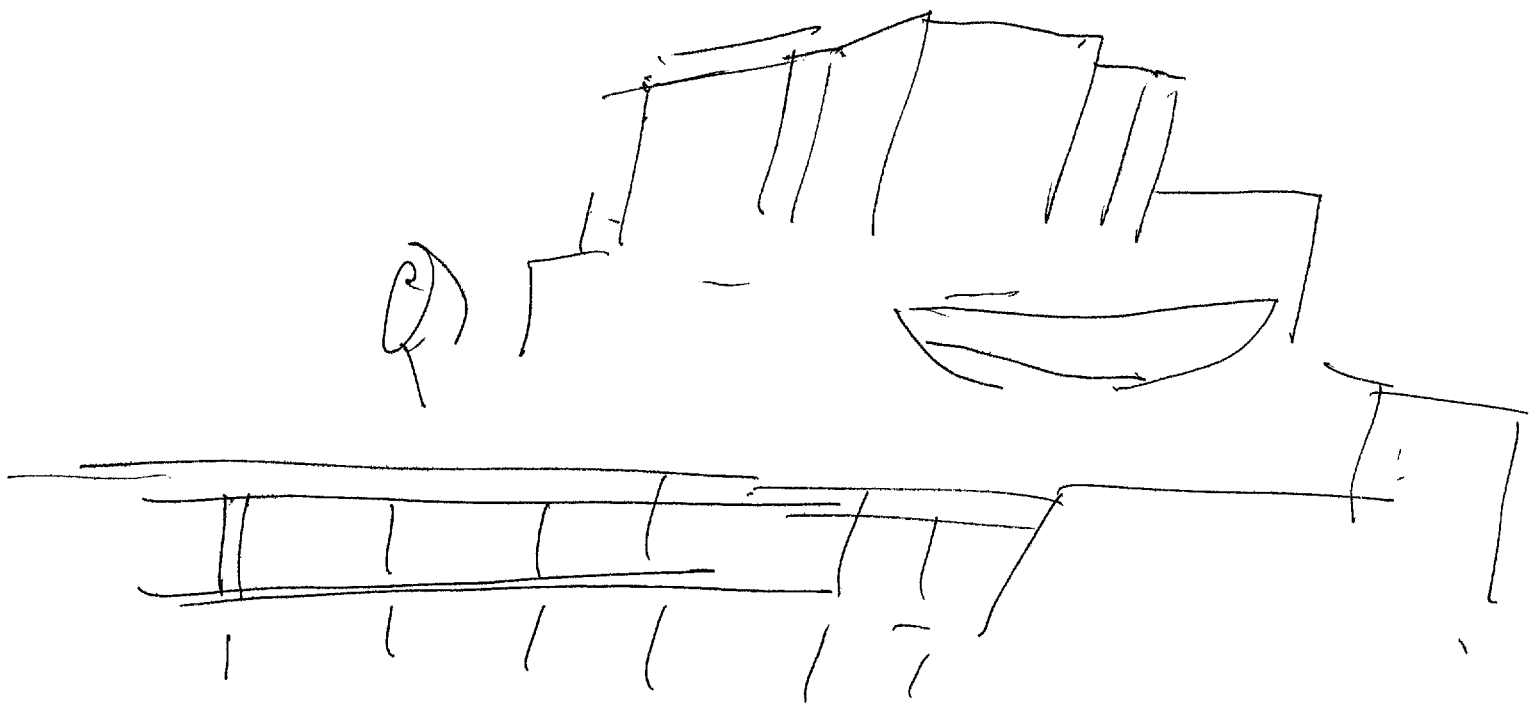
A. arch up
across arch
down
side

B. structure

S 2

blue
white
dk color
red
brown
bird sounds
fuzzy, small
stings, feel
cool
breezy
open
low
large
side

H-2 BK
imposed upon



52

D AZ BS T I JAL HG
large

white
dk. blue
red
shiny
brown

high

metal
wood
vail
vessel
ventilators

water

wide
deep
open

wheel
white caps
spray
windy

moving

near land

CAVU HTS

chase

sharp
swell

A1 B6

stirring,
implement

abrasive
corrosive

disorienting

ALS
salt-like
texture

A1 B6
about 1.2g
it.

Gives up
chill?

strings/bumps
have when
try to
smell.

Sub 2 Same that material occupies a relatively small portion
of the vessel's bulk - above water-line.
below superstratum, somewhat porous

5-2

D

#2

F7

I

I

AR

AL

5

5 1/2

Vessel is large, metallic - white superstructure w/ slight red trim. Dark hull - perhaps dark blue. Obs. Superstructure aft, but runs forward as well. ~~Some~~ "like" small cruise ship, but seems more utilitarian - maybe container. Larger than pleasure + most fishing craft.

Transfer seems not likely - "like" vessel will "ride it all the way in" - - -

bk
reave

SG1A

Approved For Release 2003/09/11 : CIA-RDP96-00789R000900150005-2

Approved For Release 2003/09/11 : CIA-RDP96-00789R000900150005-2