

Handwritten initials and date: 20 Oct 89

SECRET/NOFORN
PROJECT SUN STREAK

WARNING NOTICE: INTELLIGENCE SOURCES AND METHODS INVOLVED

PROJECT NUMBER: 6033	SESSION NUMBER: 001
DATE OF SESSION: 29 Sep 89	DATE OF REPORT: 2 Oct 89
START: 1400	END: 1445
METHODOLOGY: Sol	VIEWER IDENTIFIER: 011

1. (S/NF/SK) MISSION: Access and describe site and activity at location being visited by beacon. Locate site on a Ft. Meade map.
2. (S/NF/SK) VIEWER TASKING: Access beacon.
3. (S/NF/SK) COMMENTS: Viewer successfully accessed and reported elements of site. Map dowsing proved unsuccessful.
4. (S/NF/SK) EVALUATION: 2

Handwritten mark resembling a stylized '2' or a signature.

HANDLE VIA SKEET CHANNELS ONLY

SECRET/NOFORN

CLASSIFIED BY: DIA (DT)
DECLASSIFY: OADR

This document is made available through the declassification efforts
and research of John Greenewald, Jr., creator of:

The Black Vault



The Black Vault is the largest online Freedom of Information Act (FOIA)
document clearinghouse in the world. The research efforts here are
responsible for the declassification of hundreds of thousands of pages
released by the U.S. Government & Military.

Discover the Truth at: <http://www.theblackvault.com>

SECRET

WORKING PAPER

P BEACON

D 890929

VOII

SOI

MSOLD

T1400-1445

SUMMARY OF INFORMATION

PARAGRAPHS 1-4, ARE KEYED TO THE NUMBERED SKETCHES ON PAGE TWO OF THIS REPORT.

1. THE FIRST IMPRESSION WAS OF A BIG, ROUND, DARK EYE, I COULD SEE NOTHING ELSE, JUST AN EYEBALL.

2. AS I TURNED TO LOOK IN ANOTHER DIRECTION I WAS BLINDED BY A BRIGHT LIGHT, OR THE SUN. THIS TOOK ME BY COMPLETE SURPRISE AND I HAD TO TAKE A SHORT BREAK UNTIL I GOT MY "VISION" BACK.

3. UPON REACQUIRING THE TARGET I WAS DRAWN TO A LARGE FOUR-LEGGED ANIMAL THAT LOOKED LIKE AN ELK, OR A COW, LICKING IT'S CALF.

4. AT THIS POINT INTO THE SESSION, I WAS OVERCOME BY LOUD NOISES OF TRUCKS AND HEAVY EQUIPMENT. THERE WAS ALSO AN OVERWHELMING ODOR OF HOT ASPHALT/TAR. IT APPEARED AS IF THERE WAS RESURFACING OF A ROAD, OR PARKING LOT IN PROGRESS NEARBY.

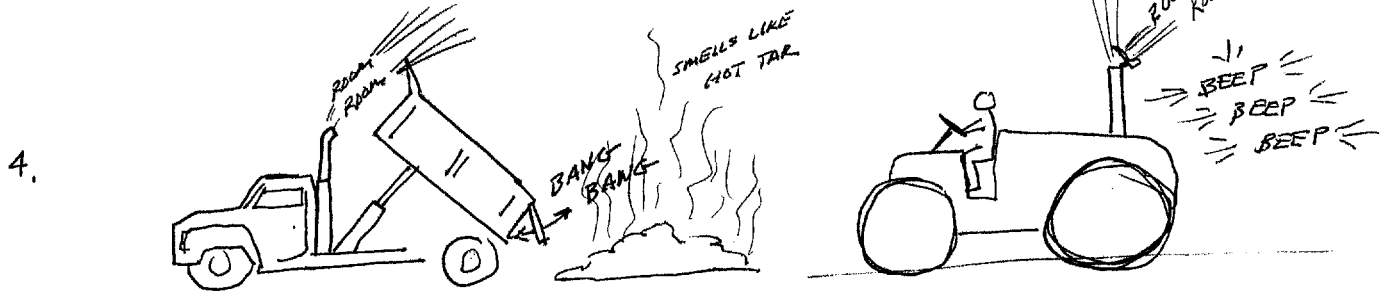
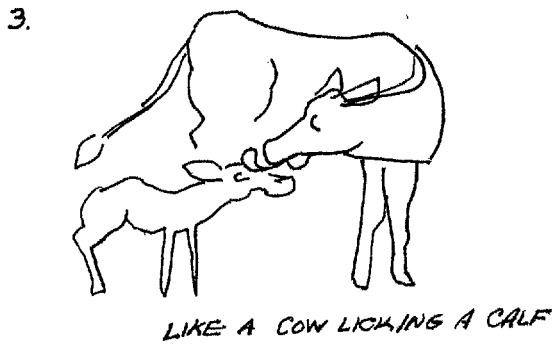
5. "BLIND" MAP DOWSING PLACED THE BEACON IN THE AREA OF BURBA LAKE, ON FORT MEADE.

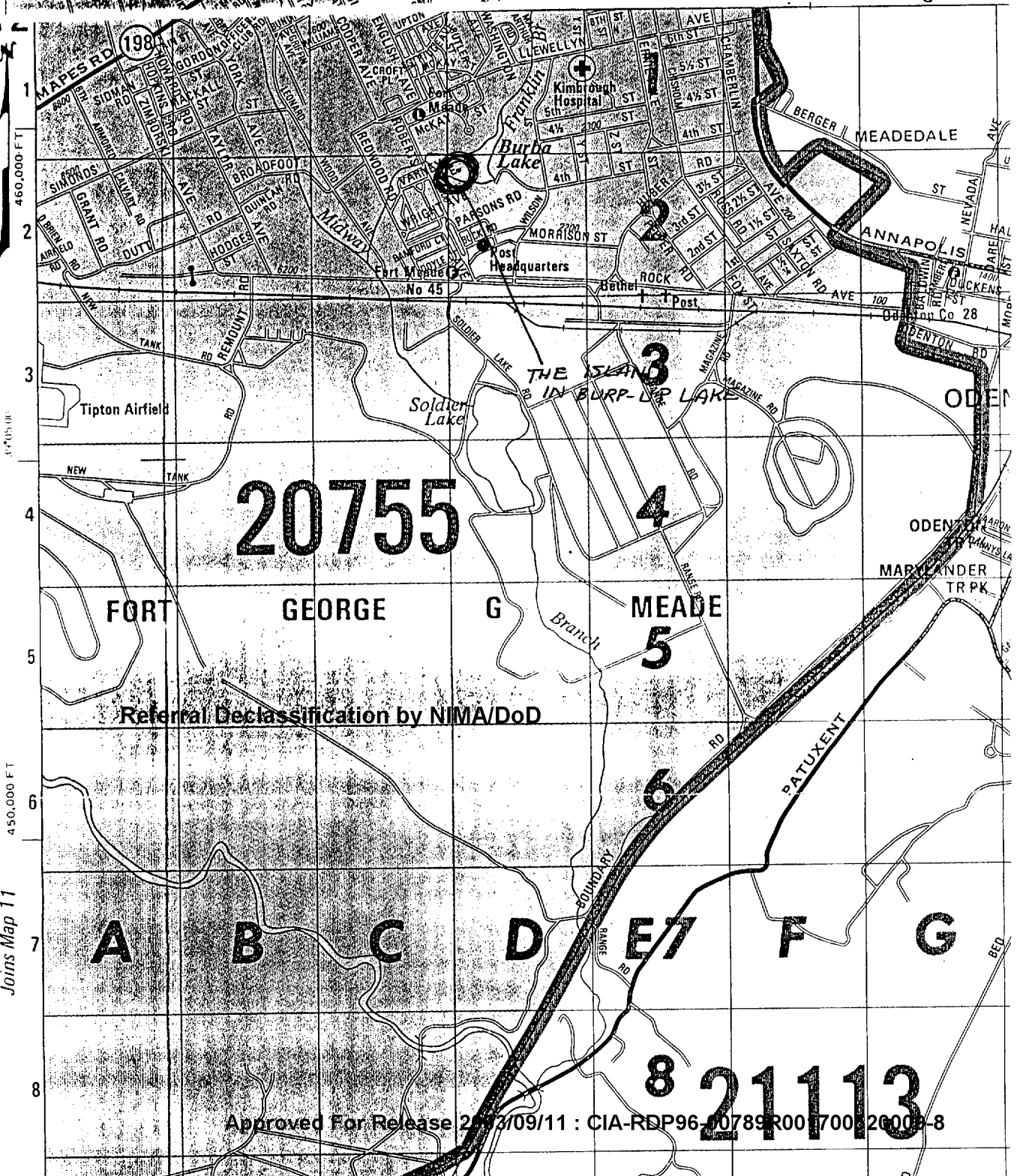
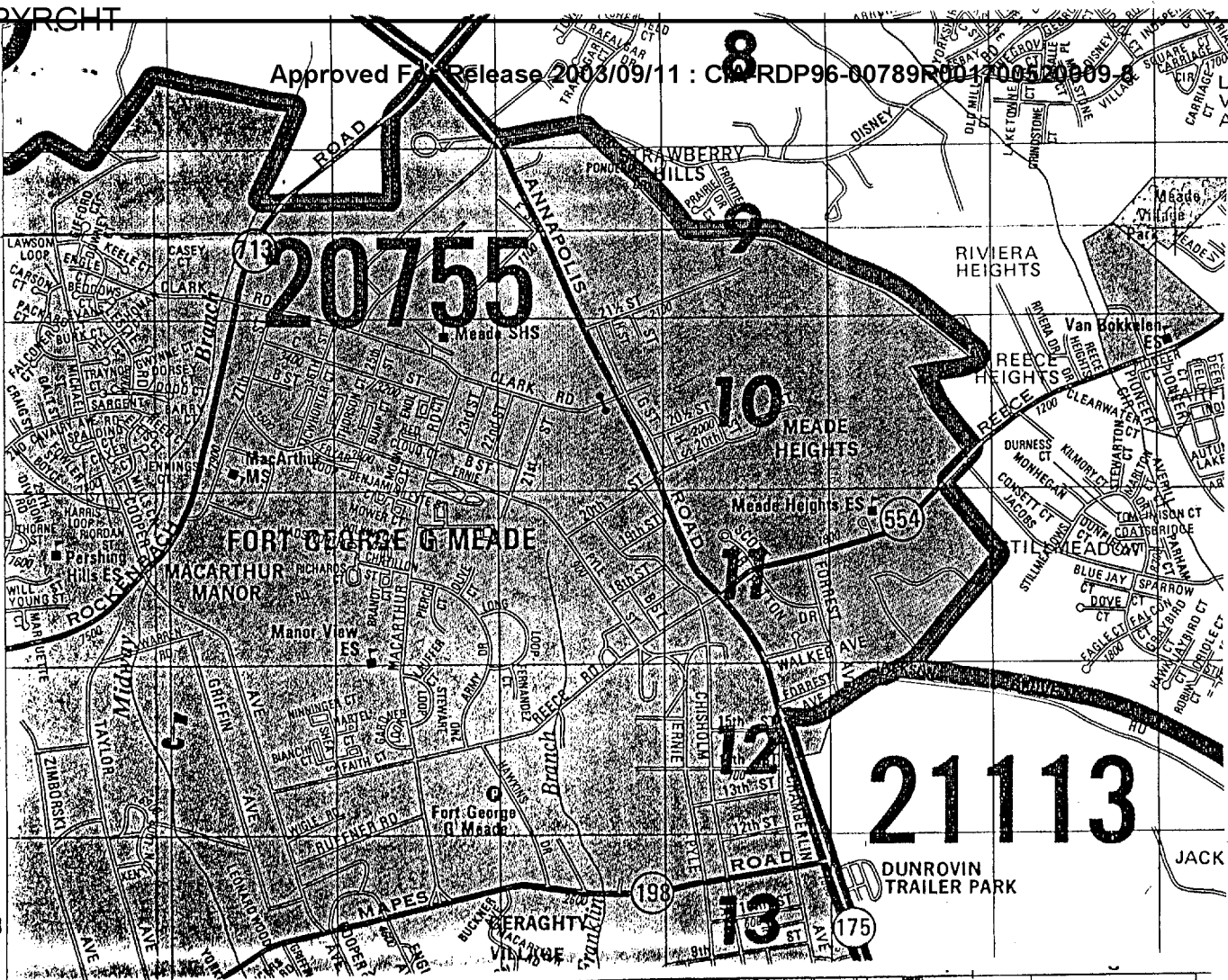
HANDLE VIA SKEET CHANNELERS ONLY

SECRET

PBRV
D890929
VO11
SO1
MSOLO
T1400-1445

^M
SUMMARY OF INFORMATION





Referral Declassification by NIMA/DoD