

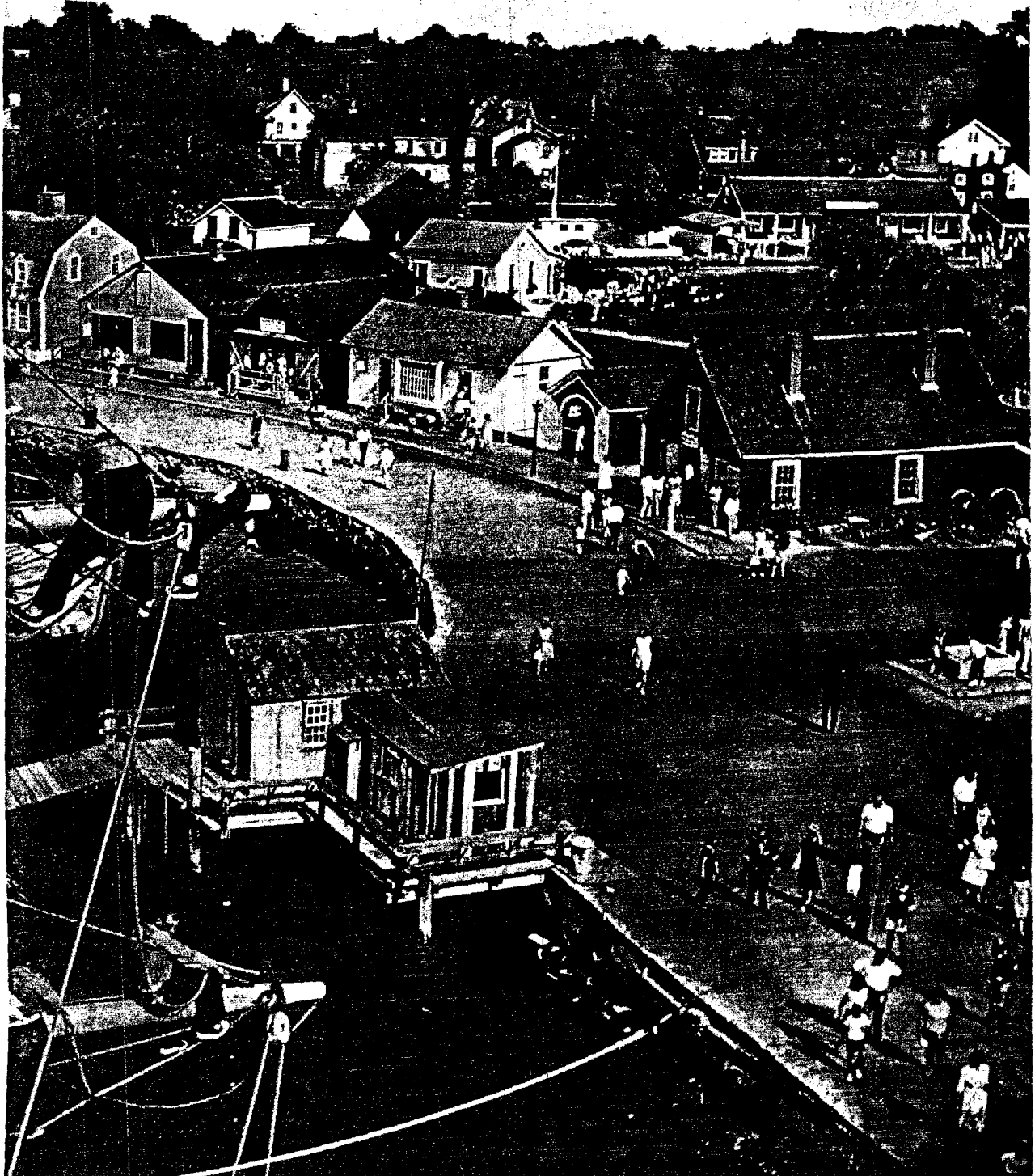
# Sail Lives On at Mystic

By ALAN VILLIERS

Photographs by WESTON KEMP

Aloft in the square-rigger *Joseph Conrad*, youngsters relive the rugged days of old.

KODACHROME © NATIONAL GEOGRAPHIC SOCIETY 221



This document is made available through the declassification efforts  
and research of John Greenewald, Jr., creator of:

# The Black Vault

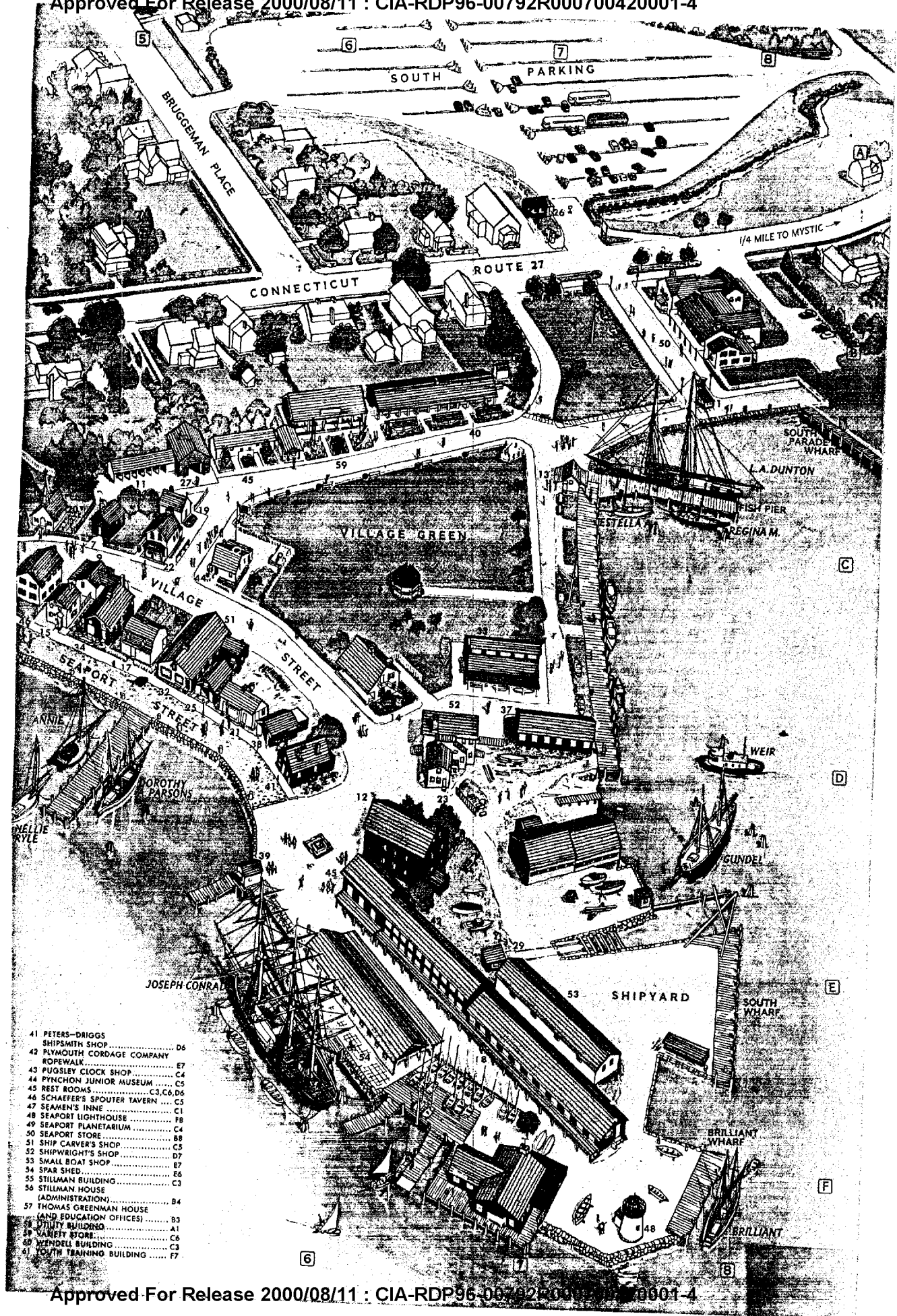


The Black Vault is the largest online Freedom of Information Act (FOIA) document clearinghouse in the world. The research efforts here are responsible for the declassification of hundreds of thousands of pages released by the U.S. Government & Military.

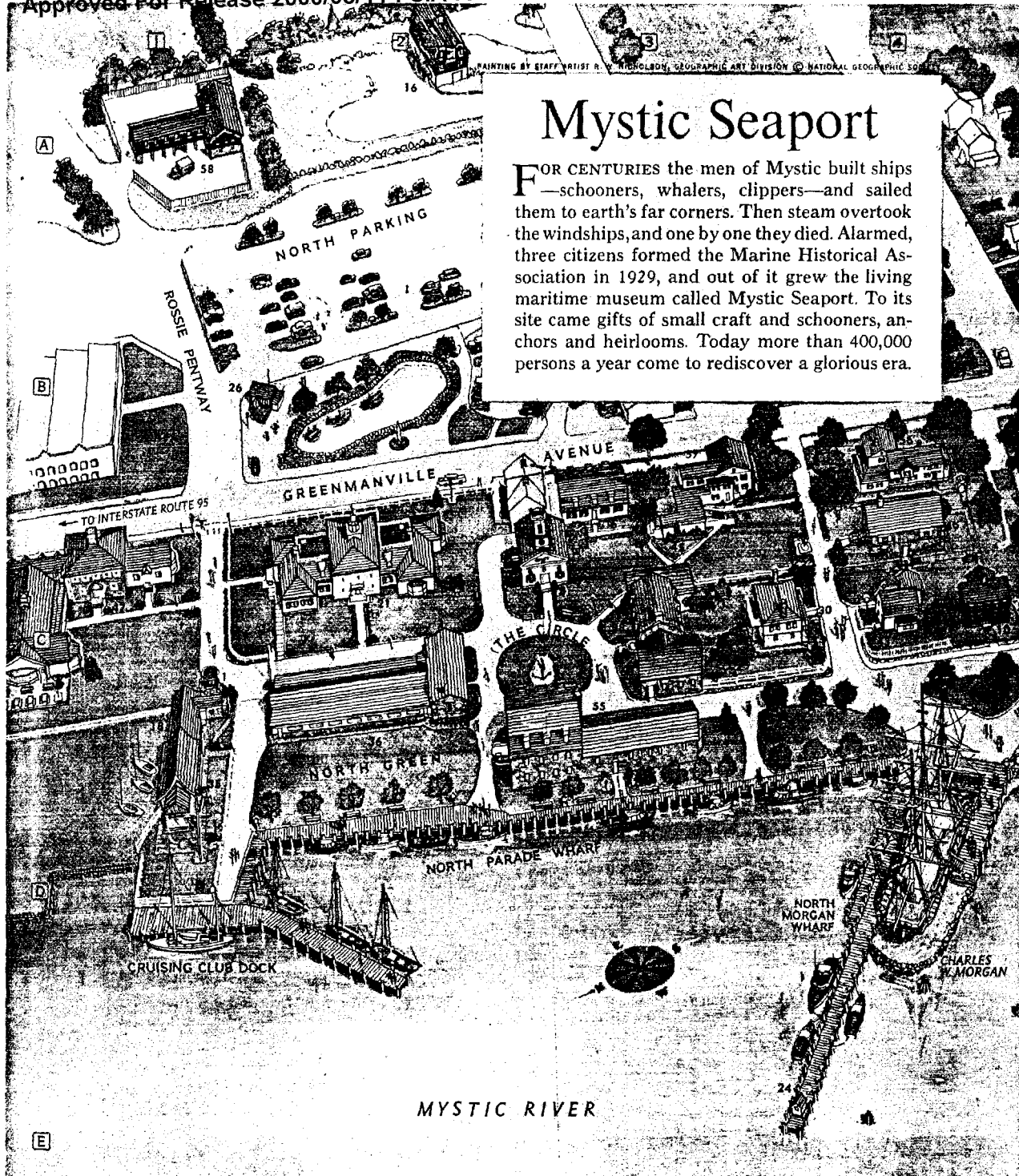
**Discover the Truth** at: <http://www.theblackvault.com>



Window-shopping for history, visitors stroll along cobbled Seaport Street, whose venerable shops face the Mystic River. As a setting for its vessel-lined wharves, the Marine Historical Association scoured the east coast for old maritime buildings and moved them to the Seaport, creating an authentic coastal village of a century ago. Horse-drawn wagon holds barrels for ship's provisions.



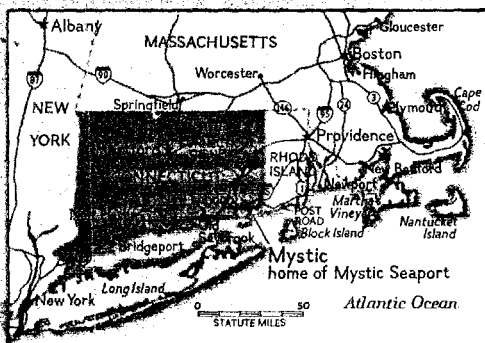
- 41 PETERS-DRIGGS SHIPSMITH SHOP ..... D6
- 42 PLYMOUTH CORDAGE COMPANY ROPEWALK ..... E7
- 43 PUGSLEY CLOCK SHOP ..... C4
- 44 PYNCHON JUNIOR MUSEUM ..... C5
- 45 REST ROOMS ..... C3, C6, D6
- 46 SCHAEFER'S SPOUTER TAVERN ..... C5
- 47 SEAMEN'S INNE ..... C1
- 48 SEAPORT LIGHTHOUSE ..... F8
- 49 SEAPORT PLANETARIUM ..... C4
- 50 SEAPORT STORE ..... B8
- 51 SHIP CARVER'S SHOP ..... C5
- 52 SHIPWRIGHT'S SHOP ..... D7
- 53 SMALL BOAT SHOP ..... E7
- 54 SPAR SHED ..... E6
- 55 STILLMAN BUILDING ..... C3
- 56 STILLMAN HOUSE (ADMINISTRATIONS) ..... B4
- 57 THOMAS GREENMAN HOUSE (AND EDUCATION OFFICES) ..... B3
- 58 UTILITY BUILDING ..... A1
- 59 VARIETY STORE ..... C6
- 60 WINDMILL BUILDING ..... C3
- 61 YOUTH TRAINING BUILDING ..... F7



# Mystic Seaport

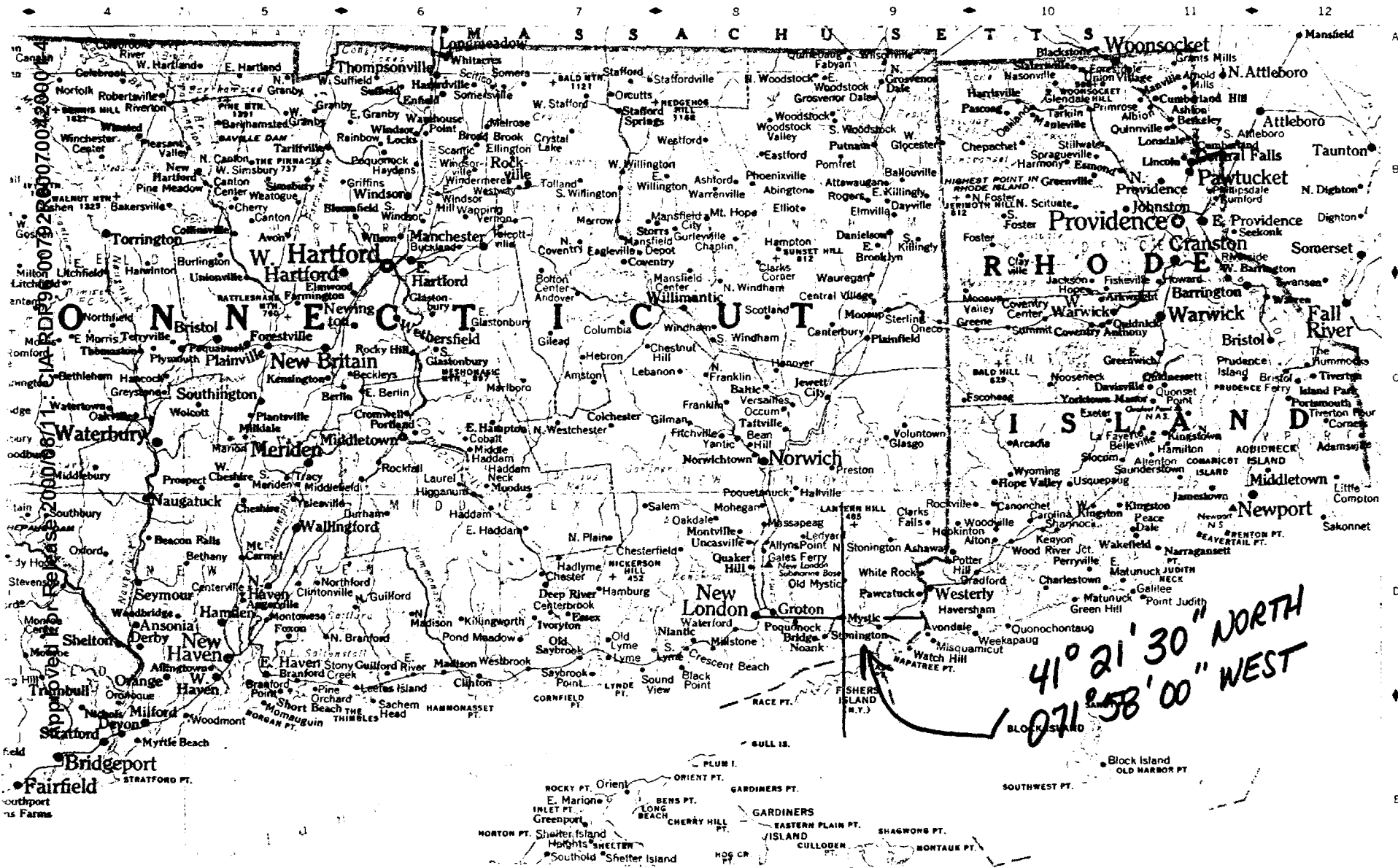
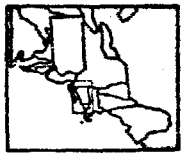
FOR CENTURIES the men of Mystic built ships—schooners, whalers, clippers—and sailed them to earth's far corners. Then steam overtook the windships, and one by one they died. Alarmed, three citizens formed the Marine Historical Association in 1929, and out of it grew the living maritime museum called Mystic Seaport. To its site came gifts of small craft and schooners, anchors and heirlooms. Today more than 400,000 persons a year come to rediscover a glorious era.

E



F

1 ADMISSIONS GATES	B8, C1	19 FIRST AID STATION	C5
2 AIDS TO NAVIGATION BUILDING	C2	20 FISHYOWN CHAPEL	C5
3 ALOHA MEETING HOUSE	C3	21 G. W. BLUNT WHITE LIBRARY	C2
4 AUSTRALIA'S SHED	D7	22 GEO. H. STONE GENERAL STORE	C5
5 BANDSTAND	C6	23 GREENMAN BROTHERS SHIPYARD OFFICE	D7
6 BARTRAM BUILDING (CURATORIAL AND ACCESSIONS STAFF)	C3	24 HARBOR MASTER	E4
7 BOARDMAN SCHOOLHOUSE	C5	25 HOOPMAKER'S SHOP	A7, B1
8 BOAT SHED	E7	26 INFORMATION BOOTHS	C5
9 BRINGHURST APOTHECARY AND DOCTOR'S OFFICE	C5	27 LIVERY STABLE	C5
10 BUCKINGHAM HOUSE	C4	28 MALLORY BUILDING	C3
11 CARRIAGE SHED	C5	29 MARINE RAILWAY	E7
12 CHARLES MALLORY SAIL LOFT, BIGGING LOFT, AND N.G. FISH CHANDLERY	D6	30 MILDRED C. MALLORY MEMBERSHIP BUILDING	C4
13 CLAM SHACK	C7	31 MYSTIC BRIDGE WEAVERS	D6
14 CLIFT BLOCK	D6	32 MYSTIC PRESS	D5
15 COUNTING HOUSE AND RESTORATION FACILITY	C5	33 MYSTIC RIVER DIORAMA	C7
16 CURATORIAL STORAGE AND RESTORATION FACILITY	A2	34 NANTUCKET COOPERAGE	C5
17 EDWARDS HOUSE	D5	35 NEW YORK YACHT CLUB STATION 10	D1
18 FACILITIES FOR VISITING YACHTSMEN	C1	36 NORTH BOAT SHED	C2
		37 NOYES MEMORIAL BUILDING	D7
		38 OLD RELIANCE BUILDING	D4
		39 OYSTER SHACK	D5
		40 PANTRY AND	E7



41° 21' 30" NORTH  
071° 58' 00" WEST

Approved For Release 2001/08/14 : CIA-RDP80-0792R000200020004

