

This document is made available through the declassification efforts
and research of John Greenewald, Jr., creator of:

The Black Vault

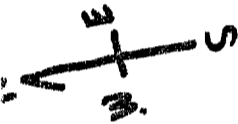


The Black Vault is the largest online Freedom of Information Act (FOIA) document clearinghouse in the world. The research efforts here are responsible for the declassification of hundreds of thousands of pages released by the U.S. Government & Military.

Discover the Truth at: <http://www.theblackvault.com>

MOUNTAINS
HERE

CROSSROADS TOWN



MOUNTAINS
HERE

NEW CITY - INDUSTRY OUTSIDE
OLD CITY INSIDE

TRAFFIC
CIRCLE

SUPER HIGHWAY

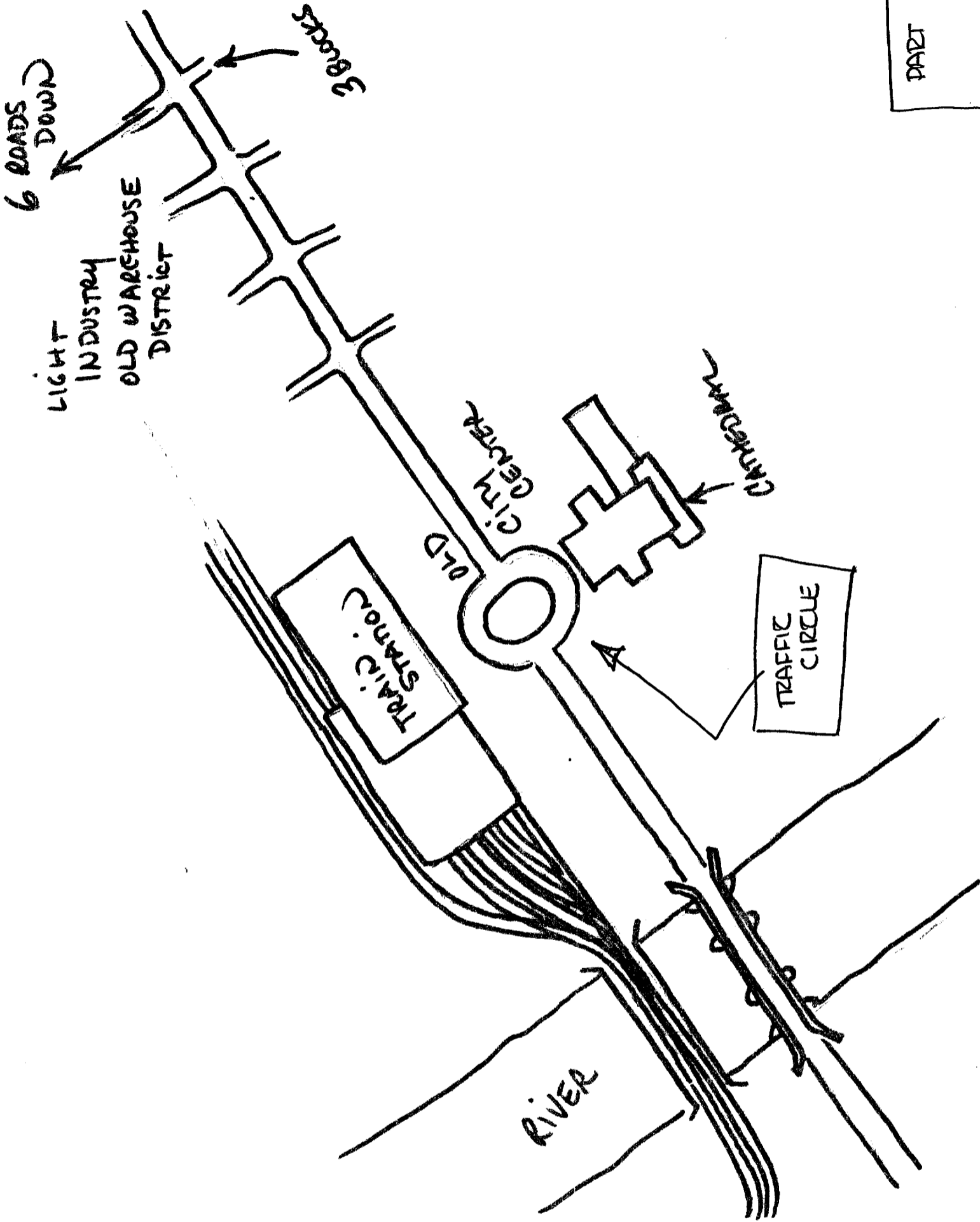
OLD ROAD

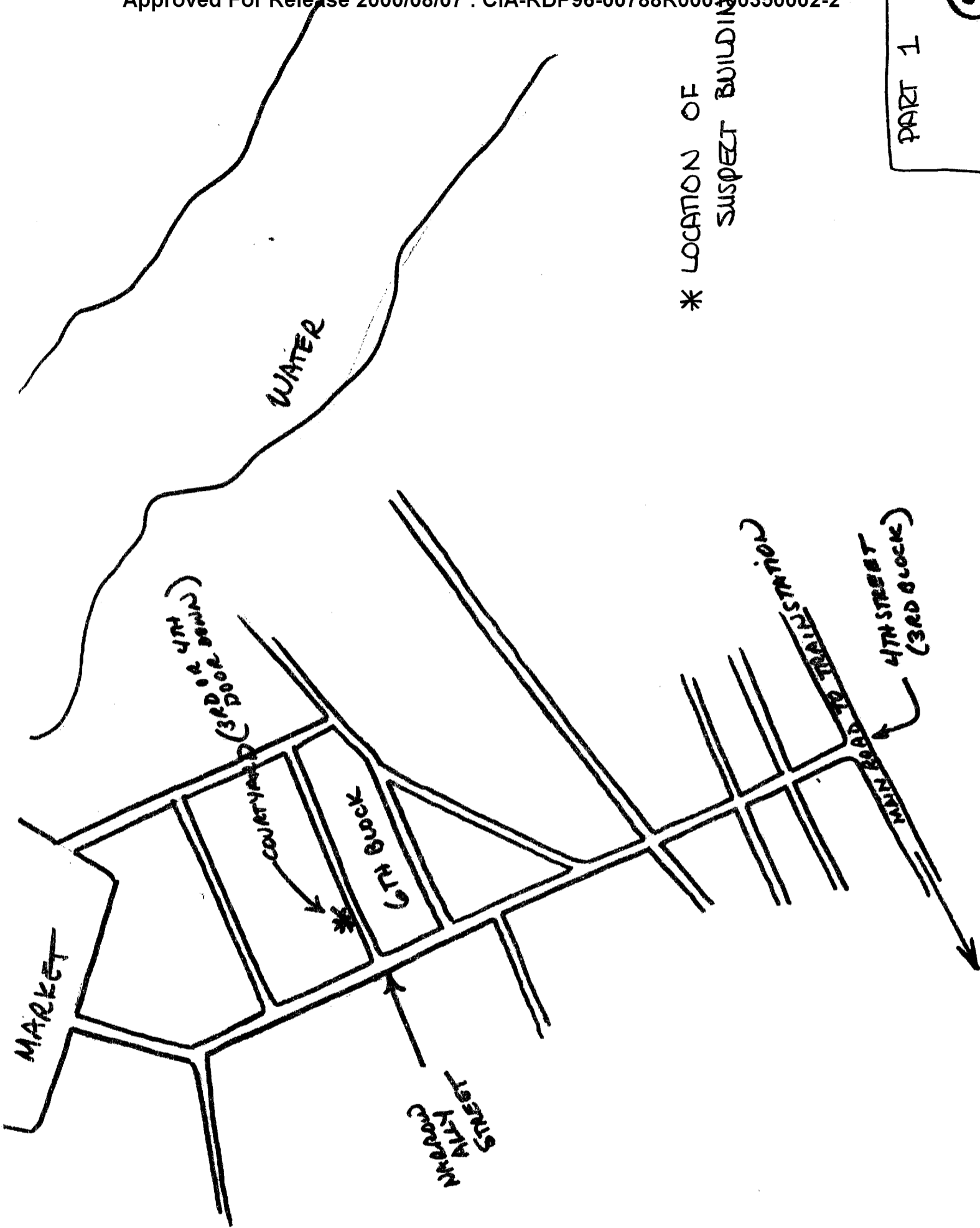
TO
A COAST

TO COAST

RIVER

RIVER



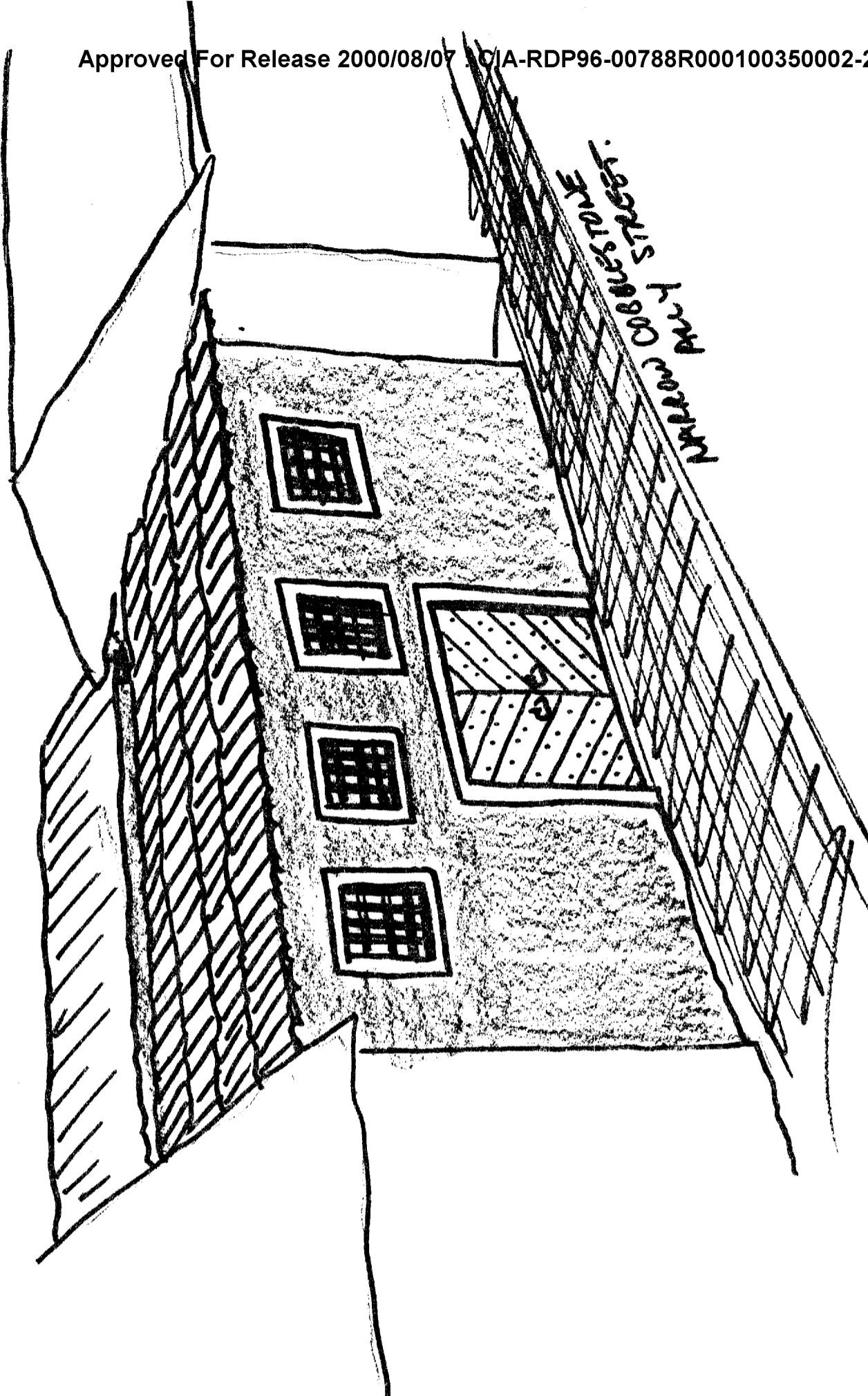


* LOCATION OF SUSPECT BUILDING

PART 1

(4)

PART 1
5



Group Composite

- Street in city (steep street)
- one house in particular (white house) on this street, on the uphill side
- 2 to 3 stories in height for the house
- local high point (a hill) is location of house
- upper end of street ends in a dead end
- tall tower is visible (2 to 3 of them)
- the hill is visible from most of the city below
- water is nearby (a river)
- a dam is about 5 miles to the ^{NW} ~~NNE~~ _W ^{WILL} ?
- river has several bridges crossing over
- much of the area surrounding the river is park land
- the city has lots of little buildings close together
- not many tall buildings in the city
- mountains in distance, snow covered
- domed building nearby

①

