

~~SECRET~~

69
19.5

ORCON/NOT RELEASABLE TO FOREIGN NATIONALS

GRILL FLAME

PROGRAM

SESSION REPORT

CLASSIFIED BY: DIRECTOR, DIA
REVIEW ON:
EXTENDED BY: DIRECTOR, DIA
REASON: 2-301c (3 & 6)

GRILL FLAME

~~SECRET~~

This document is made available through the declassification efforts
and research of John Greenewald, Jr., creator of:

The Black Vault



The Black Vault is the largest online Freedom of Information Act (FOIA)
document clearinghouse in the world. The research efforts here are
responsible for the declassification of hundreds of thousands of pages
released by the U.S. Government & Military.

Discover the Truth at: <http://www.theblackvault.com>

~~SECRET~~

TRANSCRIPT

REMOTE VIEWING (RV) SESSION CC-69

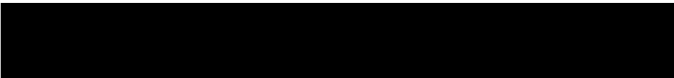
TIME

#66: This will be a remote viewing session for the 22nd of January 1980. We have an on-target time of 1400 hours.

PAUSE

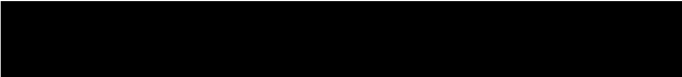
It's time now to focus your attention on the target for today. Concentrate on the area designated as:

SG1B



Relax now, concentrate, focus your attention on the area designated as

SG1B



Relax now and concentrate on the target area. Relax and concentrate, and describe the target to me.

#19.5: There's a foot...uh...there's...there's a print.. uh...indentation on the ground. There's an outline ...uh...

#66: Describe the shape to me.

#19.5 It's a square...no it's a...guess it's long. Looks like...uh...a, a outline of a, a...a... it's like the outline of a track and an indentation in the ground.

#66: All right.

PAUSE

+05

#19.5: There's a...can't...uh...shake the...feeling that it's...uh...this indentation in the ground is important. There are, there are tanks here. It's something like...uh...something like self-propelled artillery pieces. Very...uh...very large guns. Maybe 130 milimeters. There's.....

~~SECRET~~

~~SECRET~~

#66: Tell me about these guns.

PAUSE

#19.5: They're sitting on tracks, and they're...uh... they're parked in rows.

#66: Tracks as in track vehicles or railroad tracks?

#19.5: They're like...uh...the track vehicles parked in rows, and they're...uh...there's...uh...indentation in the ground. I can't, can't tell how...uh... how big it is. It's like...uh...it's like some kind of a trench or something. Looks like an impression of one of these tracks. I don't know.

PAUSE

#66: Explore the target area further.

PAUSE

#19.5: There's...uh...there's...uh...there's bunkers and there's...uh...there's a tunnel or something. A hole in the ground. It's very deep. Goes down in the, the ground. Very far down.

#66: At what angle does this go down?

#19.5: It goes...uh...it goes almost straight down, and then goes straight across. Almost...uh...at a 50 degree angle.

#66: Describe the size of this tunnel.

#19.5: It's very large. It's...uh...perhaps...uh... 20 by 15 feet. 20 feet wide, 15, 15 feet high.

#66: Examine the tunnel and describe its function to me.

PAUSE

+10 #19.5: It's for...uh...it's function for people and trucks. It's for going...going to the other side.

#66: Where is the other side?

#19.5: I don't know.

#66: Tell me the raw input data that made you say it's for going to the other side, so I can understand the raw input data.

~~SECRET~~

~~SECRET~~

PAUSE

- #19.5: It only goes one way. I feel like the tunnel only goes one way.
- #66: All right. Why do you feel the tunnel only goes one way? What are the indicators that come into you?
- #19.5: It's...uh...it's ready for use, but it's not being used. This is built for moving in, but it's not being moved in.
- #66: All right.
- #19.5: Can only be used one time.

PAUSE

- #66: What makes you say it's a one time use?
- #19.5: I don't know. There's alot of things that are stored there, and they're not used.
- #66: Describe some of these things.
- #19.5: I see...uh...see many shells like...uh...gun shells and I see many, many boxes like...uh...gun shells.

PAUSE

- #66: Tell me your position of perspective. Tell me how you're seeing this.

PAUSE

- #19.5: I don't know. I'm just sensing it.
- #66: What is your position of observation?
- #19.5: I'm in the...in the tunnel.
- #66: All right.
- #19.5: One end looks very funny, though. It looks...uh...more like a trench, or something. I don't feel there's too much else here. There is...uh...some kind of a village nearby.
- #66: All right. I want you to concentrate on the tunnel. It's important for me to understand the nature of the construction of the tunnel. Examine then, the walls of the tunnel and the super structure and describe it to me.

~~SECRET~~

~~SECRET~~

+15 #19.5: It's...uh...it's concrete reinforced. It's reinforced concrete. Most of it is...uh...rock, and most of it is...uh...fairly, fairly rough in design. See...uh...some, some reinforcement with...uh...concrete but...uh...it's...uh...mostly rock.

#66: Tell me again what moves through the tunnel.

#19.5: People, mostly. Some funny looking trucks. I think they...uh...they're military trucks.

#66: Tell me about the surface that these people would walk on and the trucks would roll on.

#19.5: This would be...uh...rock and mud, mostly, mostly rock, but some mud here too. Has...uh...about the same, same consistency. There's...uh...hard top road on this...uh...natural rock and mud. It's...uh...dried hard.

#66: All right.

#19.5: It's very cold.. this tunnel...very cold.

#66: Tell me about the activity in the tunnel right now. What is the activity in the tunnel right now?

PAUSE

#19.5: Very little. So...some crew is working there. I don't know what they're doing. It's very dark, and it's cold here now.

#66: All right.

#19.5: I sense that it's...uh..it's ready, but it's not used.

#66: Tell me about the state of readiness.

PAUSE

#19.5: It's...uh...it's ready for use. I think it's fully ready for use at any time. It's very deep.

PAUSE

#66: Examine the entrance way to the tunnel. Examine conceptually its function and describe to me how I get into the tunnel so that I might move down the tunnel.

~~SECRET~~

~~SECRET~~

- +20
- #19.5: Go there through..uh..like...uh...it's like some of...uh...indentation in the ground. It's an overhang. It's some kind of a valley. Very...uh...very bleak looking area. I don't...I don't see very much else here.
- #66: All right. When we first started talking about this area you perceived some artillery pieces on tracks, and then you found this tunnel entranceway. Are these in the same general area here?
- #19.5: Yes. Definitely they are. There's many...uh...many...uh...protected...uh...gun emplacements here.

PAUSE

- #66: Right. I have one more question now. You mentioned trucks that might move through this tunnel. Tell me how they get to the tunnel and how they enter to the tunnel, and tell me why you say they are funny looking trucks? Tell me what makes them funny.
- #19.5: They look like...uh...they look like our gamma goats. Low...but they have very large wheels. That's what makes them look funny. They drive...in the ramp...at the end of the, this funny looking indentation like in the ground. I don't...uh...I don't think I like this target.
- #66: What gives you that emotional feeling? What makes you say that about this target?
- #19.5: Uh.....I don't know. Feel like it's...uh...I don't know. Feel very strong. I think that there is...uh...there is Americans and they're here and I think...uh...they...uh...are unaware of this, this tunnel.
- #66: I'm sorry. I did not understand what you said. Would you say that again, please?
- #19.5: I just feel like there's Americans near here, and they don't know about this tunnel.
- #66: All right.
- #19.5: Just a menacing feeling.

~~SECRET~~

~~SECRET~~

+25 #66: All right. At this time I have no further questions about this target. However, I'd like to provide you the opportunity now for free-flow expression. If there's anything you'd like to add about this target, do so now.

PAUSE

#19.5: I just have a very strong feeling about the target, and I'm seeing a.....I keep seeing this imprint like in the ground...this design, and I don't know if it's ...uh...,it's...uh...an imprint in the ground or if it's a design in the ground that's supposed to be there or not.

#66: All right.

#19.5: I don't know.

#66: Why don't you draw these impressions that you've had for me.

PAUSE

#19.5: Page 1. I'm going to do this design, if I can because it seems to be a predominant feature of this.....not exactly sure how I'm seeing this. It... in one minute I'm struck is that it's just an imprint in the sand, so to speak, and the next minute I'm standing in it. So, I, I'm having trouble visualizing the actual size of this design, but...it...uh...having trouble drawing it, too. I get an idea that the end is kind of a.....

#66: Is this going to be a crosscut or an overhead?

#19.5: This is like a three dimensional where you see through it. Get the impression that...uh...tell you what it really looks like. It looks alot like a...the upside down part of a coffin. That's what it looks like, and...uh...this edge where the arrow is, being ground level. Uh...cross-sectionally, I get the impression it's a well-defined...uh...ditch like effect. I may be getting carried away here. I'm mystified by a tread imprint, you know, but for some reason, I just think there's something more to it than that. That's page 1.

It, it looks appearance wise, ok, it looks like well compressed, it's...looks like a well compressed imprint in the sand, and I don't know why I say in sand, because it's just colder than, colder than hell in this place. Wouldn't have any sand there...I don't think. I get the impression that there's a

~~SECRET~~

~~SECRET~~

like a...there's a hill coming down like that, and that there's another hill going up like this, and that...down in the bottom here is a valley, and that there's this rock overhang comes out, and up under this rock overhang, where this black is, is the entrance to this...uh...this tunnel or hole in the ground.

#66: Ok. You've had...originally...in the very beginning you just talked about an oval or a circle. Can you explain it to me how that fits in?

#19.5: Well I got a.....ok.....on page 3 I'll draw you my, my very first impression was...uh...sort of like this. Was an oval tunnel...it just kept going away and down. You know how some...how the rise of the earth curves, curves over as it goes away from you, I got the impression that looking into this tunnel it did that. As it went away from you it curved downward.

#66: All right. So the oval concept was not in, not in conjunction with the shape on the ground that you saw.

#19.5: No. But I got a feeling that while I could see this, this oval shaped tunnel going away from me that it was also black. Guess it was...for some reason it was dark, and...uh...

#66: Ok. Can we go back to number 2 and have you label some of the things?

#19.5: Yeah.

#66: They look like a bunch of squiggly lines on the paper but (laughing) label them.

#19.5: They are. They are. We'll call this valley floor. We'll call this hill...background hill...foreground hill. We'll call this...uh...front hill and this black with the arrow running to it is ...uh... tunnel entrance...and...uh...these hills all around in these hills are...uh...what I'll call FG's or fortified gun inplacements. And...uh...they're in these hills all around this...uh...this tunnel.

#66: Ok.

~~SECRET~~

~~SECRET~~

#19.5: Looks like they spend alot of time working on this thing...and the...I get the...crosswise...page 4.

Cross sectionally I get the impression that...uh... if this were ground level and this were the hill with the overhang, I get the impression that this thing r-e-a-l-l-y drops. I don't know how far out it goes, but it really drops, and that the distance to the... to this tunnel to what would be equating the ground level would probably run...uh...300 feet. This is really a deep tunnel. Almost like a mine shaft, and that there's alot of things that are stored down here in the base part. It's called base storage.

#66: Ok. I wanted to ask you something during the session, which I didn't feel was appropriate, but I'll ask you now. Uh...this steep incline is still ...it's still possible to transverse this with trucks.

#19.5: Yeah. I get the feeling like yeah you can drive down, you know. This picture doesn't depict it, but I don't have enough paper to run it out that far, you know. It's long, I mean it's like an 18 percent grade, but it goes for a long way, and it just goes down before it levels off, you know. It doesn't level off for a long time.

#66: And are there any vehicles or personnel in the tunnel at the present time?

#19.5: There's these gamma goat type vehicles, but they're not going anywhere. They're just parked, and there's all kind of boxes and shell case in storage down there. Uh...and these gamma goat type vehicles, I call them gamma goat type vehicles, but what they look like is, they look like...uh...some kind of carriers. See if I can draw one here..... Jese' I know this isn't gonna...be worth a dam, but I don't know how to draw these.....

#66: What's the purpose of the vehicle? What's its function?

#19.5: Carrying...uh...material. That's what I would say. Supplies and material.

#66: As opposed to troop transport of some kind?

~~SECRET~~

~~SECRET~~

#19.5: Well that too. I would say carry material as opposed to troops, but I'm sure it could double up as a troop carrier as well, you know. It does have some armor plating. Very strange looking thing. This being a...uh...cargo area.

I don't know what else to tell you about this target.

#66: Tell me about some of your emotional feelings.

#19.5: I just got a feeling like there was...uh...there was this...all this impressive activity going on very close to an American type unit, and the American type unit was unaware of it. It's a very...uh...aggressive type activity for some reason. I don't know. I don't know. Like on a border somewhere.

#66: Ok. How far into or down the tunnel did you explore?

#19.5: I don't know. I don't have any idea how long it goes. How far it goes, but I'm pretty sure it goes a long way. This tunnel goes a long way. I got the feeling there was...uh...some kind of a village or a town or something close by. Like in the very next valley.

#66: And this...uh...active, sense of activeness behavior that you picked up or a feeling...uh...how did you put it?

#19.5: I got a real good sense of...uh...animosity towards me personally, and I don't know why. I don't, I rarely ever experience any, any personal feeling, but I got a tremendous feeling of animosity towards myself, and I don't, I don't know why, and I don't understand that. I guess that's what bothered me.

#66: Ok.

#19.5: And, and it may also be that I was bothered because I was really, really deep into this target here, and...uh...in a literal sense, and that might have disturbed me.

#66: Ok.

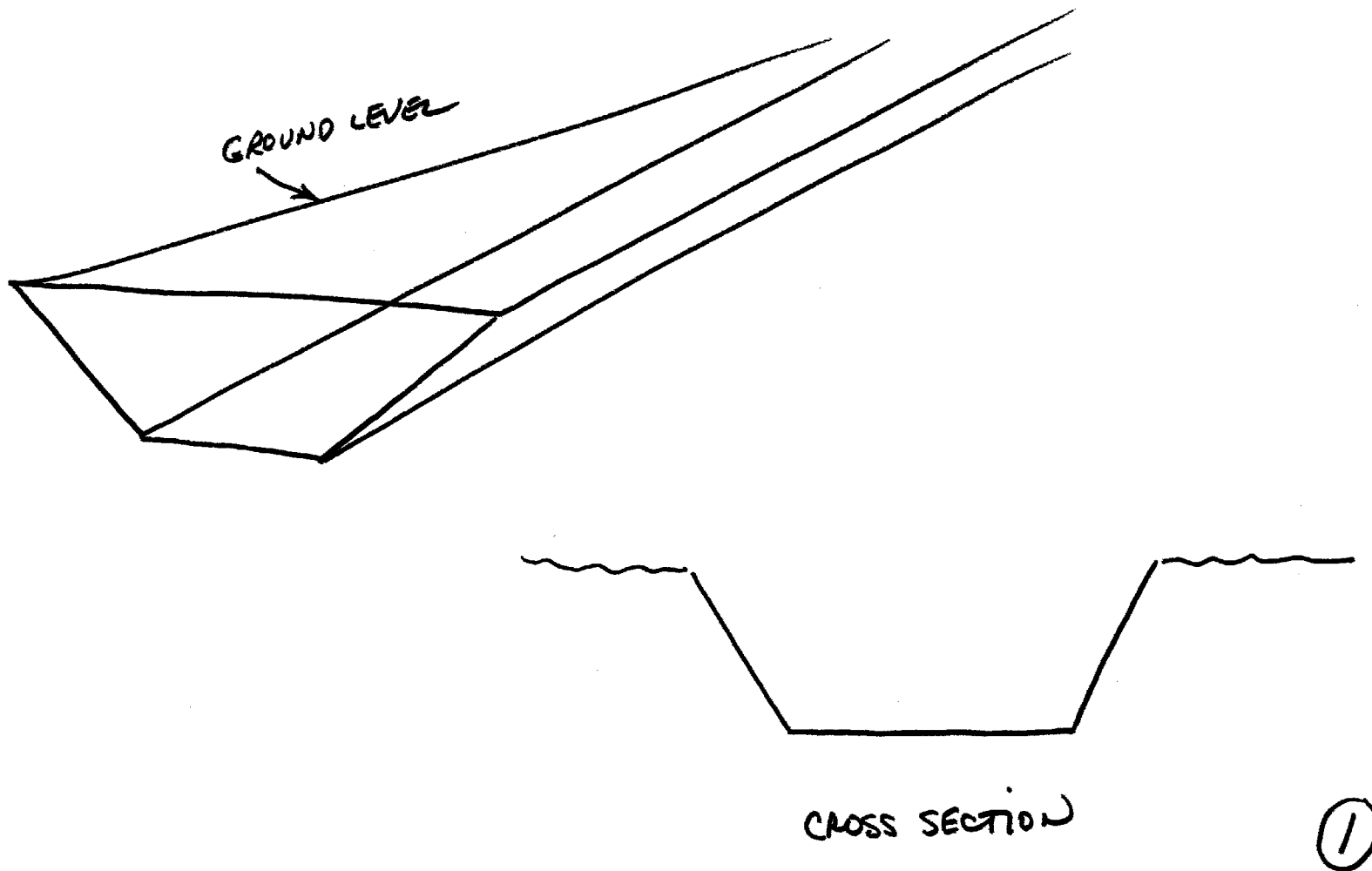
~~SECRET~~

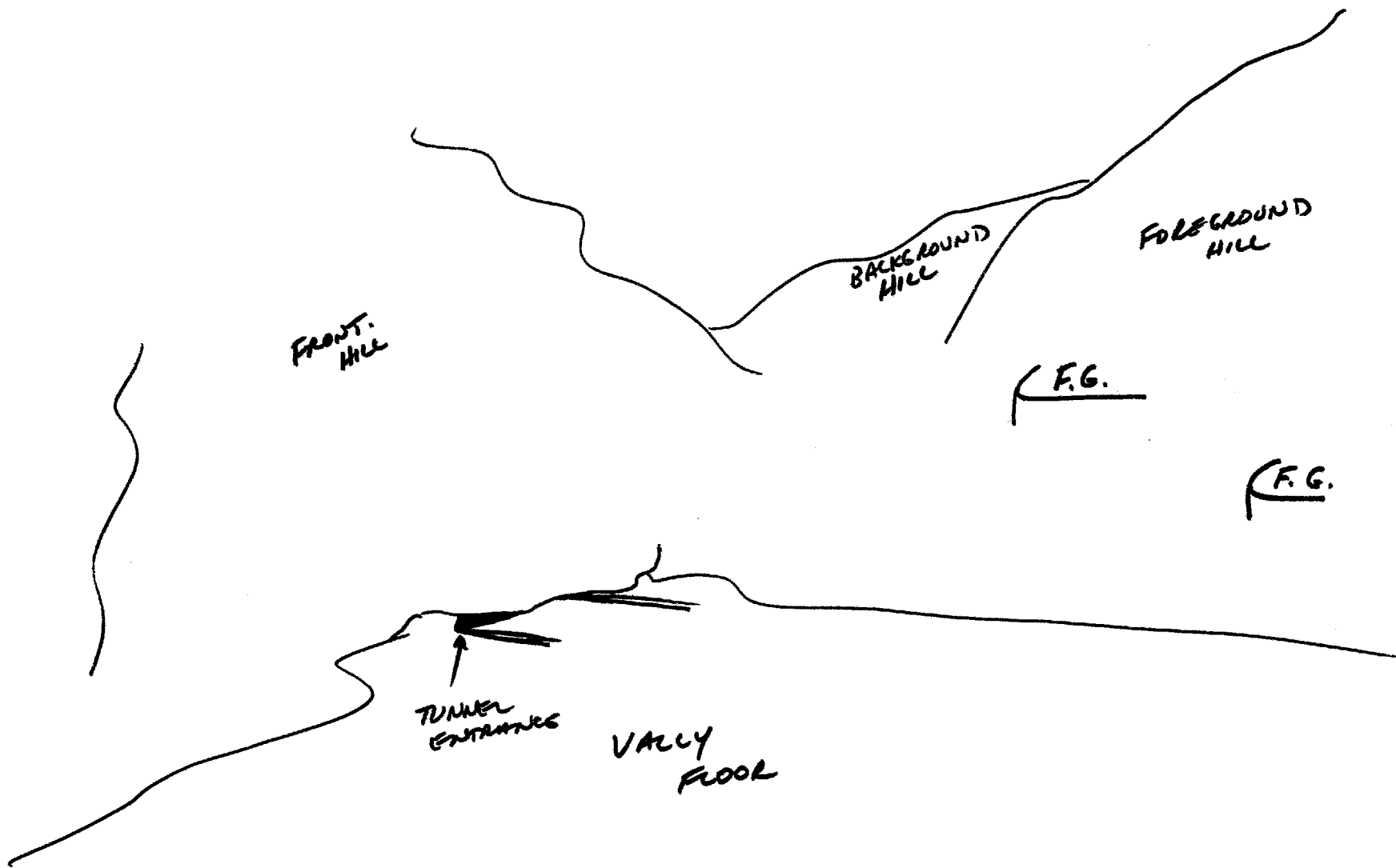
~~SECRET~~

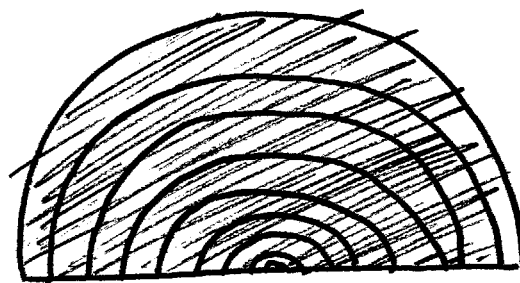
- #19.5: And this...uh...what looks like an upside down gold bar, on page 1, this...uh...impression for some reason appears to be a very important thing, and I, I can't figure out what the hell it is. It's very strange.
- #66: Ok. Anything you'd like to add then?
- #19.5: No. I'd like to see somebody else targeted against this...see if it's the same thing they get.

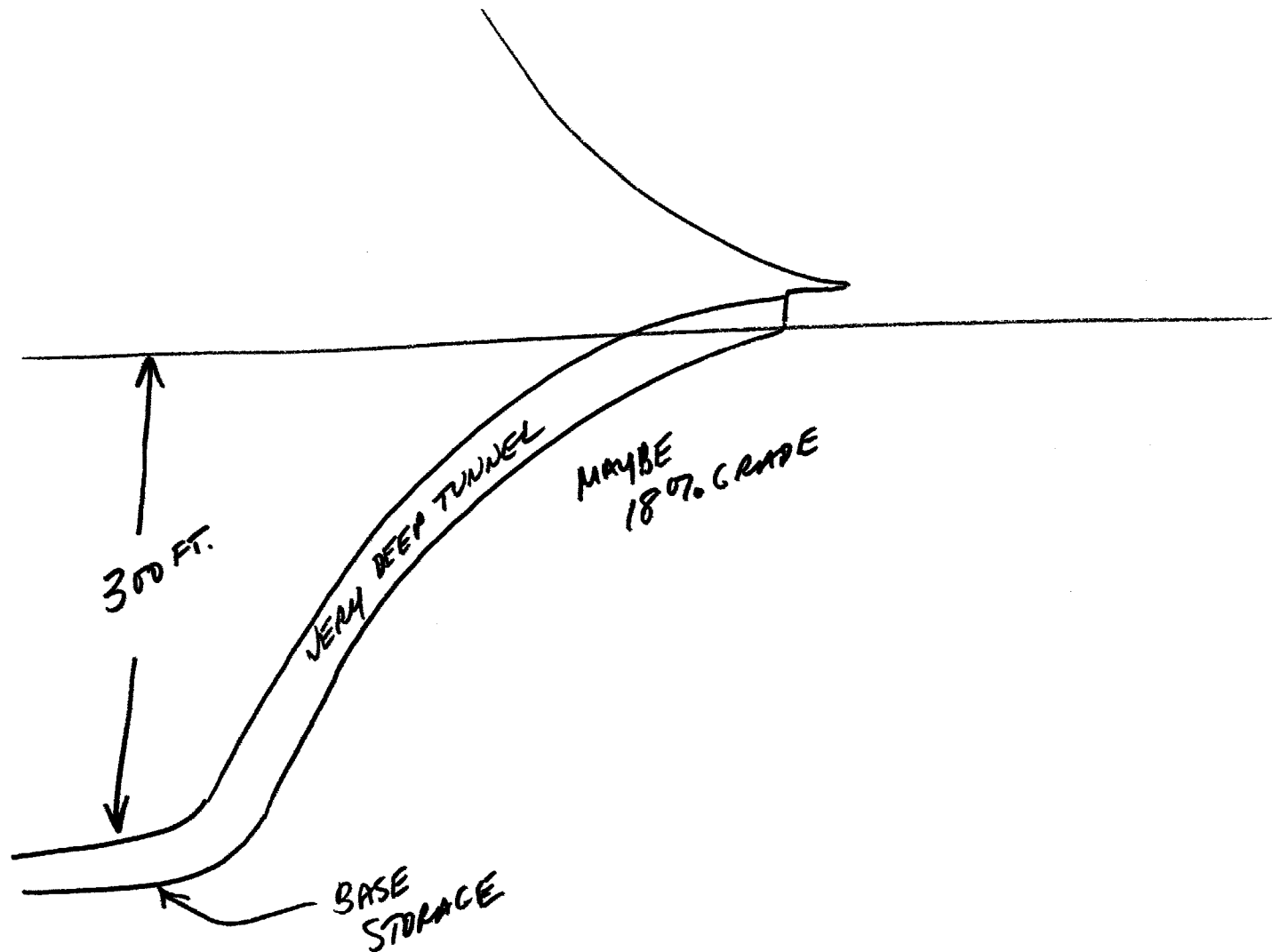
~~SECRET~~

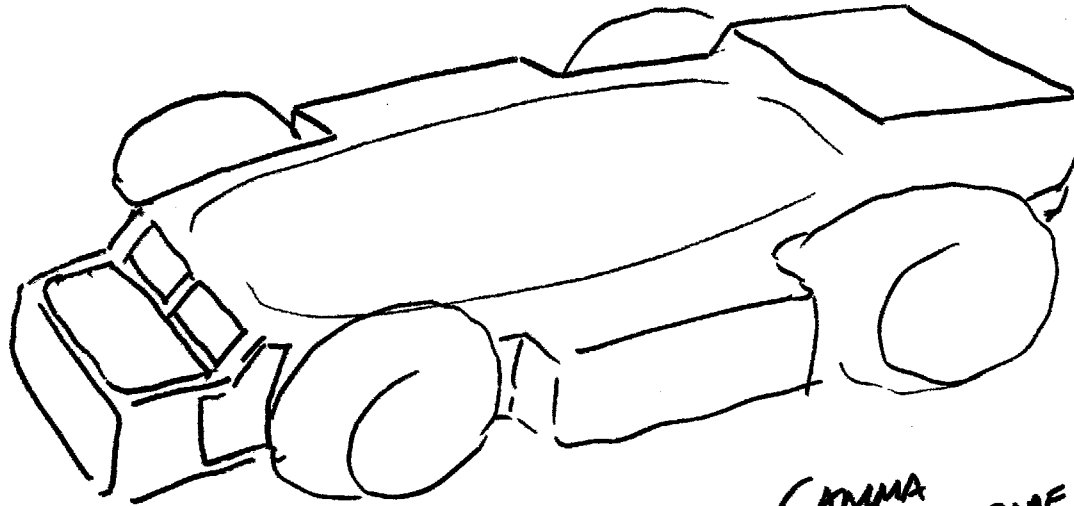
TAB











GAMMA
GOAT TYPE
VEHICLE