

~~SECRET~~

ORCON/NOT RELEASABLE TO FOREIGN NATIONALS

CCC 13
#7

GRILL FLAME

PROGRAM

SESSION REPORT

CLASSIFIED BY: DIRECTOR, DIA
REVIEW ON: March 2000
EXTENDED BY: DIRECTOR, DIA
REASON: 2-301c (3 & 6)

GRILL FLAME

~~SECRET~~

This document is made available through the declassification efforts
and research of John Greenewald, Jr., creator of:

The Black Vault



The Black Vault is the largest online Freedom of Information Act (FOIA) document clearinghouse in the world. The research efforts here are responsible for the declassification of hundreds of thousands of pages released by the U.S. Government & Military.

Discover the Truth at: <http://www.theblackvault.com>

~~SECRET~~

SUMMARY ANALYSIS

REMOTE VIEWING (RV) SESSION CCC13

1. (S) This report documents a remote viewing session conducted in compliance with a request for information on a target of interest.
2. (S) This is the third attempt this viewer has had against this target (see CC74 and CC87). The viewer was able to attain his usual state of relaxed concentration. He was experiencing the symptoms of a head cold. Ambient room noise was bad but did not disturb the viewer because of his state of deep concentration.
3. (S) The protocol used for this session is detailed in the document, Grill Flame Protocol, AMSAA Applied Remote Viewing Protocol (S), undated.
4. (S) Following is a transcript of the viewer's impressions during the remote viewing session. At TAB A are drawings made by the viewer reference his impressions of the target site.

~~SECRET~~

~~SECRET~~ANALYST COMMENTS

REMOTE VIEWING (RV) SESSION CCC13

SG1B

1. (U) Reference: City, Plan, Stock No. [REDACTED]
2. (SECRET/ORCON) CUING DATA: #7 was informed prior to session CCC13 that he had provided good and verifiable information during CC87. He was informed he was slightly off target, and that he would be directed by #66 to move from the location of his preceding imagery in an Eastward direction in short "hops" of 1/2 mile increments. #7 was shown Sketches #2 and #6 from session CC87 for targeting purposes and, at start of this session was provided geo coordinates [REDACTED]

SG1B

SG1B

[REDACTED] as a targeting assist by the facilitator. It must be noted that the analyst had inadvertently inverted the geo coordinates at the time he provided them to the facilitator for later targeting. This was not noticed by the analyst until after the following session, CCC15. The concurrent employment of prior imagery as cuing, however, apparently enabled the viewer to return to the proper desired target area regardless.

3. (SECRET/ORCON) ANALYSIS: A map reconnaissance using ref A strongly suggests #7 maintained a generally Eastward direction during the session with sketch correlation to the following areas:

- a. Sketches #1 and #2: vicinity horizontal POL storage, grid square J13, ref.

- b. Sketch #3: vicinity overhead crane and bank of 7 smokestacks, grid square K13, ref.

- c. Sketch #4: vicinity steam pipeline junction, grid square L13, ref.

- d. Sketch #5: vicinity POL storage facility #1, grid square M13, ref.

- e. Sketch #6: vicinity open field, curved RR tracks and POL tanks grid square P15-Q15, ref.

4. (SECRET/ORCON) COMMENTS: Based on session CCC13 evaluation, it was decided to reinforce imagery of Sketch #6, and maneuver in SW direction for a distance of 1 mile to penetrate the target installation.

~~SECRET~~

~~SECRET~~

TRANSCRIPT

REMOTE VIEWING (RV) SESSION CCC13

TIME

#66: This will be a remote viewing session for March 6th, 1980. We have an on-target time of 0900 hours.

PAUSE

Relax and concentrate now. Relax. Relax.

PAUSE

Relax and focus your attention.

Focus your attention.

PAUSE

On the area you have described before.

PAUSE

The area you have described as a red glow. Fire and power which is possibly a manufacturing process. The area which you perceive is coal fired with coal conveyors.

PAUSE

The area in the vicinity of

SG1B



Relax. Relax and concentrate.

PAUSE

Position yourself 500 feet over this area and once again describe it to me.

PAUSE

+03 #7: Saw tooth. A roof with a saw tooth.

#66: All right.

PAUSE

~~SECRET~~

~~SECRET~~

#7: Adjacent Adjacent I have a big
. big tank. Big storage tank. . . like shapes.
Dress right dress. Position horizontal (not audible).

PAUSE

Water tower. Wet.

PAUSE

To my right. . . of tanks. As cold as it is
don't think these tanks have water.

PAUSE

+05 #66: Describe your position of observation.

PAUSE

#7: About five or six hundred feet up.

PAUSE

#66: Describe what is immediately below you.

#7: Oh, okay.

PAUSE

Looks . . Looks like big, big rubber belt.
Like fabric (not audible).

PAUSE

It got over roller. . (not audible).
Got a metal cleat on it. All kinds of
buildings.

PAUSE

Sheet. . sheet iron.

#66: All right.

#7: Sheet iron. . . in buildings.

PAUSE

+08 Appears to be . . . multiple steamlines on a . . .
stands above ground. I'm looking down a suspension
joint.

PAUSE

~~SECRET~~

~~SECRET~~

#66: All right. Holding your altitude. . .

#7: Its . . . Its. . This is an interpretation. I know I shouldn't but, it seems like this is a power plant. . . . With the steam lines and . . . conveyors.

#66: Okay, from this area now, holding your altitude, move East. Holding your altitude, move East, 1/2 mile and describe that area to me.

PAUSE

+11 #7: Let's see. . . it looks . . . it looks . . . It looks like a ore pile. Looks like ore pile.

#66: That's fine.

#66: Explain.

PAUSE

#7: Big pile of stuff that's more grey than black. Looks like coal pile but it is not coal. Its not coal, its pile of could be iron ore. . . could be limestone. I don't know.

#66: All right.

#7: Its

PAUSE

Trying to figure out. . . The ore pile is one the what would be the . . . shady side of this big building.

I see a . . a building over there that's . . looks like its got a . . abandon tractor treads. Big metal belts. There's some of them coiled up next to a building and some of them just double back once.

PAUSE

But on the flat side I think its . . it looks like tractors.

#66: All right. Very good. Maintaining your altitude move one more 1/2 mile East.

#7: East.

#66: You will now be one mile from your original point. East.

~~SECRET~~

~~SECRET~~

#66: Describe this area to me.

PAUSE

+14 #7: Wait a minute. I'm all turned around, but . . . I think I'm looking East and down to my right are quite a few . . . metal stacks. Metal . . . like . . . Huh.

PAUSE

Looks a lot like a shady plant (not audible). With all the . . .

PAUSE

Stacks associated with . . painting. They exhaust the hydrocarbons high above the plant.

PAUSE

There are long buildings.

PAUSE

I . . I got a flash of . . . some kind of a . . . a coal or ore unloading somewhere in this vicinity.

PAUSE

#66: All right. Maintaining your altitude. Maintaining your altitude once again, move East. Move East. One-half mile.

PAUSE

#7: I . . .

#66: Describe this area to me.

PAUSE

#7: Oh well.

PAUSE

+19 It doesn't make sense. To the . . my left, I guess that would be North, . . I see a shape that reminds me of a suspension bridge shape. That's to my left. To my right. . . it looks like glowing again. Glowing.

PAUSE

~~SECRET~~

~~SECRET~~

+20 #7: I get a feeling, for some reason, close up there's a lot of pipes. . . layed out parallel like printed circuit boards.

PAUSE

Only 100 times bigger.

PAUSE

Ha ha ha

PAUSE

Ha! I saw a . . . I saw a . . . a face superimposed over these pipes. At first I thought it was George Washington. And then it looked like Stalin. He's dead.

PAUSE

#66: Okay, maintaining your altitude, move again East. Move East even further, another half mile. You will now be two miles East, two miles East of your original point. Move East. Move East and describe this area to me.

PAUSE

#7: Damn. I'm down on the ground. Just a minute.

PAUSE

Okay. I'm back at altitude.

#66: Position yourself two miles East of your original point. Two miles East of your original point.

PAUSE

+24 #7: What looks like a . . . I see. . I see a martialing yard from here, but . . .

PAUSE

#66: Explain.

#7: A martialing yard.

PAUSE

Yeah, its . . train station. Making up trains here. Sorting cars. Proper sequential position.

5 ~~SECRET~~

~~SECRET~~

#66: All right.

#7: Drop off. Cross country.

#66: And immediately below you. Immediately below you.

#7: A big stack. Brick. Brick.

PAUSE

Lots of . . .

PAUSE

Parallel . . long buildings. Parallel. That would be . . . South of the . . . stack.

PAUSE

#66: All right.

PAUSE

Move again now. Move again, further East. Move away from your original point further East one more leg. One more half mile. Move East. 2½ miles from your original point and describe this area to me.

PAUSE

+28 #7: Looks . . . a little more sparse to the left of me.

I thought. . . things on post, I thought it was . . . Things on post, I thought it was a . . sub station.

PAUSE

#66: All right.

#7: Its like a white spray column shape like. Like Hmmm. Damn.

PAUSE

Like garden spray column (not audible). White. Can't identify what causes it.

PAUSE

I think it looks like . . . looks like apartment - the building shape's to the South.

PAUSE

6 ~~SECRET~~

~~SECRET~~

#66: All right. Maintaining your altitude, move once again. Move East once again. Three miles from your original point. Move one and a half mile further East. You are now three miles from your original point.

PAUSE

Describe this area to me.

PAUSE

+33 #7: I don't know. Oh well.

PAUSE

I don't understand this. Its . . . It reminds me of . . . of inflatable. . inflatable . . plastic enclosure. Off to the right there. Its big and smooth. There's all kinds of . . . all kinds of things. There's small buildings. Piles of . . . debris.

PAUSE

It looks like a . . . big fenced in . . area with a . . kind of ahead of me and to the left. I'm seeing . . highly complex . . overlapping cone shapes. I think they've got some kind of tests. . . tests . . . some kind of test. I see parallel linear - I'm down . . about. . .

PAUSE

20 feet off the ground right now. I saw . . . parallel linear pattern coming from a great distance straight towards me like, like . . the perspective looks like with . . two close to the end of linear pattern with a 20mm lens. Its real big. Its real small the further away it goes.

#66: Tell me what makes you say test.

#7: Well, it looks like a big area. Spread out. And I saw a concrete . . apron thing over there. Looked like it might have been a little higher than the surrounding. . . The whole thing looks like . . . a giant bar relief. Kind of like monotone. I was looking for vegetation. I see some big round - round ended . . . cylinder tanks over there with . . . several . . Oh, several vertical pipes. . . right next to it.

+40

PAUSE

~~SECRET~~

#7: But this was smaller tubes coming up. . vertical and turning roughly South. It seemed to be venting some kind of . . some kind of gas or steam.

PAUSE

Fairly high pressure because it extends from a tube in a straight spreading linear pattern rather than . . lazily drifting off like venting low pressure steam. There are several. . . .

PAUSE

vertical tubular shapes over there in a row. About $1\frac{1}{2}$ times or the height is $1\frac{1}{2}$ times the diameter.

PAUSE

Looks like . . I don't know, its either a . . . railroad spur loops or cables laid out down there.

PAUSE

I got a weird sensation of a . . . a high frequency - like I'm shaking or quivering from the high frequency.

#66: Okay. I have no further questions about the target area at this time. If there's anything that you'd like to add, please do so now.

PAUSE

#7: There's one thing. This side of the fence, I think I just saw . . . I don't know. Top of a flame I guess it is. It was very short lived. It phooed out and just quit. There is a building down there. And that's about it.

#66: Okay. Relax and concentrate now. Relax and concentrate and review your imagery now before drawing. Relax and concentrate.

+45 #7: I can't remember all of that.

PAUSE

TURN OVER TAPE

~~SECRET~~

#31: Well, what I'd like first is we use some acquisition imagery to get you on target and some words as well which were from your preceding session. If you would . . . your first imagery associated with this section where storage tank shapes, dress right dress, okay, if you would give me a quick sketch of that, we can start with continuity in the debriefing.

PAUSE

#7: I had the feeling the end of these things were rounded. Bowed indicating they might be high pressure tanks.

#31: Okay.

#7: I never realized that until just now. I was aware that the ends were rounded but just never realized what it meant.

PAUSE

This is very crude. The saw tooth . . . as I was looking to the Northeast, seemed to be kind of facing South. And I thought this was glass in this area here. I assume its to get light in.

#31: Okay and they're on the right side of the sketch (not audible) the tanks.

#7: Yeah, these things were on some kind of a stand and I felt they must be 15-20 foot long at least.

#31: Uh, long, okay I see from your sketching there, then they're laid horizontally?

#7: Yeah, they were horizontal to the ground.

#31: Okay.

#7: I see them not on the same plain as this building. But really in real life they were. They were off somewhere to the right.

#31: Okay. Fine.

#7: There's a lot of these.

#31: Yeah, okay. That was your acquisition imagery then. At the start of the session. Uh. . . also before your first movement, you had multiple steam lines on stands above ground, okay?

#7: I remember steam lines; I don't know where they were. I mean I don't know where I moved or not, but it would be up to the East would be some kind of building, I don't remember.

~~SECRET~~

~~SECRET~~

- #31: Well, is it associated with your Sketch 1?
- #7: No, I thought it was over to the left over here.
- #31: Okay.
- #7: I don't know whether its in the first touchdown. I don't know where, where it was in time, but I remember where it was relative to my view.

PAUSE

And there was some kind of big building here and this was going along the side of the building.

PAUSE

It seemed like there was a conveyor or something. . I saw. . Yeah, there was a rubber fabric belt. I couldn't see the whole thing - where it was coming from but I saw very clearly inset down here in the bottom.

- #31: Number 2, okay.
- #7: Of Number 2.

PAUSE

I don't even know if there is a thing shaped like this, but this is what it looked like to me. It looked like an angle iron or . . . It was attached to this belt. And, I don't remember if it was moving or not, but I felt it moved in this direction. And I saw pipes, I saw this, I thought for some reason with the other things I saw around, I thought we might have some kind of a . . . power station of some kind. Perhaps steam plant. Maybe generating steam for some of the other buildings here.

- #31: On this Sketch 2, do you have a feeling for the diameter of the steam pipe? The size?
- #7: Yeah, I'd guess about 12-14 inches.
- #31: Okay. And how about the belt? Do you have a feeling - just a quick feeling for ??
- #7: Yeah, I would guess meter/meter and a half wide.
- #31: Okay.

~~SECRET~~

~~SECRET~~

- #31: All right. Your first movement to the East, do you have any more for that?
- #7: No, I was trying to remember the first movement to the East.
- #31: Okay, well that comes after this portion of the sketching here. In your first movement, your touchdown, your words were "looks like ore pile - big pile of stuff, more gray than black, but not coal, its a pile or iron ore or limestone."
- #7: It seemed to have broken flats or facets on it. . . which looked different than coal.
- #31: Okay.
- #7: I tried to figure out why I said ore instead of coal, since we've been talking about coal down here at Number 2. Or, I felt there was coal associated with Number 2.
- #31: Um hm. Okay.
- #7: And then I move on and I see a pile and I said ore and I don't know why I said that. Except it did look different.
- #31: Um hm. Okay. That's fine.
- #7: And there was more than one pile. Just a heaping pile looked like a bull dozer had been pushing on it. . on one side. I don't know whether you want that or not.
- #31: No, we can go on. On the tape is enough for that.
- #7: Just a pyramidal shape.
- #31: Pyramidal shape?
- #7: Yeah, roughly. The flat on one side of one of the piles I saw.
- #31: Okay. That's fine. At this point or in this area of your touchdown, your first touchdown, your words were "on a shady side of a big building, something looked like abandon tractor treads, a big metal belts coiled up next to the building, some were just double back once others appeared to have been coiled."
- #7: Yeah, it seemed like tractor treads.

~~SECRET~~

~~SECRET~~

- #31: Okay. All right.
- #7: Could be. . Okay. It could have been a tracked vehicle of any kind treads. But it looked . . .
- #31: But associated with a vehicle, am I right?
- #7: I didn't see any vehicles, all I saw was this big metal building, grayish and I remember it . . . And I found myself asking myself, why is it on the shadow side. Because there was no shadows. You know.
- #31: Um hm.
- #7: There was no highlight sides, there were no shadows; but yet I felt that that was on the shadow side so I felt okay it must be maybe on a North side or Northwest side of the building.
- #31: Okay. That's fine.
- #7: And did you want a picture of the treads?
- #31: No. I'm just . . some of these things I'm saying just to bring your thought through the session, okay.
- #7: Yeah.
- #31: But that . . .
- #7: They had flats on them, you could see them each place they bent you could see big broad flats.
- #31: All right. As though they were plates linked, something like that?
- #7: Yes.
- #31: Okay, so now we move to your next touchdown, your next movement of $\frac{1}{2}$ mile.
- In this, I'd like a sketch. At this point you are about 20 minutes into the session and your verbal description is "the metal stacks like painting stacks to exhaust hydrocarbons high above (not audible)".
- #7: Oh, that's like a sugar plant. Holabird.
- #31: Yeah. I believe you did make that - okay. High above plant and long metal buildings.
- #7: Yes.

~~SECRET~~

~~SECRET~~

#7: Back in this complex there's a lot of buildings all around this darn area. Back in here somewhere was . . . like a 20 inch iron pipe. A lot like this incinerator pipe down here. I guess that's an incinerator.

#31: Okay.

PAUSE

#7: And there's a lot of stuff back in here. Just all over, geometric patterns in here.

#31: You may want to hold that there for a second, Sketch 3. Also, the reason, also at this touchdown you said you had a flash of coal or ore unloading in this vicinity.

#7: Oh, I had forgotten about that.

#31: Is that sketchable on through, or possible an arrow would suffice?

#7: It was off to the . . . off . . . I felt very confused at this point and I started to analyze and I started to figure out what was going on and I remembered I really wasn't supposed to. But I got a flash of the kind of thing I had seen along the tread shipment point. Like it was a river or a . . . harbor. I see big clam shells lifting coal off barges and I thought my God , you know, I'm in the middle of a land mass here you know, there's no ocean here. Then I realized I was analyzing and I backed off of it. And the only pure image I had was the clam shell off-loading ore or coal from a linear object would could have been train cars, could have been barges, I didn't know. I didn't play with it anymore.

#31: Okay, that's fine. That's to the left?

#7: That's to the left on Number 3.

#31: Okay. All right. Third movement now coming up. At this touchdown you had, let me see, where are we. You had a feeling that to the left and then you said that must be to the North is shape reminded you of a suspension bridge shape.

#7: Oh yes.

#31: To the right is glowing again. Okay. And also at this touchdown point, you had a lot of pipes layed out parallel like printed circuit boards only hundreds of times bigger.

13 ~~SECRET~~

~~SECRET~~

- #7: Okay. Yes I remember that. That was all in the same position, but The suspension bridge shape gave me all kinds of trouble because I had just shook the feeling about water. The previous touchdown. I thought Oh, here we go again. Bridge. Normally you cross water. And I looked and I . . . on the moving imagery I just couldn't focus on any water. I tried to figure what the shape was and I wasn't sure it was a bridge but I thought I better report it and I still don't know what it was but it was . . . Oh, basically there was a . . . like big columns, or pillars like with a . . . suspension shape inbetween and I . . . wasn't comfortable with this. I saw vertical lines appear and I said Oh, no your making a bridge out of this. And about there, I shook it and got away from it. I don't know what the heck it was.
- #31: Okay.
- #7: I don't know whether vertical lines I invented because it reminded me of a bridge or I am sure of the inverted curve like that.
- #31: Okay.
- #7: Oh yes, there was glow off over in this direction. And, there's some geometric shapes over here. There was activity over here. Then, somewhere to the right and I don't know if they're connected or not, I saw a lot of . . parallel pipes and they were going, some were going in different directions under each other. . And, . . . I thought of . . I tought of New Jersey going up . . past those cracking plants sort of thing. I've seen that sort of thing before. But, I thought, Hey I know what this is, this is a cracking plant. But then I didn't feel comfortable in saying so.
- #31: What do you mean by a cracking plant?
- #7: Petroleum cracking. Where you make lighter oils, gasoline, kerosene from heavy crude.
- #31: Okay.
- #7: I had seen. That was the kind of pipes. So I looked around for some of the things that I would recognize that went with cracking plants and the image was pulsing and moving, fading in and fading out, and I couldn't find the things that I was looking for to say, Hey,

~~SECRET~~

~~SECRET~~

this is it. This is a cracking plant. But I remember all the lines going in different directions - pipes with vertical tubes and things reminded me of cracking plants I've seen. I immediately thought of along the Jersey Turnpike there toward New York.

#31: Okay. That is on the right in Sketch 4.

#7: But the way patterns were laid out the overall feeling of this thing was I think I said, you just said I said it. Like a printed circuit board. When you're up high looking down at it it was very geometric, very linear.

#31: Okay.

#7: These things are separate you know I could not connect them together in a total scene. I'm sorry.

#31: No. That's okay. That's fine. When you're doing this type of work you know, you get various imagery from different directions and so. Okay, I guess we are now at the fourth - we move on into the fourth touchdown. This one, you had the feeling you were on the ground to start with and then you got yourself back up in the air or you got your focus up - moved up higher. A martialing yard, trains, associated at this point, or possibly not associated, but at the same period of reporting, a big brick stack was below you and a parallel long buildings to the south of the stack or what you perceived to be the south of the stack.

#7: By the way, I can draw a heck of a lot better than this but I don't know what's wrong with me today.

PAUSE

Stack below me. Martialing yard, stack, below me, I'm sorry.

#31: Yeah, the brick stack below and parallel long buildings. To what you perceived to be south of the stack.

#7: (Not audible)

PAUSE

~~SECRET~~

~~SECRET~~

#7: Its a whole batch of these. They're just long fabrication buildings. Metal.

PAUSE

#31: That will be Sketch 5, is it. Yeah (not audible).

PAUSE

#7: Five?

#31: Yeah, five for that.

PAUSE

Okay, now moving on to another jump. Another move to the East. Your impression at this touchdown was a little more sparse to the left. The only thing you had or I guess, things on posts, like a sub station, you said . .

#7: Yes. It reminded me of an electrical substation. Forward and below me somewhere. It kept coming and going.

#31: Also at this jump, you also had, or this touchdown, you also had associated with this point, what I interpreted, I think you said, garden spray column, more than one (not audible).

#7: I don't know what it was. I saw just against a gray background, white conical shapes that reminded me of the column spray out of a garden spray. You know that cone white sparkly spray. I saw, I think its three of them. Not in a row. They were horizontal. And, one in the foreground and one high and one kind of low behind it. I have no idea. I tried to shake it as just pure noise but it wouldn't go away. . . so I figured I'd dump it.

#31: Um hm. You also had apartment shapes to (not audible) South.

#7: To the South, yes. Looked like moderate high rise. Cement maybe.

#31: Okay. Substation (mumbling). Do I understand on these columns you - they are horizontal or vertical?

#7: What columns?

#31: This garden feeling of spray of conical shapes.

~~SECRET~~

~~SECRET~~

- #7: The cone shapes were horizontal with the apex to the left and getting bigger to the right.
- #31: Okay.
- #7: And they were just against a nothing background.
- #31: Okay.
- #7: And they appeared to sparkle or pulsate. They had slight movement to them. And looked for all the world like a garden spray to me.
- #31: Okay. Moving to our next jump, when I look at it, this should be our last touchdown.

PAUSE

Oh yeah, a fenced in area.

- #7: Large, large open area.
- #31: Starting off, I'll give it to remind you now because its, you know, it was a long session. Reminds you of inflatable plastic enclosure to the right. Its smooth.
- #7: Okay.
- #31: There are all kinds of things here, small buildings, piles of debris, the fenced in area with a kind of something that I did not pick up, I don't know what the word was that you used. Big fenced in area with kind of to the left.
- #7: I don't know I remember thinking it was a some kind of a... some kind of test facility.
- #31: Right, that's this session here. Or this section of it here. Would you . . .
- #7: Concrete pads or hard pads or stands or aprons, or . .
- #31: Right, going on through your notes or my notes, complex overlapping cone shapes. That's when you felt some kind of a test. Parallel linear pattern coming in from a great distance. Big area spread out. Concrete apron thing. Okay.

PAUSE

- #7: I don't remember the cone tings. I remember the linear.

~~SECRET~~

~~SECRET~~

#31: Complex with overlapping cone shapes - well, maybe
(Not audible-both talking at once)

#7: No . . . not remember where it was.

#31: Okay, that's fine. The, if I'd be interested in
the . . your feeling of the inflatable plastic
enclosure. Okay. In association with the large
fenced in area. Which you said was to the left, I
think, as far as I recall.

Okay.

PAUSE

#7: I thought it looked like a wall with a . . . plastic
inflatable roof on it. About the ratio of . . a little
wider than a loaf of bread, you know, long, ratted on
the ends, the top of it being less than a semi-sphere.
Much shallower than that. And it looked very smooth
. . . no indications of metal sheeting as a roof.
I just felt it was very smooth and which again is what
made me say like plastic. And I started to say like
the top of the Good Year blimp. Long and rounded like
the top of that. Except, I didn't think it was silver.
And I didn't say Good Year blimp because I was afraid
it would conjure up silver.

#31: Okay. Okay.

#7: That was over to the right and

PAUSE

There was little roads all over this cotton picking
place and I remember there's something about . . .
Oh yes, there's something about parallel linear
pattern. I took to mean, maybe railroad tracks
curving off down here. Back over to the left is
where I saw the shapes coming from a long, long
distance, it appeared and getting rather large here
in front of me. Like . . When I think of it, like
I was looking at the end or railroad rails and I
was very close to one end and the other end was just
getting smaller and smaller way away from me like
a wide angle lens. And, just like they went to
infinity, I remember.

PAUSE

~~SECRET~~

~~SECRET~~

- #7: I could barely . . . I was aware of a fence way off in the distance. . . which was the other side of this thing, I think. And it was, I would think several hundred acres in here.
- #31: Okay, what . . .
- #7: Like it had been. . all the vegetation had been aggravated - it just wasn't going to grow anymore.
- #31: What is the circular pattern that you have there in the left?
- #7: That was some kind of a pad that was raised a few feet off the ground.
- #31: Okay. Also associated with this point, we had big rounded tanks, vertical pipes, smaller tubes coming up and turning to what you perceived to be south.
- #7: Yes.
- #31: Emitting gas or steam high pressure with. . and you could tell that because it had a straight spreading linear pattern instead of (not audible).
- #7: Somewhere very close to this is little pipes that come up and they were three or four of them. They had a little nozzle on the end of them. They were - it was pressure coming from them. And they were to the right of this big tank here.
- #31: Okay.
- #7: I didn't know what to make of that. And it was, yeah, it was kind of high pressure (not audible) or spraying to the right.
- #31: Okay. Good.
- #7: Rather than just a lazy drift.
- #31: On the far side of the open area within this (not audible - both talking at once).
- #7: These were pipes or tubes or something. You know near this big tank like.
- #31: Very good. And . . click click click.

~~SECRET~~

~~SECRET~~

- #31: Several vertical tubes shapes in a row. Height being approximately $1\frac{1}{2}$ times their diameter.
- #7: Oh, yes, I had forgotten those. Those to the right were somewhere in the right of this thing. I'm not sure exactly position relative to the fence but . . . Did I say how big these things were?
- #31: No, you. . . the proportions were height $1\frac{1}{2}$ times diameter on my notes.
- #7: Uh huh.

PAUSE

There were several of them in a row and its like if you buried POL drums a third of their length into the ground, except these things I gathered were 15 or 20 feet across in diameter. Then they were off in the distance and kind of to the right.

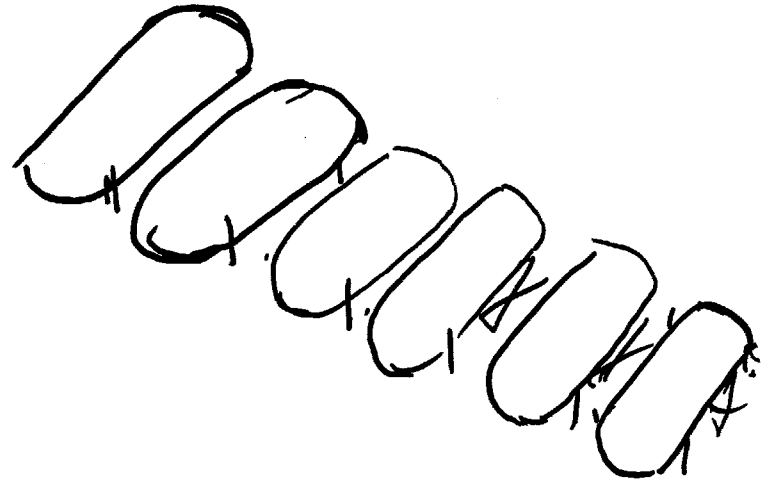
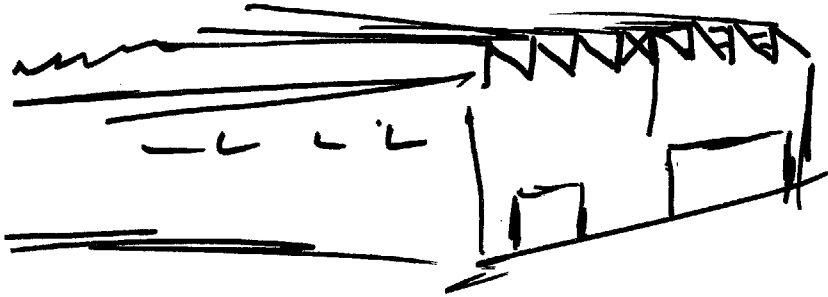
- #31: Okay. And your last or second, your last two things you may already have them on there. You had a railroad spur, loops or cable laid out on the ground. Is that what you're working on there?
- #7: Its this thing right here.
- #31: Okay.
- #7: There was more than one of those, I don't know how they were laid out relative to each other.
- #31: Okay.
- #7: But I saw them in there. But there was a lot of I guess trucks or something. . . . had been all over the place and just beat the hell out of the landscape. Pretty baren.
- #31: And just when you were asked if there was anything to add, this side of the fence a short puff of smoke from a building.
- #7: Yes.
- #31: Oh, okay, in the very foreground.
- #7: Down. . . Down in this area here I could . . . and that was from a different angle so that's not going to work out. But I saw the end of two buildings and there was a . . . My gosh, I'm sure getting a lot of these conical shapes, aren't I?

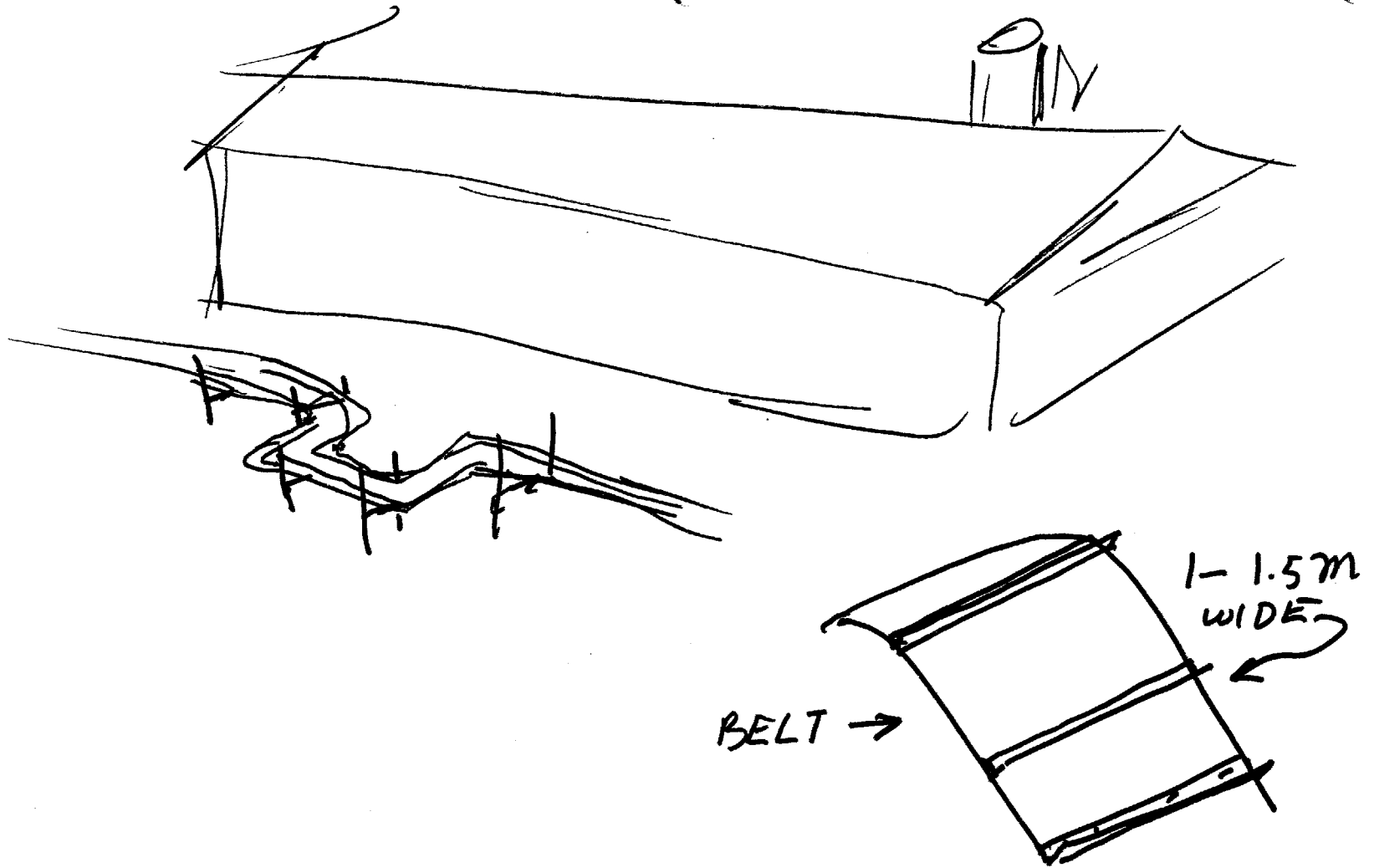
~~SECRET~~

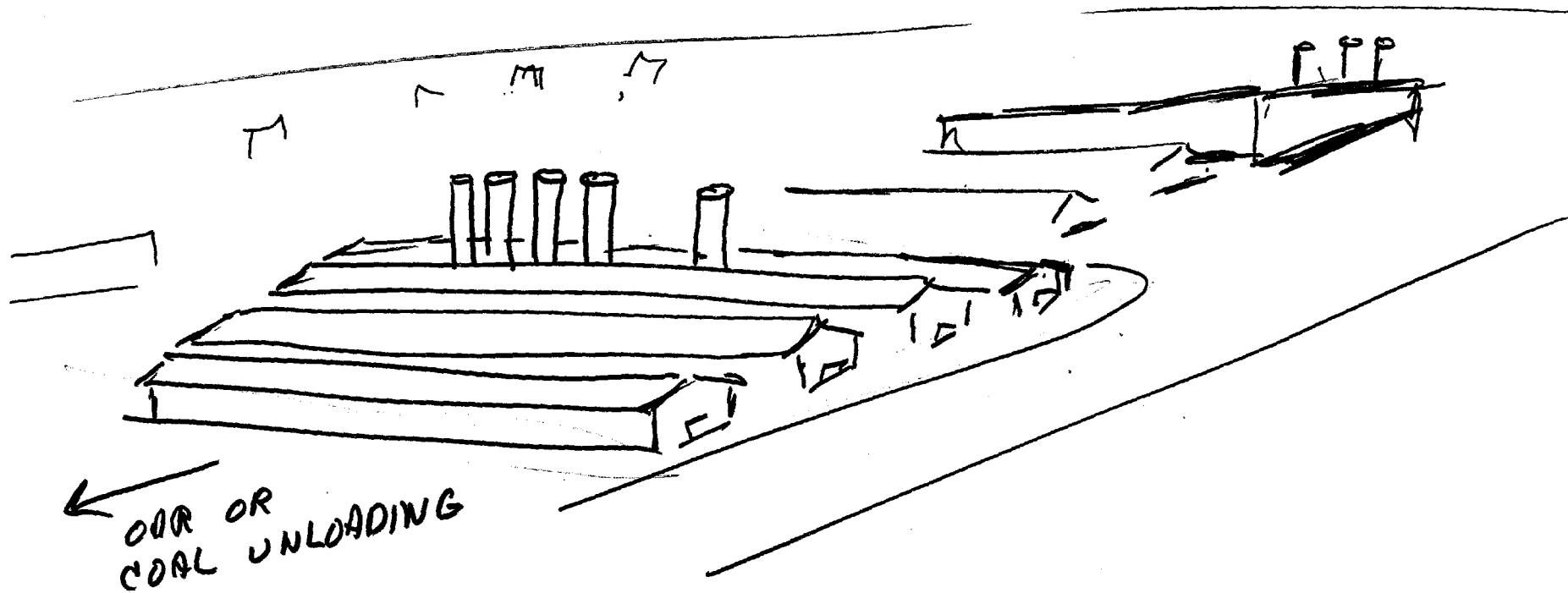
~~SECRET~~

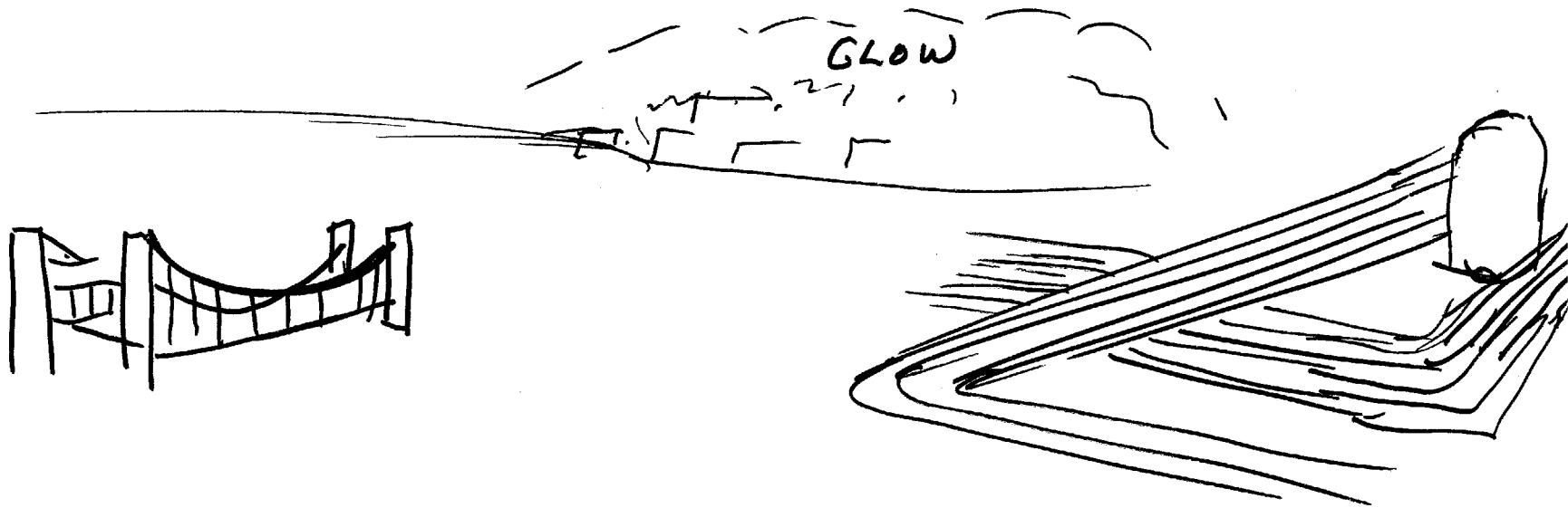
- #7: Coming out of this building was just a big burst of flame and it just quit. You know, just . .
- #31: Okay. I wasn't sure which side of the . . . which where in relation to the fence.
- #7: I thought it was below me and I thought it was this side of the fence. I had drifted over - I don't know. I have no idea.
- #31: Okay.
- #7: That was it, wasn't it.
- #31: Uh, right. That's . . that's the extent of my notes through the session. Have you . . . Well, have you any comments to make or any feel or flavor or anything you'd like to add to this (not audible)?
- #7: This whole thing looked so fractured, I don't see how you can get anything out of it. I didn't have time to look at any of them and make sense out of any of them. I get the perspective - if you can make heads or tails out of them I feel real good about it, but not to me.
- #31: Well, I certainly think I can. How did you feel about your session?
- #7: I felt like I was very deep.
- #31: Okay. I was curious. I have a note here. No sooner than he started to talk it seemed then the people at the other end of the airconditioning duct fired up their drill and . .
- #7: I didn't hear them.
- #31: That's good. Well fine. I don't have any more. Thank you very much.

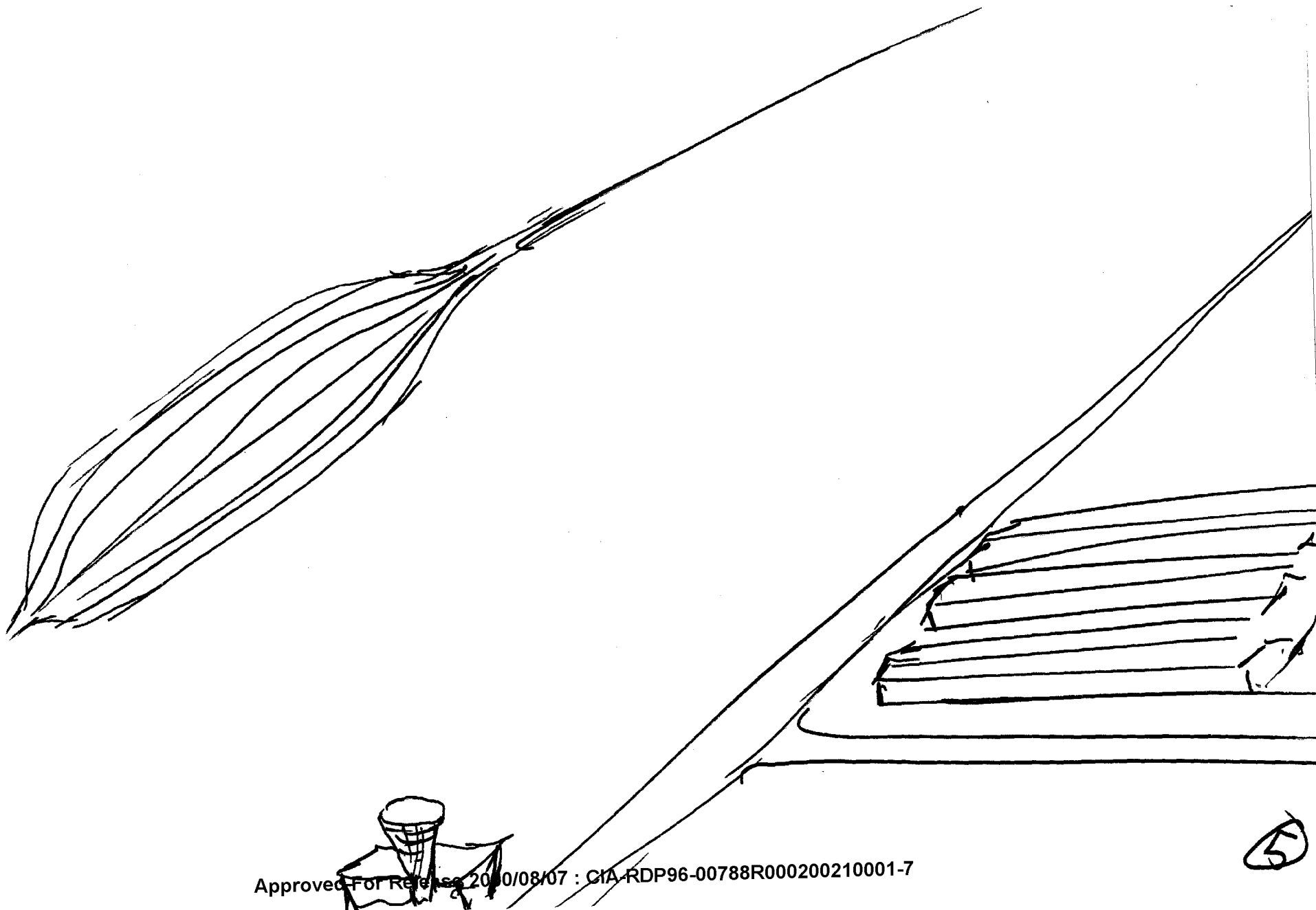
~~SECRET~~











(5)

