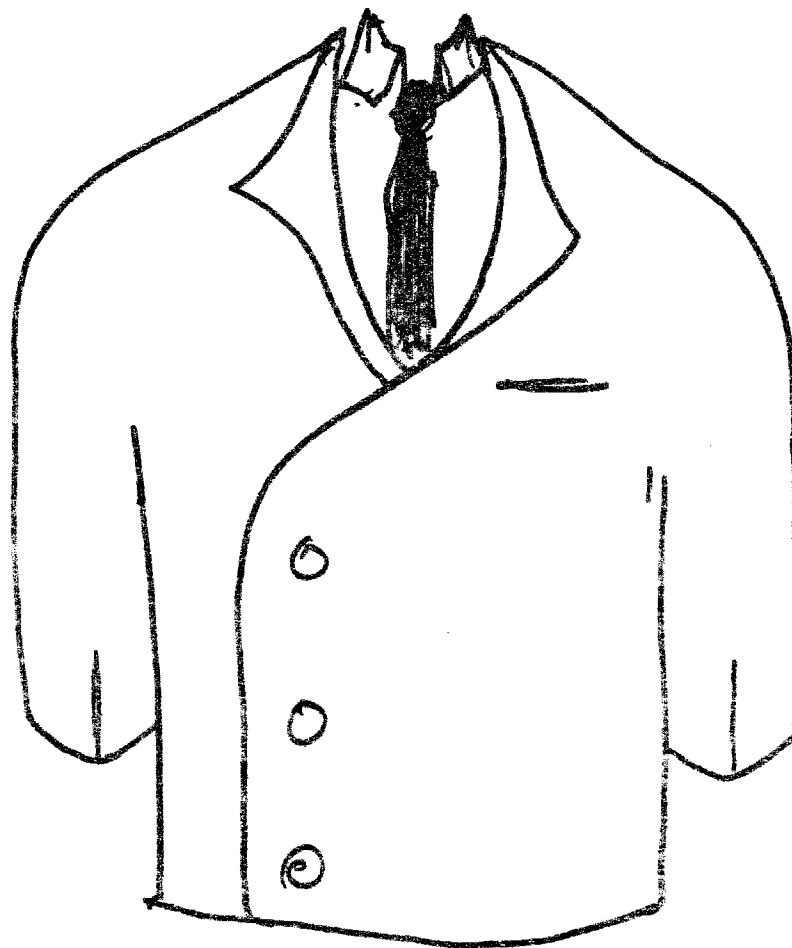


HAT IS MATCHING GREEN
BUT HAS ^{DARK} RED STRIPE AROUND
HAT BAND



Funny
green
double
breasted
tunic/jacket
AND MATCHING
GREEN PANTS.

BRIGHT GREEN LIKE
IRISH KELLEY GREEN -
NOT A NATURAL
FOREST/EARTH TYPE
COLOR.

IT IS AN OFFICE WORK
UNIFORM LIKE ARMY
GREENS. HE HAD HIS
JACKET'S HAT OFF,
SLEEVES ROLLED UP, NO
TIE ON SHIRT

This document is made available through the declassification efforts
and research of John Greenewald, Jr., creator of:

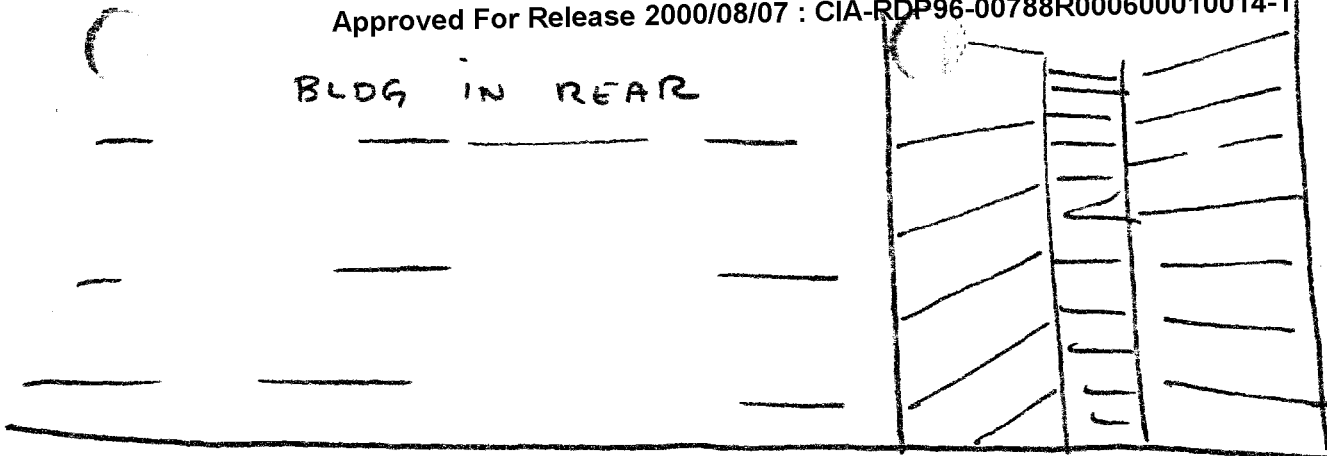
The Black Vault



The Black Vault is the largest online Freedom of Information Act (FOIA)
document clearinghouse in the world. The research efforts here are
responsible for the declassification of hundreds of thousands of pages
released by the U.S. Government & Military.

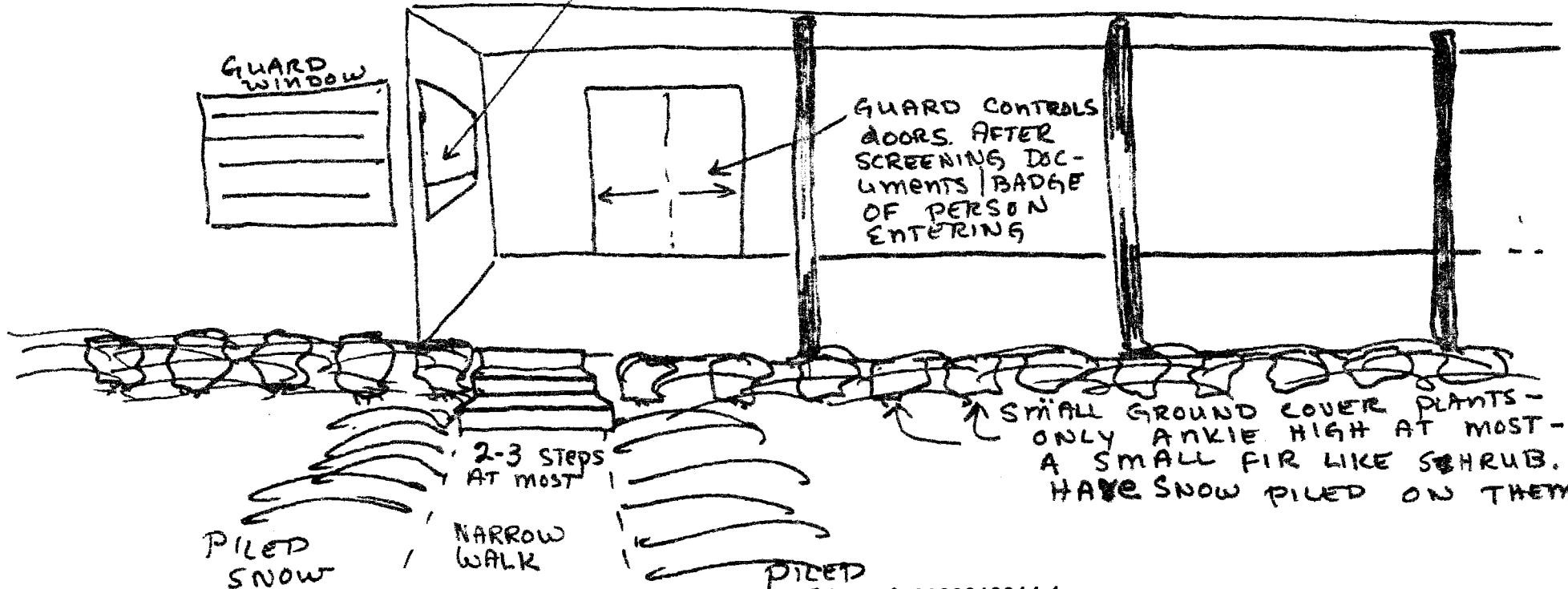
Discover the Truth at: <http://www.theblackvault.com>

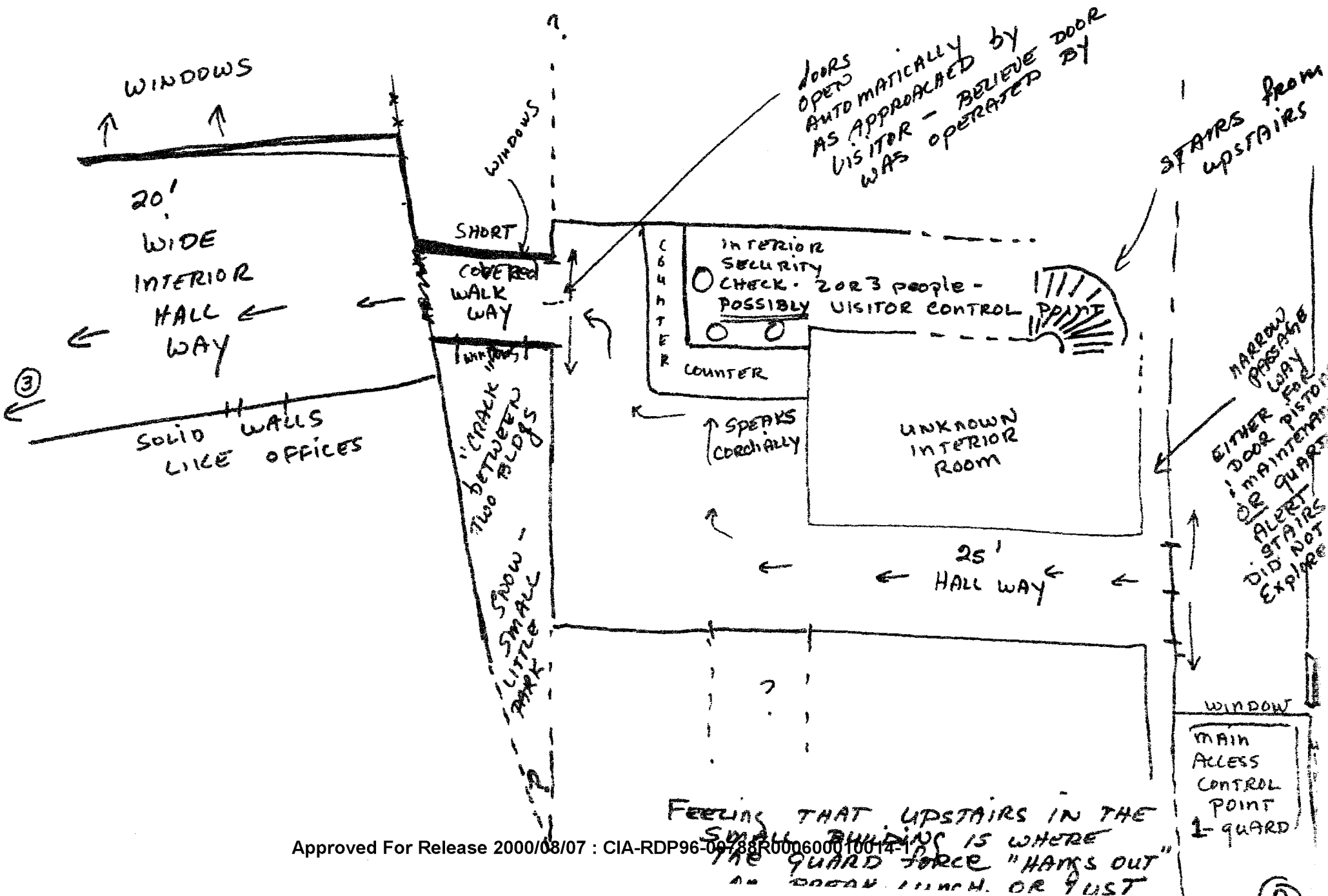
BLDG IN REAR

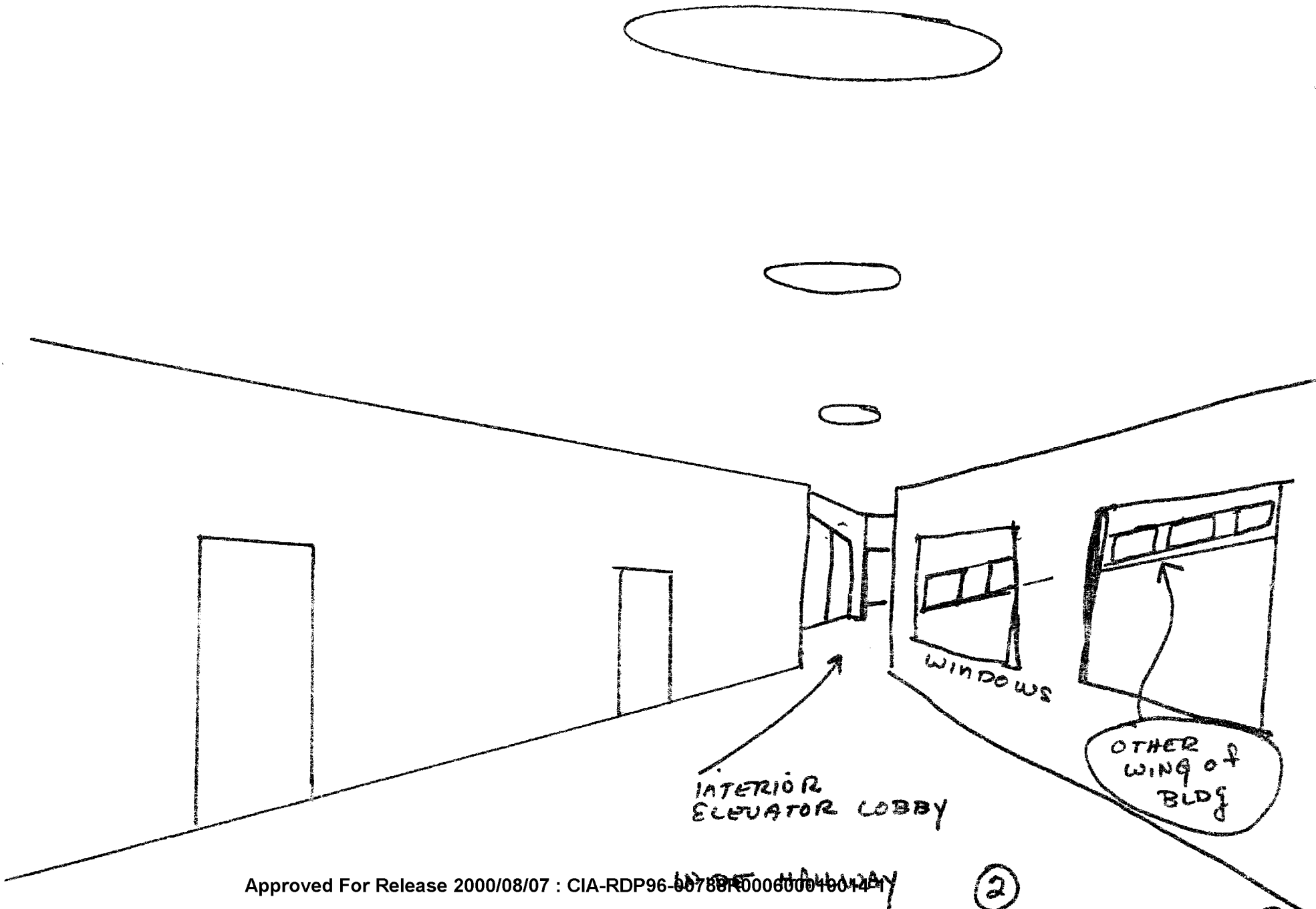


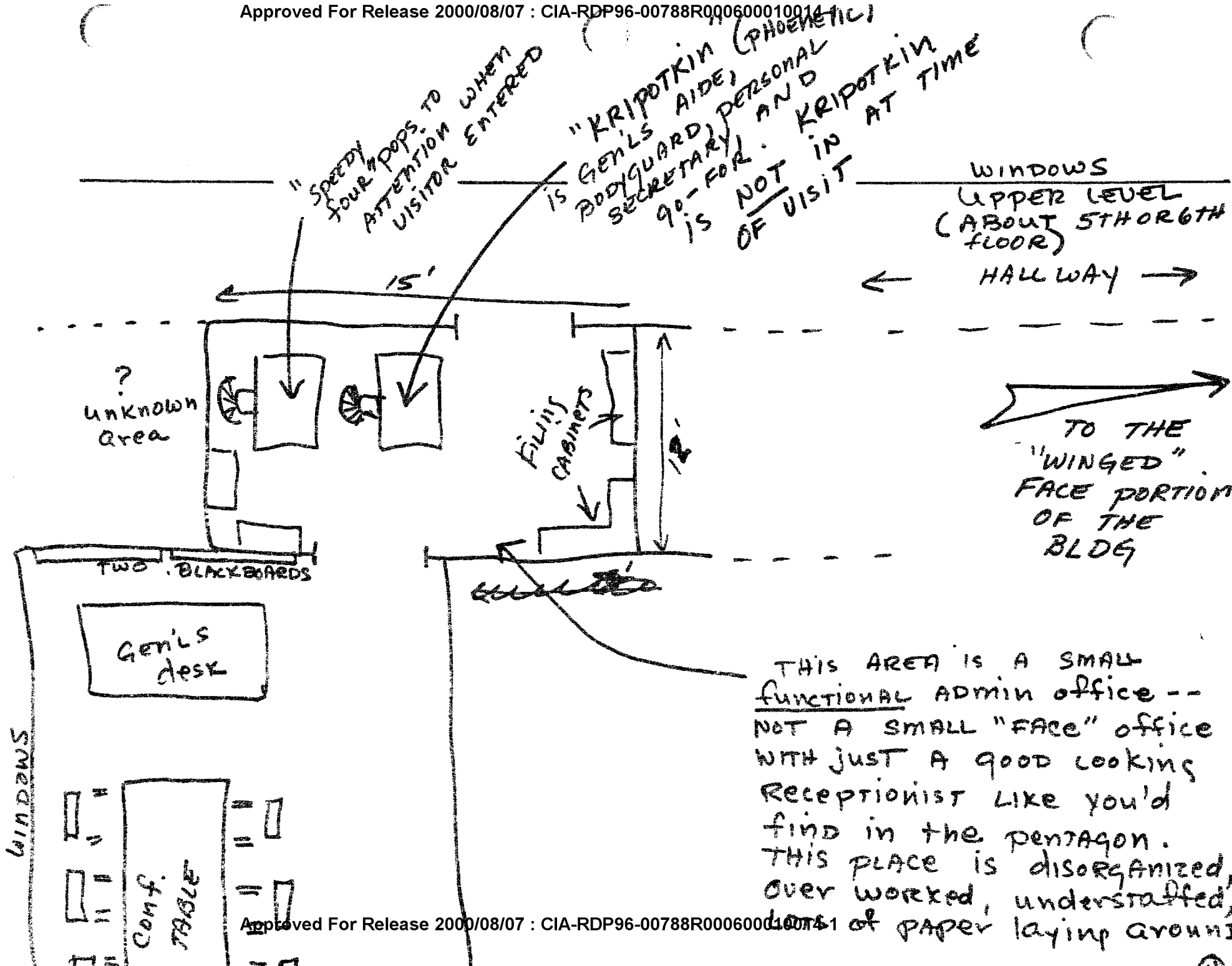
BLDG IN FRONT

CLEAR
LIKE BANK TELLER WINDOW HEAVY GLASS DOWN TO 4"-6"
FROM BOTTOM









WINDOWS
 UPPER LEVEL
 (ABOUT 5TH OR 6TH FLOOR)
 ← HALLWAY →

TO THE
 "WINGED"
 FACE PORTION
 OF THE
 BLDG

THIS AREA IS A SMALL
FUNCTIONAL ADMIN OFFICE --
 NOT A SMALL "FACE" OFFICE
 WITH JUST A GOOD LOOKING
 RECEPTIONIST LIKE YOU'D
 FIND IN THE PENTAGON.
 THIS PLACE IS DISORGANIZED,
 OVERWORKED, UNDERSTAFFED,
 LOTS OF PAPER LAYING AROUND