

~~SECRET~~

INSCOM
GRILL FLAME
PROGRAM

SESSION REPORT

CLASSIFIED BY:MSG,DAMI-ISH
DATED:051630ZJUL78
REVIEW ON: Feb 2001

NOT RELEASED TO FOREIGN NATIONALS

~~SECRET~~
SECRET

This document is made available through the declassification efforts
and research of John Greenewald, Jr., creator of:

The Black Vault



The Black Vault is the largest online Freedom of Information Act (FOIA)
document clearinghouse in the world. The research efforts here are
responsible for the declassification of hundreds of thousands of pages
released by the U.S. Government & Military.

Discover the Truth at: <http://www.theblackvault.com>

~~SECRET~~

SUMMARY ANALYSIS

REMOTE VIEWING SESSION 858

1. (S/NOFORN) This report documents a remote viewing session conducted for training purposes only.
2. (S/NOFORN) Post session analysis of the target viewing revealed little or no correlation. The viewer was disappointed, but realized what his problems were. The viewer suffered a great deal of stress during the hours prior to the session. He complained of a sinus headache during cool-down, during the session and during the drawing phase. He also appeared to be hyperactive during the entire period. Training goals (RH TGT descriptors) were not adequately achieved.
3. (S/NOFORN) The protocol used for this session is detailed in the document Standard Remote-Viewing Protocol (local target) by Harold E. Puthoff and Russel Targ, November 1978.
4. (S/NOFORN) Following is a transcript of the viewer's impressions during the remote viewing session. At TAB A are drawings made by the remote viewer reference his impressions of the target site. At TAB B are photographs of the actual target site.

NOT RELEASABLE TO FOREIGN NATIONALS

~~SECRET~~

~~SECRET~~

TRANSCRIPT

REMOTE VIEWING SESSION 858

#66: This will be a remote viewing session for 1430 hours, 9 February 1982.

PAUSE

Focus your attention now, focus your attention solely and completely on today's target. Picture in your mind #63's face and #01's face and explore the target with them as they are doing now. Concentrate and describe the target to me.

PAUSE

#25: Have a long, thin parking lot. Seems like an outside toilet and pissed 'cause they're outside.

#66: Don't talk to me. Just describe the target.

#25: Getting an impression of a roof, wood, 2 by 4 construction. Upside.... down on a V shape ...asphalt shingles. Think that's just a cover house, not a building. It's like a...just a roof out there.

#66: Describe your perspective view. Describe where you are.

#25: Looking ahead, feeling northwest,

#66: Describe #63's location.

#25: He's underneath it. But, underneath it's open ...ceilings just..open beams.

#66: Describe the activity at the target.

#25: I'm not getting much. Thought I sensed a car going by fast, but I'm not getting any activity of people. Saw a woman's face, vague, vague. I can't bring her back...getting glimpses of it. She's got her hair pulled back tight from her face.

~~SECRET~~

~~SECRET~~

- #66: Describe #01's activity.
- #25: He's just standing around it. It, one of the supports for the roof...this palm of his hand...
- #66: Describe the surface on which #01 is standing.
- PAUSE
- #25: It's a concrete base....something soft over it. ...softer than concrete, there's a little cushion. Just saw a straight, white blind. I don't know what that means.
- #66: Describe #63's activity.
- #25: Well, I get the impression #63 is leaning on a post. One of 'em got something to eat, I think. Eat or drink. It's like a concession stand. Keep wanting to put him in a ball field. May be boards half way up this thing. They go..... up and down instead of lying horizontal.
- #66: They go up and down.
- #25: Yeah. I mean they (mumble) one ends on the groundone ends up vertical.
- #66: That's fine. Don't talk to me and get involved in that. All you have to do is describe. Now, #01 has a message for you. Describe the message to me.
- #25: Get me out of here. That's what he's saying. That's not the message though. I think he's forgotten the message. All he's concerned with is leaving there now. It's dumb to be where they are.
- #66: Describe the imagery which leads you to that statement. Describe.
- #25: They're outside in the rain. It's cold. There's no reason for them to be there. Nobody else is there.....See a stop light.
- #66: Okay. I have no further questions about the target.
- #25: Let me get that message from #01.....

~~SECRET~~

~~SECRET~~

#25: The message doesn't mean anything. I don't know what the message is, but it has no relevant.....don't mean anything to anybody.to me anyway.....just sort of wishing me well, or.....

#66: Remember everything you have perceived in its complete detail. You may prepare now to draw your perceptions of the target.

~~SECRET~~

~~SECRET~~

REMOTE VIEWING SESSION 858

(DRAWING NARRATIVE)

#25: Okay. I'll describe drawing 1. Drawing 1 is the first impression. Inside the curly line is to sort of depict how much of the image I saw and how it was just sort of suspended in space. Like looking through a cloud with a hole in it. I didn't see anything on the other side of the..... on the outside of the squiggly circle or squiggly square shape, like in the drawing. This V shape was just this way made out of wood 2 by 4s and I believe that it was part of a roof, but that came right away, later. The first impression was of the, but it was...well, it was almost at the same time that I felt like it was a roof. So, I've drawn a line off diagonally here to show that it was connected to something. I believe it could be a roof.

Drawing 2 is what that figure became, the 2 by 4s and the V are shown in drawing 2, labeled 2 by 4. The ceiling, roof is made of asphalt tiles. Inside of the ceiling was board with beam construction in there. I'll draw a little extra lines to make it look like beams. They were sitting on some sort of support, I believe it was wood, 4 by 4 size roughly. You got through there, you got something to eat there, I think. The sides that I've drawn and I see that my drawing is not in perspective at all, that it's been screwed up in proportion. The back looks wider than the front in the drawing. I don't know why. I think that's just my lousy drawing. The wood sides went up vertically instead of horizontally like you would normally see wood, buildings laid. The floor was concrete. I believe with a soft cover I've written down here. And, I have had to fight off the temptation to say that it was soft concrete. I drew in these steps, but I don't recall seeing those steps in the session. But, for some reason they were necessary in the drawing part. This may be connected to something over in the direction of a hill here. Connected to something.

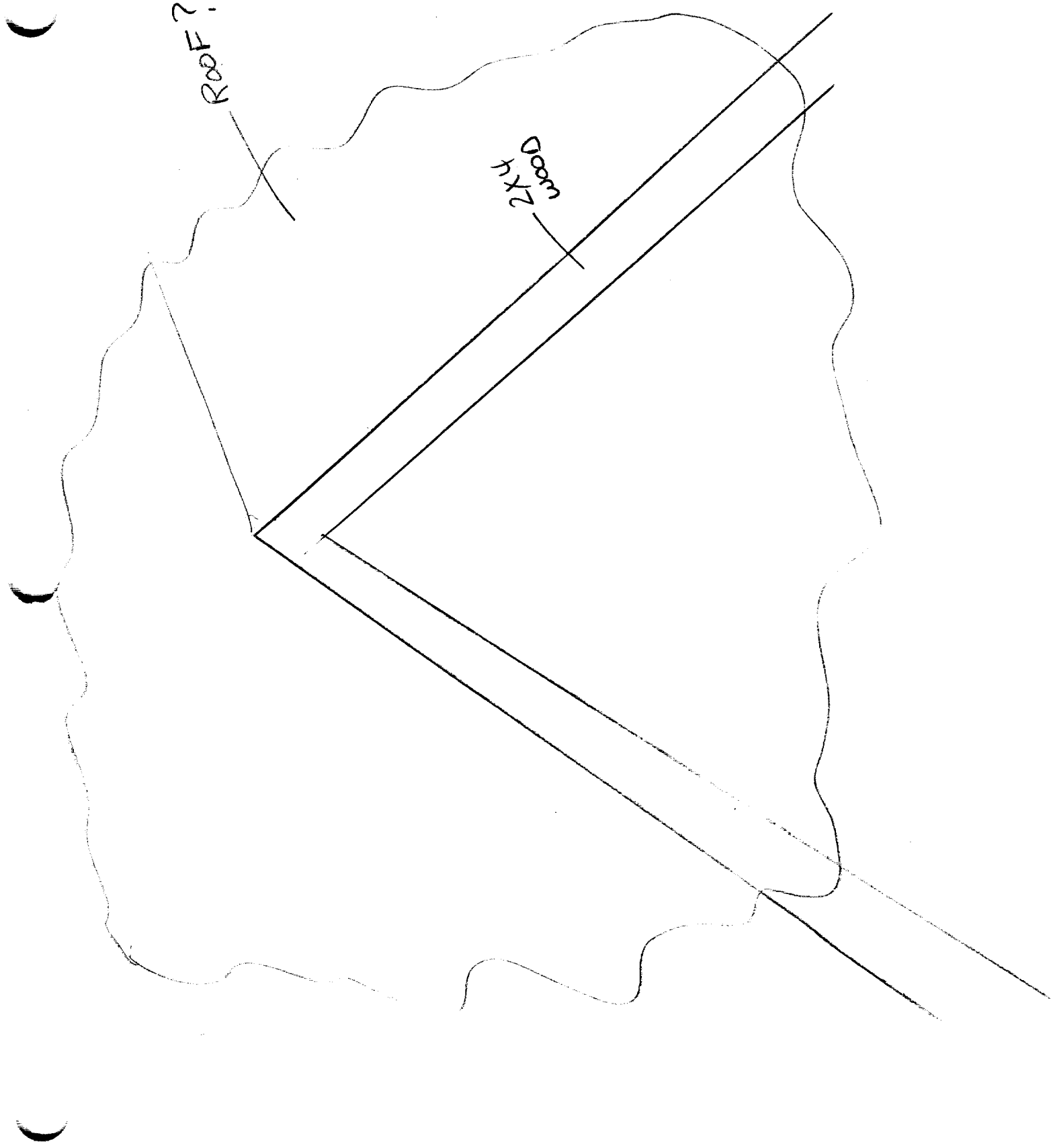
#66: Okay. This little drawing that you've made of something here on 2 you feel is connected to something else?

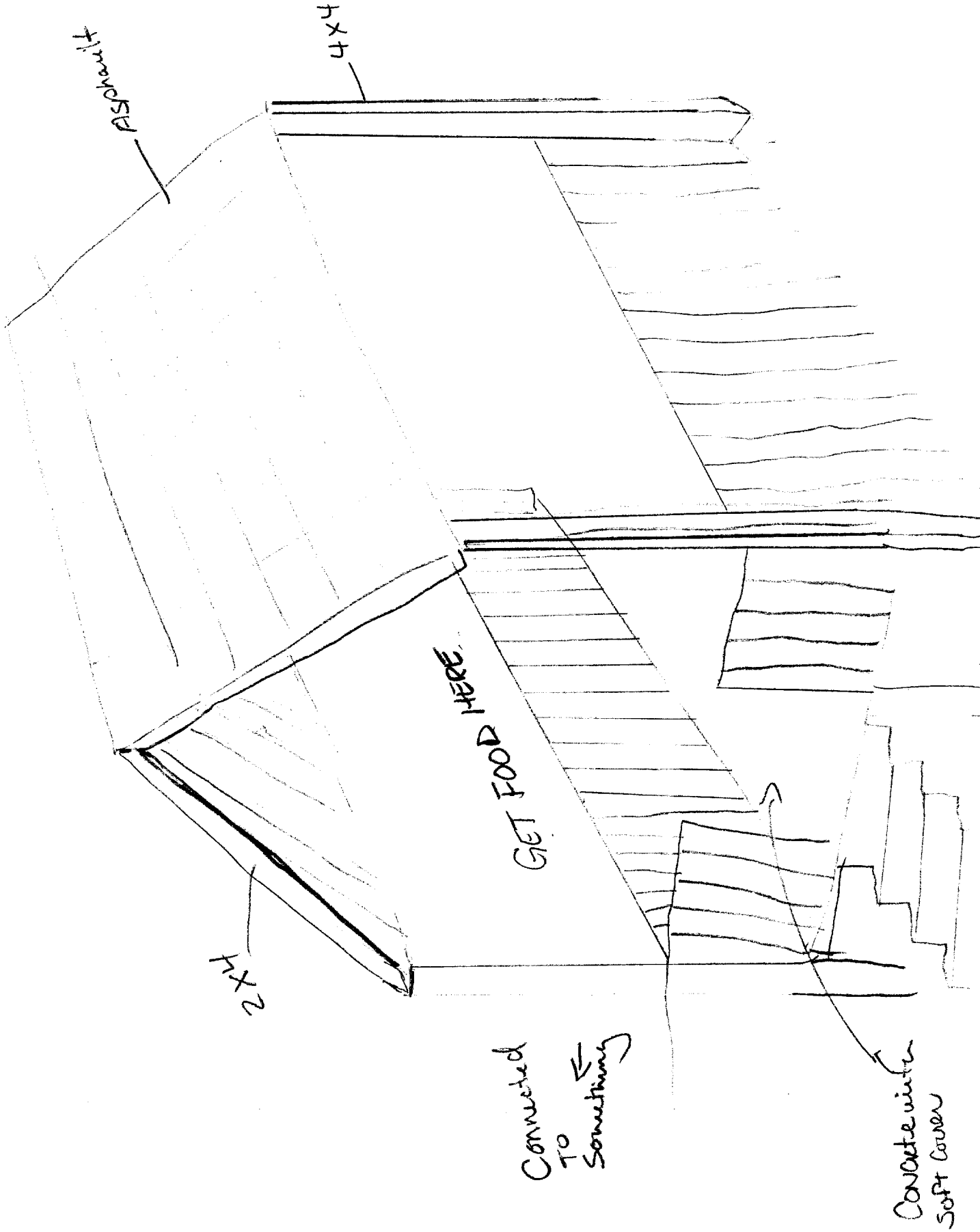
~~SECRET~~

~~SECRET~~

- #25: Yeah. Because you just wouldn't buy food in space there. That's the only reason I think it's connected to something. That may be analysis in overlay. Anything else on this drawing?
- #66: No. I'd like to know.....
- #25: I'd like to put my direction down here. Okay. The direction from here, I believe the target was southwest. I have no idea on distance.
- #66: Now, you said before the session that you had a headache that was bothering you. Did that continue through the session?
- #25: Parts that came and went during the session, but it didn't seem to be a major point. All I had to do was say I didn't want it, and it went away.
- #66: And, from the standpoint of confidence, how do you feel about your performance in this session?
- #25: Well, I don't know. I think that I might be right on the thing with food. That somehow this target is connected with food somehow. But, that may be it. I don't know.
- #66: I want to identify with your emotionality about this food thing. What is it that tells you that you think that it does have something to do with food?
- #25: It seemed to me, when you asked me about what #63 was doing or something like that, I got the impression that he or #01 was considering food. It seemed like a hot dog, but I don't know why in the world they would eat a hot dog right after lunch. Both of them just had lunch.
- #66: Okay. Anything else you would like to add then?
- #25: Nope.

~~SECRET~~





TAB

