

COORDINATE REMOTE VIEWING TRAINING (CRVT)

CRVT Report: 940

DATE/TIME CONDUCTED: 211505 Oct 82

SOURCE #: 63

FILE #: 14

SITE: Chihuahua Mountains

EVALUATION: Valid S-2's

This document is made available through the declassification efforts  
and research of John Greenewald, Jr., creator of:

# The Black Vault



The Black Vault is the largest online Freedom of Information Act (FOIA)  
document clearinghouse in the world. The research efforts here are  
responsible for the declassification of hundreds of thousands of pages  
released by the U.S. Government & Military.

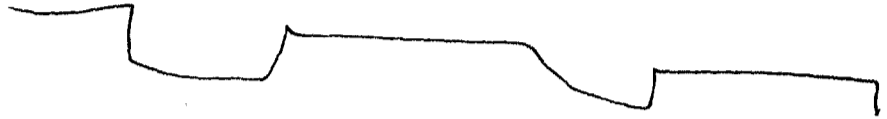
**Discover the Truth** at: <http://www.theblackvault.com>

210482  
1504

28° 5' 30" N  
108° 0' 0" W

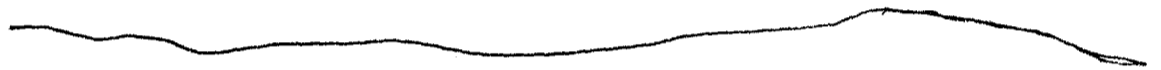
\_\_\_\_\_ M Beach

28° 5' 30" N  
108° 0' 0" W



A rip downs  
B land

28° 5' 30" N  
108° 0' 0" W



M Beach

28° 5' 30" N  
108° 0' 0" W



A solid  
B land c  
5-2 High c  
Bown c  
dry c

White CFB

Rust Color CFB

28° 5' 30" W  
108° 0' 0" W



A down across up

B valley c

s-z dy c

Crust c

Brown P

Ridge c

lower future c

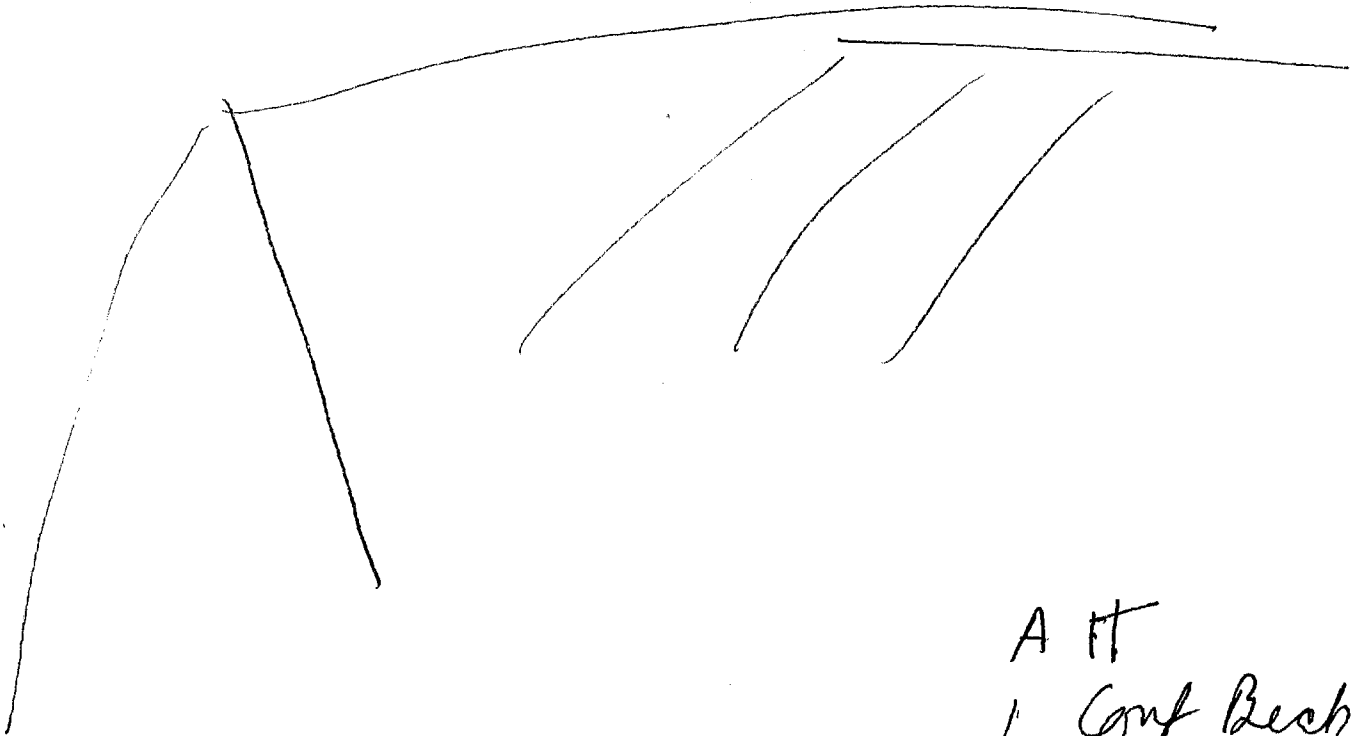
large deep valley c

sparse veg. c

AI Break

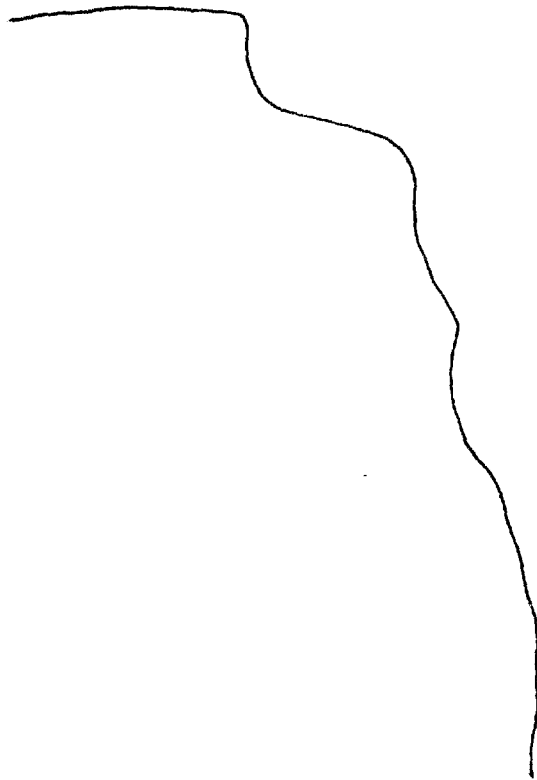
Conf Break

28° 5'



A ft  
/ Conf Beck

28° 5' 30" N  
108° 0' 0" W



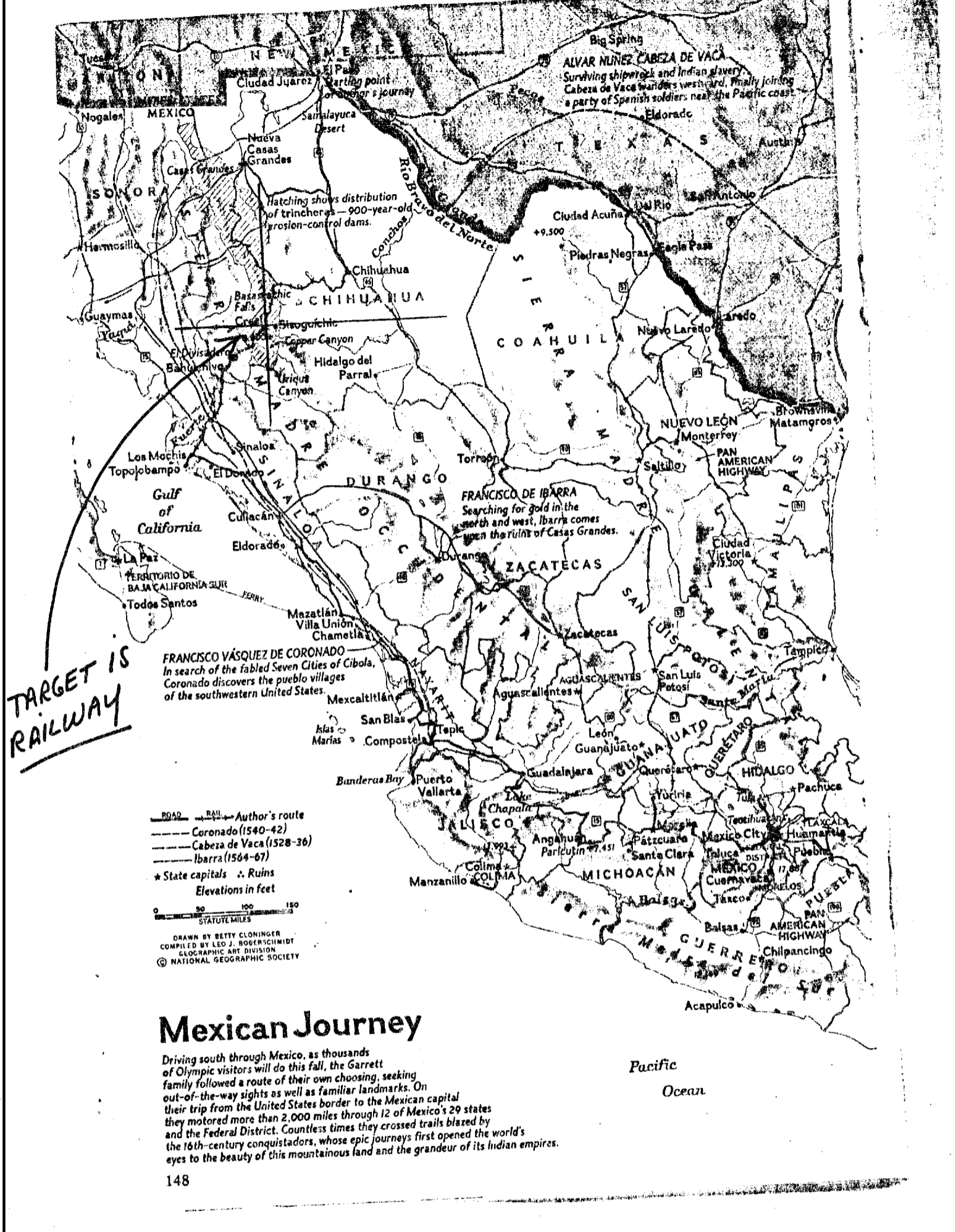
A steep vent  
B Ridge

S-2  
rough  
rocky  
Brown  
dry  
grainy

cool PC  
Wishing Souda  
streamed CBS

Aol Beab  
Grand Canyon

End

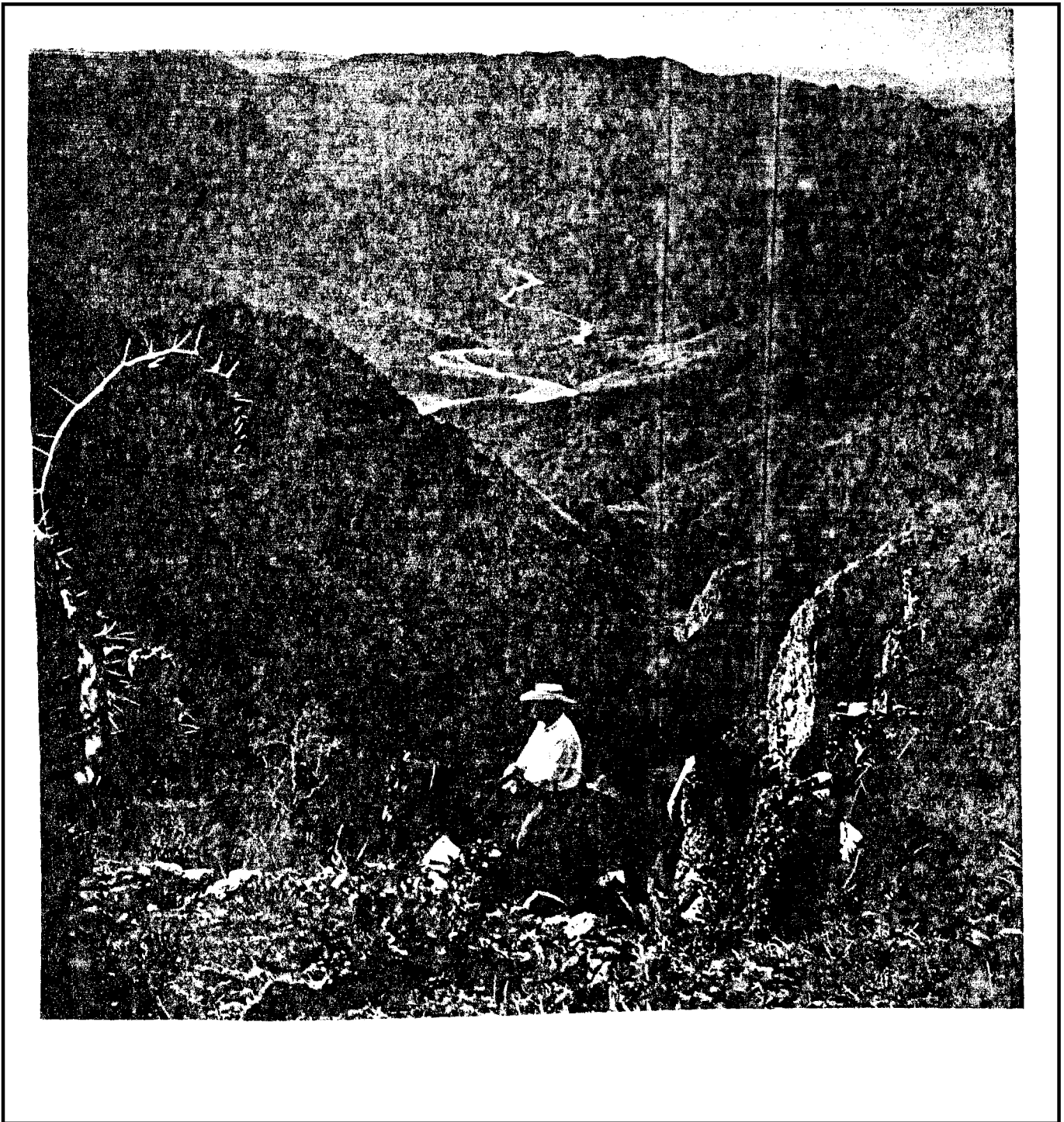


## Mexican Journey

Driving south through Mexico, as thousands of Olympic visitors will do this fall, the Garrett family followed a route of their own choosing, seeking out-of-the-way sights as well as familiar landmarks. On their trip from the United States border to the Mexican capital they motored more than 2,000 miles through 12 of Mexico's 29 states and the Federal District. Countless times they crossed trails blazed by the 16th-century conquistadors, whose epic journeys first opened the world's eyes to the beauty of this mountainous land and the grandeur of its Indian empires.

CPYRGHT

CPYRGHT







In Chihuahua we made plans to journey to Los Mochis near the Gulf of California. Even today the trip is impossible by car, for the great mountain spine known as the Sierra Madre Occidental and the Tarahumara Range, with its giant canyons (preceding pages), block access. The latter plunge deeper and four times longer than the Grand Canyon.

Until 1961, the only way across was by mule. Then the Chihuahua al Pacifico railroad, pushing track 420 miles through 89 tunnels and over 31 bridges, finished its line from the city of Chihuahua to the Gulf of California. It was the first road of any kind across Mexico's rugged Sierra Madre between the United States border and Durango, 674 miles to the south (map, page 148).



CPYRGHT

Scale 1:117,000 600 1 inch = 189 Statute Miles

Statute Miles 0 50 100 150 200 250  
Kilometers 0 50 100 150 200



CPYRIGHT