

COORDINATE REMOTE VIEWING TRAINING (CRVT)

CRVT Report: 944

DATE/TIME CONDUCTED: 221533 Oct82

SOURCE #: 25

FILE #: 12

SITE: Mystic Seaport Connecticut

EVALUATION: No valid S1
 No valid S2
 No site signal

This document is made available through the declassification efforts
and research of John Greenewald, Jr., creator of:

The Black Vault



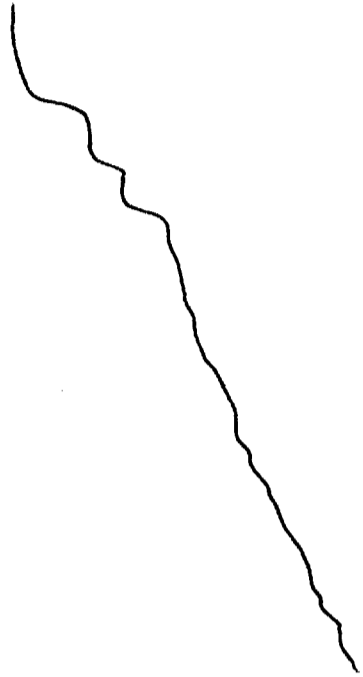
The Black Vault is the largest online Freedom of Information Act (FOIA)
document clearinghouse in the world. The research efforts here are
responsible for the declassification of hundreds of thousands of pages
released by the U.S. Government & Military.

Discover the Truth at: <http://www.theblackvault.com>

ROB
22 Oct 82
15:33

41° 21' 30" N

71



A. DOWN/WAVY

B. —

41° 21'

S-2 steep.

structure

ROB
22 OCT 82
1535

41° 21' 30" N

71° 58' W 

A. WAVY
B. WATER (C)

41° 21' 30" N

71° 58' W 

A. SOLID
B. LAND

A. WATER

AOL BREAK
BEACH SCIENCES
LAND WATER
INTERFACE (C)

ROB
22 Oct 82

41° 21' 30" N

71° 58' W

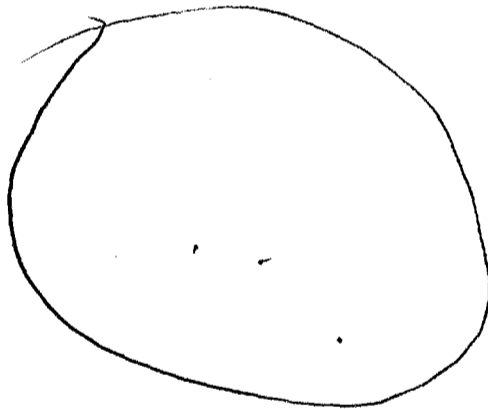


(M)

CONF BREAK
Structure
Problem.

41° 21' 30" N

71° 58' W



A. WATER

S-2 SALT

HOT

SUNLIGHT

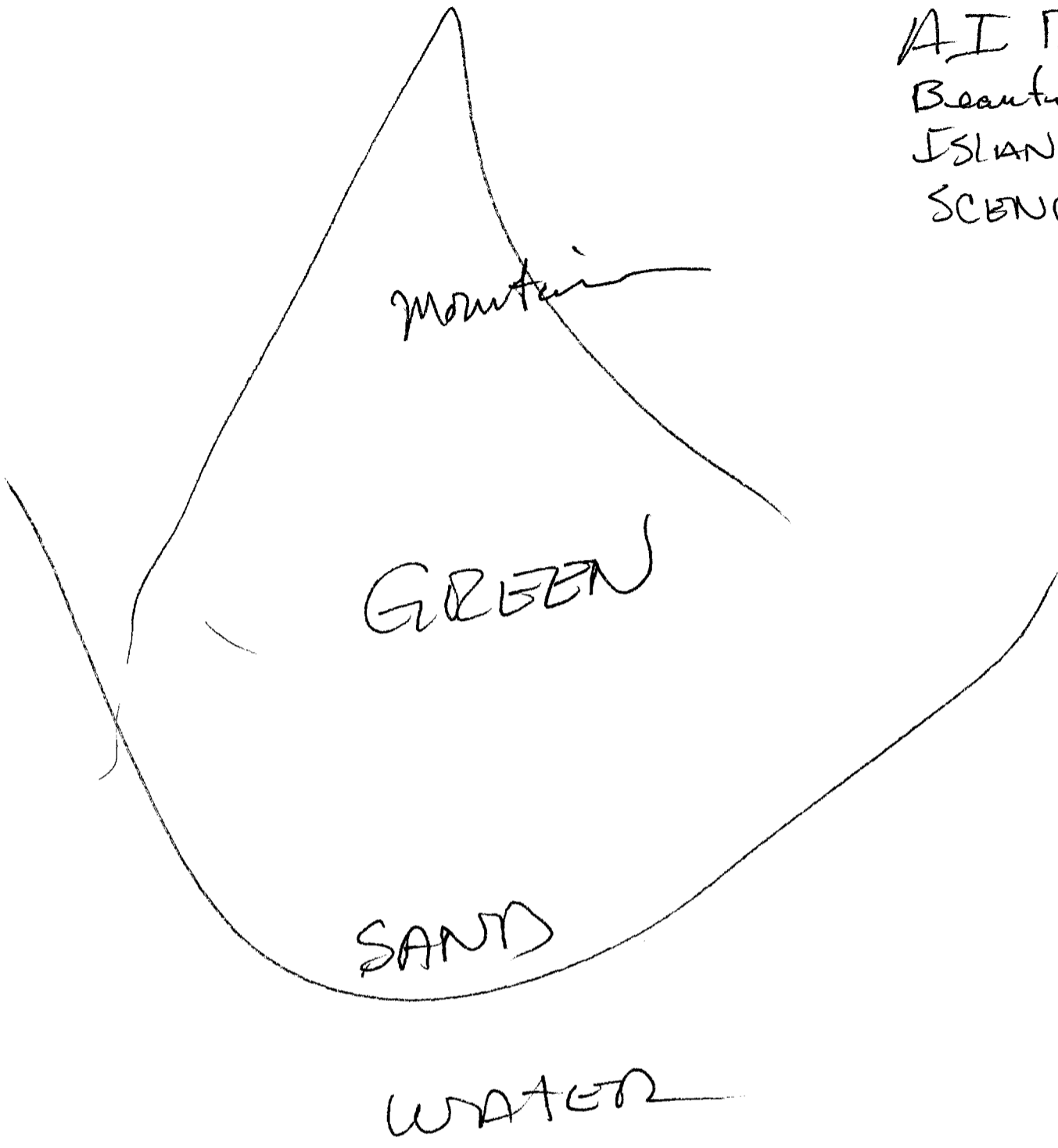
A. SOLID

B. SAND

S-2 GREEN C

(N) AOL BREAK ISLANDS

AI BREAK
Beautiful
ISLAND
SCENE



ROV3
22 Oct 82
Resume 15:45

u

41° 21' 30" N

71° 58" W

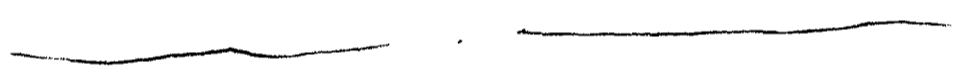


A.

CONF BREAK
WONDER
Because of failure
to properly interpret.

41° 21' 30" N

71° 58' W



A. FIAT
B. LAND

A. FLAT
B. LAND

A. WATER
B. —

AOL BREAK SCENES
OF RIVER.

ROB

41° 21' 30" N

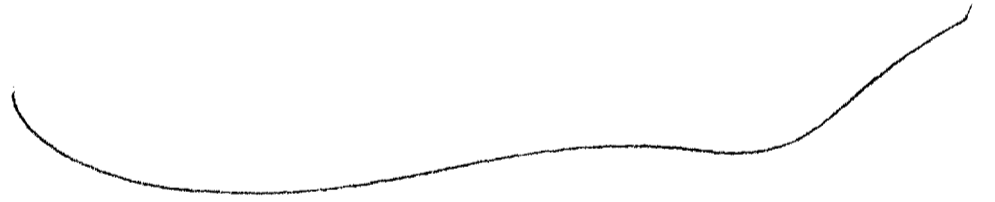
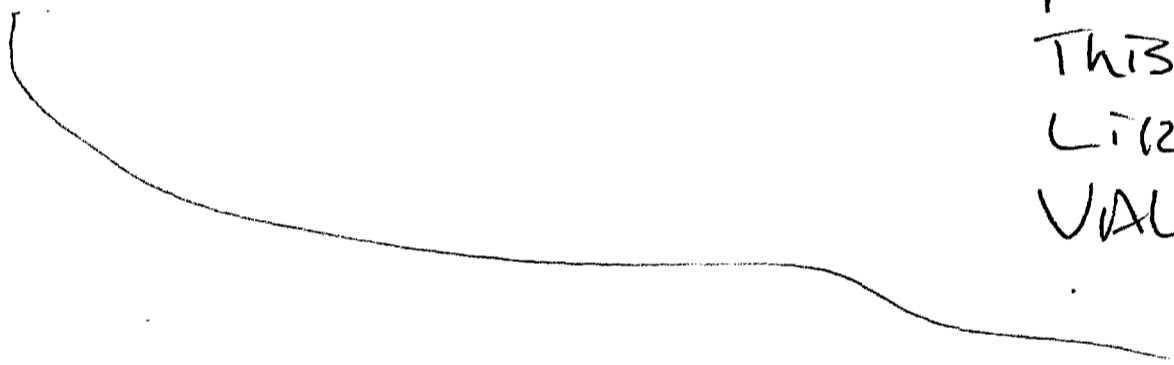
71° 58'



A. Down
ACROSS
UP.

B. V.

AOL
THIS LOOKS
LIKE A
VALLEY.



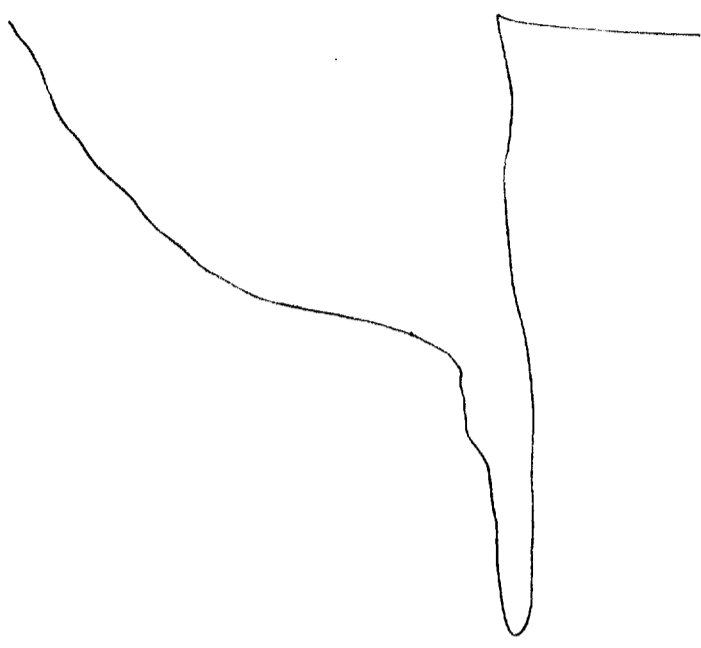
GREEN RIVER
VALLEY
AOL BREAK

ROB

22 Oct 82

41° 21' 30" N

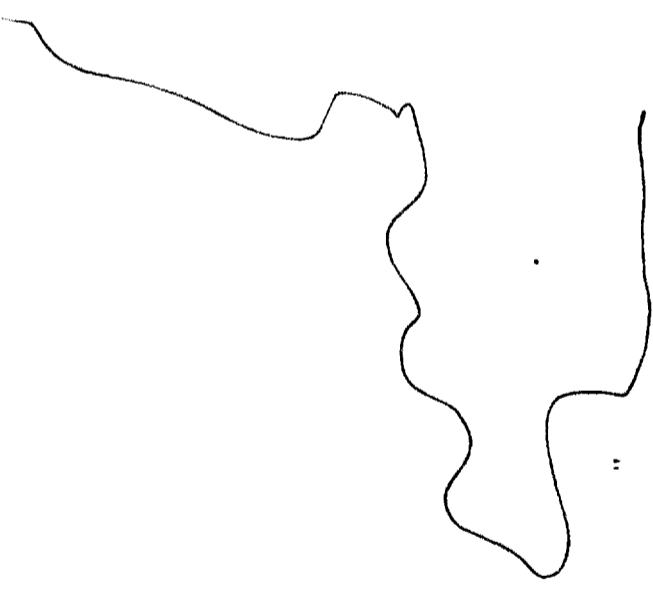
71° 58' W



A.
IM
BREAK

41° 21' 30" N

71° 58' W



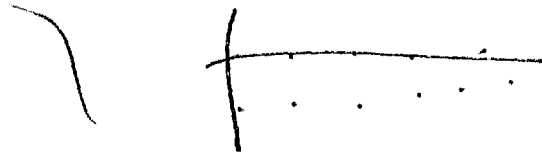
A. LAND
B. —
A. WATER
B. —

AOL BREAK
SCENES OF FLORIDA
FROM AIR
BREAK.

ROB
22 OCT 82

41° 21" 30N

71° 58"



A. ANGULAR
B. Structures

AOL BREAK
SCENES OF
Small town
Residential
STREETS.

END.

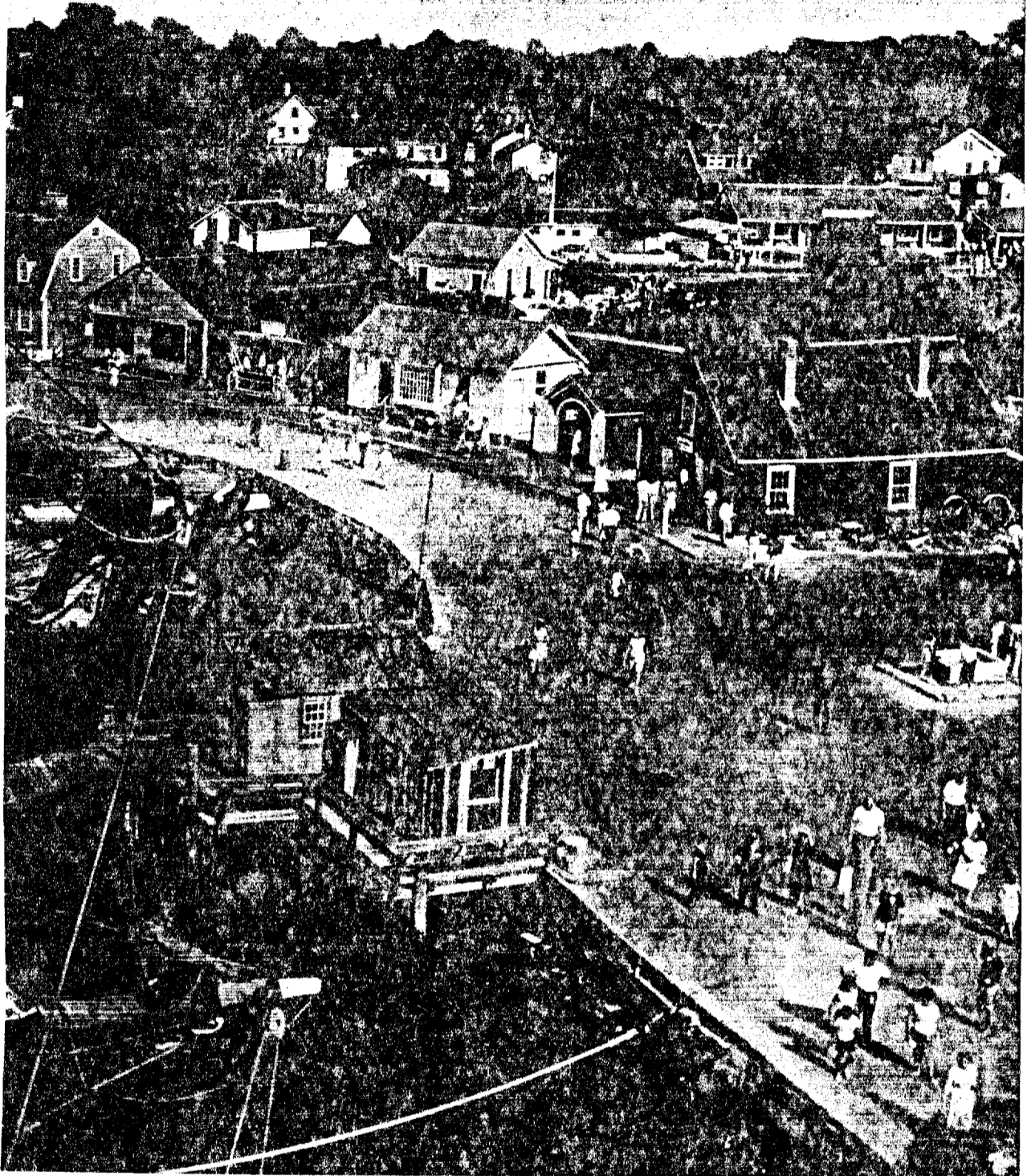
Sail Lives On at Mystic

By ALAN VILLIERS

Photographs by WESTON KEMP

Aloft in the square-rigger *Joseph Conrad*, youngsters relive the rugged days of old.

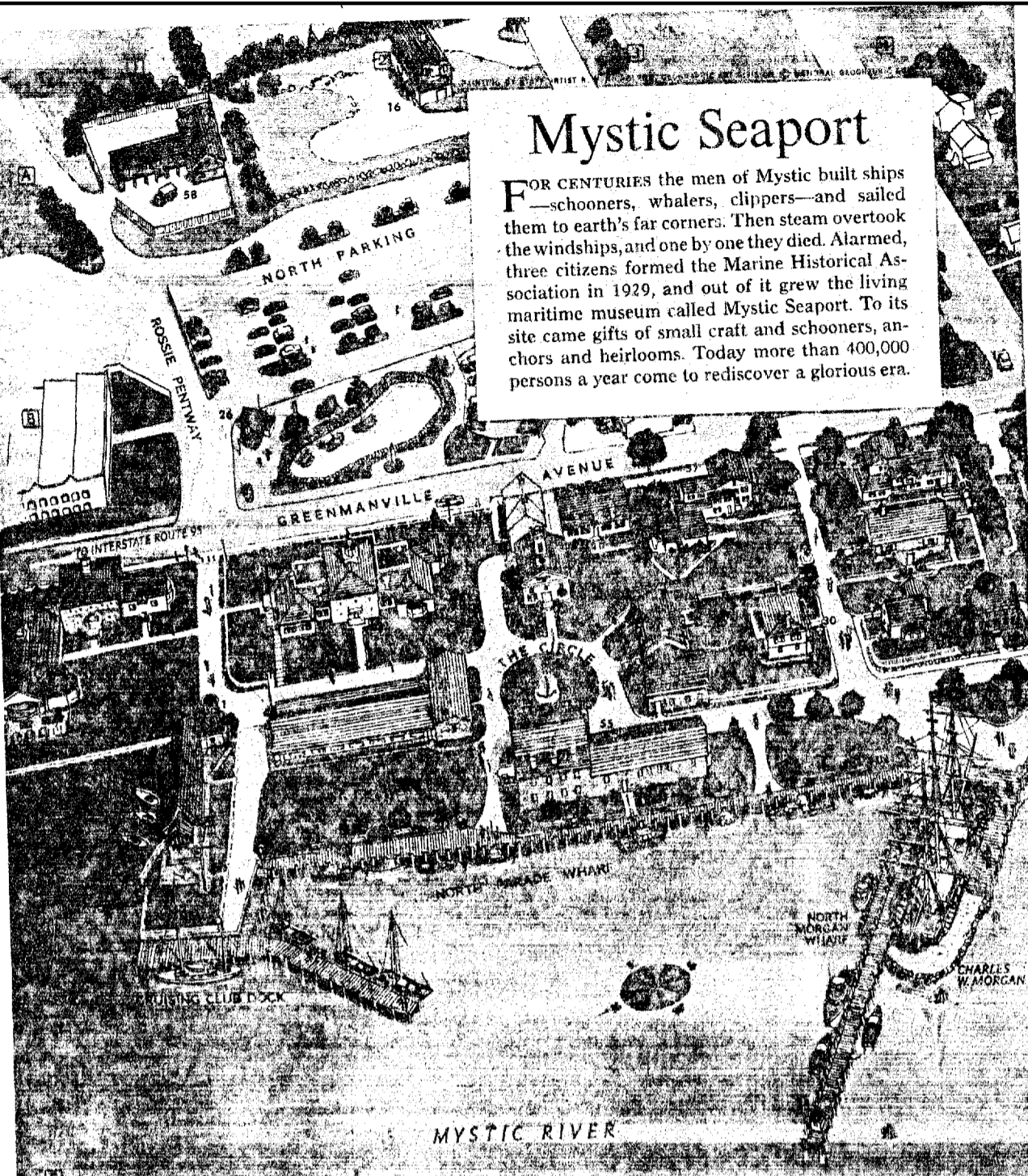
KODACHROME © NATIONAL GEOGRAPHIC SOCIETY 221



CPYRGHT

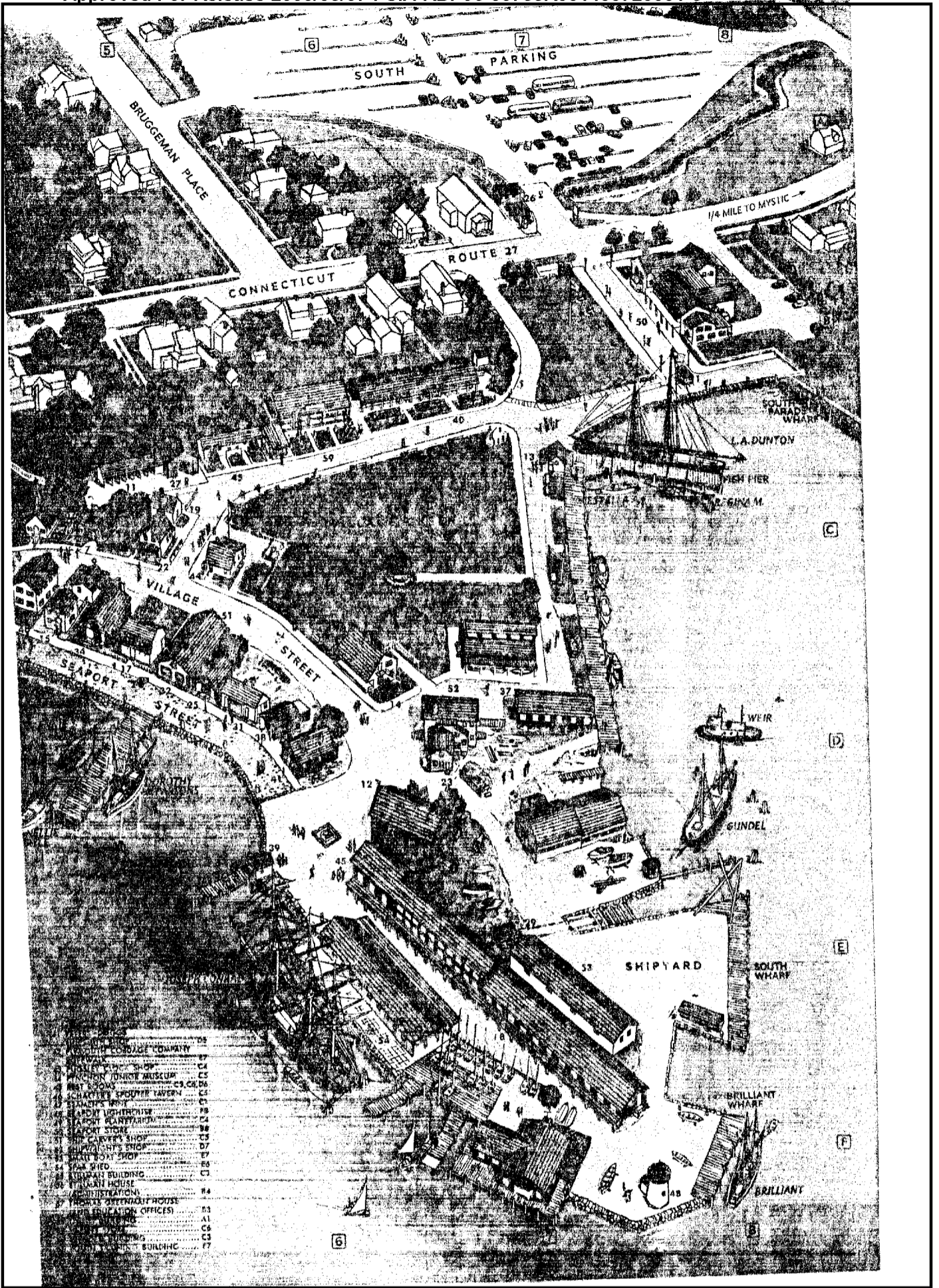
Mystic Seaport

FOR CENTURIES the men of Mystic built ships—schooners, whalers, clippers—and sailed them to earth's far corners. Then steam overtook the windships, and one by one they died. Alarmed, three citizens formed the Marine Historical Association in 1929, and out of it grew the living maritime museum called Mystic Seaport. To its site came gifts of small craft and schooners, anchors and heirlooms. Today more than 400,000 persons a year come to rediscover a glorious era.

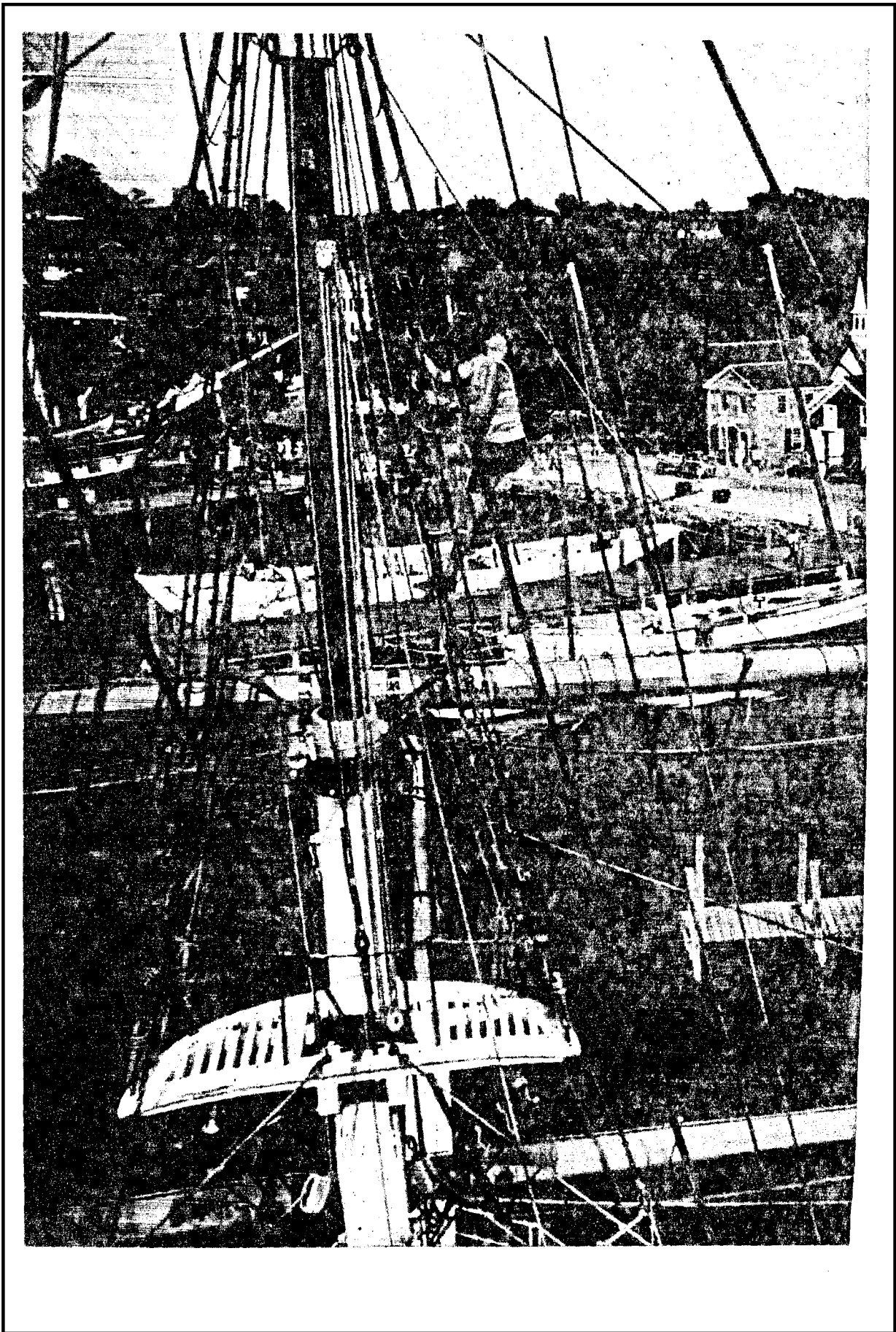


1 ADMISSIONS GATES.....	BB,C1	19 FIRST AID STATION.....	C5
2 AIDS TO NAVIGATION BUILDING.....	C2	20 FISH TOWN CHAPEL.....	C5
3 ALOHA MEETING HOUSE.....	C3	21 G. W. ALDINE WHITE LIBRARY.....	C2
4 AUSTRALIA'S SHED.....	C3	22 GEO. H. STONE GENERAL STORE.....	C5
5 BANDSTAND.....	C6	23 GREENMAN BROTHERS SHIPYARD OFFICE.....	D7
6 BARTHAM BUILDING (CURATORIAL AND ACCESSING STAFF).....	C3	24 HARBOR MASTER.....	D4
7 BOARDMAN SCHOOLHOUSE.....	C5	25 HOPMAKER'S SHOP.....	D5
8 BOAT SHED.....	D7	26 INFORMATION BOOTHS.....	A7,B1
9 BATHURST APOTHECARY AND DOCTOR'S OFFICE.....	C5	27 EVERY STABLE.....	C5
10 BUCKINGHAM HOUSE.....	C4	28 MALLERY BUILDING.....	C3
11 CARRIAGE SHED.....	C5	29 MARINE WHARF.....	D7
12 CHARLES MALLERY SAIL LOFT, RIGGING LOFT AND N.O. FISH CHANDLERY.....	D6	30 HILDRUP C. MALLERY MEMBERSHIP BUILDING.....	D5
13 CLAM SNACK.....	C7	31 MYSTIC BRIGGS W/CAVETS.....	C4
14 CLIFT BLOCK.....	D6	32 MYSTIC PRESS.....	D5
15 COUNTING HOUSE.....	C5	33 MYSTIC RIVER DIORAMA.....	C7
16 CURATORIAL STORAGE AND RESTORATION FACILITY.....	A8	34 NANTUCKET COFFRAGE STATION 10.....	D1
17 EDWARDS HOUSE.....	D5	35 NEW YORK YACHT CLUB.....	C1
18 FACILITIES FOR VISITING YACHTSMEN.....	C1	36 NORTH BOAT SHED.....	C2
		37 NOYES MEMORIAL BUILDING.....	D7
		38 OLD RELIANCE BARNHOUSE.....	D5
		39 OYSTER SHACK.....	D5
		40 PANTRY AND BOAT SHED.....	D7

CPYRGHT



CPYRGHT



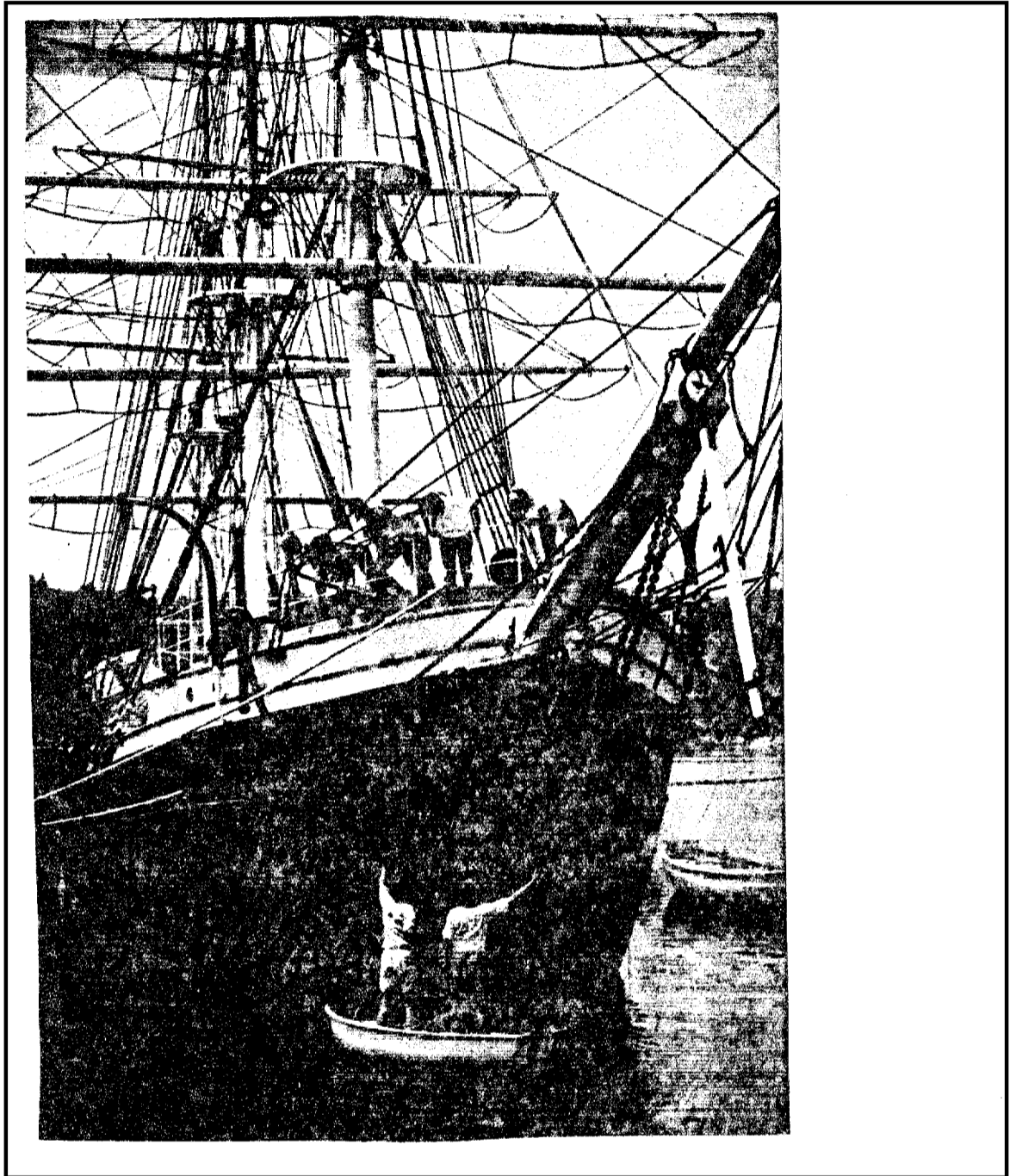
CPYRGHT

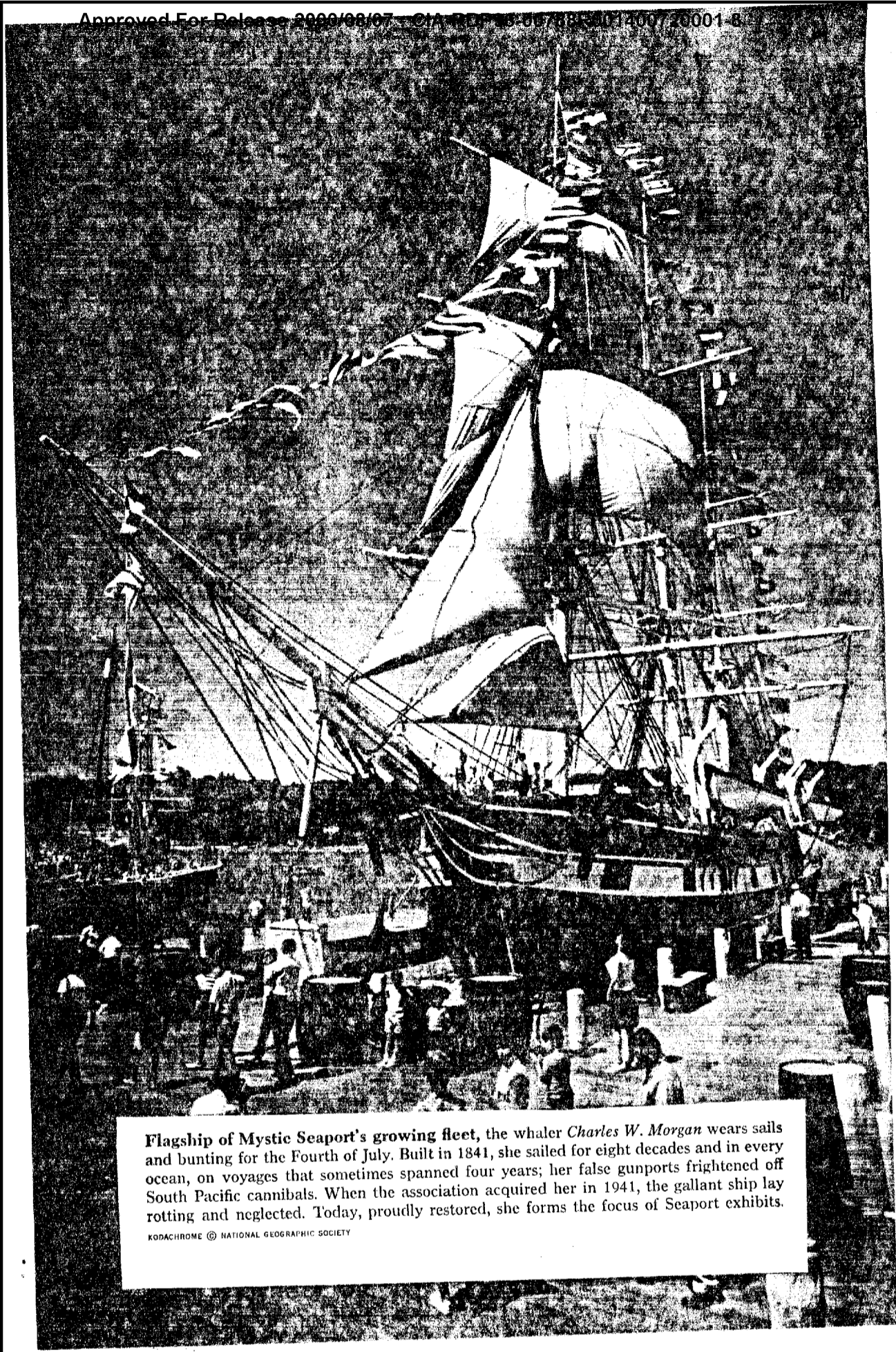
CPYRGHT



Window-shopping for history, visitors stroll along cobbled Seaport Street, whose venerable shops face the Mystic River. As a setting for its vessel-lined wharves, the Marine Historical Association scoured the east coast for old maritime buildings and moved them to the Seaport, creating an authentic coastal village of a century ago. Horse-drawn wagon holds barrels for ship's provisions.

CPYRGHT

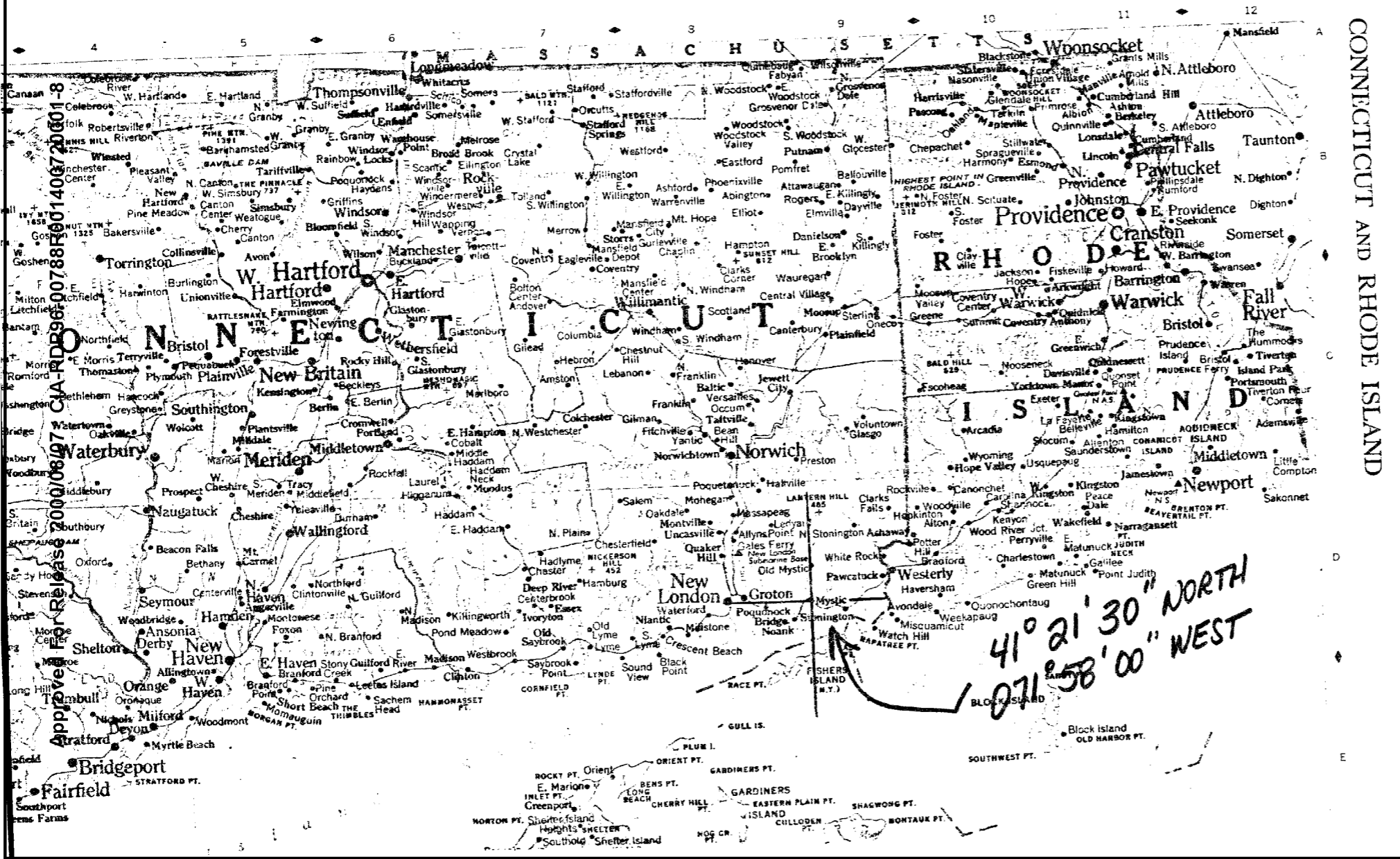
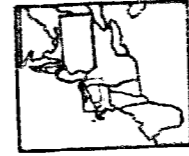




Flagship of Mystic Seaport's growing fleet, the whaler *Charles W. Morgan* wears sails and bunting for the Fourth of July. Built in 1841, she sailed for eight decades and in every ocean, on voyages that sometimes spanned four years; her false gunports frightened off South Pacific cannibals. When the association acquired her in 1941, the gallant ship lay rotting and neglected. Today, proudly restored, she forms the focus of Seaport exhibits.

KODACHROME © NATIONAL GEOGRAPHIC SOCIETY

CPYRGHT



CONNECTICUT AND RHODE ISLAND

41° 21' 30" NORTH
071° 58' 00" WEST

CPYRIGHT