

COORDINATE REMOTE VIEWING TRAINING (CRVT)

CRVT Report: 964

DATE/TIME CONDUCTED: 101425 Nov 82

SOURCE #: 63

FILE #: 14

SITE: Mystic Seaport, Connecticut

EVALUATION:       Decoding problems on signal line  
                  An off day

This document is made available through the declassification efforts  
and research of John Greenewald, Jr., creator of:

# The Black Vault



The Black Vault is the largest online Freedom of Information Act (FOIA) document clearinghouse in the world. The research efforts here are responsible for the declassification of hundreds of thousands of pages released by the U.S. Government & Military.

**Discover the Truth** at: <http://www.theblackvault.com>

10 NOV 82

1425

41° 21' 30" N  
71° 58' W

M BEAR

41° 21' 30" N  
71° 58' W



A Flat chopping

B land c

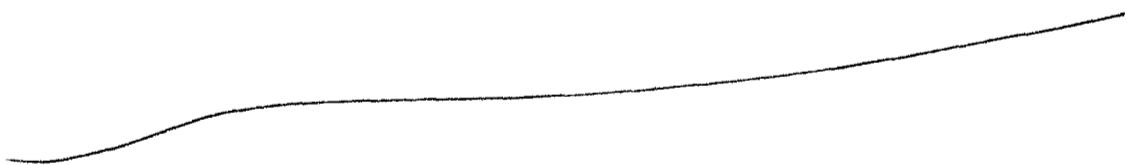
S-2  
dark }  
gray } CFB  
black }

41° 21' 30" N  
71° 58' W



A Con Break

41° 21' 30" N  
71° 58' W



A Rolling Rim

B Hill r

Com Break

~~Asl Break~~

Fast Flowing  
Free

41° 21' 30" N

71° 58' W

A Rising GP dropping

B Hill CBS

S-2

41° 21' 30" W

71° 58' W

A C/Direct

B peaks CBS

S-2

cold PC

gray PC

open PC

Hard CBS

-3-

desolate

Aol Break

Cold way  
Place

41° 21' 30" N  
71° 58' W



A Roll

B la

S-2

gray PC

open PC

dry smells CFB

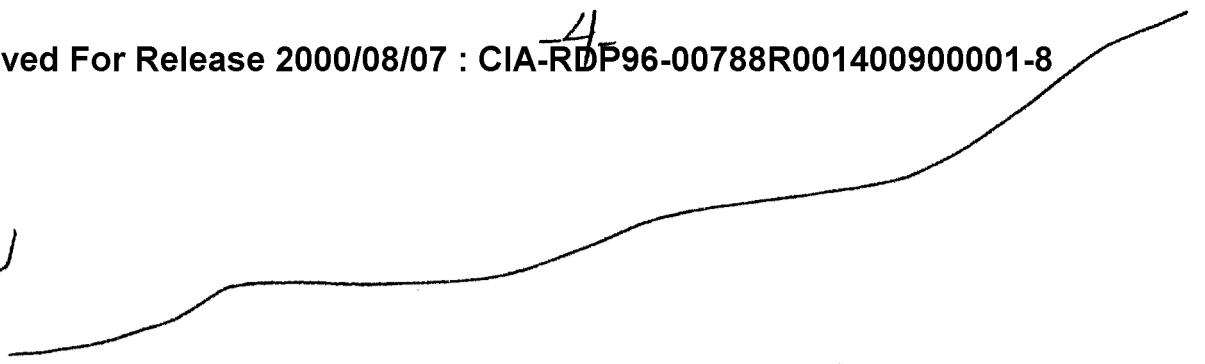
brown PC

trees c

Aol Break

High forested  
brown rolling hills  
like Huesca  
ntus.

41° 21' 30" N  
71° 58' W



A - Com Beach

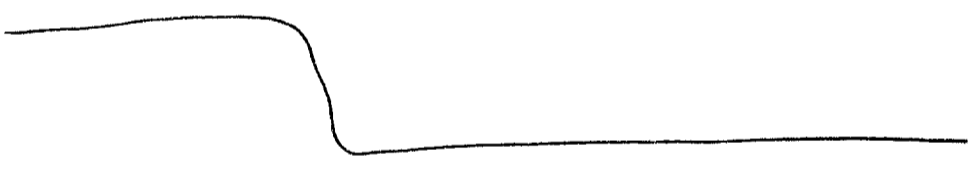
41° 21' 30" N  
71° 58' W



A Solid  
B land

A Solid  
B land

41° 21' 30" N  
71° 58' W

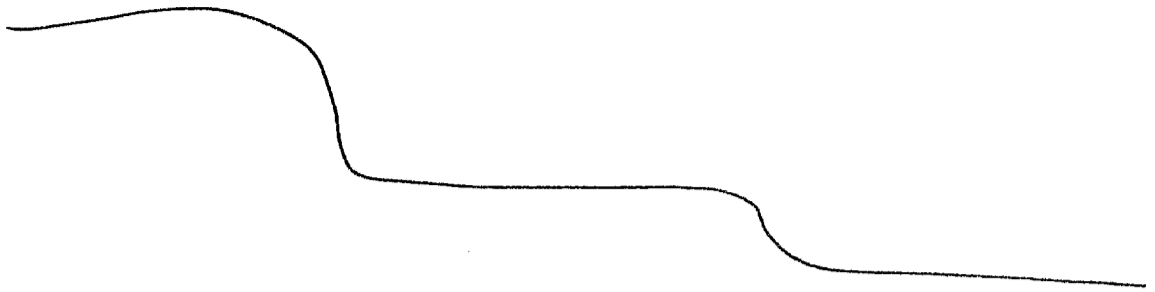


A Angles

B - Com Beach

S-2  
manmade

41° 21' 30" N  
71° 58' W



A Steps

B —

S-Z

Open PL

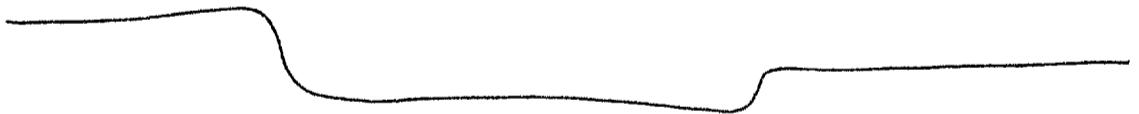
knolls PL

green PL

trees c

Ridge line  
w/ Valley

41° 21' 30" N  
71° 58' W



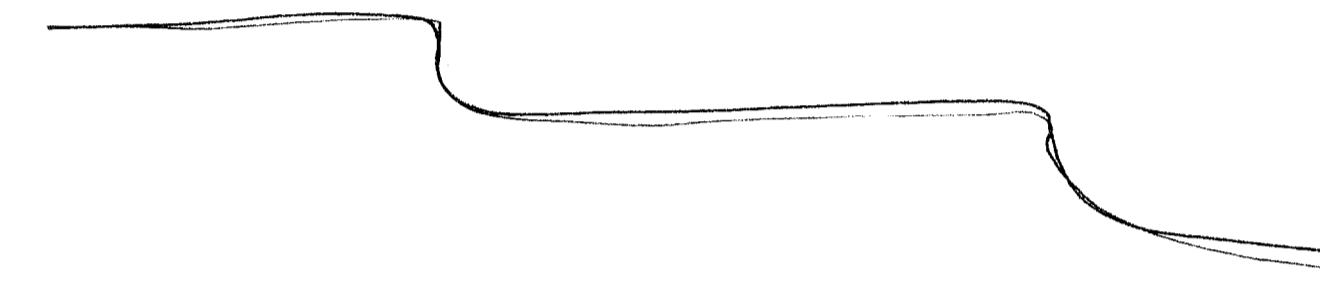
A CD

B land

S-Z white PL

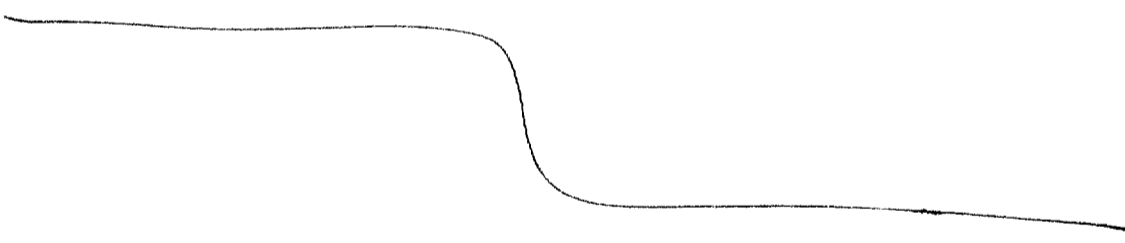
Hol Break  
LW inface c  
Blue green  
white

41° 21' 30" N  
71° 58' W



AM Break

41° 21' 30" N  
71° 58' W



A swimming  
B land  
S-Z dropping  
vertical



Sum

L/w in face

trees

Probably

open

cross

green

41° 21' 30" N

71° 58" N



A Angles

B bulchings

S-Z

41° 21' 30" N

71° 58" W



A flat

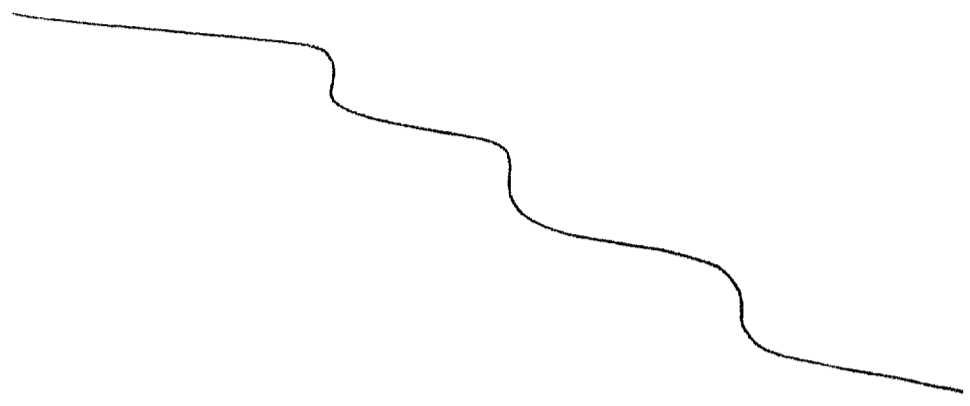
B -

S-Z

flat  
sectionals  
gray pc

open CPB  
dashed CPB  
hills CPB  
green CPB

41° 21' 30" N  
71° 58' W



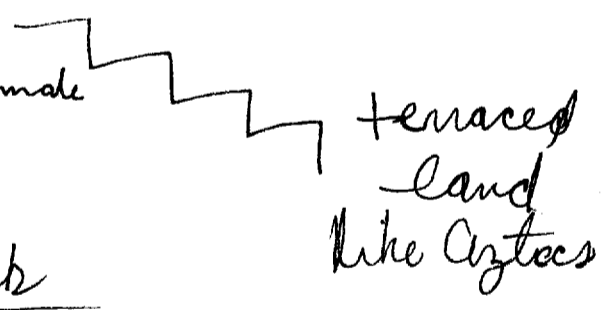
A - dropping steps

B ———

5-2 gray  
rocks

Ad Beds

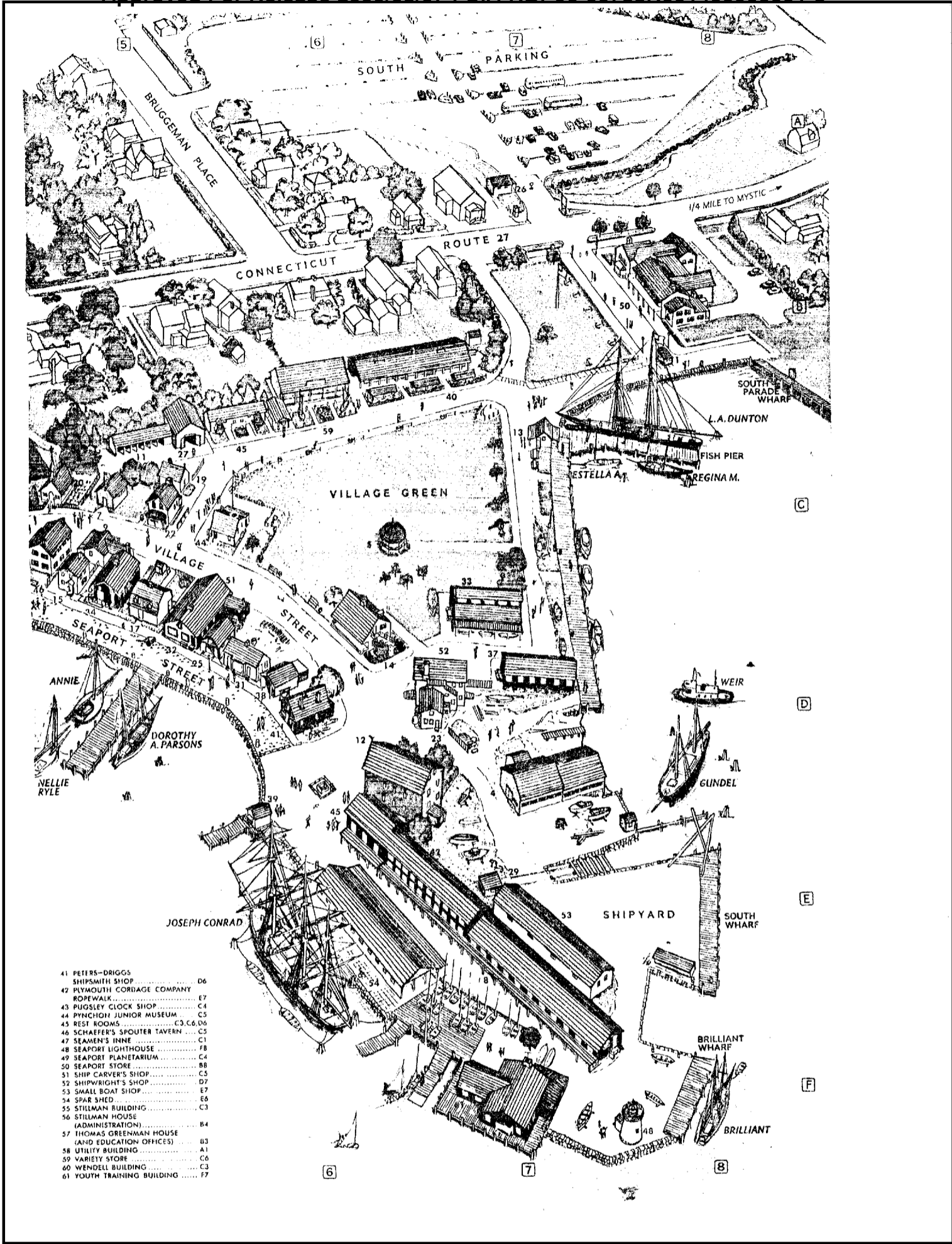
LW inface w/ hees gray, rock and a manmade  
something - Site is a \_\_\_\_\_?



Sum

LW inface  
manmade something  
hees  
gray  
Rocks

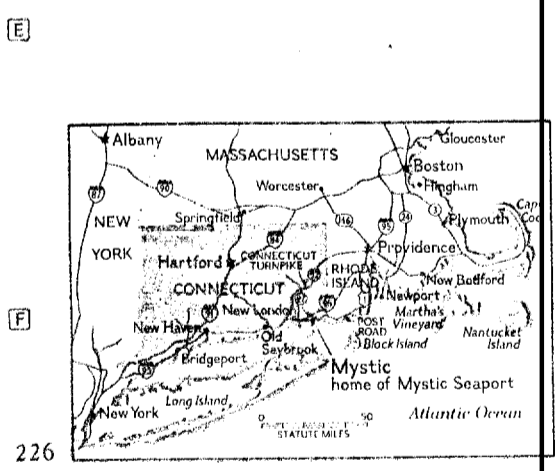
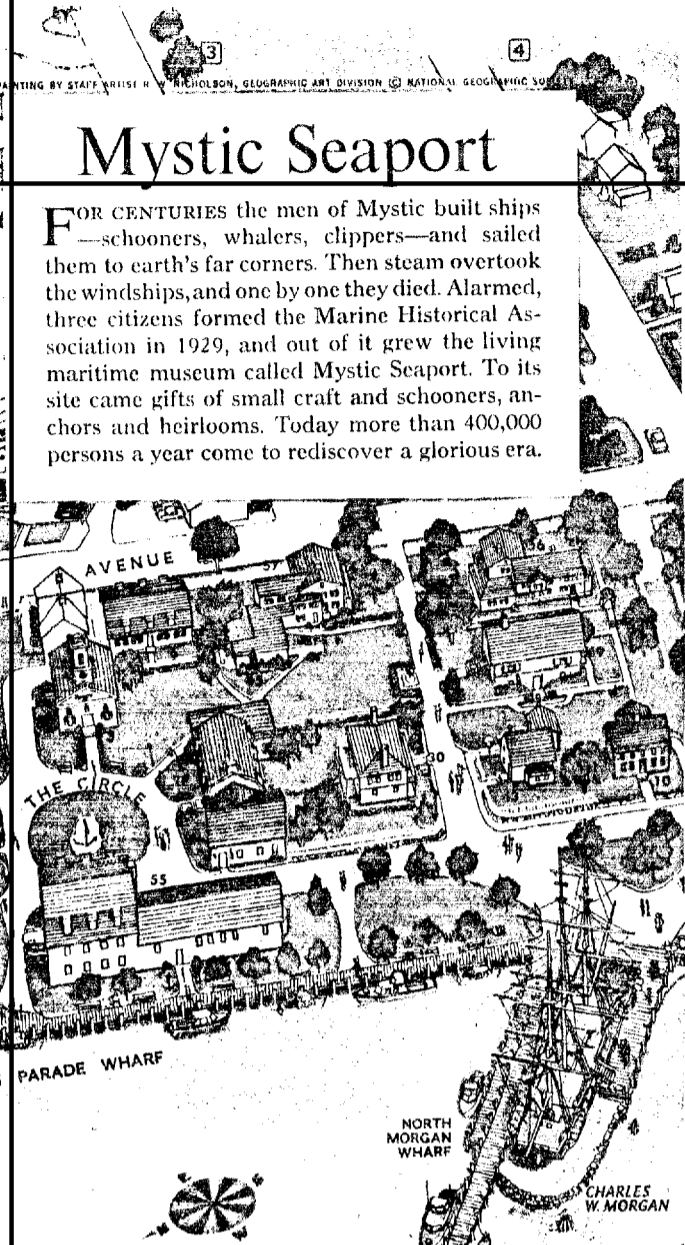
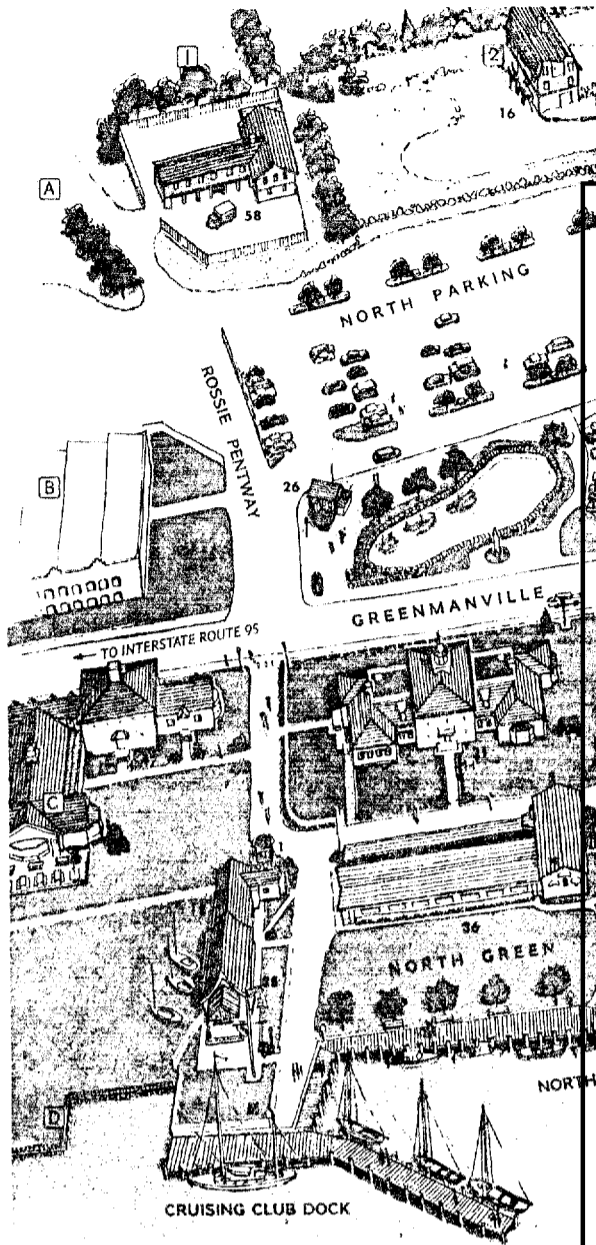
Ad Break  
gray island



- 41 PETERS-DRIGGS ..... D6
- 42 SHIPSMITH SHOP ..... D6
- 43 PLYMOUTH CORDAGE COMPANY ..... E7
- 44 ROPEWALK ..... E7
- 45 PUGSLEY CLOCK SHOP ..... C4
- 46 PYNCHON JUNIOR MUSEUM ..... C5
- 47 REST ROOMS ..... C3, C6, D6
- 48 SCHAEFER'S SPOUTER TAVERN ..... C5
- 49 SEAMEN'S INNE ..... C1
- 50 SEAPORT LIGHTHOUSE ..... F8
- 51 SEAPORT PLANETARIUM ..... C4
- 52 SEAPORT STORE ..... B8
- 53 SHIP CARVER'S SHOP ..... C5
- 54 SHIPWRIGHT'S SHOP ..... D7
- 55 SMALL BOAT SHOP ..... E7
- 56 SPAR SHED ..... E8
- 57 STILLMAN BUILDING ..... C3
- 58 STILLMAN HOUSE ..... B4
- 59 THOMAS GREENMAN HOUSE ..... B4
- 60 (AND EDUCATION OFFICES) ..... B3
- 61 UTILITY BUILDING ..... A1
- 62 VARIETY STORE ..... C6
- 63 WENDELL BUILDING ..... C3
- 64 YOUTH TRAINING BUILDING ..... F7

# Mystic Seaport

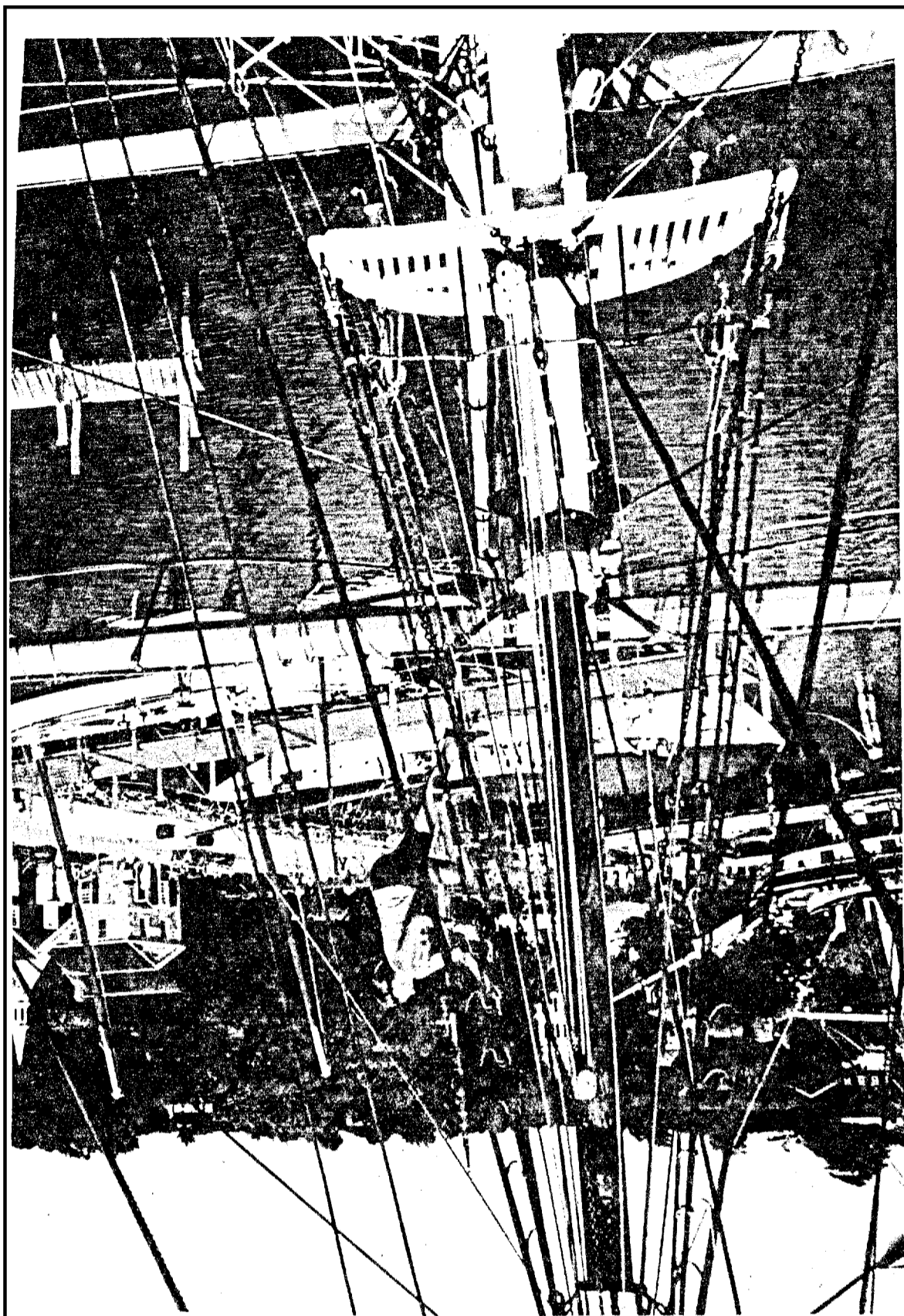
FOR CENTURIES the men of Mystic built ships—schooners, whalers, clippers—and sailed them to earth's far corners. Then steam overtook the windships, and one by one they died. Alarmed, three citizens formed the Marine Historical Association in 1929, and out of it grew the living maritime museum called Mystic Seaport. To its site came gifts of small craft and schooners, anchors and heirlooms. Today more than 400,000 persons a year come to rediscover a glorious era.



1 ADMISSIONS GATES .....	B8,C1	19 FIRST AID STATION .....	C5
2 AIDS TO NAVIGATION BUILDING .....	C2	20 FISHTOWN CHAPEL .....	C5
3 ALOHA MEETING HOUSE .....	C3	21 G. W. BLUNT WHITE LIBRARY .....	C2
4 AUSTRALIA'S SHED .....	D7	22 GEO. H. STONE GENERAL STORE .....	C5
5 BANDSTAND .....	C6	23 GREENMAN BROTHERS SHIPYARD OFFICE .....	D7
6 BARTRAM BUILDING (CURATORIAL AND ACCESSIONS STAFF) .....	C3	24 HARBOR MASTER .....	E4
7 BOARDMAN SCHOOLHOUSE .....	C5	25 HOOPMAKER'S SHOP .....	D5
8 BOAT SHED .....	E7	26 INFORMATION BOOTHS .....	A7,B1
9 BRINGHURST APOTHECARY AND DOCTOR'S OFFICE .....	C5	27 LIVERY STABLE .....	C5
10 BUCKINGHAM HOUSE .....	C4	28 MALLORY BUILDING .....	C3
11 CARRIAGE SHED .....	C5	29 MARINE RAILWAY .....	E7
12 CHARLES MALLORY SAIL LOFT, RIGGING LOFT, AND N.G. FISH CHANDLERY .....	D6	30 MILDRED C. MALLORY MEMBERSHIP BUILDING .....	C4
13 CLAM SHACK .....	C7	31 MYSTIC BRIDGE WEAVERS .....	D6
14 CLIFT BLOCK .....	D6	32 MYSTIC PRESS .....	D5
15 COUNTING HOUSE .....	C5	33 MYSTIC RIVER DIORAMA .....	C7
16 CURATORIAL STORAGE AND RESTORATION FACILITY .....	A2	34 NANTUCKET COOPERAGE .....	C5
17 EDWARDS HOUSE .....	D5	35 NEW YORK YACHT CLUB STATION 10 .....	D1
18 FACILITIES FOR VISITING YACHTSMEN .....	C1	36 NORTH BOAT SHED .....	C2
		37 NOYES MEMORIAL BUILDING .....	D7
		38 OLD RELIANCE FIREHOUSE .....	D6
		39 OYSTER SHACK .....	D8
		40 PANTRY AND BOAT SHEDS .....	B7

CPYRGHT  
CPYRGHT

CPYRGHT



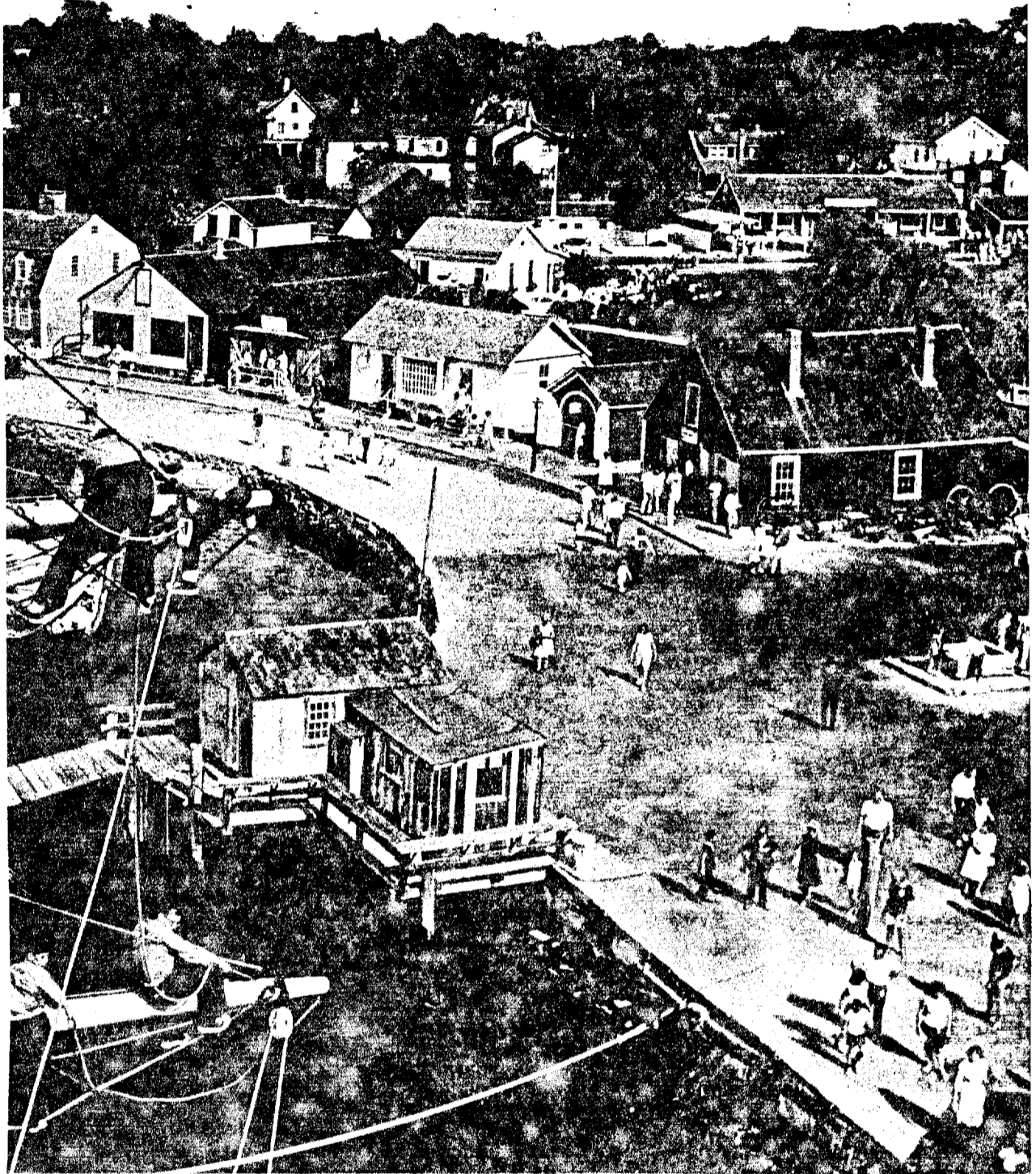
# Sail Lives On at Mystic

By ALAN VILLIERS

Photographs by WESTON KEMP

Aloft in the square-rigger *Joseph Conrad*, youngsters relive the rugged days of old.

KODACHROME © NATIONAL GEOGRAPHIC SOCIETY 221



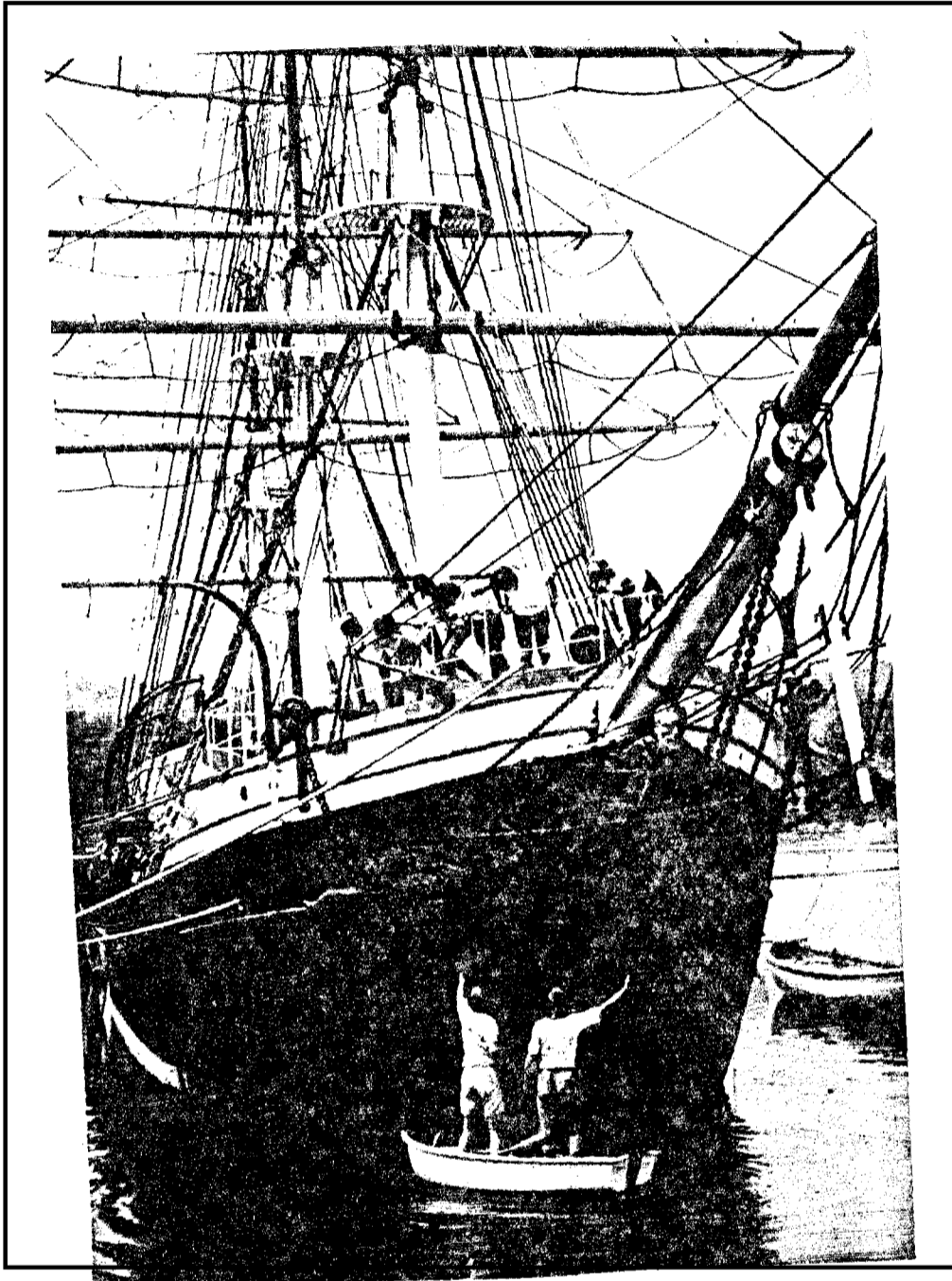
CPYRGHT

CPYRGHT

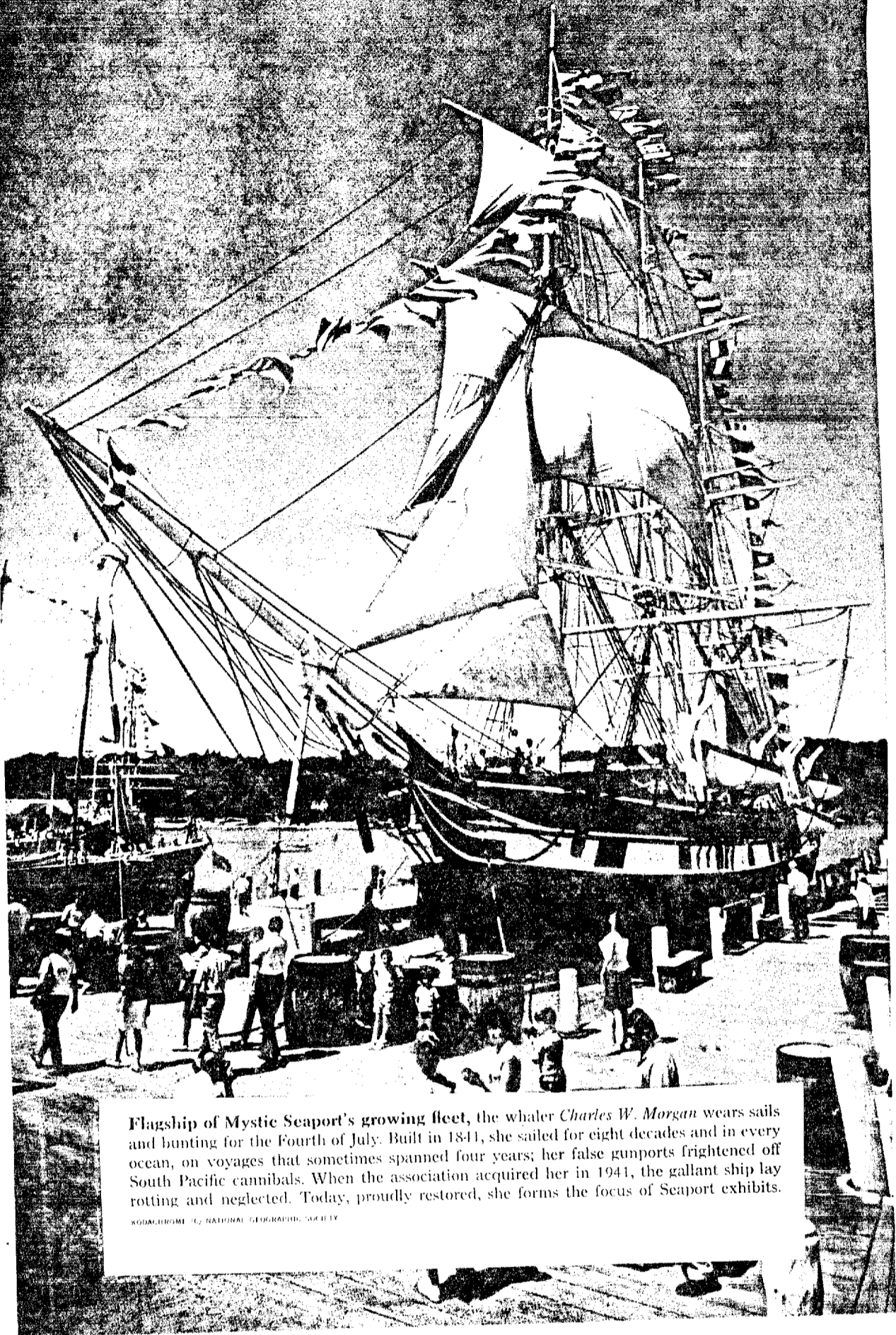


Window-shopping for history, visitors stroll along cobbled Seaport Street, whose venerable shops face the Mystic River. As a setting for its vessel-lined wharves, the Marine Historical Association scoured the east coast for old maritime buildings and moved them to the Seaport, creating an authentic coastal village of a century ago. Horse-drawn wagon holds barrels for ship's provisions.

CPYRGHT



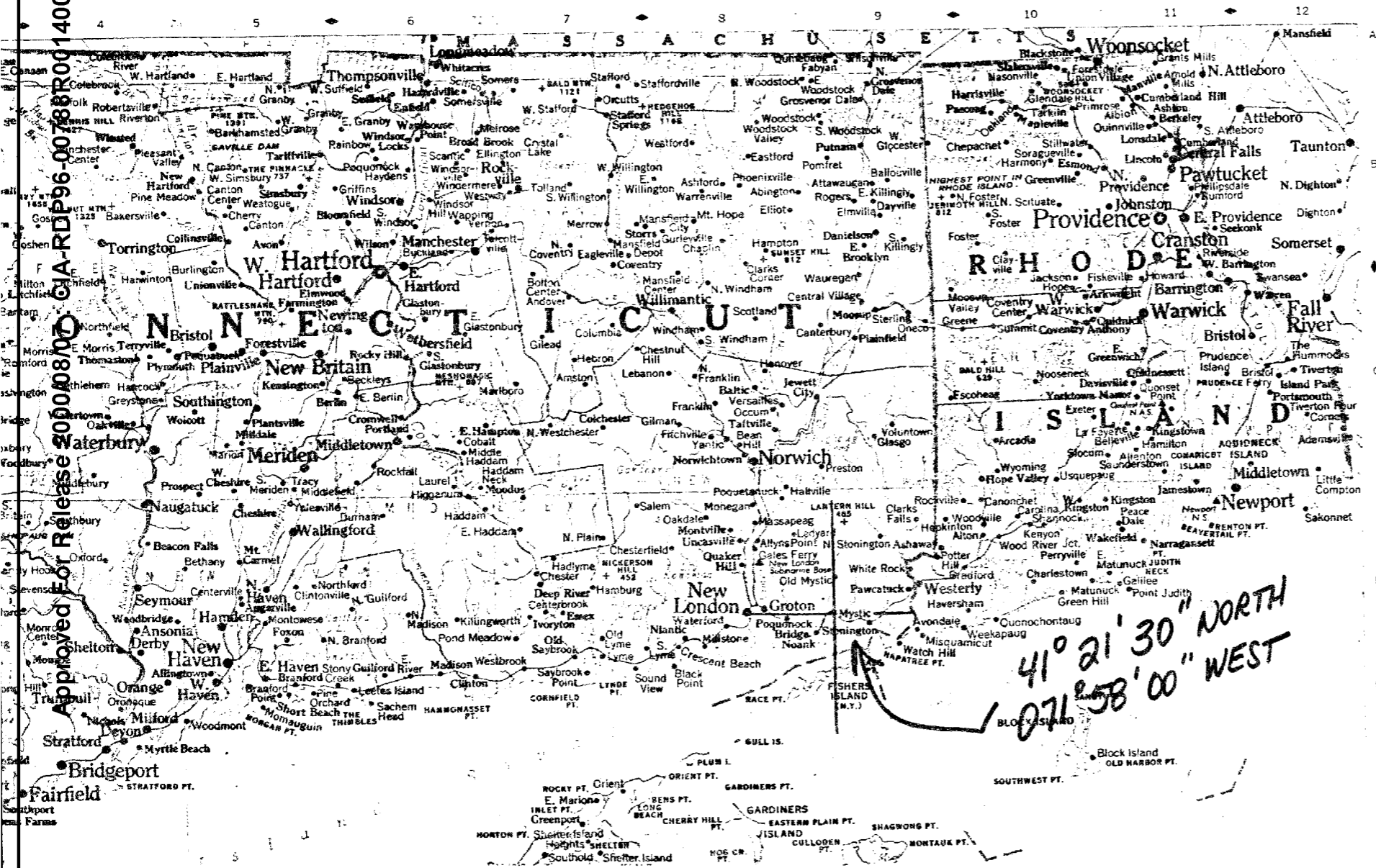




Flagship of Mystic Seaport's growing fleet, the whaler *Charles W. Morgan* wears sails and bunting for the Fourth of July. Built in 1841, she sailed for eight decades and in every ocean, on voyages that sometimes spanned four years; her false gunports frightened off South Pacific cannibals. When the association acquired her in 1941, the gallant ship lay rotting and neglected. Today, proudly restored, she forms the focus of Seaport exhibits.

KODACHROME © NATIONAL GEOGRAPHIC SOCIETY

CPYRGHT



CONNECTICUT AND RHODE ISLAND

41° 21' 30" NORTH  
071° 58' 00" WEST

CPYRIGHT