

COORDINATE REMOTE VIEWING TRAINING (CRVT)

CRVT Report: 977

DATE/TIME CONDUCTED: 131110 Dec 82

SOURCE #: 63

FILE #: 14

SITE: _____

EVALUATION: Zip - Unable to detect and/or decode site.

This document is made available through the declassification efforts
and research of John Greenewald, Jr., creator of:

The Black Vault



The Black Vault is the largest online Freedom of Information Act (FOIA) document clearinghouse in the world. The research efforts here are responsible for the declassification of hundreds of thousands of pages released by the U.S. Government & Military.

Discover the Truth at: <http://www.theblackvault.com>

38° N
78° 4' 10" W ————— m Break

38° N
78° 4' 10" W ————— m Break

38° N
78° 4' 10" W —————

m Break

38° N
78° 4' 10" W —————

A m Break

Ach Break

dark open
Water

38° N
78° 4' 10" W —————

A flat slab

B —————

38° N
78° 4' 10" W

A flat smooth
B land R

S-2
light c
beige CB
hill in distance

38° N
78° 4' 10" W

A flat
B land

S-2
open c
nice temp CB
Wet R

38° N
78° 4' 10" W

A flat
B land

S-2
streaked CB
open c

38°N
78° 4' 10" N

A flat
Bland

5-2
sandy CFB
Flat
Break

38°N
78° 4' 10" W

A M Break
~
}

38°N
78° 4' 10" W

A M Break
~
Hot Break
Water PC

38° N
78° 4' 10" W

A Angll

B -

S-2

Sharp corners

square

Con Break

38° N
78° 4' 10" W

M Beck

38° N
78° 4' 10" W

A flat
B - land

S-2
brown
square
blocks

manmade

38° N
78° 4' 10" W

A Flat
Blind

S-2
chunky
block

AOL Break

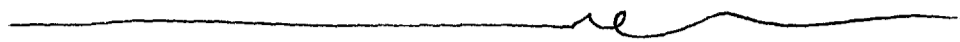
Like a stone wall
wall of stacked
blocks

38° N
78° 4' 10" W

A—
B—

S-2
strong C
depending on
stout P
AOL Break, military fort. ²⁵

38° N
78° 4' 10" W



M Break

38° N
78° 4' 10" W



A Rising

B —

38° N
78° 4' 10" W



A Rising

B manmade

5-2

Strong PC

fall PC

central PC

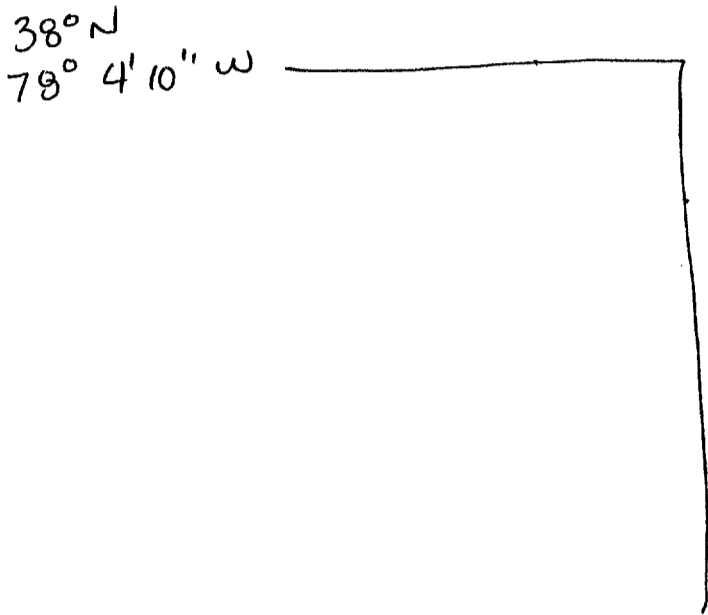
alone PC

red PC

lite brown PC

Sand color PC

quiet c
dusty smells ccs
grainy
warm
cold c



A flat/down
B structure

3-2
mand
tail
defending c
drenching ccs

Brech

Sum:

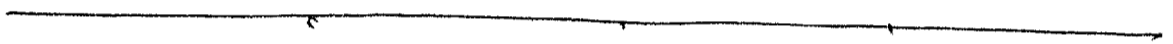
Flat wet land / open water
hills in distance

manmade structure stacked blocks, strong cold
alone, central quiet.

Aol Beek

fort sitting in
middle of nowhere

38°N
78°4'10"W



A flat
B land

scold

Site near hills

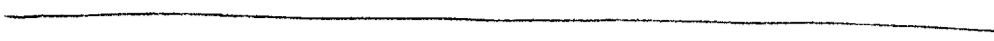
38°N
78°4'10"W



Aol Beek

38°N

78° 4' 10" W

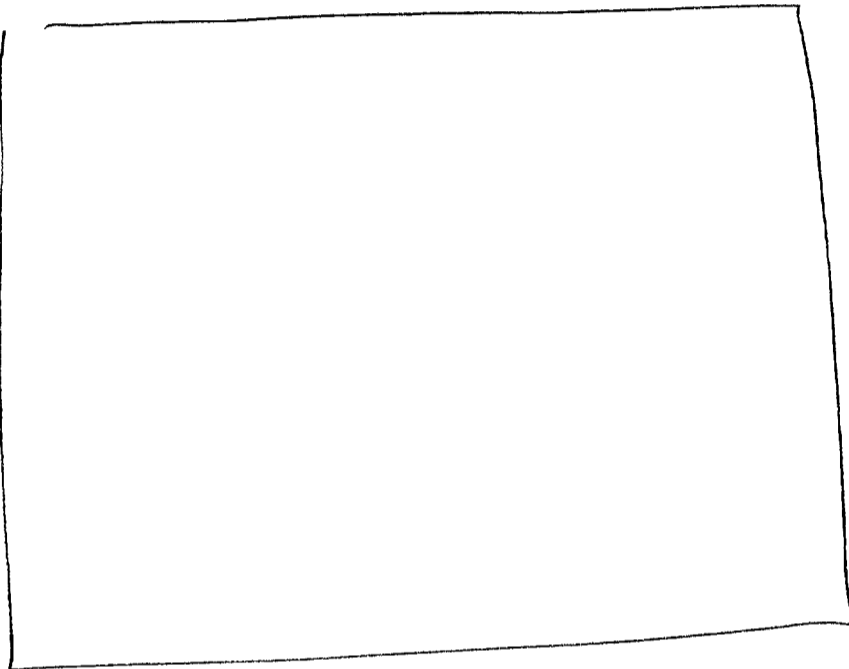


M Break

M.M. STRUCTURE

38°N

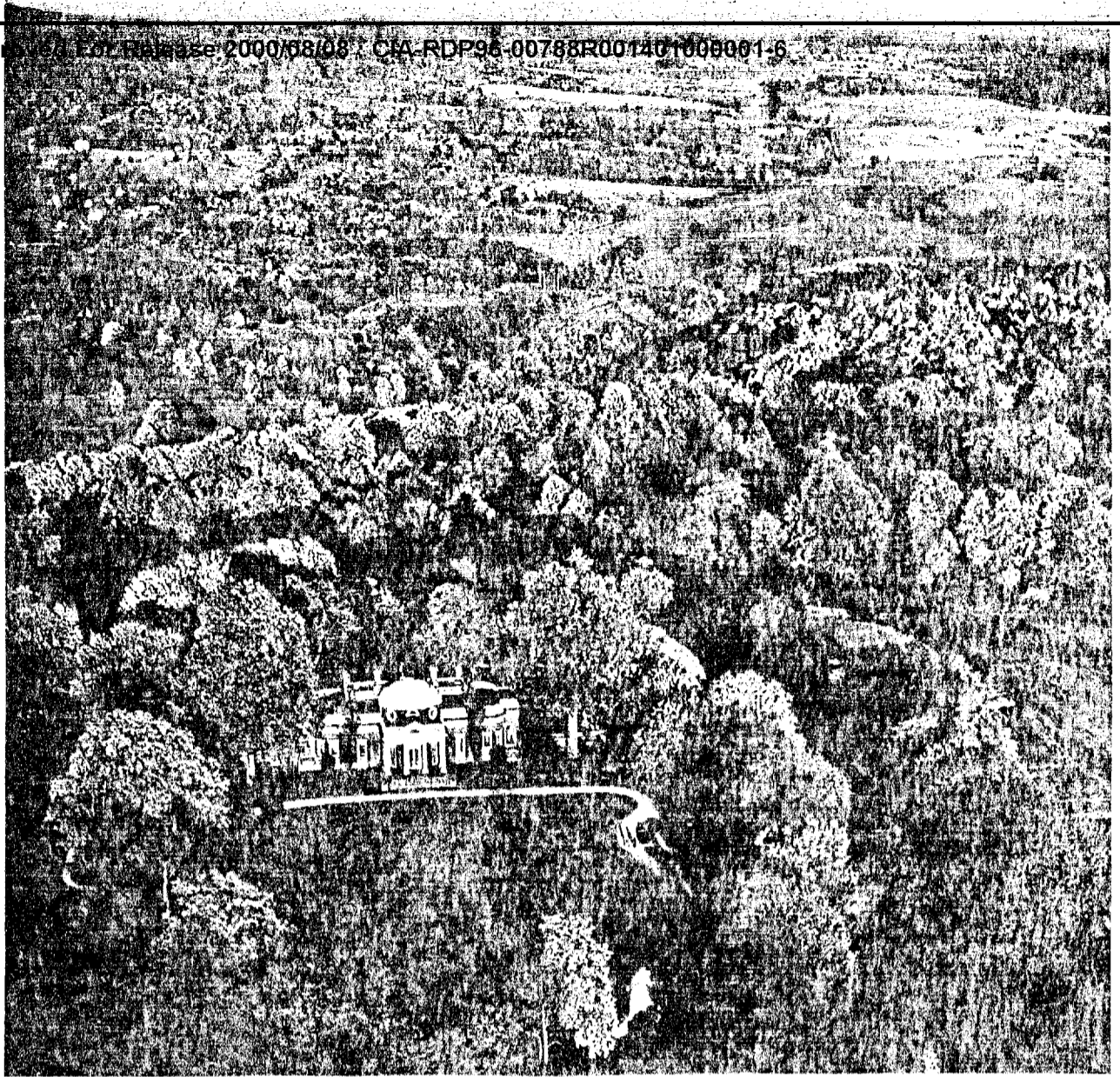
78° 4' 10" W



A enclosing
B structure of B

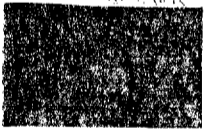
S-7
manmade C
tall PC
Reinforced Edges PC
stone CFB

Aol Break
Fort
mud can
terrain open
no neg
like Alamo
- or something
End

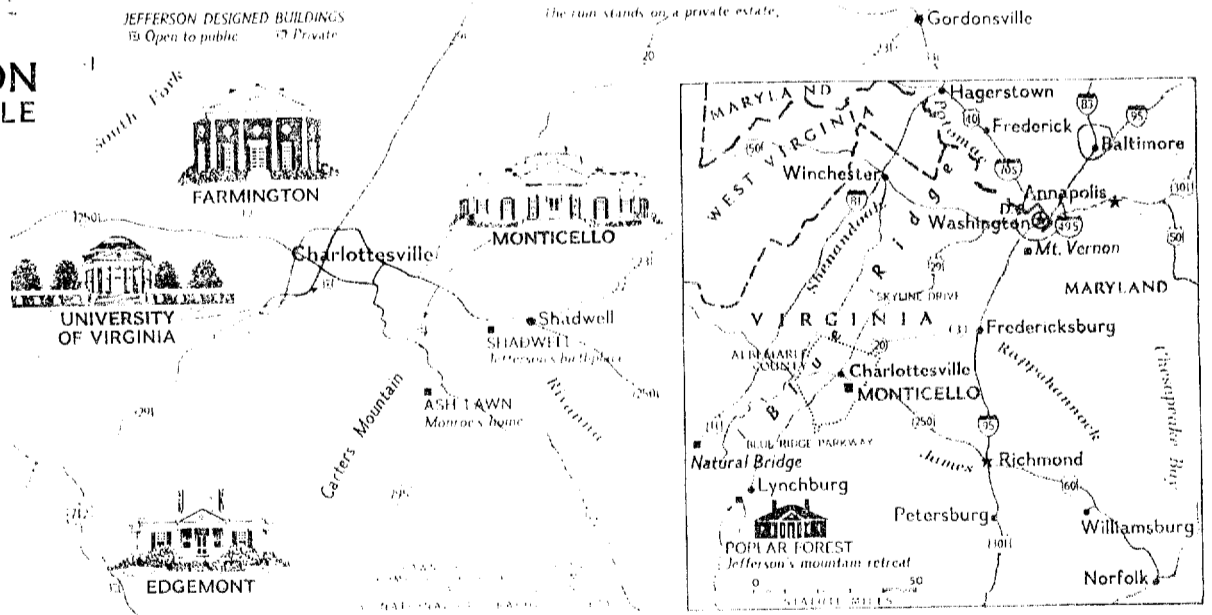


"Our own dear Monticello: where has Nature spread so rich a mantle under the eye? mountains, forests, rocks, rivers." Thus Jefferson described the surroundings of his beloved home. "He placed his mind, as he had done his house," wrote French traveler Chastellux, "on an elevated situation, from which he might contemplate the universe."

JEFFERSON SET THE STYLE



ing renovation
ing Jefferson's
dome's plinths.



CPYRGHT



Fair face of a dream realized reflects in the mirror of a fish pond. From the columned portico of the west front, the Sage of Monticello watched grandchildren at play, organizing their games and races. Monticello's stepped shoulders around the dome disappeared with extensive

decay in the mid- in 1954-5, architect original designs re