



~~SECRET~~

MILESTONES 1985 / 1986

- DIA RECEIVED OPCON OF ARMY CENTER LANE UNIT
- ACTION PLAN DEVELOPED
- STATUS REPORT SENT TO CONGRESS
DETAILED VERSION BRIEFED TO ICS

~~SECRET NOFORN~~

SP5353.05

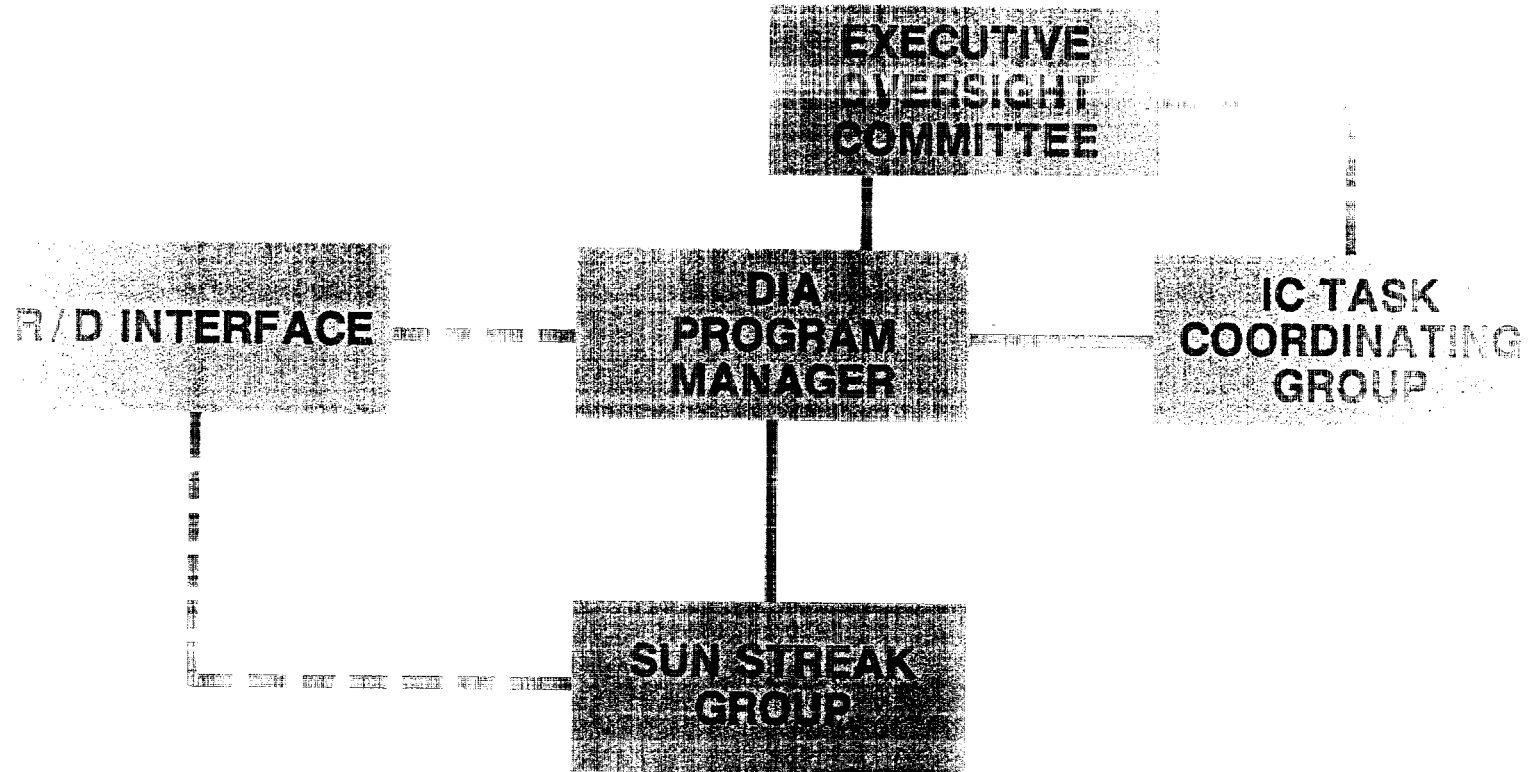
This document is made available through the declassification efforts
and research of John Greenewald, Jr., creator of:

The Black Vault



The Black Vault is the largest online Freedom of Information Act (FOIA)
document clearinghouse in the world. The research efforts here are
responsible for the declassification of hundreds of thousands of pages
released by the U.S. Government & Military.

Discover the Truth at: <http://www.theblackvault.com>



SECRET



~~SECRET~~

PM RECOMMENDATION

ALLOW SUN STREAK TO FUNCTION
AS AN EXPLORATORY TECHNIQUE
FOR 18-24 MONTH TRIAL PERIOD

~~SECRET NOFORN~~

SP5353.09

~~SECRET~~



FINDINGS

INDIVIDUAL VIEWER'S PERFORMANCE CORRELATES WITH PROJECT TYPE

DISTINCT CI, CN, AND CT POTENTIAL

● **S / T DATA DOES NOT YIELD PARAMETRICS**

● **PREDICTIVE DATA PROMISING UNDER CERTAIN CONDITIONS**

● **VIEWERS WORK WELL UNDER OPERATIONAL STRESS**

● **ANTICIPATE GREATER INSIGHT INTO USE OF RV AS EXPERIENCE GROWS**

~~SECRET NOFORN~~

SP5353.08

~~SECRET~~



ACTION PLAN REQUIREMENTS

TRANSITION TO DIA

- SENIOR OVERSIGHT COMMITTEE, IC TASK COORDINATING GROUP
- SAP, HUMAN USE APPROVAL
- TIGHT PROJECT CONTROLS, RECORDS, EVALUATION PROCEDURES
- R/D LINK FOR TRAINING, DATA EVALUATION, PERSONNEL SELECTION CRITERIA
- TRANSITION TO PROTOTYPE OPERATION (APPROX 3 YEARS)

~~SECRET NOFORN~~

SP5353.06



~~SECRET~~

CURRENT STATUS

TRANSITION ACCOMPLISHED

OVERSIGHT AND TASK COMMITTEES ESTABLISHED

**R/D LINKAGE YIELDED IMPROVED EVALUATION METHODS,
POTENTIAL SELECTION TECHNIQUES**

- **SCIENTIFIC RIGOR MAINTAINED**

- **PEER REVIEW**

- **AUTOMATED DBM AND RECORDS SYSTEM IN PLACE FOR
ALL PROJECT ACTIVITY**

- **VARIETY OF OPS PROJECTS UNDERTAKEN AND
EVALUATED**

~~SECRET NOFORN~~

SP5353.07



~~SECRET~~

IMPROVED TECHNIQUE

EVENTUAL TRANSITION TO MORE SOPHISTICATED ANALYSIS THAT COMPARES EACH/EVERY RV-ORIGINATED DESCRIPTION WITH ACTUAL TARGET CHARACTERISTICS, TO THE EXTENT KNOWN. DATA ELEMENTS ARE WEIGHTED WITH RESPECT TO BOTH EXISTENCE AND IMPORTANCE

~~SECRET NOFORN~~

SP5353.12



SUMMARY DATA EVALUATION SHEET

PROJECT	COMPLETED	SESSIONS	SOURCES	DATA CATEGORIES							COMMENTS	
				a. GEO.	b. OBJ. L.S.	c. OBJ. S.S.	d. FN. L.S.	e. FN. S.S.	f. PERS.	g. PR.		
8701	11 JUNE 87	12	003	2	2	1	1+	1	-	-	-	
			018	-	-	0	1	0	-	-	-	
			021	1	2	(10)	-	-	-	-	-	() = C.B.E.
			101	1	2+	2+	1+	1	-	-	V	6 MONTH PR.

SP3333 * 2