

1 apr 85

1242

8601

End 1349



Notes:

101  
051  
8601  
1242  
1349

2

This document is made available through the declassification efforts  
and research of John Greenewald, Jr., creator of:

# The Black Vault



The Black Vault is the largest online Freedom of Information Act (FOIA)  
document clearinghouse in the world. The research efforts here are  
responsible for the declassification of hundreds of thousands of pages  
released by the U.S. Government & Military.

**Discover the Truth** at: <http://www.theblackvault.com>

*B. B. B.*  
Monitor: Fred  
FT Meade, MD  
01 1242 APRIL 86

PI. a little diarrhea

210723

052913



A across  
fluid  
B water

210723

052913



A across  
hard  
b land

A rising  
hard  
B land.

210733  
052913



A. across  
hard  
B land

A up  
angle  
across  
hard  
B structure

210733  
052913



7

A flowing  
liquid

B water

A hard  
across

B LAND

A soft  
across

B land

L/W/L interface

A across  
angle  
down  
hard  
manmade

B structure

AOL Break  
ice, man

52

green  
blue  
jasmine  
light  
cool  
sandy  
rough  
gravelly

sweet smell  
smoky smell

ADL Buds  
LIKE BURNING  
WOOD

green smell  
gray smell

bitter taste  
ashy taste

gurgling

ADL Buds  
SLOWING

quiet sound  
murmuring sound

blue  
yellow  
orange

yellow  
fan

gray  
lumpy

thick  
heavy  
open  
enclosed

AI Break.  
feet little  
weak on the  
legs.

TAA  
AROUND  
THROUGH  
BARRED

S-4

~~AI~~  
AI BREAK  
feet heavy,  
cautious

UP  
AROUND  
OPEN

wide  
ACROSS  
UNENCUMBERED S-4

THIN  
NARROW  
OPEN  
ENCLOSED  
ROUGH

AJ BREAK  
LONELY

BLAKE  
TAN  
THICK

CONFUSION  
BREAK:  
THICK

TAIL

AOL BREAK  
SPYARISH.

THICK  
LONG  
WIDE  
NARROWING  
BOUNDED S-4

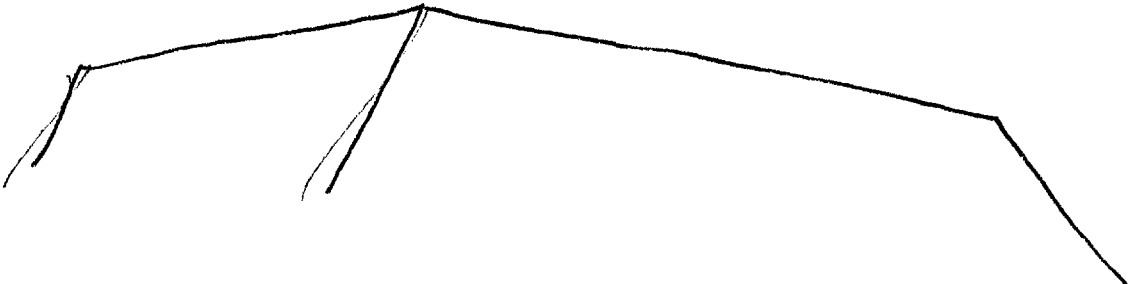


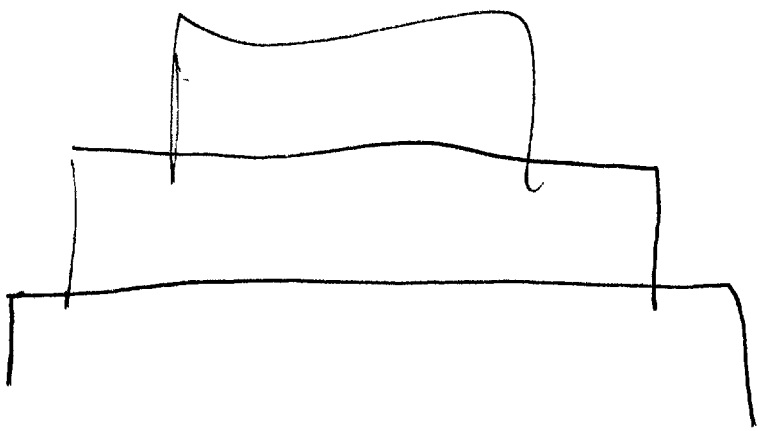
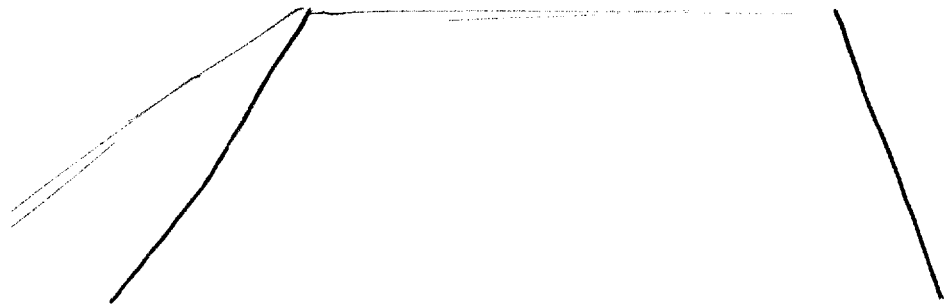
RISING  
STRENGTH S-4  
WIDE  
BIG  
LARGE  
BOYNTON S-4

FLAT  
LOW  
WIDE  
OPEN

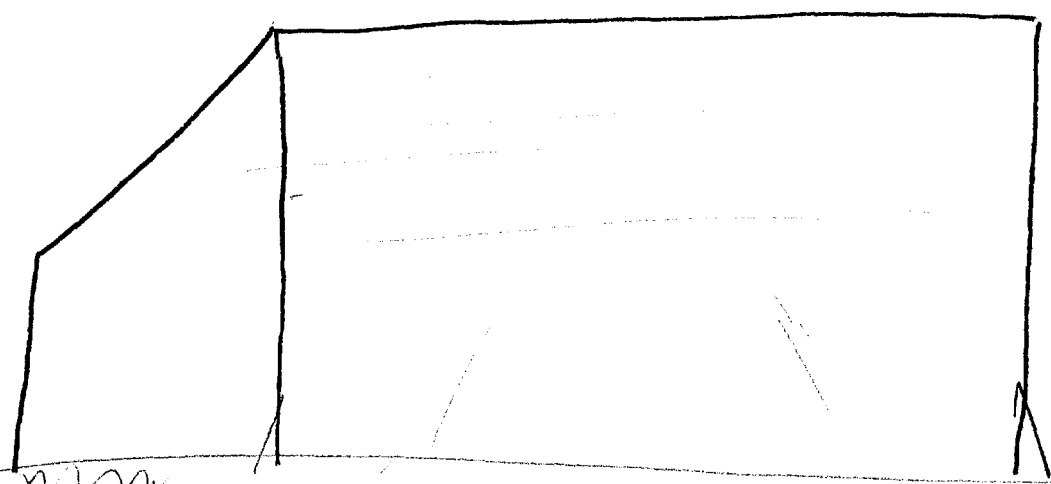
RISING  
LARGE  
DOWN

AT BREAK  
FEEL SOME  
AWE, SOME  
MEMORANCE





SIDE OF A LAND/WATER/LAND  
INTERFACE, (PROBABLY A RIVER.) SIDE IS  
ROLLING, FLAT AND RISING LAND. THERE  
IS AT LEAST ONE STRUCTURE, PROBABLY  
TWO (MAYBE MORE) ONE STRUCTURE IS  
THICK, LONG, WIDE. THERE IS SOMETHING  
WHICH IS THIN, NARROW, ROUGH AND HAS  
BOTH AN OPEN AND ENCLOSED FEELING

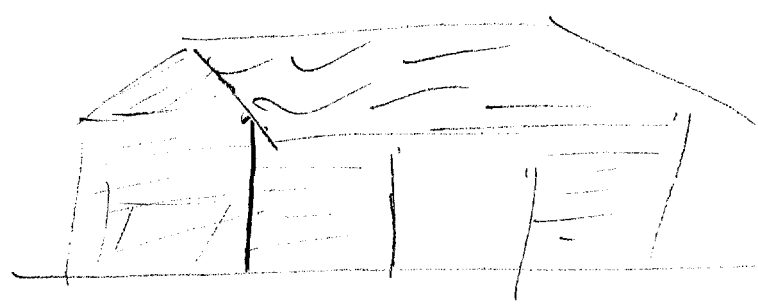


Blax K

//

AOL  
SK

AOL



S2 D AI EI T I AOL

BLUE

WAVY

WATER SK  
                    

DARK

HEAVY  
THICK

STRUCTURAL  
BUILDING



GRAY  
GRAINY

DARK

ENCLOSED

QUIET

TIERED  
STORIED

AI BREAK  
ERIE,  
STRANGE  
CHILLS

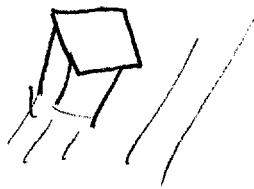
DARK

S2

AOL

A13  
15

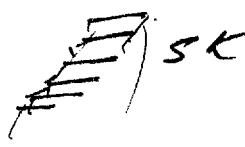
TOWER SK



TALL  
Rounded

FRESH  
USED

STAIRS



TURRET



Rounded  
BENT  
Doubled

SILENCE

COMMOTION

~~AI~~  
At 3244  
ERIE

ERIE

CLOVER  
GRASS

BLUE

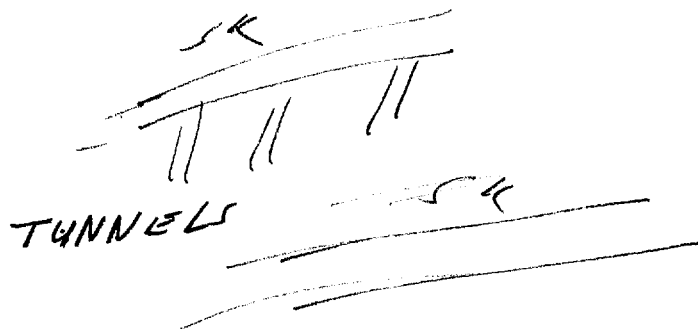
WATER

AOL 3244  
POND

Heavy  
THICK

MISTY  
DARK

WALKWAYS



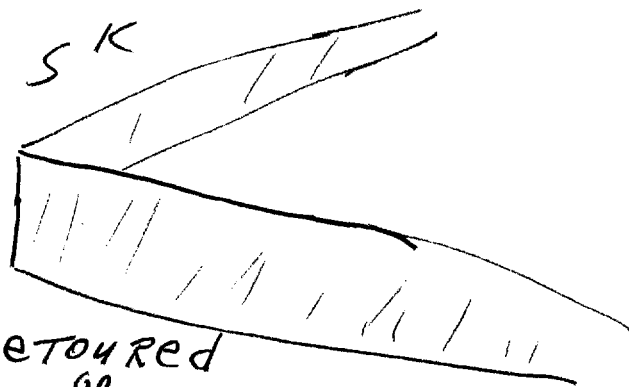
ROUNDING  
BENT

WARM  
HUMID  
STUFFY

TWISTING

ENCLOSED

WALLS



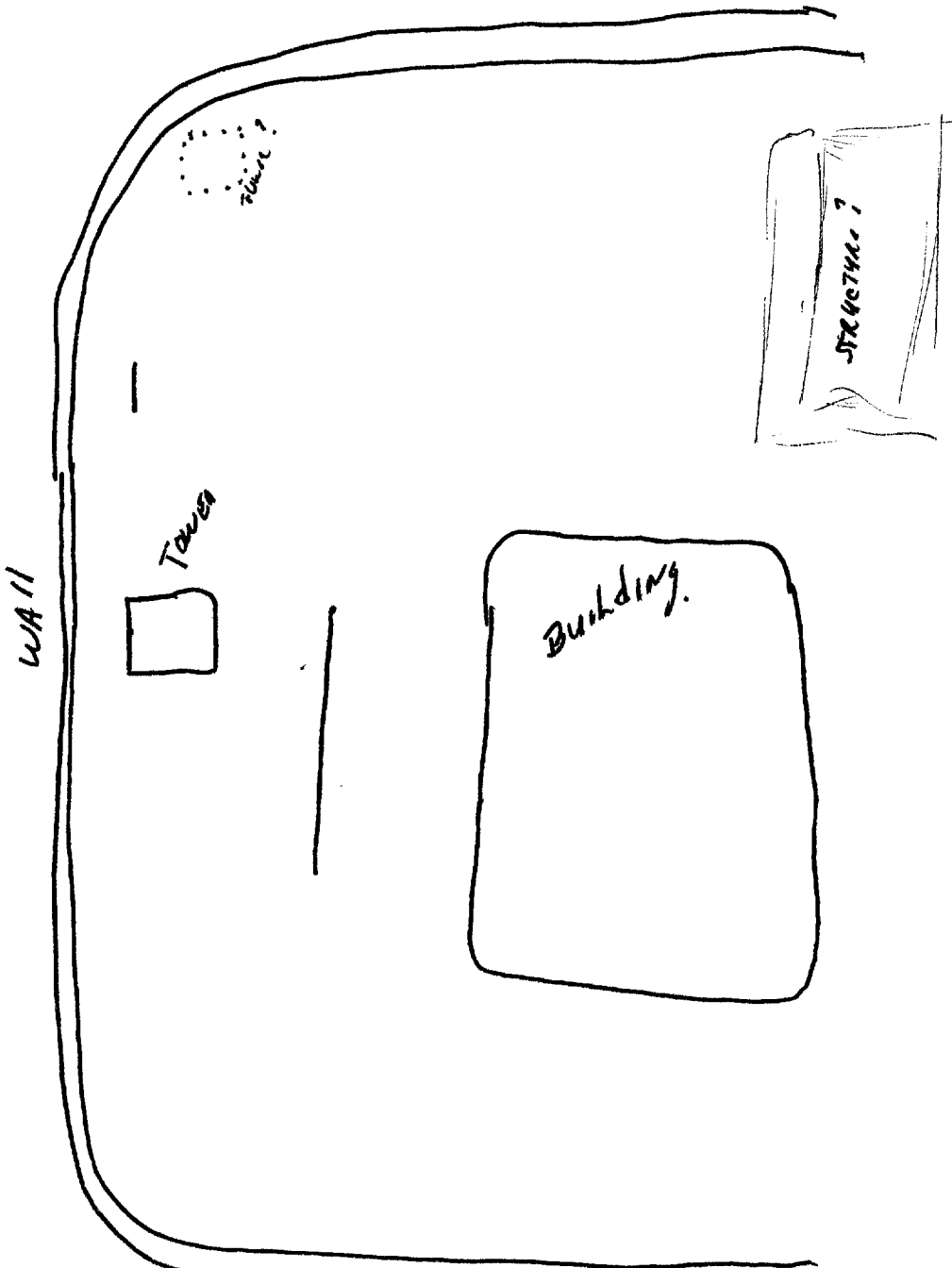
DETACHED  
OR  
DETACHED

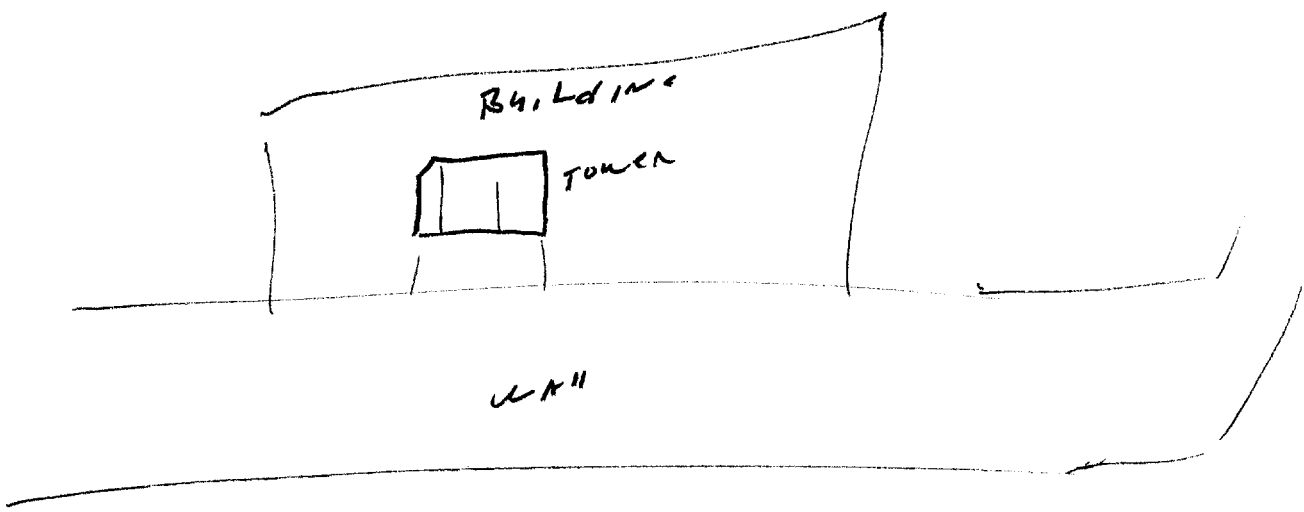
SHIMMY

UTILITARIAN



51c





S2  
DARK  
ROUGH  
GRAVEL

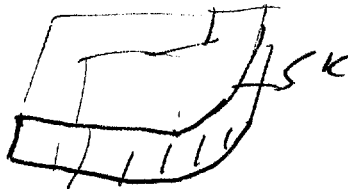
AOL BREAK  
TEMPLE

TOWER

BONDED  
BUILT  
INTELCONNECTED

CONFUSION 3A  
DIVERSED

TERRACE

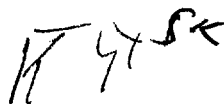


BLACK  
COOL

POSTER



CURTAIN



~~COOL~~

COGNITRON

LARLE

FORMAL FEELING

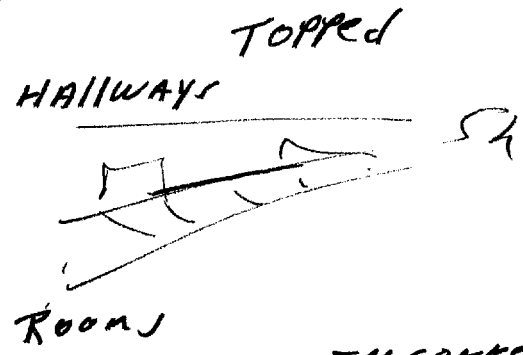
CONF 3A  
DIVERSED

SQ  
DARK  
DANK

COOL  
AROUND

FETID  
EERIE  
LEELY

STONE LIKE



INTERCONNECTED  
SEPARATED

ABANDONED

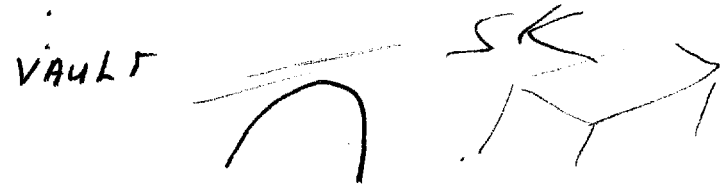
TEMPORARY

DOCKED

STONE FLOOR

SECURE FEELING  
ANTICIPATION  
WAITING

DARK



HIDDEN

DOLOROUS

MILDEW SMELL

ADZ  
ABANDONED  
PRIOR EMANATION?

LITTER  
HARRY  
HASTE  
HALLWAY  
LEFT  
DELIVERED  
DONE  
FACTS  
FULLSIDE  
TRACKED  
EMPTY  
CONCERN  
CLOSED  
COOL  
DIRTY  
CARETAKER  
GUARDED  
DELIVERED  
WALK  
PAST  
AGO  
THROUGH.

END 13:49

8601/2c

The site is located amid an extensive area of structures in a very hot, dry place. A water body, possibly a river, is nearby. Structures are of various sizes and shapes; some have domes and arched doorways. Skinny dogs and farm animals are present.

The site seems to have served as a type of containment area (NFI). It has been hastily abandoned.