

SG1J

SG1J

Monitor.  
FT Meade, Md  
24 0914 Mar 86

TAPE 1126

PI. little ulcer.

082927  
597765

8604

101

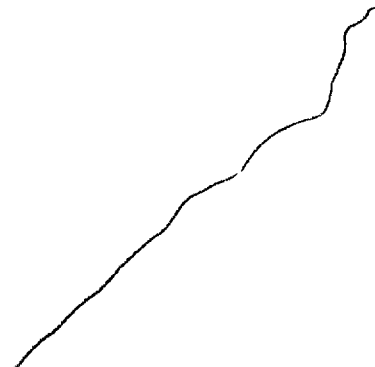
099

24 Mar 86

0914

1017

2



A flat across  
hard

B land

A across  
hard

B —

This document is made available through the declassification efforts  
and research of John Greenewald, Jr., creator of:

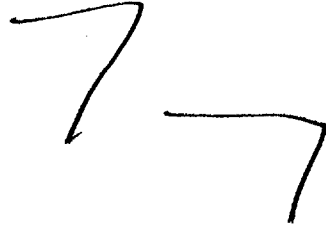
# The Black Vault



The Black Vault is the largest online Freedom of Information Act (FOIA)  
document clearinghouse in the world. The research efforts here are  
responsible for the declassification of hundreds of thousands of pages  
released by the U.S. Government & Military.

**Discover the Truth** at: <http://www.theblackvault.com>

012 92 7  
597 769



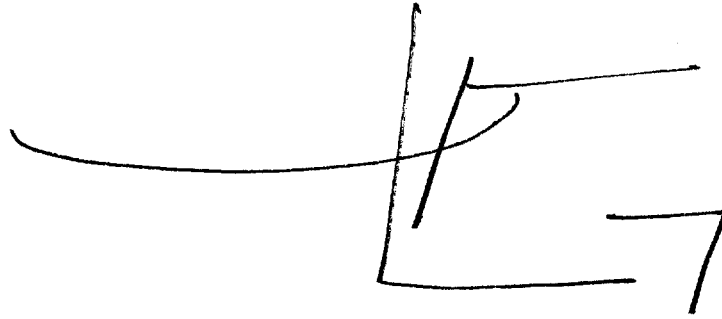
A circular  
hard  
Man made  
B structure

A decars  
up  
down  
hard  
secure  
B structure

All 3rd  
LOW STRUCTURE

082927

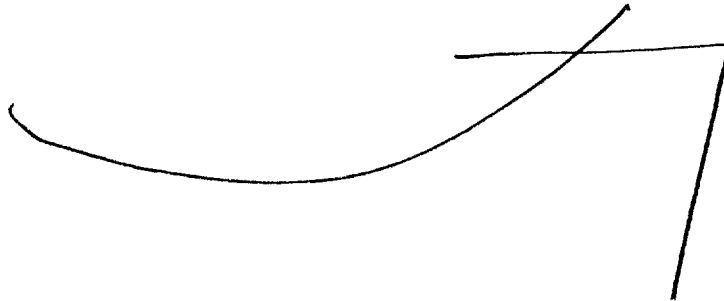
597769



TM Break  
 Confusion Break

082927

597769



A sloping up  
 hard  
 man made  
 B structure

A ACROSS  
 ANGLE  
 DOWN  
 HARD

B STRUCTURE

082927  
597769



A curving  
around  
hard

B —————

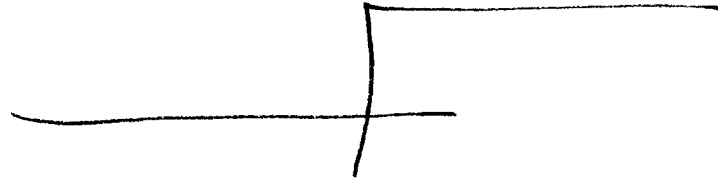
A across  
angle  
down  
hard

B structure

082927  
59776

AOL Break  
Vet Nam  
Merrill

02927  
597769



A. across  
hard  
B land

A up  
thin  
up  
angle  
across  
hard

B structure

S2,

Brown

Not Brah  
Mossaic

green  
thick smell  
bush smell  
BLACK  
BLye  
ORANGE

6

DARK  
DAMP

AOL BREAK  
SMELL LIKE  
SULPHUR.  
IRRITATING

METALIC TASTE  
CLEAN, STERILE TASTE

SMOOTH  
GRANULAR  
INDENTED

SHUFFLING NOISE  
SLIDING NOISE.

AOL BREAK  
LIKE CARBON  
BOX OVER A  
CONCRETE FLOOR

HUSH

AOL BREAK  
LIKE A JUMBLE  
OF MUMBLER.

people sounds  
FOOT STEPS  
HUSTLING.

LONG  
LARGE  
HIGH  
Wide  
deep  
Hollowed

AI BREAK  
FEEL EXCITED,  
IN A JAZZ PLACE  
AOL AND LIKE GROUNDS  
CENTRAL

SQUARED

DEEP

THICK

ENCUMBERED

S-4

Wide

BULKY S-4

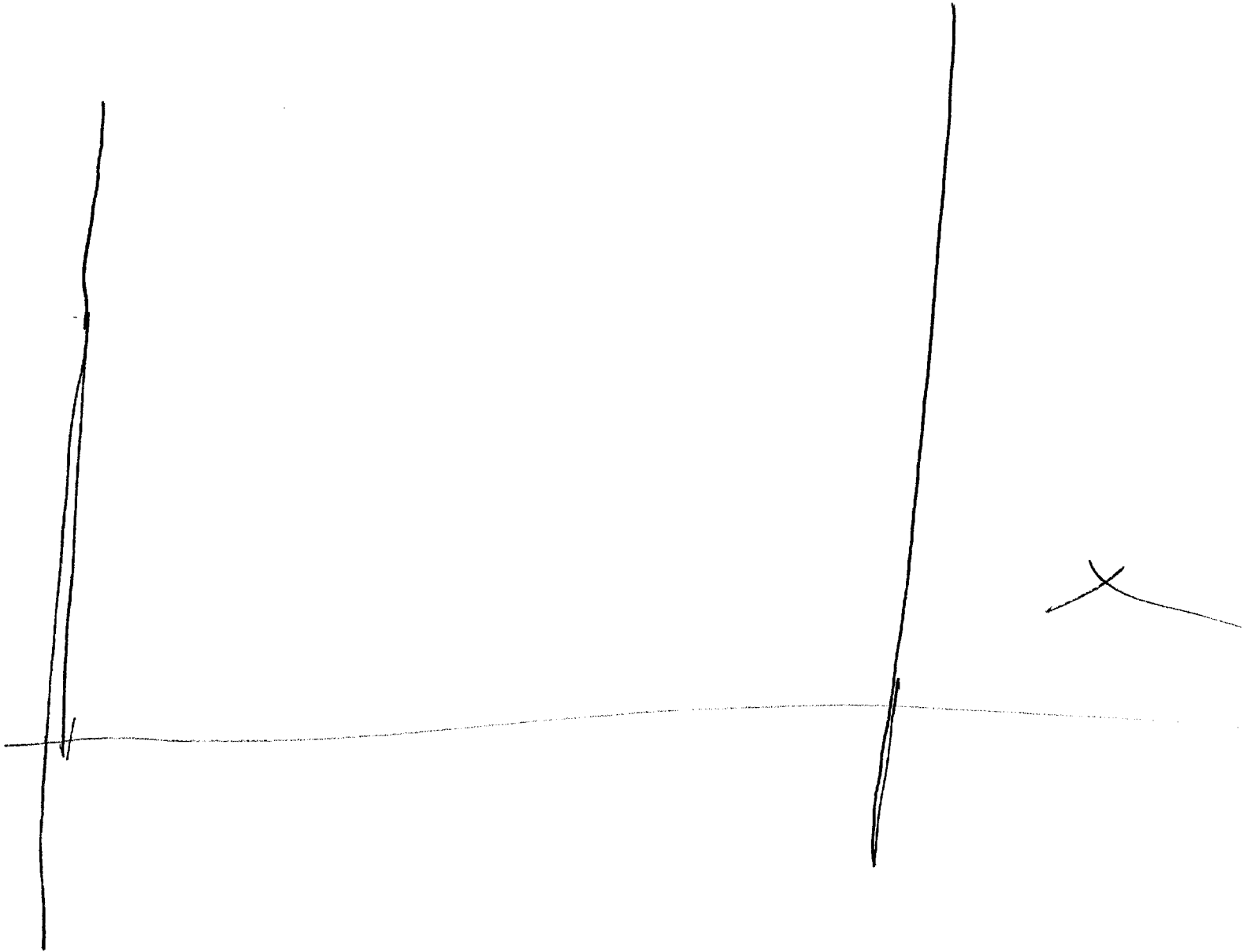
AI BREAK

A LITTLE

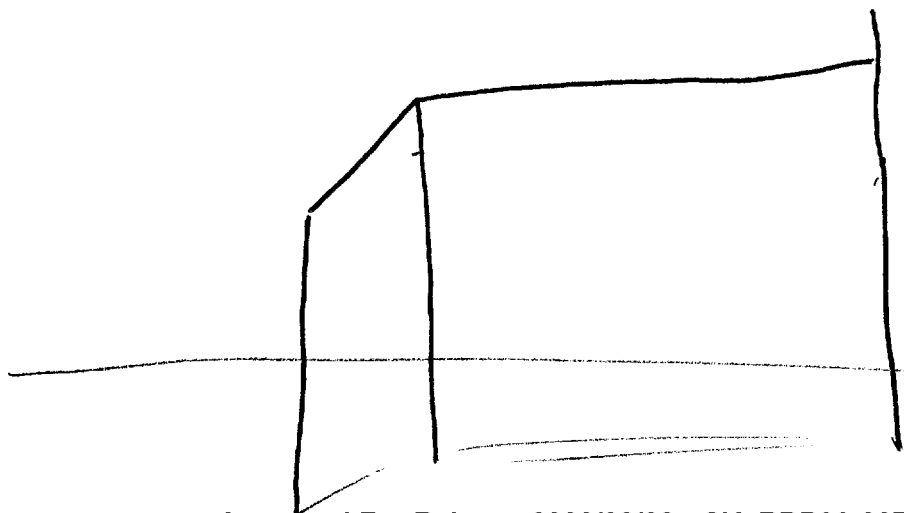
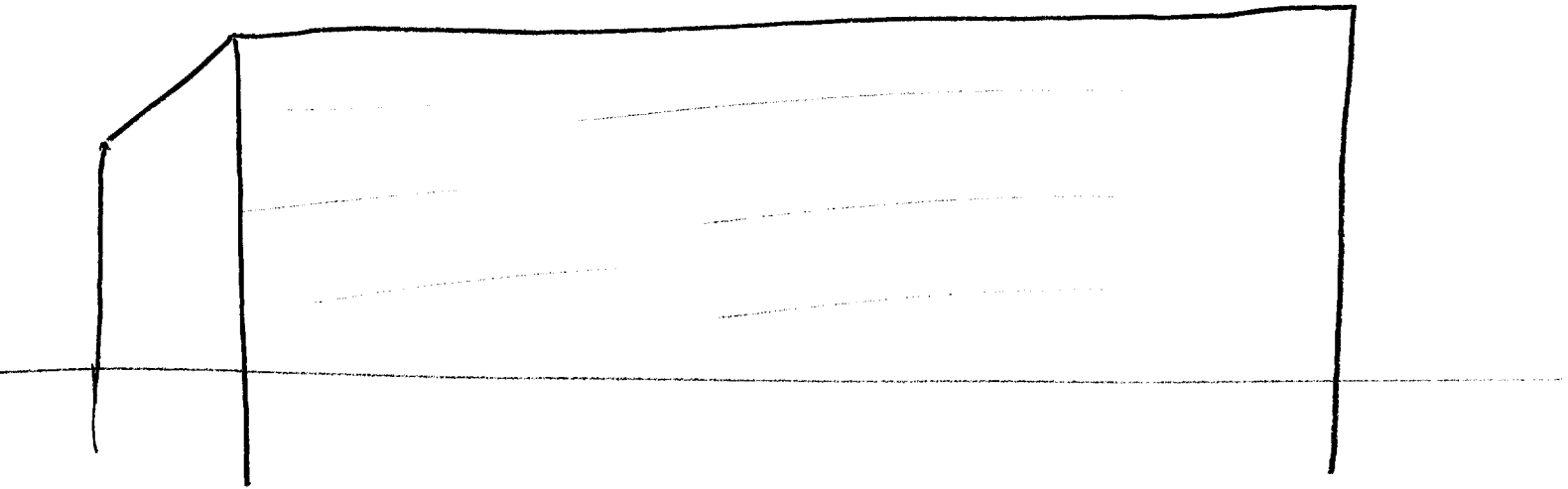
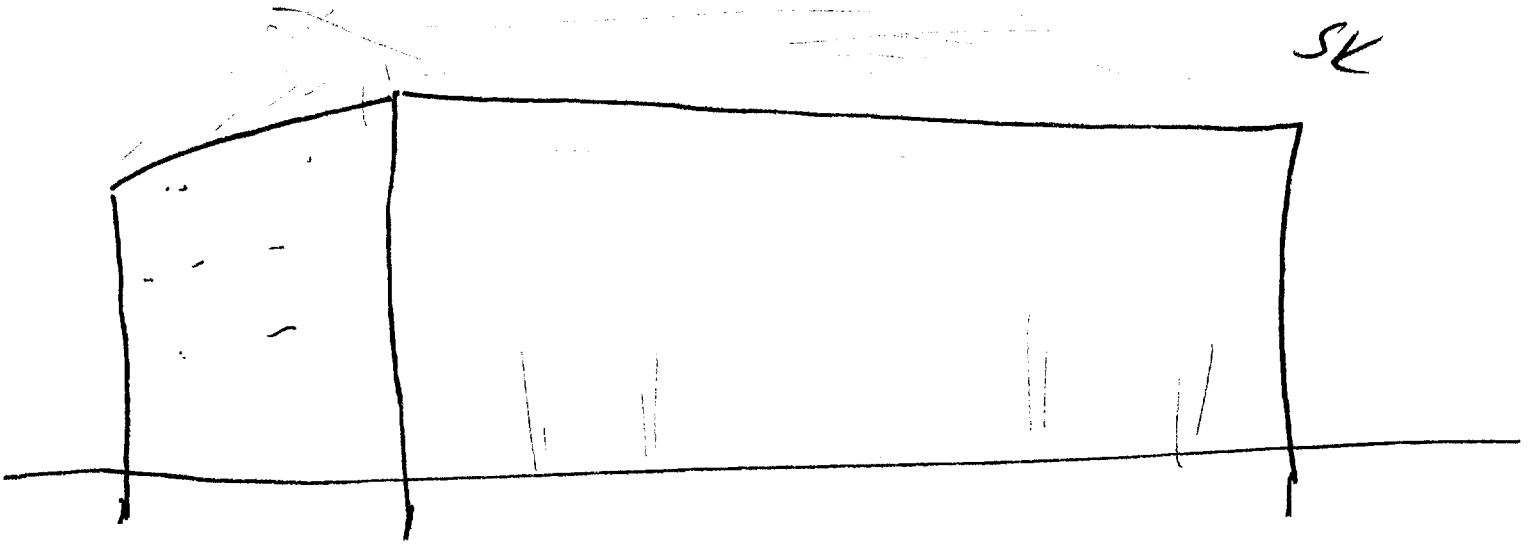
dizzy. LITTLE

NASAUSE

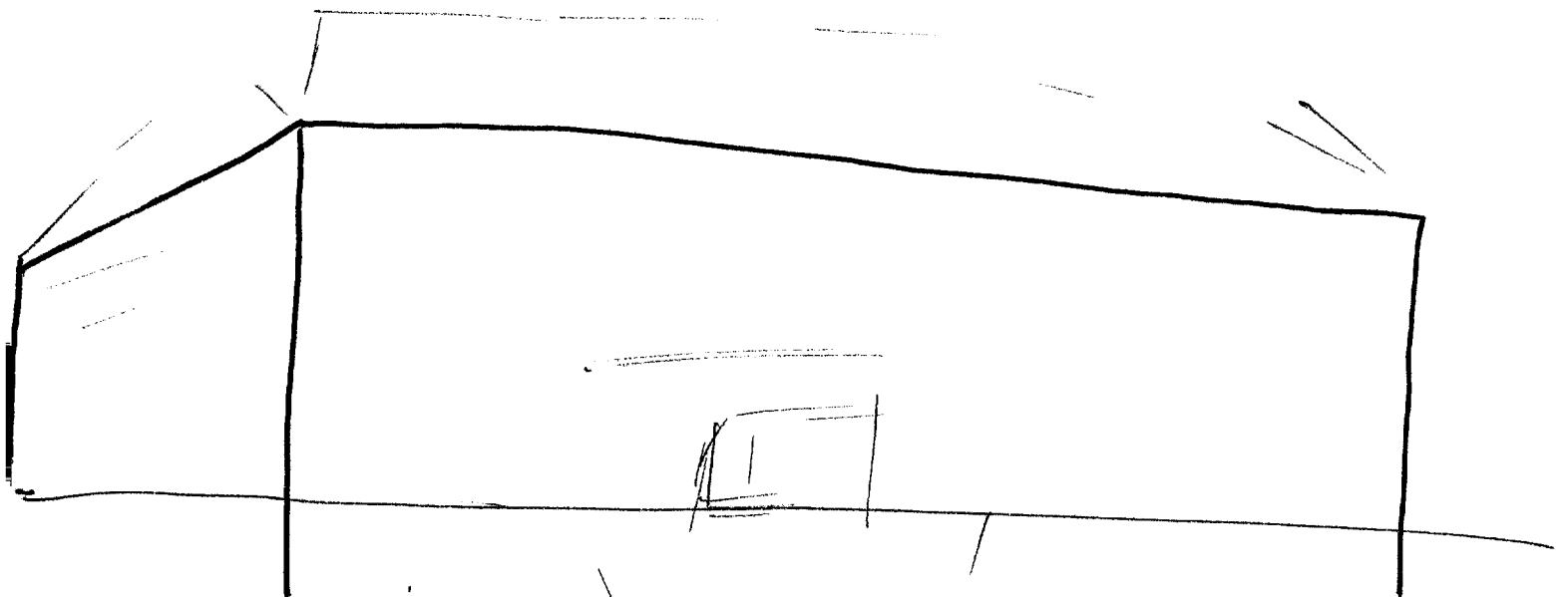




SK



SK



S2

D

AI

EI

T

I

AOL

A/S

BLACK  
BROWN  
GRAVELLY

LARGE  
LONG  
LOW  
HIGH  
DEEP  
HEAVY

AS BREAK  
SOMBER  
SOME WITH  
FORRODING.

STRUCTURE



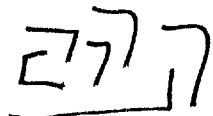
AOL BREAK  
TUNNEL

ARCWAY



SK

MAZE

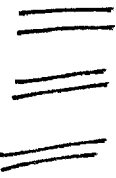


SK

STONE  
WOOD

FLOORS

SK



SEVERAL

AOL BREAK  
STUDIO

S2

13

AOL

A/S

People

BUZY

SERIOUS  
LEARNED

JOUSTLING,  
MASS.

AOL BREAK  
BUSTLING, LIKE  
A TRAIN STATION

INSIDE LARGE Building  
AT THE PRESENT TIME  
PURPOSE SHOULD BE  
VISIBLE

A up  
hand  
Man made  
since  
A part of structure

Brown

quieter

PURPOSE

PEOPLE

Somber

MAN +  
WOMEN

LEARNING  
IN A WAY

DARK HAIR

YOUNG TO Middle-Aged

PROFESSIONAL

CHARTING


SZ

14  
ALC  
AOL

LIGHT BROWN CLOTHING  
WHITE CLOTHING.

FEWER  
PEOPLE

ERNEST  
CURIOUS  
OPEN  
OPEN MINDED  
FERTILE  
CLOSED GROUP

TABLE SK  


WORKERS  
IN A WAY  
NOT RECALL  
WORKING  
CLASS

BANK  
DATA

analyzing

BOOKS

SK  


CONTROL  
OF A  
SORT

MANIPULATING

SELF INTEREST

SPOOLS

SK



GLASS

I

ANALYTICS  
COMMUNICATION IN A  
WAY

DRIVING

POPULATION

S2

AOL IS  
AKS

OFFICE

Divided  
DIFFERENT FUNCTIONS

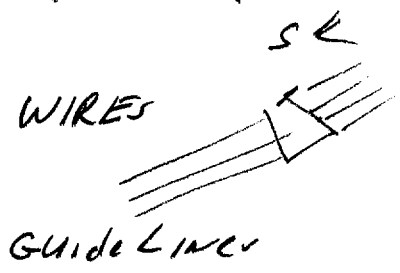
Like  
Young Turks

secluded  
secure  
COMPROMISED

SECTIONED

HUMMING SOUND

Academic  
in a  
Remote way



TANGLED

DARK AND LIGHT

GAR

FORESTALLED  
DELINQUENT  
HARMONY

INSIDE THE Building  
The answer to the  
question is visible  
BRUNN  
WHITE

52

AIL 16  
AL

MACHINE  
GEAR  
DIAL

AIL PART  
PULLING GUN

PRELUDE  
PARTAKING

PREVIOUS

POLITICAL  
SOLUTION

GROUP MEETING

DECISION  
OUTCOME

COMMITTEE

GUIDANCE  
HANDLING

XONIPILARIC

GROUP  
DATA

DISCUSSION

SOME FEAR

DECISION

FINAL

AUTHORIZATION

PRESENTATION

SUB-GROUPS

SUB-INTERESTS

JOCKYING



S2

AI EI T I

AIL

ALS

STARS  
DESIGNS  
AGENDAS  
PROGRESS  
METAL

LOCHS  
CHAMBERS DIVERGING  
~~DI~~  
MOVEMENT  
OBJECT

SMALL

WOOD TABLE  
PLATFORM  
METAL APPARATUS

People

AGL Break  
SIBERIA

sub-classes  
i  
PROJECTIONS  
BOTTOM-LINE

Diveded

DEBT

AGL Break  
DEBATABLE

52

BOX  
OBJECTS  
DESIGNS

COMPUTOR DATA  
POPULATION FIGURES  
PROJECTIONS

P.

VERY BUSY LIKE  
AS BREAK  
I FEEL SURPRISED  
BY THEM AND UPSET  
BY THEM

PHO  
PLOTTING  
PLANING  
HEAVY

HOMO STASSIS  
HOMO GENUS  
HOMO PATHEC

GUIDING

GROWING  
CHANGING  
ALTERING

PLAN



LONG RANGE  
IMMEDIATE  
AGREED UPON

SMALL DISSENTS  
ACTION

TANGIBLE EFFECTS ON  
ACTIVITY ARE IN BOX  
AND VISIBLE

AOL BREAK  
EN SOME STRANGE-  
WAY COUNT  
RELATIQ

SZ  
Gold

ALTERATION  
FABRIC rendered

People  
STEREOTYPES

CONTROLLED

DINOSTIC

LUCIFER

AI BREAK  
DISGUSTED,  
UNBELIEVING

CHILDREN

AI BREAK  
ABANDONED

LONG RANGE

DEVELOPING  
SINISTER

CALM, COOL  
LOGICAL

PROBLEM SOLVING  
ADJUSTING

ALTERATION.  
SOCIETAL CHANGE

SIDE EFFECTS

GUARDED

GUARDED

CHANGING AROUND

METHODS  
IN THE ARC visible  
BOX

AOL BREAK  
GENETICS.

LATHOUR  
LARGEN SEE  
SEPERATION

SQ

AOL

20  
ALS

SPREADING

MONITOR

AI BREAK  
UNCOMFORTABLE  
SKEPTIC

EASTWARD

TUBES  
RATS  
INSECTS

AI BREAK  
SKIN CRAWLING

LICE  
MANURE  
FOOD

AOL BREAK  
CHEMICALS

PLANNING  
STEERING COMMITTEE  
CENTRAL CONTROL

ULTIMATE OBJECTIVE  
IS VISIBLE IN BOX

INFEST

HOMOSTASIS  
BALANCE  
COMPLACENCY

AOL (G) CONVERSION

CODED  
CONV

SHIFTING

CONVERSION

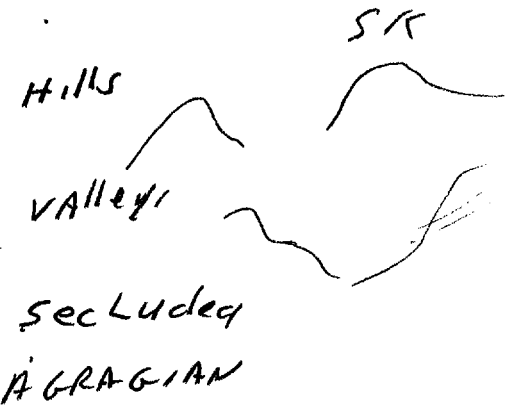
NEW BALANCE

EFFECT LOCATION  
IS DESCRIBABLE

SZ  
WARM  
HUMID  
GREEN

ROLLING  
SHIFTING

COOL



SecLuded

COOL

FEELING OF  
ASIATIC

BORDER  
BOUNDED

ROUGH TERRAIN  
SOLUTION  
DELIVERABLE

LEAN

DARK SKINS  
STURDY PEOPLE  
LOOSE CLOTHES  
LEL

DIA PHYTIC  
DIA PHINE

PI ITCH

EFFECTIVE SHOULD BE  
PERCEIVABLE

52

AOL

22  
AL

WARM

VAGUE

CLANDESTINE

Trouble  
DIS-ORIENTATION

SICK  
ANIMALS

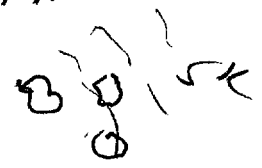
AOL BREAK  
RUSHING BLOOD,  
CONFUSION.

LIVER  
SECRETIONS  
TIRED.

AI BREAK  
DISORIENTATED

DIPHTHERIA  
MILKY SUBSTANCE

DRIED EARTH



LEAFLESS

AOL BREAK  
WORMLESS

HORGE-Podge  
PRY  
ALONE

SHIFTING

RELOCATION  
SHINING

23  
AOL SIGNAL  
LUCIFER  
PROOR EMMANATIONS?

DIABOLOCAL  
UNFEELING  
WICKED  
PLOTING  
LIEING  
DIVERGING  
CONFIRMING  
DYING  
ON GOING  
DEMONIC  
DREADFUL  
PIRE

Approved For Release 2000/08/08 : CIA-RDP96-00789R000100130006-1

SITE IS A SINGLE BUILDING SET II  
AMONG A SERIES OF OTHER  
STRUCTURES. IT IS ON FLAT  
LAND. PRIMARY COLORS ARE BROWN  
AND BLACK. WITH SOME GREEN, BLUE AND  
ORANGE. THERE IS A METALIC TASTE  
AND A CLEAN, STERILE TASTE. THERE  
ARE PEOPLE NOISES, SHUFFLING, SLIDING  
FOOTSTEPS AND HUSTLING (WFS) SOUNDS.  
AREA IS DAMP AT PRESENT. BUILDING  
ITSELF IS LARGE, LONG, HIGH AND  
WIDE. IT HAS A DEEP QUALITY, PROBABLY  
INDICATING AN UNDERGROUND  
COMPONENT.

INSIDE THIS LARGE BUILDING THERE  
ARE PEOPLE WHO APPEAR TO BE YOUNG  
TO MIDDLE-AGED (PERHAPS 28 TO LATE 50).  
~~THE~~ THERE ARE COMMITTEES OR GROUPS AND SUB-  
GROUPS WHICH ARE CONCERNED WITH NUMEROUS  
TOPICS. (DESIGNS, STARS, POPULATION, POLITICS,  
PROGRESS) GROUPS ARE VERY PROFESSIONAL, COLD  
AND BUSINESS LIKE. PEOPLE HERE HAVE AN  
ALMOST ACADEMIC FEELING, BUT IN A STRANGE  
WAY. PLANS HAVE BEEN MADE IN PAST  
WHICH ARE INTENDED TO EFFECT THE  
FUTURE (PRESENT IS LEAST REAL HERE)



OVER ALL PLANS SEEM TO BE TO 11A

Approved For Release 2000/08/08 : CIA-RDP96-00789R000100130006-1

ACHIEVE HOMOSTASIS, AND BALANCE (FROM  
THEIR VIEW POINT) THRY ADJUSTMENT AND  
ALTERATION. THERE MAY BE SEVERAL  
INTER-CONNECTED ACTIONS PURPOSED TO  
DO THIS

5