

PROJECT: 8609  
 DATE: 19 NOV 86  
 SESSION: 82  
 SOURCE: 101

START: 0814  
 SANCTUARY: 0828  
 TARGET: 0830  
 FINISH: 0916

SG1A

COORDINATE: 

05<sup>2</sup>  
/

## FRONTLOAD:

"THIS IS A REVISIT TO THE cleared area discussed before. IT contains several referenced gestalts. You need to know that accuracy in these initial sessions IS secondary to the need to become acquainted with the general impressions. We will move to the doorknobs later."

14 minutes to Sanctuary - Perhaps used to workout nausea. Normal time 7-8 minutes  
 NOTE: Very good HNG voice

## NOTES:

- ① No stated or known inclemencies.
- ② UPbeat with receipt of orders.
- ③ A little nausea from a large breakfast.

DRAFT: \_\_\_\_\_

TYPING: \_\_\_\_\_

PROOF: \_\_\_\_\_

CORRECT: \_\_\_\_\_

OPS: \_\_\_\_\_

This document is made available through the declassification efforts  
and research of John Greenewald, Jr., creator of:

# The Black Vault



The Black Vault is the largest online Freedom of Information Act (FOIA)  
document clearinghouse in the world. The research efforts here are  
responsible for the declassification of hundreds of thousands of pages  
released by the U.S. Government & Military.

**Discover the Truth** at: <http://www.theblackvault.com>

Page 2

SG1A

→



★ Cleared area, area separated, partitioned off, fenced off from outside area. moving around... (HARD SNEEZE-ENTschuldigung)  
 AREA FLATTER THAN PREVIOUSLY Reported - mound, raised part. Natural material, grass, circular,

→ Stay with The mound

★ IT RISES UP, ITS CIRCULAR large, protected, deep, environmental

→ Environmental

★ I don't know why I said that. maybe separate environment

→ Protected

★ Reinforced, guarded, camouflaged, cool

→ connected

★ subterranean link, situated, (not exact word), expand, reinforced, circular within a circle, shaft, challenged. its, fixated, its domed, ramps, rails, its central. large (Hugh comes to mind).

→ move away from dome

★ moving around site. overall is agricultural area. FEELING of good soil, adequate water.

→ The site itself.

★ Separated, fenced in in away (not sure of fence),

→ move to the dome, perceive the area around the dome. describe your perceptions

Page 3

- ★ around the dome, some type of covering over the dome. Hard, maybe cart on ramp.
- on your own - Perceive outwards from the dome in clockwise perception - describe your perception.
- ★ 1200 - Dividing line - cleared - trees, about 1:00 cleared area into forested area - large bowl - convex - 1:50 - part cleared area, small road, hard top maybe dirt in some spots, 7:00 at a great distance - city - next to water 9:00 other city - closer than other city. also built on River - maybe same river. - 10:00/11:00 open fields - agricultural area.
- That brings you back
- ★ I don't see the tower or any other structures.
- Focus on the bowl
- ★ 1500 - forested area, metallic, open faced - next to it a metallic structure like a tower, above the trees. People on structure, above ground, outside
- Activity
- ★ People wearing coats, almost like ski jackets - structure is wide - outside/inside. Purpose is maintenance, monitoring, switching, channels, beams, links. switches
- Describe the people
- ★ Light skin, caucasian, they're dressed warmly, ski jackets, woolen hats, no snow, trees still green but it's brisk, generalities - I don't get a military feeling here. outdoor types maybe Aol from jackets, almost Nordic. People in shape;
- The large bowl

Page 4

★ down away from this tower. appears to be more open now than before. I'm getting snow now (maybe an AOL). Large connected, with tower, I believe. Some men at bottom, outside, they should be at tower. Bowl is adjunct to tower.

→ Describe your perceptions of the tower and the bowl when in use

★ In use, its monitoring, sending, receiving, they're stages/phases of use its always at some phase of use. Like an engine on car running but sometimes at different speeds. connected to something else. Bowl connected to tower, tower connected to site. The bowl/tower may have more than just site to ~~serve~~

→ The connection between the tower/Bowl and site, describe -

★ Getting an impression of like flood lights directing lights to the site (cleared area). Information is relayed to site. Data support (term).

→ Follow the connection and move to the site. describe your position

★ I'm inside something - dark and ~~lit~~ lit. Electronic machines, lights, colors, people, men, uniforms.

→ Perceive the area and describe it to me

★ Area dominated by machines along walls, screens, lights, whirring, a lot of talk, a lot of passage and storage of information. a lot of mathematics/geometry here, a lot of the uniforms are short sleeve. Area crowded by machines and people. lights/air artificial. Steady hum of activity Banks of things. Screen with angles for adjusting to intersecting arches.

→ Pause for a moment - move away from this area to the dome - now move into the dome - describe your perceptions

Page 5

★ Wide and dark, moving down. open not as I thought it would be. goes down. goes down quite aways. There are levels.

→ Describe to me the concept of levels

★ Floors, as you go down - goes off - floors with people working - opposite sides of a central shaft.

→ Continue to describe the area

★ Large shaft center - Large pipes running around

→ Pipes

★ Look like - pipe line pipes, very thick - in the open - at least two different pipes -

→ Place yourself in close proximity to the pipes & describe the same

★ ~~describe the sound~~ a feeling of temperature differences. There are two types of pipes. Pipe lines - then 3 smaller ones side by side. I don't ~~don't~~ know if they have anything in common

→ Describe the activities on these floors.

★ I'll describe them in some kind of order - Housekeeping, administration, monitoring/tracking/adjusting (all one), keep track of relative positions, plot relative positions, whole area is artificially lit/artificially aired. areas are reinforced. The entire area has been here for awhile. other areas are new - remodeled, improved. state of the art -

→ The electronics area - continue to describe it -

★ Set back, lights, do-dads, screens, cables, more screens there's double line here; supervision. People at screens, people moving behind checking - take a TC situation - down another line. of checkers. Goes against grain but have feeling that

Page 4.

\* important than people, not a large area for human error

\* Describe relative position of electronics room to central shaft

\* Its back from shaft near house keeping area and admin area. its in - Had some problems going inside for a minute, its kinda of hub of activity.

PO

PO

||

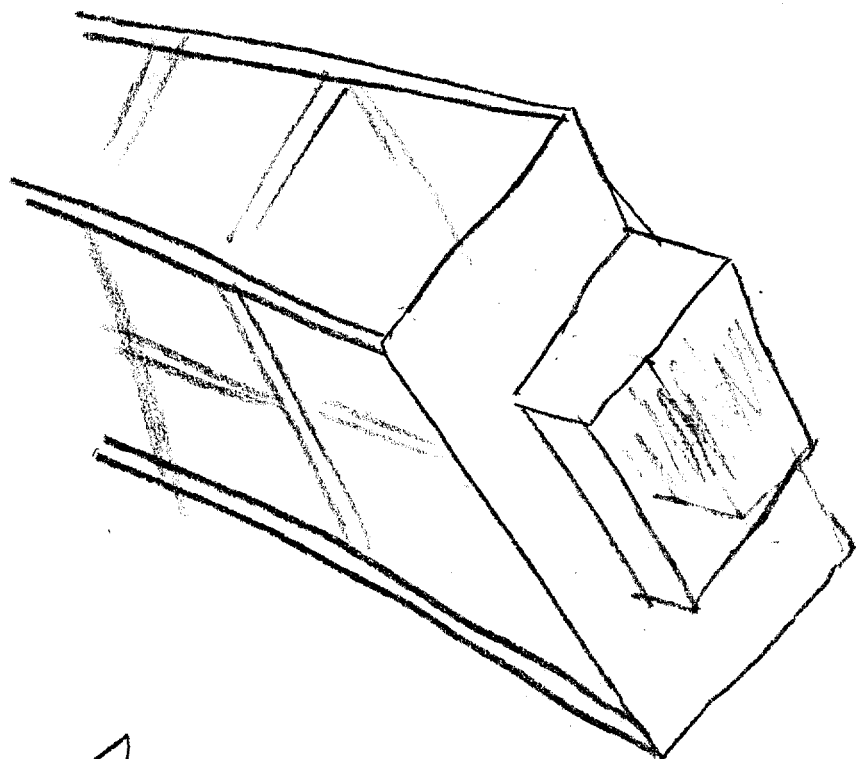
□



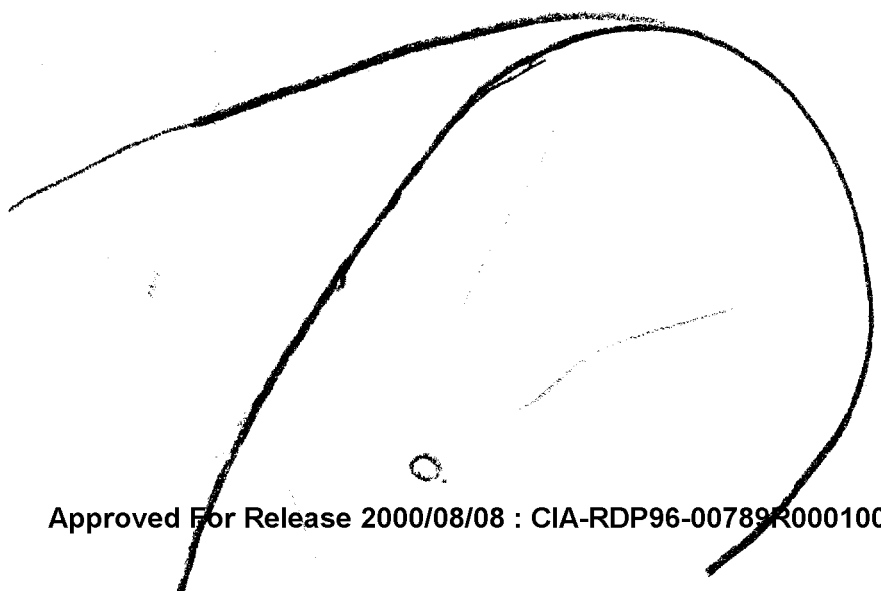
FAMU

PO





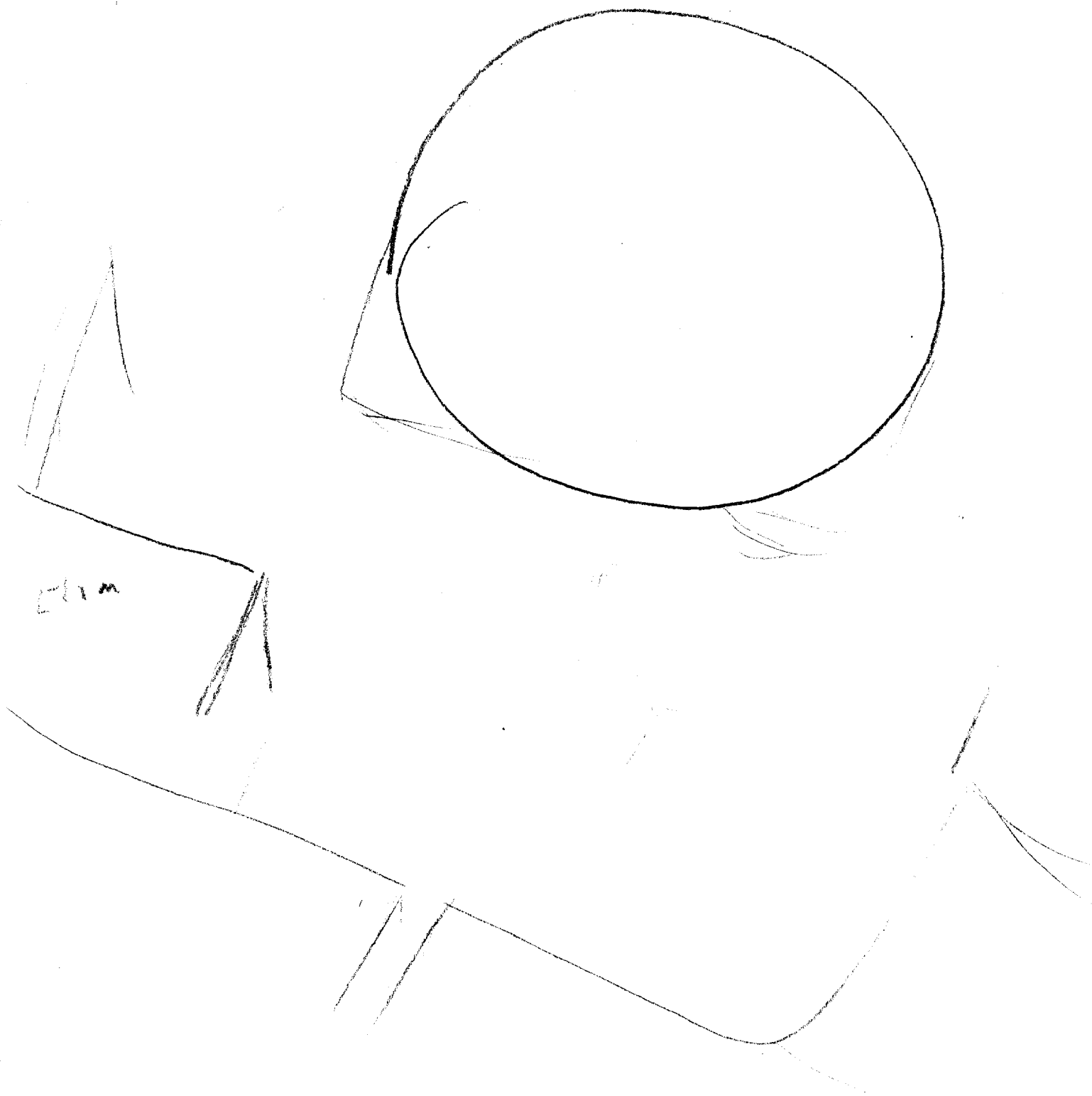
↔  
DISTANCE

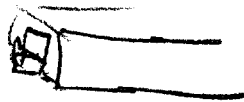
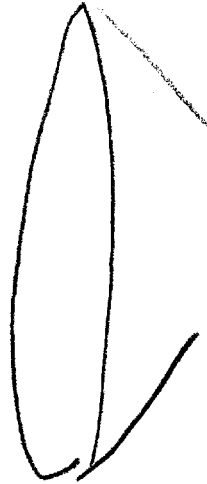


Elec

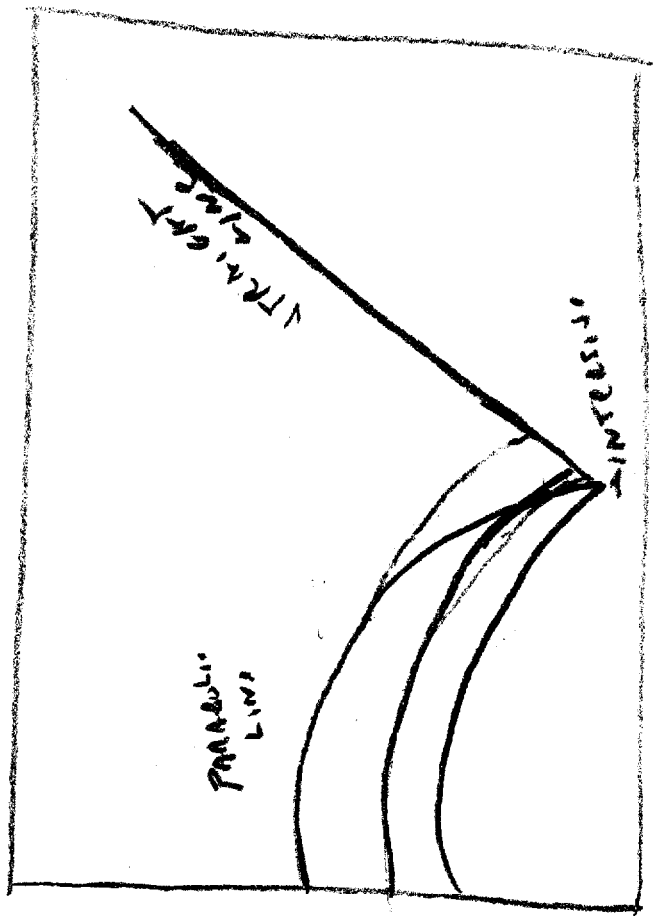
ADMIR

HAS  
REPAIR

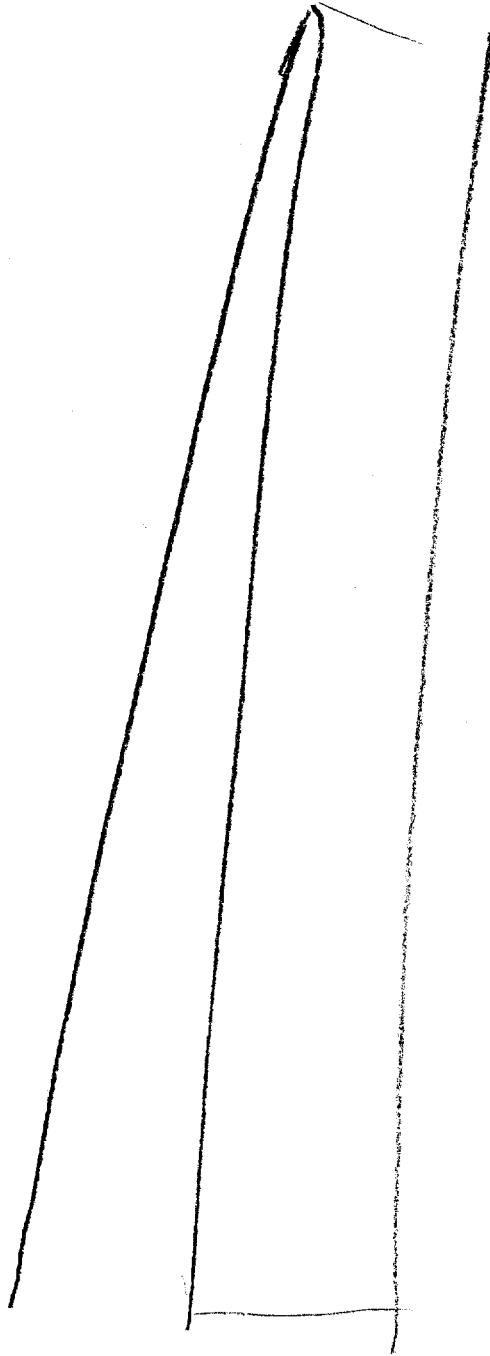


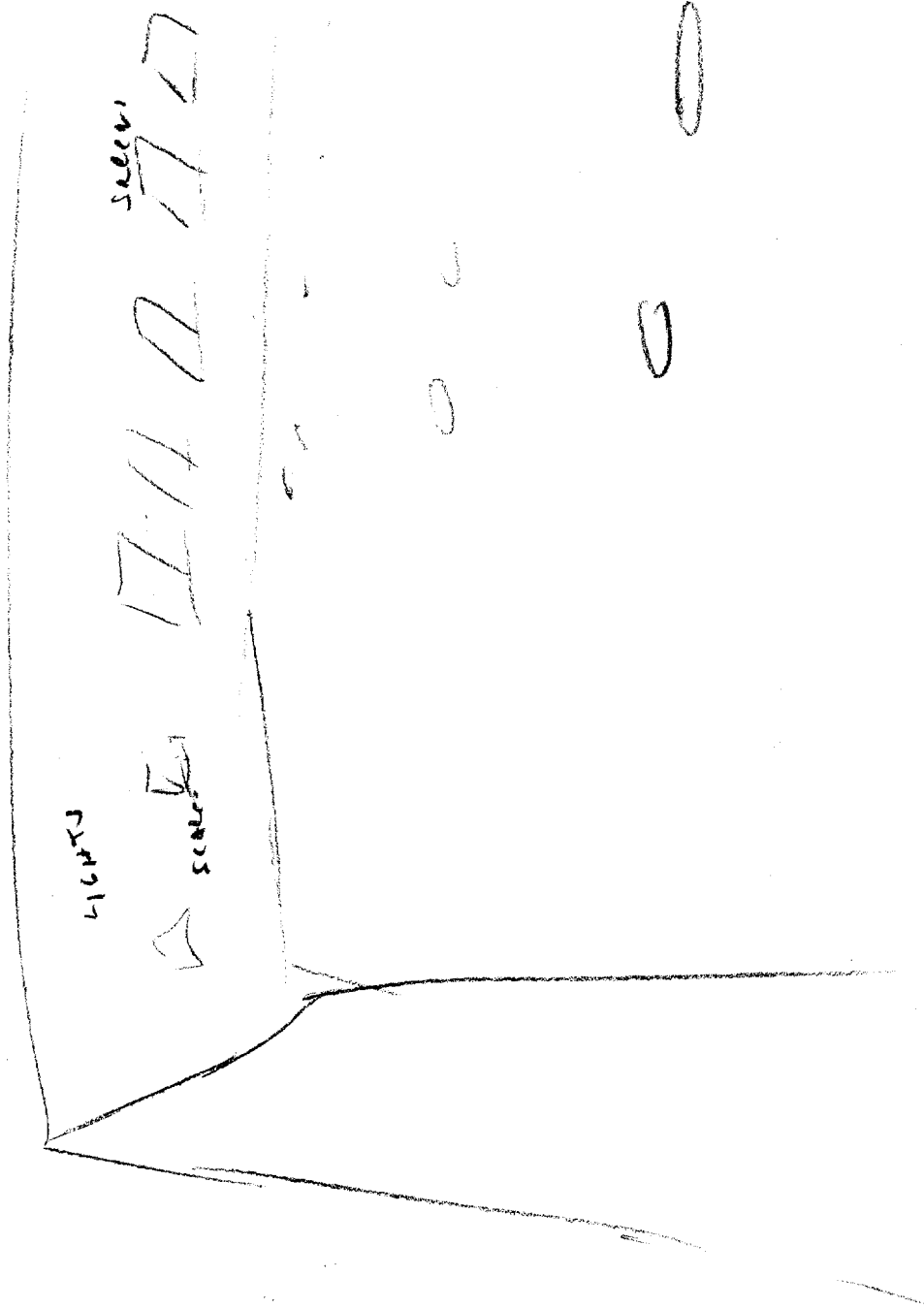


Screen

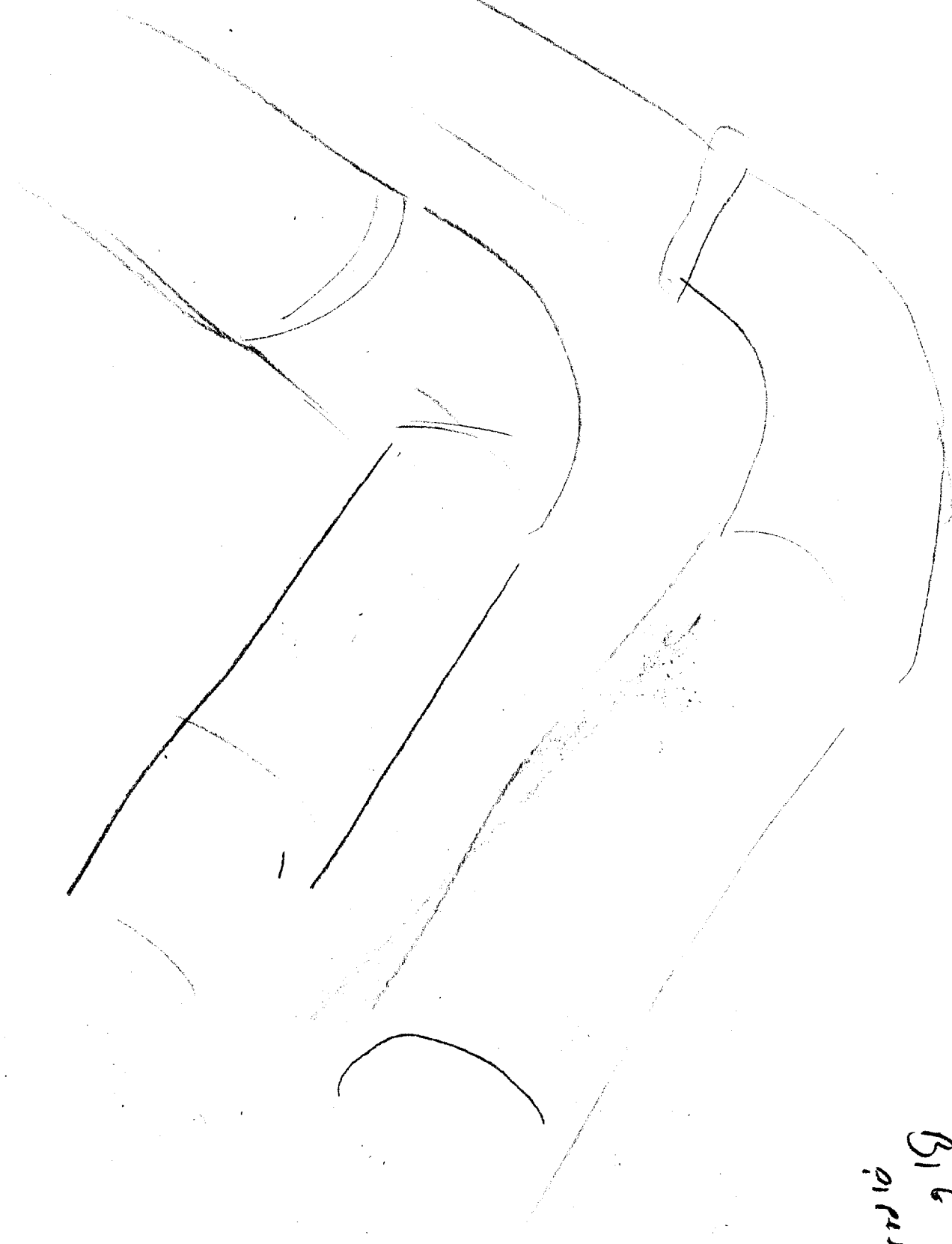






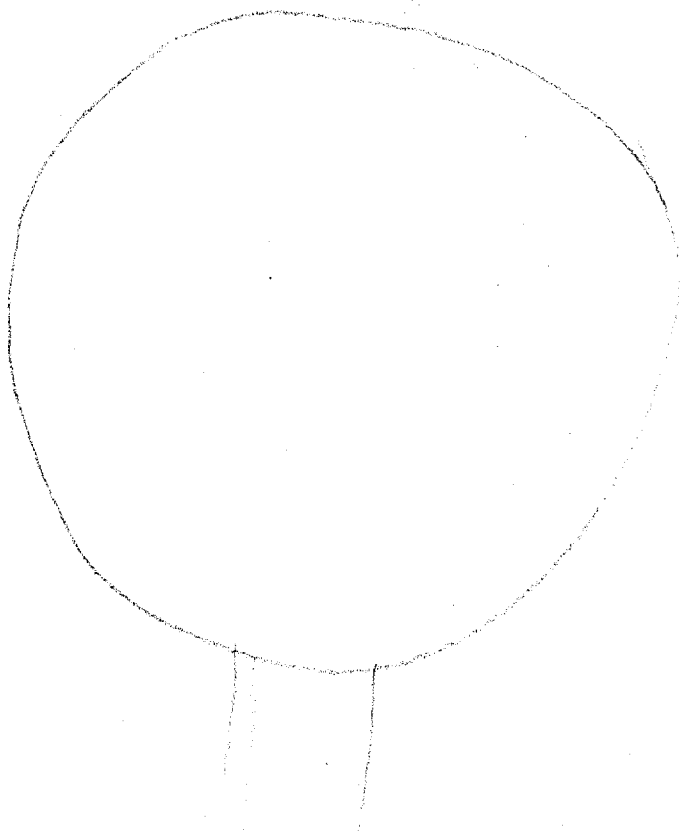






B16  
01/21/11





✓ CL/DIA/D  
ALIX

