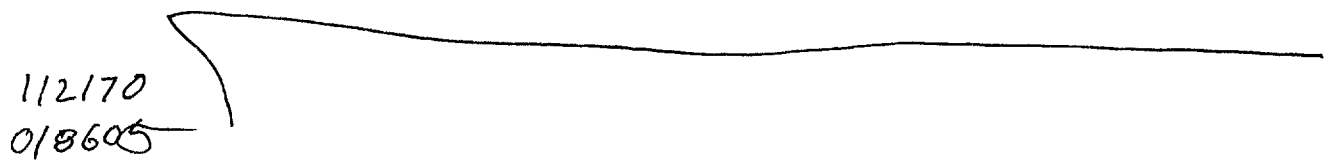


PIs - none
A.V.S - none

SG1J

29 SEP 87

1000 hrs



It vertical up.
 angle across flat
 across
 hard
 R structure

This document is made available through the declassification efforts
and research of John Greenewald, Jr., creator of:

The Black Vault



The Black Vault is the largest online Freedom of Information Act (FOIA)
document clearinghouse in the world. The research efforts here are
responsible for the declassification of hundreds of thousands of pages
released by the U.S. Government & Military.

Discover the Truth at: <http://www.theblackvault.com>

112170
018605



a. across angle
up, curving over
curving around

b. structure

112170
018605



a. across
angle up, angle
cross
hand
structure

a. incline down
incline up
b. hand

112170
019605



to across, angle up
angle across
host

h. structure

S-2?

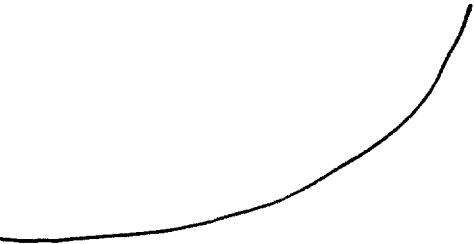
hard
smooth
textured
dark

112170
018605

to cross, angled.
hard
to structure

S-2?
dark colors
dark/dirty gray
dirty
sassy
dirty
vertical
tall

112170
018606



↓ curving up
hard

B. structure

S-2
smooth
hard
metallic
curving
silver color
curving up

112170
018600

k. across, flat
hard

b. ~~structure~~

S-2?
hard
flat
dark
black
blue-black
Smooth

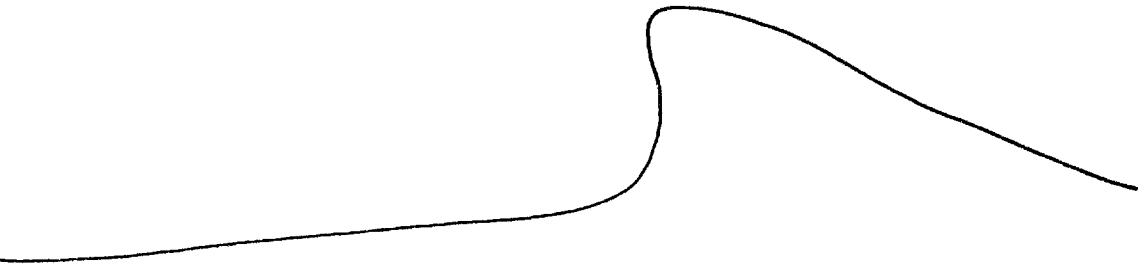
ASL
like bakelite
or hard plastic

112170
013605



to cross, flat, incline
up, incline down
soft
Blond

112170
018605



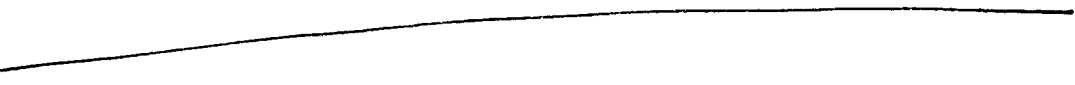
Loops, among
exp. angle across
incline down

part

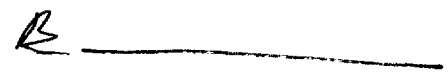
b. _____

confusion's break

112170
018606



p. flat, across
hard

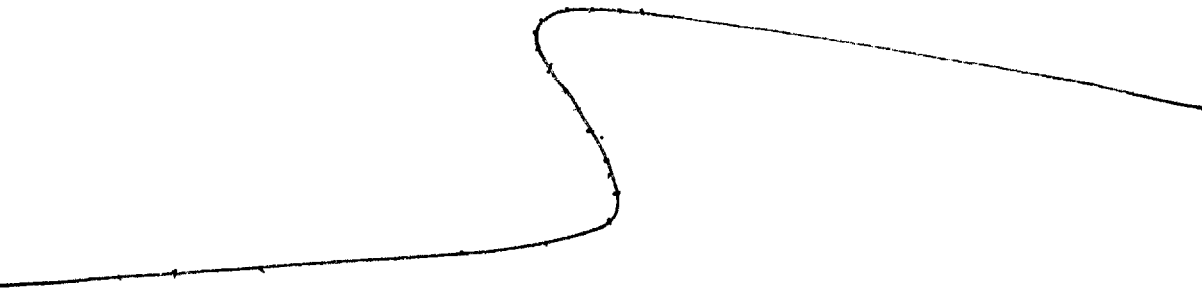


break/break

AOL break!

large river,
city complex —
AOL MOSCOW
or Leningrad

112 170
018605



A. across angle up,
angle across
hard
B. structure

S-2?

AI Break
makes me feel blah!
and uninterested

S-2

D

AI

EL

T

I

AOL

ALS

12.

vertical

building

angles

square

brick & mortar

plain
uninteresting

flat

boring

quiet

empty

people

bored

dudgery

repetitive

4's - people something over and over, repetition
people are bored stiff!

dull
dirty

sooty
filthy

reddish
reddish brown

square
rectangle

building

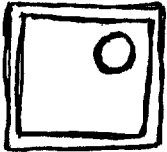
empty

Doc inert
like a large
old warehouse

black
gray

square

building



tall
vertical

tower-like

AOL break

like tower
structure with
something
electronics on it
like a radar or
microwave

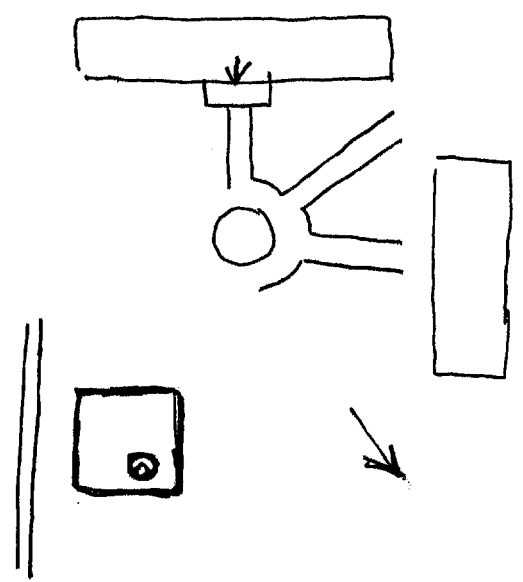
S-2

D Approved For Release 2002/05/17 : CIA-RDP96-00789R000100510012-2

AOL

ALS

4 1/2 - immediately ran into a brick wall, feeling however there is an open side - that opens into ^{AOL} something like a courtyard.



ENTRANCE?

4 1/2 - being drawn in two directions - also two different concepts of entrance

break!

END

1058hrs