

Project CY 8609

Task

1. Describe the Technical Facility located vic:

SG1A



2. Within the following ten year period determine if and when any "special events" occur:



* Note: If you do find any "special events" - - - subsequent sessions will be focused on each separate "special event."

This document is made available through the declassification efforts
and research of John Greenewald, Jr., creator of:

The Black Vault



The Black Vault is the largest online Freedom of Information Act (FOIA)
document clearinghouse in the world. The research efforts here are
responsible for the declassification of hundreds of thousands of pages
released by the U.S. Government & Military.

Discover the Truth at: <http://www.theblackvault.com>

STAGE 6 WORKSHEET

SOURCE:	003
MISSION NUMBER:	8609
SITE:	██████████ SG1A
TARGET:	<u>SIGNIFICANT EVENTS (IF ANY)</u>



██
██
██
██
██
██
██
██
██
██
██
██

Handwritten:
Must be
Done that
it's not to be
from now. And caution
must be taken to prevent
too great a system of the
as to drive attention so
it from outside who
the people involved don't
want to know about
the whole project.

SG1J

2
3 Feb 86
Fr. Meade, W.D.

SG1J

1039

D A2 F2 T I A2 ALS

52
Brown
smooth

curves

rough
hard

solid

Cold
white

AsL Blc
curves
smooth
walkway
multipass at
BYU

structure

large

5 legs

round
flat

fewer

green

people

yellow
metallic
color

4 1/2 many other elements

SUI

3

S2

D

A2

EI

T

I

ALL

AS

translucent
rules
color

A2 Bb
keep, initials
suit istyng
color

leaves
yellow

Structure



slipping

walk
open

d.m

nowhere

ADD

banes
landscape
black

mass
structures

figures
militar
government
official civilian

S U I

4

Sz

D

AZ

EI

T

I

AOL

As

aircraft ready

54 1/2 part of site is concerned with "industrial plant" like any large institution has for sppt. Larger than normal "i.p." establishment to compensate for environmental conditions or to cater.

Expensive type missiles present

- rush
- slight stinging smell
- red
- rough with
- red
- smooth
- honey's smell
- Product lignite
- amber
- red
- green
- shiny

Large structure

54 1/2 ... at a consistent level + expected ... Very active, but any crisis events ... within expected limits of expected types.

SVI

5

S2

D

AJ

EI

T

I

ABL

AB

powder blue

person

in charge

frustrated

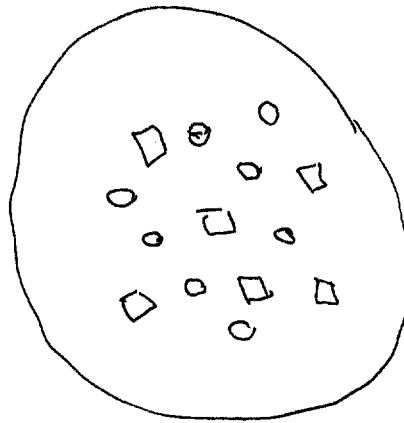
5 4/2 frustrated not because he's being harassed but because things aren't happening at the rate he wants. But he's the type that is long on drive + ambition but short on patience, + even if things happened even faster, it would never be fast enough. "Things" involve other people performing well but interlocking sundries with a finite and concrete conclusion to finally be reached.

white
green
hard
smooth
sharp

small
curved
rounded
thin
solid
hollow
springy
flexible

peeps
objects

components



507

S2

D

A2

F2

T

I

#02

Als

shy

white

clothes

integrity
interlocks

activity

S4 1/2 series of stages or benchmarks in process that must be reached.

sub totals - sub elements are tested

Test phase - checking on a limited operational basis to see if all connections carry the loads expected to provide to the wide interchange of nodes or standby boxes/locations.

Trial
Phase
Objects
emanations?

Trial
Phase
attributes @
attributes?
highly technical
complex
metal
plastic
not
cold
smooth
burnished
blip, duds
heterogeneous
constructive

large
rounded
wired
irregular
shaped
angle
curved
dished
slanted
adjustable
electronic
powerful
black
dangrove
"sounding"
with p. 7th
low p. 7th
steady
clear
shiny
flat
intricate
microengineered
elliptical
chased

Trial
 subject
 emanation?
 evaluator
 Verifier
 Assessment
 Calibration
 manipulation
 Projection
 Power
 "Weapon"
 Effects
 Radiating
 Emanation/Emission
 Demonstration
 Concealing
 Introducing
 Coercing
 Stifling
 Technology
 Physics
 Alternating

Trial phase
 Topics
 emanation?
 controlling
 curiosity
 anticipation
 Justification
 Satisfaction
 Culmination

S2

D

A2

E I

T

I

A2

Als

SU I

SU 1/2 requires high voltage & megawatts - very high levels of power - to accomplish purpose.

Aesthetics totally disregarded in construction - purpose is all consuming in design.

Structure

metal

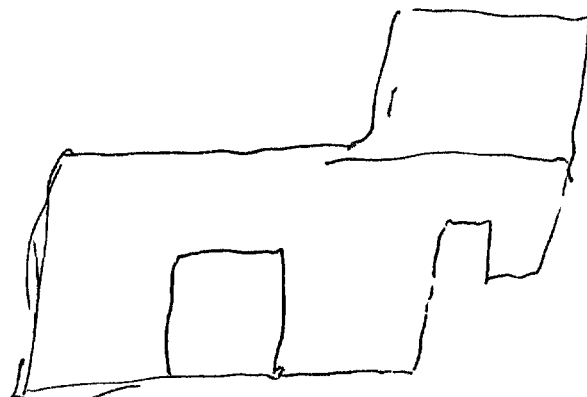
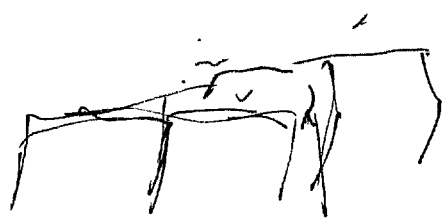
large

solid

masonry, metal

SU 1/2 old part + new part.

irregular



level

lads.
wings

52

D

#2

E1

T

I

AOI

ALS

S VI

betweens

constraints

function

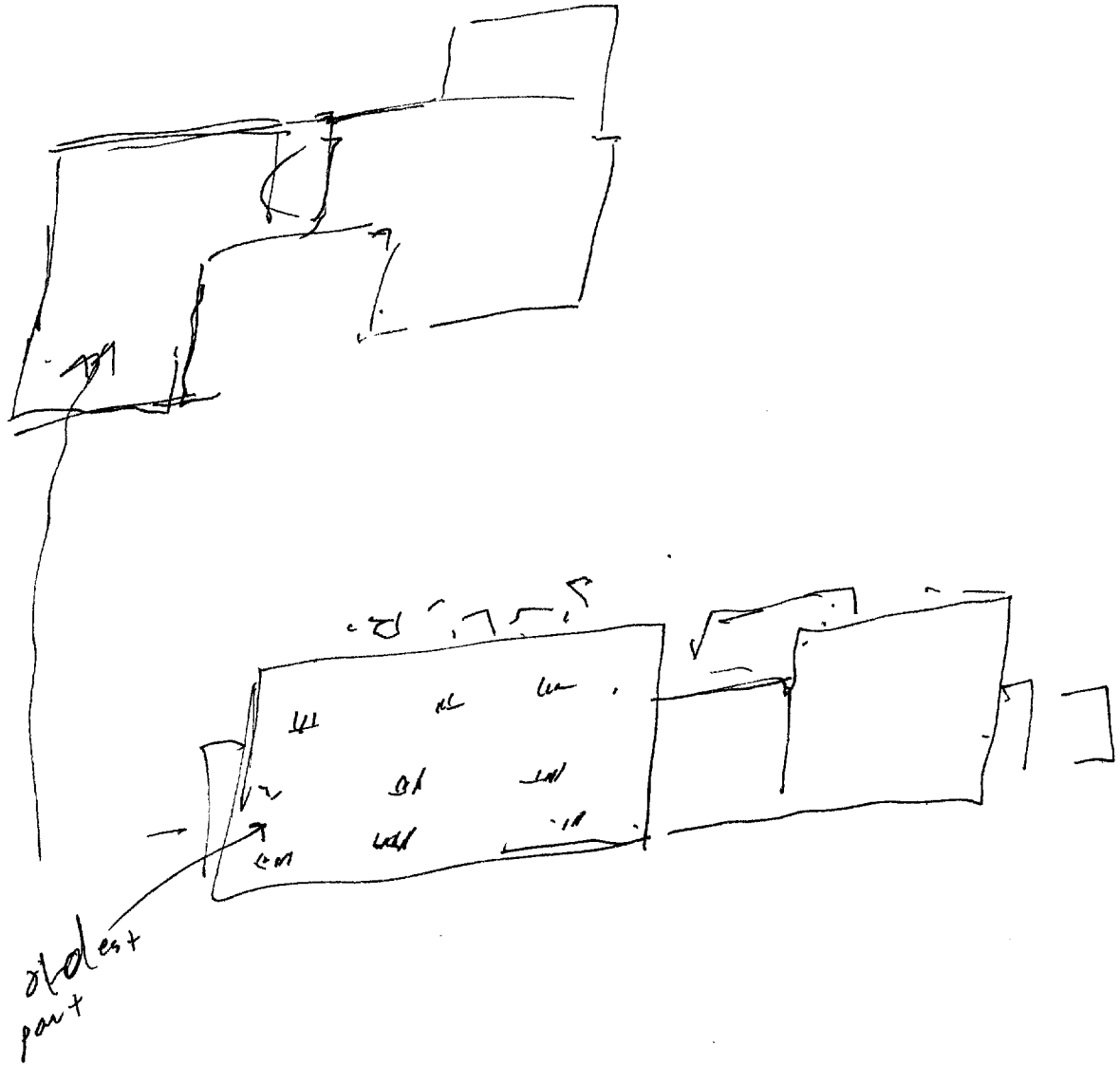
50/2 some parts lower some parts higher (i.e. ^{later} additions to structure). Scientific "theme" to bldg..

possible
Openness
towards
middle-
like a bay,
or courtyard

stuff
on rough
sketch
for various
functions

"like"
microscopy
some of it
interior variations
KF variations

A1 B1c
not a
place I would
like to be
when ^{its} operating



SVI

11

52

AZ

E I

signature

I

AZL

ALS

- "markings"
- "symbols"
- "indicators"
- envelope
- leakage
- odd frequency
- bandwidth
- color spectrum

54 1/2 what analysts & monitoring agencies would
 pick up as far as outside art. letters &
 device generated phenomena.

54 1/2 indicators - relevant/significant people gatherings
 changes in set, patterns, RF scheduling; ^{equipment} interference
 patterns; power shifting; a/cft operation in
 vicinity.

Site

construction + assembly of some actual device or equipment which is new/experimental, dangerous w/ perhaps weapon potentials + ~~high~~ ^{requires} high power levels to accomplish purpose. Sub assembly trials have taken place, + soon in the future will be a major trial "run" of virtually the whole device. It won't be "finished" yet, but all major portions will be ready for interactive/interconnected testing. It involves meticulous construction + miles of wiring engineering. Caution must be taken to avoid too much "signature" density, she best to avoid unwanted outside attention. Device + ~~is~~ ^{is} ~~it~~ ^{it} ~~is~~ ^{is} located in a structure which is part old (masonry) part new (partially metallic) which has a "science theme" about it, it constructed haphazardly, and may have wings + a courtyard or open area associated with the middle part of it.

1154