

Project CY 8609

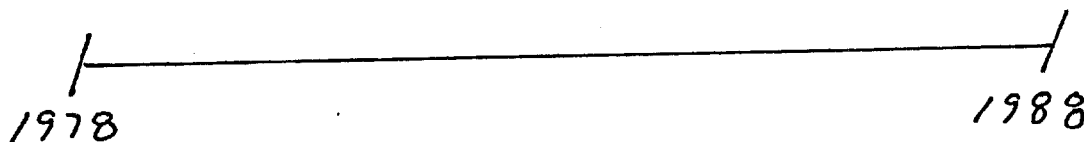
Task

1. Describe the Technical Facility located vic:

SG1A



2. Within the following ten year period determine if and when any "special events" occur:



\* Note: If you do find any "special events" - - - subsequent sessions will be focused on each separate "special event."

This document is made available through the declassification efforts  
and research of John Greenewald, Jr., creator of:

# The Black Vault



The Black Vault is the largest online Freedom of Information Act (FOIA)  
document clearinghouse in the world. The research efforts here are  
responsible for the declassification of hundreds of thousands of pages  
released by the U.S. Government & Military.

**Discover the Truth** at: <http://www.theblackvault.com>

SG1J

7 Feb 87  
Ft. Meade, MD

SG1J

0845

SUI

SZ D AI BI T I ALL AS

whitish  
grey  
hard

Solid

masonry

red  
grey  
smooth

tellish  
level  
floor  
general

AS  
impression  
of tile  
root

Sub-grade  
level  
Component

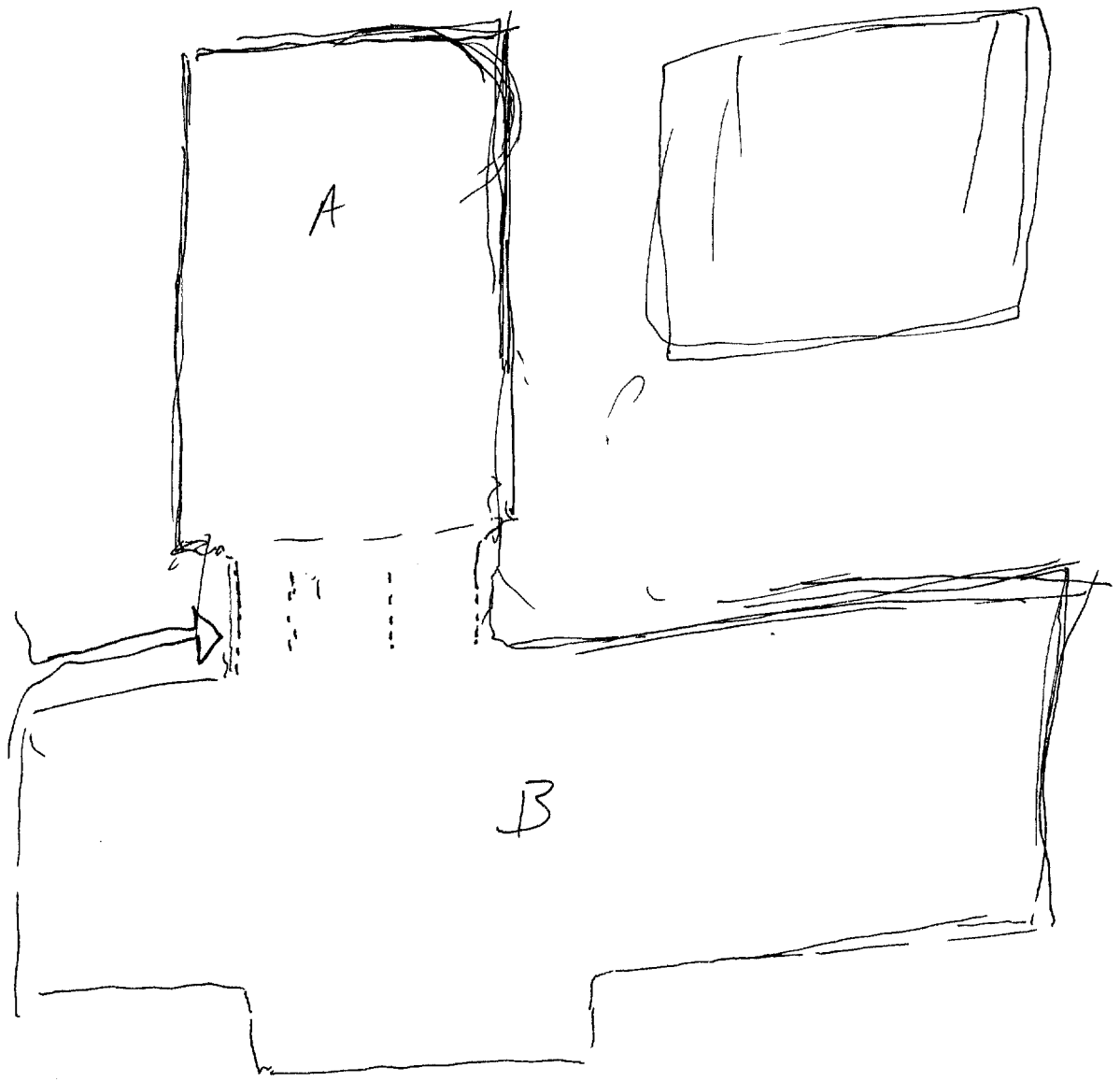
like a  
basement

5 1/2 deeper than average basement - it's "y'ice" 2 levels  
down.

5 1/2 ft. A has more open space inside it. "Like" a workshop  
or shop area - where things are brought together or away  
or organized or finished.

"Basement" area in red

Basement extends  
to corners  
further to  
lower level  
in other  
part of  
structure



SU I

Widow  
in A  
high address  
A disk -  
bags  
clans  
cho wives

54/k Various projects & activities taking place in A -  
perhaps all in some way connected, but at current  
level they're distinct + separate. Separate.

people

don't  
industrial  
absorbed  
interest  
dedicates  
believe in  
what they're  
doing as far as  
they understand  
the purpose.

54/k Pt. B has a wide variety of activities of an  
admin/bureaucratic/other nature. Some are related, some  
are distinct. "like" "format unit" idea for some of the  
activities.

A/S

Several years  
A/S is  
Asian based  
highly ad  
vanced  
Asia  
like intera

China, E. USSR  
or N. Korea

SUI

4

S2

D

A2

F2

T

I

AK

Als

Basement  
weave, 2  
~~weave~~  
plac madras

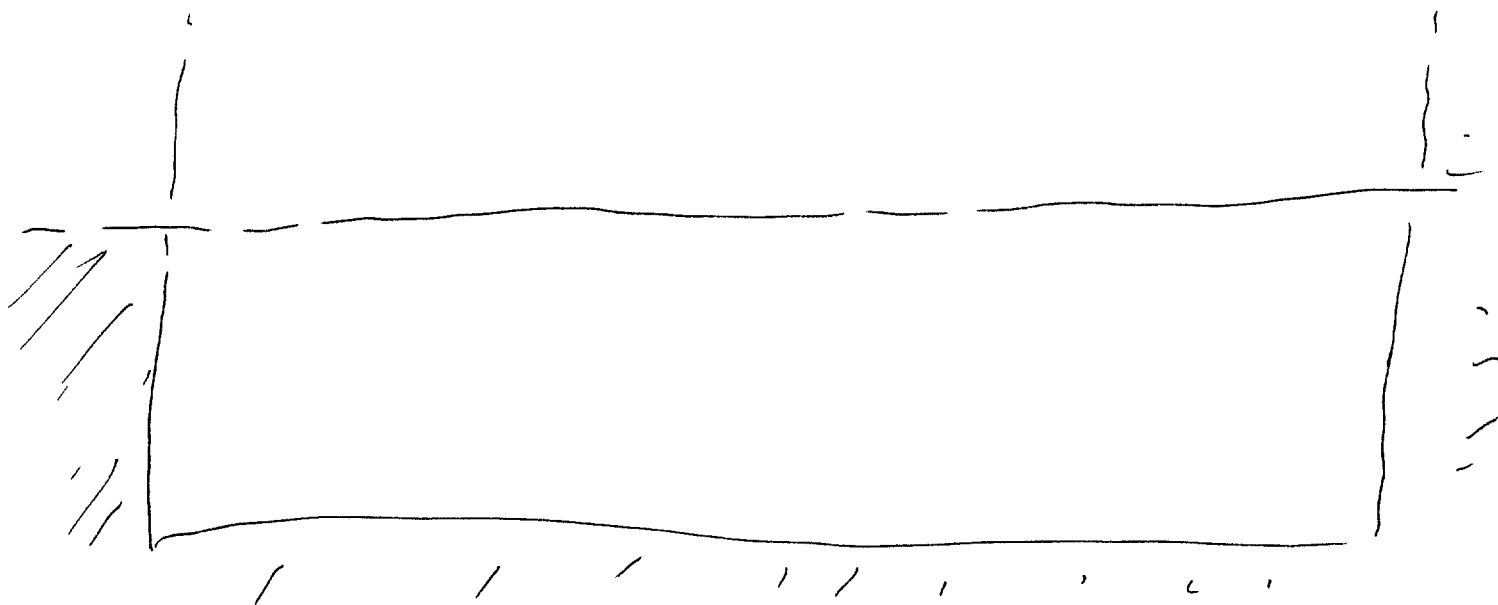
5 1/2 Spool standard heating/cooling etc. Some mass. equipment involved w/ projects above. 3-5 times as tall as a person. Very complex - tubes, pipes, cable heat, flux, meters, dials, fail safe, redundant circuits, steady operation, not fluctuating as it fluctuates would be disadvantageous to purposes. Human bus 2 sound steady. Passon monitor controller. Watches

like not makes from elsewhere in bldg. "Basement" and elevators under part A at least; cubicles; rooms; ~~offices~~

Intercomms passageway

Als  
offices

Black  
shiny





SUI

5

ADL BK  
Boat

White  
to get  
cube  
many  
facets  
+  
angles  
+  
curve

ADL BK  
Mouland

A2 BK  
some box  
feeling of  
aversion  
or  
unpleasantness  
like I don't  
like it think  
of some activity  
occurring at this  
point

54 1/2 in basement, big equipment is manifested  
some sort of pulsing or rhythmic activity in  
support of the main activity taking place  
Conduits

long  
thin  
things

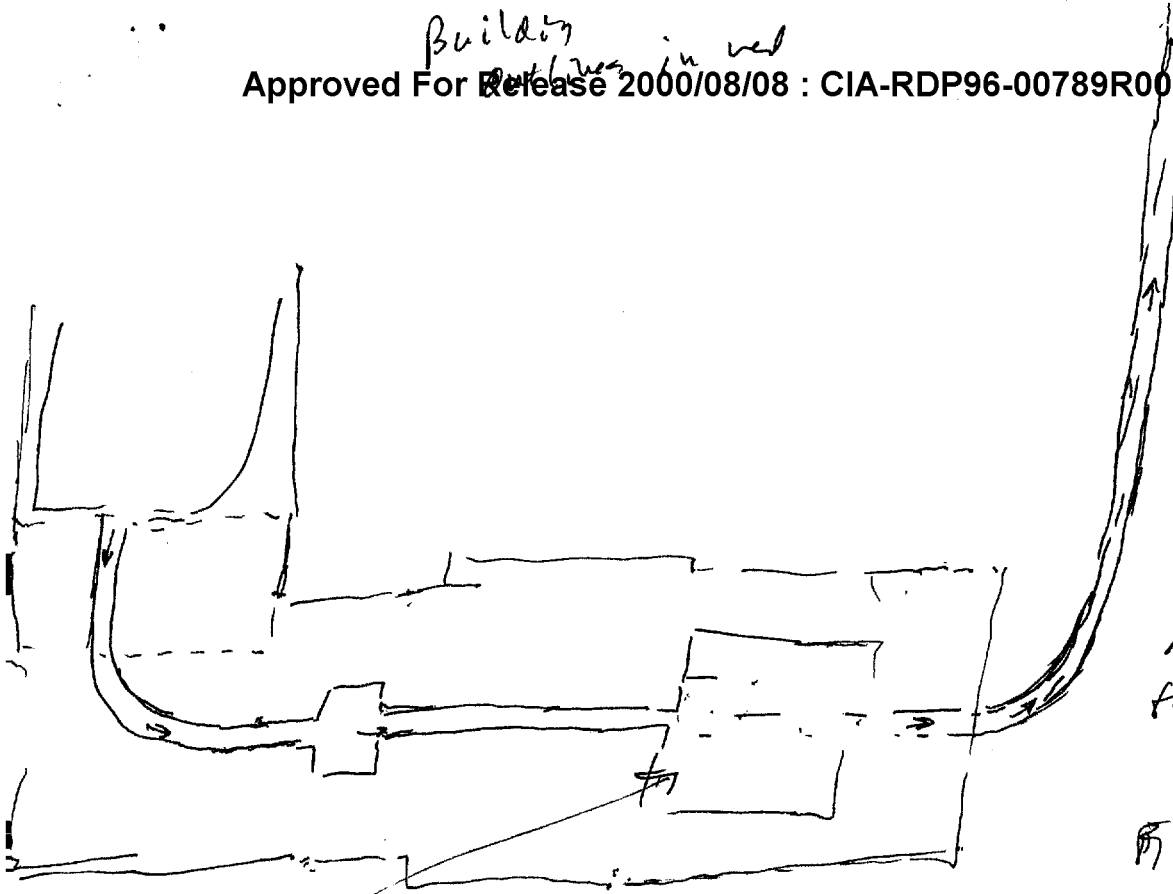
SVI

6

5/2 D AI BI T I ADZ ALG

94/2 packaging/corrections source or conduit, but also  
wallowing/passiveness for people observing/adjusting/monitoring  
altering/adapting.

Building  
outlines in red



Sense of  
looking down  
this passage  
or tunnel leading  
for a long, long  
way, into distance  
rounded component,  
like a pipe or  
rail or tube or  
cable

people here waiting for whatever to arrive. They use  
equipment, some of it of stainless steel, they sawed by it  
it, then whatever proceeds on out opposite end



ATC Bk  
High  
side  
table

By way of Analogy - if this were a submarine, it would have all its hatches closed & locked, periscope retracted, and dead in the water on the bottom while all kinds of activity takes place. During funerals, it's like site is "hermetically sealed" to prevent any inking, getting out to outsiders as to a boat taking place.

D 1 & 2