

30

~~SECRET~~/NOFORN - SKEET CHANNELS ONLY

PROJECT SUN STREAK (U)

WARNING NOTICE: INTELLIGENCE SOURCES AND METHODS INVOLVED

Session Procedures Report (S/NF/SK)

PROJECT NUMBER: 8716	SESSION NUMBER: 1
DATE OF SESSION: 26 OCT 87	TARGET COUNTRY:
REFERENCE:	MISSION STATUS:
TECHNIQUE UTILIZED: CRV	SOURCE IDENTIFIER: 003

1. (S/NF/SK) Monitor Tasking:
2. (S/NF/SK) Source Tasking:
3. (S/NF/SK) Summary: The viewer's summary is attached.

SG1J 4. (S/NF/SK) Comments: (This session was monitored by [REDACTED]
 SG1J [REDACTED] and observed by Dr. Verona and [REDACTED]. [REDACTED] did
 SG1J not complete a session procedures report prior to his departure).
 SG1J

SG1J



CPT, USA

2

~~SECRET~~/NOFORN - SKEET CHANNELS ONLY

CLASSIFIED BY: DIA-DT
DECLASSIFY : OADR

This document is made available through the declassification efforts
and research of John Greenewald, Jr., creator of:

The Black Vault



The Black Vault is the largest online Freedom of Information Act (FOIA) document clearinghouse in the world. The research efforts here are responsible for the declassification of hundreds of thousands of pages released by the U.S. Government & Military.

Discover the Truth at: <http://www.theblackvault.com>

Summary

8716

Site involves a large, partially completed rectangular structure with several floors on a raised area or hill, with other structures in the near vicinity. Part of the structure is enclosed, and is currently being used for various purposes. The remaining portion of it is still a framework with lots of metal present, and amid various clanging sounds and assembly noises it is being worked upon. The area where this is located is somewhat rocky, with a relatively small winding body of water nearby and vegetation, and is either an urban area or a place where a large number of varied-use structures are in the immediate vicinity. The weather is cloudy, windy, and cool at present. A structure nearby of importance seems to be at a lower elevation, and is hollow, long, low, cylindrical, and straight, with angled and flat areas. It doesn't seem to be a conventional shape or design. Inside it is divided into compartments or rooms, with objects inside some of the compartments. One compartment (compartment A) is large, white, spacious, and well-lighted with the impression of padded walls. A small, red cylindrical object is perceived along on wall. An object encountered further along is against the wall, secured to it, and is dark grey, boxy in shape, made mostly of metal with some small round areas of glass, is electronic, connected into something else, is sophisticated and complex, has conduits with cables inside leading into it and serves the purpose of measuring, controlling, communicating information, and is adjustable and variable--the idea of acting and being acted upon, integral to a larger system--with the impression of dials to provide status of equipment and level of functioning. People routinely examine the information provided and adjust as necessary--"like" climate control. Compartment B is next and is longitudinally subdivided into two sub-compartments. It is dark in color and not as well lit. There are many small details and larger objects here. It is not frequented by people as much. Objects/equipment present tend to be able to "mind itself"; provide various functions and services dealing with the rest of the "structure." Compartment C has a roundness to the front of it, seats, windows, is lighted, and also so details and devices, but they are fewer and less obtrusive. This "structure" presents the strong impression of some sort of conveyance--an open, voluminous area; next an area with equipment functioning semi-autonomously (this area is congested or filled with equipment that is secured to surfaces "like" floor and walls). Finally another relatively spacious area with windows, seats, and equipment--read outs, dials, gauges, etc., but not intruding into general area or space.

*Compartment D**VIEWER 003**26 Oct 87
- 8716*

260487
FF made, used
Gene
112

236601

96 8989



A. across flat
bar

B. land

A. up row
up
down

Solid

B. starts

A. most
up
and
Solid

B. starts

32

grey

red

green

blue

hard

soft

black

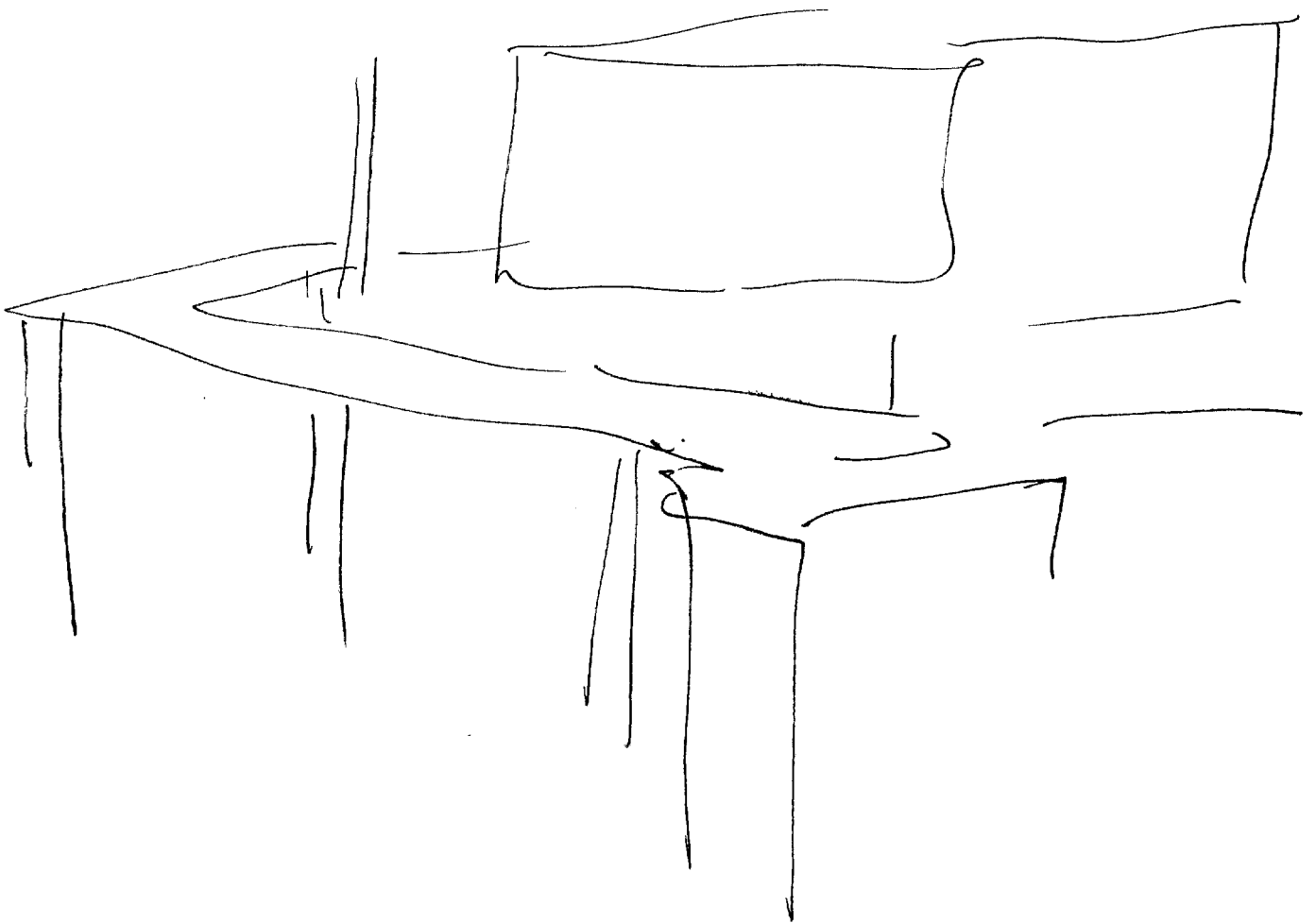
cool

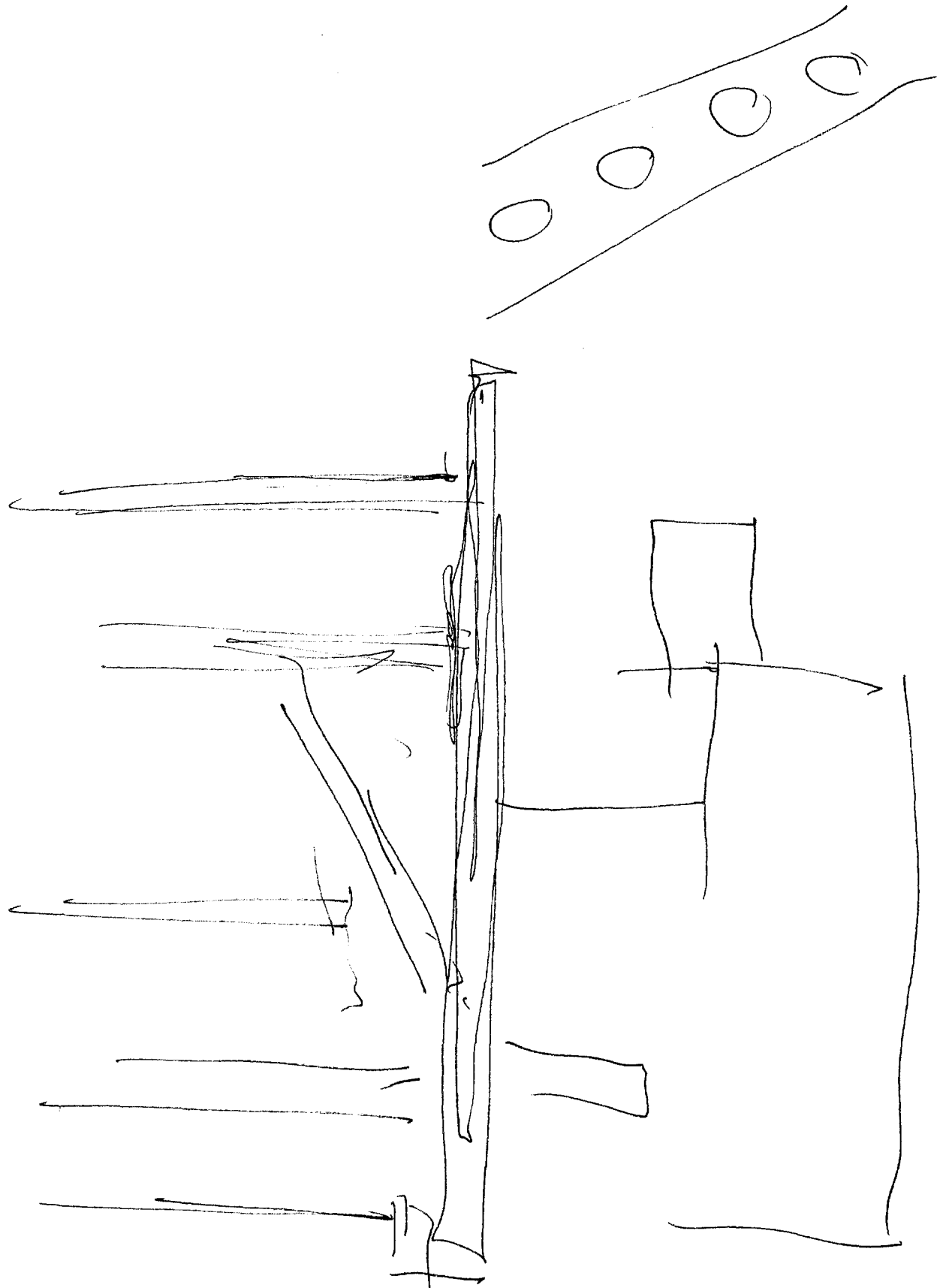
smooth

rough

dry

red
long
high
wide
deep
long
AZ BK
chills
Dwarfwhelms





52

4
ALS

Medal

gray
cold

high
wide
airy
solid
angled
sloping
vibrant

hard

long
noises

white
windy

rounded
cylindrical
thin
long
dished
complex

structure

52

wild
open

gran
black
grey
dim

cloudy
rocky
vegetation
structures

many
peaks

hill

raised
up

water

winding

black

surface

surface



52

AZ
+2 BC
Imez

EI

T

J

ADL

ALS

grey

Structure

metallis

technical

tall
large

framework

metal screws

metal parts

ground

beams

sifters

Sheathing

"like"
walkways

ALS/S-4 impression of construction site, as if structure is not yet finished, but is being used partially enclosed areas "like" rooms + floors; but other areas still open to elements "like" framework & awaiting further work.



SUZ

7
#6

S2

gray
white

large

official
papers

people

stressed

workday

concentration

S4 1/2 involves paperwork; analytic abilities; knowledge of
certain facts.

overlooked

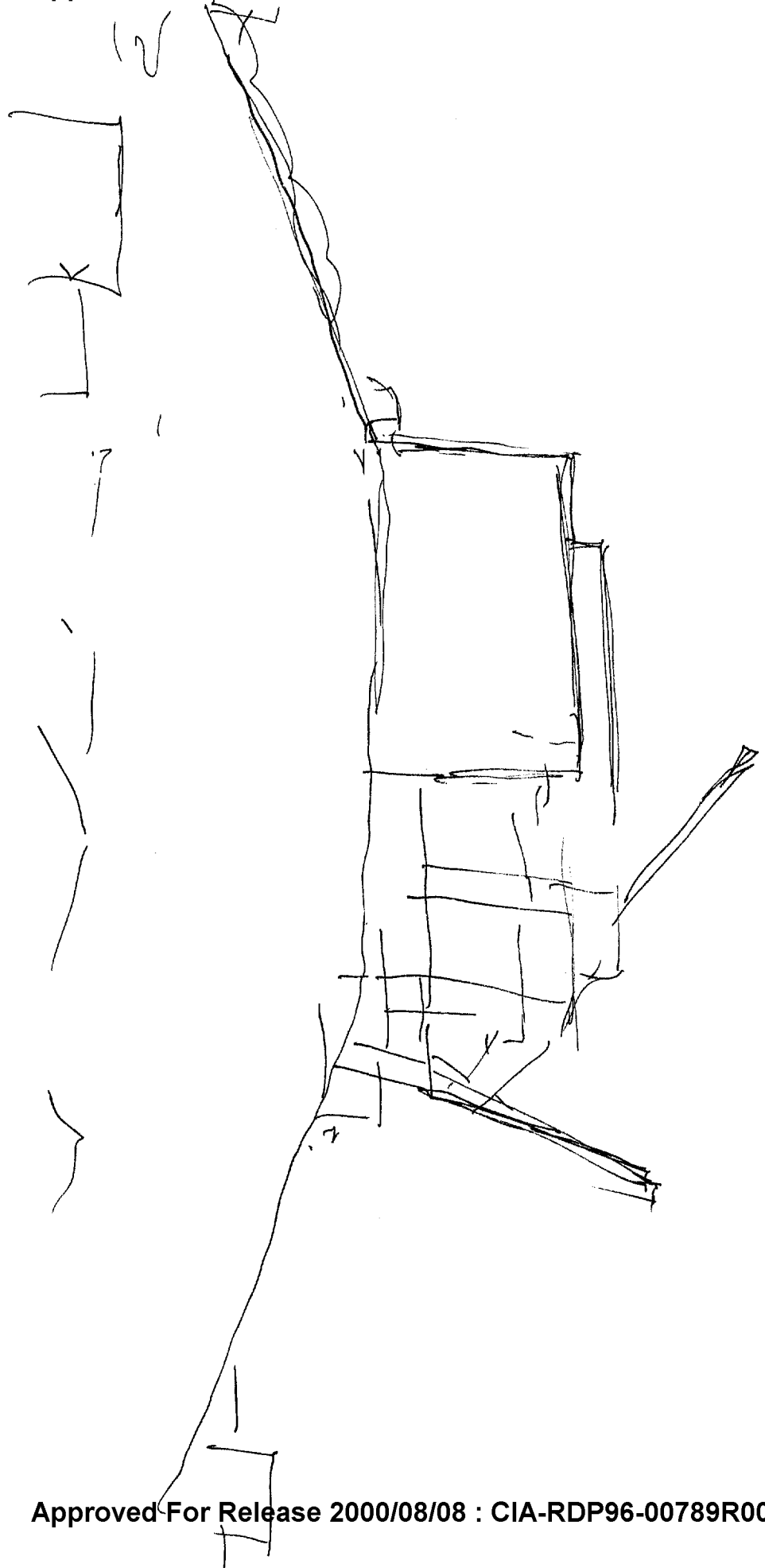
S4 1/2 urban area or large number of varied-use structures in
reasonably immediate vicinity.

level
floors
rectangular

large
new

brownish
reddish
gray

7a



52

SVI

ALS

for BIA
sov embassy
in D.C.

interim Summary

Impression of large rectangular structure w/ several floors which is only partially complete. Construction/fabrication/assembly continues on remaining unfinished portion. Structure seems to be "vzrized up" or resting on something "like" a hill or other elevated "platform".

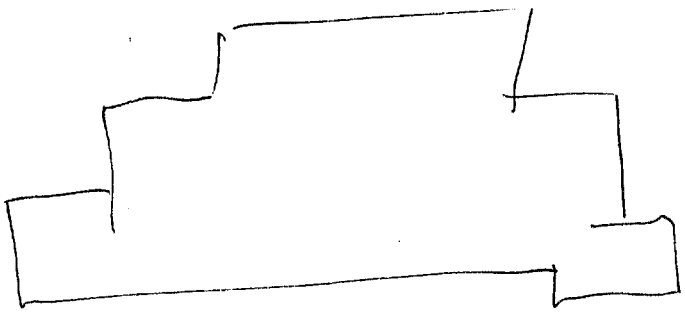
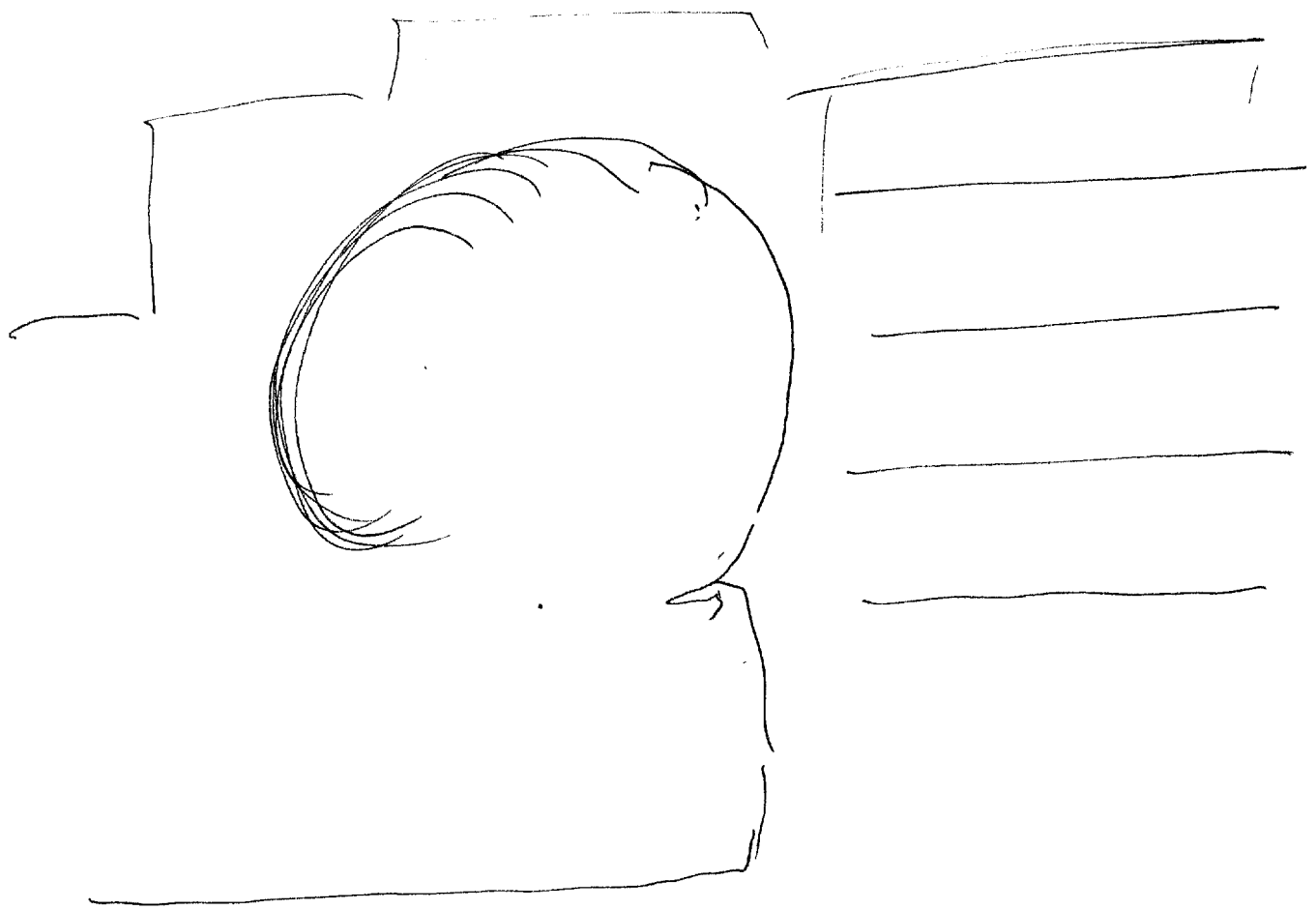
- rounded
- curved
- sloping
- solid

white
black

S4/2/ALS seems lower in elevation.

Structure

- yellow
- hollow
- long
- low
- spacious



SUJ

9
HLS

52

rounded
cylindrical
shape



angled
flat areas
around

plastic
unit

Suk this structure doesn't seem to be a
conventional shape or design.

inside (c)

white
quiet
well-lighted

compartments
rooms

objects
equipment

Suk impression of padding

bed

cylindrical
small

object

91



SUI

Doc MS

52

D

A1

E2

T

I

Object

dark grey

boxes

hard

metal
glass
device
app

apparatus

electron

connected

connected

elaborated
complex

complex

in place

secured

conductivity
table

measuring
control
communications
adjustable
variable

Sub

acts & is acted upon integral to a system.

SUI

52

lighted

54 1/2 has "like" data to provide status of equipment + level of functioning. People routinely examine the information provided + adjust as necessary.

Compartment A

"like"
Climate
Control

Se's mostly open space; big wt; light colored walls, ceiling, floor. Sense of softness to surfaces. "like" paddos;

Compartment B
+ B1

Subdivided

dark
color
dark
grey

complicated

Se's many small details or objects.

Compartment C

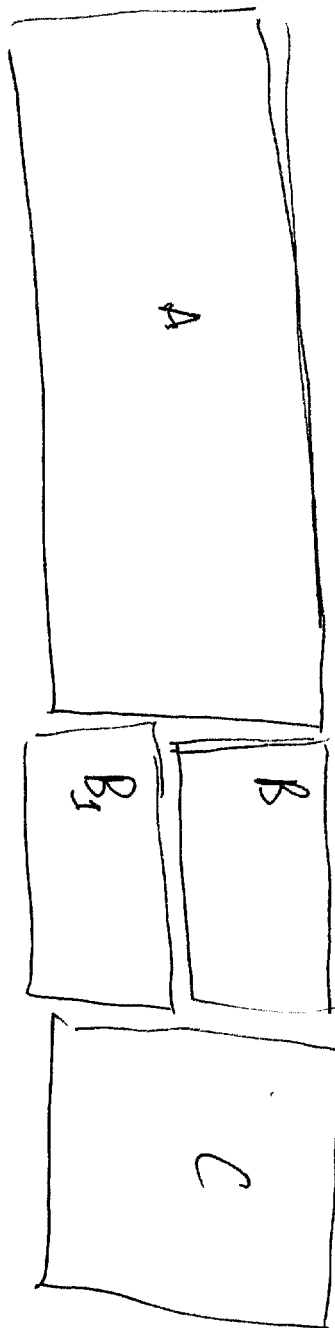
Spacious

Seats
Windows

roundedness

lighted

112



S2

SUZ

AZ

EI

I

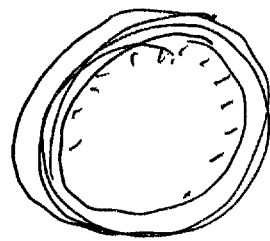
AOL

D
ALB

SUZ/ALB - impression of conveyance, or something to do with a conveyance.

round
flat

object



glass

metal
gauge

Component B.

5/12. People spend less time here. Object/equipment present tends to be able to "mend itself". Provides various functions + services dealing with rest of structure.

Component (c)

rounded
long

hollow

metal

Component (d)

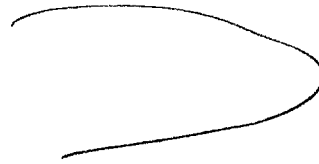
SUI

B
AG

52

white
shiny

aluminum
windows
service seats
controls



54/2

configuration reminds me of some sort of
conveyance - layout - first open, voluminous area,
next area with equipment front by semi-autono-
mously ~~system~~ (this area is congested & filled with
equipment that is secured to surfaces, "like" floor, & walls)
finally another spacious area w/ windows, seats, &
equipment - readouts, dials, gauges, etc., but not
intended in general space or area.

1154