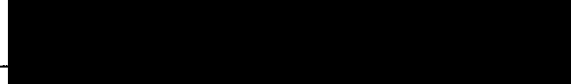


PROJECT: 8208 START: 1305
 Approved For Release 2000/08/08 : CIA-RDP96-00789R000300540002-8
 DATE: 4 June 87 SANCTUARY: 1318
 SESSION: 01 TARGET: 1315
 SOURCE: 079 FINISH: 1422

SG1A

COORDINATE: 

852

FRONTLOAD:

" THIS IS A NEW MISSION WITH A VERY SHORT FUSE. WE WILL THEREFORE BE ALTERING YOUR WORK CYCLE SO THAT WE CAN SQUEEZE THIS ONE IN. KEEP IN MIND THAT THIS IS AN IMPORTANT MISSION AND THAT CARE MUST BE TAKEN TO PROVIDE ACCURATE IMPRESSIONS. "

NOTES:

- ① SOMEWHAT COOLER DAY, OVERCAST. SPRINKLES PREDICTED.
- ② NO KNOWN OR ~~STATED~~ STATED INDEMNENCIES -

DRAFT: _____

TYPING: _____

PROOF: _____

OPS: _____

This document is made available through the declassification efforts
and research of John Greenewald, Jr., creator of:

The Black Vault



The Black Vault is the largest online Freedom of Information Act (FOIA) document clearinghouse in the world. The research efforts here are responsible for the declassification of hundreds of thousands of pages released by the U.S. Government & Military.

Discover the Truth at: <http://www.theblackvault.com>

4 Jan 87
8708
079

2

ITEMS } CONTENT
FUNCTIONS

→ A

SG1A

- ★ Umm, LARGE AREA, EXPANSION, AN EXPANDING, ENTERING FROM SIDE
- A REMAIN OUTSIDE
- ★ SIDE IS SQUARE, SIDEWAYS, A RATHER CIRCULAR AREA, LARGE
- A DESCRIBE YOUR LOCATION
- ★ LOOKING ACROSS, A HARD STRUCTURE, LIKE CEMENT, GREEN AREAS, GRASS, YELLOWISH STRUCTURE, ~~THE~~ I'M WALKING OVER IT, BIG CEMENT, SQUARE SLAB, HARD, ROUGH, FROM THE SIDE, LYING ACROSS,
- A PAUSE - YOU ARE TELLING ME ABOUT MANY STRUCTURES - STAY WITH ONE THEN MOVE TO THE 1ST ONE
- ★ OK - THE FIRST IS TALL, COMING DOWN, SPREADING OUT, ADJOINING, SQUARE, TALL, WINDOWS, LOWER STRUCTURES AROUND, LOW SQUARES, A PLAN, LAY OUT AREA, DEVELOPED, ADJOINING -
- A ADJOINING RAW DATA
- ★ MADE TO JOIN OTHER, ALMOST CONNECTING
- A TELL ME MORE ABOUT THIS FIRST STRUCTURE
- ★ THE TOP - THERE'S CURVING OUTWARD, AN OPEN BALL, STRUCTURE IS TALL-SQUARE
- A AN OPEN BALL

3 ITEM(S) (CONTENTS)
FUNCTIONS

★ SITTING ON TOP ON A HIGH PLACE - CURVES OUTWARD, NOT CLOSED, MAN MADE, PORTABLE, HEAVY, STANDING, PLACED ON A STAND - SCOPE

→ SCOPE RAW DATA

★ DEPTH, THERE'S A DEPTH TO THE BALL, A THICKNESS, LIGHT COLORED, "A" FRAME

→ GIVE ME THE WORDS THAT DESCRIBE THE PURPOSE OF THE BALL.

★ BUBBLE, SKY, GOING OUT, REACHING OUT, DIFFERENT DIRECTIONS, LEAVING, SEEING, LEAVING ENERGY, GOING OUT PICKING UP, CERTAIN POINTS, ROTATIONAL, THE MEN...

→ DESCRIBE THE MEN

★ WALKING, WORKING, TAKE CARE OF THE BALL, MEN ARE/SEEM TO BE ALONG THE LINES OF A SCIENTIFIC MATTER

→ DESCRIBE THAT MATTER

★ A TIGHT PULLING INWARD, VERY TIGHT, CAREFULLY EXAMINING, THE CAUTION - PRECAUTIONS,

→ CONTINUE TO DESCRIBE THIS MATTER, THE ACTIVITY

★ ONE MAN IS A TEACHER/LECTURER, SOMETIMES, THE MATTERS HERE ARE EDUCATING/TEACHING, A NEW-DEVELOPMENT, I'M SEEING CLEARER NOW THE BALL IS A LINKING, A LINKAGE, THERE'S AN EFFECT, UP AND DOWN, THE -- SOMETIMES THE BALL IS COVERED BUT IT CAN STILL WORK COVERED. THERE'S AN UP AND DOWN-

→ Activity Continue

4

- ★ Men, The men control the operation, its use, different sectional, etc - one part sits higher than the other, As you move towards the center its lighter - The ball sits outside -
- Pause now - That was the first structure - focus on the next - describe
- ★ THIS STRUCTURE IS NOT AS TALL, ITS SQUARE, TRIANGULAR at the top - little diagonal, sits very straight, sitting across, coming up, wider at the bottom, a lower structure, triangular portion, flat, wide bottom, more modern -
- Give me the words to describe this structures purpose.
- ★ THE PURPOSE - There's men here, building something - building something here and building something nearby. This could be a rest place - a feeling of building something new nearby - compartment of the structure - small, the end -
- The end row data
- ★ The compartment, men enjoying their work, more physical work, physical labor, bringing together, pooling together, a rowing, a --- men working together, face to face, strength comes from each other, talking, not much thinking, rebuilding, putting together -
- Pause - Focus on the next structure
- ★ ITS OUT FURTHER, There's one part of this structure that sticks way up, square at the bottom - white, it sits out by itself.

5

→ Tell me about this structure

★ its very old, it has steps, the bottom of the structure is in use, the bottom is where the work goes on, the lower floors - classified - not as easy to get into - there's a blockage here

→ Blockage

★ not everyone able to use this facility, paperwork here, harder area, filing papers, string papers, large amounts at one time, bulk -

→ Pause now - These papers will tell you the reasons the purpose for this place - focus on those papers

★ Protecting, protector, growing strong, little men getting big, increasing, increasing to fight - preparing -

→ Pause - focus on the next structure -

★ Yes. This is a structure that is very well lighted, shining down, rows of lights, production, very well lit - I'm inside - the lights are lines of light shining down on long, long, thin moving tables, very smelly, musty, noisy area, producing - I can smell it

→ Describe the smell

★ oily, dirty, smoky, powdery, I think this whole area is near water - I forgot to tell you that before - they produce large amounts here - silver metals - the producing of heavy metals -

→ Describe those metals

6

★ TO BE PLACED INTO SYSTEMS, People can make Bellins in this type of business - Sometime people hate this kind of business - you can progress - The metals are all sizes to be placed into systems - Fanning systems here, coolers -

→ Long Thin tables

★ The top moves, carrying loading onto, not plastic top but soft - The people work over the tables, they're cutting - within circles - small circles, a placement in the circles - picking up a circle, placing in the circle, something very long and thin -

→ Continue to describe the activity

★ noisy, working on big machinery, cutting, making, crating, boxing off -

→ cutting describe -

★ The machines can cut right through, electric machines - spin at the top - cut right through - metal shields - people at the table work with small presses, refining, cutting to the exact -

→ Describe the things that are being cut

★ The metals, its to cut the ~~shields~~ ^{sheets} of metal to make them workable, a sawing,

→ Give me the words to describe the purpose of the metals

7

★ TO BE USED By man, making, associated with some weapons - firing, fire, to come out, government, government standards, the woman is holding something little in her hand, its something they make here, its sharp, very sharp, so sharp it could kill you, it hurts

→ Pause now - Back inside next structure

★ WIDE, WIDE TOP, WIDE BODY, square, sitting at an angle -

→ continue

★ Reading, learning the work, helping, the people here take an interest in learning different ways, other ideas, They are more relaxed, more enjoyable - Prevention

→ more

★ USAID, how to cope, how to live with, how to deal with, These people think, they are ahead of their time, thinking way out - concerned with now - how land will be destroyed - nurturing - people - the people here are off - not centered

→ Raw data

★ not-thinking - thinking is not - - - The thinking is for far future. but they are off, they are wrong - These thinking is towards years from now - they think they are right - they should start over again

→ Describe the things they think about

8

- ★ Digging in the land, putting something on the ground -
- Something
- ★ Its not food - its tunnels - there's going to tunnels in the ground, then there's going to be drops
- Drops
- ★ Watery drops
- Tell me the results of these drops
- ★ it will help to hide - conceal - so nobody knows where its located - I think you will be able to walk under the ground -
- Pause now - This is a large area focus on the things inside the structure that interest me
- ★ Light, zig-zagging, at low, within a compact area, within a zone, a zoning of light, intensities, invisibility, the light -
- Stay inside and continue to describe
- ★ Definite boundaries, the light, the way it shines out, enormous - zig zagging, crossing over, measuring - density - taking very small parts of the whole, working with very small parts, power, power
- Power raw data

9

- ★ The study of energy, pure energy - an energy so pure, cutting energy, cutting, slicing,
- Describe the effects of this energy
- ★ heat, could be poisonous, it could hurt, could help - They will use it for hurt - could kill many people at one time, ~~it~~ it's been around for a while, not new -
- describe - The reason this energy is here in this area -
- ★ a build up - starting up -
- Describe the source of the energy
- ★ The --- I can't tell - natural energy - making
--- ---

Pause now - leave this area - Return to your
~~Assess~~ sanctuary -- 2/14/22

SG1A

Approved For Release 2000/08/08 : CIA-RDP96-00789R000300540002-8

Approved For Release 2000/08/08 : CIA-RDP96-00789R000300540002-8

I first received the impression
of a large area, Airwaying -
joining together. I first
perceived a structure round square
I then perceived a circular
ball, curving outward.
It was on the stand. It
was white. I perceived men
concerned with this. These
men were concerned with
matters of a scientific kind.
Some taught & lectured.
The ball rotated and
sometimes it was covered.
It was man generated or
man operated and could
turn whenever it was
called up or set. The ball
had depth.

The present area - I perceived
a lower structure with
a compartmented area. One
man worked in the
compartmented area. The men
who worked here took on work
of a more physical nature.

They worked for a long time
either pulling together and a

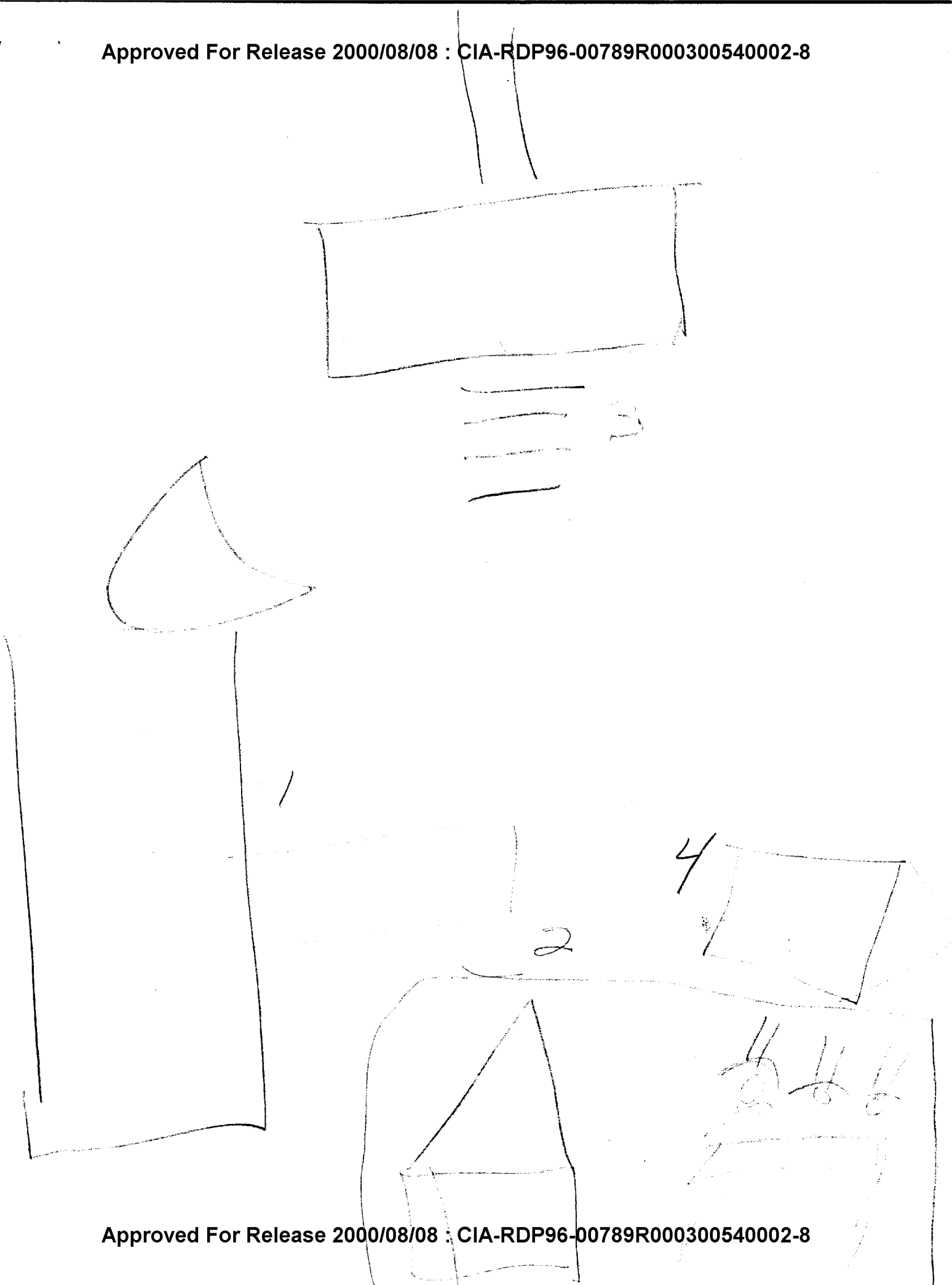
Dependency here. There was either another structure close to here or inside here, that gave me a factory feeling. I could sense women also working in a factory. There were lights coming down on long tables. I could sense large noisy machinery. I sensed large sheets of metal or sheets of metal being cut, and then something being produced. I sensed cutting - could shatter a body.

Next area. A structure with a long narrow top, with steps. I sensed storage of paper - classified work. A blockage here. Not all people were allowed to enter here.

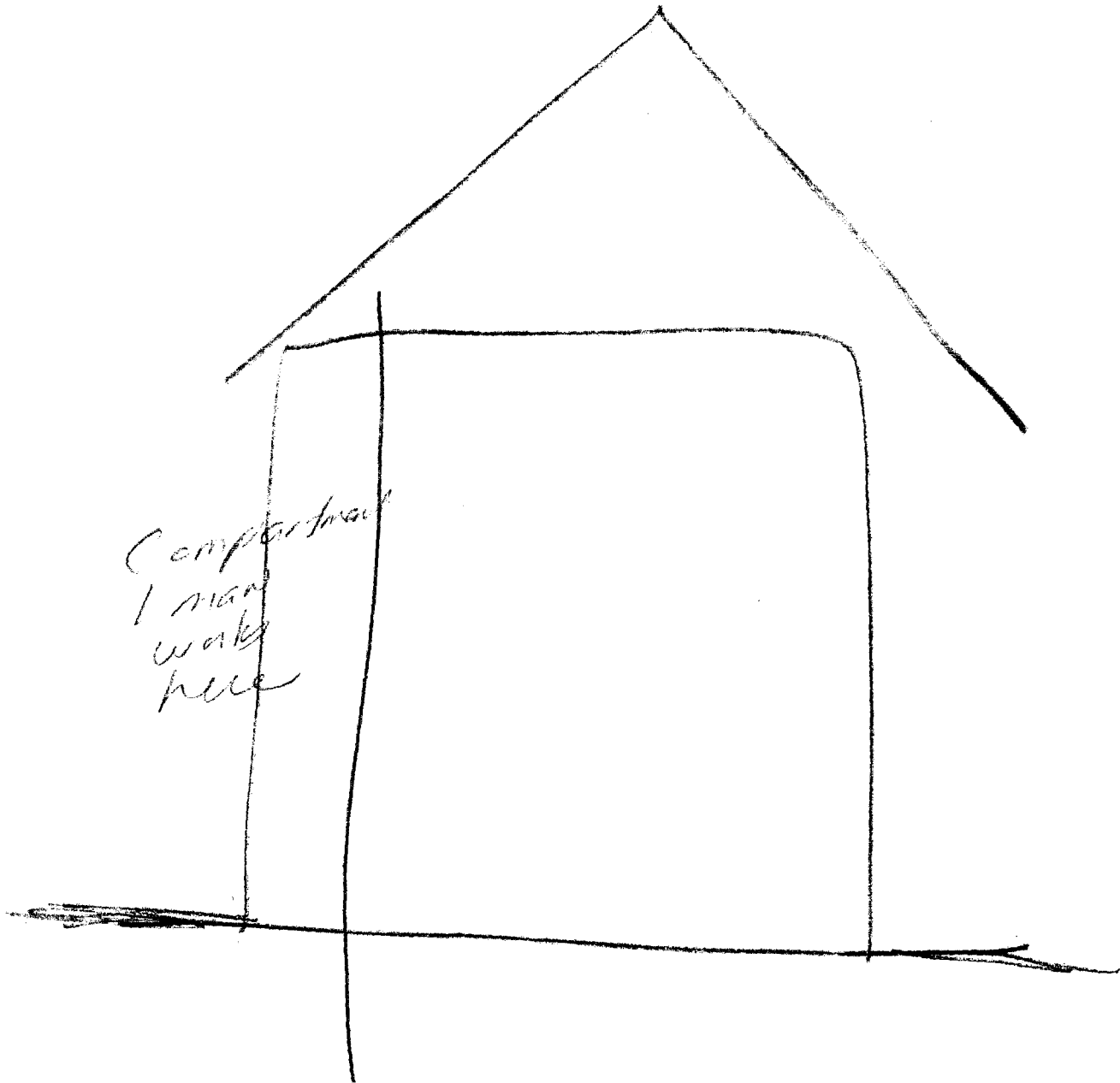
The next area - a small structure. People here

were way off, not centered

Concerned with nurturing
the land? A. Type
of nurturing. Placing
something underground
and trying to hide a
cancer at - Drops - Dropping.
The last impression -
light, rays - All inside
a contained area. A
slicing, dicing, measuring
of pure, pure energies.

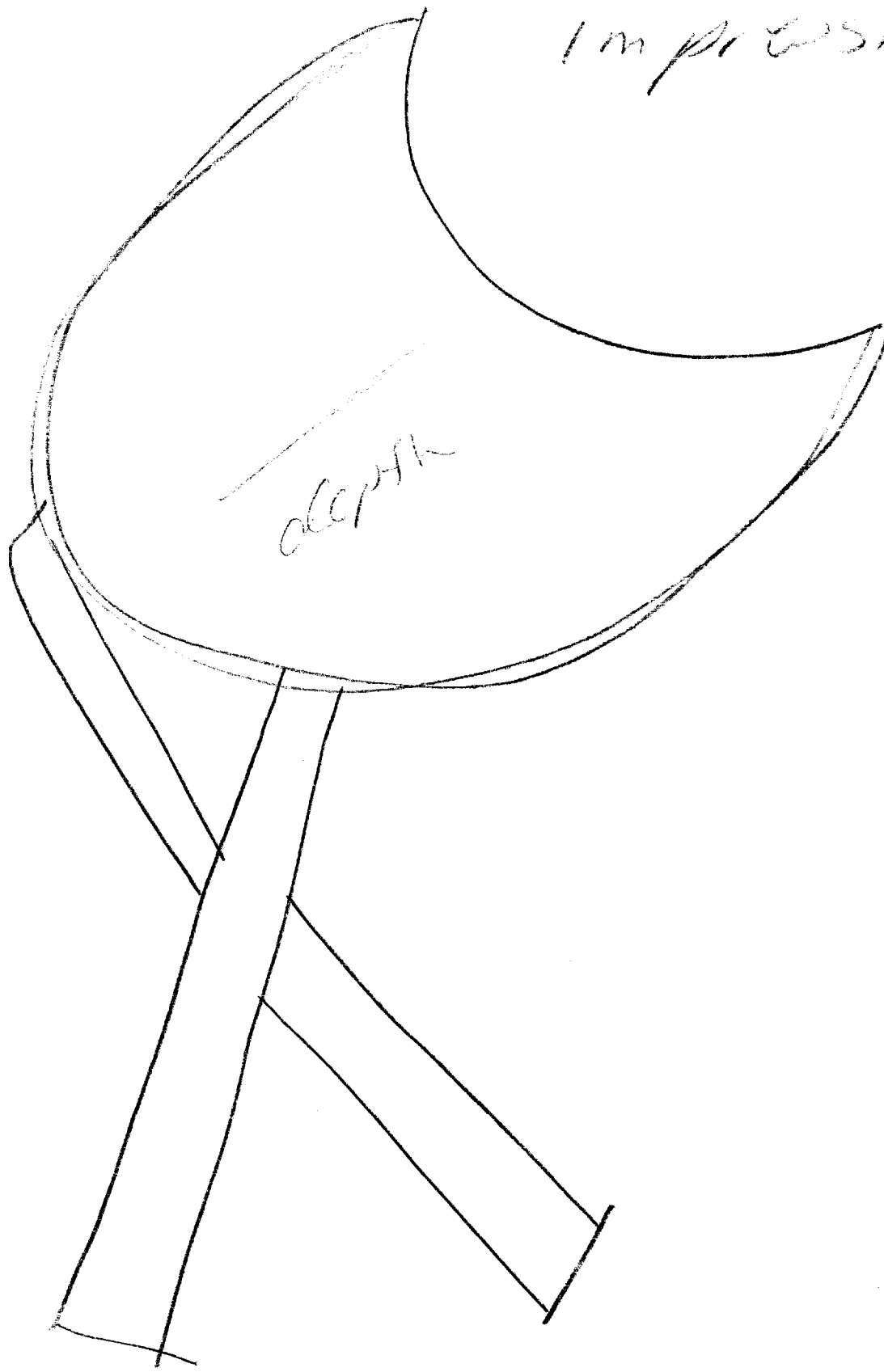


3rd
impression

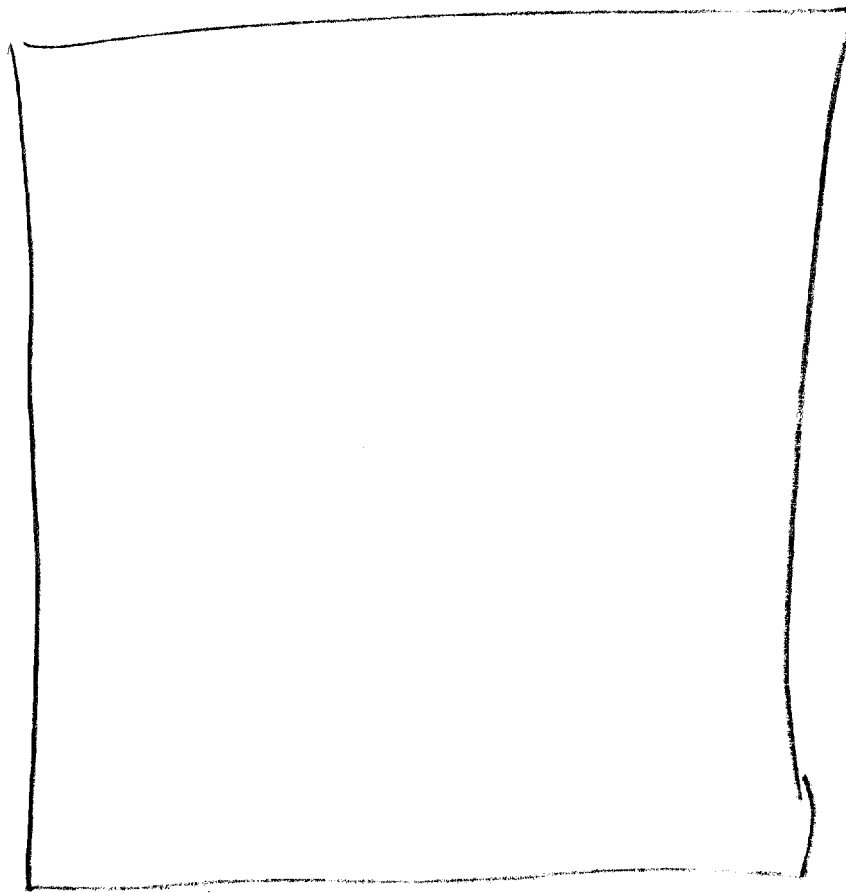


229

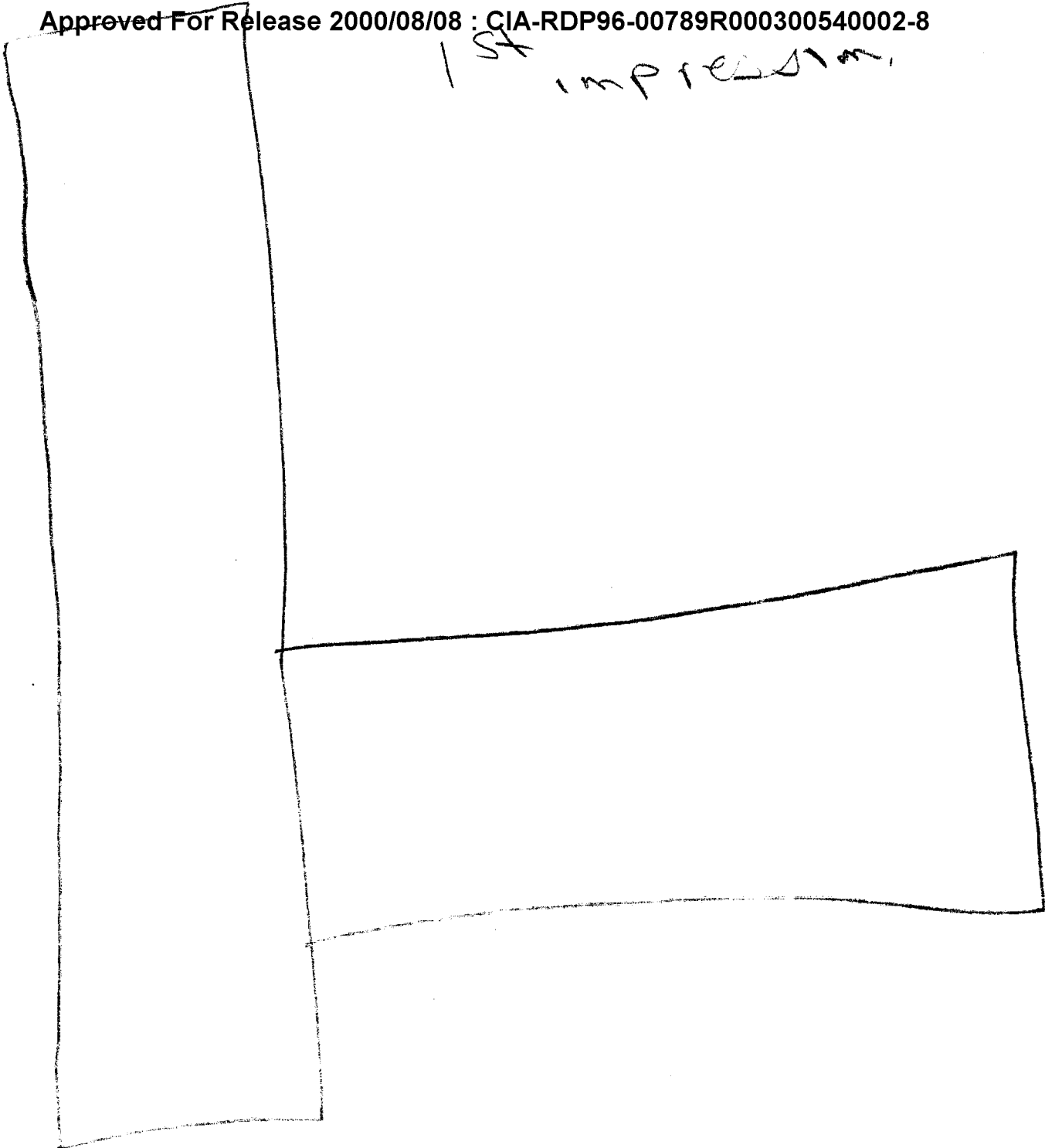
Impression



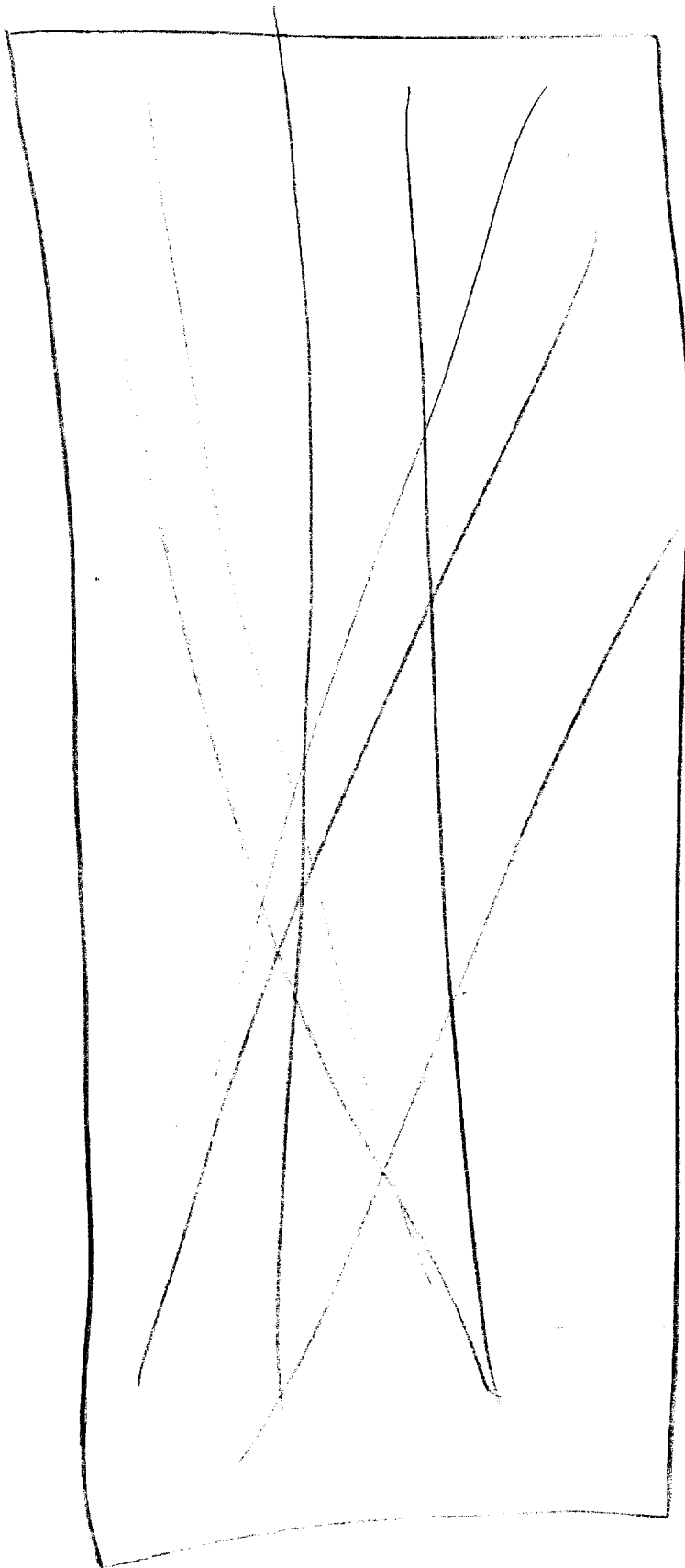
4th
impression



1st impression.



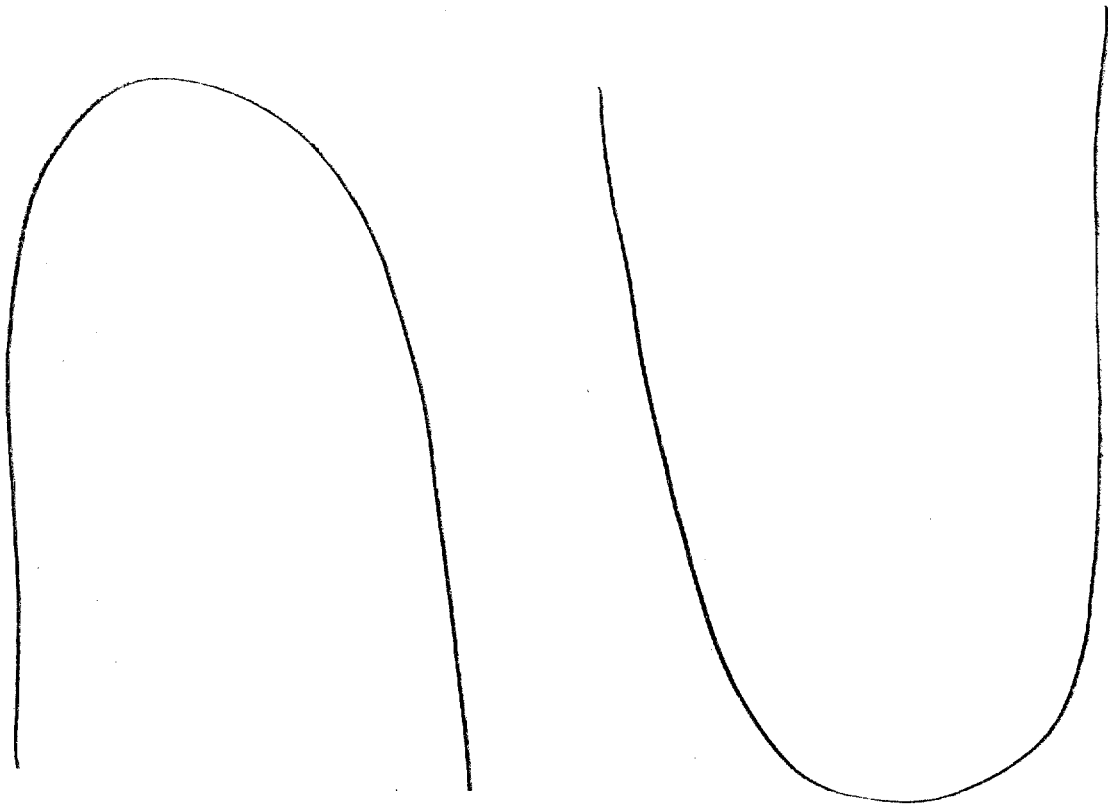
looking
always



*Energy
within
a contained
area*

00 drive

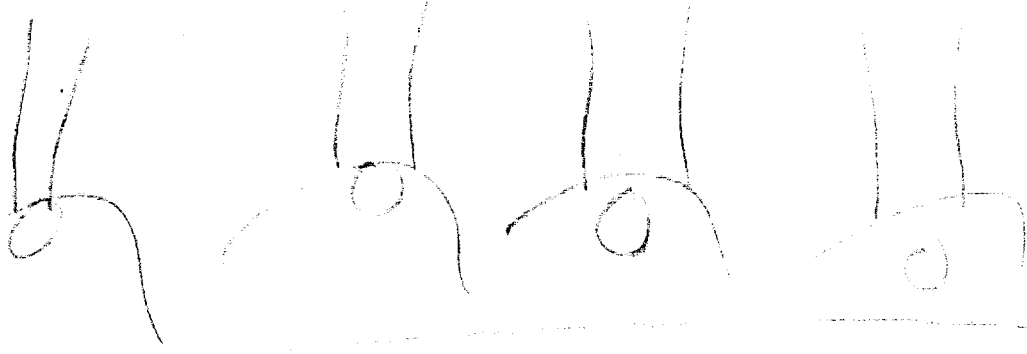
underground



Little hut



LIGHTS



table

on factory setting