

(2)

14 Aug 87
NA

~~SECRET~~/NOFORN - SKEET CHANNELS ONLY

PROJECT SUN STREAK (U)

ERV SESSION PROCEDURES REPORT

WARNING NOTICE: INTELLIGENCE SOURCES AND METHODS INVOLVED

CONTROL NUMBER: 8709	NICKNAME: None
DATE OF SESSION: 12 Aug 87	TARGET COUNTRY: UR
REFERENCES: None	SESSION NUMBER: 02
DATE OF REPORT: 13 Aug 87	MISSION STATUS: Continuing
TECHNIQUE UTILIZED: ERV	SOURCE IDENTIFIER: 079

1. (S/NF/SK) INTERVIEWER TASKING: Tasking as listed in the first session conducted with this Source on this project has not been changed or re-directed. This session was still concerned with the primary phase of the tasking package, the description of the characteristics and configuration of the US "Stealth" bomber. Other phases of the tasking package were not addressed in this session.

2. (S/NF/SK) SOURCE TASKING: Source was told only that this was a continuation of the previous session and that She should concentrate Her focus of attention on the, "long, narrow, hard, metal object" reported upon in the previous session. In addition, Source was provided the same encrypted coordinates as the initial session, 137500/112794, as per Extended Remote Viewing (ERV) protocols.

3. (S/NF/SK) INCLEMENCIES: There were no reportable incidents or anomalies which may have influenced the data obtained in this session.

4. (S/NF/SK) SUMMARY: Source furnished the attached summary which was prepared following the session and submitted to the Interviewer within 24 hours after the session. The completeness of the typewritten summary has been compared to the Interviewer's notes and all deletions, changes, and/or corrections have been verified as acceptable by the Interviewer. In addition to the information provided in the summary, Source provided additional information during the actual session which was inadvertently omitted from her summary and which may impact on the final analysis of the data provided. That additional data is provided below in raw unevaluated form:

~~SECRET~~/NOFORN - SKEET CHANNELS ONLY

This document is made available through the declassification efforts
and research of John Greenewald, Jr., creator of:

The Black Vault



The Black Vault is the largest online Freedom of Information Act (FOIA) document clearinghouse in the world. The research efforts here are responsible for the declassification of hundreds of thousands of pages released by the U.S. Government & Military.

Discover the Truth at: <http://www.theblackvault.com>

~~SECRET~~/NOFORN - SKEET CHANNELS ONLY

a. (S/NF/SK) Source became "fixated" on the concept of a "flat, glassy sheet" located within the inner workings of the "plane". (NOTE: This was the first actual statement by Source that She was viewing a plane. Previous references by the Interviewer had always been to a "flying object"). This "glassy sheet" made a soft humming noise and at other times a "buzzing" noise. The buzzing noise seemed to Source to be the initiator for the system to begin working. This component was perceived as scanning out from the aircraft but only when needed and collecting information which was processed rapidly and accurately. The scanning sequence was done in a semi-circular manner and recorded within the component where it could be reviewed on the ground.

b. (S/NF/SK) The "~~soft substance~~" being placed in tubes within the aircraft remained a confusing issue throughout the session. To Source this substance was odorless and tasteless but when She was "exposed" to it for a while it caused Her throat to become irritated. The material ~~required the crewman to wear~~ protective clothing when installing it in the aircraft. There was an impression that it may change its form from a gaseous element to a more solid substance under pressure and that its purpose may be to eliminate exhaust gases or residue being emitted from the power source of the plane. There was a final concept associated with this substance. Source perceived that the material may be intentionally "spilled" or ejected from the plane for reasons which were unclear to Her.

c. (S/NF/SK) Early in the session, Source began to perceive the concept of something being dropped from this aircraft. This was not pursued as yet since this idea has more to do with the actual function of the plane rather than its configuration. In future sessions this idea may require further clarification.

sent & returned?

d. (S/NF/SK) Source may have perceived the idea of an imminent structural modification to an external component of the aircraft. During this session Source described a component located on the side and attached to the external skin of the aircraft. It was referred by Her as, "the Flower or pretty part" and appeared to be out of place and protruding from the side of what should have been an otherwise smooth surface. At this point She perceived that "they" (personnel associated with the aircraft) may decide to move this component to the a position closer to the top of the plane to better even out the surface. The purpose of this component could not be perceived during this session.


e. (S/NF/SK) When specifically tasked to determine why the aircraft was, "so secret", Source replied it was because of its ability at "pinpoint accuracy" and its ability at "scrambling and mixing". Source further commented that the public is generally aware of the existence of this aircraft and has ideas concerning its use.

~~SECRET~~/NOFORN - SKEET CHANNELS ONLY

~~SECRET~~/NOFORN - SKEET CHANNELS ONLY

5. (S/NF/SK) COMMENTS: Source's data continues to be tantalizingly complete concerning a "high-tech" aircraft of some sort. There was an early tendency by the Source to continue to describe the object in terms of a missile or rocket system. She eventually objectified these comments by stating that the object was a plane and from now on the Interviewer can speak in terms aircraft when tasking the Source to describe the object. She has seemed to perceive the fact that this aircraft "drops" things, which is its primary mission of course, and that there is a tremendous amount of new technology involved in the production of this ship. Much of what She has reported to date is as confusing to the Interviewer as it is to the Source due simply because neither individual has any idea what the technological basis for this aircraft are or what the references made during the session may actually be describing. In the next session, it is proposed to notify Source that at another location there is a similar aircraft and that She is to locate that plane and describe its characteristics and compare them to the aircraft She has already described. It is believed that this tact will not present information that will cause the Source to ADL the description or to begin a drive which would jeopardize Her continued utilization on this project.

SG1J


GS-13, DAC
Interviewer

~~SECRET~~/NOFORN - SKEET CHANNELS ONLY

~~SECRET~~ - NOFORN
SECRET CHANNELS ONLY

(When filled in)

Page 1

Project: 8709
Date: 13 AUG 87
Session: 02
Source: 079

Start: 1007
Sanctuary: 1011
Target: 1013
Finish: _____

Coordinate: 13#7500 / 112794

Frontload:

THIS WILL BE A SECOND TRIP TO THE AREA WE WORKED LAST TIME. I AM INTERESTED IN THE OBJECT YOU DESCRIBED, THE HARD, WING, METAL OBJECT WITH WINGS.

Notes:

- ① ANOTHER GREAT WEATHER DAY, WARM, SUNNY, SLIGHT BREEZE, LOW HUMIDITY.
- ② NO KNOWN OR STATED INCONVENIENCES.

~~SECRET~~ - NOFORN
SECRET CHANNELS ONLY

(when filled in)

Draft: _____

SOURCE 079
13 AUG 87

I FIRST SAW THE OBJECT FLYING UP AND DOWN AND SIDEWAYS. IT WORKS IN A DIRECTIONAL WAY.

IN THE FIRST PORTION OF THE PLANE, I COULD SEE A LARGE, HEAVY ROTATING DIAL OR KNOB PLACED UNDERNEATH THE PLANE AND I SAW MEN HERE TWISTING AND TURNING IT. I THINK YOU CAN ENTER FROM HERE. I FELT THAT THIS DIAL OR KNOB SERVED THE PURPOSE OF A GATHERING PLACE.

ALSO IN THIS FIRST PORTION, I COULD SEE THE LARGE, FLAT, GLASSY SHEET HERE THAT SEEMED TO BE TRANSPARENT. THIS SHEET OF GLASS OR LIGHT WAS IN A SMALL AREA SITTING BY ITSELF. THIS DEVICE WAS FIXED IN PLACE AND SEEMED TO WORK AUTOMATICALLY BECAUSE THERE WERE NOT ANY MEN WORKING HERE. THIS DEVICE MOVES IN A SEMI-CIRCLE AND IT SCANS AN AREA AND IT SEEMED TO TAKE PICTURES. IT MADE A SOFT HUMMING NOISE. IT CAN PROCESS INFORMATION VERY FAST AND I RECEIVED THE IMPRESSION THAT IT SPITS OUT INFORMATION. THE INFORMATION IS NOT LOOKED AT HOWEVER, UNTIL THE PLANE IS ON THE GROUND.

I THEN RECEIVED THE IMPRESSION THAT THERE WAS A THICK HEAVY PART THAT CAN BE RAISED UP SOMETIMES THAT SITS UP NEAR THE WINGS. THIS PART WORKS INDEPENDENTLY FROM THE OVERALL SYSTEM OF THE PLANE AND CAN BE TAKEN OFF THE PLANE AND BE PLACED ELSEWHERE. THIS PART IS USED FOR SEEING OUT AND THERE IS A SMALL WHITE LIGHT THAT GIVES OUT CORRECT, PRECISE INFORMATION.

ALSO IN THIS FRONTAL PORTION OF THE PLANE, I COULD SEE THAT

ON THE EXTERIOR IT WAS SLENDER, SMOOTH, STRAIGHT UP AND DOWN AND EVEN. HOWEVER, THERE WAS AN OBJECT THAT SEEMED OUT OF PLACE. IT WAS LARGER THAN THE OTHER EVEN BUTTONS AND IT STUCK OUT. I THINK EVENTUALLY THIS WILL BE TAKEN OUT FROM HERE AND PUT ON THE TOP FRONT PORTION OF THE PLANE AND IT WILL BE SMOOTHED OUT. IT WILL LOOK BETTER.

IN THE MIDDLE PORTION OF THE PLANE, I KEPT SENSING A ROLLING UP OR A PULLING UP. THERE WAS A POWERFUL FORCE UNDERNEATH THE PLANE. IT WAS THICK AND SMOOTH ON THE EXTERIOR. THIS MIDDLE PORTION IS THE MAIN BODY OR MAIN FRAME. IT IS THE COMMAND AND CONTROL. THERE WERE HOLDING PINS PLACED WITHIN OR UNDERNEATH THE PLANE THAT KEEPS THE PLANE TOGETHER AND CAUSES THE PLANE NOT TO SHAKE. I ALSO FELT IN THIS MIDDLE PORTION THERE WAS AN ENERGY CONVERSION HERE. I COULD SEE MEN HANDLING A VERY SOFT, WHITE, AIRY SUBSTANCE. THE SUBSTANCE WAS COLORLESS AND ODORLESS. THEY MEN PLACED THIS SUBSTANCE IN TUBES. THE REASON IT WAS PLACED IN THESE TUBES WAS SO THAT EVENTUALLY THESE TUBES COULD BE FIRED SOMEPLACE OR LOCATED ELSEWHERE. I COULD SEE THE SUBSTANCE ENTERING THE TUBES BUT I NEVER SAW THE SUBSTANCE LEAVE THE TUBES. I THEN RECEIVED THE IMPRESSION OF AN INTENT TO SPILL.

WHEN THE PLANE IS FLYING, I COULD SEE THAT A LARGE OBJECT IS MOVED DOWNWARD INSIDE THE PLANE AND THEN IT DROPS OUT OF THE BACK OF THE PLANE.

I FELT THAT THERE WAS ONE MAN WHO WAS THE CONTROLLER OR COMMANDED THE PLANE. THERE WAS ANOTHER MAN WHO WAS ALWAYS MOVING AROUND LIFTING AND WORKING. I THEN SAW A THIRD MAN WHO WAS SINKING DOWN AND IT LOOKED AS THOUGH HE WAS STUDYING.

(2)

→ 137500 / 112794

★ THIS OBJECT GOES VERY FAST, ITS POINTED, DIRECTIONAL, UNDERNEATH IT IS A ROUND HOLE, MEN TWIST AND TURN THIS VERY HARD, VERY SLOW, MEN OPERATE THIS, THEY SIT AT CONTROLS, IT GOES UP, VERY FAST, TESTING, ENGINEERED, CHECKING, MAINTAINING, GOING UP COMING BACK, PLANS, HIGH UP PLANS. MEN WORK IT AND ARE SATISFIED, TAKING IT UP

→ LET'S LOOK AT THE OBJECT AGAIN - FRONT PART FIRST

★ AN OPENING, CIRCULAR, MAIN OPENING, CIRCULAR, SET WITHIN A FRAME, SQUARE THICK, MEN WORKING HERE, IMPORTANT, IT MAKES IT GO, THICK HEAVY PART THAT COMES UP, AT CERTAIN TIMES, IT PULLS UP, ROUNDED, SITS ON THE SIDE, THICK

→ DESCRIBE THE REASONS FOR THIS COMPONENT

★ THIS PART SEEMS TO OPERATE INDEPENDENTLY, FOR SEEING OUT, HAS ITS OWN BRAIN, IT CAN OPERATE ELSEWHERE, PUT HERE TO GATHER INFORMATION FAST AND AT DISTANCES, PLACED WITHIN, TAKEN OUT, LIGHT COMES FROM HERE, A SMALL WHITE LIGHT, ACCURATE, GIVING OUT CORRECT INFORMATION, PRECISE, SHARP,

→ CONTINUE TO DESCRIBE THIS FRONT PORTION OF THE WHOLE OBJECT

★ MEN WERE, A GATHERING PLACE, ACTIVITY HERE ALWAYS, SOMETIMES NOISY, DIRECT LIGHT FLOWING, COMING OUT FROM A FLAT SHEET, GLASSY, SITS BACK FURTHER, OPERATING OPPOSITELY, TURN AROUND, GOING ONE WAY BUT INTERESTED IN THE REAR, SCANNING OUT THE BACK, PICKING UP INFORMATION, ANGLES, DURING,

(3)

→ GLASSY FLAT SHEET

★ SITS IN THE BACK BY ITSELF, FIXED IN PLACE, DOESN'T MOVE, IT SITS THE OPPOSITE WAY AS THE ~~WALL~~ HOLE, KNOWS WHEN TO WORK BY ITSELF, LEFT ALONE, A SOFT HUMMING, IT GOES OUT, GATHERS, SEEMS TO KNOW WHEN TO DO THIS, SOFT HUMMING, COLLECTS UP, THERE'S A FOLLOW-UP TO THIS PROCESS AFTER IT WORKS, FOLLOW UP REPORTING, WORK GENERATED BECAUSE OF THIS

→ CONTINUE TO DESCRIBE THE GLASSY SHEET

★ ITS IN A SMALL, NARROW AREA, OFF TO THE SIDE IN THE REAR, SOFT SYSTEM,

→ SOFT SYSTEM - RAW DATA

★ THE NOISE IS A LOW, BUZZING NOISE, FROM THE SOUND IT KNOWS WHEN TO WORK

→ DESCRIBE TO ME THE SEQUENCE OF ITS WORKS

★ IT ROTATES, PROJECTS OUT, TAKES PICTURES, SCANNING AN AREA OUT, SNAPS, ROTATES HALF WAY, HALF CIRCLE, NOT A FULL ROTATION BUT ENOUGH, THEN IT STOPS, WITHIN THIS OWN AREA IT CAN PROCESS THE INFORMATION UP TO A POINT, IT CAN BE VERY FAST IN PROCESSING, SPITS OUT, NOT LOOKED AT UNTIL ITS ON THE GROUND, NOT LOOKED INTO, NOTHING, DONE UNTIL ON THE GROUND, THE AREA IS KEPT CLEAN, SMELLS NEW

→ FOCUS NOW ON THE MIDDLE PORTION OF THE WHOLE OBJECT

(4)

★ ROLLING UP, I'M UNDER, IT'S THE PULLING UP, THERE'S A POWERFUL FORCE UNDERNEATH IT, VERY POWERFUL FORCE, I CAN FEEL IT, HEAT, FLAT, ITS THICK AND SMOOTH ON THE EXTERIOR, COMMANDING, CONTROLLING, MEN,

→ STAY WITH THIS MIDDLE PORTION

★ ITS THE MAIN BODY, THE CENTER, CONTROL, ITS FLAT, SMOOTH AND ROUNDED, PAINTED

→ PAINTED RAW DATA

★ WHITE, SIMPLE, ITS SHARP HERE, THERE'S A HOLDING, LINES PLACED WITHIN, HOLDING POINTS, NOT MOVABLE

→ HOLDING POINTS

★ PLACED INSIDE, VISIBLE, PLACED TIGHTLY INSIDE, KEEPING THE OBJECT TOGETHER, HOLDING IT TOGETHER - ITS THE DESIGN

→ DESIGN

★ ITS THE DESIGN, THE PATTERN, IT CHANGES EVERY YEAR, MODEL NUMBER, STANDARDS, NO BIG DEAL, BUT ~~THE~~ IMPORTANT

→ MIDDLE PORTION

★ A SWOOSHING, MOVING IN A FAST CIRCULAR DIRECTION, HEAT UP, PROTECTED, PROTECTION, PROTECTING, THERE'S A CONVERTING THAT TAKES PLACE HERE, COMING DOWN, PLACING IN, THE MEN REACH UP AND PULL DOWN AND PLACE A VERY SOFT SUBSTANCE IN LONG TUBES, THESE LONG TUBES ARE SITTING, POINTING UP, THE MEN REACH UP AND PUT THIS LIGHT SUBSTANCE INSIDE, SAVING, THIS IS THE CONVERTING, IT STAYS HERE, ~~I~~ I DON'T SEE IT COMING OUT, A CLEAN ENERGY, THIS IS VERY NEW BECAUSE BEFORE THIS WAS BLACK DIRT, BUT NOT DIRTY NOW, THIS ~~IS~~ TAKES PLACE INSIDE

(5)

(CONTINUE)

★ THE MEN DON'T STAND ON THE FLOOR SOMETIMES, THEY HAVE BOOTS ON

→ TELL ME ABOUT THE SUBSTANCE,

★ ITS WHITE, AIRY, YOU CAN SEE THROUGH, YOU CAN PUT YOUR HAND THROUGH, WHEN YOU GRAB IT AND FORM IT, IT BECOMES DENSER AND THATS WHERE THEY PUT IT IN, THE MEN LAUGH ABOUT BECAUSE IT'S HARD TO CONTROL, THE MEN WEAR BOOTS

→ COME CLOSE TO THE SUBSTANCE - SMELL IT, TASTE IT

★ ODEORLESS, TASTELESS, GASEOUS,

→ THE PURPOSE OF THE SUBSTANCE

★ TO FIRE INTO, TO PUT SOME PLACE, TO LOCATE IT SOMEPLACE, SPILLAGE WITH INTENT

→ DESCRIBE THE EFFECT OF THIS SPILLAGE

★ THE MEN WEAR PROTECTIVE GEAR, THEY KNOW THEY HAVE TO DO THIS, ITS WILL BE HARMFUL, LARD,

→ DESCRIBE THE MIDDLE PORTION -

★ GEARING, ROLLING UP, SMOOTH, POWDERFUL, CERTAIN PARTS KEEP THE STRUCTURE TOGETHER, HOLDING PINS, MAIN FRAME PARTS, THE REGULAR PARTS LOOKING LIKE OTHERS ARE HERE, INNER WORKINGS OF OBJECT ARE HERE, MEN CHECK THIS AREA OUT TO MAKE SURE THE OBJECT RUNS OKAY, MEN ROLLING UP -

→ FOCUS NOW ON THE BACK PORTION

(6)

★ CAN I SAY SOMETHING

→ YES

★ WHEN THIS THING IS THE AIR HALF OF IT DROPS OUT, DROPS OUT FROM THE BACK, SHOOTS OUT FROM THE REAR, HEAVY LARGE OVAL PART DROPS OUT, THE THIRD PART IS THE BASE, ITS THICKER, THIS IS THE ---- I DON'T KNOW. WHEN ITS MOVING I GET A BETTER VIEW -

→ OKAY

★ IT FLIES UP THEN SOMETHING INSIDE DROPS OUT. ITS BIG, HEAVY, OVAL AND IT DROPS OUT. THIS SURPRISES ME BECAUSE ~~I~~ I DIDN'T SEE THIS BEFORE. THIS IS THE LAST ACTION. BEFORE THIS THE SCANNING TAKES PLACE, THE SEQR, BEFORE THIS ALL THE WORK IS DONE - THE SUBSTANCE, IT DOES SOMETHING TO MY THROAT, IT PINCHES, NOT NICE

→ CONTINUE TO DESCRIBE THE OBJECT AS IT FLIES

★ WHEN IT MAKES THE DROPPING IT HAS TO FLY STRAIGHT, NOT UP OR DOWN, ITS CONCERNED WITH DIRECTIONS, ITS POWERFUL, FAST AND DOES A LOT OF JOBS IN THE AIR. SCANS, TAKES PICTURES, SO MUCH, MEN STUDY AREAS WHILE FLYING INSIDE IT, OPERATING. ITS BIG AND HEAVY, A LOT OF WORK, ~~IT~~ IT TUMBLES AND FALLS, LIFTS UP AND DOWN, MEN STUDY WHILE THEY WORK.

→ SOMETHING IS SPECIAL ABOUT THIS FLYING THING

★ ITS THE FRONTAL PART. THE WAY IT LOOKS. ITS APPEARANCE THE BUTTONING, ITS SLENDER, IT COMES STRAIGHT UP AND DOWN EVEN. ON THE SIDE IT MAKES IT LOOK DIFFERENT. BIGGER THAN THE OTHER PARTS. THIS IS REFERRED TO AS "THE FLOWER" ON THE FRONT PART. IT LOOKS LIKE IT DOESN'T BELONG THERE. ITS BIGGER, THICKER, STICKS UP, STICKS OUT, TRYING TO EVEN IT OUT, ~~they~~ they may move it up ~~higher~~, on top and over to even it out, they need to smooth it out

(7)

- SOMETHING IS SPECIAL ABOUT THIS FLYING THING SOMETHING UNUSUAL
- ★ THE LONG TUBULAR PIPES, THEY'RE BEING ATTACHED INSIDE
- INSIDE NOW - DESCRIBE THE FUNCTIONS OF EACH MAN - MAN #1
- ★ THE DRIVER, THE CONTROLLER, ONE MAN IS UP ALL THE TIME, MOVING ALL THE TIME -
- MAN #2
- ★ HE'S UP ALL THE TIME, LISTENING, SHIFTING, MOVING A LOT OF WORK
- MAN #3
- ★ HE SITS, HE READS, HE HELPS THE FIRST MAN
- MAN #4
- ★ NO MORE.
- DESCRIBE THE PURPOSE OF THIS OBJECT
- ★ DRIVE FASTER, TO PICK-UP DROOP - TO BE ABLE TO RUN
- YOU TOLD ME BEFORE THIS IS VERY SECRET, DESCRIBE TO ME THE REASONS FOR BEING SECRET - ASK SOMEONE
- ★ TO PINPOINT EXACTNESS, TO BE EXACT, LAST, NOT FINISHING,
- SOMETHING ABOUT THIS OBJECT IS VERY SECRET, DESCRIBE TO ME (NO SECRET)
- ★ FRIDAY KEPT IN A LARGE --- PUBLIC IS AWARE OF IT, AN IDEA ABOUT IT, THE SCRAMBLING AND THE MIXING, THIS OBJECT --- THERE'S A HIGHWAY NEARBY -

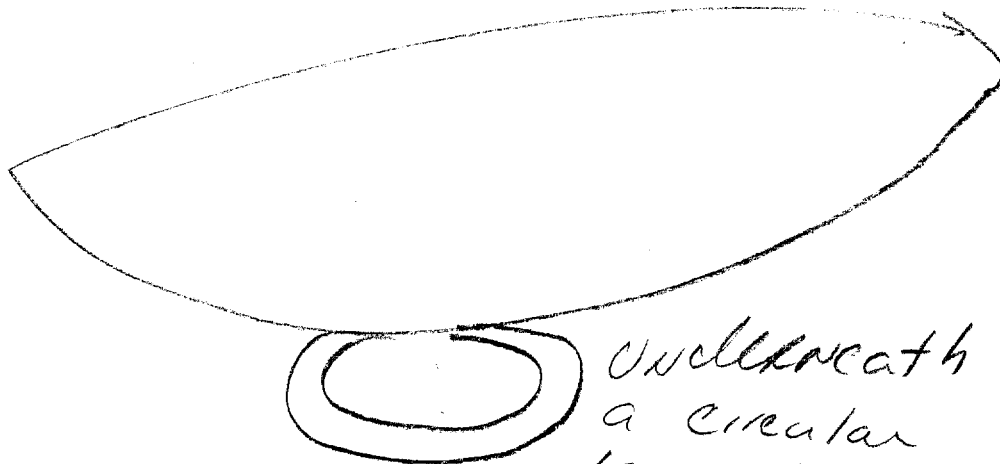
⑧

→ THAT'S NOT MY QUESTION - THE THING THAT MAKES IT SO SECRET

★ I KNOW WHY - WE DON'T KNOW THE INTENTIONAL PURPOSES -

→ A Pause - return now to your reading -

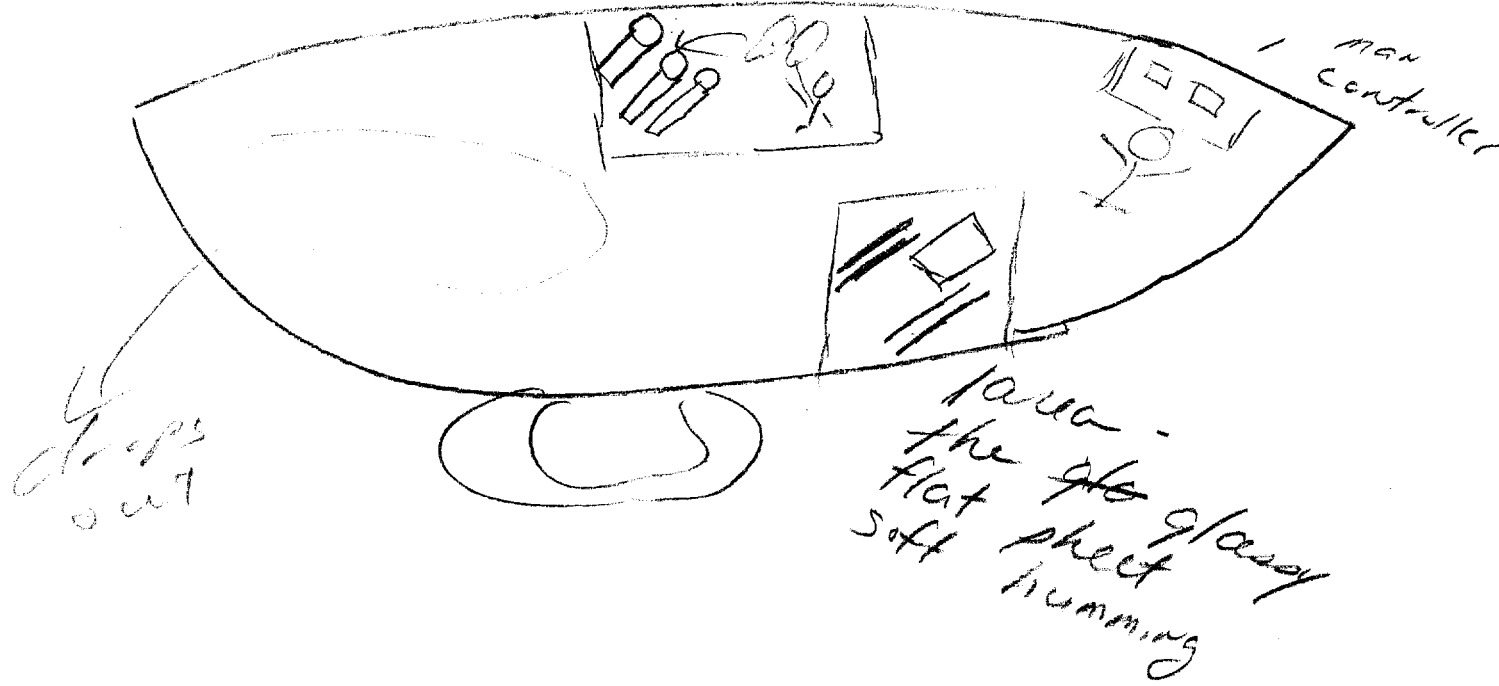
1st part

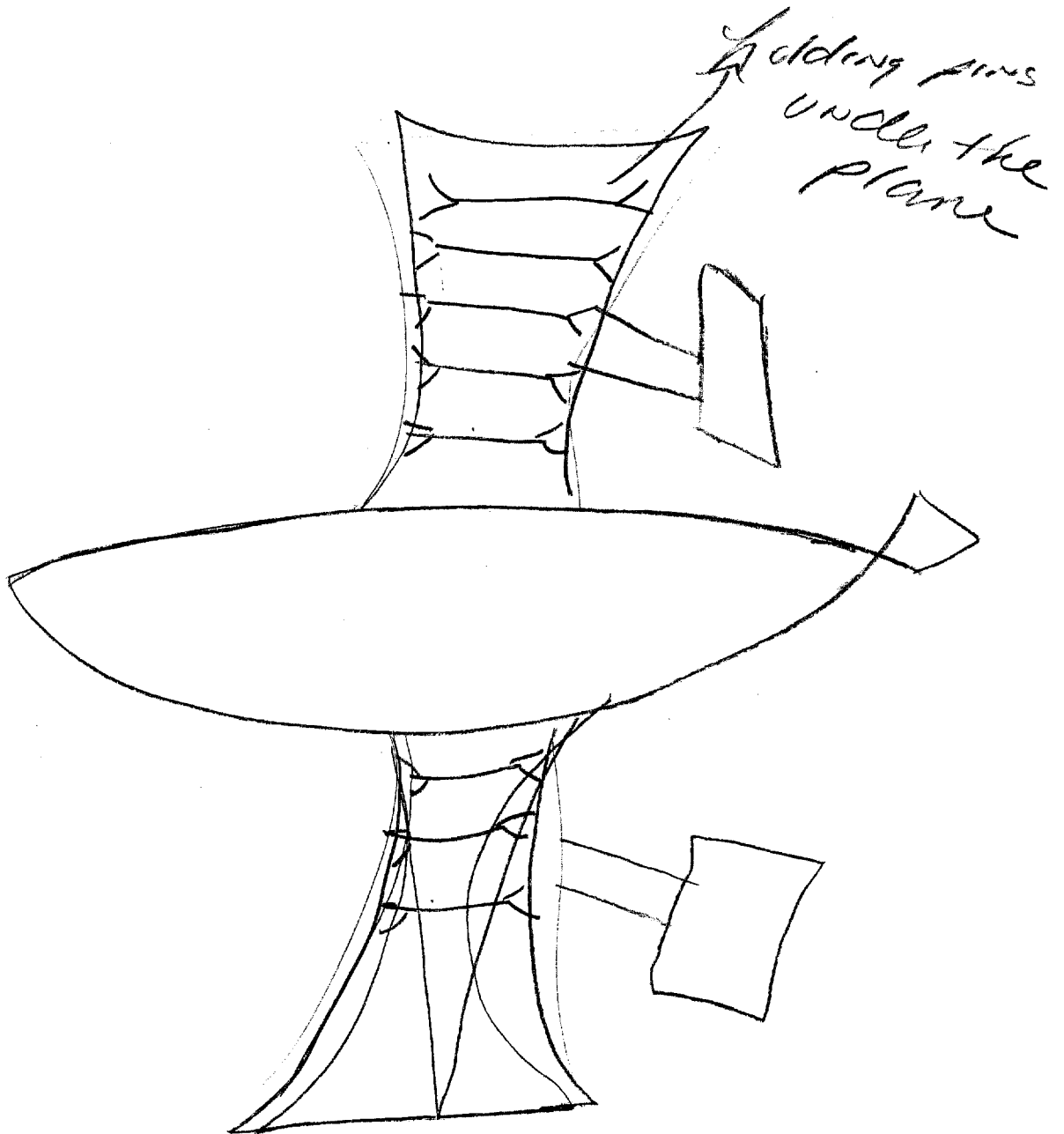


Underneath
a circular
large heavy
Rotating
dial or knob
men can enter
from here.

grid part

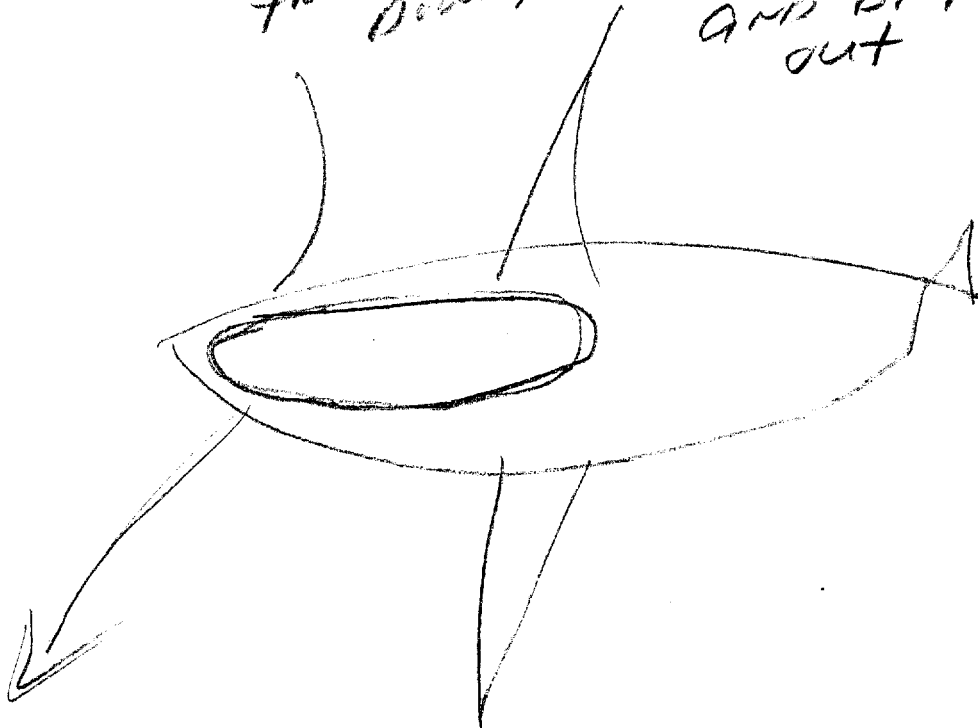
large area

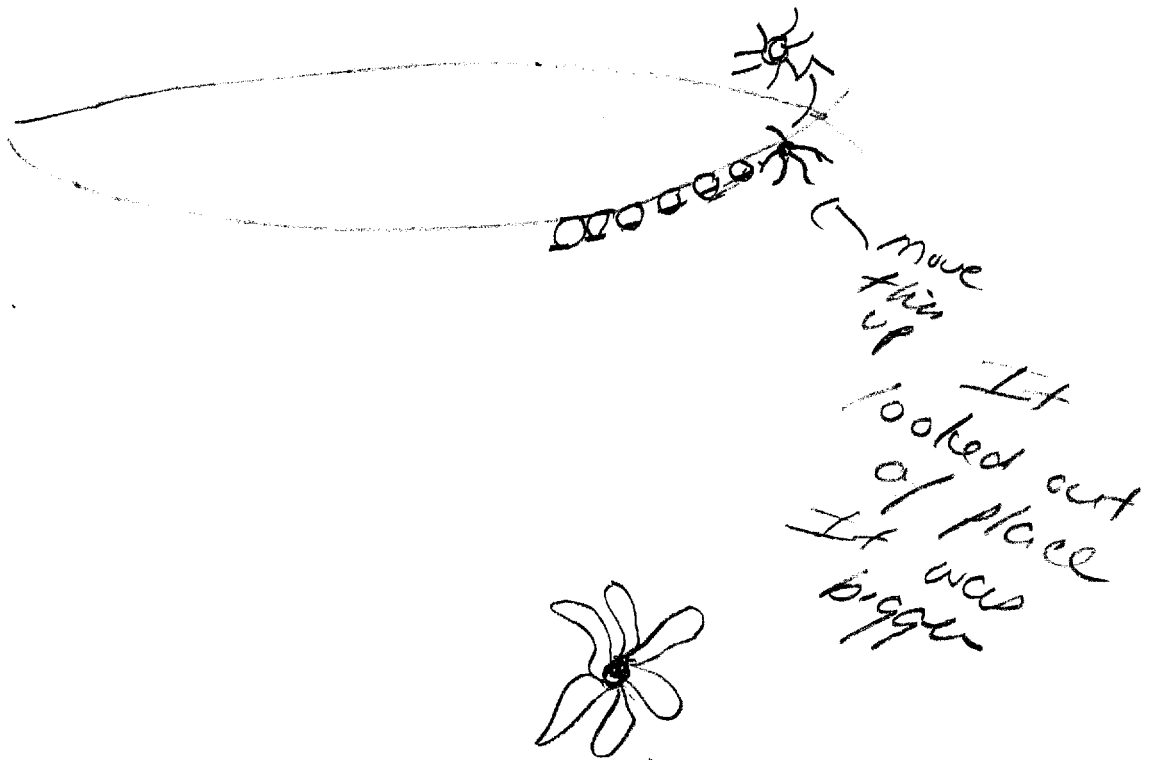




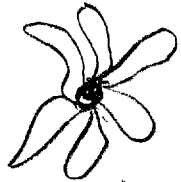
079
141

this dropped
down, came out
the rear
and dropped
out





move this up
It looked out of place
It was bigger



Will make it look like this.