

~~SECRET~~/NOFORN

PROJECT SUN STREAK

WARNING NOTICE: INTELLIGENCE SOURCES AND METHODS INVOLVED

---

PROJECT NUMBER: 9006                      SESSION NUMBER: 02  
DATE OF SESSION: 1 MAR 90              DATE OF REPORT: 1 MAR 90  
START: 0715                              END: 0800  
METHODOLOGY: SOLO                      VIEWER IDENTIFIER: 095

---

**SG1A**

1. (S/STD) MISSIONS: Determine the current location of a vessel identified as the  suspected of transporting illegal drugs. Determine where the drugs will be unloaded. Describe how the drugs are packed and where they are stored aboard ship.
2. (S/STD) VIEWER TASKING: Determine and describe how the illegal drugs are wrapped and where they are stored aboard ship.
3. (S/STD) COMMENTS: No inclemencies noted. A Summary of Information is attached to this report.
4. (S/STD) EVALUATION:
5. (S/STD) SEARCH EVALUATION:

HANDLE VIA STIPPLE CHANNELS ONLY

~~SECRET~~/NOFORN

CLASSIFIED BY: HQDA (DAMI-PO)  
DECLASSIFY ON: OADR

This document is made available through the declassification efforts  
and research of John Greenwald, Jr., creator of:

# The Black Vault



The Black Vault is the largest online Freedom of Information Act (FOIA) document clearinghouse in the world. The research efforts here are responsible for the declassification of hundreds of thousands of pages released by the U.S. Government & Military.

**Discover the Truth** at: <http://www.theblackvault.com>

~~SECRET~~ / STD

WORKING PAPER

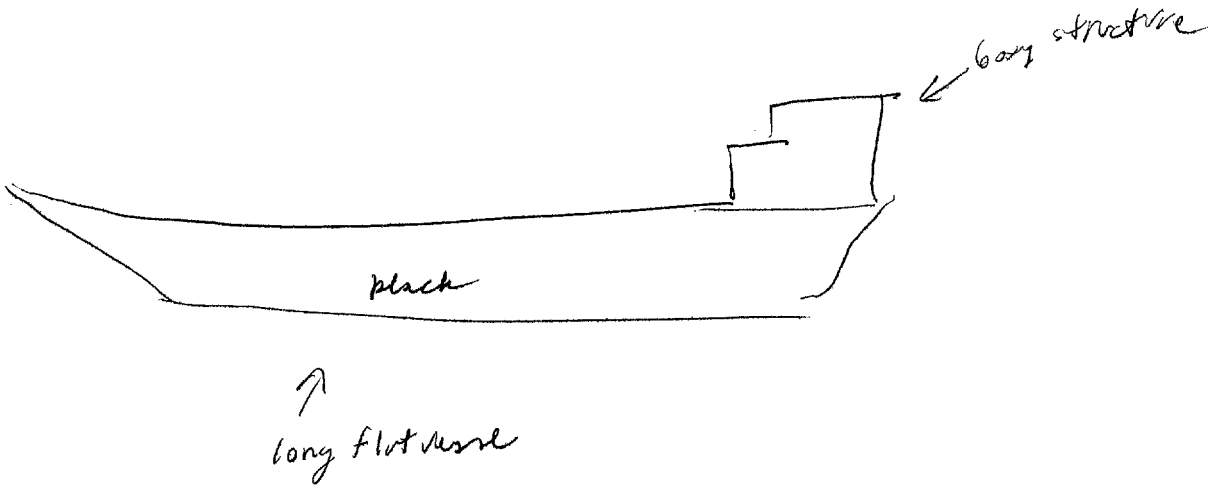
P: 9006  
V: 095  
D: 900301  
T: 0715-0800  
S: 02

SUMMARY OF INFORMATION

The vessel is a long, flat, black vessel with a boxy structure near the stern. The vessel is carrying medium sized, flat ended cylindrical containers. These are less than 2 feet high and less than 1.5 feet in diameter. The containers can only be opened once hence only a small fraction are checked by customs. The containers held a very thick liquid with solids (fist sized & smaller) suspended in it. The vessel is carrying a number of these containers which are arranged on rows on board. The contraband is hidden some of these containers. It is white, solid and in plastic bags the size of 2-5 lb sugar bags. One of these bags is in the bottom of a number of these cylindrical containers. Less than 1/3 of the containers have contraband in them. When looking at the arrangement of cylinders the second container from starboard in the second row from the bow has contraband in it. The containers containing contraband are (look, weight, labels, marks etc.) identical to those which don't. The only way anyone can tell which contains contraband is by how they are arranged on board.

HANDLE VIA STIPPLE CHANNELS ONLY

~~SECRET~~ / STD



easy to find  
containers  
with contraband

