

PT - agitation at  
descriptions (human type)

F

5 Jul 90

AV - vessel

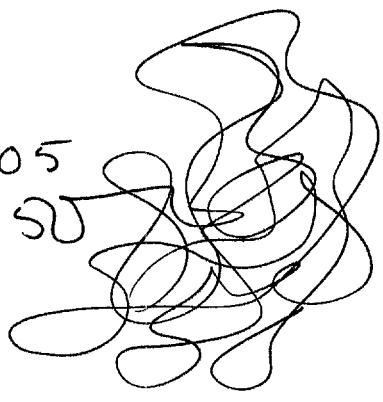
JTF-4

0050

SEL

1320

900705  
900050



MISS BK  
confusion BK  
Brain dump BK

This document is made available through the declassification efforts  
and research of John Greenewald, Jr., creator of:

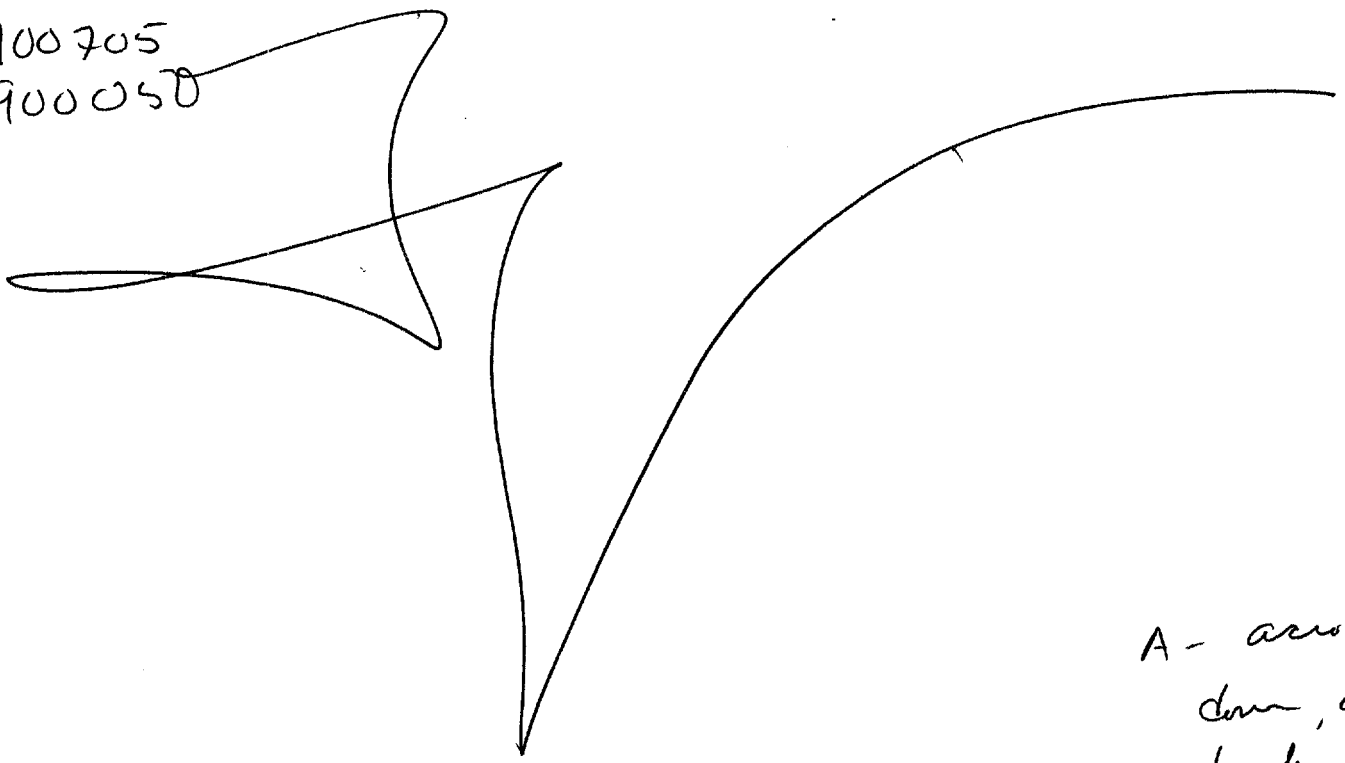
# The Black Vault



The Black Vault is the largest online Freedom of Information Act (FOIA) document clearinghouse in the world. The research efforts here are responsible for the declassification of hundreds of thousands of pages released by the U.S. Government & Military.

**Discover the Truth** at: <http://www.theblackvault.com>

900705  
900050



A - across, a ge  
down, a ge  
back, a ge  
forward, a ge  
down, a ge  
up, curve  
forward  
- hard  
- mammal  
B - structure  
As BK  
Steel panel  
A - hollow  
B - air  
A - water  
way  
- natural  
B - water

AI BK  
Makes my eyes hurt.

3)

52  
Khaki fan  
White  
ribbed (su)  
draglines

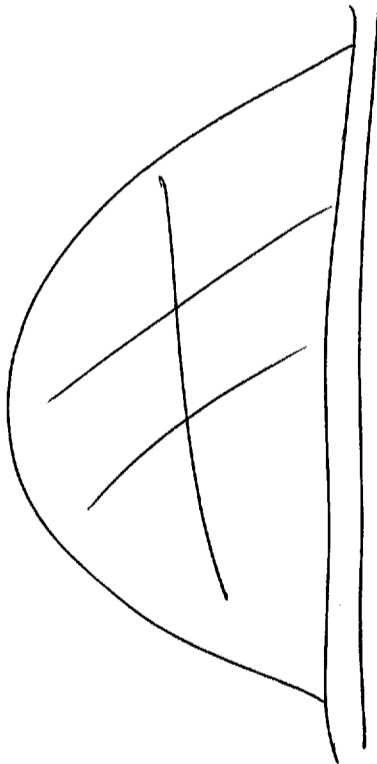
A - soft  
- mammals  
B - structure

Curves  
puffy  
bellows (su)

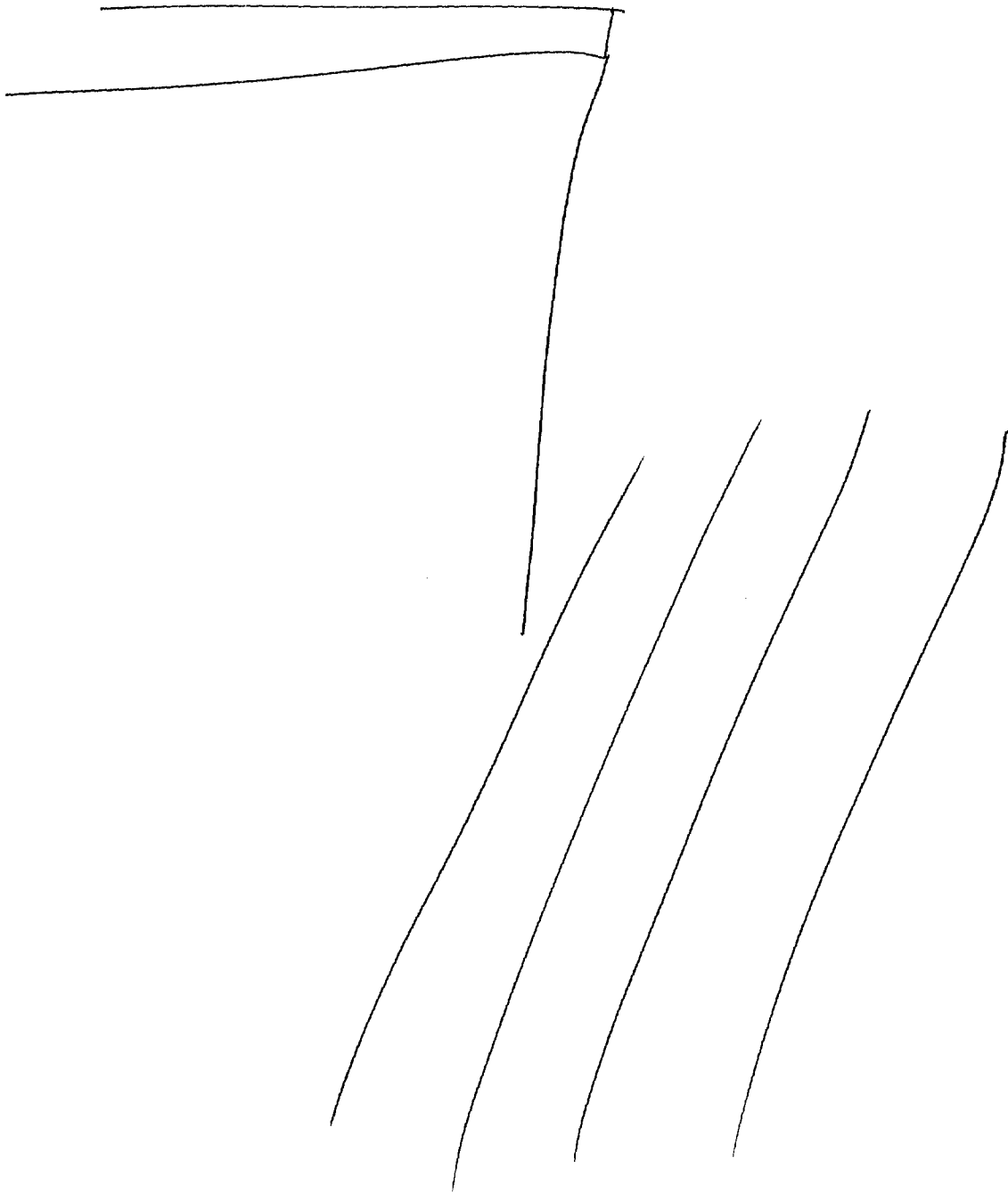
Asc BK  
Sails

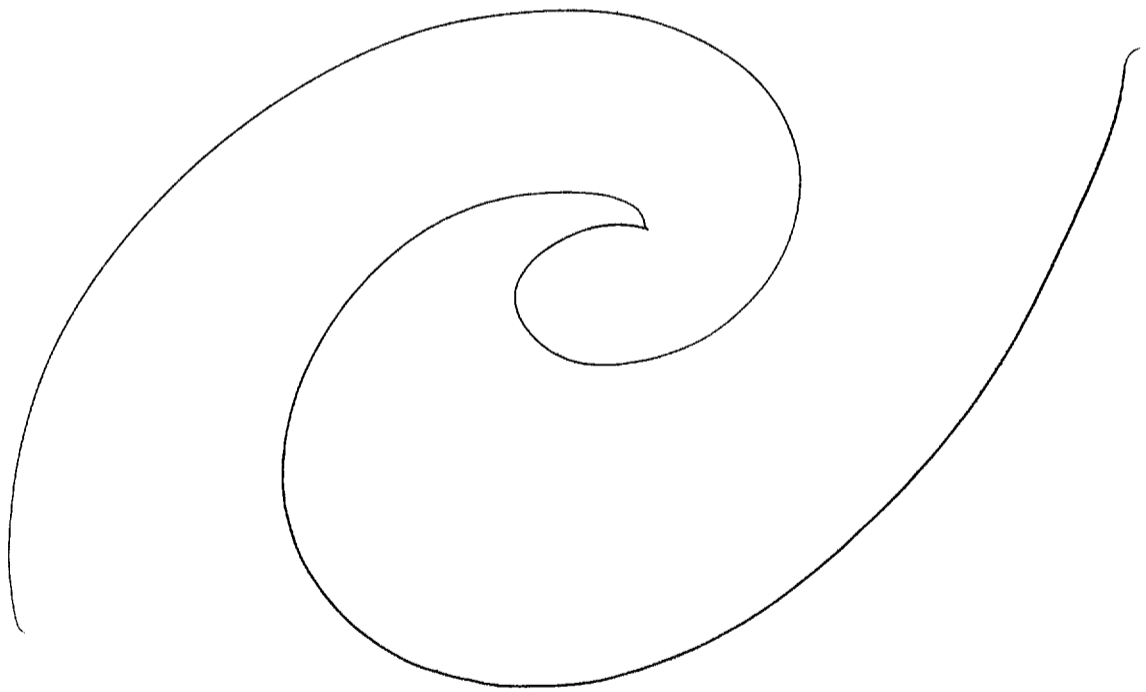
angles  
sharp angles  
stale wood smell  
bitter sweet taste  
woody feelings (su)

Asc BK  
Sails again



Asc BK  
Wooden sail  
boat





SZ  
Crimson  
red  
green  
yellow stripes

D

AI

ET

T

I

AOL AOL/S

small

AOL/S  
Sailboat

wooden

black rubber  
poles

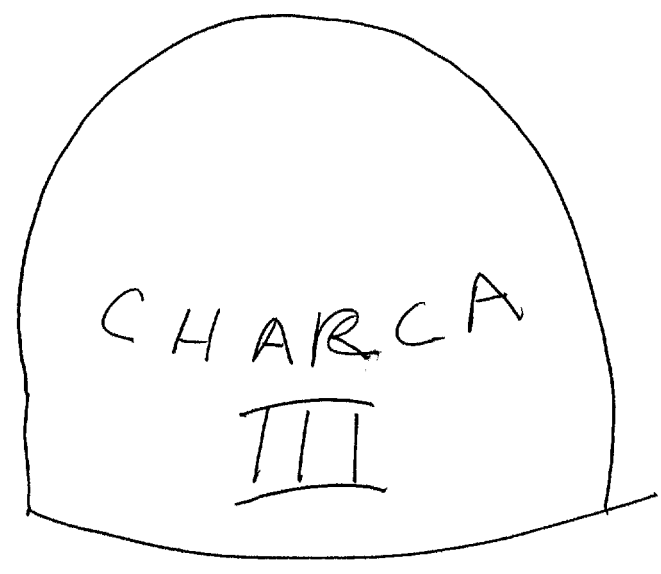
round  
flat  
parallel lines

Varnished

shiny

Clean  
rough ocean

AOL sketch



7)

52

D

AT

ET

T

I

AOL

AOL/S

[Narcotics on board?]

yes

[cocaine?]

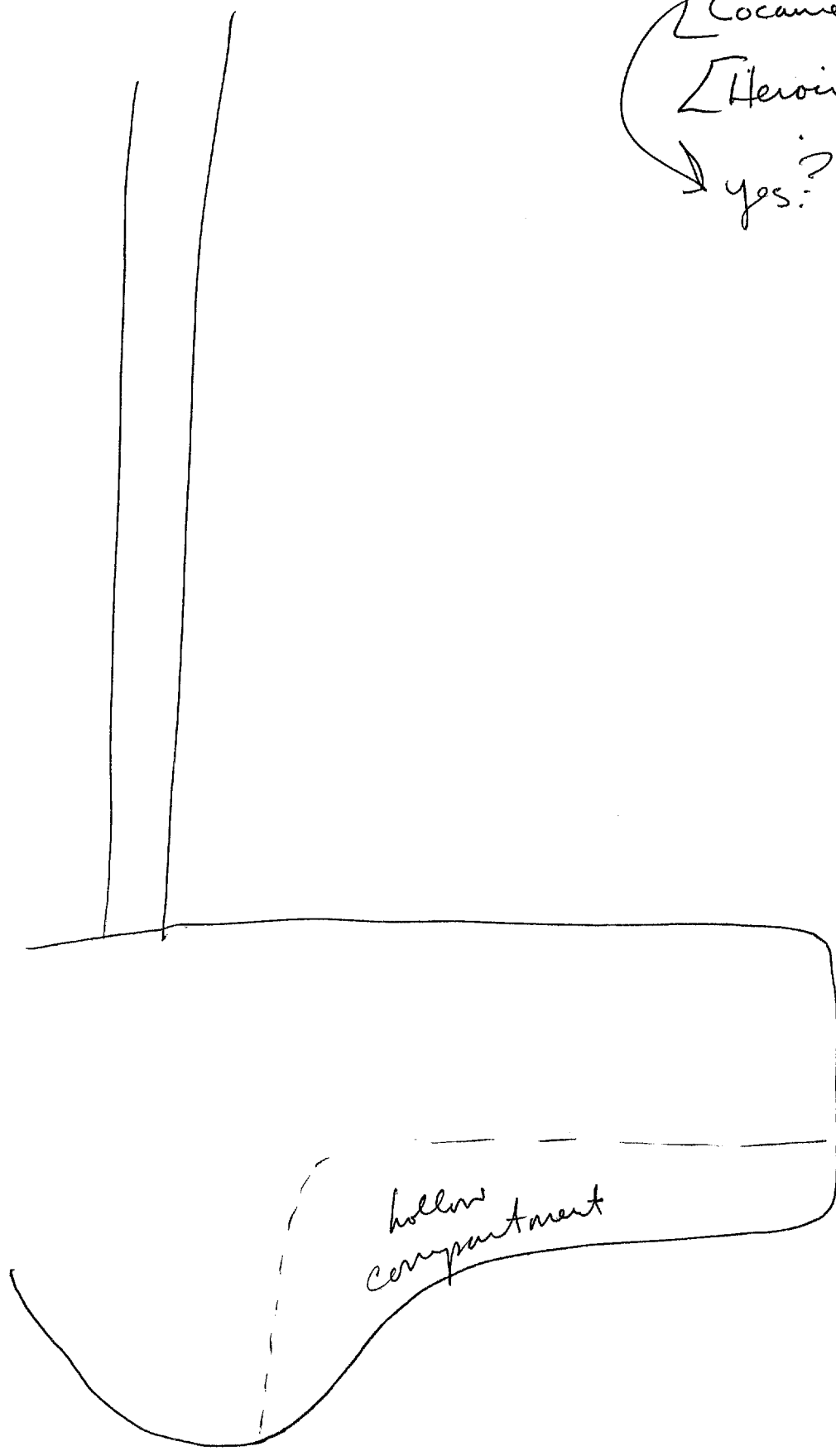
[Pot?]

[Pills?]

[Cocaine?]

[Heroin?]

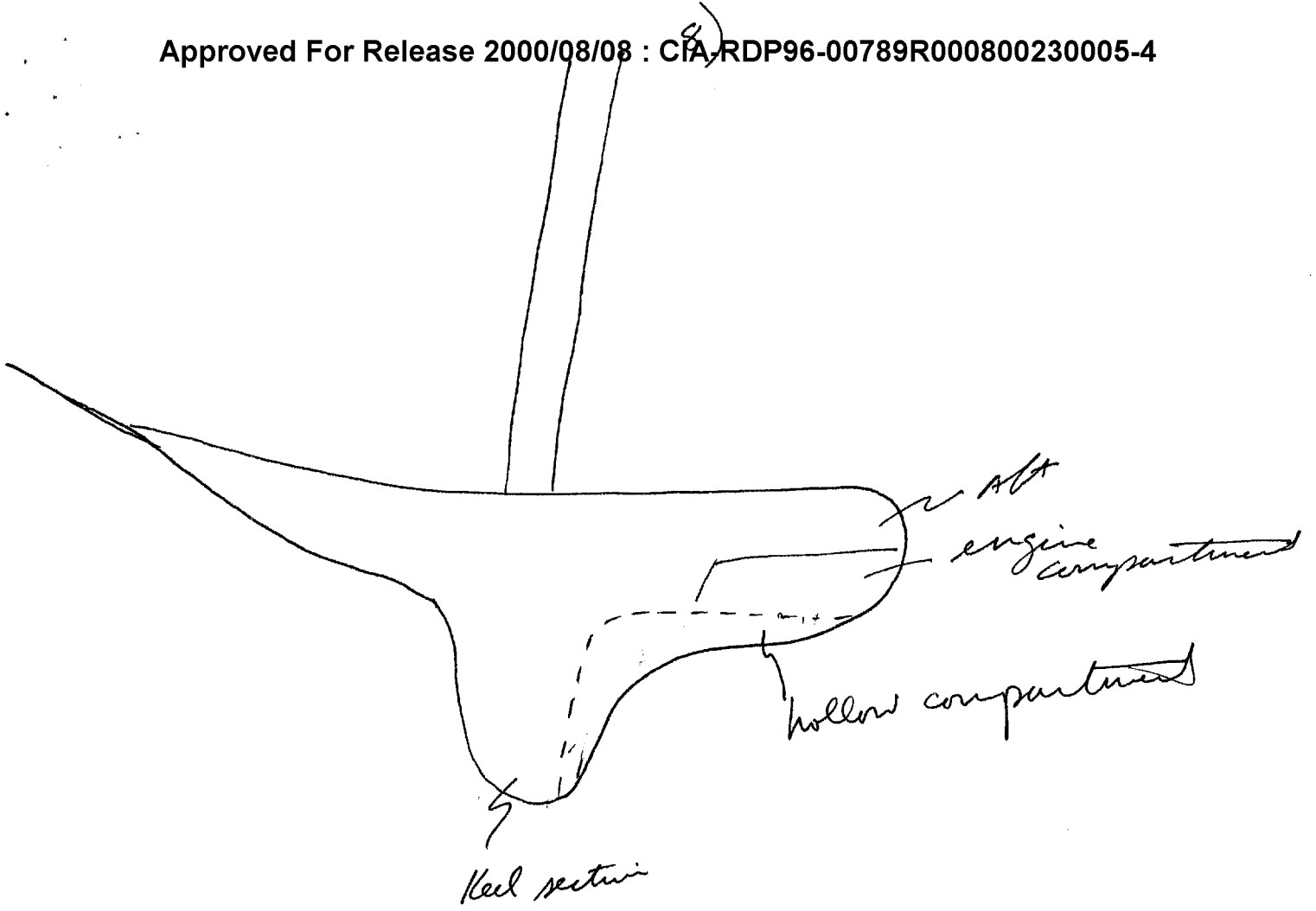
yes?



AOL BK  
Softball sized  
lumps of coke

Round balls  
of coke stashed  
w/i Mast of  
ship.





52

D

AI

EL

T I

Ac

Ac/S

[Type, size, characteristics]

dense  
hard packed  
rectangular

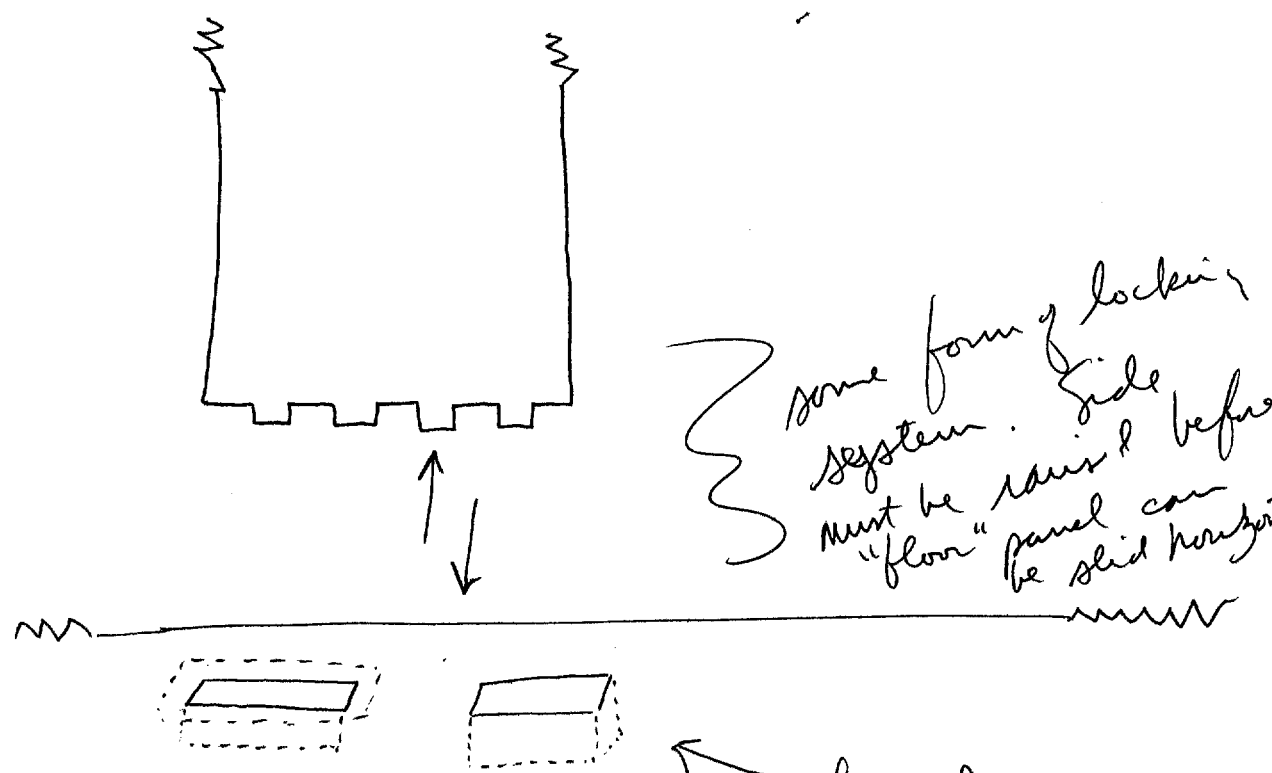
tape

light red  
light blue

54 1/2 There is a sliding panel a door  
which gains access to the compartment.  
Blends in well. Extremely hard  
to tell; slides horizontally over keel.  
Seamline

54 1/2 quite a process to access  
compartment. Necessary to remove  
or move something else.

walls  
wired panels



Brink  
1353

[Other vessels?]

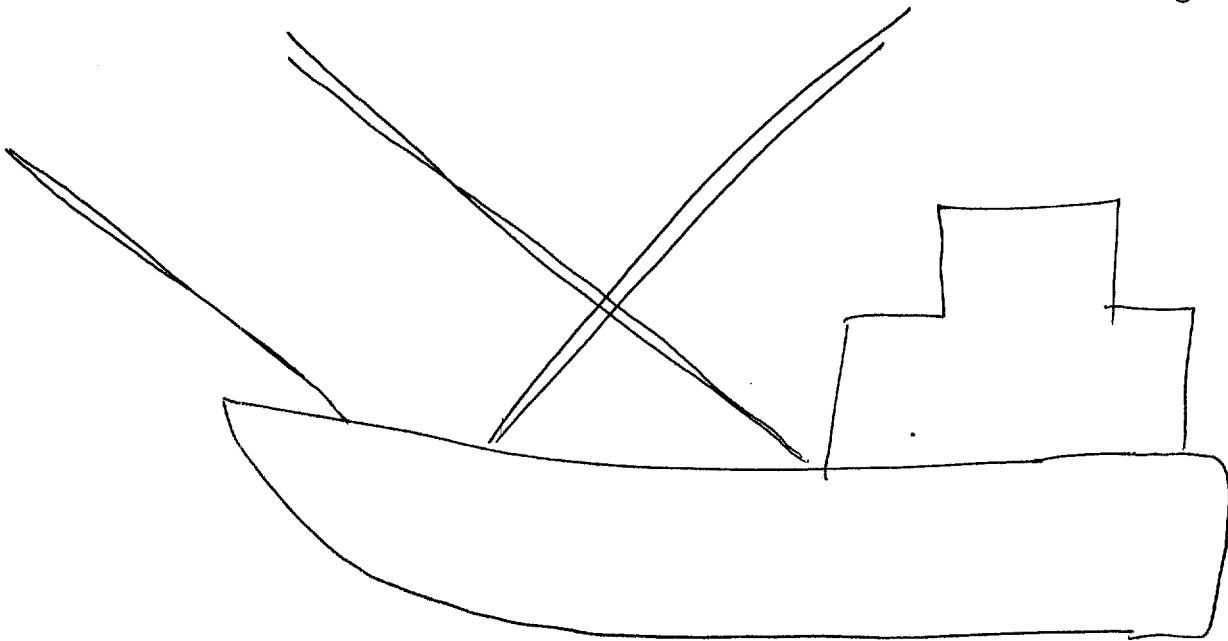
Yes

metal hulled

fishing

AvC/S

fishing boat



AvC/S

Trawler

[name]

CHARLES III

CHARCAS III

CHARLOTTE III

hauling

moving

baskets  
nets

fat man

:52: D AI EI T I AC AC/S

smokes cigars

AI BK transfers  
Makes me sea sick

night time

red  
light

cons.

blue

AC  $\frac{1}{2}$  BK  
Blue coffee  
can

17th July

1446