

SESSION INFORMATION

- A. TARGET DATA:
 Task/Target No. : 91-13
 Session No. : 1
- B. PERSONNEL DATA:
 Source No. : 018
 Monitor's No. : 370
 Beacon/Sender No. :
- C. SESSION DATA:
 Date Task Received : 31 OCT 91
 Session Date : 31 OCT 91
 Start Time : 1047
 Stop Time : 1138
 Method used : CRV
 Aids/Distractions (PIs) :
 Pre-session hunches (AVs) :
 Date Summary Returned : 31 OCT 91
- D. EVALUATION DATA:
 Viewer's Estimate : Medium
 Evaluator's Estimate :
- E. SESSION SUMMARY:

Site appears to be a long, rectangular one story building in an area of similar buildings, with all the land in between the buildings paved. The target structure is some distance away (possibly 2 or 3 blocks) from a body of water, but the entire district is directly associated with the water area (like a port or harbor area).

The inside of the structure is clean, well lit, spacious and airy. There are all types of containers sitting around on the floor, and a motorized vehicle (fork lift?) brings new ones in and takes old ones out every now and then. There was the impression that the containers consist of boxes, barrels, etc., with only a very few of each type. These are not whole shipments, but appear to be samples of containers taken from larger shipments which are located in other buildings. The containers are "worked on", then returned to their original locations after 0-2 days time.

There are 5-8 people in the target structure, all males, with light, possibly yellowish skin. They are small, casually dressed, and of slight, wiry stature. "Work" on the containers which are brought in consists of opening each up, rummaging through the contents, usually placing something within the contents, sealing the container back up, marking an "X" on it in grease pencil, and moving it to the side to await return to its original location. All activities are well organized, smoothly run, and not hurried.

The items perceived as being inserted into the shipments were

This document is made available through the declassification efforts
and research of John Greenewald, Jr., creator of:

The Black Vault



The Black Vault is the largest online Freedom of Information Act (FOIA) document clearinghouse in the world. The research efforts here are responsible for the declassification of hundreds of thousands of pages released by the U.S. Government & Military.

Discover the Truth at: <http://www.theblackvault.com>

a package of diamonds inserted into a container of clothing and several stacks of paper money being inserted into some leather goods which appeared to be shoes, boots, or purses (small leather items, not leather clothing).

31 OCT 91
1047 HRS
FR. MEAS
370

P.L. NONS
A.V. NONS.

91-18

A: RISING
CURVING
LOOPING
SMOOTH
B: MOTION

A: HAND
AND
DOWN
B: STRUCTURE

91-18

A: ACROSS
HAND
SMOOTH

B:

A: HAND
UP
STOP
HAND
DOWN

91-13

A: ACROSS
HAND
SOME-SMOOTH.

B: _____

91-13

A: ACROSS/
RISING
CURVING
SMOOTH

B: _____

SZ: SMOOTH
WARM
FORCES

ACROSS
FOOLS LIKE
CONTINUING
FORCE, LEARNING
OUTWARD ON
A CURVE.

3

~~91-13~~

A: MISSING
SHEET
TRAIL
UNUSUAL

B: STRUCTURED

SL: FLAT
HIGH
LANES
GRAY
WHITISH
UNUSUAL COLOR
ANGLED

SLATE FEEL

FOR INFO.
LIKE SLATE
ROOF TILES.

(+)

S2: .6207
VERTICAL
LINDO

AN AK.
WAREHOUSE.

S2: COOL
CLOUDY LIGHT.
OUTSIDE

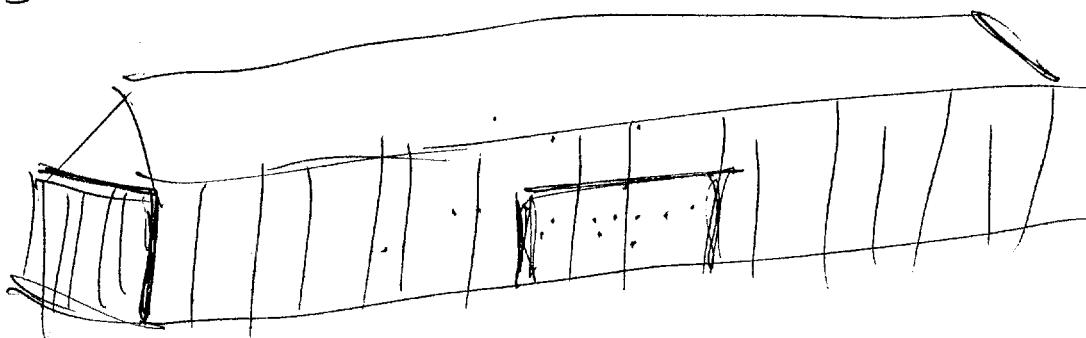
AK AK
SOUTH WAREHOUSE

AK AK.
LONDON HOUSE

5

S2: CROWDED
CLOSE IN (S4)
TALL
WIDE
LONG
SOUND
RECTANGULAR.

S3:



DOOR ON SIDE.

S2: DEEP SOUND,
RUMBLE.
QUIET.

(C)

SZ: PROPIUS SOUNDS,

MACE

HAMMERING

AD ME

VISUAL:

MAN BANGING
TOP DOWN ON
A BARRER.

LIGHT SKIN

(S4)

CASUAL DRESS

(S4)

COOL

OPEN

COOL AIR.

AD ME

SOUTH AMERICAN FDR.

AD ME

SOUTH AMERICA

AD ME

2

S 4 1/2

SURROUNDINGS:

OTHER SIMILAR STRUCTURES

ALL TRACKS
LIKE A
WAREHOUSE AREA.

PAVED

TREES

NO FENCE

ALL TRACKS
DRUG PROCESSING

8

SZ D RI OR T , RBL als.

(STRUCTURES
INSIDE)

(PURPOSE)

STORAGE
WORK.

CLEAN

WELL LIT

SPACIOUS

AIRY

OPEN

COOL

FLAT

ONE-STORY

PLEASANT

BUSY

ORGANIZED

RI RBL
IMPRESSION BY
CLEAN LINES &
BRIGHT LIGHTING.
INSIDE

9

S2 0 M 0 T , A/C A/C
(STRUCTURE)

LOUD
WHITISH
VERTICAL LINES
LONG
BIG
TALL
RECTANGULAR.

BUSY
ORGANIZED
HAPPY

LAUNCHING SOUNDS
SIGNALS SOUNDS.
NUMBERS SOUND

A/S.
LIKE A BEE
MOTOR.

10

SZ O RI O F , ROR Als.
PEOPLE

MALU
TAIN
SMALL
WIRY

LIGHT SKINNED
YELLOW SKINNED

~~AI BAK~~
~~SUSPICION~~
~~WOLVES~~

~~AM BAK~~
ORIENTAL

(PEOPLE)

8-7-5 (ARMS)

(ACTIVITIES)

MOVING THINGS
ORGANIZING THINGS

(11)

RAA ONE
FLOODING VISUAL:
LOADING & S.O.P.

SL D RL or T-1 RAA A/S,
(ACQUISITION)

TURNING BANDS UP
TO. ROLL THEM AWAY

COOL TEMPS
OVERCAST SKIES
COOL AIR.
FRESH AIR.

~~VI~~ SMALL

(SMALL)

WORK SMALL
SLIGHTLY
UNUSUAL

SLIGHTLY SMOXY

PLEASANT

A/S.

KEEP NEW
CARD BOARD

S2 O M O T I ARE ALS
(ACTIVITIES)

ALS.

VISUAL:

FORK LIFT IN
OPEN POORWAY.

SAME W/1 SMALL

MOVES TO 1000 FT ABOVE TARGET.
TARGET SHOULD BE VISIBLE.

S2 O AL O T I ARE ALS
CRASH
CRASH ON CRASH
FLAT

LOTS OF
STRUCTURES

56:

(505 P. 13A)

13

52 0 M or ✓ , in Als

① TIMBER BLOCKS.

② OTHER BLOCKS.

③ JAGGED LINE -
ANCHORS + SPOUNES.

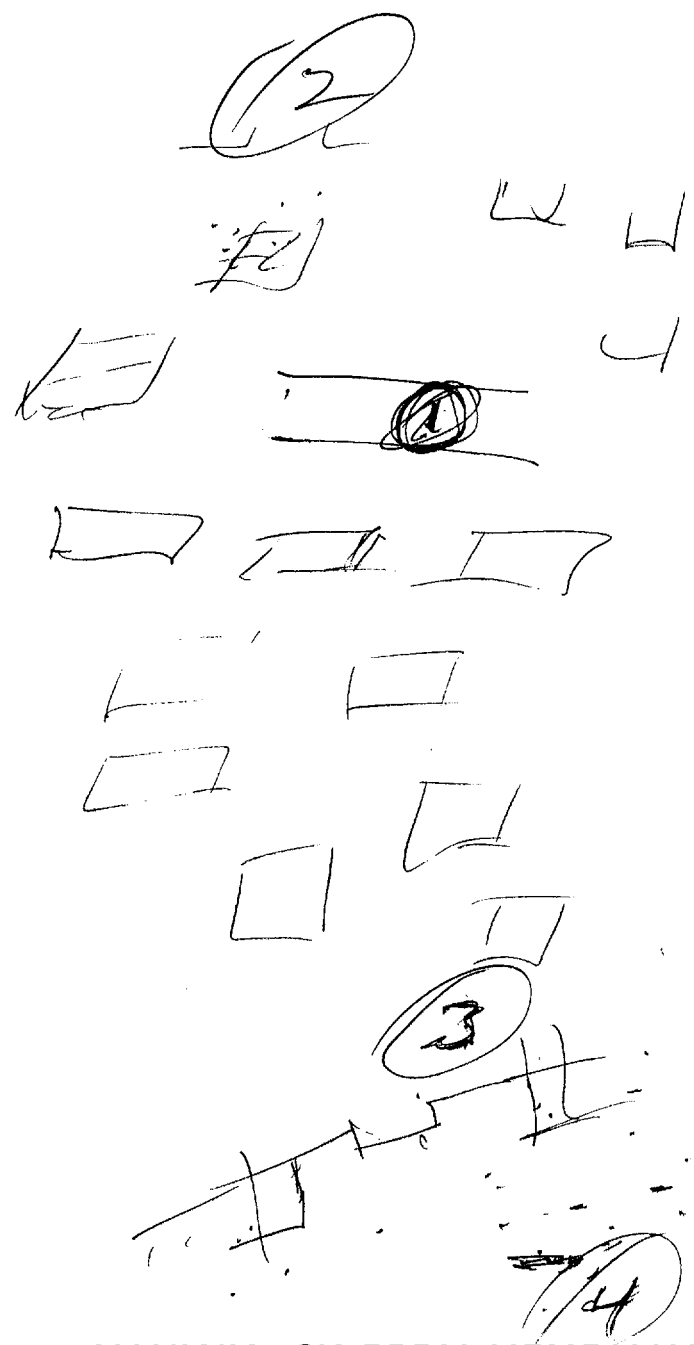
UNOWN

④ WATON

⑤ A/S HARBOR
DOCKS
ETC.

(558 P.113)

13A



INTONIA Summary

(14)

TARGET IS A LONG, 4-STORY
STRUCTURE w/ VERTICAL BANDS ON
SIDES. IT IS LOCATED SOME
DISTANCE AWAY FROM A WATER
AREA, BUT IN A DISTRICT WHICH
IS ASSOCIATED WITH THE WATER
AREA.

ACTIVITIES WITHIN THE TARGET
STRUCTURE: CONSIST OF MOVING THINGS
AROUND, STORING THINGS, OPENING &
CLOSING THE THINGS THEY MOVE AROUND.
5-8 MALES, CHORFUL, SPACIOUS, ~~ALSO~~ AIRY
WORK AREA IS WELL-LIT AND CLEAN.

IS THERE A CONNECTION BETWEEN
THE DRUGS & SURROUNDING STRUCTURES? (15)

SZ O R U O T I AN ALS.
(CONNECTION)

S4 1/2 "THINKS" INDIVIDUALLY
BUT BROUGHT FROM
THE OTHER STRUCTURES, WORKED
ON, STORED FOR A VERY SHORT
TIME, THEN RETURNED TO THE
OTHER STRUCTURES.

AN MK.
INSERTIVE DRUGS
INTO CONTAINERS.

more to "worked on" "things" 116
and describe.

SZ O A S T, all abs.
(Samples).

LARGE
ROUND
SQUARE
ALL DIFFERENT TYPES
SINGLE
SMALL #S OF EACH

S4 1/2 AM NOT GETTING "SHIPMENT" SIZE
QUANTITIES OF ~~ANY~~ PARTICULAR TYPE
OF "THINK", ONLY A FEW OF EACH.

S4 1/2 IMPRESSION OF STORAGE TRAY
OF O - 2 DYES/NUCLEI.

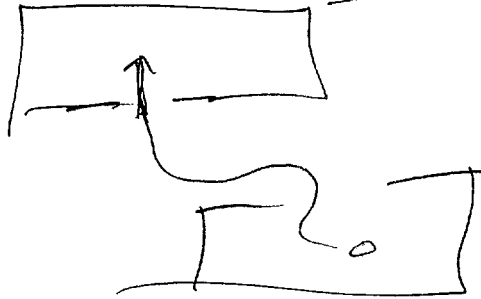
(17)

MOVES AHEAD 2 DAYS +
DESCRIBES ACTIVITIES

SZ @ AT ON T, on obs.
(Times)

MOTOR SOUNDS

A/S:
VISUAL:



S 1/2 MOVED TO ANOTHER STRUCTURE.

18

SL D AT OT T I ALL als.

(work)

OPENING

LOOKING IN

DIGITALE IN

PUTTING SATE IN

CLOSING.

(SMIT, G)

SMIT

BRIGIT.

Ads

VISUAL:

DIAMONDS

PACKAGE OF DIAMONDS.

19

S4 1/2

VLSUR:

CONTAINER INTO WHICH
"PACKET OF DIAMONDS" IS
PLACED APPEARS FULL OF
CLOTHES.

VLSUR:

PACKETS OF MONEY BEING
PUT IN WITH ~~BOOTS/SHOES~~
LATHAN "THINKS" ~~AND ONE~~
(PURSES?/BOOTS?
~~SHOES?~~)
SHOES?)

MARKING w/ LEWASO
POWER :

(20)

214493

759684



A: ACRES
CENT

B: HAND,
MANHATS.
STRUCTURES/LAND.

A: KINGS
BACK
MANHATS

B: STRUCTURE.

S2: WHITE
EROY
VON TICAL LINDS

A: WADY
SMOOTH

B: WATER.

SESSION END:

1138

SESSION TASKING SHEET

Source No. 049

Date Task Initiated 25 Sep 91

Suspense Date 1200 hrs 30 Sep 91

Task/Targeting No.: 91-13

TYPE: C-OPS

~~Method/Technique:~~ method of choice

Target Data Desired:

1. DESCRIBE KEY TARGET FEATURES (include forms, shapes, spatial aspects, color, motion/dynamics):

- Emphasize the following: _____
- Do the following perspectives:
 - Ground-level
 - Overview
 - Other: _____

PRIME!
→

2. IDENTIFY KEY TARGET CONTENT (include meaning, purpose, function, nature of activity, type/nature of people, if present):

- Emphasize the following: _____

3. IF PERSONALITY, DESCRIBE: _____

4. OTHER: (or see attached) _____

DESCRIBE ANY RELEVANT INFORMATION

5. ADDITIONAL GUIDANCE: (see attached)

optional coordinates: 214493/759684