

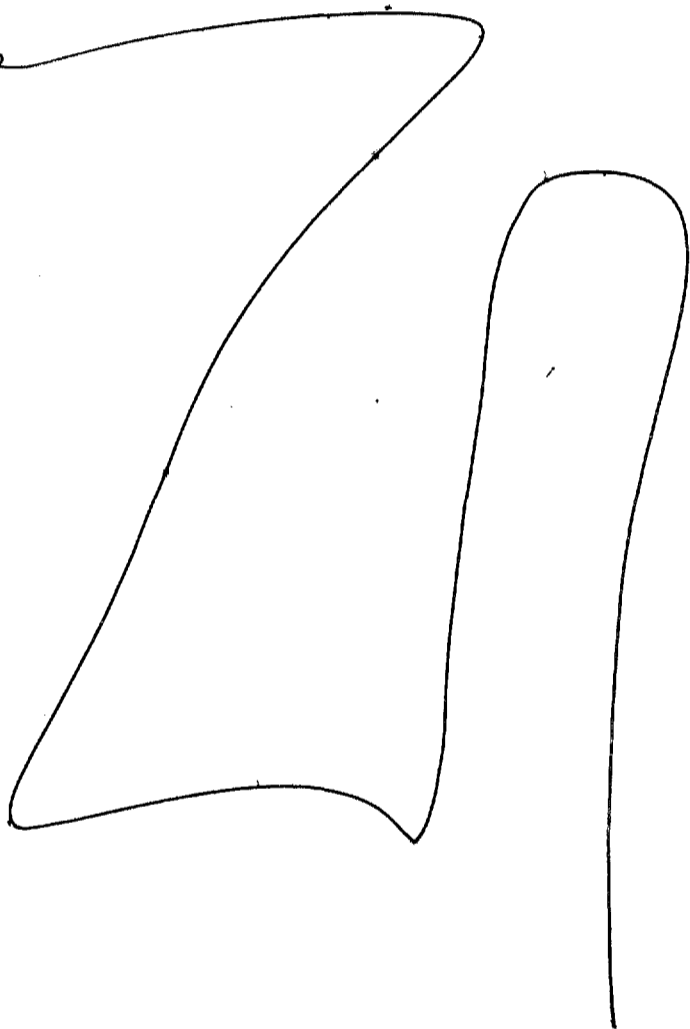
00F
JTF-4
31 Jul 90
P: 086
00F
0920

AV - Categorized
PI - ~~no~~ generic
metal hull vessel

900731
9000

Miss BK
AOL BK
Ditto on AV
Fishing Trawler

900731
900086



A - across,
angle down,
angle forward,
angle up,
angle across,
angle down.

- semi hard
manmade

B - structure

A - hard
manmade

B - structure

AOL BK
metal hull

This document is made available through the declassification efforts
and research of John Greenewald, Jr., creator of:

The Black Vault



The Black Vault is the largest online Freedom of Information Act (FOIA) document clearinghouse in the world. The research efforts here are responsible for the declassification of hundreds of thousands of pages released by the U.S. Government & Military.

Discover the Truth at: <http://www.theblackvault.com>

2)

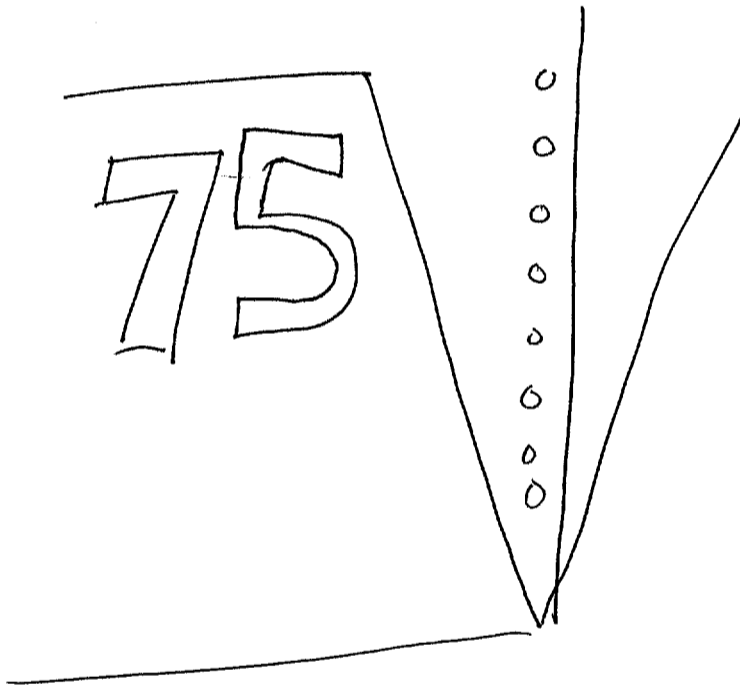
A - ~~green~~ hard
 Manipulated
 B. Structure
 A/L BK
 Wooden planks
 Dock in harbor
 A/L BK
 wooden pilings
 A - soft
 natural
 B - water
 A -

52
 Smooth
 fan
 blue
 green
 red
 yellow
 orange
 violet
 black
 sticky (54)
 round
 slight chem smell
 woody smell
 sharp taste
 bitter taste
 clanking, small
 throbbing "
 objects banging "

smoothed Coarse
bumpy

AOL BK
Rivets
Previous AOL
Sketches

blue
grey
white
blechy
squared
angle
diagonal
in,
full



break
0933

Slit 0942

MISS BK

900731
90005

900731
900086



A. across
angle down,
angle forward,
curve down,
angle forward
angle up

- semi hand
- manipulate

B. structure

Ac BK

Wooden
planks

Ac BK

Slit trawler

Net Boom

A. hand

Manmade

B. structure

- Manned

B - structure

Ac BK

Net or sail

Ac BK

wooden pilings

AI BK

Feels like tin
plunging into a
deep, dark cold
sea.

SZ

green

blue

white

dirty white

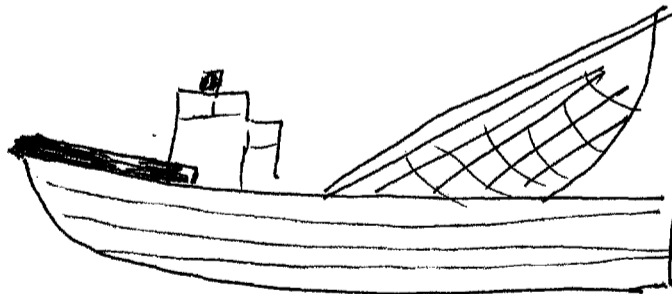
gray

depressing (SZ)

slow

lumpening (SZ)

Ac sketch



52

D

AI

EI

T

I

AOL

A/S

red
green
dirty
smelly

chugging
burping

Barely working/
operating

smokey

Depressing
Depression associated
somehow with the
vessel.

A/S
Shrimp
Trawler

Black
brown

silty

AOL BK
overhead
photo

52

D

AI

EI

T

I

AUC A/S

5 1/2 Old shrimp or fish, powder associated with a dock or pier.



SG1A

yellow
white
light green

round

tires (as
bumpers?)

A/S
Tires
hanging
from sides

V-shaped

Beans
Bread rolls
Flour

Brush
1001

52

D

AI

EI

T

I

Ac

A/S

SG1A

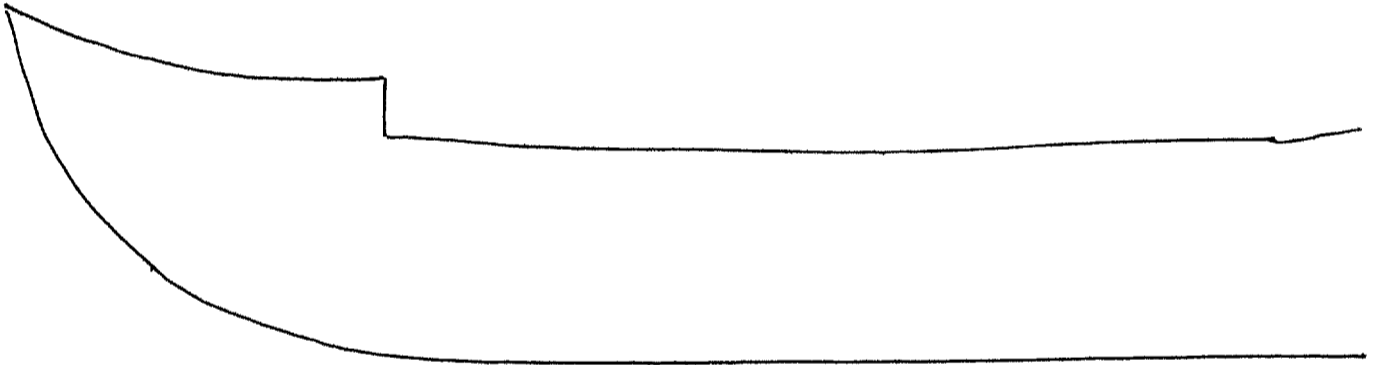


[What is it?]

grey
brown
blue
yellow

puffy

rainbow



52

9)
D AI EI T I Av A/S

[Type of operation]

56/2 Transfer at sea between
metal hullled freight type
vessel & a shrimp fish
trawler.

Brent
1050

1120

52

D

AI

EI

T

I

Aug

A/S

900731 900086

56 1/2 Light hulled, white SS. SS
 sets w/i near 1/3. Large
 single mast near bow.
 Clutter of different shaped
 objects mid deck. Large
 freighter. Smattering of down/branches.

Shrimp/fish trawler: see
 earlier notes.

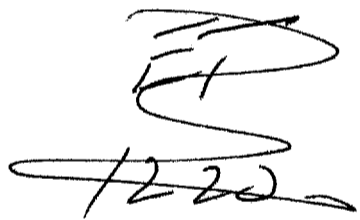
Between 0001 & 0600 1 Aug 80

21° 08' N 71° 47' W

52 D AI . EI T I Noe AFS

56 1/2 Transfer will occur within an isolated cove or small harbor in extremely calm seas.

~~There is some~~ ~~At~~ The specific cove/harbor is characterized by smattering wooden debris abandoned an old dock or wharf, a ship wrecked wooden vessel or an abandoned shack or structure. There are deteriorating wooden objects extending from the shore.

"Shunpe" has come from 

Version of Great Inagua Bahamian relationship: either found out by or ... same as Comments of Hudson

EI
1222