

REMOTE VIEWING TRAINING SESSION

```
*****
*
*
* Remote Viewer : LB
*
* Interviewer : FA
*
* Observer(s) : _____
*
*
* Date : 01/29/85
*
* Starting Time : 1310 hours, local
*
* Site # : 0099
*
* Site Acquisit.: CRV (CRV ERV PRV ARV BRV Other _____)
*
* Working Mode : GT (GT HE Other _____)
*
* Feedback class: C ( A B C Other _____)
*
*****
```

```
*****
*
* Ending time : 1345 hours, local
*
* Notes : 15 45'S 69 28'W
*
* Highest stage : 04
*
* Evaluation : +
*
*****
```

```
*****
* DESCRIPTION OF SITE
* Actual : The Uru Indian floating village on Lake Titicaca, Bolivia
*
* RV summ.: Straw native huts on land/water interface, maybe on water
*
*
*
*****
```

This document is made available through the declassification efforts
and research of John Greenewald, Jr., creator of:

The Black Vault



The Black Vault is the largest online Freedom of Information Act (FOIA) document clearinghouse in the world. The research efforts here are responsible for the declassification of hundreds of thousands of pages released by the U.S. Government & Military.

Discover the Truth at: <http://www.theblackvault.com>

29 JAN 85
1310 HRS
FT. MEADE,
(PRED)

15° 45' S
69° 28' W



A: ACROSS
SMOOTH

B: _____
A: DOWN
CURVED
SEMI-ROUGH

B: WATER C

A: RISING
UNDOWN
ROUGH

B: LAND C

L/W INTERFACE C

- S2: ✓ BROWN C
- SANDY PC
- GREEN C
- ✓ FROTH PC
- ✓ DOWN C
- ✓ SUNNY C
- ✓ BRIGHT C
- ✓ CLEAN C
- SALTY C
- BLUE C
- HEAT
- ✓ HOT AIR CFB
- SANDY FEEL PC

AOL BROWN

SEMI-VISUAL OF REFLECTION
WELD LOOKING DOWN TO
WATER - HOLD

AOL BREAK
BUILDINGS/CITY

15° 45' S
67° 28' W



A: CONCRETE
GROUND
LAYER
MAN MADE

B: _____

15° 45' S
67° 28' W

MISS BREAK

AOL BREAK
KINDLY MINOS.

15° 45' S
67° 28' W



A: SMOOTH
FLAT

B: WATER

A: ROUGH
UNDOUBT

B: LAND

A: ROUGH
JAGGED

B: L/W INTERFACE

15° 45' S
67° 28' W



A: RULING
SMOOTH
NATURAL

B: LAND

SZ: FOSSES LIKE STRAW

3

15° 45' S
69° 28' W

MISS BNOAK

15° 45' S
69° 28' W

A: MISS BNOAK
ADL BNOAK
END OF A BONE

15° 45' S
69° 28' W



A: CURVING
BACK
AIRY
SMOOTH

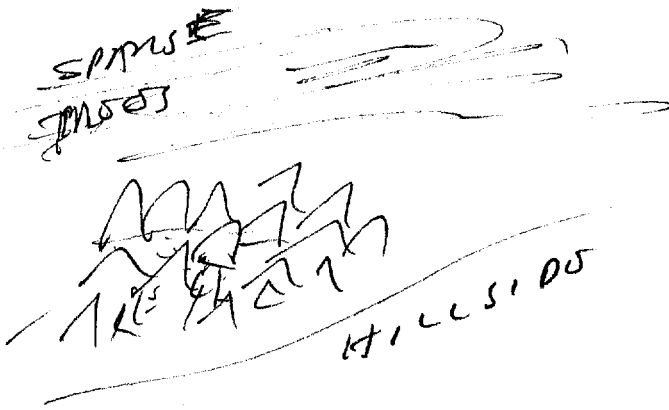
B: ———

A: HAND
CURVED

B: EARTH

S2: TAN
SUBPONDOD
TAN C
DRY C
MANY C
TASTES LIKE SMOKE
RISING TO POINT
STRANDOD C
PARALLEL C
LOTS OF THESE
SURROUNDED BY OILWADDS C
CUSTOMOD C
REALLY DIRTY
MUD - DIRT
PLY

4



ADL BRACK
LIKE A CLUSTER
OF WATERS HUTS
BY A HILLSIDE

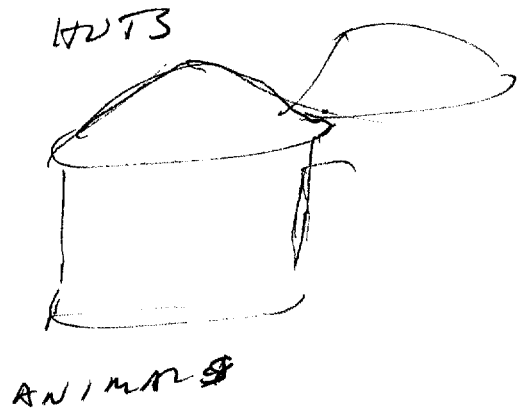
S2: D, A1, E1, T, 1, ADL 1/3

LOW
ROUND -
GROUPS OF 5

ADL BRACK
ZUMI
ZULL HUTS,

BRACK
TWO-COLORS
POINTY
ROUND PL

ONLY
GROUPS



(5)

S2: D A I E T I AOL A/S

EVEN WITH SUCH OTHER

SAMENESS

LOW

LOTS OF THEM

KIDS

~~AWAY FROM~~

AOL NOSTAL
REMINDED OF
SESSION W/ FLOATING
VILLAGES ON STRAW
ISLANDS

ON WATER

NATIVE HUTS - LOTS OF STRAW -
HUTS -

SUMMARY:

SITE IS A GROUPING OF NATIVE HUTS
MADE OF STRAW AND EARTH NEAR A LAKE/
WATER INTERFACES IN A VERY DRY REGION.
HUTS ARE POINTED ON TOP (ROUND POINTS).
I DON'T KNOW WHETHER THEY ARE ON THE WATER
OR NOT, BECAUSE I AM REMINDED OF ANOTHER
SESSION, BUT I FEEL THEY MAY BE.

6

SZ: D KI ET T I AOL A/S

HUTS

LOW
NOT RAISED

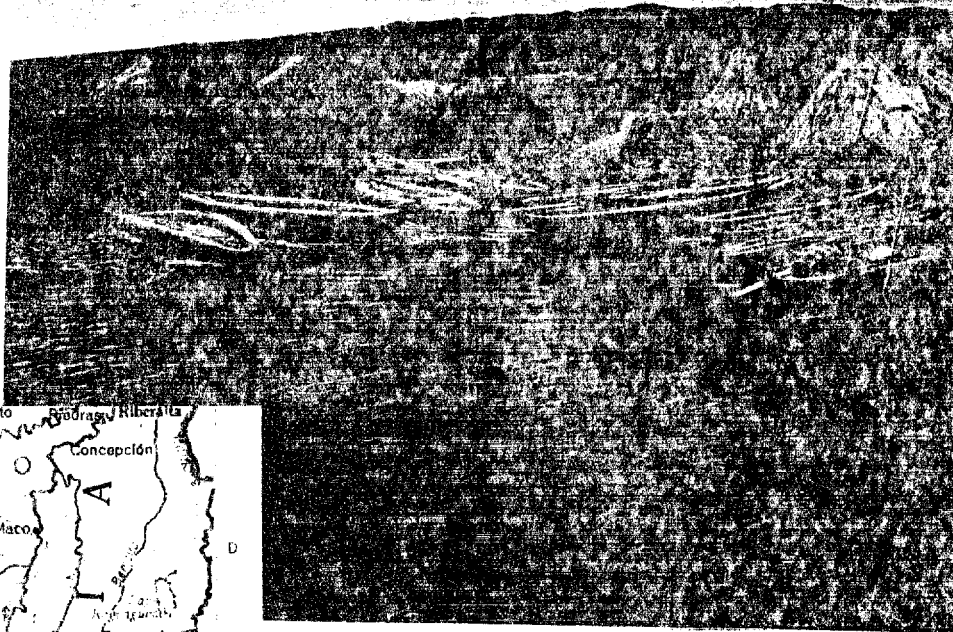
LIVING

REEDS

AOL BUILT
THE REED SEA

SITE ~~END~~ END

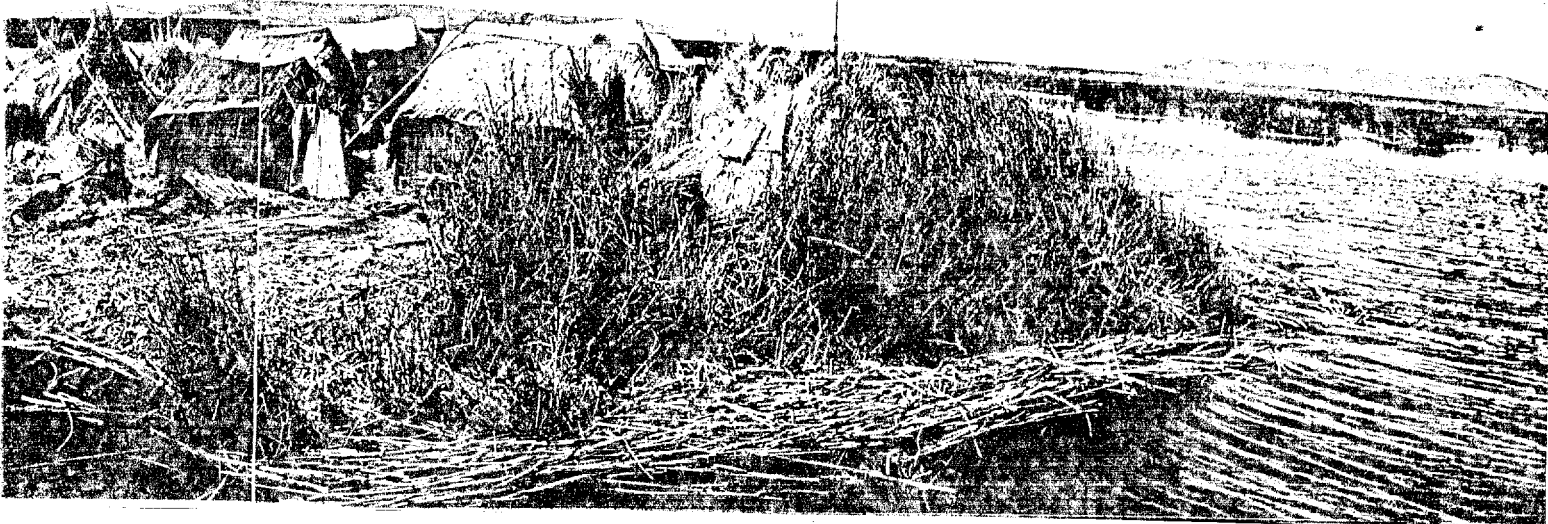
1345



Titicaca, Abode of the Sun

CPYRGT

CPYRGHT



Floating world of the Urus

BOUNTIFUL AND BUOYANT, totora reeds from Titicaca's shallows supply the Urus with material for homes and boats. Reeds even provide the "ground" these fisherfolk walk on, since they live on floating islands (above). As bottom layers rot, the Indians spread new layers on top.

Seated on the spongy surface (left), an Uru woman grinds barley for making gruel or mush.

Like the Aymaras, the Urus fashion boats of totora (below). Norwegian anthropologist Thor Heyerdahl theorizes that their ancestors may have learned the art from ancient Mediterranean mariners who crossed the Atlantic in similar boats of papyrus. Aymaras from Titicaca helped Dr. Heyerdahl construct a seagoing craft to test his theory (see the January 1971 *GEOGRAPHIC*).

