

Handwritten initials and signature

SECRET/NOFORN - HANDLE VIA SKEET CHANNELS ONLY

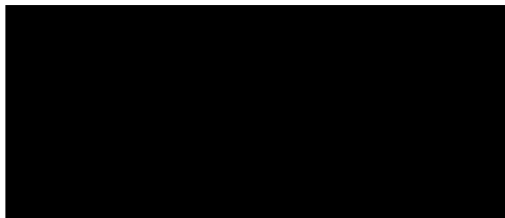
PROJECT SUN STREAK (U)

WARNING NOTICE: INTELLIGENCE SOURCES AND METHODS INVOLVED

PROJECT NUMBER: 0111	SESSION NUMBER: 1
DATE OF SESSION: 17 JUN 88	DATE OF REPORT: 17 JUN 88
START: 0907	END: 1041
METHODOLOGY: CRV	VIEWER IDENTIFIER: 025

1. (S/NF/SK) MISSION: Stage 3 training. Site was the Stanford Linear Accelerator.
2. (S/NF/SK) VIEWER TASKING: Coordinates 3725/1221.
3. (S/NF/SK) COMMENTS: Although two, single, excellent target-related ideograms were finally produced (see p.7), the viewer habitually begins a session by producing only a single, multiple ideogram relating to the overall site. There is nothing wrong with this as long as the representative, discrete, multiple gestalts are broken out into individual "A" and "B" components. This, 025 fails to do, placing all of each gestalt's motion into a single "A". Consequently, even though 025 is aware that a site is composed of multiple gestalts and (usually) what those gestalts are, the viewer continues to get bogged down in Stage 1 because the all the representative motion is run together. This was a major teaching point in today's session. As far as Stage 3 contact was concerned, 025's performance was excellent. (Stage 4's are beginning to creep into the sessions with greater frequency).
4. (S/NF/SK) EVALUATION: [4] *[Handwritten initials]*

SG1J



SECRET/NOFORN - SKEET CHANNELS ONLY

CLASSIFIED BY: DIA-DT
DECLASSIFY : OADR

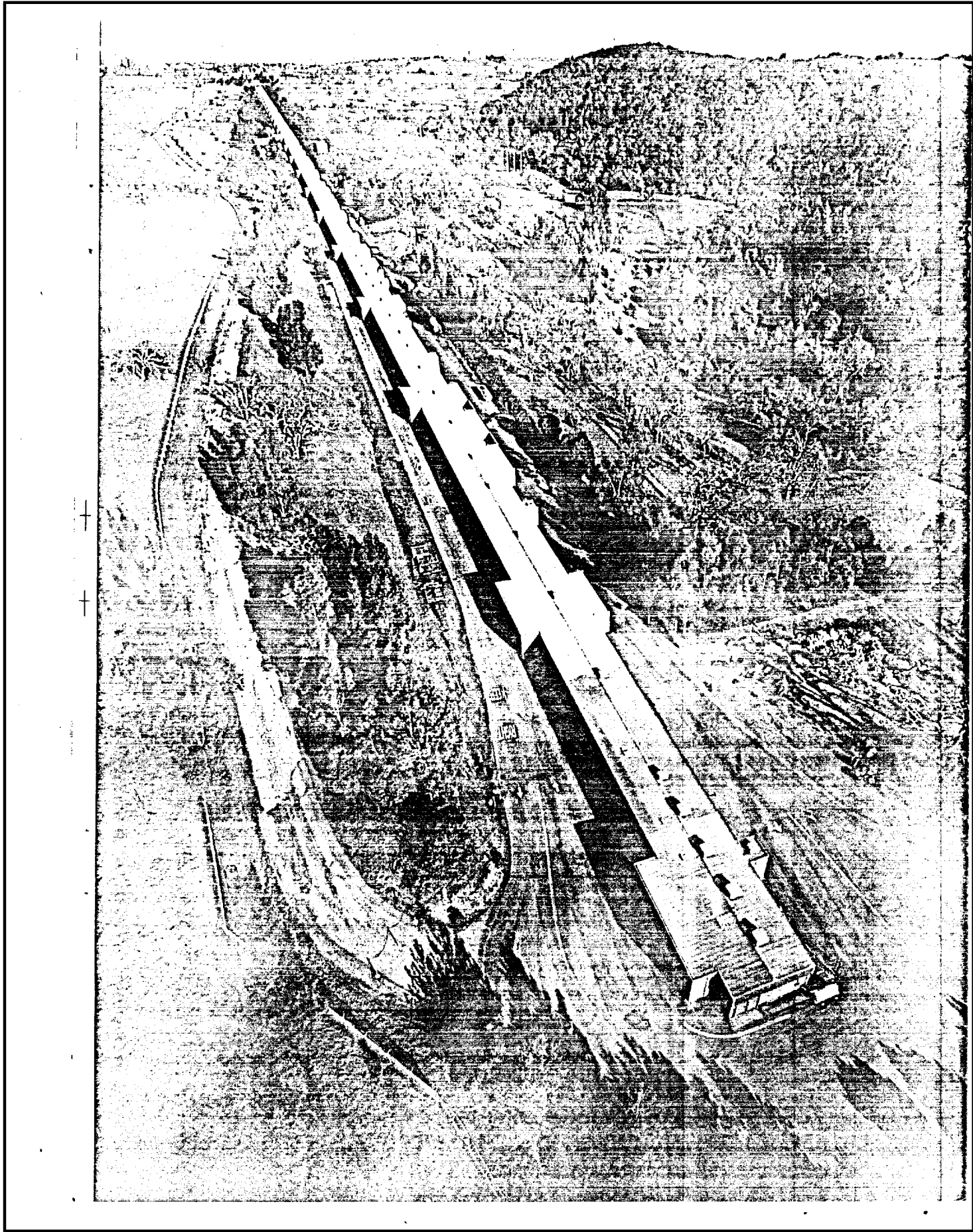
This document is made available through the declassification efforts
and research of John Greenewald, Jr., creator of:

The Black Vault



The Black Vault is the largest online Freedom of Information Act (FOIA) document clearinghouse in the world. The research efforts here are responsible for the declassification of hundreds of thousands of pages released by the U.S. Government & Military.

Discover the Truth at: <http://www.theblackvault.com>

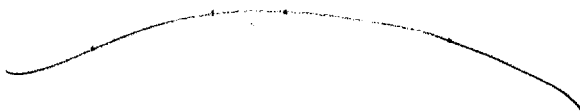


025

AV - aircraft
PI - none

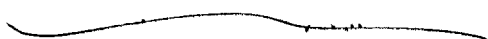
17 June 1988
0907

3725
1221



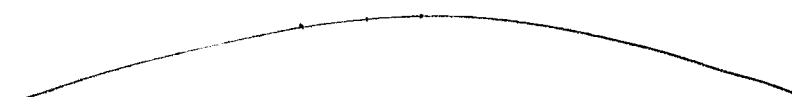
A. up curve
over
motion
B. no-B

3925
1221



A. descending
curve - back
cont. PK
rotation
to left
B. no-B

3725
1221



A. out over
across curved
curve back
B. edge where
meets

AOL-Bk
shore line
water edge
landscape

3725
1221



A. out over
across
curving
along
down left

B. landscape

AOL-Bk
dark
along

S-2
dark edge

3725
621

A. ^{like} ~~stage~~ ^{like}
over ~~long~~ ^{way}
semi-hard
B.W-B

S-2
long and narrow
black
cool
moist soil
vegetation - Stage 4
contour
green

AOL-BK
mud like

AOL-BK
mud or
faint ^{1/1}
green

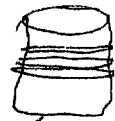
4

3725
1221



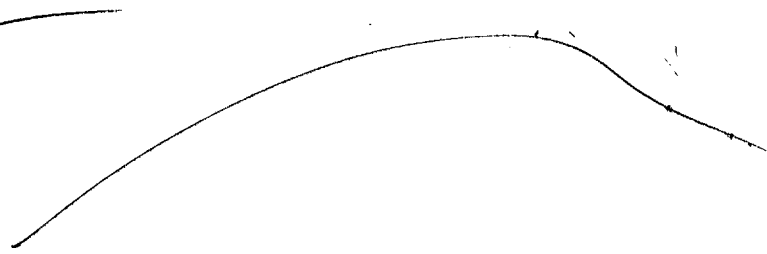
A. across
covering
and
to natural
B. NO-B

ALL BK
in can



cloudy rainy
day - cool
back

3725
1221



A. up curve
over smoke
down
contour
natural

B. land

A. curve
down-
hill
uphill

Too much
Rk

B. structure
AOL-Bk
space between
buildings

Walt Hand Structures Interface

375
1221

52
fall

A. Break up
max-made
hand
B. Structures

375
1221

52
fall

A. up over
speed down
windings
crazy
B. no B

3925
1221



A. interwined
going through
structural

B. no-B

A. forward
along
structural

MAN-made

B. no-B

FLY-BK
strip

S-2

Dark

Asymmetrical

Large

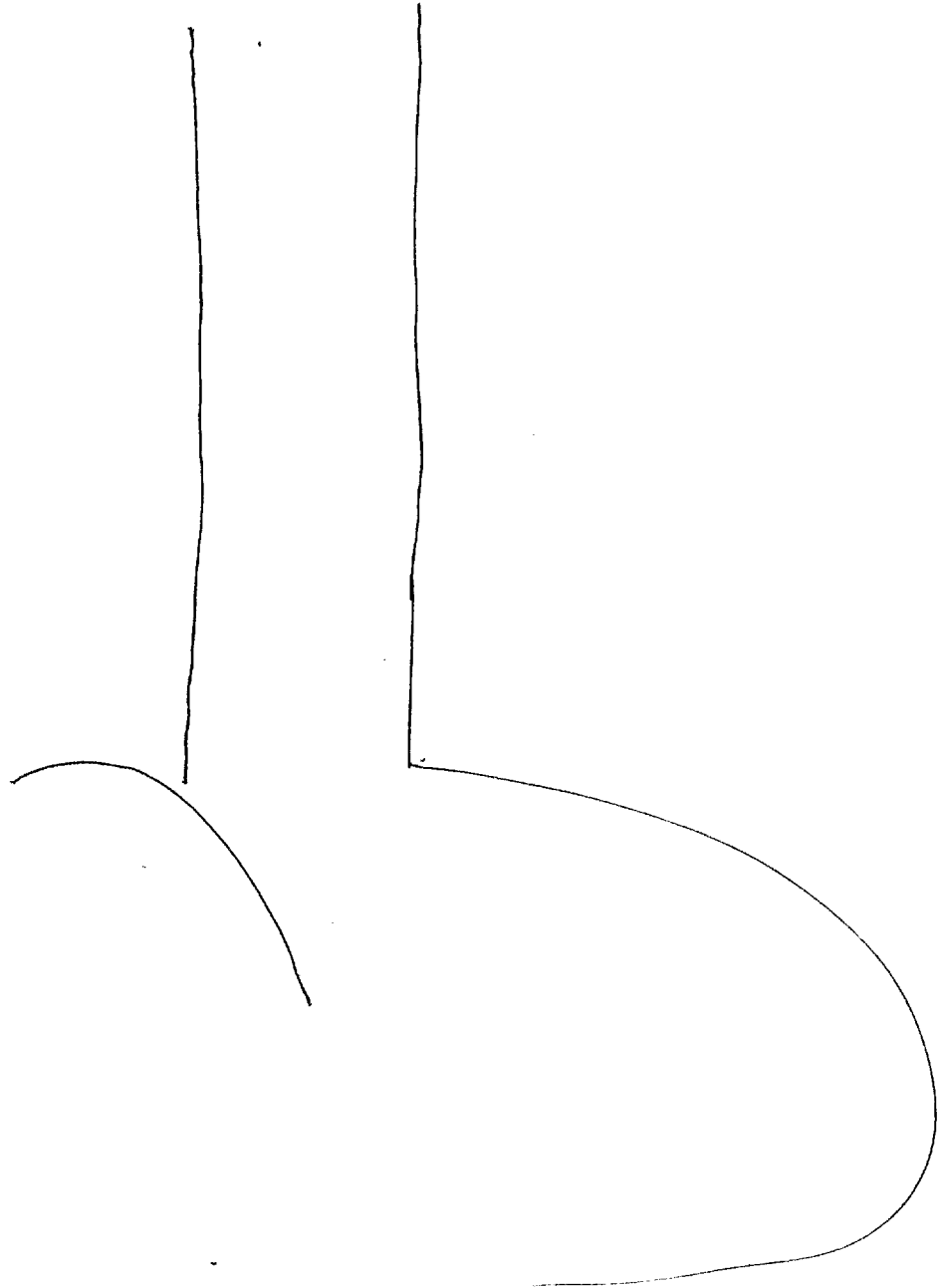
eye in center

Color

surface mottled
yellow

Black
structural

*ACU-BE
transported to
Lunch*



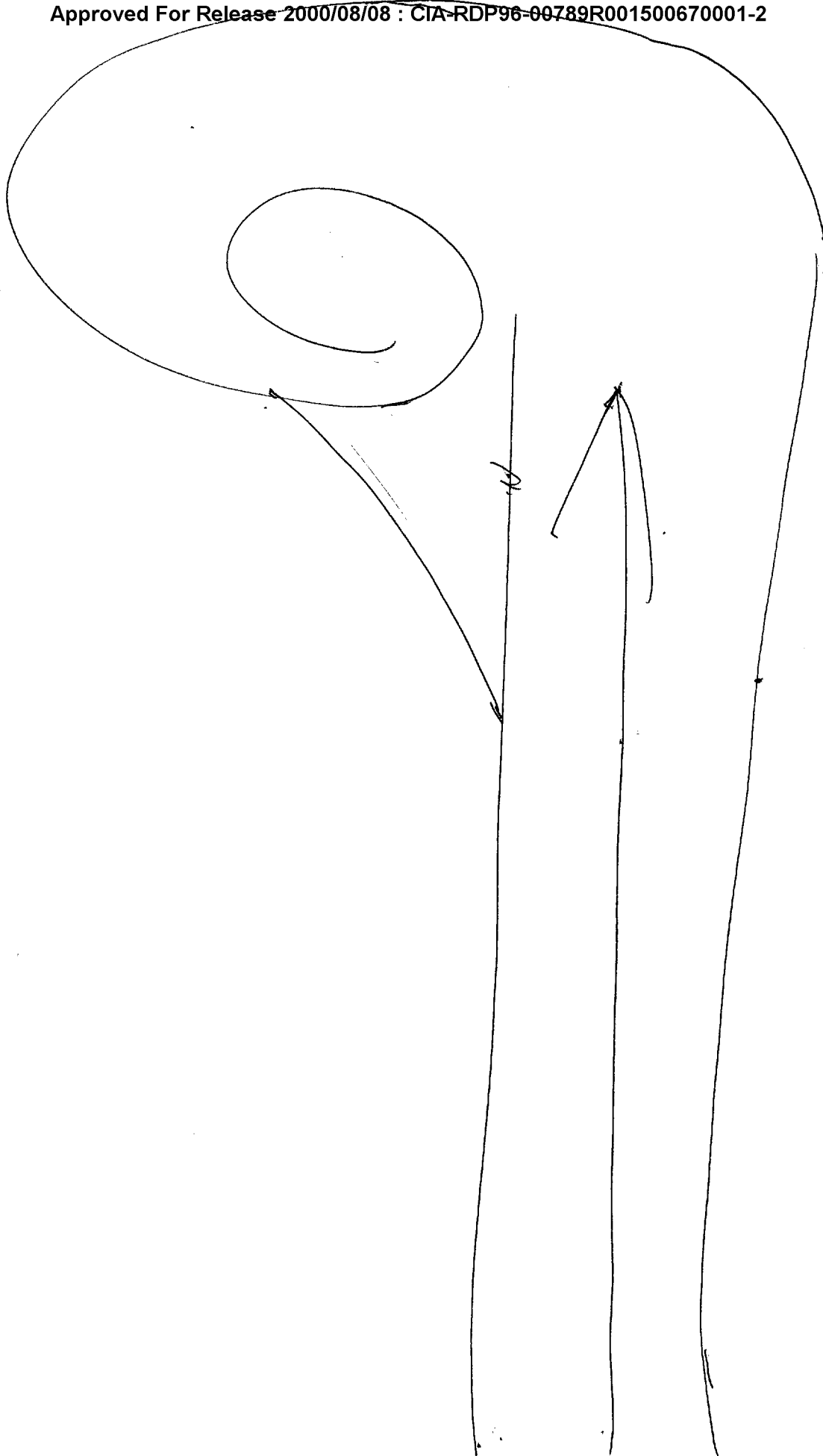
S-2

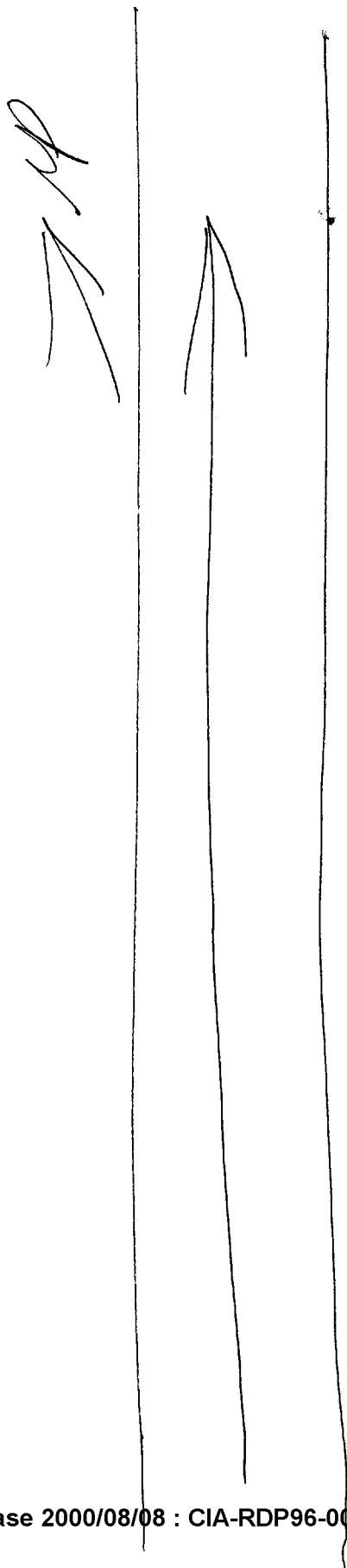


red power
 like take off
 energy vibration
 air being pushed used
 to help project
 white
 blunt rounded
 top
 powerful
 can go fast
~~the~~

AT-BK
 want to get
 out of its way
 destruction
 very powerful

tail part





Acrops
going forward
on the other
through
outward
and
man-made
"wide enough"
but extending
long
~~long~~
horizontal
surface

9

Site is a water plant / 98 structure

The land is contained - with

There is a structure is long "wide
enough" but extending long
containing to machine along
through curved ground
(panels)

10.9/1