

REMOTE VIEWING SESSION DATA

\*\*\*\*\*

\*  
\* Remote Viewer : PS 003  
\* Interviewer : FA 051  
\* Observer(s) : \_\_\_\_\_  
\* \_\_\_\_\_  
\* \_\_\_\_\_

\* Date : 05/28/85

\* Starting time : 1322 hours, local

\* Site # : 102P

\* Site Acquisit.: (CRV) ERV PRV ARV BRV Other \_\_\_\_\_

\* Working Mode : (GT) HEM Other \_\_\_\_\_

\* Feedback class: (A) B C

\*\*\*\*\*

345901  
901164

\*\*\*\*\*

\* Ending time : 1536 hours, local

\* Notes : AD-Military Touch, PE ASD Ryan

\* Highest stage : V

\* Evaluation : - 1

\*\*\*\*\*

\*\*\*\*\*

\* Actual site : Radio Tower

\* RV summary : A/S ps 23

\* \_\_\_\_\_

\* \_\_\_\_\_

\*\*\*\*\*

This document is made available through the declassification efforts  
and research of John Greenewald, Jr., creator of:

# The Black Vault



The Black Vault is the largest online Freedom of Information Act (FOIA) document clearinghouse in the world. The research efforts here are responsible for the declassification of hundreds of thousands of pages released by the U.S. Government & Military.

**Discover the Truth** at: <http://www.theblackvault.com>

Av PI military truck ASD paper

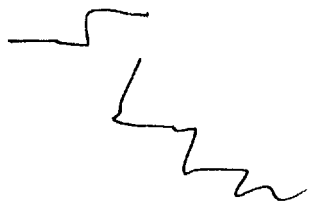
SG1J

29 May 85  
Ft. Meade, MD  
20755

SG1J

13:22

345901  
901164



S-2  
dk grey  
hard

A. slope up  
wash  
solid  
B. summit

A. descending  
angular  
solid

B. sand

ADL BK  
basalt cliffs

345901  
901164



A. across  
front  
with  
hand

B. standard

A.  
Confusion break

345901  
901164



A. across  
Confusion ble

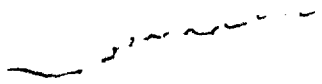
345901  
901164



A. across  
waves  
found

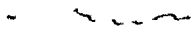
B. water

34 5901  
901164



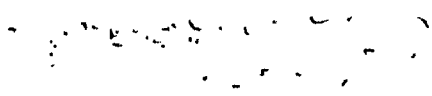
A - So  
Confusion ble  
AOL BK  
Sand

345901  
901164



A. across  
Propose  
B. Sand  
  
AOL BK  
Sand

345901  
901164



A  
  
AOL BK  
Strong lishly  
island

345901

901164

~~.....~~

S-2

A.  
miss break

A. lumpy  
hard

B. rocks

Confusion break

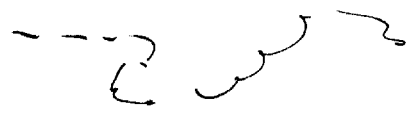
Asl Break  
large field/area  
of smooth water sounds  
of stones

345901  
901164



A. confusion ble

345901  
901164



A. Unhappy  
L  
break  
AOL BK  
desert So. West

345901  
901164

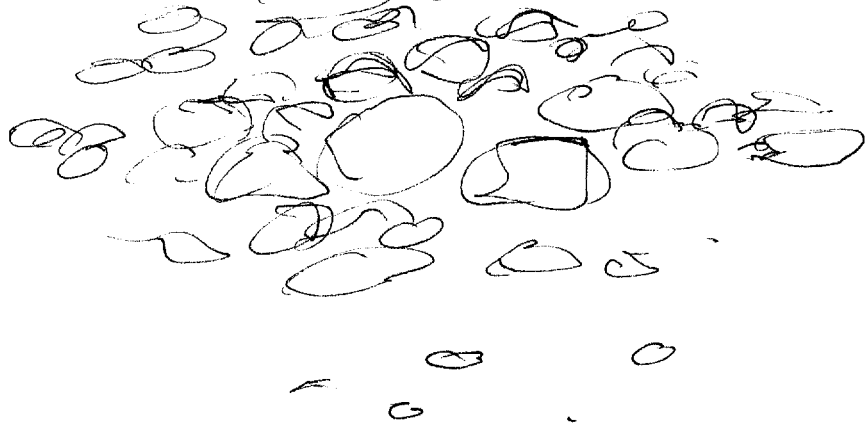


A. scattered  
around  
unhappy  
Solid

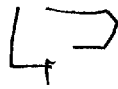
S-2  
yellowish  
cream color  
"Clacking" sound  
Smooth  
Grit  
rounded  
Spread out  
low  
flat  
scattered

B.

AZ BX  
Pleasant features



345901  
901164



A. around angles  
solid  
B. structures

S-2  
blocks

Adv BK  
tan paper shades



345901.

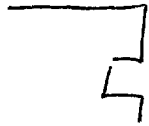
901164



miss bk

345901

901164



A. along  
angle  
along

from

B. Structures

S-2

rising

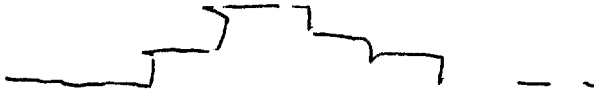
Por BK

powerfully  
tower

345901901.

break

345901  
901164



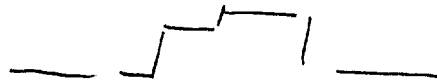
A. across  
up, arse  
up and  
down  
hard

B. structure

S-2  
white  
smooth  
~~cool~~  
dry  
dusty taste  
crunchy sound  
brown

Hot Break  
Pueblor

345901  
901164



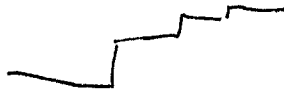
A - across  
solid  
B. land

A. up and  
up away  
solid

B. structure

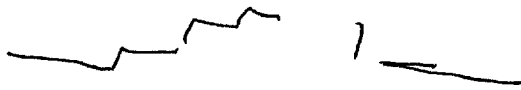
A -  
Hot Break  
Ocean

345901  
901164



Confusion blk

345901  
901164



A. across  
side  
B. found

A. upward  
up  
side

B. structure

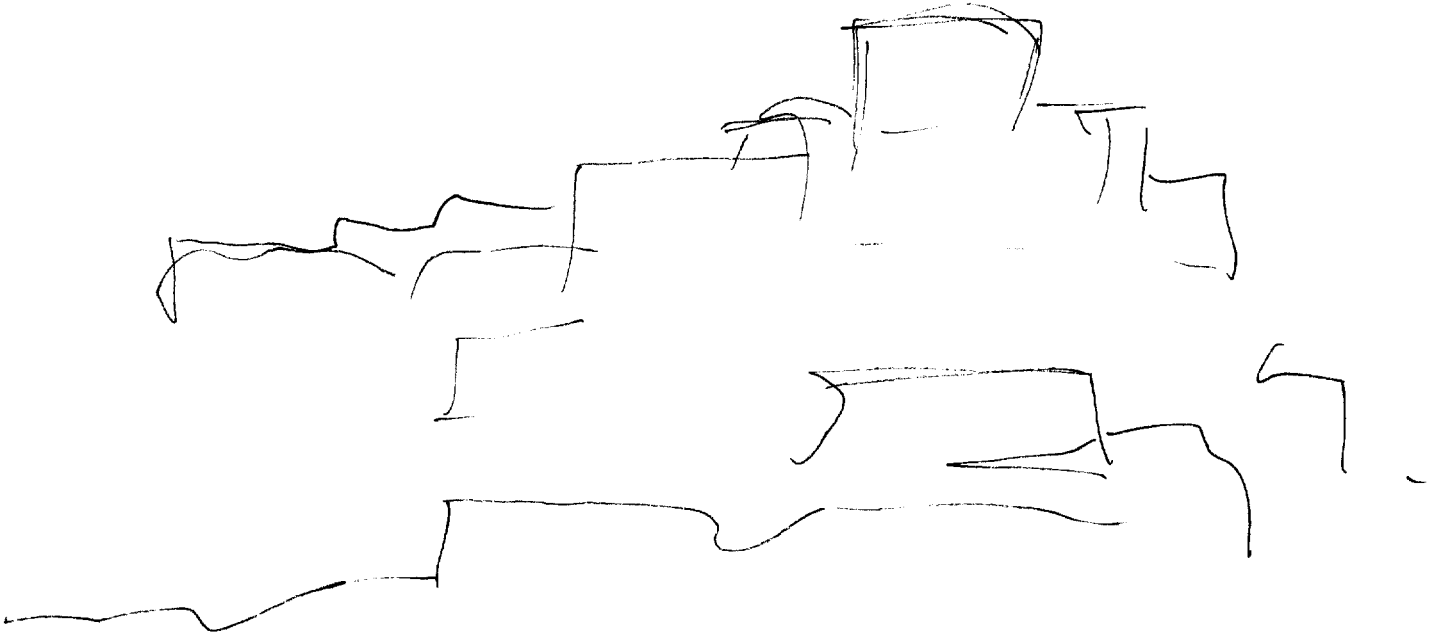
A. across  
flow  
B. water

S. 2  
Chilly  
grey  
hazy  
damp  
misty  
bird sound  
sharp smell  
shiny  
green  
black  
blue black  
reddish

drawn in  
American  
rough  
sketches  
angular  
high up  
squat  
stepped down  
spread out

A.I. bk  
lonely





A/C BK  
Hobian Sea Village  
on cliff.

Site is a set of structures near water in a relatively dry land-setting; ~~there are~~ many small, rounded objects, suggesting of water-polished stones are present. ~~Site~~ Structures are high up, squat, stepped down, & somewhat spread out.

S-2:  
red +  
white

12  
A/L A/S  
A/L B/L  
SO. Navaho

many  
various  
colors

rocks

sandy

A/S  
Sheep  
A/L B/L  
Navajo Sheep  
welder

slim

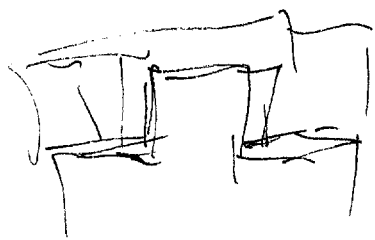
vegetation

open

hills

barren

structure



can

A/L B/L  
like fort  
in NA Oasis

S 2  
green

D

A I

B I

T

I

ADL

ALS

Arands

rustling  
fresh  
sticker  
smell

MI BIC  
pleasing  
+  
relaxing

ADL BIC  
warm spr.  
NV

people

working  
indigenous

ADL BIC  
African

Croats

animal  
sounds

Slight  
fear  
anxiety

tired  
insecurity

hp

S-2  
blade

D AJ EI T J

A/L A/S

secondary

A/L BK  
African  
Tribal  
dress

dusty

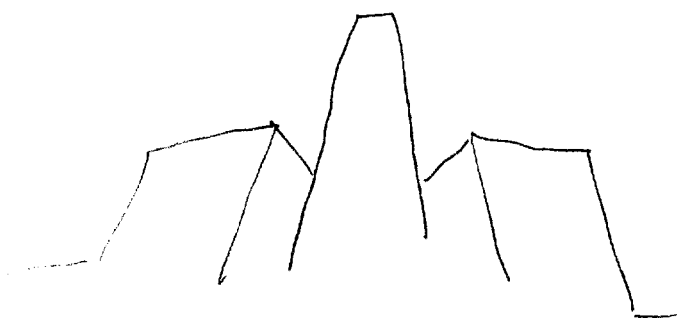
Trellis

A/S  
somewhat  
backward  
2d or 3d  
world

red

A/L BK  
Africans  
standing  
near palm

structure





15  
ADL ALS

S. 2

Stone

⊗

carved

abutting  
adjoining

Various  
heights

Open

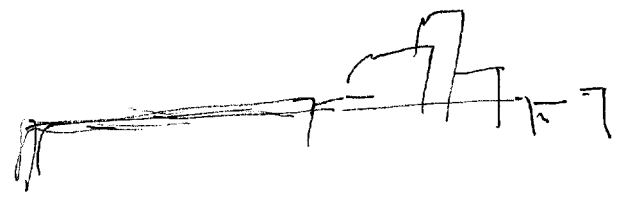
closed

old

old

ADL Bk  
Egyptian  
Ruins

Structures



walls

yellowish

massive  
solid

ADL Bk  
Samarqand

66

S-2

D AJ EI T I AOL ALS

black

AOL Bk  
Nubians

AOL Bk  
Goats ALS  
Goats

Angise

Stones

AOL Bk  
gems

AOL Bk  
gemstone  
mining

AOL Bk  
site has to do  
with acquiring,  
processing, working,  
& selling precious stones

~~SECRET~~

people  
objects  
emotions?  
→ staffs  
Clothing  
buildings  
Voices

people  
attributes  
evanation?

A/S  
Stone  
- vined  
well  
w/ dip  
pole

people  
attributes  
evanation?  
dark-skinned  
indigenous  
subsistence food  
colorful clothing  
long "  
unintelligible language  
pastoral  
evanated

people  
subjects  
evanation?

herding  
surviving  
growing  
waiting  
opportunity  
thieving

people  
topics  
evanation?  
∴

A/S  
tent

AOL BK  
Ethiopian



A. around  
angles  
hard

B. structure

AR BK

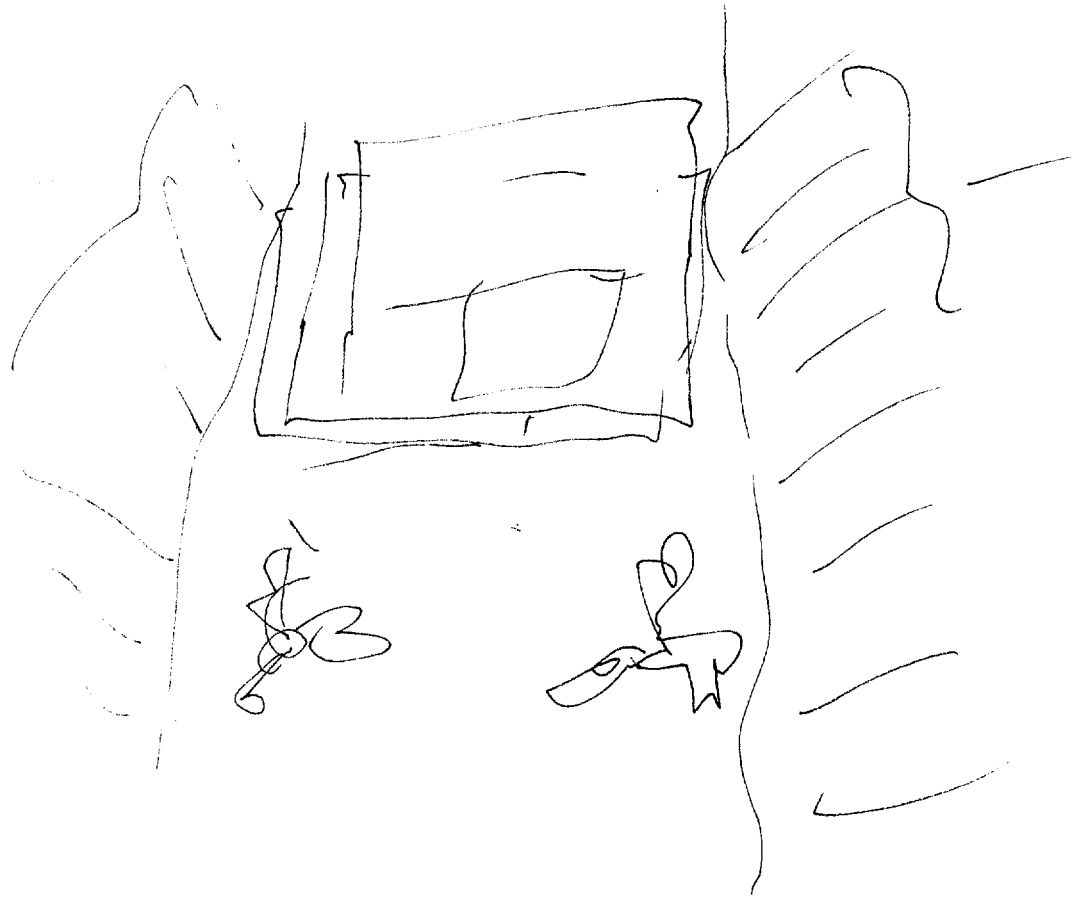
Foreign legion Post in  
N. Africa

AR BK

Vast expanses  
of Sand

AR BK

Castle in  
Iran



Box Bl  
St. Katherinis  
Monastery

Unintelligible  
language  
objects  
enumerations?  
People  
Culture  
History  
empire

Unintelligible  
language  
attributes  
enumerations?  
Global  
rapid  
foreign  
non-European  
student

APL BK  
poly-semantic

Unintelligible  
language  
subjects?  
day-to-day living  
conversations  
Coordination  
cultural interaction  
directly  
interpersonal  
communication

APL BK  
African  
Usulu usulu  
Zimbabwe

Unintelligible  
language  
topics?

children  
animals  
health  
chores  
politics  
concerns  
barter

Empire  
Objects  
Emanations ?

Cities  
nations  
Subjects  
armies  
monuments  
rulers  
barbarians  
weapons  
coins  
goods  
vessels  
animals  
cultures

for Identification

empire  
attributes  
emanations?  
exploitive  
imposed  
ambitions  
bloodthirsty  
demanding  
extracting  
enslaving  
brutal  
widespread  
foreign  
long-lived

empire  
Subjects  
emanations?  
Conquest  
subjugation  
Colonialism  
religion  
trade  
exploitation  
enslavement  
superiority  
mediocrity

for  
O'Hannon  
P. 16

Empire  
topics  
evolution?  
expropriation  
education  
cultural  
beneficial

HOLBL  
Middle  
Eastern

Animals  
Objects  
Emanations?  
-harnesses  
loads  
foods  
food  
clothing  
sounds  
smells

~~Animals~~  
~~attributes~~  
animals  
attributes  
emanations?  
domestic  
important  
load-bearing  
herding,  
transportation  
disorganized  
Economically important  
heavily used  
culturally central  
 ubiquitous



animals  
 subjects  
 excavations?  
 disaffairs

animals  
 topics  
 excavations?  
 food  
~~food~~  
 forage  
 subsistence  
 motive power  
 fuel

and  
 1536

Site is a pastoral area involving dark skinned people in a semi-arid setting very dependent on a variety of domestic animals. People wear flowing, colorful clothing. Structures present are old, multi-level, walled, stone, furnished in color, adjoining abattoirs, with both open & covered areas. Though they are old they still are in use. An empire seems to have been historically important to the area. Area is very rocky & hilly, possibly of predominantly reddish colors.