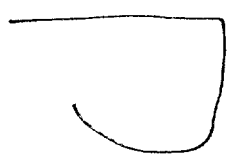


Paul
18 Jan 85
Et. Mc case no
10:01

Class

+

003
051
1001
1046



A. across
curving
around
Solid
B. Structure

SG1B



S-2
rounded
jointed
Very light colored pc
bumpy
wedge shaped cfr
gray pc
metallic cfr
carbon
furrowed

4

Hot Break
Carroll
Missile Launching
site

SG1B



Ac across angle
around
Solid
B. Structure

S-2
D-ann
lumpy
hard
concrete
flat
curving
vertical pc
air
jointed
bed
angles

Human Biological
Research
Facility

will be open
exposed

This document is made available through the declassification efforts
and research of John Greenewald, Jr., creator of:

The Black Vault



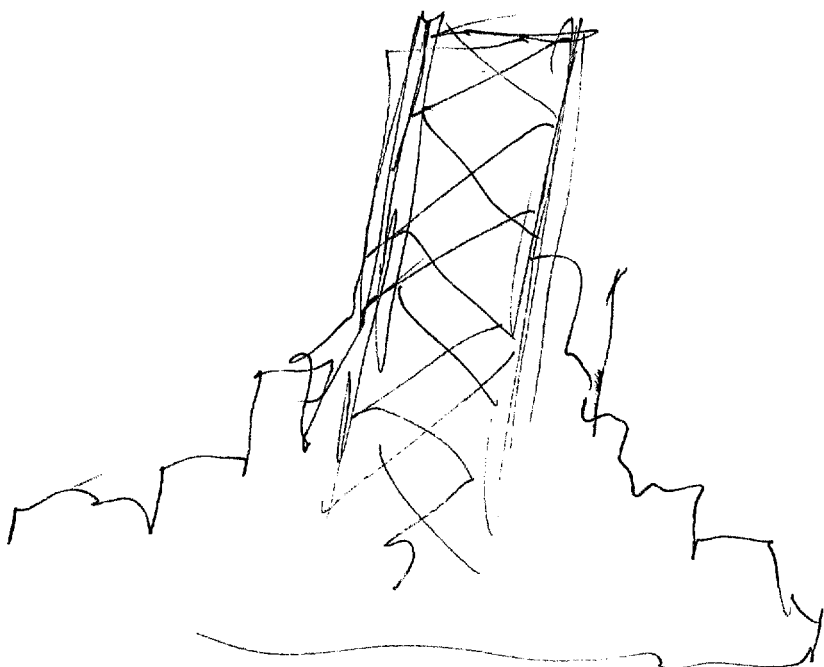
The Black Vault is the largest online Freedom of Information Act (FOIA) document clearinghouse in the world. The research efforts here are responsible for the declassification of hundreds of thousands of pages released by the U.S. Government & Military.

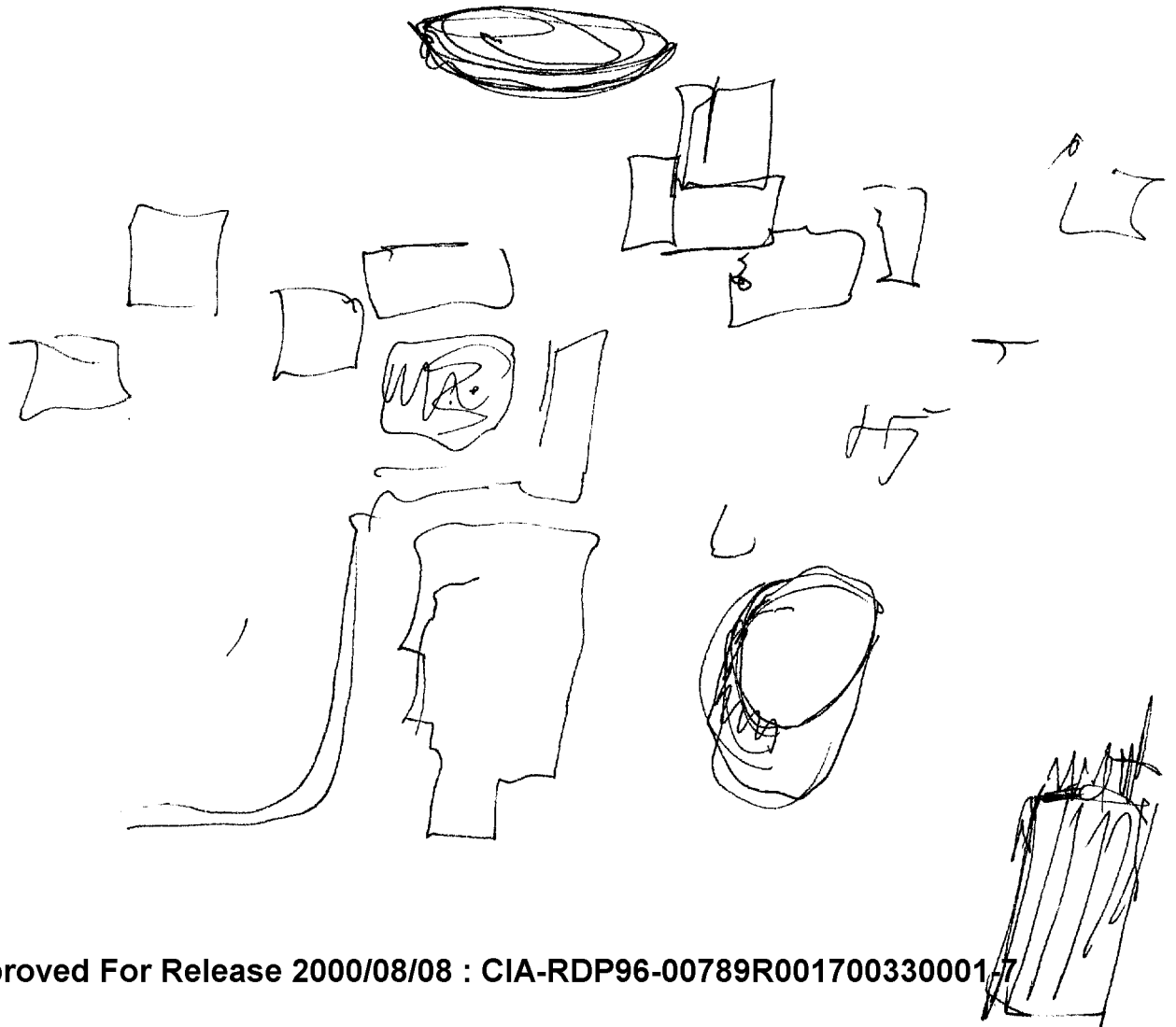
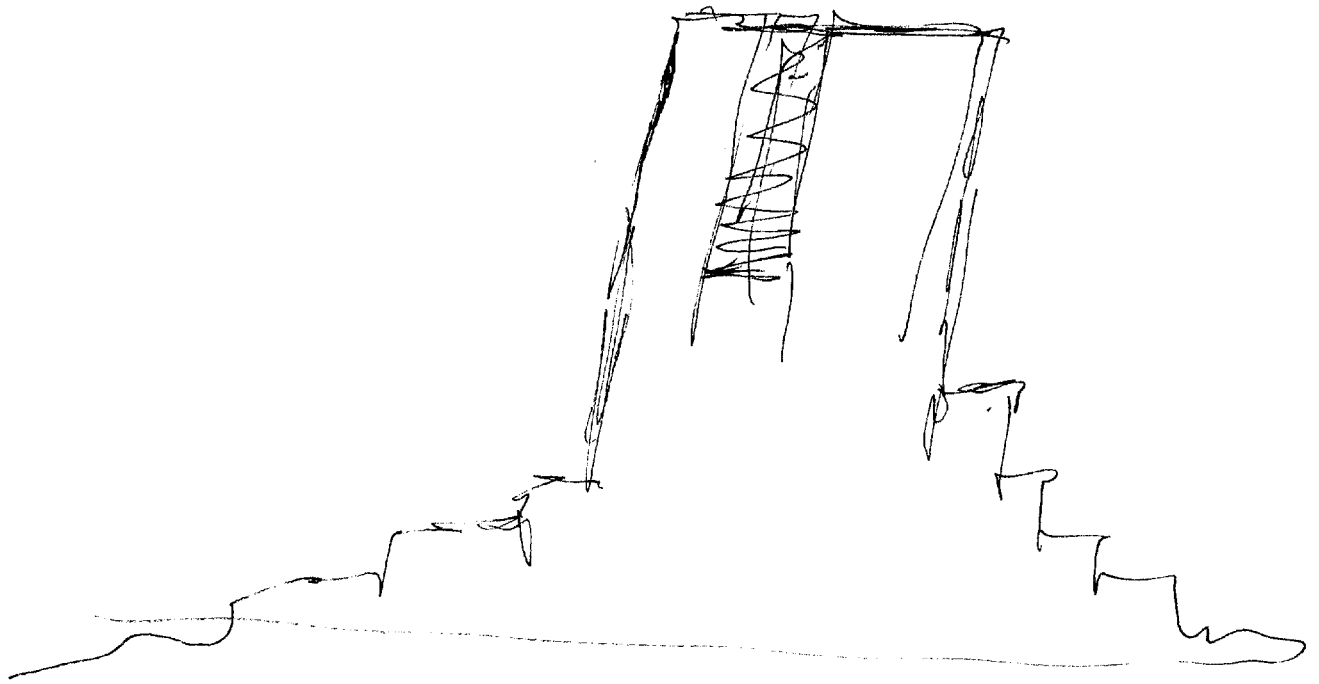
Discover the Truth at: <http://www.theblackvault.com>

*prominent
projecting up*

*A-2 break
interested*

*AOL Break
space launch
gantry*



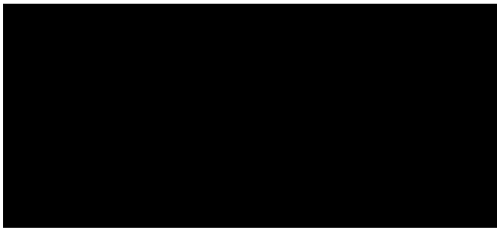


S-2

A/S

air
joints

SG1B



A. across ^{angle} of solid
B. building

S-2
red
white
silvery
blacked
windshield

S-2 D A I B I T I A C A A S

red
white
silvery
blacked

windshield
building
complex e
piping
cable
humming

light color
white

air
with ^{microscope} glass partitions
laboratory e
filtered air

S-2
hospital
green

compartments
pc

animal
tables

experimental
surgical

penicillin
feeding pc

AXL Break
B/W

official e
from curtain c
political pc

inside the building something is perceptible.



- A. ground
curtain
plaster
- B. equipment pc

translucent
green

~~translucent~~
translucent
table

fulsing
stainless
steel
equipment

non-ferrous
radiation

AXL Break
like a
CRT-Scan

cylindrical

injection pc
monkeys
interiors sterile pc

S-2

D

AI

EI

T

I

ADL

ALS

scientific
secret

fear

captives

perilous
dispassionate

experimental

Sanics

biological
genetic

people
two groups
of people
experimenters,
subjects

pain
curiosity
despair
ambition

directors

research
military

specimens
virus
bunt
microorganisms
red liquid

S-2

A/S

the nature of the research at the site is perceptible.

AI Breach
Defarious

Medical
Chemical pc
immune systems cft
Shock resistance
refarious
Explosive
expensive pc
open-ended

Filters

resolution pc
single minded pc

Cubicles pc

Optics cfr
Microscope

electronics
Computers
analyzers
Oscilloscope
analyzers

blood spectrum

A degradation
uncertainty

Sickness
~~stot~~

Surgery cft
behavioral pc
Conditioning pc
psychology

S-2

D A I E I T I

ADL A/S

chrome
shiny

Suspended

beds
white
walls

beds

Voices
animal
sounds

doctors

ADL Break

like
incubators

fluo no clue

Summary

A building or complex of bldgs. in an iron curtain country. Used for scientific research + experimentation, involving the military. 3 groups of people - directors, who were associated with ambition; experimenters who were curious, resolute, single minded + dispassionate; and subjects, who were fearful, bewildered, uncertain, fearful and full of despair + trepidation. Pain was associated with the experiments. Laboratory animals were present. Patients were captives. Research was secret, w political implications. Medical + laboratory equipment present included monitoring equipment (radioactive); blood spectrum analyzers; surgical tables; oscilloscopes; optical equipment; electronics + computers; filters; and antocubes. Sterile environment were involved, as was some application of Sonics; research with genetics + microorganisms seemed to be involved also. Behavioral, conditioning, + psychological, + institutional aspects seemed to be present.

Airfield associated with site.

Human biological research facility,

site end

10:46