

AV found cylinder

Paul
29 Oct 84
10:00

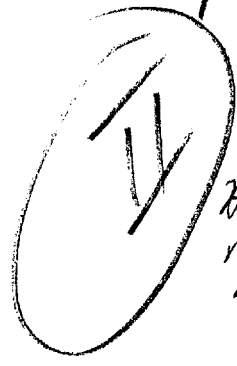
56° 2' 25" N.
12° 37' 55" E.



A. Hughes c
solid c
B. buildings c

S-2
brickwork c
grey c
disintegrating cfb
blockish c
stacked c
jumbled together c pc
flat roof c
green c
rounded c
rocky c
mountainous

003
051
1000
1036
3



Hot Break
Mocchu Picchu
urban ruins

56° 2' 25" N.
12° 37' 55" E.



A. Fills along
solid
B. land c

S-2
black pc
flat c
smooth pc
white c
long c
open c
spacious

Sallini
Sueaish
Hawson

AI Break Soil exposed

This document is made available through the declassification efforts
and research of John Greenwald, Jr., creator of:

The Black Vault



The Black Vault is the largest online Freedom of Information Act (FOIA)
document clearinghouse in the world. The research efforts here are
responsible for the declassification of hundreds of thousands of pages
released by the U.S. Government & Military.

Discover the Truth at: <http://www.theblackvault.com>

no break
air tide

56° 2' 25" N.

12° 37' 55" E.

A. across
fluid

B. water

L/w interpos
w/buildings

5-2
slats grey
smoothly rolling pc
cold pc
bird sounds
fuzzy swell pc
lepping sounds
wide open pc
expansive
far horizon
big room

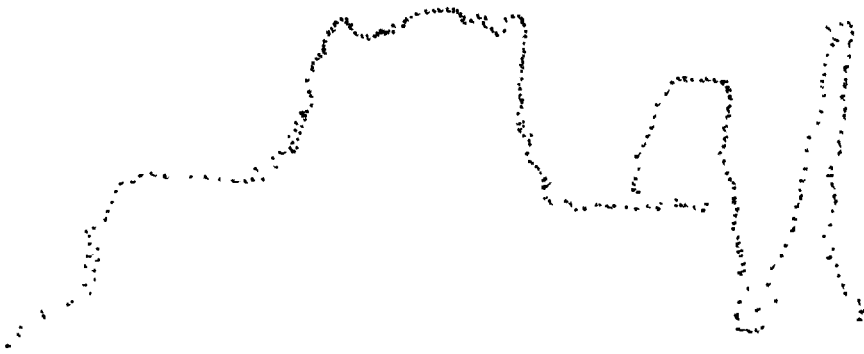
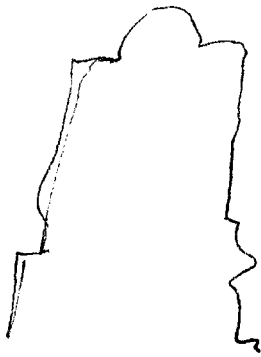
A1

no Break

Alaskan form
on ocean edge

Built up over on
edge of water

5



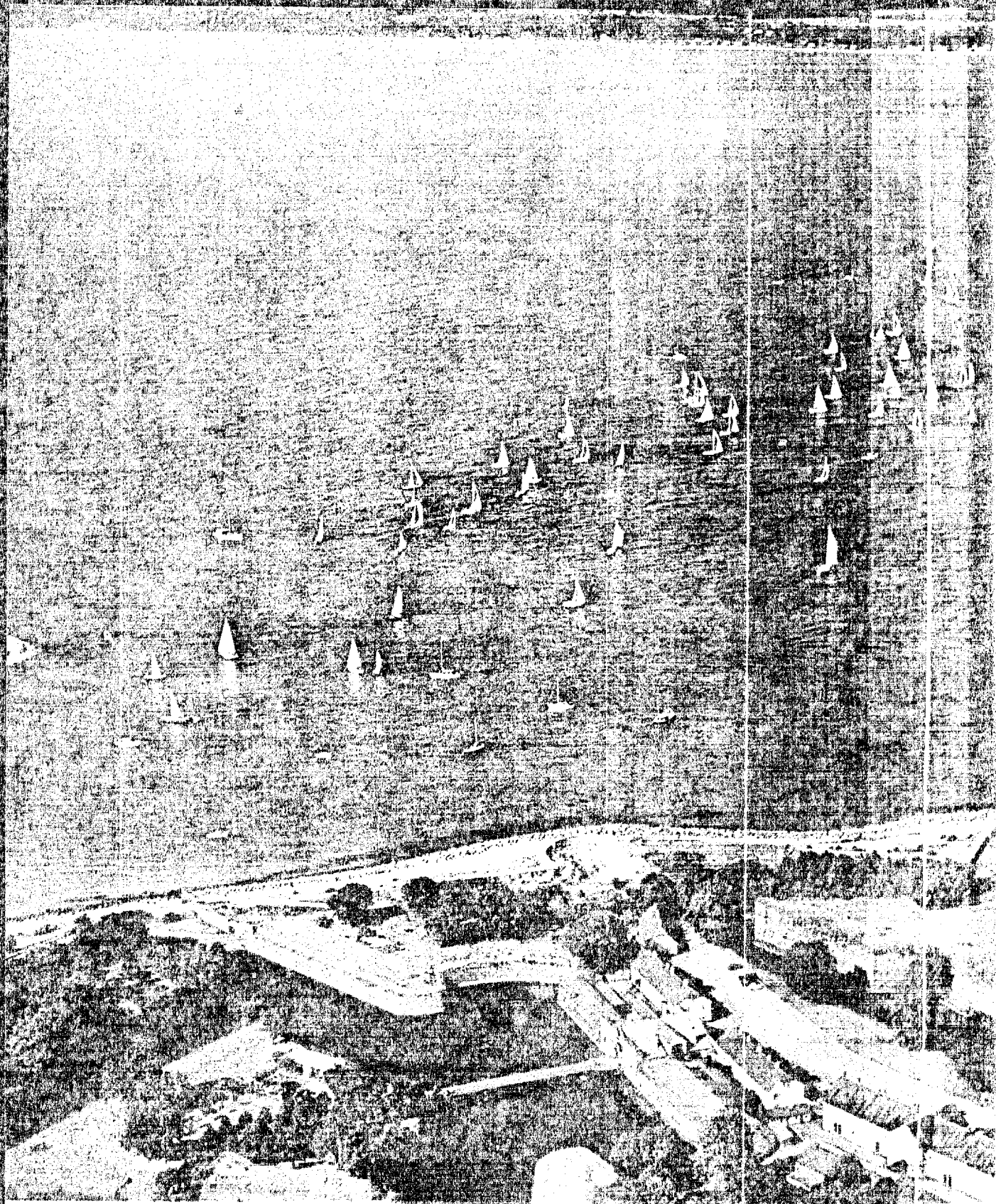
6-10-2 Break
3 units Island

Summary

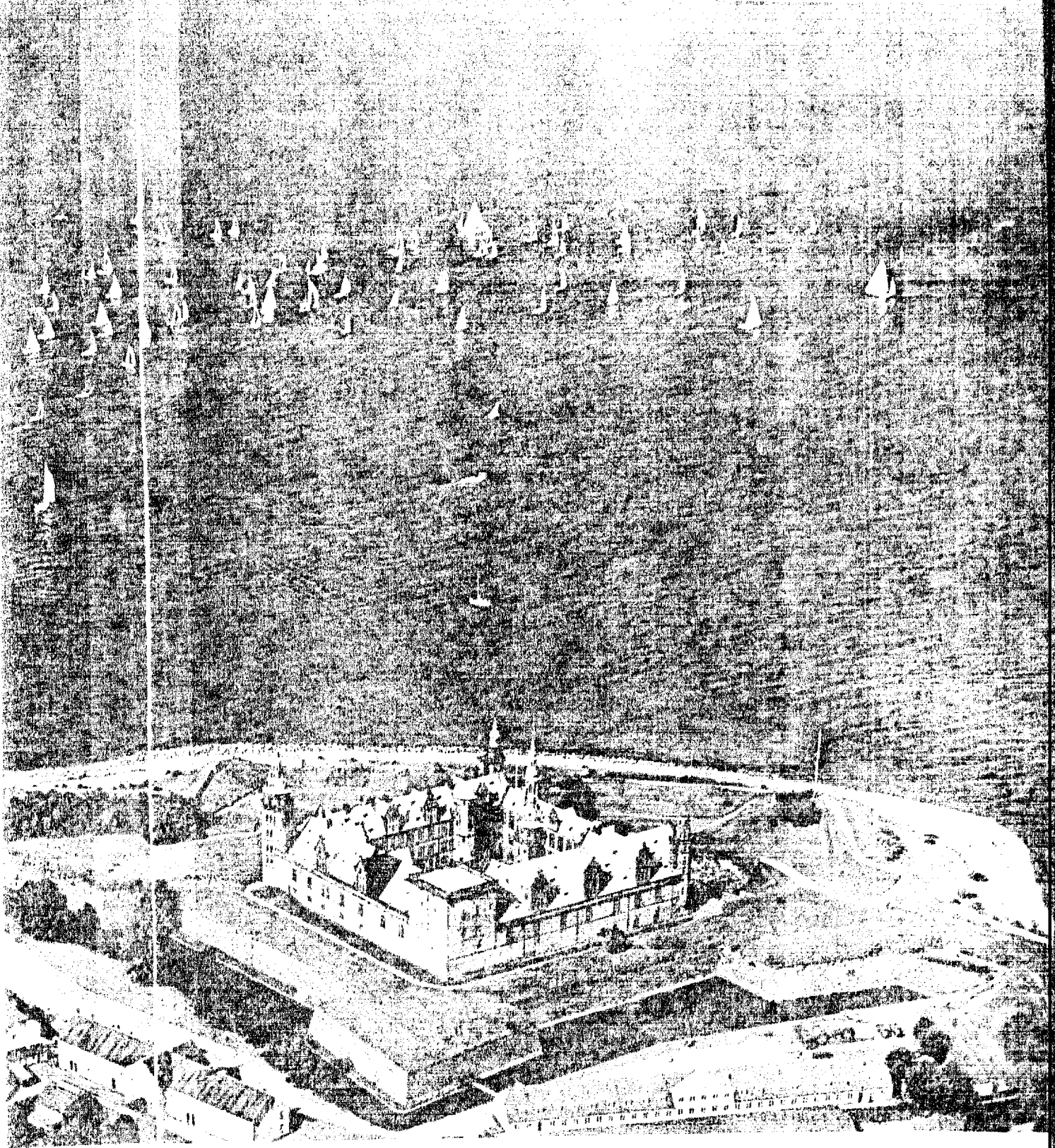
brick buildings
on land/water interface
birds, cold

w. open, expansion area
Some buildings rounded, brick buildings
tall, green, grey, black

end/site



Frolicking in a channel which is used mainly for the Hamburg's Krumborg Castle and the court of the west of the town, the regatta is held into the Baltic, exacting



... falls from merchant into ... the harbor of ... stone ...
... can back ... the sea ...

CPYRGHT

Denmark, Light of the Danes