

Paul
16 Oct 8
3:32

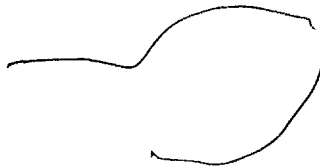
41° 21' 30" N.
71° 58' W.



A. around c
hard c
B. island
Avr Break
Island

003
05 / 13 06
13 25

41° 21' 30" N.
71° 58' W.



A. around c
hard c
B.

B.

S-2

dark chop pc
earth tones c
uperven ~~pc~~ c
rolling c
water c
winding cft
scaly cft
stone pc
angles c
jumbled together pc
regular pc
jointed c
projecting c
rounded pc
peaked c
green c
shingled c
medieval
confined cft
grey c

mystic Conn.
city by
the way.

stone texture c
blackish c

This document is made available through the declassification efforts
and research of John Greenewald, Jr., creator of:

The Black Vault



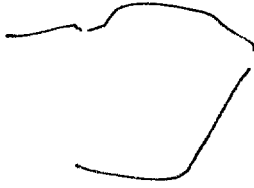
The Black Vault is the largest online Freedom of Information Act (FOIA)
document clearinghouse in the world. The research efforts here are
responsible for the declassification of hundreds of thousands of pages
released by the U.S. Government & Military.

Discover the Truth at: <http://www.theblackvault.com>

Endreed pe
DIA-RDP96-00789R001700370002-2

41° 21' 30" N.

71° 58' W



S2

A. Angle
hand
B. Buildings

A. around
hand

B.

A. going down
fluv

B. River pe

ADL Break
walled city



41° 21' 30" N.

71° 58' W.



A. moving
dross
fluid
B. water c

S-2

dark brown c
orange brown c
rocky soil pc

A. flat
solid

B. land c

bare cft
samshackle

A. flat
mushy cft

green c
calm pc
placid cft
vegetation edged cft
still cft

B.

buildings c

urban c

crowded together pc

noisy pc

dirty pc

trappier smells cft

disorganized

land/water interface

red c

tiled c

masonry c

European cft

humid pc

exotic food smells cft

41° 21' 30" N.

71° 58' W.



A. across (solid)

B. land

A. wavy flat

B. water

A. up flat manmade

B. Structures

S. r

Grey c

Cement c

Square c

tide + pines c

pastel colors pc

vegetation

bridges c

hilly cfr

blue green pc

crenellated

-



ADL Break
California
city

ADL Break
San Antonio
like a city around
a lake

41° 21' 30" N.
71° 58' W.

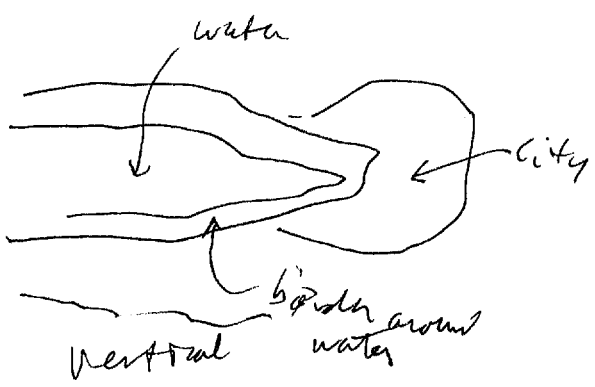


A. miss break

41° 21' 30" N.
71° 58' W.

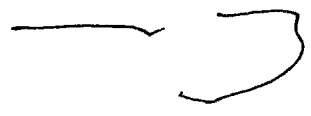


A. Confusion, no break



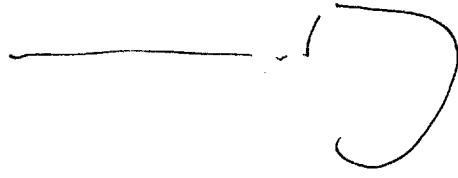
OR Break
≡ iivich
+ Lake

41° 21' 30" N.
71° 58' W.



A. Flat
land
B. Confusion
breaks

41° 21' 30" N.
71° 58' W



S-2
grey
cornice + angle c
flat roofs
peak roofs c
spires c
tapered
lines c
dark pc
large cfr
surrounded cfr
slate grey blue pc
tan c
tiled
curved pc
hollow c
bell sounds c

A. flat
above
hand
B. City
A. up down c
solid
B. Building c
A around
flats
B. Water

for Breake
Cathedral

41° 21' 30" N.
71° 58' W.



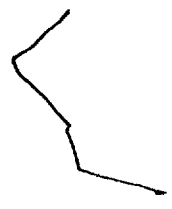
S-2
arches
multiple openings c
rectangular pc
paved c
bumpy c
wavy c
flags pc
glass c
stone pc
monumental c

A. angles c
solid
B. Building pc

for Breaks
Arch of Triumph
Brandenburg gate
in Berlin

spread out pc

chl 0 21' 30" N.
71° 58' W



A. back up
has B

B.

S-2

- Smoothly sloping off
- vertical
- overhanging pc
- stopped off
- barren smells off
- Pasty smells pc
- white c
- beach c
- wave washing c
- saline c
- shovelive pc
- sandy pc
- girders pc
- noisy pc
- clayful pc

for Breaks
3d World non western 1'
feet
multinational/multiethnic

for Break
amusement park

Break

8

Bob B. Vale
Ferris wheel

41° 21' 30" N.

71° 58' W.



S-2
Slate grey pc
calen pc
Circular pc
hard-edged c
contained pc
mossy cfr

A. around c
flint c
B. water c

Confusion Break

41° 21' 30" N.

71° 58' W.



S-2
Stone-grey pc
rough hump pc
sintered pc
blockish pc
Courtyards c
dividers c
walled c

A. Angles c
SOLY c
B. Buildings c

AOL break
palace or castle
surrounded by
moat

End
325

41° 21' 30" N.
71° 58' W.



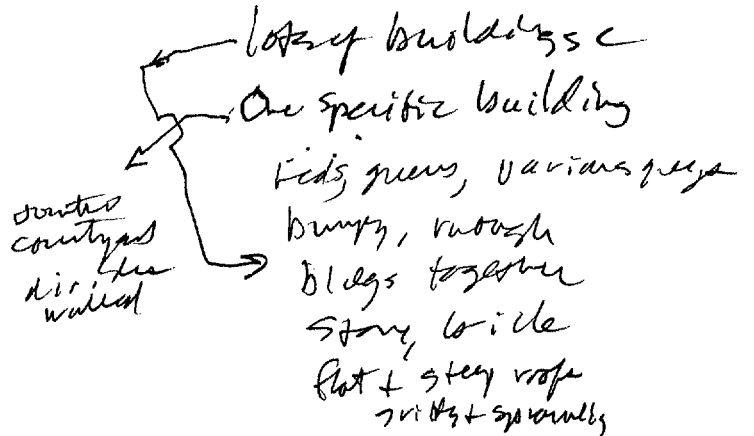
A. concrete
solid
B. Buildings c

S-2

dirty grey/brown pc
many c
set together c
adjoining c
crowded cft
sprawling pc
gritty pc
dirtys cft
flat roofs pc
steep roofs c
green c
red c
bumpy c
corrugated cft
brickwork c
serrated cft

Summary

land water interface ^{circle} ^{hand} ^{draw} ^{contour}



AOL Break

Disney land

end

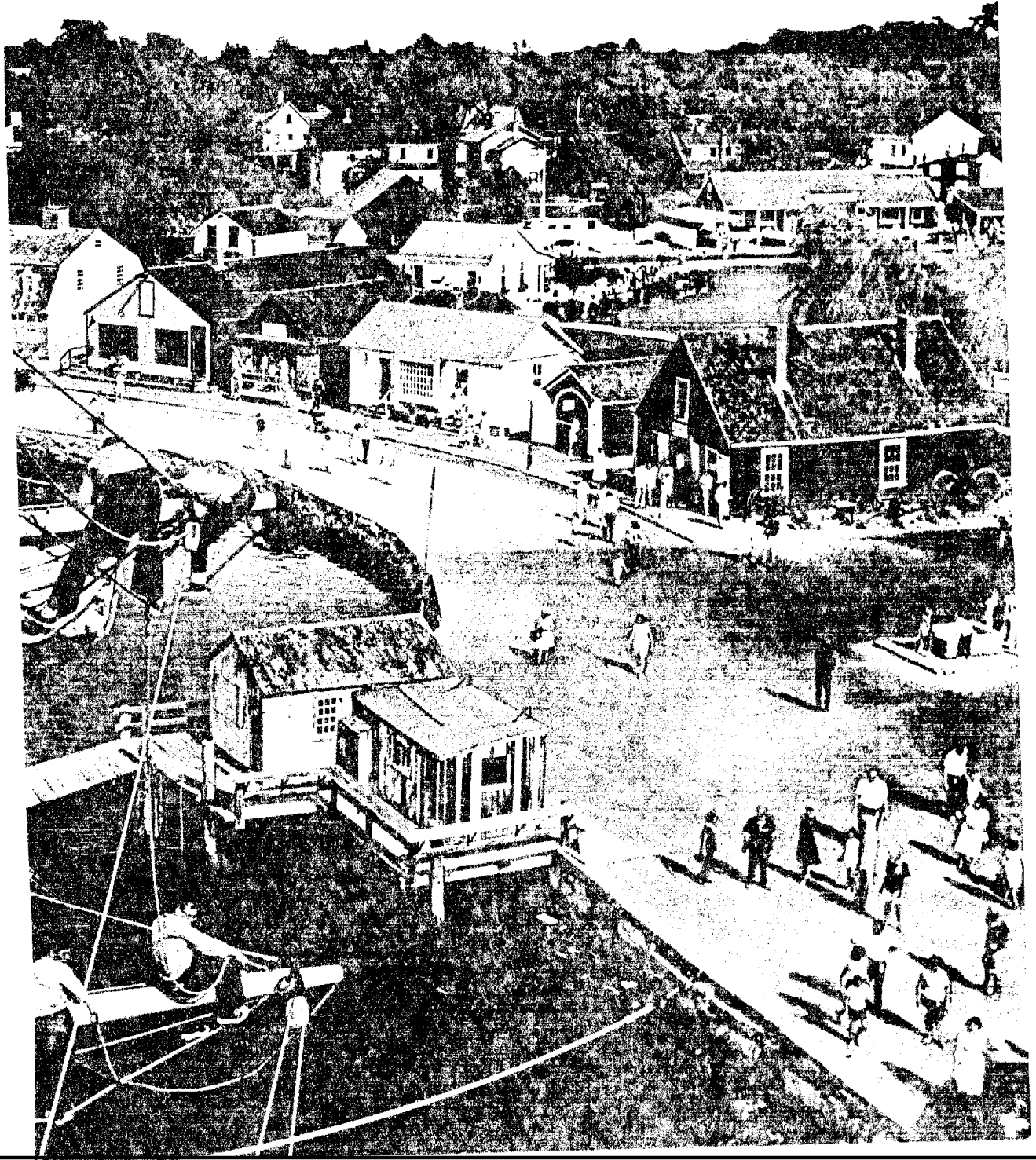
Sail Lives On at Mystic

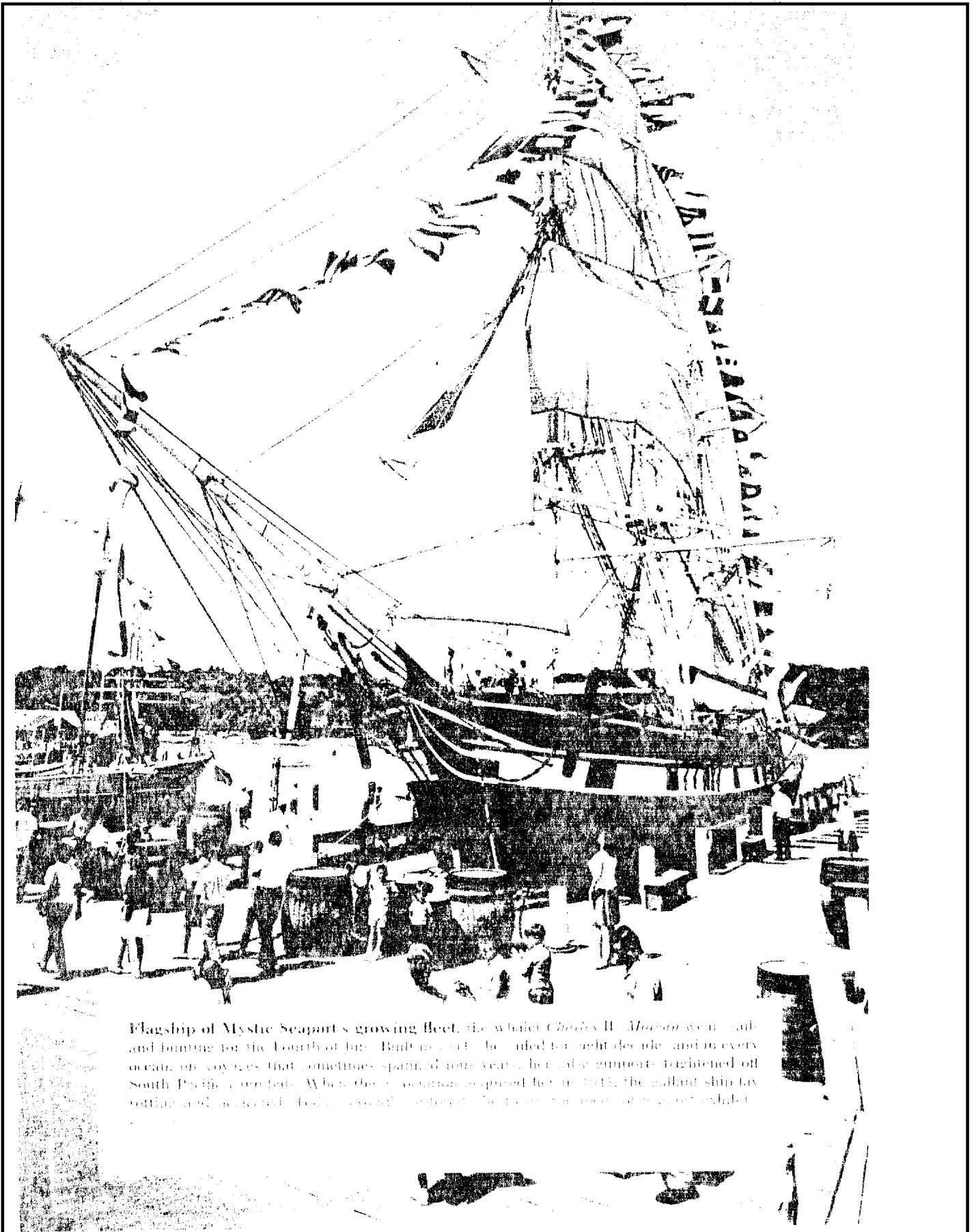
By ALAN VILLIERS

Photographs by WESTON KEMP

Aloft in the square-rigger *Joseph Conrad*, youngsters relive the rugged days of old.

EDUCATIONAL NATIONAL GEOGRAPHIC SOCIETY 221





Flagship of Mystic Seaport's growing fleet, the whaler *Charles W. Mason* went ashore and hunting for the Fourth of July. Built in 1840, she sailed for eight decades and in every ocean on voyages that sometimes spanned nine years. Her able gunports, fashioned off South Pacific canisters. When the occasion required her in 1971, the gallant ship lay rotting and neglected. Today, she stands restored, her deck and rigging a testament to the past.

CPYRGHT



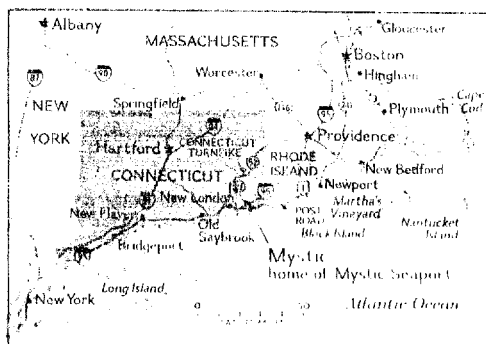
Visitors stroll past the entrance to the village of Paphos, Cyprus, in the shadow of the massive stone walls of the Venetian harbor. The harbor is a major attraction for tourists and is a major source of income for the island.



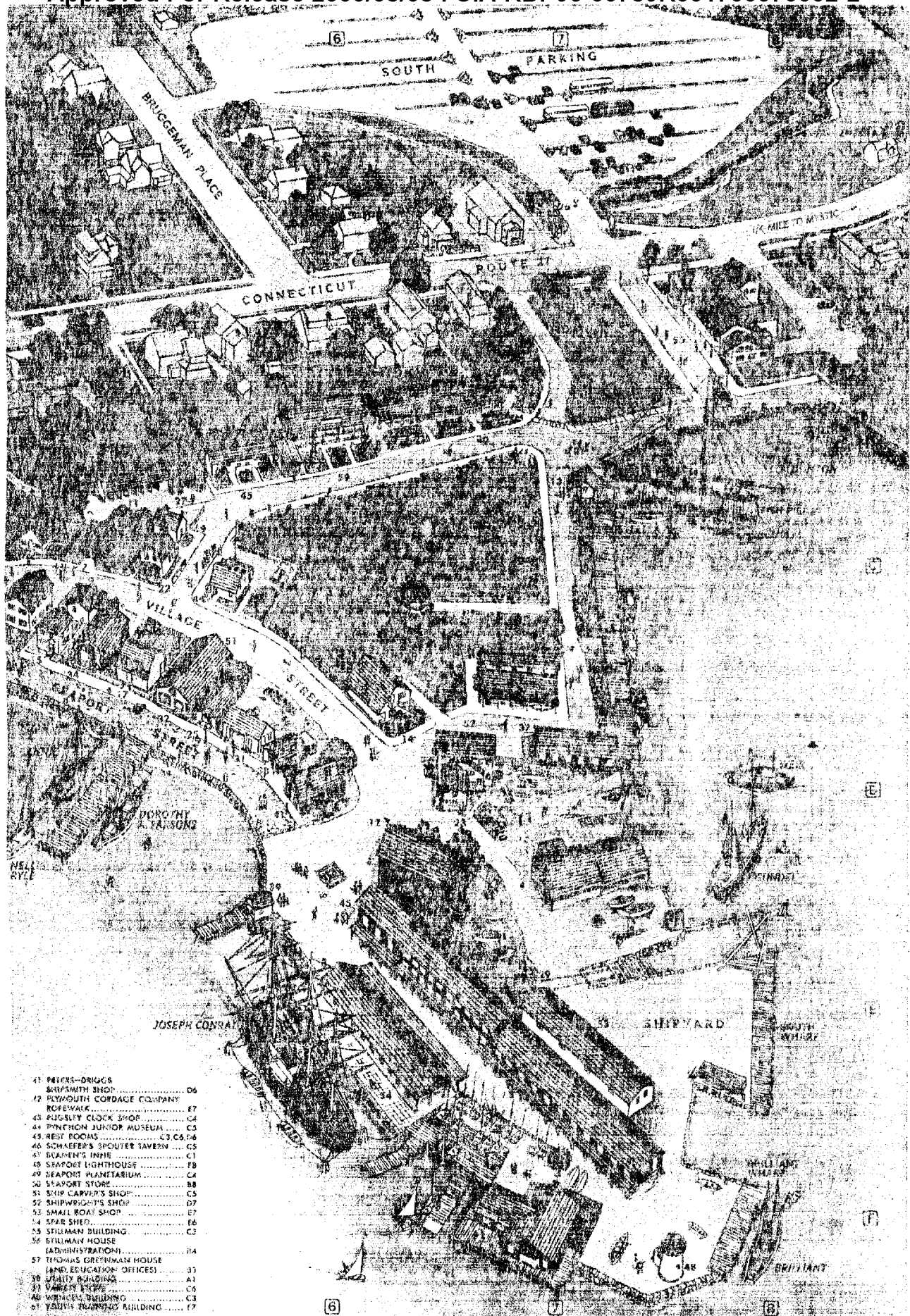
Mystic Seaport

FOR CENTURIES the men of Mystic built ships—schooners, whalers, clippers—and sailed them to earth's far corners. Then steam overtook the windships, and one by one they died. Alarmed, three citizens formed the Marine Historical Association in 1929, and out of it grew the living maritime museum called Mystic Seaport. To its site came gifts of small craft and schooners, anchors and heirlooms. Today more than 400,000 persons a year come to rediscover a glorious era.

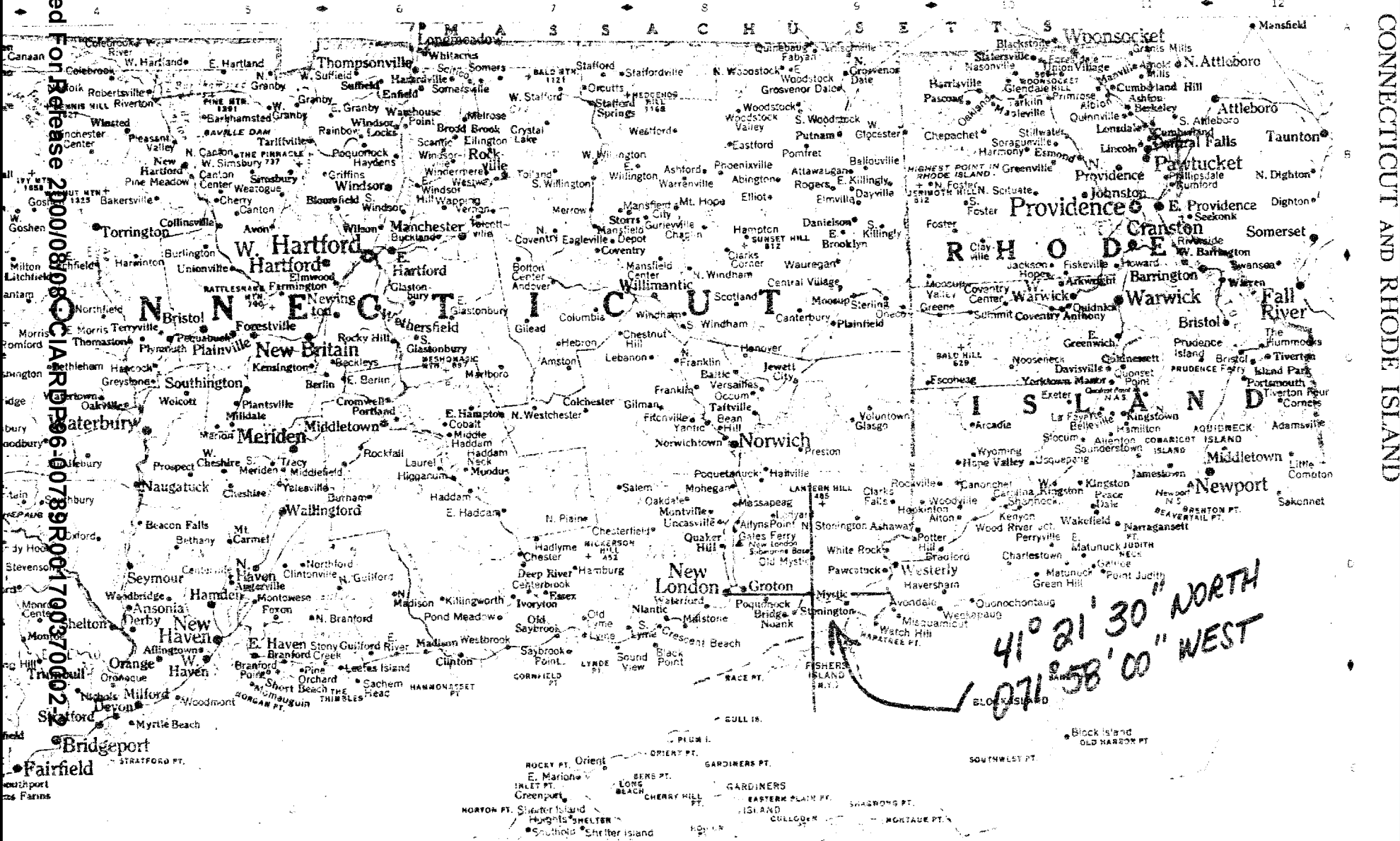
MYSTIC RIVER



1	ADMISSIONS GATES	RR.C.1	19	FIRST AID STATION	C5
2	AIDS TO NAVIGATION BUILDING	C2	20	FISHTOWN CHAPEL	C5
3	ALPHA MEETING HOUSE	C3	21	G. W. BLUNT WHITE LIBRARY	C2
4	AUSFRAIT'S SHED	D7	22	GEO. H. STONE GENERAL STORE	C5
5	BANDSTAND	C6	23	GREENMAN BROTHERS SHIPYARD OFFICE	C7
6	BARTRAM BUILDING (CURATORIAL AND ACCESSIONS STAFF)	C2	24	HARBOR MASTER	E4
7	BOARDMAN SCHOOLHOUSE	C5	25	HOOPEMAKER'S SHOP	D5
8	BOAT SHED	E7	26	INFORMATION BOOTHS	A7, B1
9	BRIGHTBERRY APOTHECARY AND DOCTOR'S OFFICE	C5	27	LIVERY STABLE	C5
10	BUCKINGHAM HOUSE	C4	28	MALLERY BUILDING	C3
11	CARRIAGE SHED	C5	29	MARINE RAILWAY	E2
12	CHARLES MALLERY SAIL LOFT RIGGING LOFT AND HULL FISH CHANDLERY	E6	30	MILDRED C. MALLERY MEMBERSHIP BUILDING	C4
13	CLAM SHACK	E2	31	MYSTIC BRIDGE WEAVERS	D6
14	COFFEE HOUSE	E6	32	MYSTIC PRESS	D5
15	COUNTING HOUSE	C5	33	MYSTIC RIVER DIORAMA	C7
16	CURATORIAL STORAGE AND RESTORATION FACILITY	A2	34	MYSTIC RIVER COOPERAGE	C5
17	FORWARDS HOUSE	D5	35	NEW YORK YACHT CLUB STATION 10	D-1
18	FACILITIES FOR VISITING YACHTSMEN	E1	36	NORTH BOAT SHED	C2
			37	NOYES MEMORIAL BUILDING	D7
			38	OLD RELIANCE FIREHOUSE	D6
			39	OYSTER SHACK	D5
			40	PANTRY AND BOAT SHEDS	B7



- 41. PETERS-DRIGGS D6
- 42. SEAPORT SHIP D6
- 43. PLYMOUTH CORDAGE COMPANY D6
- 44. ROSEWALK E7
- 45. PUSLEY CLOCK SHOP C4
- 46. PYNCHON JUNIOR MUSEUM C5
- 47. REST ROOMS C3, C4, D6
- 48. SCHAEFER'S SPOUTER TAVERN G5
- 49. BEAUMEN'S INNIE C1
- 50. SEAPORT LIGHTHOUSE F8
- 51. SEAPORT MARINEBARIUM C4
- 52. SEAPORT STORE B8
- 53. SHIP CARVER'S SHOP C5
- 54. SHIPWRIGHT'S SHOP D7
- 55. SMALL ROAT SHOP E7
- 56. SPAR SHED F6
- 57. STEWART BUILDING C3
- 58. ELLMAN HOUSE B4
- 59. THOMAS GREENMAN HOUSE A1
- 60. (AND EDUCATION OFFICES) C3
- 61. HEALTH BUILDING C6
- 62. VANDER BUREAU C5
- 63. WITCHAM BUILDING C3
- 64. YOUTH TRAINING BUILDING F7



41° 21' 30" NORTH
071° 58' 00" WEST