

129 July 88

~~SECRET~~/NOFORN - ~~HANDLE~~ VIA SKEET CHANNELS ONLY

PROJECT SUN STREAK (U)

WARNING NOTICE: INTELLIGENCE SOURCES AND METHODS INVOLVED

PROJECT NUMBER: 8815	SESSION NUMBER: 2
DATE OF SESSION: 16 SEP 88	DATE OF REPORT: 23 SEP 88
START: 1345	END: 1515
METHODOLOGY: CRV	VIEWER IDENTIFIER: 011

1. (S/NF/SK) MISSION: Access, describe, and identify an object: Target "B".
2. (S/NF/SK) VIEWER TASKING: The viewer was informed that the perceptions during the first session (on 14 Sept) were associated with an object. With this in mind, 011 was provided with the coordinates for the target. After reacquiring the target, the viewer was moved to its interior and, later, to its [operational base].
3. (S/NF/SK) COMMENTS: None.
4. (S/NF/SK) EVALUATION: [] *2* *D*

SG1J



CPT, USA

~~SECRET~~/NOFORN - SKEET CHANNELS ONLY

CLASSIFIED BY: DIA-DT
DECLASSIFY : OADR

This document is made available through the declassification efforts
and research of John Greenewald, Jr., creator of:

The Black Vault



The Black Vault is the largest online Freedom of Information Act (FOIA) document clearinghouse in the world. The research efforts here are responsible for the declassification of hundreds of thousands of pages released by the U.S. Government & Military.

Discover the Truth at: <http://www.theblackvault.com>

SESSION SUMMARY

VIEWER: OII
SESSION: 16SEP88
START: 1345
STOP:
METHOD: CRV

THE TARGET APPEARS TO BE SOME SORT OF VEHICLE (AOL- LIKE A SUBMARINE). THE INSIDE OF THIS VEHICLE IS DIMLY ILLUMINATED IN COLORS OF YELLOW AND RED. THE INTERIOR SHAPE IS ROUNDED AND THERE IS A CONTROL PANEL CONSISTING OF A LARGE SCOPE, MANY LIGHTS, GAUGES, AND A SET OF SLIDING CONTROLS (AOL- LIKE AN AIRCRAFT COCKPIT). SEE THE SKETCH ON PAGE 4 OF THE SESSION.

LOOKING FOR AN OPERATIONAL BASE, TWO LARGE MULTI-STORY BUILDINGS STAND OUT. ONE OF THESE BUILDINGS APPEARS TO BE OPERATIONS / ADMIN SUPPORT, AND THE OTHER HAS THE APPEARANCE OF A LARGE HANGAR OR WAREHOUSE (AOL- REMINDS ME OF TEMPELHOF AIRFIELD, WEST BERLIN). SEE SKETCHES ON PAGE 5 OF THE SESSION.

110698
259179



A. across, angle up
" " "
" " "
hard
B. structures

110698
259179



A. across, angle up.
curving around.
curving, angle across
hard/soft
structure/land

110698
259179



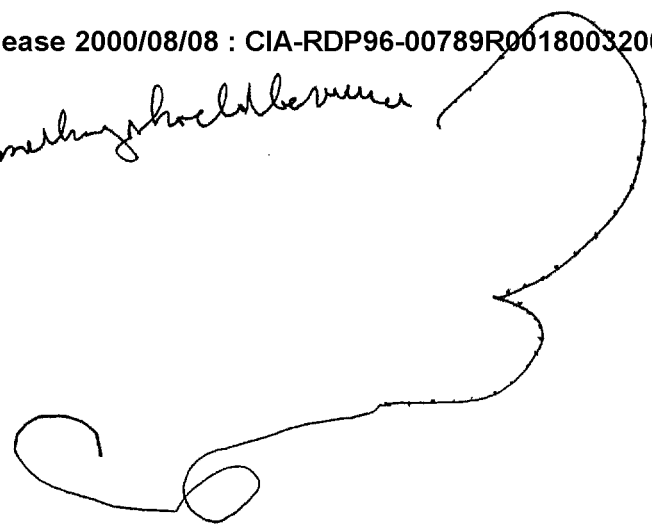
A. curving up, up, curving
over
hard/semi-hard

B. _____

S-2
blues
light blue
med blue
white
grey
smooth
soft
hard
black

Asa back
submarine

inside the structure something should be visible



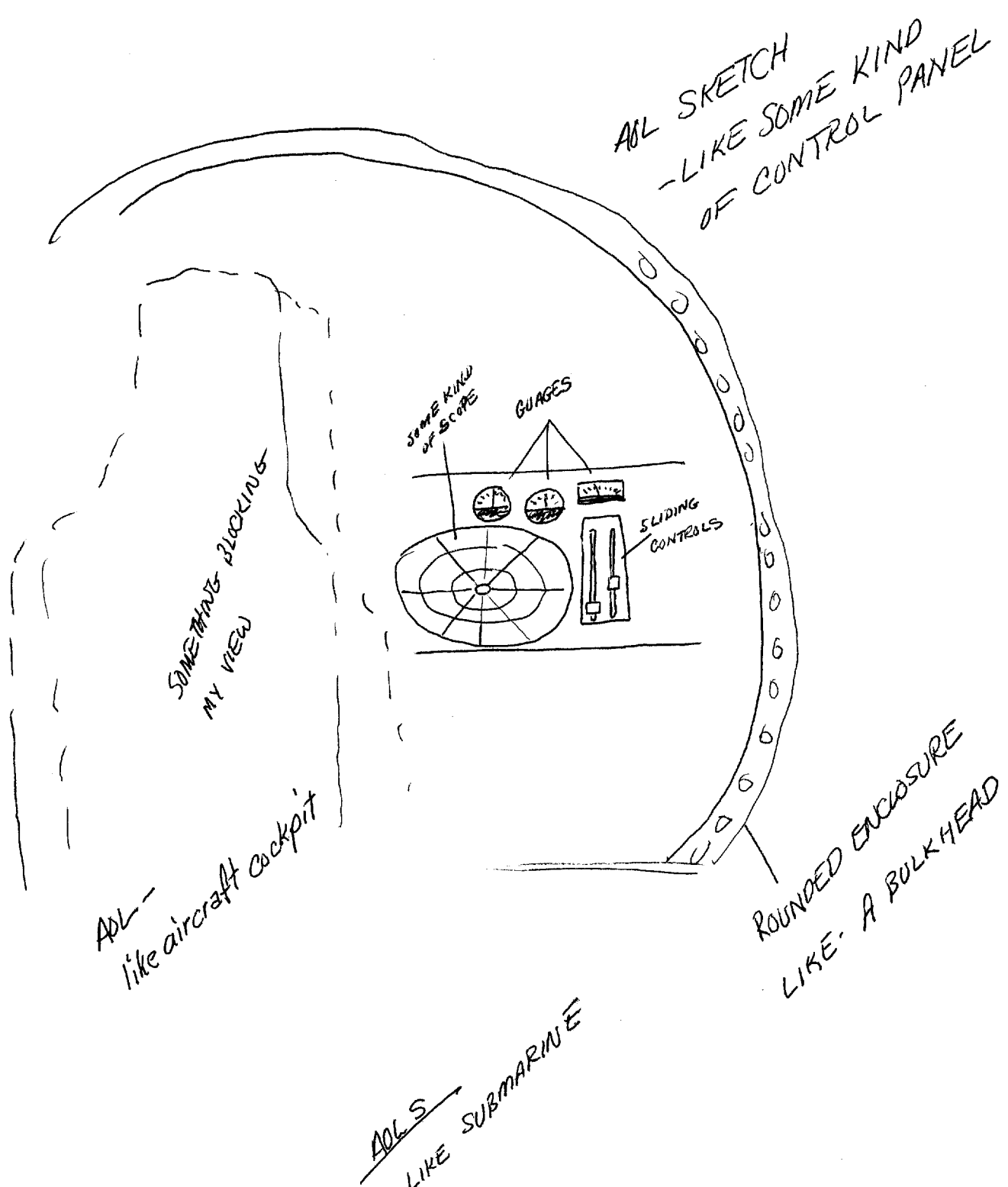
a. incline up, curving
around, angle across,
curving around, across,
curving down, loop,
angle across, curving
up and around.

hard

b. structure

S-2

dark
dim
red
yellow } INSIDE



Operational Base



OPERATIONAL BASE!

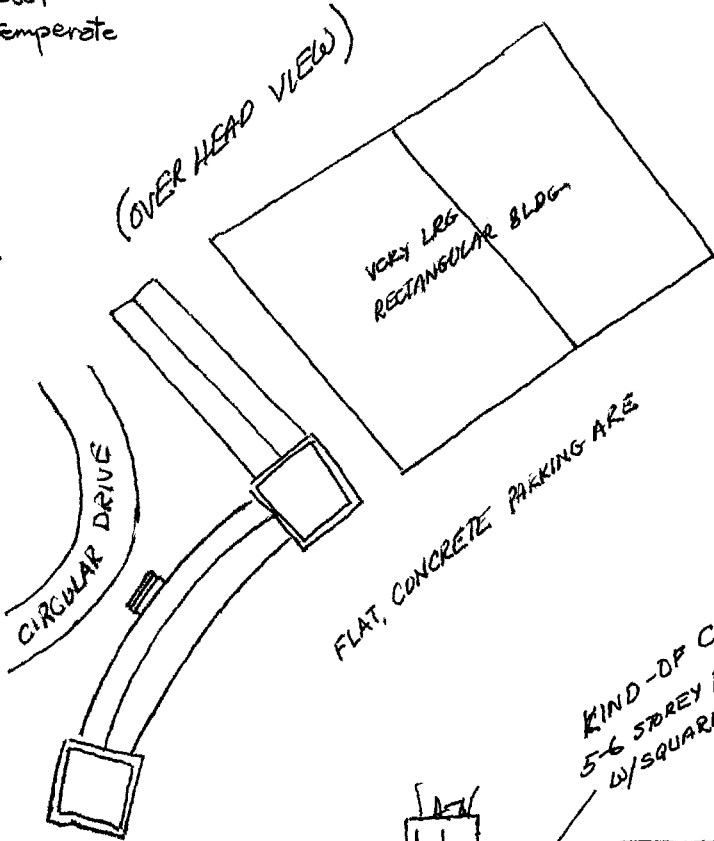
S-2 D AI EI T I AOL A/S

- green
- brown
- reddish brown
- gritty
- sandy
- warm
- cool
- temperate

deciduous trees

AOL/S
Northern
E. Germany

(OVER HEAD VIEW)

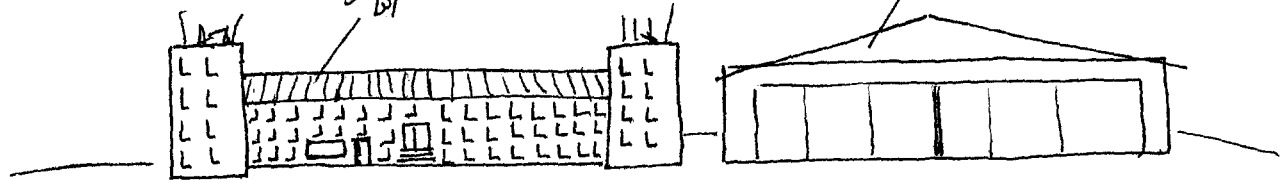


LOCATION!
STRUCTURE!

KIND-OF CURVED
5-6 STOREY BLDG
W/SQUARE ENDS

SOMETHING STICKING
UP FROM FLAT
ROOF OF TOWER-LIKE STRUCTURES

VERY LRG WARENSE/HANGAR TYPE
BLDG



LARGE, FLAT, CONCRETE APRON

(FRONT, GRND LEVEL VIEW)

AOL BREAK
Tempelhof airfield
Berlin