

①

19 MARCH AFTER ATTACK
TWO CONVOYS LEAVE SITE
FIRST TACTICAL SECOND CONSISTING
OF VANS AND TRUCKS LEAVES
SOME TIME LATER.

AT WIDE POINT ~~PROP~~ SOLDIER
IN BLUE UNIFORMS ARE SMUG
AND , THERE IS A
MAN IN AUTHORITY HERE FROM
SITE WHO IS HIGHLY PISSED.

REPLACEMENT BEGINS ON
DAMAGED EQUIPMENT ON ONE
FOR ONE BASIS RATHER THAN
REPLACING PARTS. A TOWER
IS ERRECTED THAT LOOKS LIKE
A MICRO WAVE TOWER BUT
IS ONLY ABOUT 10 FT HIGH
SUBMARINE IS MOVED AND
TESTED. FRONT IS ELEVATED

AND LOWERED BY HYDRAULIC

This document is made available through the declassification efforts
and research of John Greenewald, Jr., creator of:

The Black Vault



The Black Vault is the largest online Freedom of Information Act (FOIA) document clearinghouse in the world. The research efforts here are responsible for the declassification of hundreds of thousands of pages released by the U.S. Government & Military.

Discover the Truth at: <http://www.theblackvault.com>

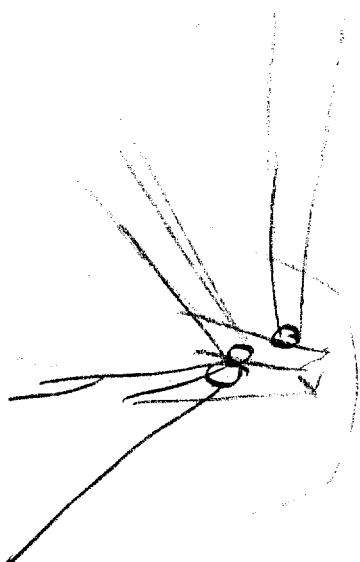
A PERIMETER OF FOOT
SOLDIERS IS ESTABLISHED IN
360°. 3 HEAVY ARMOR
VEHICLES MOVE BACK AND
FORTH BETWEEN BERM AND
ROAD. LARGE METALLIC SLED
LIKE OBJECTS (GENERATORS?) ARE
UNLOADED FROM TRUCKS. THROUGHOUT
THE DAY TOWER GETS HIGHER
AND IMPROVEMENTS ARE MADE
IN DEFENCE OF BERM. IN
AFTERNOON A VERY LARGE
FLAT METALLIC WITH ARMOR
VEHICLES ON BACKS LEAVE
SITE #1.

AT NIGHT TIME LIGHTS
(VERY BRIGHT) ARE TURNED ON
IN COMPOUND. WORK (WELDING
CLANGING HAMMERING) GOES ON

3

UNTIL AROUND 2200. WHEN
MOST OF LIGHTS ARE TRUCKS
OR HOWEVER INSIDE OR
BUILT UP AREA CONTINUED TO
BE PARTIALLY LIT.

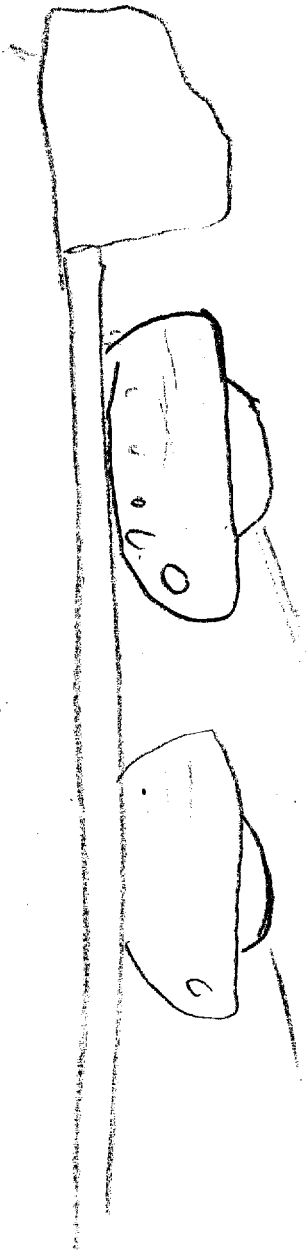
SITE 2



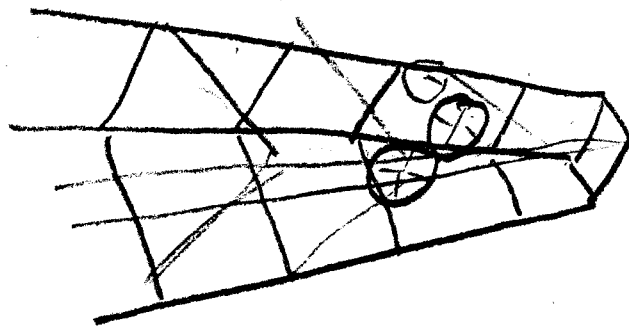
POWER
 ANGLES
 DT
 DISCS

11/11

SITE 1

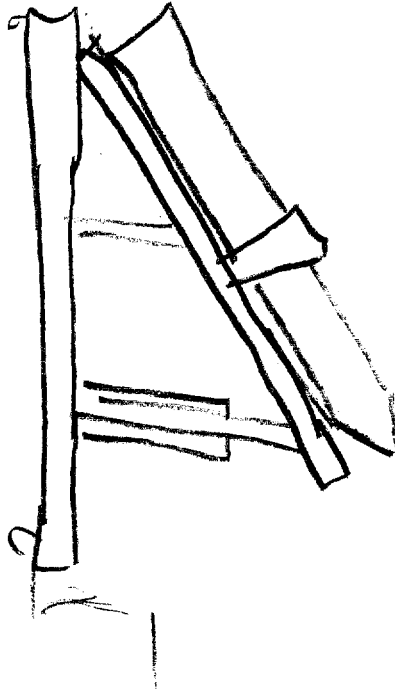




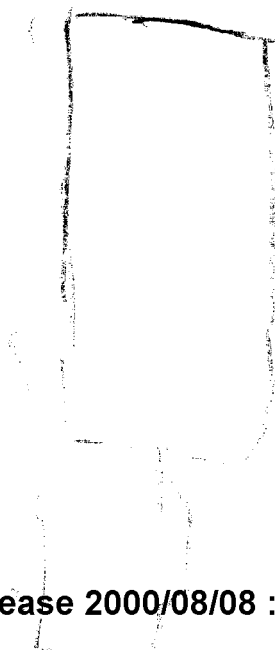
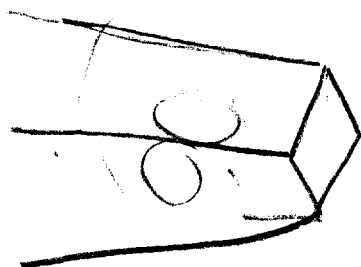




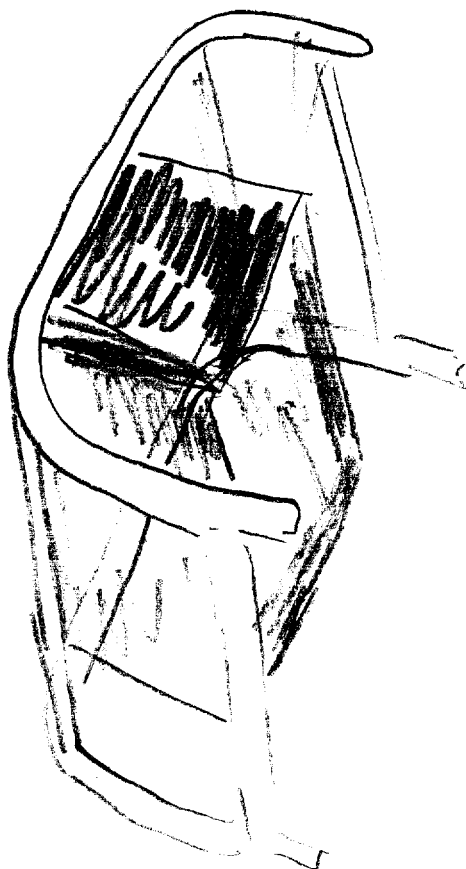
KNOB
ON
SIDE
OK
SAD MARK



TESTING
SAD MARK



TOWN
A9
F.L.V.



SLED LIKE
THINGS
TRUCKS
UNLOADS