

099

23 APR 86

ST 1322

Ed 1430

MONITOR Ed

23 1322 APR 86

FF Mead, Md

143850
491920

I 0
B
prop

A. ocean
blast

B water

A moving up
ocean

hard

B land

A moving
blast

B water

A ocean
land

B LAND

A ocean
hard

B land

4/24 143850

This document is made available through the declassification efforts
and research of John Greenewald, Jr., creator of:

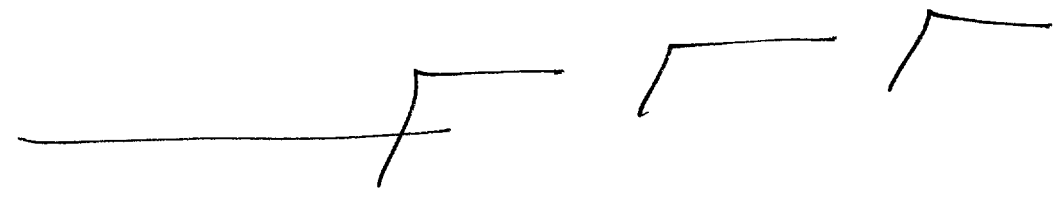
The Black Vault



The Black Vault is the largest online Freedom of Information Act (FOIA)
document clearinghouse in the world. The research efforts here are
responsible for the declassification of hundreds of thousands of pages
released by the U.S. Government & Military.

Discover the Truth at: <http://www.theblackvault.com>

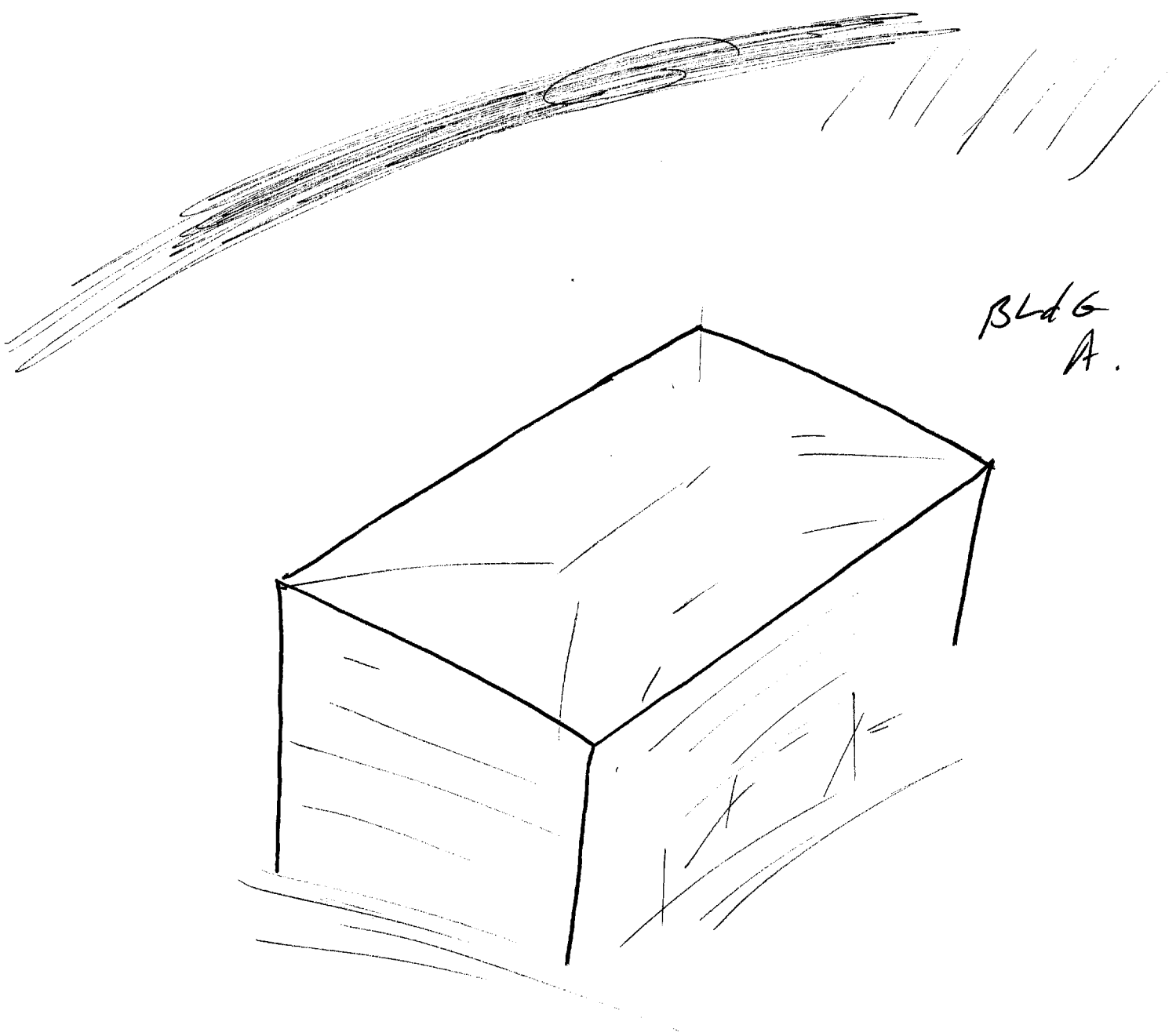
143 8 50
491 920



A across
hard
B land

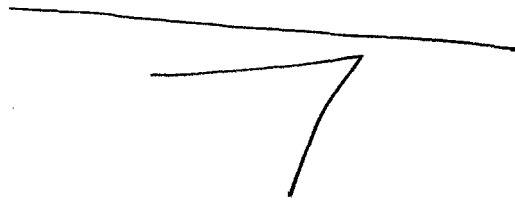
A up
angle
across
hard
man mad

B structures



Bldg
A.

something should
be visible



A. across
hard
B land

A across
angle
down
hard
manmade
B structure.

52 s
gray
black
dark
rough

cool
crisp
clear

sterile tanks
slony tank

not
Tank
granite
Buck
Like

S2
loughy smell
y

5
AOL BLeak
smells like
Yeast.

shum sound
low sounds.

low
squared
angular

AI Break
little leery
tingling in
shoulders



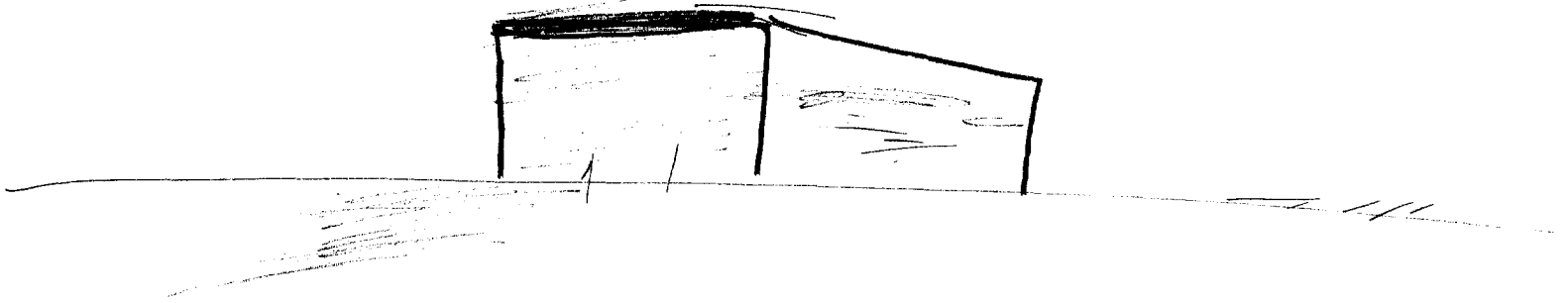
SMALLER AND SHORTER
THAN BUILDING A.

PERHAPS 2 stories.

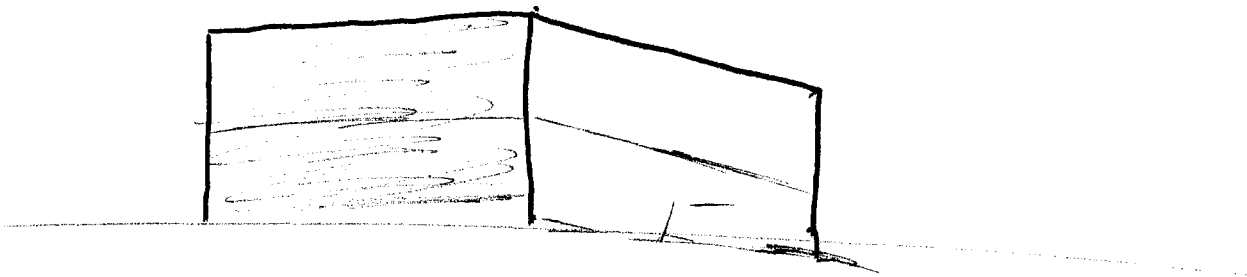
;

Probably the small
building is very solid.

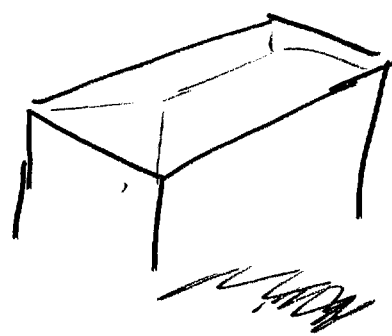
ALL Break
Till Box.



SK



A.



D



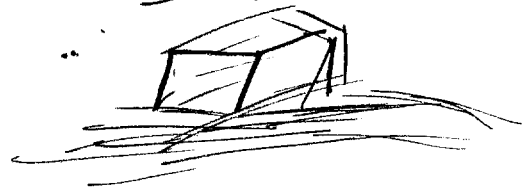
DARK
BROWNISH
ANGULAR
Solid
FIRM

STRUCTURE

like string,

REIN FORCED
SK ENLARGED.

steep

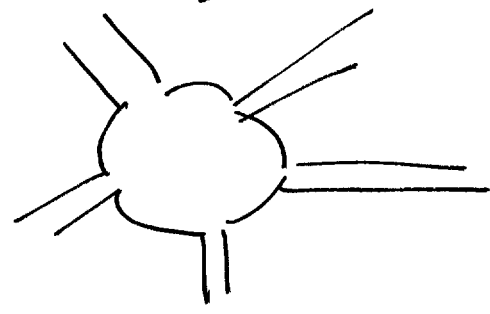


ROUGH

SECURED
SET APART
SENSITIVE
GRAPHIC

RADI

SK



S2

9
A/5

TRENCH



EXCRITMENT



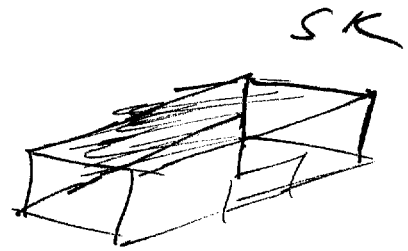
'

THICK
BUKY

INSIDE

OPEN
i

BoxLIKE



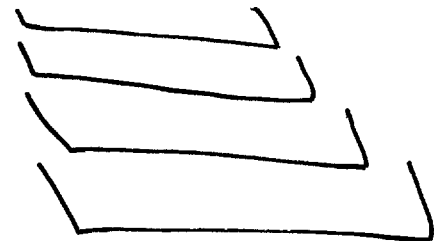
AI BREAK SOLID ROOF.
I feel enclosed,
cut off, like I
am inside an
ammo bunker
As such...
feel dizzy,
light headed.

AOL BREAK
Storage Area.
AOL Break
reminds me of
underground ammo
bunker in Munich.

Bldg A.

LARGE
VAST
TIERED

LEVEL SK



SEPARATED
COMPOSED

~~DOE~~

DOCTRINE

BUSINESS LIKE

VARIOUS LEVEL
 INTERLINKED
 DIRECTED
 GUIDED
 AIMED

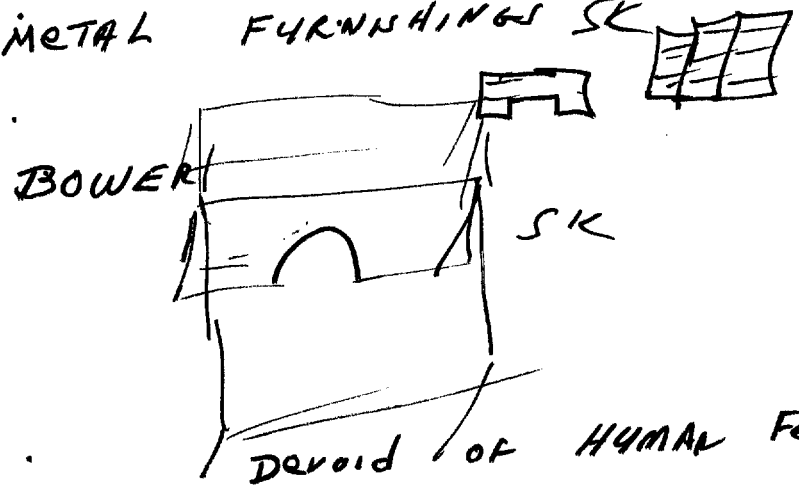
PURPOSE
 THOUGHT-OUT
 PLANNED
 LONG-RANGE
 DEVELOPED
 DEVELOPING
 PSYCHO

SEMBLANCE
 ASSEMBLANCE

STRUCTURED
HEIRARCHY
CLANDESTINE
COVERT

AOL BREAK
like the head/body
of an octopus w
leg trunking out.

STERILE INVORMENT
METAL FURNISHINGS SK



AI Break
feel very warm
very flushed.

MONITORING
ENTERPRIZER
SUBJECTION

LIGHTS ○ ○ ○ SK
○ ○ ○

S2

12
A/S

TABLES
PANELS
GADGETS

SILVER
WHITE

CO.

CONTINUOUS ACTIVITY

ATTENTION

IMPORTANT

SELF-FULFILLMENT
PRIDE
DEDICATION
!

AsL Break
acknowledgment

ENTERPRISE

OBJECTS
EMANATIONS ?

CONSOLES
BOOTHs.
CONTROL

ENTERPRISE

AOL Break
STAR SHIP.
CAPT KIRK.

ENTERPRISE
ATTRIBUTES
EMANATIONS ?

- WHITE
- BLUE
- CLEAN
- CLEAR
- LARGE
- ORDERLY
- MISSION
- PURPOSE
- STRUCTURE
- RANK
- HEIRARCHY
- PROFESSIONAL
- MONITORING
- GUIDING
- LASTING

Enterprise
Subjects
emanations ?

DARK

Enterprise
Subjects
emanations ?

MASSIVE
KEEPING
INFORMATION

Enterprise
Topics
emanations ?

LIGHTS
KNOWLEDGE
CONTROL
BLEEDING
BOUNDARIES
ON-GOING
ADVANCEMENT
CURTAILMENT
STEALING
STAMPING
CROSS/PURPOSES
DETERMINING
MIN LEADING

MISLEADING
OBJECTS
EMANATIONS ?

GOAL
DEVICE
STORY

Misleading
attributes
emanations ?

LIGHTS
DESIRE
POCKETTS

Misleading
attributes
emanations ?

people
cover
information

Misleading
Subjects?
Explanations.

GOALS
END-
MEANS
TOPICS
DESIRES

Misleading
Topics?
Explanations?

stories
research
articles

Misleading
Topics?
Explanations?

CONSTRUCTED
ANALYTICS
DEVICES

Device
Objects
emulations?

~~META~~

Adl Brach
Metallic

Device
objects
emulations?
graphs
printers
Tele-types

Device
attributes
emulations?

ROUND
BOX-LIKE
SYLHAPATED
IN-HARMONY
ADJUSTING
CORRECTING
DIVERGING
CONVERGING
ON-GOING

Device
Subjects
Innovations?

GLOBAL
HEMISPHERIC

Device
Topics
Innovations?

Routing
understanding
digging
DOWN-LINK
DELEWARE
DEW LINE

STAGE VI

19

S2

D

AI

EI

T

I

AOL

A/S

POWER

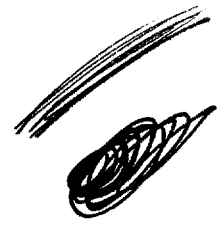
UP
BACK

WHITE

FEELING
LIKE HEAT

DIRECTED
AIMED
DETRACTED

BEAM



~~BO~~
CIRCUITS
TUBES
DISAPPEAR

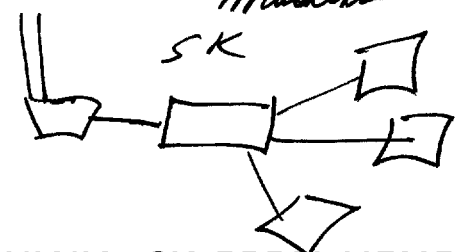
LIKE BOWL

interface w machine
dots + syntax

grapho
comparators
digits
symbol
sheets

LIKE MATHS

Machine interface w man
machine



- 1) Extremely complicated
- 2) extremely sophisticated.
- 3) humans are not involved until late in process.
- 4.) SYMBOLS, DIGITS PASSED FROM MACHINE TO MACHINE.
- 5) ONE Generalist Machine many specialist Machines.

SZ

D AI EI T I AOL A/S

DARK
BLACK
OLD

AOL BREAK
(V) SPACE
AOL BREAK
SHUTTLE

HEIGHT

MINUTIA

CONFUSION
BREAK

SOLID
FIRM
RECTANGULAR

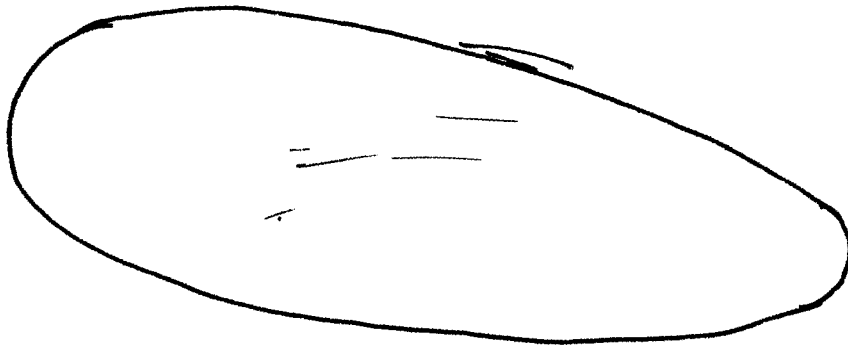
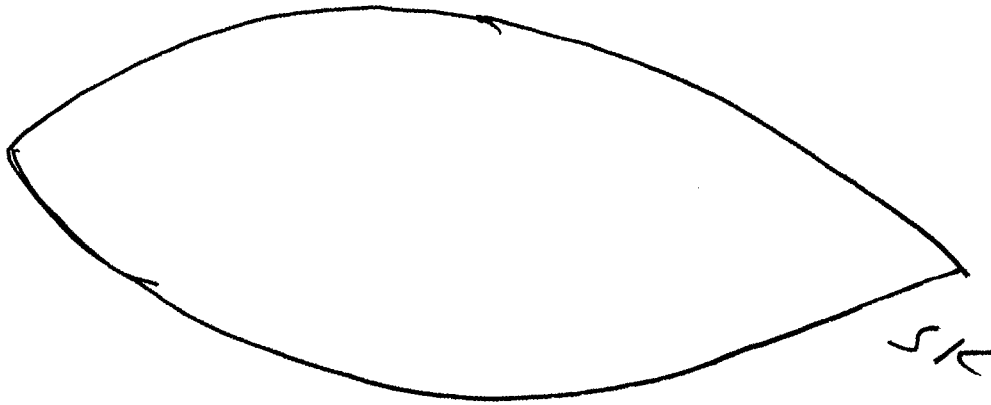
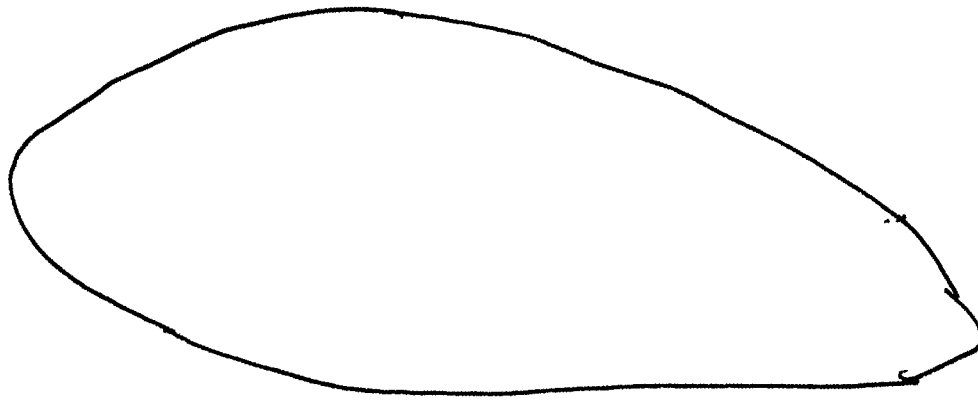
CONSTRUCTED
PLACED
SITUATED

DEVICE
MONITORING

COLD
WARM

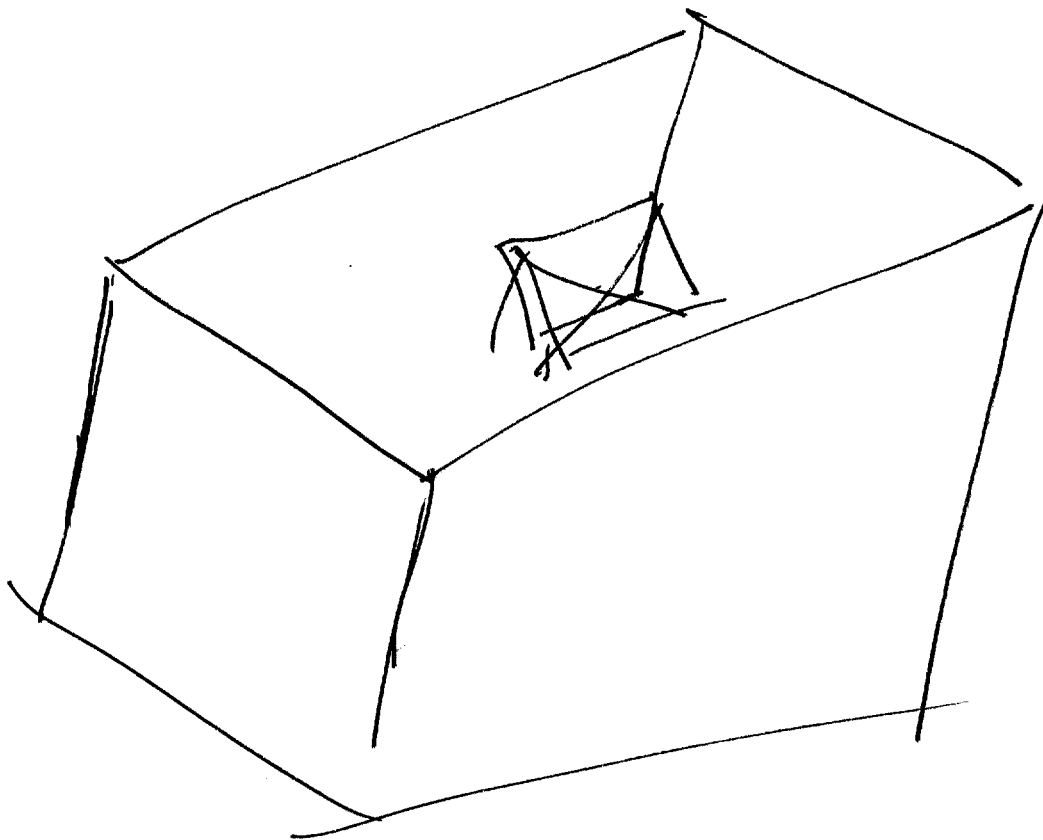
CYLINDRICAL
AI BREAK
CAUTION

22

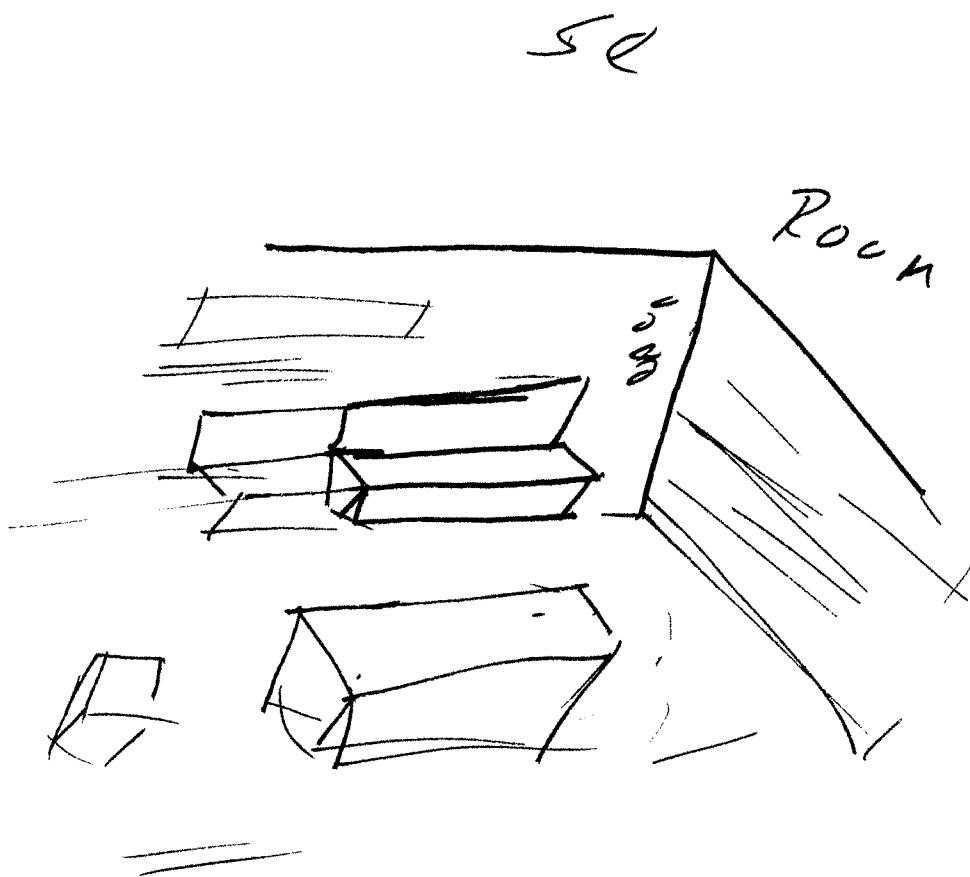


ll





25



MACHINE
LIKE TALK
TO MACHINE
HUMAN
INVOLVED
AT END OF
PROCESS

GRAPHS

OBJECTS

EMANATIONS ?

P

AOL Break
TAPIR TOWELS

Graphs

objects

emanations ?

LINES

COLOR

BI-NARIES

BUNCHES

Graphs
attributes
emanations ?

colors

squares

cubes

diversifying

sorted

categorized

Graphs
Subjects
Emanations?

DI-ODJ?
PARAMETERS
BOUNDARIES
LIMITS

Graphs
Topics
Emanations?

Catalogues

Graphs
Topics
Emanations?

Catalogues

SORT

Graphs
Topics
Emanations?

BLUES
STRESS
P.

ROL_Brand
Plumley

Graphs
Topics
enumerations?

cards
sorting
limiting
establish
Develop
Down - Link
Dust

CATALOGUES
Objects
Emanations?

FILES
FUNCTIONS
ON-GOING
COMPARATIONS
SCHEMATICS

Catalogues
Attributes?
Emanations.

LINES
GRAPHS
CHARTS
COLOR
DIGITS.
BL - LUMINARIES
DIVERGENCE
CASUALITY
SYSTEMATIC

Catalogues
Subjects
Emanations

CODES
COURSE

Catalogues
Topics
Emanations?

ROUTES
MEANS
ENDS

Catalogues
Topics
Emanations?

JUNCTURE
SINE
TANGENTS
SUFFICIENCY
SURFACE
RATIO