

Approved For Release 2000/08/08 : CIA-RDP96-00789R003000350001-0

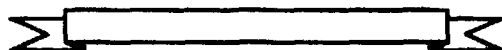
# Research of Anomalous Mental Phenomena Proof-of-Principle and Protocols

by

Edwin C. May, Ph.D.

Science Application International Corporation  
Cognitive Sciences Laboratory  
Menlo Park, California

*30 March 1993*



**SAIC**

Approved For Release 2000/08/08 : CIA-RDP96-00789R003000350001-0

This document is made available through the declassification efforts  
and research of John Greenewald, Jr., creator of:

# The Black Vault



The Black Vault is the largest online Freedom of Information Act (FOIA)  
document clearinghouse in the world. The research efforts here are  
responsible for the declassification of hundreds of thousands of pages  
released by the U.S. Government & Military.

**Discover the Truth** at: <http://www.theblackvault.com>

## BRIEFING OBJECTIVE

- PROVIDE RETROSPECTIVE VIEW OF EVIDENCE FOR PROOF-OF-PRINCIPLE
- PROVIDE DETAILED PROTOCOL FOR REPLICATION

**SATC**

## BRIEFING OUTLINE — I

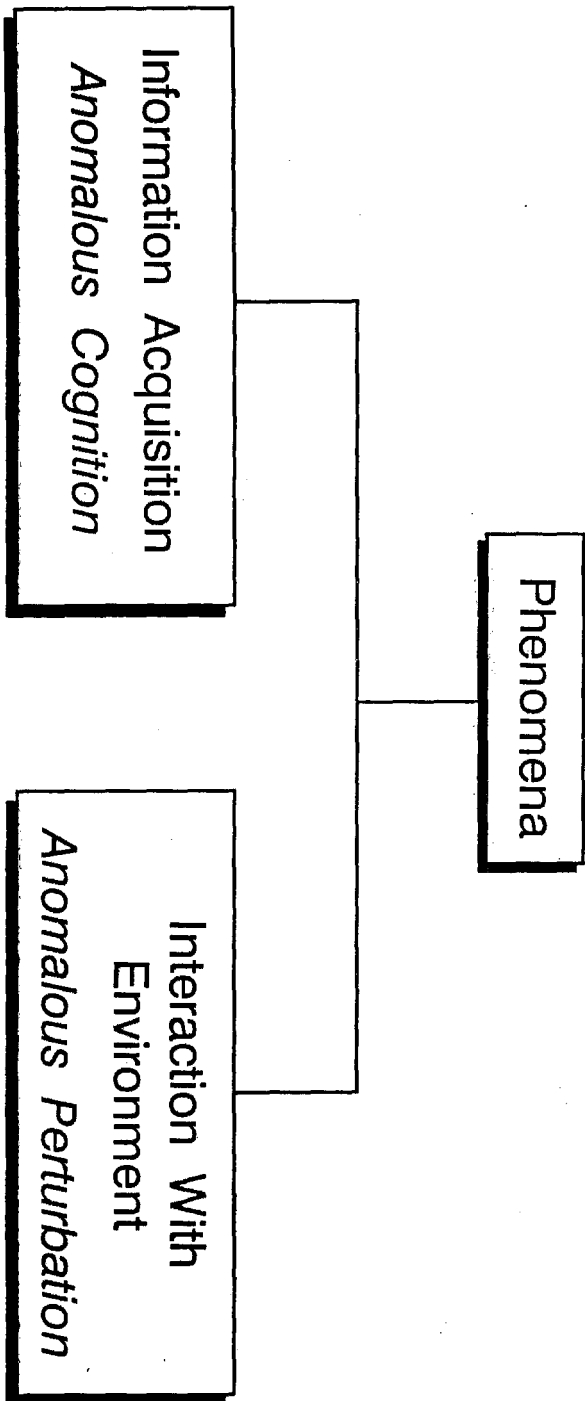
- DEFINITION OF TERMS
- SCHEMATIC PROTOCOL FOR A SINGLE TRIAL
  - Three Examples of Data
- ANALYSIS
  - Rank-order Tests
  - Fuzzy Sets
- RETROSPECTIVE VIEW
  - Statistical Criteria
  - Literature Reviews

**SAIC**

## BRIEFING OUTLINE — II

- REQUIREMENTS FOR REPLICATION
  - Power Analysis
  - Personnel Selection
  - Target Pool Selection
  - Trial Protocol
  - Analysis/Control
  - Criteria for "Success"
  - Estimated Person-Hours

# ANOMALOUS MENTAL PHENOMENA



## ANOMALOUS COGNITION — A DEFINITION

- ANOMALOUS COGNITION. A form of information transfer in which all known sensorial stimuli are absent. That is, some individuals are able to gain access, by an as yet unknown process, to information that is not available to the known sensorial channels.

**SAIC**<sup>®</sup>

## RESEARCH MATERIALS — SINGLE TRIAL

- TARGET
  - Outdoor Scene (e.g., Golden Gate Bridge)
  - Photographs (e.g., Paris)
  - Physical Object (e.g., Feather)
  - Geometric Shape (e.g., Star)
  - Symbol (e.g., 7, H)
- RESPONSE
  - Written/Drawn
  - Audio/Video Tape
- ANALYSIS
  - Fuzzy Sets
  - Rank Order

**SAIC**<sup>®</sup>

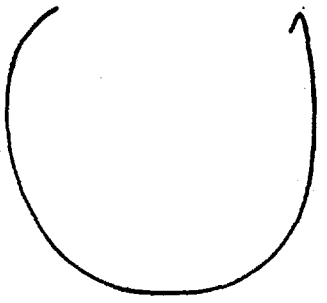


## SINGLE-TRIAL SESSION PROTOCOL (Schematic)

TIME	EVENT
10:00	Monitor and Receiver are Sequestered
10:05	Assistant <u>Randomly</u> Selects One Photograph From a Set of 100
10:10	Session Begins
10:25	Session Ends
10:30	Raw Data is Copied and Secured: Target is Obtained
10:35	Response and Intended Target are Discussed with Receiver

NOVICE RECEIVER (R177) — RESPONSE

Targets



- Shaded  
- smooth / rounded

break

Targets

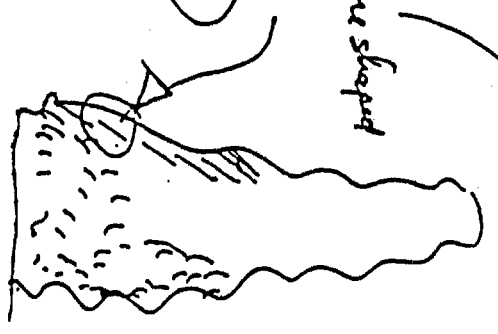


- tall cone shaped

- fuzzy

- tree

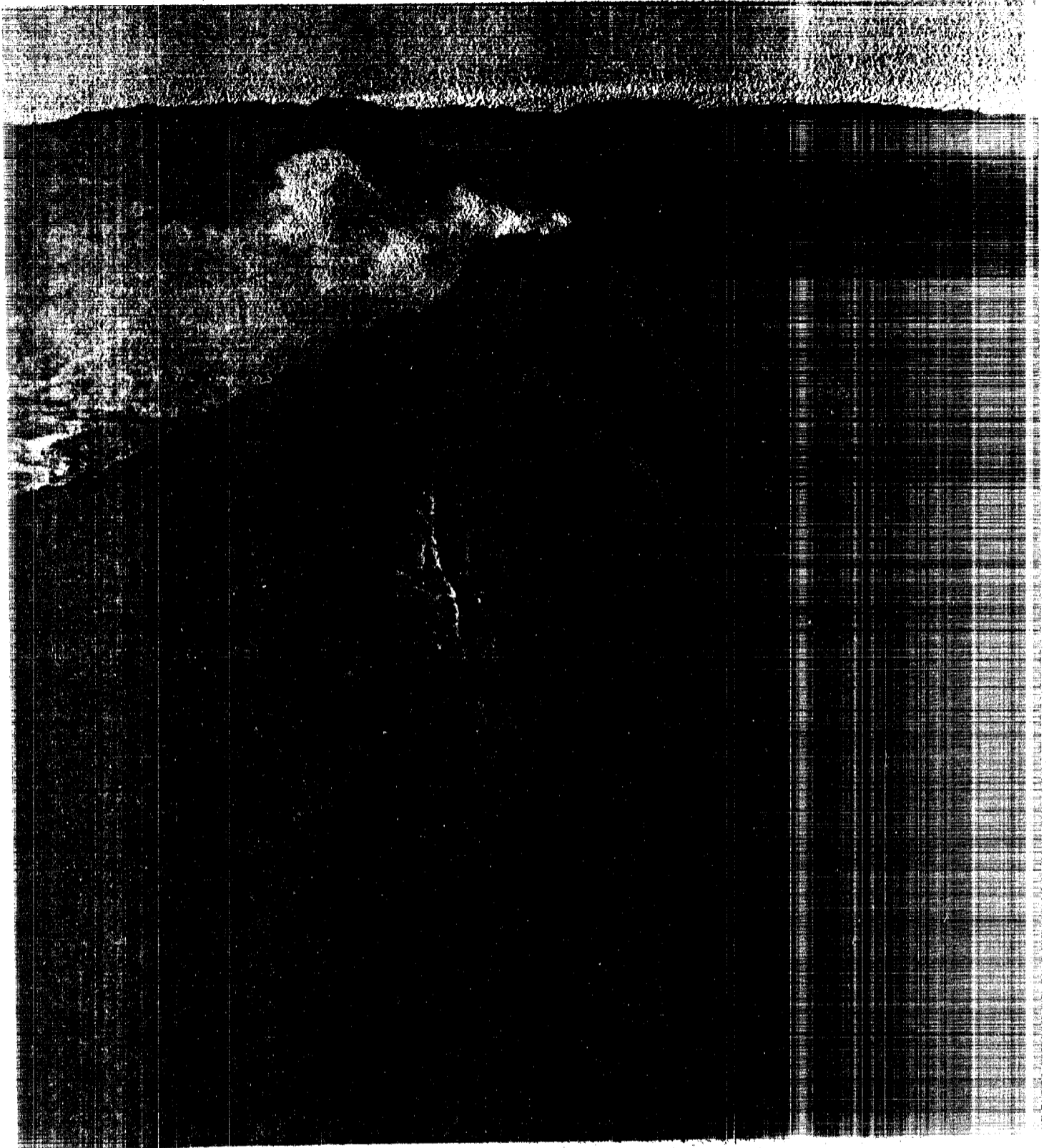
break



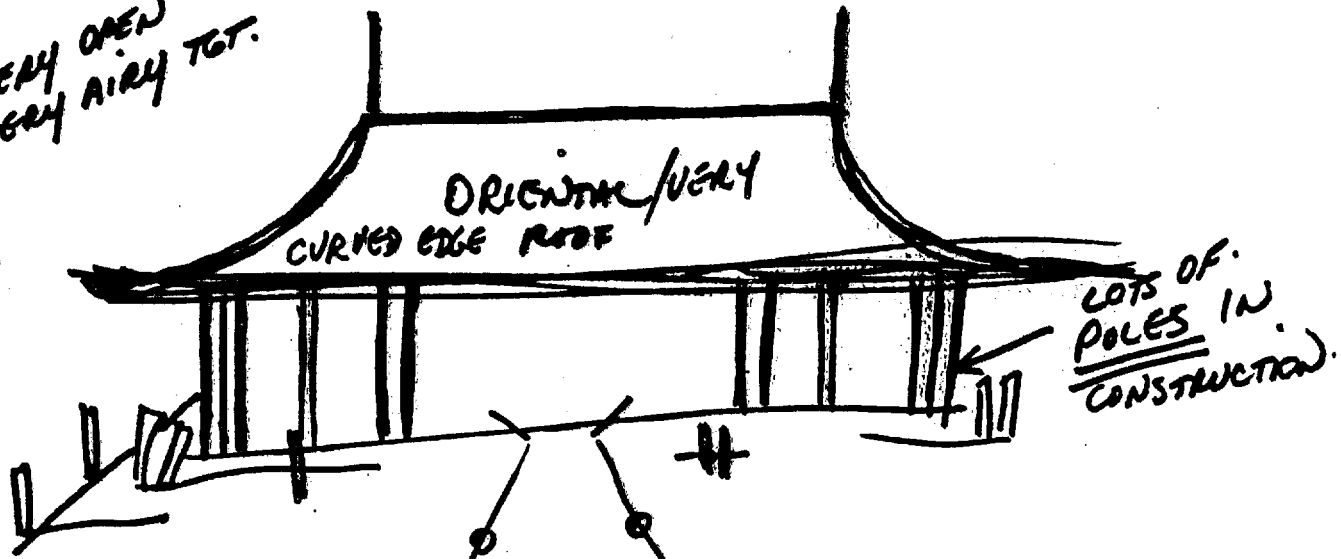
bulge and down  
@ broader than  
bottom

end of session





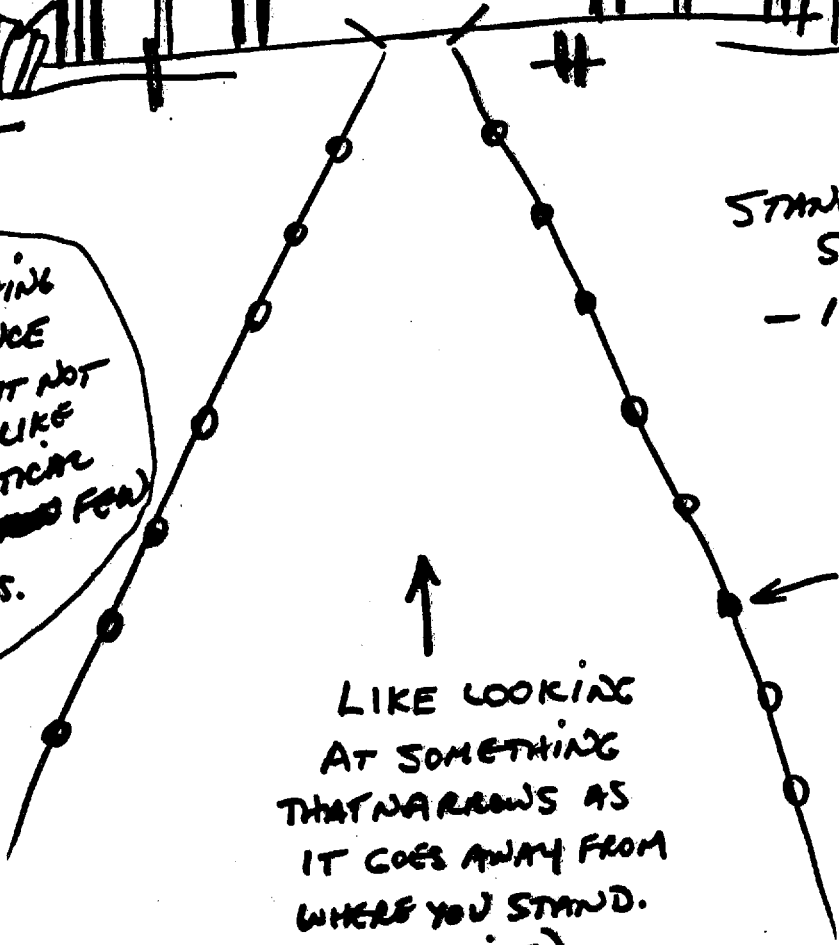
VERY OPEN  
VERY AIRY TGT.



LOTS OF POLES IN CONSTRUCTION

NOTE: SOMETHING LIKE A FENCE PRESENT BUT NOT A FENCE - LIKE ROWS OF VERTICAL LINES W/ A FEW HORIZONTALS.

STAND ALONG STRUCTURE - ISOLATED.



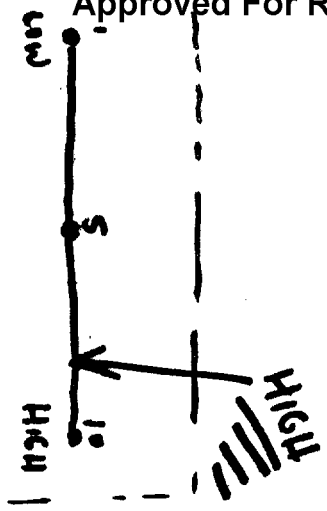
LIKE LOOKING AT SOMETHING THAT NARROWS AS IT GOES AWAY FROM WHERE YOU STAND. (PERSPECTIVE)

SOME KIND OF ROUND OBJECTS BOTH SIDES.

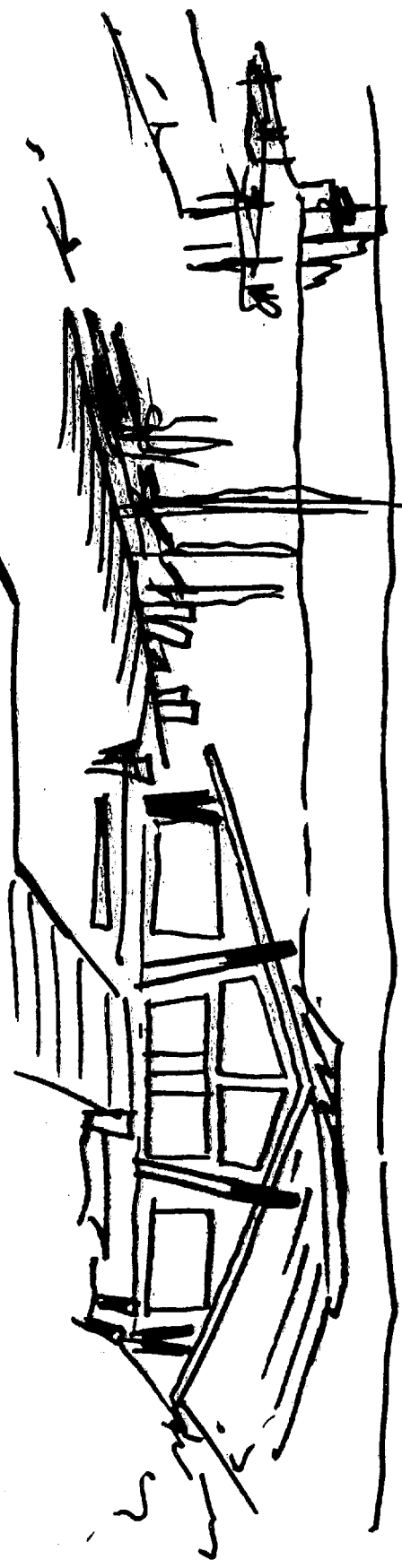
FLAT WATER - NATURAL WATER AT SITE. LOCATED AT EDGE OF WATER.

- QUIET
- SOLITUDE
- SET ASIDE
- EITHER SIDE (AOL)
- TALLER OBJECTS IN BACKGROUND.





PARKING



- SINGLE STRUCTURE - BLDG.
- DARK BRUSHES.
- NEXT TO EDGE OF WATER
- BOATS
- LARGE PARKING AREA.



# RANK-ORDER ANALYSIS OF A SINGLE AC RESPONSE

- THE TARGET WAS SELECTED *RANDOMLY* FROM 100
  - 20 Packs of 5 Targets Each — Pack Chosen First
  - Given the Pack, the Target is Randomly Chosen
    - This particular pack contains the target and 4 non-targets (Decoys).
  
- ANALYST'S TASK
  - Rank-order the 5 Photographs in the pack from the Best to the Worst Match to the Given Response

Original Order			Rank Order Match Number		
Target	1	Response	Target	3	1st Place
Target	2		Target	4	2nd Place
Target	3		Target	2	3rd Place
Target	4		Target	1	4th Place
Target	5		Target	5	5th Place





## FUZZY SET ANALYSIS OF A SINGLE AC RESPONSE

- 100 TARGETS PREVIOUSLY CODED AS FUZZY SETS OF VISUAL ELEMENTS
  - Intended Target is Selected Randomly
- RESPONSE IS CODED AGAINST THE SAME UNIVERSAL SET
- COMPUTATIONS (i.e., Normalized Fuzzy Intersections)
  - Accuracy: The Percent of the Target which is Described Correctly
  - Reliability: The Percent of the Response which is Correct
  - Figure-of-Merit (FM): Accuracy  $\times$  Reliability
- FMs ARE COMPUTED FOR ALL 100 TARGETS AND ORDERED
- PROBABILITY VALUES ARE DETERMINED BY LOCATION OF THE INTENDED TARGET'S FM IN THE LIST

**SAIC**<sup>®</sup>

## RETROSPECTIVE: STATISTICAL CRITERIA — I

- CONSIDER THE FOLLOWING TWO EXPERIMENTS

- Coin Flips(1):  $n=500$ , Heads= $275$

$$Z = \frac{2 \left( \text{Heads} - \frac{n}{2} \right)}{\sqrt{n}} = 2.24, p \leq 0.01$$

- Coin Flips(2):  $n=250$ , Heads= $138$

$$Z = 1.58, p \leq 0.06$$

- COMBINED RESULTS

- $n=750$ , Heads= $413$

$$Z = 2.78, p \leq 0.003$$

The logo for SAIC (Science and Applications, Inc.) is located in the bottom right corner. It features the letters "SAIC" in a bold, italicized, sans-serif font, with horizontal lines extending from the right side of the letters.

## RETROSPECTIVE: STATISTICAL CRITERIA — II

- EFFECT SIZE (ES)

- Coin Flips(1):  $n=500$ , Heads=275,  $Z=2.24$ ,  $p \leq 0.01$

$$ES = \frac{Z}{\sqrt{n}} = 0.10$$

- Coin Flips(2):  $n=250$ , Heads=138,  $Z=1.58$ ,  $p \leq 0.06$

$$ES = 0.10$$

- Combined Results:  $n=750$ , Heads=413,  $Z=2.78$ ,  $p \leq 0.003$

$$ES = 0.10$$

**SAIC**

## LITERATURE REVIEWS (META-ANALYSIS)

- ANOMALOUS COGNITION — COMPLEX TARGETS
  - H. E. Puthoff and R. Targ, *Proceedings of the IEEE*, 1976
    - $n=39$ ,  $ES=1.13\pm 0.16$ ,  $Z=7.06$ ,  $p \leq 8.5 \times 10^{-13}$
  - I. L. Child, *American Psychologist*, 1985
    - $n=83$ ,  $ES=0.51\pm 0.11$ ,  $Z=4.61$ ,  $p \leq 2.0 \times 10^{-6}$
  - D. J. Bem and C. Honorton, *Psychological Bulletin*, 1993  
J. M. Utts, *Statistical Sciences*, 1991
    - $n=355$ ,  $ES=0.20\pm 0.05$ ,  $Z=3.73$ ,  $p \leq 9.6 \times 10^{-5}$
- ANOMALOUS COGNITION — SYMBOL TARGETS
  - C. Honorton and D. C. Ferrari, *Journal of Parapsychology*, 1989
    - $n \approx 2 \times 10^6$ ,  $ES=0.020\pm 0.002$ ,  $Z=10$ ,  $p \leq 8 \times 10^{-24}$

**SAIC**