

P.Ls - none

SG1J



Approved For Release 2000/08/08 : CIA-RDP96-00789R003400100002-2

78 FEB 88

0841HRS - 0954HRS

773001
248403

S-2

D

AI

EI

T

I

AOL

A/S

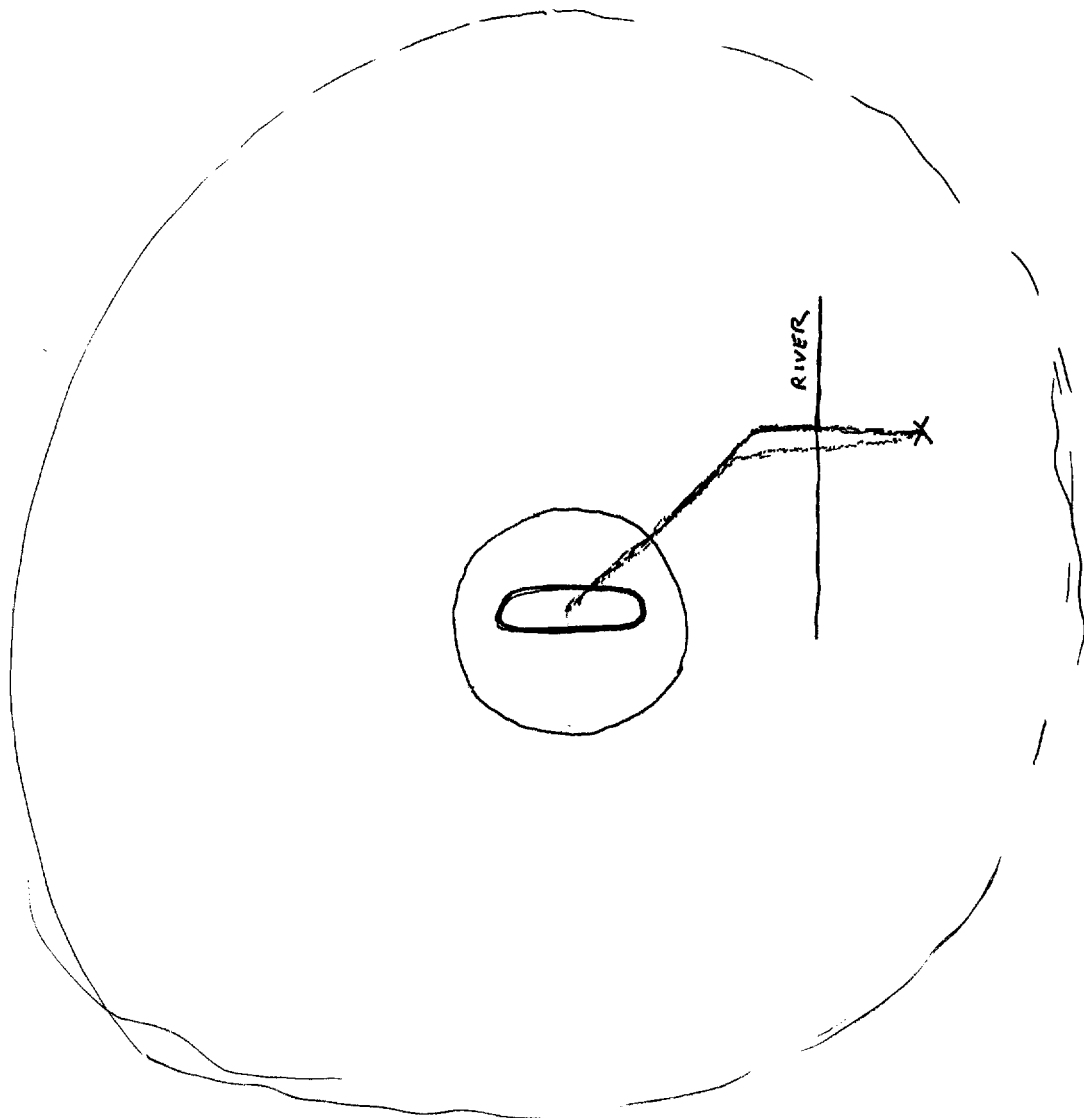
This document is made available through the declassification efforts
and research of John Greenewald, Jr., creator of:

The Black Vault



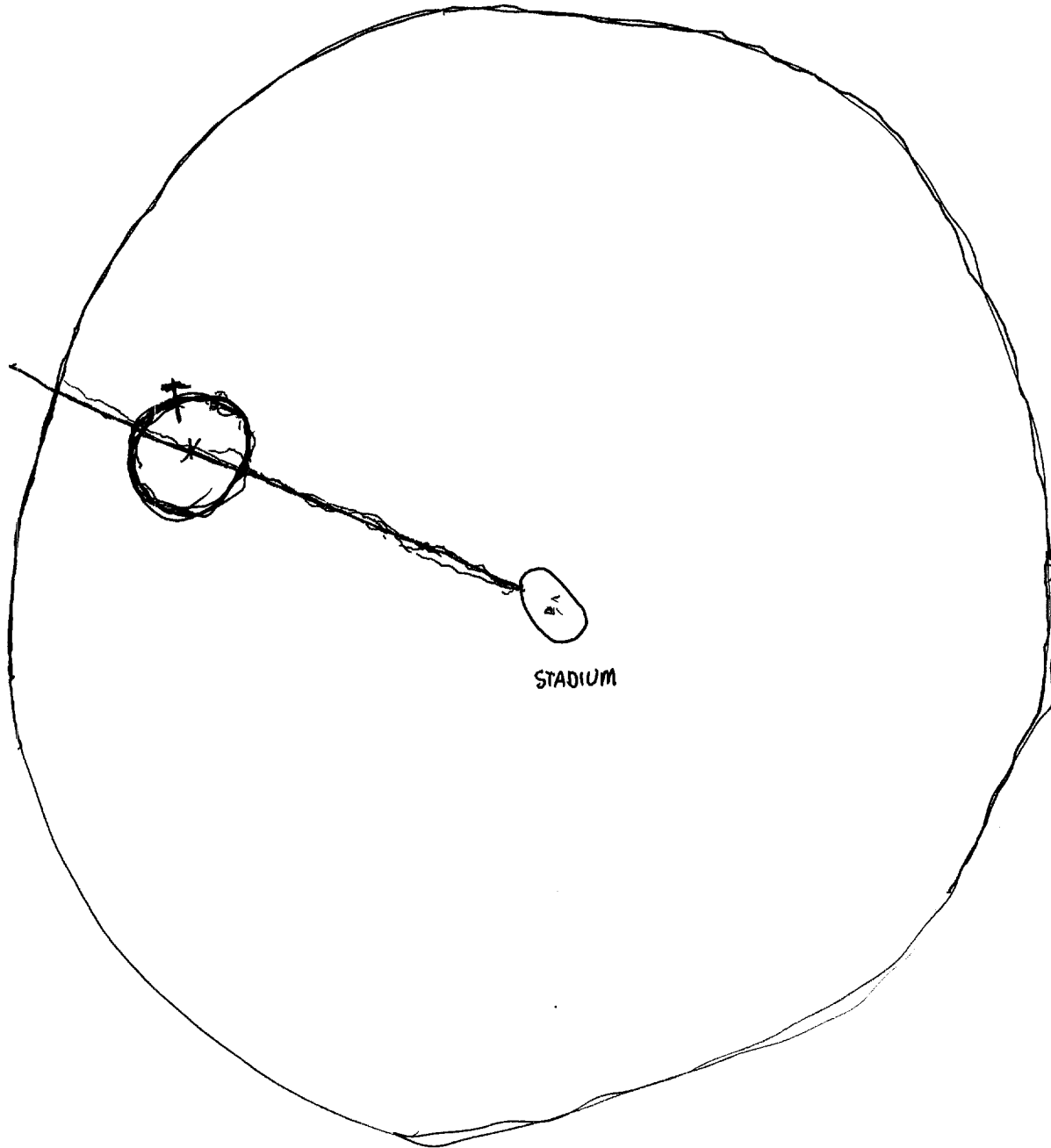
The Black Vault is the largest online Freedom of Information Act (FOIA)
document clearinghouse in the world. The research efforts here are
responsible for the declassification of hundreds of thousands of pages
released by the U.S. Government & Military.

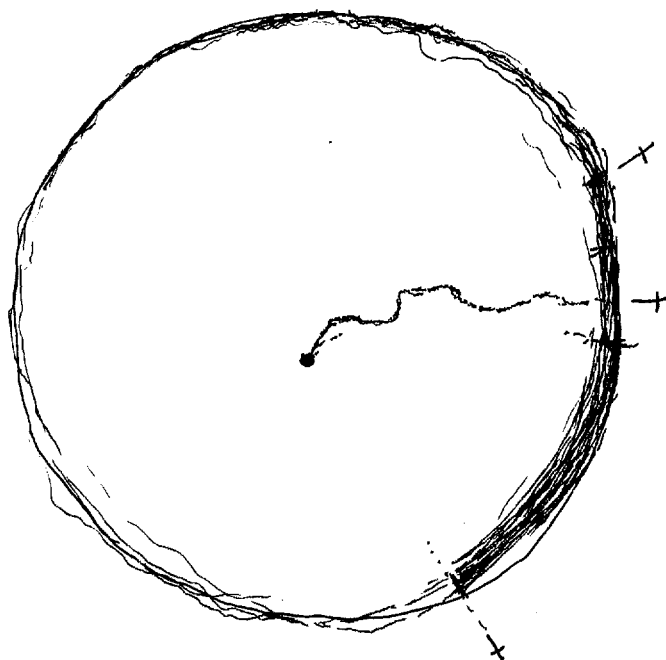
Discover the Truth at: <http://www.theblackvault.com>



— get the feeling there is a church of
 some kind nearby. There is also a
 railroad track in the vicinity.

The church is closer to his location
 than the rail line. I'm not sure if you can
 see the rail line from his location, but you
 can hear the trains.





S-2

D

AI

EI

T

I

AOL

A/S

WHITE
CREAM
GREY
hard
rough

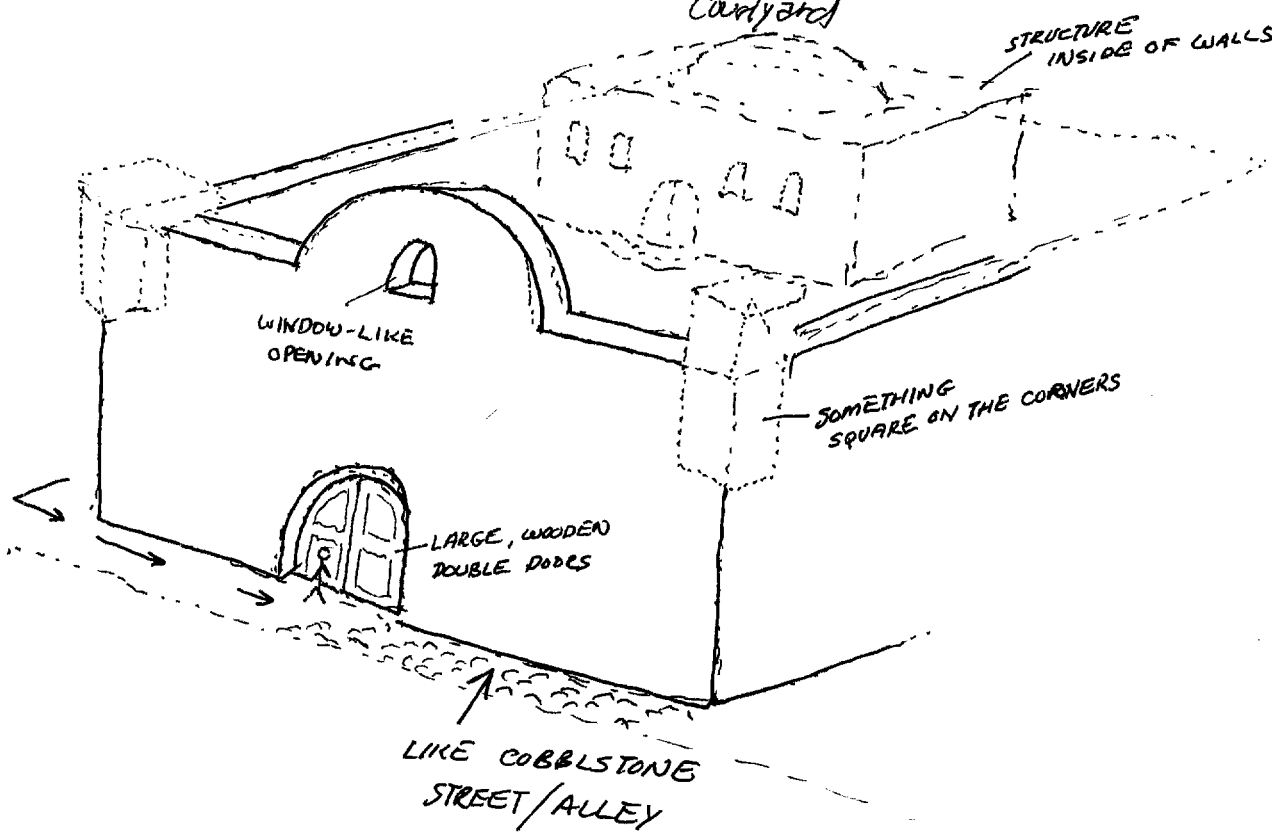
CHURCH-BI-LOCATE!

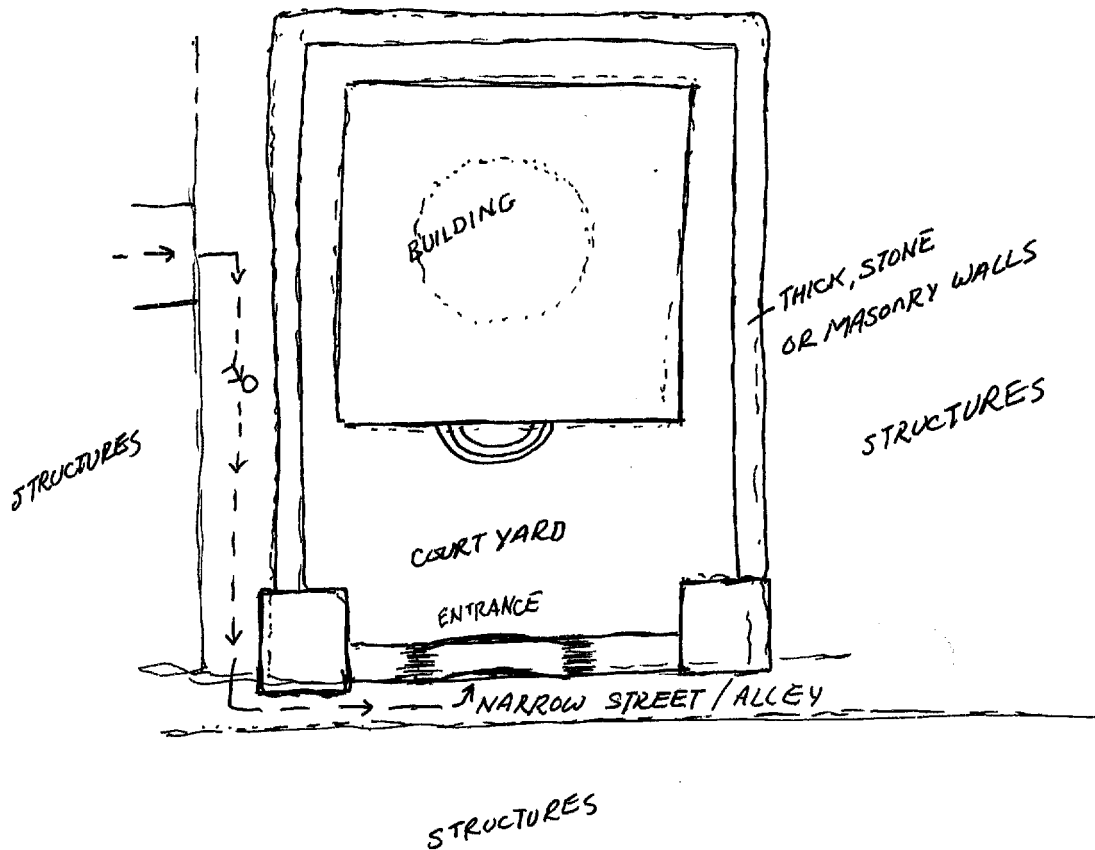
vertical
angles
curving

stone
plaster
old feeling

walks
courtyard

STRUCTURE
INSIDE OF WALLS





OVERHEAD VIEW

This complex is very old. It is constructed like a small fortress. It may have stood all by itself at one time in the past, however it is now surrounded by structures that obscure it from view at the ground level.