

Paul
28 March 88
Ft. Meade
MD
lyn
1324

913 801
893 723

~ □ ~
A. across
flat

road
B. low

A. road
road
solid

B. scrub,

A. across
hpt + down
solid

B. object

52
grey
white
road
low
red
brown
yellow
blue
Sweet's
low
low
brown

This document is made available through the declassification efforts
and research of John Greenewald, Jr., creator of:

The Black Vault

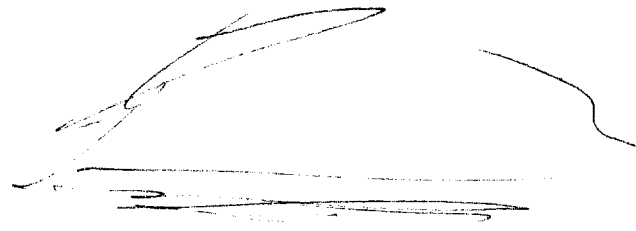


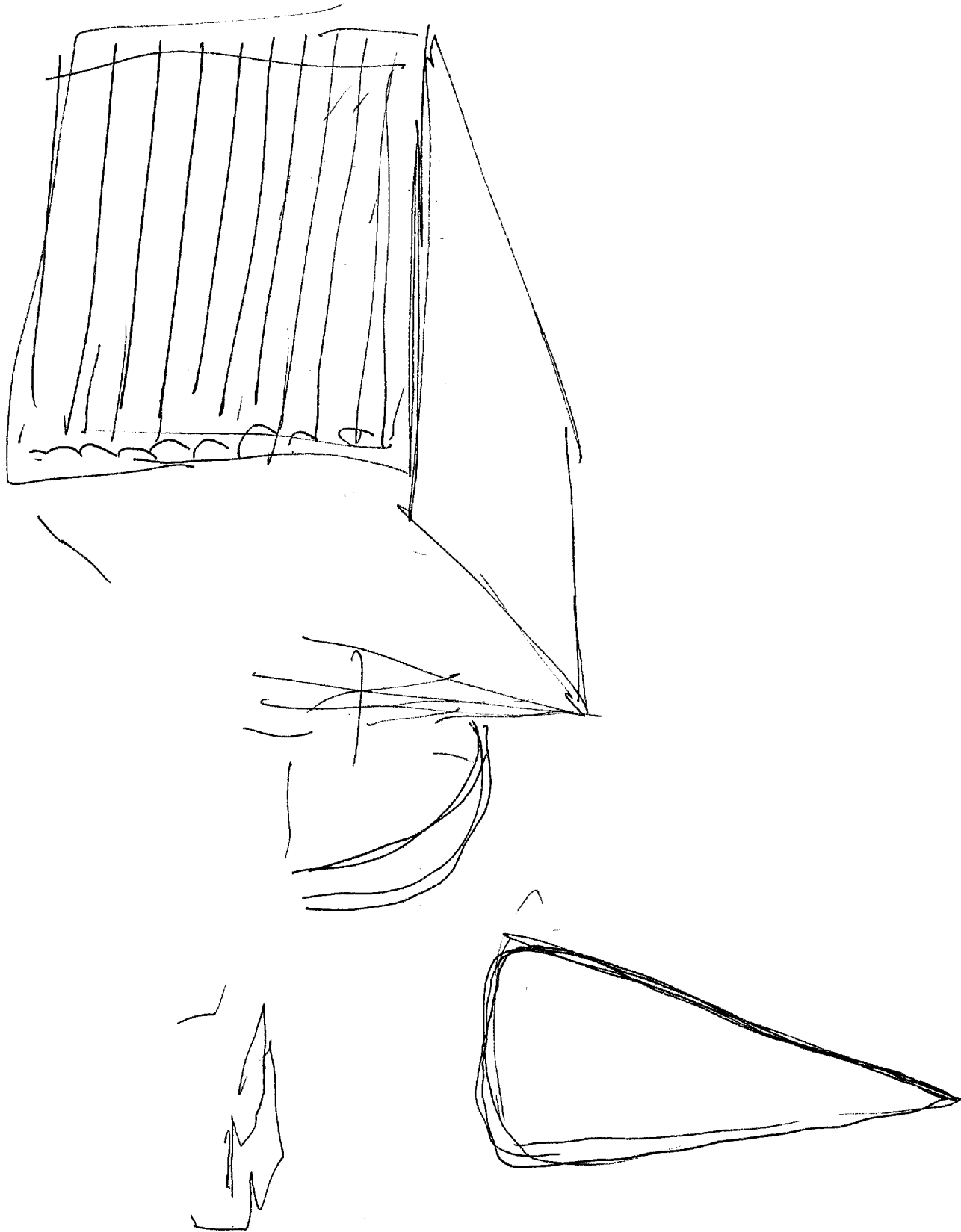
The Black Vault is the largest online Freedom of Information Act (FOIA) document clearinghouse in the world. The research efforts here are responsible for the declassification of hundreds of thousands of pages released by the U.S. Government & Military.

Discover the Truth at: <http://www.theblackvault.com>

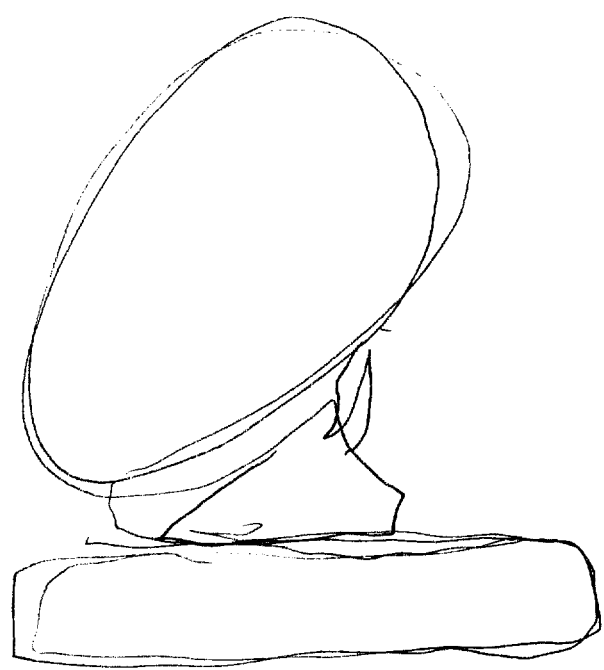
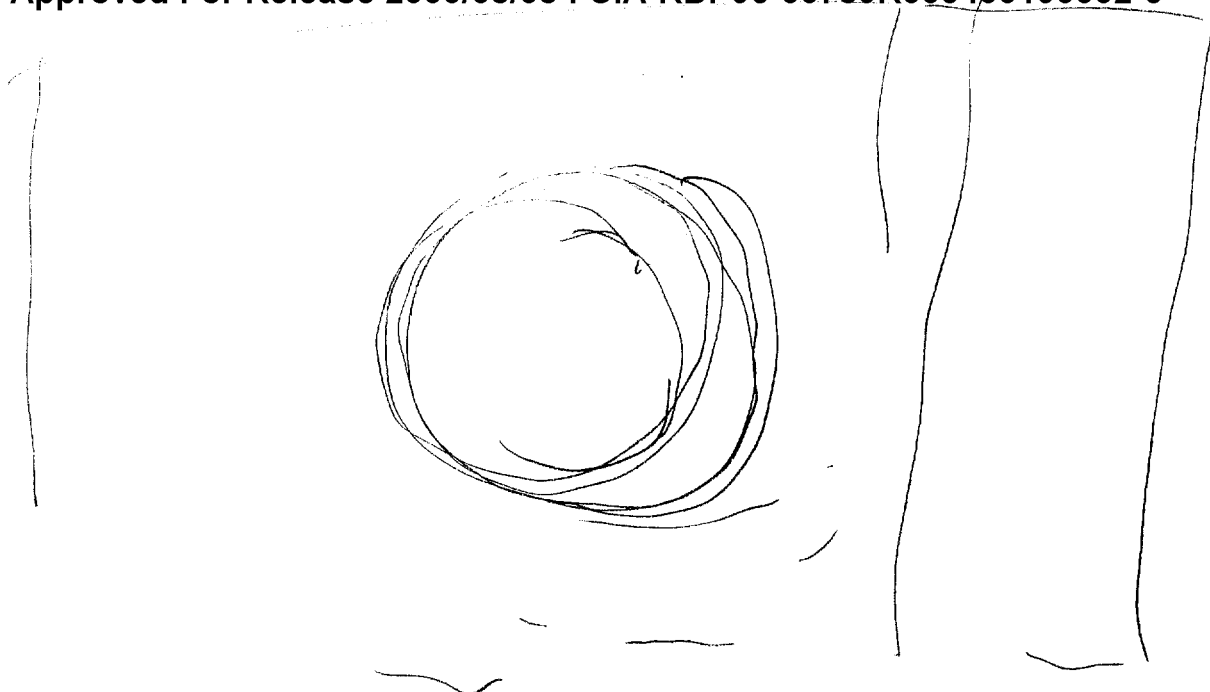
cray
bumpy
troubles
around
work
sides
large
control
flag
open

A2 BK
sometimes compelled
interests about
this place





#1 bk Ch. 6



52
green
shiny
hard
smooth
glossy

rounded
disked

object

inside
moving
noncorrosive

metallic

lighted

electronic

"like"
table
dble

rotating
as
up + down

Outsize

Structure

large
cuboid
to
rectangular

S2

D

H2

E2

T

I

H2

H5

lined

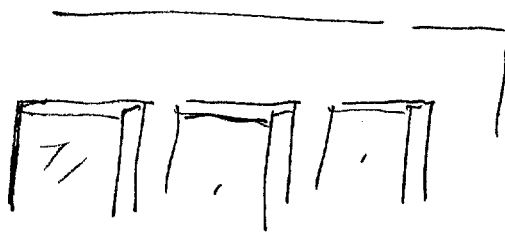
bumpy

corrugated
tall
with
affixed
attached

Structure

"like"
envelope

irregular
shaped
regular
indented



"like"
box
door

grey
5 master
~~paper~~ taped
positives
rounded

flat
shiny

FOL ALS

long



heavy
cradled
movable
up + down

Sub's "like" item is maintained or stored or deflected
horizontally, but is so provided that it may be moved
vertically to a certain degree required or desired, pivots
on one end

"like"
w/ke-
Hender
Lumber

Sub's it you knock on this it sounds solid. Parts - part
together of several segments.

back +
forth
motion

ALS like some thing working or tilting back + forth rhythmically,
precisely, rapidly, + very regularly.



chord
flipped
gyrational

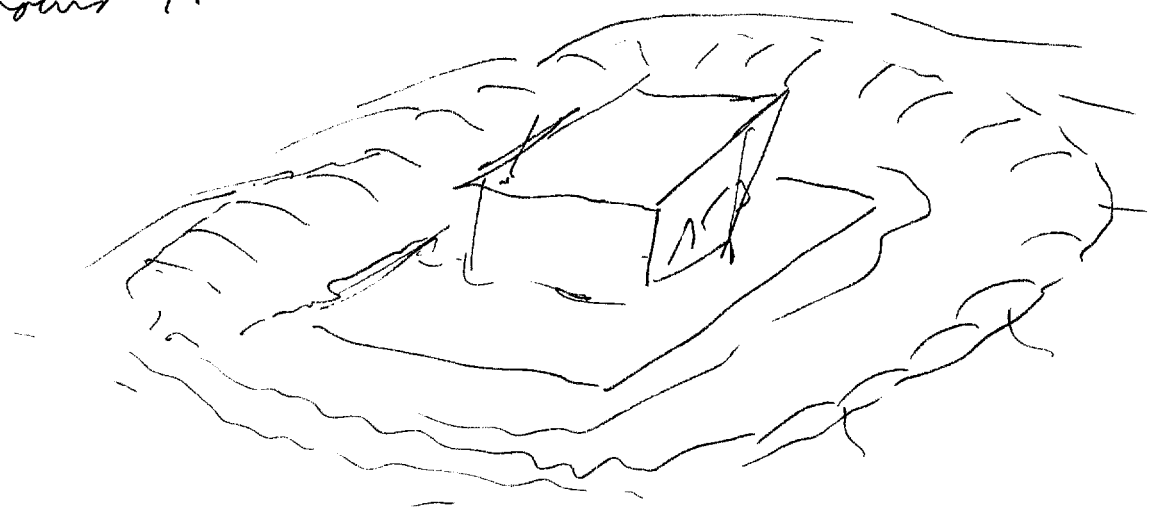
S. 2

8
MS

Extension

Cement
apron

Sndz all around large structure is cement flat "apron"
for support & access & security. Structure seems to
be in a depressed feature. like hills ~ beams
raised around it



Perimeter
of side of
5m at
Castroville.

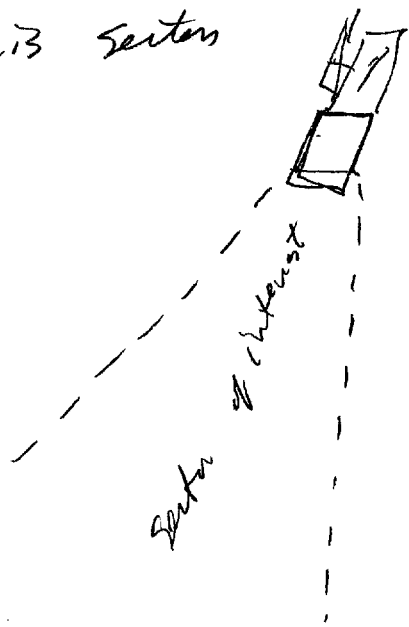
Sndz Other associated miscellaneous structures nearby
vertical complex cylindrical concrete vegetable

"pile"
standing
at an oil-
refinery

Official
government
quasi-military feel
technical

Director
oriented

Sel^{1/2} - like it has a sector-of-interest & is oriented
to best address this sector



Sel² not heavily people oriented. - People are present in
sufficient numbers to operate, but purpose is not directly
related to people-support. People are here for the sake
of the site, rather than vice-versa. Sense of standards
& waiting, preparation, protocol, ~~discipline~~, alertness,
things don't happen here until directed by "higher-ups" who
are in charge & responsible. People here are "Indians." Sense
of non-U.S.

A/S
Soviet
Union

ALS Impression of this as being missile/rocket related.
inside

Other
Objects

Spacious

equipment

determine
diagnostic

"like a
garage"

umbilical

umbilical

movable

reusable
monitors
"winding up"
supply is

power

instructions

ALS image of a gyroscope being rapidly spun up from
outside source.

People

Get 2 people present whose duty is primarily to safe guard, over watch,
act as safety mechanism - like human fusible link

52
A2 PJ I AUL Hs

sub heavy movement machinery "like" traveling cranes - used only rarely, but absolutely essential at those times when truly needed. Reminds me mind of a huge machine shop, or very closely - kept industrial plant operation.

red line given

sub pleasantly, ^{cool} smooth, glossing curving surfaces.

fl Bk
nice +
pleasant to
run hands
over

sub size of curved, rounded object relative to person is a couple of times larger in one dimension, but many times larger in another.

very high
ceilings
inside
structure

fl Bk
very tall inside

sub ceilings - mostly light colored and flat with some large pieces of machinery secured underneath + hanging

perimeters of inside of structure near top.

S U J

12

52

D
rear end

A2

E I

T

I

Jul

Als

Structures

low

high

different
shapes

flat
roofed

circular
rounded

gender's
down

hol Blk
87-17

other end

open

|

bank
gate
dirt

open

"the"
field
provides
area

frees

few
structures

A) Blk
unmarked
feels

52

582 sense of unbalance or unwholeness about being in open area, which is perhaps why it's "vestibled"

"Lites"
"field of fire"

5412
inside
structure
from forward

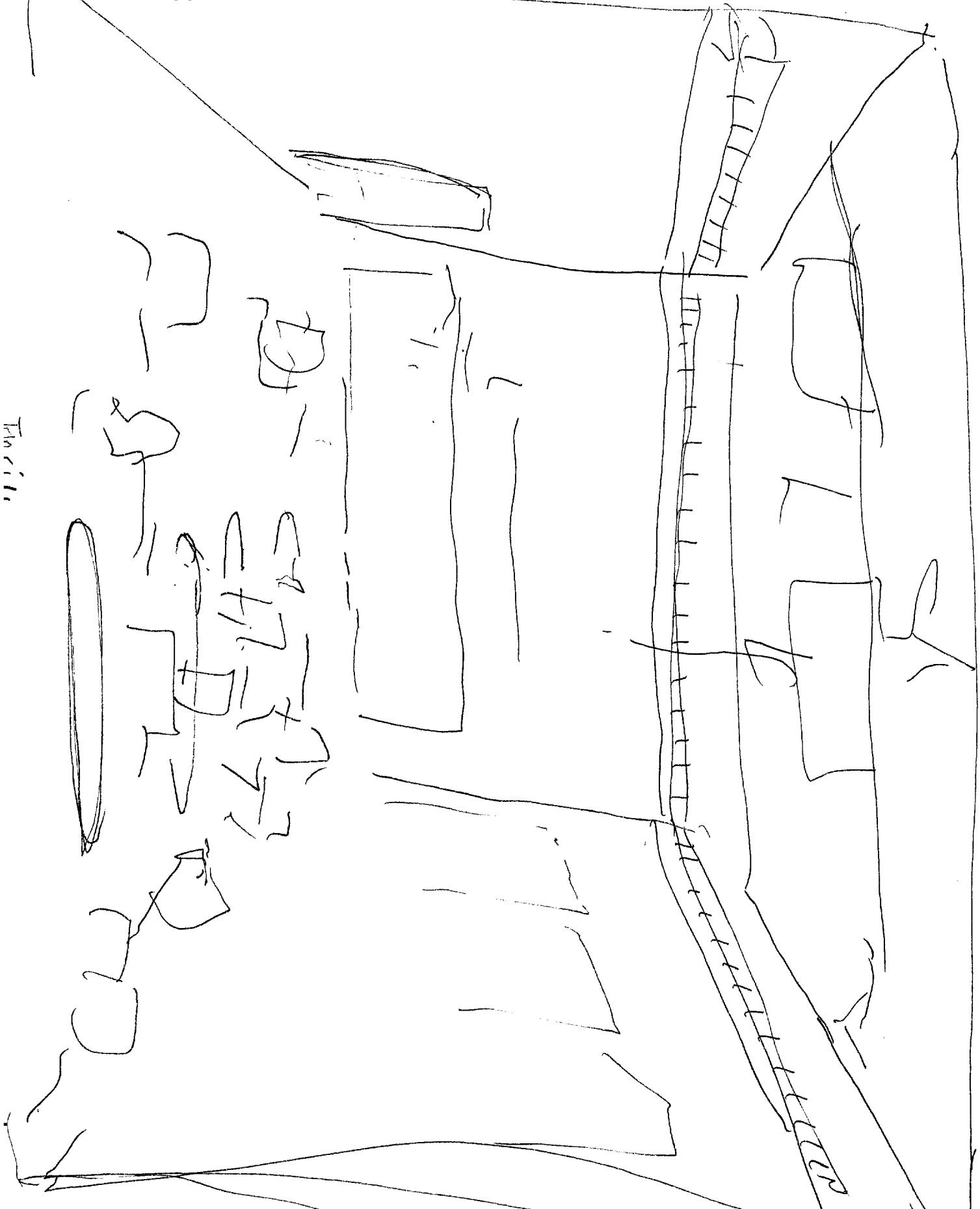
large open bay filled w/ various shapes, dimensions & types of machines, equipment & paraphernalia. But several of one kind of object that seems long smooth, rounded & pointed. Objects are light colored than rest & impression of motor vehicle inside like truck & tractors. feeling there's four objects - but maybe six.

glatt = smooth, shiny, glossy, slick -

light colors

off-white, pinkish, greenish

1411



Interior

top