

~~157D~~

20 Feb 90

WORKING PAPER

Reply to
Attn of: DIA (DT-S)

SUBJECT: SUN STREAK Project 9003-II (U)

TO: HQDA
ATTN: DAMI-IO

SG1A

1. (U) Reference Memorandum, DT-S, Subject: Project 9003, and dated 8 Feb 90.

2. (S/STD) The following is submitted as a corollary to reference Para 1, and describes the target vessel identified as [redacted] and the contraband in the form of illegal drugs believed to be aboard ship.

a. (S/STD) The vessel was described as a grey, metal, motorized vessel with cranes. It was additionally defined as a working vessel.

b. (S/STD) There appeared to be two types of illegal contraband aboard ship in the form of drugs. One type was simply described as strong while the second was believed to be mild.

c. (S/STD) The illegal contraband seemed to be stored amidship, specifically, slightly forward of amidship and to the port side. The drugs were stored in plastic bags. No extraordinary measures appears to have been taken to conceal the presence of the drugs.

3. (U) Related sketches in the form of conceptual representations, are at TAB A through TAB D inclusively.

SG1J

[redacted]

Branch Chief

Phase II

ENCLOSURES
Tab A thru D

*Classified by HQDA (DAMI-10)
Declass: OADR*

~~157D~~

This document is made available through the declassification efforts
and research of John Greenewald, Jr., creator of:

The Black Vault



The Black Vault is the largest online Freedom of Information Act (FOIA)
document clearinghouse in the world. The research efforts here are
responsible for the declassification of hundreds of thousands of pages
released by the U.S. Government & Military.

Discover the Truth at: <http://www.theblackvault.com>

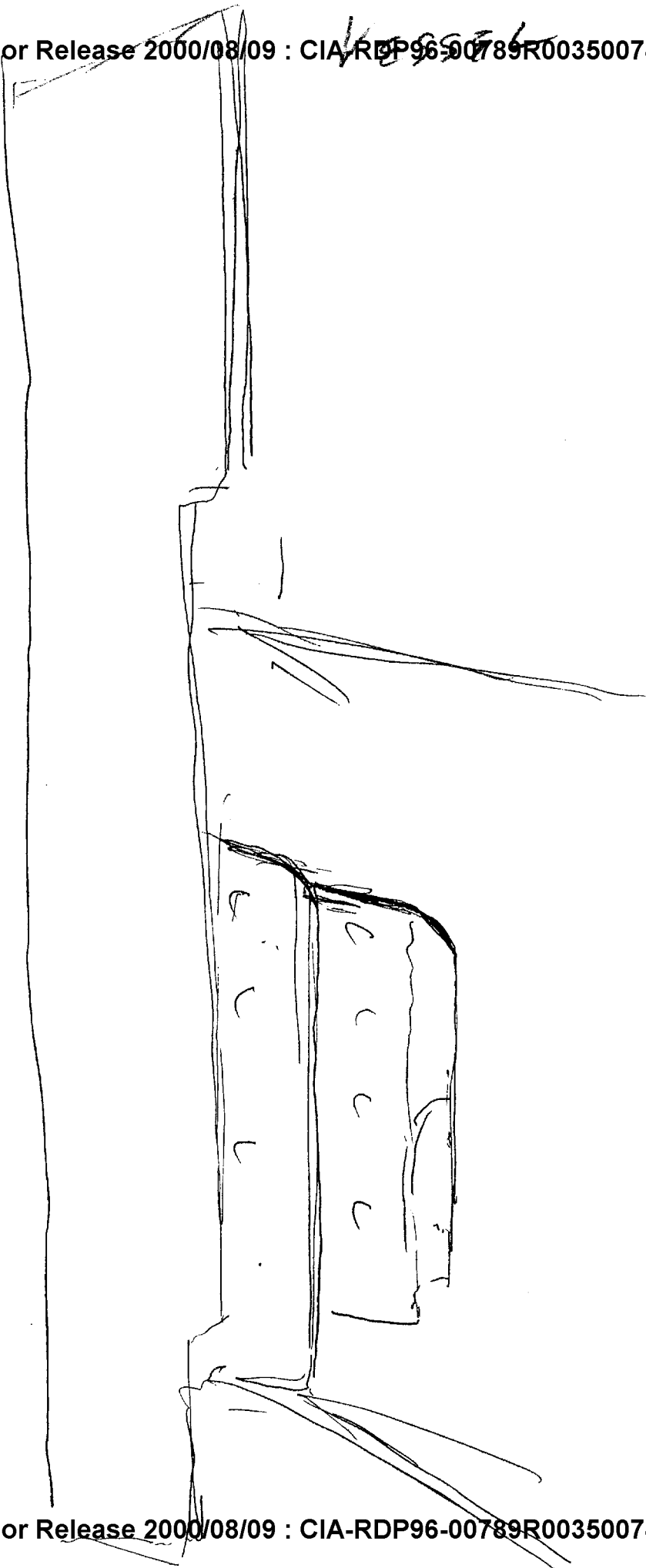
66

R. 4003-IT

D. 400209

V: 003

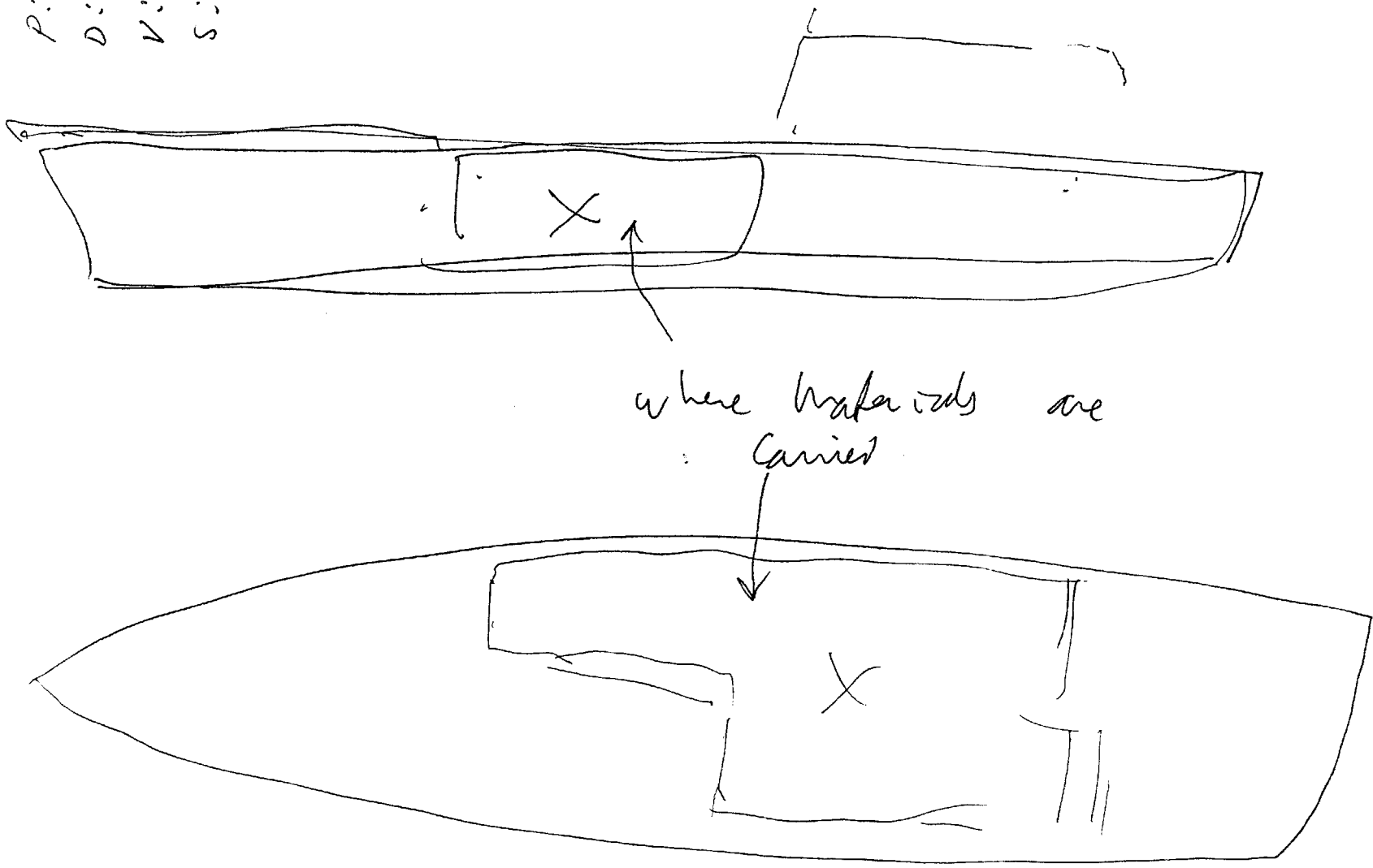
S: 02



TAB A

P: 9003-IT
D: 900209
V: 003
S: 02

LOCATION OF DRUGS



where materials are
carried

may not occupy entire volume available,
but dispersed in "lots" throughout.
Indicate source of drugs as well as quantity.

TAB B

~~SECRET~~
WORKING PAPER

P 9003 - ~~U~~

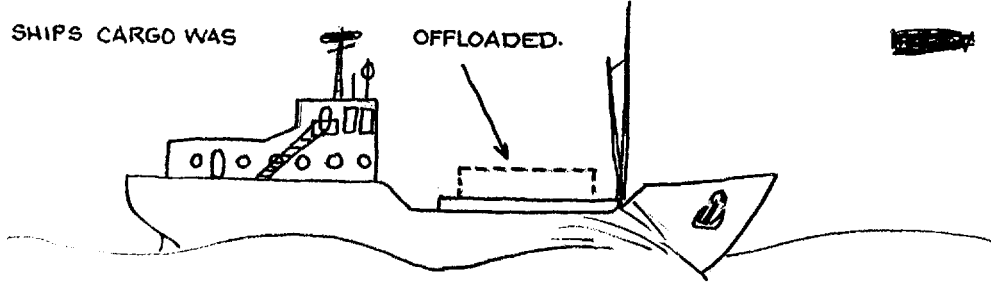
D 900215

V 011

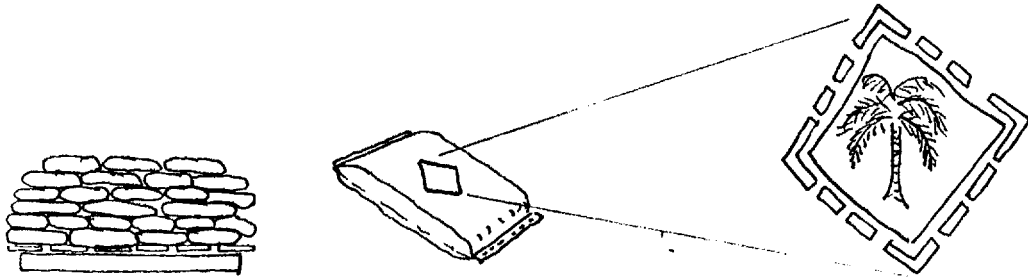
S 01

~~SECRET~~

A RECTANGULAR, TARP-COVERED OBJECT SITTING ON TOP OF CARGO HOLD. THIS OBJECT WAS NOT PRESENT WHEN SHIP'S CARGO WAS OFFLOADED.



SMALL VESSEL WITH ONE FORWARD BOOM.



CARGO IN THE HOLD CONSISTS OF WOODEN PALLETS WITH STACKS OF BAGS CONTAINING A POWDERY OR GRANULAR SUBSTANCE, WHICH IS NOT CONTRABAND (AOL - BAGS OF CONCRETE). THESE BAGS HAD A DIAMOND-SHAPED LABEL WITH A PALM LEAF, OR PALM TREE IN IT. THIS CARGO WAS OFF-LOADED VERY MUCH IN THE OPEN. I COULD NOT DETERMINE IF THERE MIGHT HAVE BEEN SOMETHING CONCEALED INSIDE THE BAGS.

SHIP WAS SLOWLY HEADING NORTH ALONG COASTLINE. SEAS WERE ROUGH, AND THE WIND WAS STRONG AND COLD.



~~SECRET~~

TAB C

P: 9083-IT
D: 900209
V: 018
S: 02

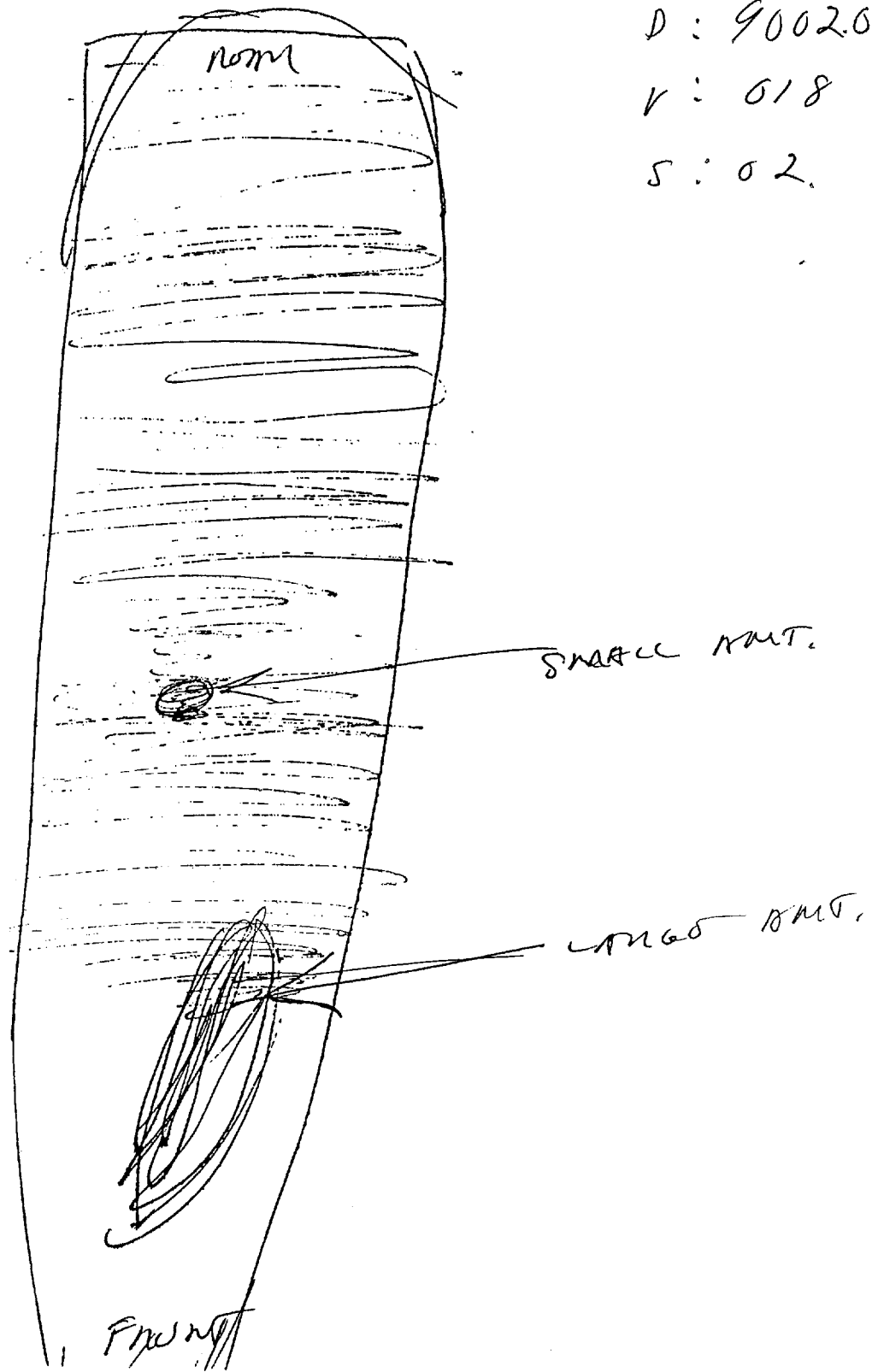


FIG. 5