

SECRET/NOFORN


PROJECT SUN STREAK

WARNING NOTICE: INTELLIGENCE SOURCES AND METHODS INVOLVED


PROJECT NUMBER: 8929                      SESSION NUMBER: 03  
DATE OF SESSION: 29 NOV 89              DATE OF REPORT: 11 DEC 89  
START: 0955                                  END: ?  
METHODOLOGY: SOLO                      VIEWER IDENTIFIER: 003

SG1A

SG1A

1. (S/NF/SK) MISSION: 

2. (S/NF/SK) VIEWER TASKING: Prod to the right left, over and under target area accessed in previous sessions.

3. (S/NF/SK) COMMENTS: No inclemencies noted. A summary of information is attached to this report. 

4. (S/NF/SK): EVALUATION:

SG1A

5. (S/NF/SK) SEARCH EVALUATION:

HANDLE VIA SKEET CHANNELS ONLY

SECRET/NOFORN

CLASSIFIED BY: DIA (DT)  
DECLASSIFY: OADR

This document is made available through the declassification efforts  
and research of John Greenewald, Jr., creator of:

# The Black Vault



The Black Vault is the largest online Freedom of Information Act (FOIA) document clearinghouse in the world. The research efforts here are responsible for the declassification of hundreds of thousands of pages released by the U.S. Government & Military.

**Discover the Truth** at: <http://www.theblackvault.com>

~~SECRET~~  
Working paper

Proj. no: 8929  
Date: 29 Nov 89  
Viewer: 003  
Session: 003?  
Monitor: Solo

Summary of Information

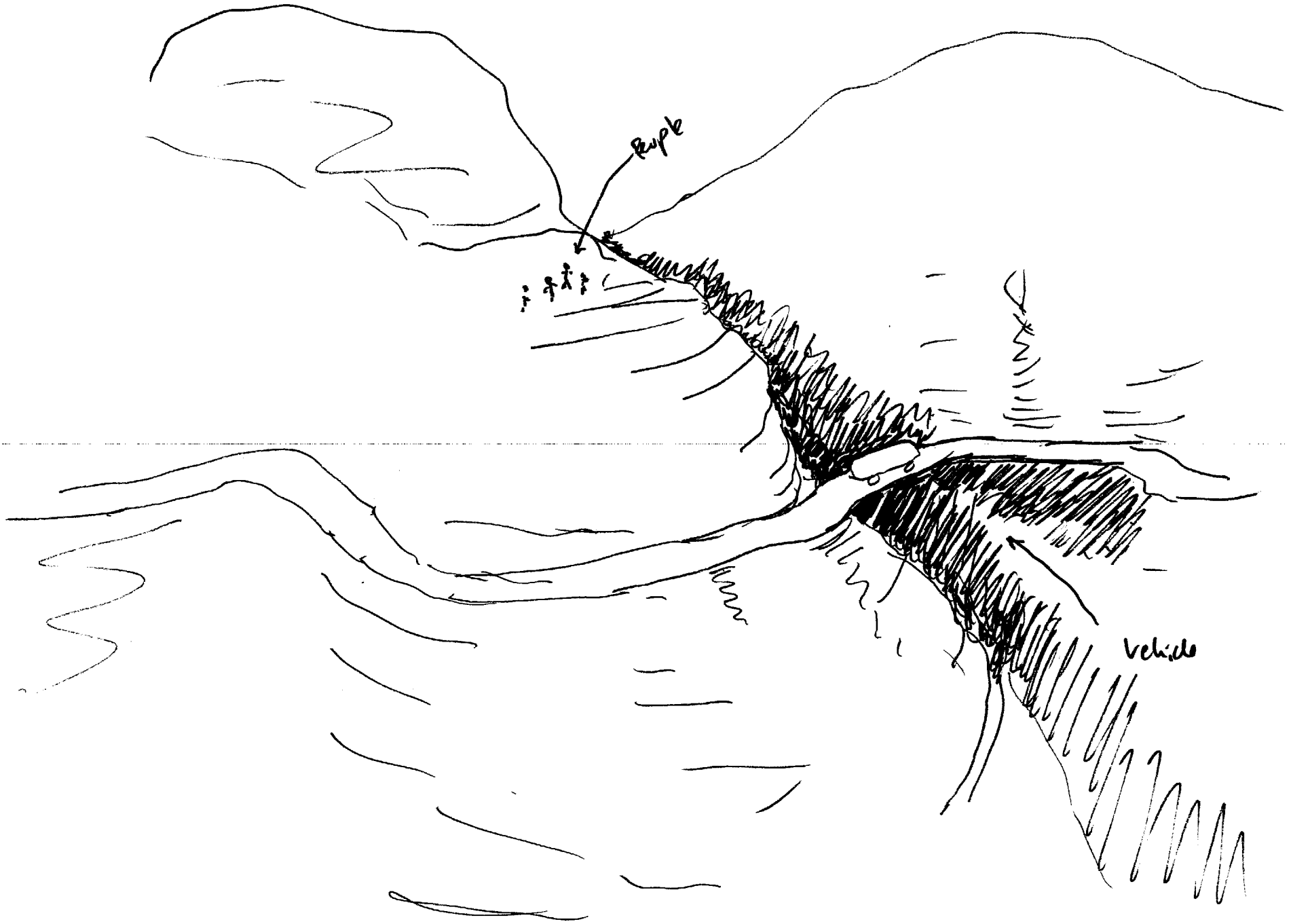
Vehicles moving along a twisty, mountainous road, with a steep bluff on one side and a steep drop off on the other. Impression of people on top of the crest of the bluff side, as well as an impression of one lone vehicle moving onto a surface on the road that is flat, metallic, non-skid, with sloping-down space under it, "like" a bridge made of PSP (perforated steel planking). There is a further impression that some sort of action is undertaken against this vehicle by a person or persons external to it, with the feeling of it being some sort of hostile act, such as firing upon it or setting off explosives.

Handle Via SKEET Channels Only

~~SECRET~~

Conceptual Sketch

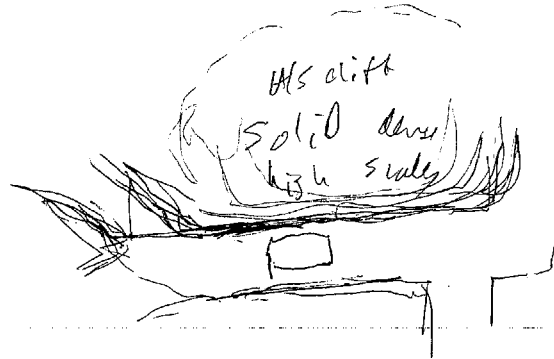
Approved For Release 2000/08/09 : CIA-RDP96-00789R003500840004-8



Approved For Release 2000/08/09 : CIA-RDP96-00789R003500840004-8

Paul  
29 Nov 89  
F. W. Meade, mps  
Sdo  
0955

24



4/5

ambush  
facility

people on top  
open to  
sky

II 156  
var 13

11/10/68  
 11/10/68  
 11/10/68  
 11/10/68  
 11/10/68

SVT

S2 D H EI T I AOL ADE/S

Tall  
~~Solid~~  
Solid

light  
color

hard

Structure

S4 Twisty, roman road, high places one side, drop off  
other side, metal "like" Psp underneath  
sloping space.

*[Handwritten scribbles]*



~~TOP SECRET~~

WORKING PAPER

TASKER

1. PROJECT: 8929.
2. ENCRYPTED COORDINATES: 291100/433974.
3. BACKGROUND: The Encrypted Coordinates represent a specific target at a given geographical location.
4. MISSION:
  - a. Describe the target at Encrypted Coordinates 291100/433974.
  - b. Provide sketches in support of your findings.

~~TOP SECRET~~

~~SECRET~~

WORKING PAPER

TASKER

1. PROJECT: 8929.
2. ENCRYPTED COORDINATES: 291100/433974.
3. BACKGROUND: The Encrypted Coordinates represent a specific target at a given geographical location.
4. MISSION:
  - a. Describe the target at Encrypted Coordinates 291100/433974.
  - b. Provide sketches in support of your findings.

~~SECRET~~