

Paul
2 May 88
Pt. Neade, MD
Solo/gabi
1049

This document is made available through the declassification efforts
and research of John Greenewald, Jr., creator of:

The Black Vault



The Black Vault is the largest online Freedom of Information Act (FOIA) document clearinghouse in the world. The research efforts here are responsible for the declassification of hundreds of thousands of pages released by the U.S. Government & Military.

Discover the Truth at: <http://www.theblackvault.com>

SVI

S2

D

A1

E1

T

I

ABL

Als

Structure
swope

hand

metal
wood
piece
splinters
flames
fire

A1 Bu
a little
swope
or ~~some~~ disturbing

ABL/B1
Reminds me
of Pearl Harbor

Billow
swope
flame

A1 B1
chids

S4/2 Attack involves the air



Dist. Water
point
↘



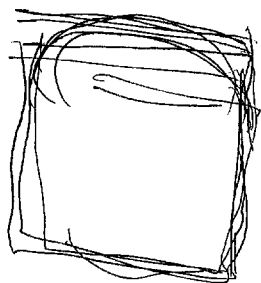
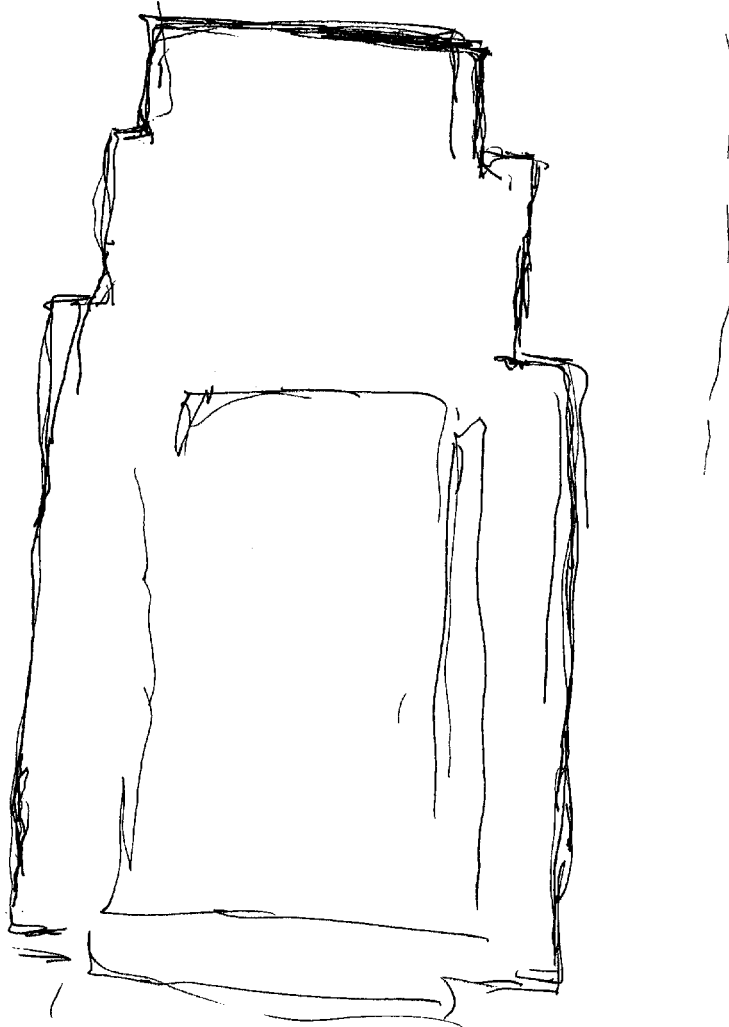
possible
works



but coming from
his direction



1



52

D

AI

EI

T

I

AOL

AS

54 1/2 Structure is dark neutral color, complex - with tall parts, corners, planes, frameworks, steps

AOL B1-
Ship

54 1/2 Structure viewed from top after incident reveals billowing dark smoke, licking flames, twisted distorted structural components, debris, very large jagged gap in roof, people outside, disoriented, disoriented, others moving forward for damage control/recovery/rescue.

AOL/D
Pearl
Harbour

1112