

This document is made available through the declassification efforts  
and research of John Greenewald, Jr., creator of:

# The Black Vault



The Black Vault is the largest online Freedom of Information Act (FOIA) document clearinghouse in the world. The research efforts here are responsible for the declassification of hundreds of thousands of pages released by the U.S. Government & Military.

**Discover the Truth** at: <http://www.theblackvault.com>

28 Apr 87  
Fr. Meade  
1015 hrs.  
ED.

NO A.V.  
~~P.F.~~: EDGNESS

672148  
779721

A: ACROSS  
SMOOTH  
RESIST  
B: \_\_\_\_\_

672148  
779721

A: ACROSS  
RESIST  
SMOOTH  
ITMUP  
B: LAND.

S2: OLL COLOR  
SMOOTH

CONF PKG.  
"SMOOTH" IS A  
SLIGHT/FEEL PACKAGE.

672148  
779721

A: RESIST  
LAND.  
B: LAND.

S2: SMOOTH  
DUNK COLOR  
GREENISH  
BROWNISH  
BRUSHY SMOKE

2

672148  
779721

A: ACCESS  
NISI  
HAND

B: \_\_\_\_\_

S2: SMOOTH  
BIG.

672148  
779721

F: ACRES  
ITAND  
SMOOTH

B: LAND.

S2: WHITE

RED BUK.  
LARGE COMENT  
ALSA.

672148  
779721

A: SCOPING  
ITAND  
ROUGH.

B: STRUCTURE.

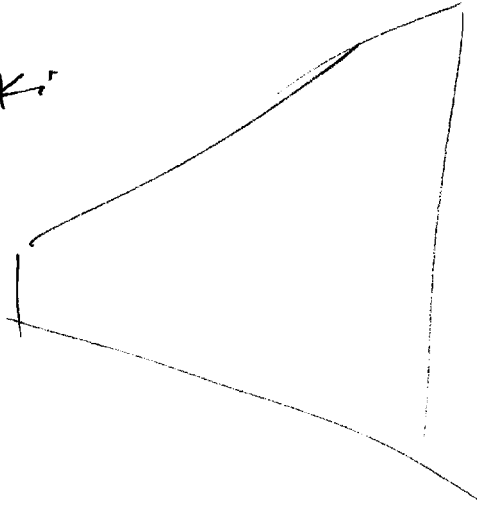
S2: WHITE  
KASPT  
ROUGH  
SCARCELY  
CHERRY TASTE

COXNINE  
SCOPING  
FLAT

FLAT  
FLAT

AND ONE.  
VIEWS VISUAL OF SLOPING  
TRIANGULAR - LOOKING WALL.  
MAY BE HORIZONTAL.

SKY



S4: OUTSIDE.

S2: D M R T I AND ALS.  
OUTSIDE

WHITES  
GLASS  
EQUILIB LIGHT.

NIGHTTIME.

GLASS LIGHTS.

COOL

HIGH

OPEN SPACE

TRUST SHOW OF WOT PROVISIONS AFTER MATN.

(4)

SL D NI O T I RZ R/S  
OUTSIDE.  
PARKOUT SHOW.

R/S  
ROCKY VARIOUS  
IMAGES OF A  
FENCE (WALLS).

INTERNAL SUMMARY:

~~STATE~~ CONCRETE SURROUNDINGS AND A PROUD  
OPEN AREA, LEARNING WHITE IN DAYTIME, AND  
BIT BY HAIR, LEARNING LIGHTS AT NIGHT. AREA  
IS NOW A STRUCTURE.

SKETCH AT AREA #3, 5TH FLOOR.

SL O NI O T I RZ R/S

SMALL  
CHAMPION (LIGHT)  
DARK  
PARK WALK

~~STATE~~ AT BUNK:  
FELT LIKE I STUBBED MY TOE ON FIXED  
"THING" RUNNING ALONG EDGE OF ROOM.

SK:

~~SKETCH~~ A: AREA #3, 6th FLOOR.

S2 D RI SL T I ACN NLS.

WIDS

LEFT

LARGE

NOISY

CLUTTER OF NOISES

ACN BULL  
CAFETERIA

SKETCH A: AREA #3 6th FLOOR.

S2 D RI SL T I ACN NLS.

CLINKING SOUNDS  
SMALL MOTOR SOUNDS.

ACN BULL.  
LIKE A KITCHEN  
MIXER.

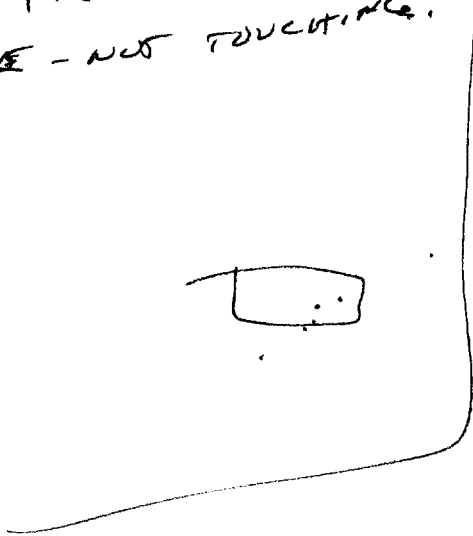
S 4 1/2: | FOR THAT THIS PLACE HAS A  
"LAB" OR "WORKSHOP" FEELING, BUT KEEP GETTING  
KITCHEN-RELATED OBJECTS.



SOMEWHAT STRUCTURE FOR.  
FCD-1

SL      D      AL      SL      T      I      ALL      A/S.

COMMON  
AWAY FM COMMON  
CLOSE - NOT TOUCHING.



A/S.

MUSIC : "ONE IS THE LOWEST NUMBER"





SEARCH STRUCTURE FOR FCD-1

SZ D M O T I RAL SLI

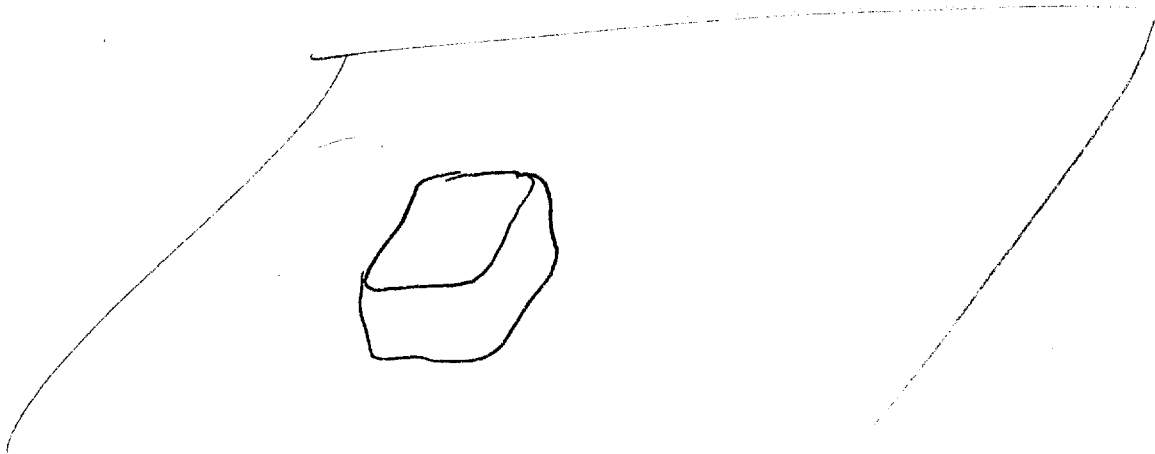
CUBIC

SOLID

ROUND - 50459

SY 1/2 IMPRESSION THAT THIS AREA IS DIFFERENT FROM REST OF STRUCTURE - IT LOOKS "ONCASO" IN ITS OWN "BOX".

SF:



DESCRIPTION AREA FCD -1

\$2 D M O T I ALL R/S.

MUSIC SOUNDS.

PEOPLE "

"CLINK"

SOUND OF WOOD HITTING WOOD, (GOLDEN THUNK)

MAN

LT. WAGON

R/S.  
VARIOUS IMAGES OF MAN IN  
LT. WAGON CLOTHES STANDING  
BESIDE BLACK TRUCK COUNTRY,  
BANKING SOMETHING UP + DOWN.

BREAK 1058.

?

RESUME 1108.

56: STRUCT STRUCTURE FOR FCD -1  
( FLOOR PLAN OF BLOC PROVIDED)

SL D M ST T ( NWL A/S.

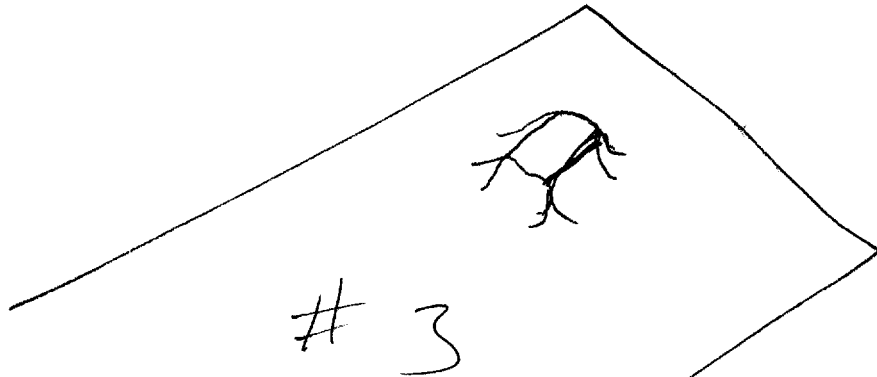
SMOOTH

RAISED  
ROUNDED CORNERS.  
COVERED  
ENCASED  
ENCLOSED

WASY  
"SOOTY" COVERING

FOR BUK  
LEAD

SK'. FLOORING OF "RAISED AREA"



~~AP/S~~

AREA seems to be enclosed in a low  
cushioning.

S4: INSIDE FICD - 1

S2: D AL ST T L ACW W/S.  
PERSON

SITTING

PAIN IN ARMS,  
TRYING TO ~~KEEP~~ MIND + CONT.

LOW BACK  
BLACK MATR

CLOTHES

LOOSE  
DARK, SOLID COLOR.

PASS.

PERSONS  
FRUSTRATED

ACW DMK.  
S.A.M.  
ACW DMK.  
SOVIET  
PARAPSYCHOLOGICAL  
PROJECT.

S4: INSIDERS FCD-1

S2 D NI 87 T L MR etc.

ACTIVITIES.  
INTERACTION  
~~SOUNDING~~  
~~TRIP~~  
ASSISTING.

PROCESS  
STOP-BY-STOP  
ASSUMING.

S 4 1/2: IMPRESSION THAT ONE PERSON IS  
ANOTHER, BY MOVING BACK & FORTH  
"THINKS" AND AND THE PERSON, WHO  
SITTING IN THE OPEN.

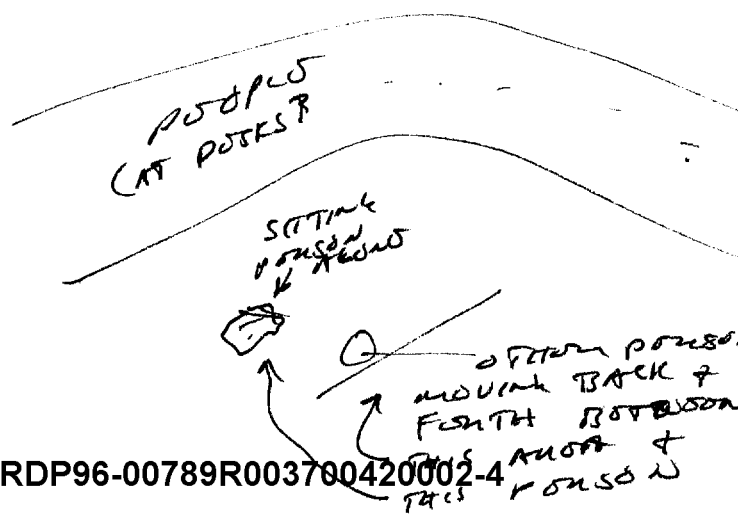
ASSISTING  
BETWEEN  
IS JUST

LIQUIDS.  
CONTAINERS.

SMALL  
OPEN

LOUD NOISE (BOOMING GAZE)

SKE:



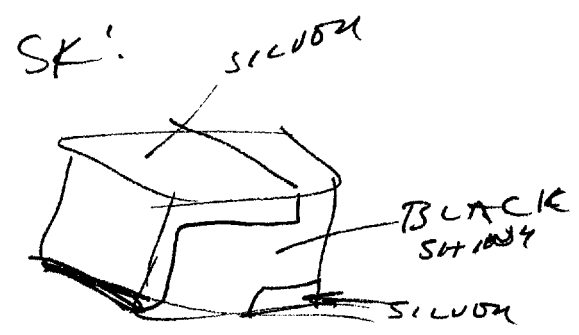
S4: PEOPLE AT DESKS.

S2    0    M    02    T    1    ADL    W/S.  
PEOPLE    HANDLING THINGS  
"STUFFING ENVELOPES"

~~SECRET~~

S5:  
ENVELOPES  
PRIOR EXAMINATIONS?  
MAYBE COLOR.  
CRACKLE SOUND  
THINK INSIDE

S6:  
THINK  
PRIOR EXAMINATIONS?  
SMALL  
BLACK  
SILVER  
PLASTIC FOR.



S4: THINK

S2 O M S T I ROL R/S.

THINK

S4 1/2: STRONG IMPRESSION OF A FILM PACK.

THINK

DATA

S4: WHAT IS IT GOING?

S2 D M S T I ROL R/S.  
DATA

S4 1/2 IMPRESSION TAKE IT IS GOING TO A LIBRARY / REPOSITORY.

S4: WHAT DOES IT POINT TO?

S2 D M S T I ROL R/S.  
CLOSER SMART

DIM LIGHT.

ROL ROL.  
SEEING UNUSUAL LIGHT THROUGH A SLIDE.

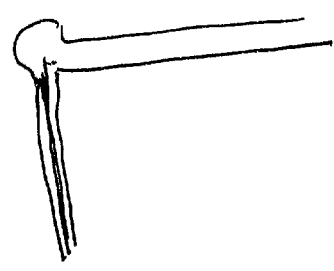
~~DIAGRAM~~  
R/S DIAGRAM

S4: DESCRIBE THE DIAGRAM.

S2: D M A S T I FOR A/S.  
DIAGRAM

DRAFTING  
BLUEPRINT.  
MECHANICAL DRAWING

SK!



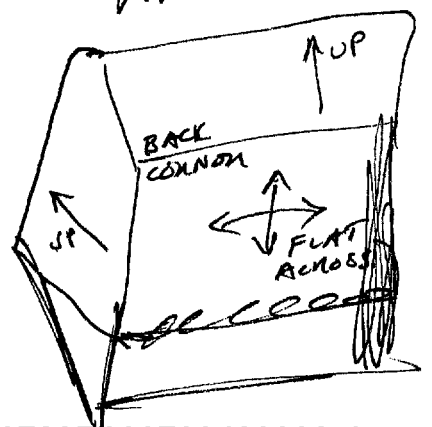
S4: DESCRIBE THE DIAGRAM IS DF!

S2: D M A S T I FOR A/S.  
ACTUAL  
THICKNESS

HAND  
TALL  
SMOOTH

ONE-PIECE CONSTRUCTION

A/S SKETCH:





S4: DESCRIBES ACTUAL THINK:  
SL 0 K1 07 T 1 R02 A/S

ACTUAL THINK

FUNCTION INCREASING PRODUCTIVITY

ENERGETIC FORCE

S4 1/2: IMPRESSION OF "SCOOPING" / "SCARPING" / "CAPTURING"

R02 R0K, WIND FOLK

R02 R0K, NORMAL CORNER REFLECTOR.

R02 R0K, LARSON REFLECTOR.

S4: ORIGIN OF FILM.

SL 0 K1 07 T 1 R02 A/S

S4 1/2 ALMOST ALL IMPRESSION OF WASHINGTON D.C. STRENGTH ORIGIN.

S4: LOCATION OF ACTUAL THING  
 S2 D AT ST T I OR etc.  
 ACTUAL THING

AIRPLANE SOUNDS.  
 DRY AIR  
 SUNNY  
 DRY  
 HOT  
 OIOW

HOT  
 COOL  
 HOT AIR

~~S4~~ R/S  
 OF WORKMEN  
 VARIOUS BUT STRONG VISUAL  
 INSIDE A HANDED.

S4: HOW DID DISAPPEAR GET INTO PICTURE!  
 S2 D AT ST T I OR R/S.  
 PERSON

BLACK SUIT  
 RUMPLED COCK  
 WERE PROSSER  
 PISTOL OR  
 NOT NOTS.  
 SWEATY  
 HOT

MAN.

SUMMARY: AREA OF "PEOPLE AT DESKS" HAS A PERSON WHO IS PLACING WHAT LOOKS LIKE A

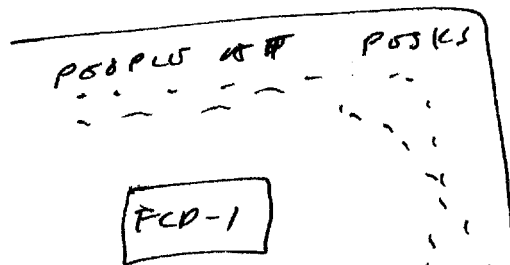
FILM CONTAINER INTO AN ENVELOPE. THE CONTAINER HAS A DIAGRAM ON

FILM WHICH SHOWS A "CORNER-REFLECTOR-SHAPED" (A CORNER OF 2 WALLS ~~AND A FLOOR~~ + A FLOOR) OBJECT.

THE OBJECT, ITSELF IS LOCATED IN A PLACE WHICH HAS ~~THE~~ AIRPLANE SOUNDS & WORKMEN.

THE PHOTO OF THE DIAGRAM WAS TAKEN BY A VERY WELL-DRESSED, BUT DISHOULDER MAN.

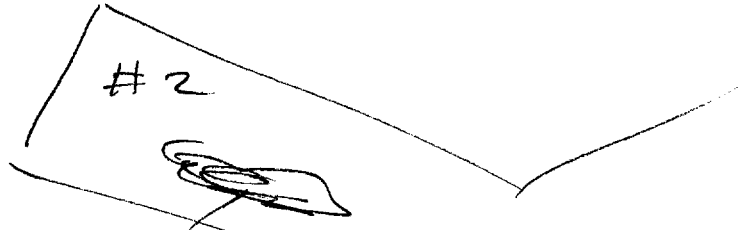
I KEPT LETTING FCD-1 AS AN ENCLOSED/ UNENCASOD AREA IN THE CORNER OF AREA<sup>th</sup>, BUT NOT TOUCHING THE OUTSIDE WALLS. THE "PEOPLE AT DESKS" ARE LOCATION BETWEEN WHAT I PERCEIVED AS FCD-1 AND THE OUTER CORNER WALLS OF THE BUILDING



I PERCEIVED FCD-1 AS HAVING 2 PEOPLE - ONE SITTING ALONG IN THE OPEN, TRYING TO CLEAN HER MIND, AND ANOTHER WALKING BACK & FORTH BETWEEN HER & AN AREA WHICH I THINK (SEE: ~~AREA~~ EQUIPS) AND LOCATED.

36: DOWNS DIRECTION TO  
LOCATED DIRECTION

1 LOCATED AN IMMEDIATE DIRECTION IN  
AREA #2,



SOMEWHERE IN HERE

BUT AN <sup>ADDITIONALLY</sup> MORE DISTANT DIRECTION LOCATED  
IN AREA #4, AS WELL.

SESSION END  
1204