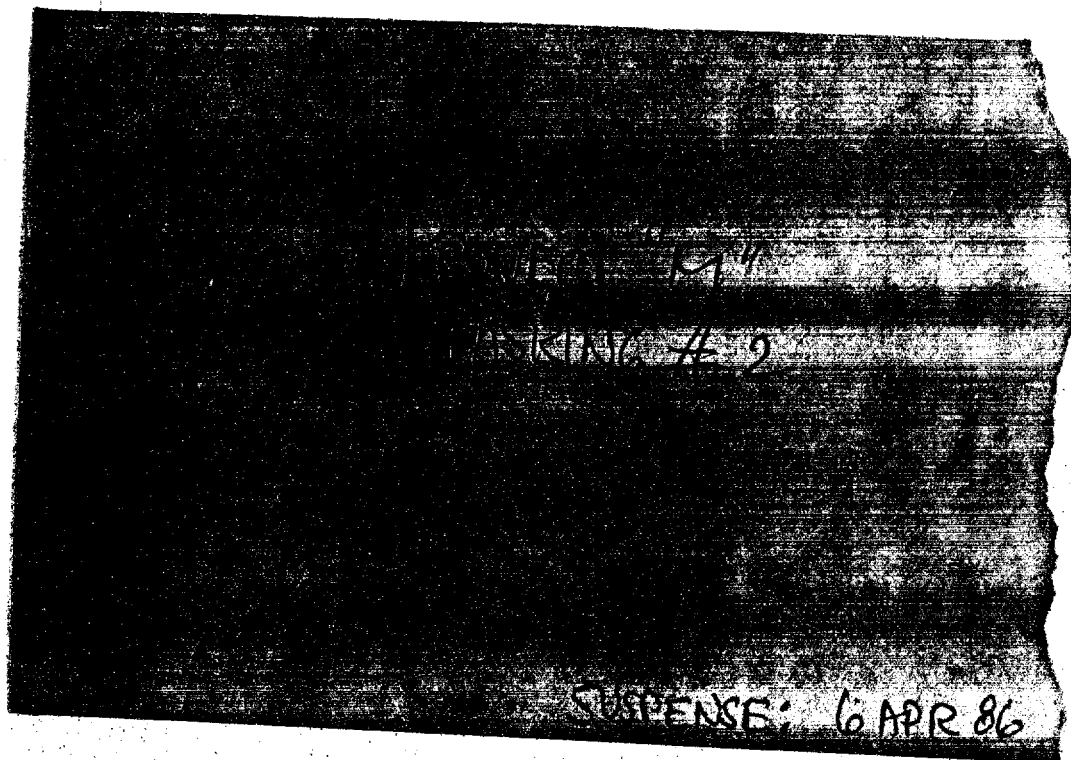


TASKING # 2

DESCRIBE THE VEHICLE(S)
OF SPECIAL INTELLIGENCE
INTEREST AT

182478 / 836131



This document is made available through the declassification efforts
and research of John Greenewald, Jr., creator of:

The Black Vault



The Black Vault is the largest online Freedom of Information Act (FOIA) document clearinghouse in the world. The research efforts here are responsible for the declassification of hundreds of thousands of pages released by the U.S. Government & Military.

Discover the Truth at: <http://www.theblackvault.com>

6 APR 87

FLAT SLIGHTLY ROBBING
LANDSCAPE, LOOKS SOMEWHAT
BARREN. BUILDING IS NOT
NEAR AS LARGE AS I
THOUGHT LAST TIME. THERE
IS ANOTHER STRUCTURE
A WAYS AWAY. IN THE
BACKGROUND IS A STEEP
ROCK FORMATION (SEE SKETCH)
THERE IS AN OPENING
IN ROCK (SEE SKETCH). AT
THIS POINT I TOOK A
SIDE TRIP, DO NOT KNOW
WHERE I WENT. GOT BACK
IN CONTROL AND ENTERED
OPENING. NO PEOPLE OR
SECURITY AT THIS POINT.
MOVED ACROSS FLAT FLOOR
AREA IS DARK BUT NOT

PITCH BLACK, MOVED ACROSS
FLOOR TO WOODEN STEPS.

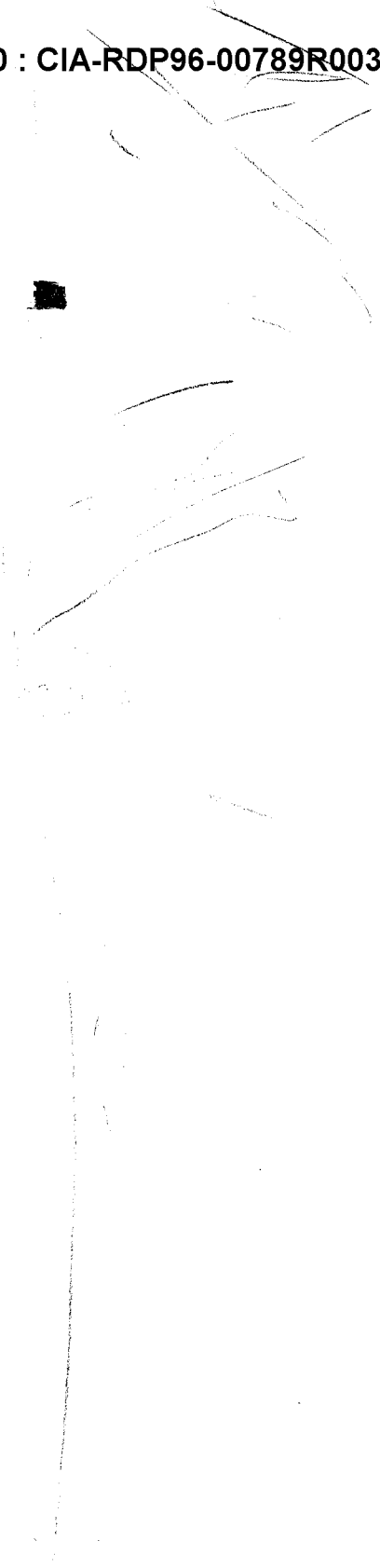
STEPS LEAD DOWN ONE LEVEL
(4 OR 5 METERS) TO A LIGHTED
AREA. TABLE AT THE SIDE
OF AREA. BRAY WORK TABLE.

MOVE DOWN TO TAKE A
LOOK AT ACTIVITY. ENVELOPE

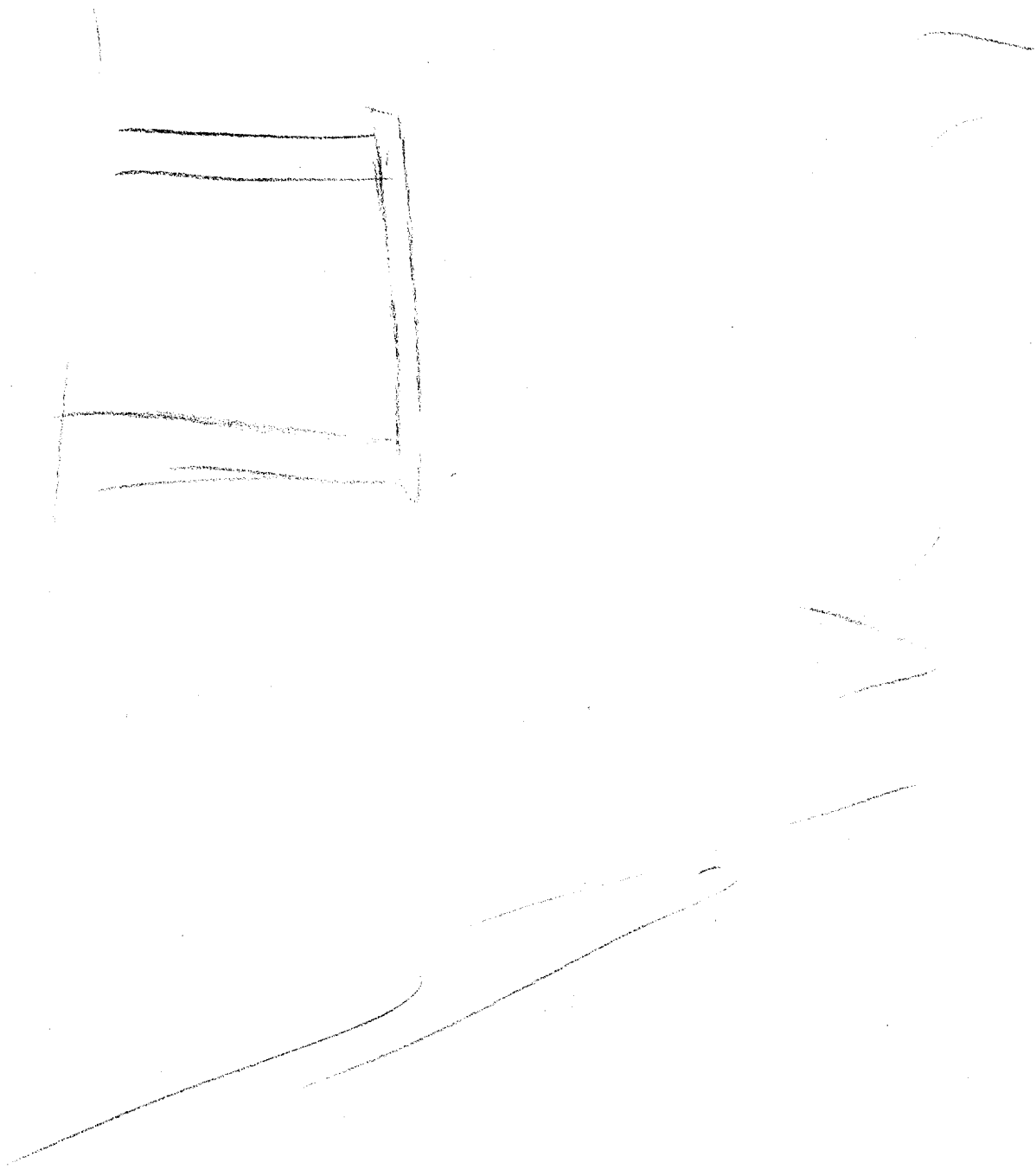
JUMPS IN MY HAND. FEEL
A TUG. I INSTANTLY
RETURN TO ROOM AND
TURN LIGHTS ON. MAKE
A QUICK CHECK AND THEN
MAKE A COMMAND DECISION
TO RETURN TO OTHER BUILDING
WHERE THERE ARE PEOPLE.

NOTE: LAST FRIDAY AM
I THOUGHT I HEARD A VOICE
BUT IGNORED IT TO GET TO

Can fact attempts--



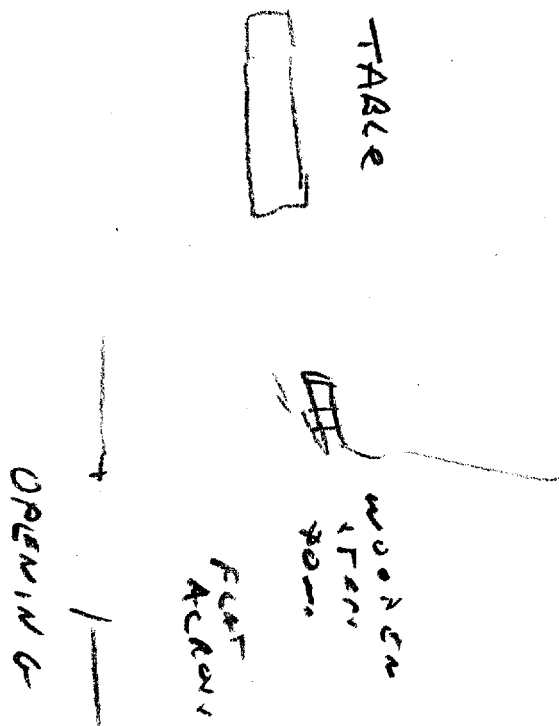
LANDSCAPE
WITH ROCK
FORMATION



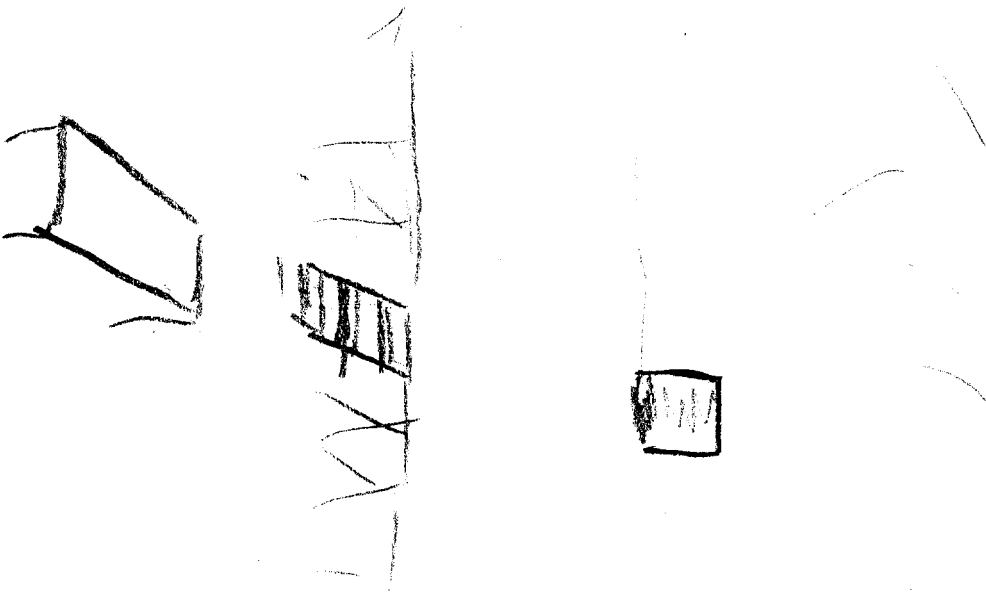
ROCK
FORMATION

W. TIT

DOOR / OPENING



INSIDE
ROCK



INSIDE
LOOKING
BACK
AT
OPENING