

do not know what it does?

- Determine for whom

- Determine why (purpose + reach)

CHANNELS ONLY

REAK (U)

URES REPORT

SOURCES AND METHODS INVOLVED

WARI

*no decision
important meeting
Oct 29 or 30
KJ's question
should not be
other source
138*

CONTROL NUMBER: 8713

NICKNAME: None

DATE OF SESSION: 5 Oct 87

TARGET COUNTRY: Unknown

REFERENCES: None

SESSION NUMBER: 01

DATE OF REPORT: 7 Oct 87

MISSION STATUS: Continuing

TECHNIQUE UTILIZED: ERV

SOURCE IDENTIFIER: 003

1. (S/NF/SK) INTERVIEWER TASKING: This is the initial session of a new project conducted utilizing this Source. Specifically the Interviewer is to task the Remote Viewing Source to provide data on a specific site to include the general external configurations purposes of any structures and objects at the site and data pertaining to the development and utilization of materials/objects at this site. The Interviewer has still not been made cognizant of the true nature of this site. The Interviewer utilized the encrypted coordinate of "14752/1213," which is a departure from accepted protocols of two six digit coordinates. There were no indications that shortened coordinates had any noticeable affect on Source's performance in this session and He was able to quickly adapt to this rather small departure from past procedures.

2. (S/NF/SK) SOURCE TASKING: Source was specifically told that this "will be a new operational mission. You have not worked it before. I want you to be prepared for unusual coordinates. This should not affect you". Source was not provided with any further cues or descriptive data pertaining to this target prior to the session. This session was conducted utilizing Extended Remote Viewing (ERV) protocols in its entirety.

3. (S/NF/SK) INCLEMENCIES: There were no reportable incidents or anomalies which may have influenced the data obtained in this session.

4. (S/NF/SK) SUMMARY: Source furnished the attached summary which was prepared following the session and submitted to the Interviewer ~~four~~ ^{two} days following the session. The completeness of the typewritten summary has been compared to the Interviewer's notes and all

ok!

This document is made available through the declassification efforts
and research of John Greenewald, Jr., creator of:

The Black Vault



The Black Vault is the largest online Freedom of Information Act (FOIA) document clearinghouse in the world. The research efforts here are responsible for the declassification of hundreds of thousands of pages released by the U.S. Government & Military.

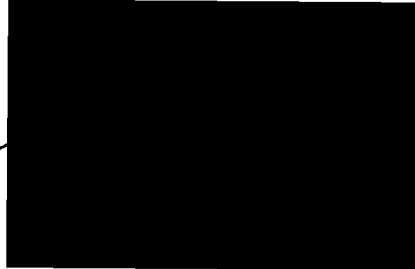
Discover the Truth at: <http://www.theblackvault.com>

~~SECRET~~ NOFORN -- SKEET CHANNELS ONLY

omissions, changes, and/or corrections have been verified as acceptable by the Interviewer. The information provided in the summary was found to be a complete accounting of the data provided by the Source during the session and did not require further modification, clarification or additions by the Interviewer.

5. (S/NF/SK) COMMENTS: Source's impressions and post-session summary leave no doubt that His initial images are of a maritime vessel of some sort with strong overtones of a military or government purpose. In future sessions these impressions will not be stressed in an attempt to permit Source to deliver subsequent reporting data which may or may not tend to reaffirm these initial impressions.

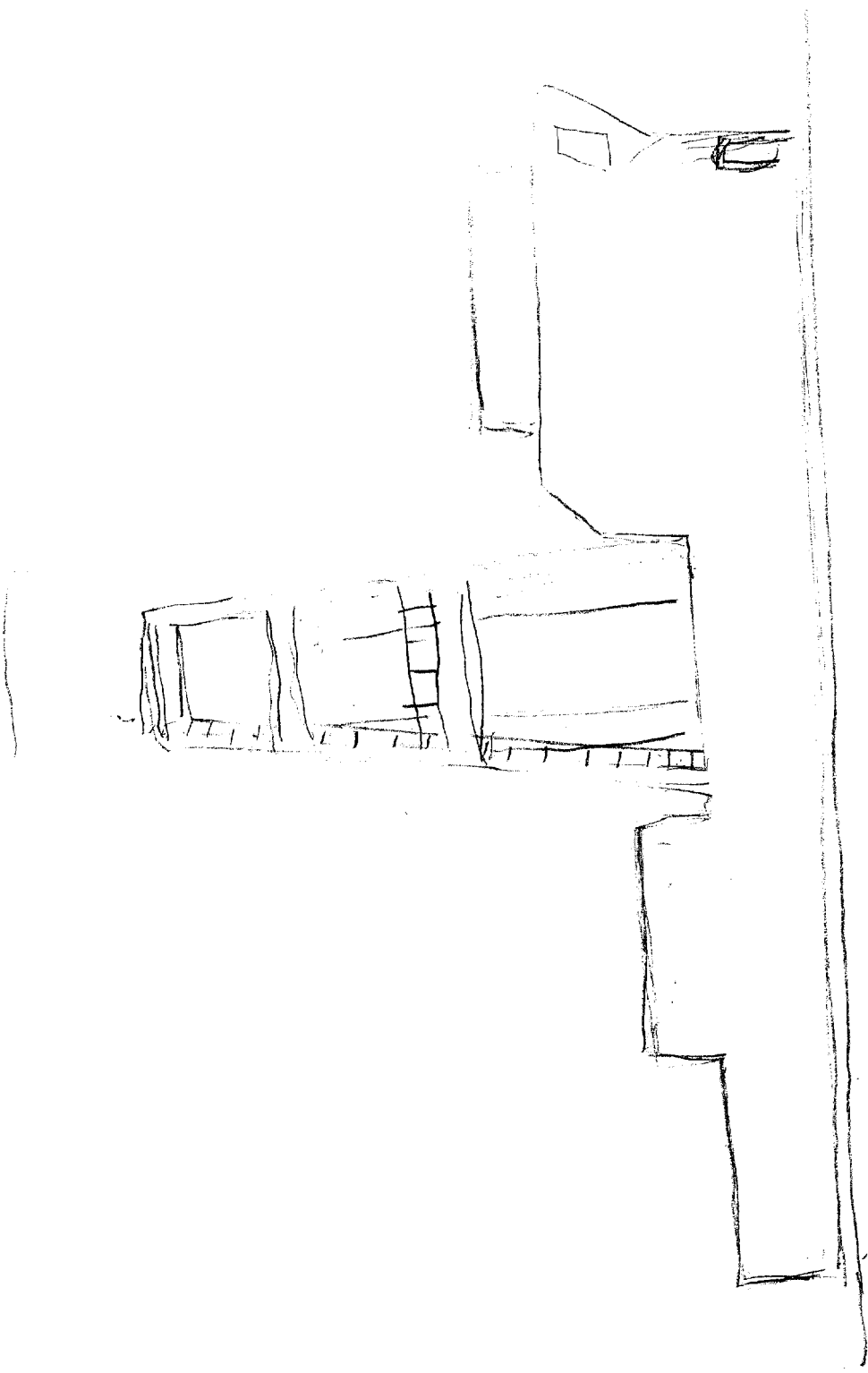
SGFOIA3



Summary

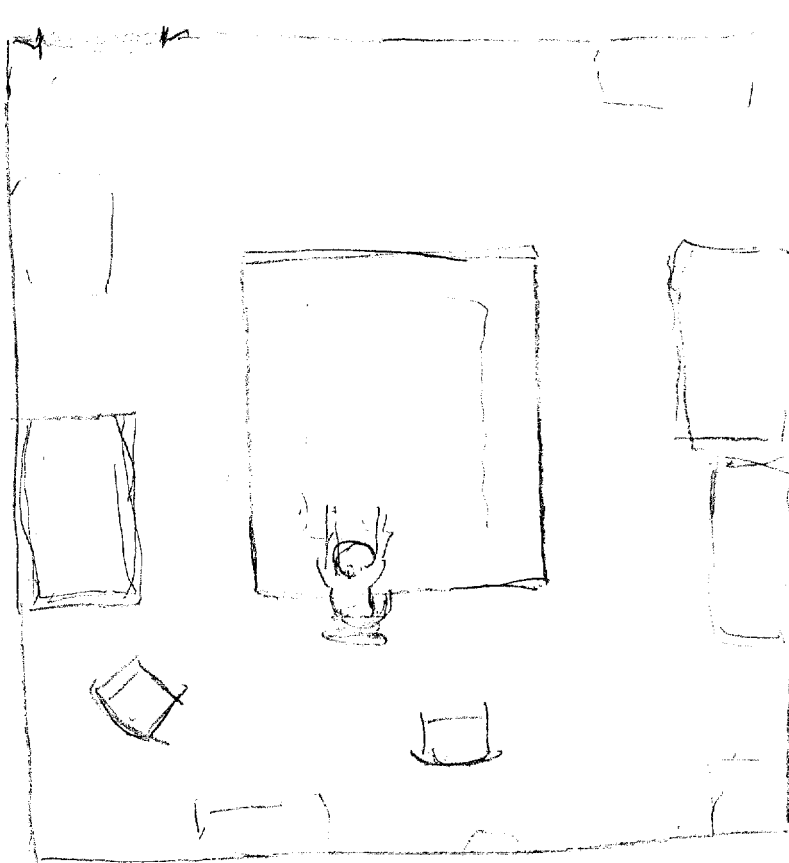
Site involves a structure that is smooth, grey, metallic, involving a tall, airy, tower-like portion that reminds very strongly of the superstructure of a warship. Access to the main structure is limited to a few easily-securable doors. Red is a color important to the site. There is some black trim and white details to the structure, and it is longer than it is wide, with different portions being of different heights, according to need, but all integrally connected. Many rectangular forms, some parts slope inward, others slope towards the top; some are strictly vertical or horizontal. The "roof" is generally flat on all portions of the structure, though many parts project here and there above the "roofline". There are railings and other portions that are "like" scaffolding. The overall purpose of this is official, governmental functions. It's not private--may even be military. Metal seems to be the primary constituent in the construction of this site. Inside it is dim in some places, light in others. Little rooms. There are halls, with rooms off the halls; very "business-like" here; everything is neat, where it's supposed to be. This place directs activities; these activities are widespread, over a wide but regional geographic area, some sort of direct activity, organized. Activity has to do with groups in outlying areas, but still organized. People important to this place control the groups, which operate kind of like a franchise--the groups are semi-independent, have a lot of autonomy and latitude for action, but still are responsible to this central control, which exercises assigning, oversight, planning, and reporting responsibilities for the operant entities. There is a sense of being sanctioned and directed. The activity involves some sort of "protected interest," occurs some distance away, and is not always overt. Various brief images/AOLs--a man on an aircraft with a rifle; people inside the structure; impression of a radar dish. Inside structure is a large, almost square room with a large flat, square working area in the middle of it, "like" a plotting table. Chairs and various articles of furniture and stationary equipment ring this room. It is lit only with artificial light--seems not to have direct access to the exterior of the structure. A person is bending over the work area doing something with a large sheet of paper containing lines, letters and numbers. There are stacks of papers that are typewritten, ecco fasteners, notebooks. In one of the outlying groups there is a personality that stands out. He is kind of young, has fairly long, bushy, dark hair; is regarded as being quite competent but unpredictable. Coordination is necessary to keep things running properly; it does seem military here--organized, disciplined--but more freedom of action than the military among the outlying teams/groups. They don't stay in one place; they move continuously, stay in motion.

VIEWER 003



Structure (communication building)

*VIEWER 003
5 Oct '87
8713*



original signed

VIEWER 003
8713

'87

(2)

→ 14752 / 12 13

★ RED, LOTS OF RED, SOLID, UNIFORM STRUCTURE,

→ A UNIFORM STRUCTURE RAW DATA

★ SMOOTH, RAILINGS, LIKE SCAFFOLDING, TALL, METALLIC, MOSTLY GREY, BLACKS, PART REMINDS ME OF SUPERSTRUCTURE ON A SHIP, TALL IN SOME PLACES, *like*

→ A TELL ME ABOUT THE PART THAT REMINDS YOU OF A SUPERSTRUCTURE

★ TALL, STICKS UP, BRACED, AOL SIGNAL - SOMETHING AT THE TOP GOES AROUND, FUNCTIONAL, DESIGNED TO FULL A JOB, NOT MUCH ENERGY PLACED ON HOW ATTRACTIVE IT MIGHT BE

→ A CONTINUE TO TELL ME ABOUT THE STRUCTURE

★ METAL, SOLID, LIMITED ACCESS, NOT TOO MANY DOORS - INSIDE IS CRAMPED

→ A REMAIN OUTSIDE

★ BLACK TRIM ON PART, BLACK DETAILS, WHITE, ITS LONGER THAN IT IS WIDE, SOME PLACES TALLER, OTHERS, NOT SO TALL, OFFICIAL PURPOSE, GOVERNMENTAL FUNCTIONS, ITS NOT PRIVATE, MIGHT EVEN BE MILITARY,

→ A SHAPE

★ LOTS OF RECTANGLES, SLOPING, LEANS TOWARDS THE TOP, MOSTLY FLAT ON TOP,

→ A SHAPE CONTINUE

★ ITS LONG AND NARROW, RELATIVELY TALL AND THIN, TALL TOWER PART, FLAT TOPS ON THE STRUCTURE

(3)

(CONTINUED)

- ★ ... ADL OF SHIP -
- CHECK THE MATERIAL - FEEL THE MATERIAL
- ★ HARD, SMOOTH, BUMPY,
- BUMPY RAW DATA
- ★ GRANNY, BUMPY, NOT PLIABLE AT ALL,
- NOW MOVE INSIDE
- ★ DIM IN SOME PLACES, IN SOME PLACES IT LIGHT,
LITTLE ROOMS,
- CONTINUE TO DESCRIBE INSIDE
- ★ HALLS, ROOMS OFF THE HALLS, BUSINESS LIKE HERE, EVERYTHING
IS NEAT, WHERE ITS SUPPOSE TO BE, THIS PLACE DIRECTS
THINGS
- Things raw data
- ★ activities
- TELL ME ABOUT THE ACTIVITIES THAT INTEREST ME
- ★ WIDESPREAD, SOME SORT OF DIRECT ACTIVITY, ORGANIZED, ...
- focus on that activity, it ~~has to~~
- ★ (NOTE - SOMEONE CAME IN)
IT HAS TO DO WITH GROUPS, IN OUTLYING AREAS - ORGANIZED,
PEOPLE IMPORTANT TO THIS PLACE CONTROL GROUPS, KINDA OF
LIKE A FRANCHISE, THEY & ULTIMATE HAVE TO COME -
- Raw data

(4)

~~XXXXXXXXXXXXXXXXXXXX~~

- ★ Like the groups are semi-independent - do what they have to do, oversight, official feel, sanctioned, directed,
- Focus now on the purpose of this activity
- ★ A sense of protected interest,
- Purpose is important
- ★ AOL A guy sitting on airplane with a rifle or something, a image, people in this structure, --- activity happens some way away. Its not always overt - one primary group, but nobody knows about - protecting - impression of a radar dish - -
- Pause - work beginning to bounce - go to the structure - special activity - describe the area
- ★ Square, flat table, paper with lines, numbers, reminds me of a map. Big room, a lot of equipment around used to surveil, papers, typewritten, stacks, echo fasteners, notebooks - make sure things are kept on track, - There is someone here looking at the big sheet on the table - drawing lines, like a navigator, quiet right now, everyone is low key,
- Now describe the activity
- ★ There's outside activity, a long way away, some of it is closer, one major person in this group, dark hair, kind of young, activity is coordinated, seemingly covert,
- Purpose of the activity -

(5)

★ AOC of Persian Gulf stuff again. Like this group is coordinating smaller activities. Coordination is necessary to keep things running smoothly, it does seem military here, organized, disciplined but there ~~does~~ does seem to be more freedom of action than the military, outlining teams / groups don't stay in one place, they move continuously, stay in motion -

→ Pause -