

g
23 Oct 87?

~~SECRET~~/NOFORN - SKEET CHANNELS ONLY

PROJECT SUN STREAK (U)

CRV SESSION PROCEDURES REPORT

WARNING NOTICE: INTELLIGENCE SOURCES AND METHODS INVOLVED

CONTROL NUMBER: 8713	NICKNAME: None
DATE OF SESSION: 20 Oct 87	TARGET COUNTRY: Unknown
REFERENCES: None	SESSION NUMBER: 02
DATE OF REPORT: 23 Oct 87	MISSION STATUS: Continuing
TECHNIQUE UTILIZED: CRV	SOURCE IDENTIFIER: 003

1. (S/NF/SK) INTERVIEWER TASKING: This is the second session of a new project conducted utilizing this Source. In the initial session the Monitor was specifically directed to task the Remote Viewing Source to provide data on a specific site to include the general external configurations purposes of any structures and objects at the site and data pertaining to the development and utilization of materials/objects at this site. In this second session the Monitor was directed to obtain data pertaining to the specific current activity of the site, the purpose of that activity and its extend. The Monitor was still not been made cognizant of the true nature of this site. The Monitor was prepared to utilize the encrypted coordinate of "14752/1213," which is a departure from accepted protocols of two six digit coordinates. However, Source did not require a re-reading of the coordinates before beginning the session as He was able to re-acquire the appropriate signal line prior to the actual onset of the session and began reporting data immediately from the advanced stages of the Coordinate Remote Viewing (CRV) technique.

2. (S/NF/SK) SOURCE TASKING: Source was specifically told that this "will be a retargeting of a previously worked target in which you perceived a large structure with men working inside conducting activity which reminded you of a Combat Information Center." From this cuing Source was able to recall the site and to re-acquire the proper signal line. No other curing or descriptive data was provided to Source prior to or during the actual session. This session was conducted entirely utilizing CRV protocols.

3. (S/NF/SK) INCLEMENCIES: There were no reportable incidents or anomalies which may have influenced the data obtained in this session.

Continued

This document is made available through the declassification efforts
and research of John Greenewald, Jr., creator of:

The Black Vault



The Black Vault is the largest online Freedom of Information Act (FOIA)
document clearinghouse in the world. The research efforts here are
responsible for the declassification of hundreds of thousands of pages
released by the U.S. Government & Military.

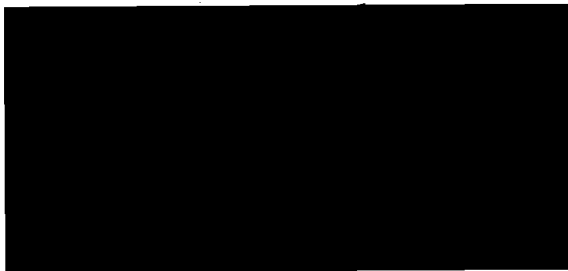
Discover the Truth at: <http://www.theblackvault.com>

~~SECRET~~/NOFORN - SKEET CHANNELS ONLY

4. (S/NF/SK) SUMMARY: Source furnished the attached summary which was prepared following the session and submitted to the Interviewer twenty four hours following the session. The completeness of the typewritten summary has been compared to the Monitor's notes and all omissions, changes, and/or corrections have been verified as acceptable by the Monitor. The information provided in the summary was found to be a complete accounting of the data provided by the Source during the session and did not require further modification, clarification or additions by the Interviewer.

5. (S/NF/SK) COMMENTS: Source's impressions and post-session summary following the initial session seemed to indicate His impressions were of a maritime vessel of some sort with strong overtones of a military or government purpose. In this second session these impressions were not as firm on the concept of a maritime target however the impression of a military feel seemed to persist. The structure being reported upon by this, and other, Source(s) tends to lean towards the image of a rather imposing building (ship?) in which men are actively involved in the preparation and planning for some type of military operations. There is a sense of tension and resigned expectation in the facility but the occupant seem to be prepared to accept (and repel?) any military operations against their facility and/or geographic area. There has not been a clear image of a specific object or objects with which these men might be involved.

SGFOIAS



Handwritten notes:
10/11/74
10/11/74
10/11/74
10/11/74
10/11/74

~~SECRET~~/NOFORN - SKEET CHANNELS ONLY

Summary

People are in a windowless room with at least two entrances in either wall. Central in the room is a large, flat work area or "table," while around the interior walls of the room are electronics and communications equipment. The people are watching, monitoring, and are tense, anticipating, expecting, nervous, and mildly fearful. They are waiting and watching, expecting something will happen, but must wait until it does, and then respond appropriately and react according to preset procedures. The structure within which they are is grey and white, angular, rounded, with levels. It is not symmetrical nor architecturally aesthetic--it's functional, almost "thrown together" according to purpose rather than tasteful design principles. It suggests an AOL of a mine tibble or superstructure at an open pit mine. It is raised up, or supported on something, and has an "industrial" sort of a feel--that is, it's mode of construction is very "heavy duty," with lots of metal in it, as well as levels, ladders, rails, and something "like" a catwalk. It is squarish, boxey, eclectic, and part of it overhangs another part of it. There are things on the roof suggestive of antennas, vents, or weather instruments. Present activities involve the people in the structure controlling, observing, calculating, "keeping track of." There is a pronounced military feel to the activity and location. However, this location has a sense of non-combat status but directing the activities of combat assets. No offensive capabilities seem present at the site itself--a "soft target"--command and control as opposed to operational. The people present are expecting a development, but are unsure if it will happen, when it will happen, how much will happen, and exactly what will happen. They have a general idea--what happens will fall into a certain category of possibilities--but they don't yet know specifically what form it will take. Meanwhile, they are directing outlying assets to maneuver into position or to prepare for overt operations, but actual directions to "go ahead" have not been provided. "Preparation," "wait-and-see," "just-in-case," "be alert," are all watchwords. People here are studying, looking, plotting, analyzing, calculating, organizing, recording, discussing and designating, but if what they are expecting should happen to be directed against them, they have no direct power to oppose it. The purpose of this specific site is preparation, planning, execution, defense, and offense (in the general sense for the last two). The impression is strong that the people here are involved in an hostile or imminently hostile situation. Fulfilling their duties by preparing for and directing offensive/defensive operations and monitoring overall situations for reporting up to those in overall charge of plans/resources/assets. This site is near a large quantity of water. It's area of influence/interest is vast, farflung in several cardinal directions. Land, air, and water all require attention. In the wide-spread geographical area involved are a "friendly" zone and an "unfriendly" zone, the interface between which is dynamic and flexible depending on current events and dispositions. Operations can be launched by various "operational" units on order, but other units are in preparation

*activity**no. 10000*

VIEWER 00-3

8713

①

stage or recuperation stage and cannot respond immediately. There is a pronounced sense that boats are involved at least sometimes, and maybe often, in the operations. Overhanging it all is the chronic sense that "something's about to happen."

The people present seem to be young and trained, relatively confident. Some degree of discipline is present, along with specialized roles, some technical. Uniforms are worn by at least some of the personnel. They are discussing amongst themselves what various interchanges of facts and observations mean, and how they should be reported. Some people here are "in-charge," not just of site but of wide area of "friendly zone." "In-charge" is not necessarily meant in a command sense, although that may be present, but certainly in the directive sense, such as in a staff setting. A major event concerning this site may occur in the not-too-distant future. This event may involve violent activity, loud noises, aircraft, surface vessels, small arms, combat, damage, and casualties all over the geographic area, but also at the site itself. The event will occur over a relatively extended time--hours or days rather than minutes, but will not consist of one major encounter but a bunch of smaller ones that blend into one.

VIEWER 003
20 Oct '87
87/3

Paul
20 Oct 87
Ft. Meade/IN
Gene
1005

APL ALS

52

yellow
red
green
smoggy

angular
corner

grey
light

smoggy
bubbles

musty
stuffy

circle

metallic

chaos
people

several

with
monitoring

equipment

electronics
communications

house
contaminating
suspectives

S2

12 Bx
excited
makes me feel
kegged up

S4 1/2 people are waiting & watching, knowing something will happen, but must wait until it does, & then respond appropriately & react according to set procedures.

structure (c)

leg
white
angular
rounded
bevel

railings

tan
wide
solid

S4 1/2 not symmetrical; not architecturally aesthetic; functional element "thrown together" according to purpose rather than fastidious design principles.

various
are a
little of
a mine-
tipple or
superstructure
at a large
mine of
some sort



301

4

S2

D

A1

F1

T

I

W/L H/S

raised up
supported

S2/H/S "Industrial" sort of a feel - heavy duty.
lots of metal construction. Levels; ladder;
rails. "like" catwalks.

Squirish
boxey
eclectic
overhang

S2/H2 judges on roof "like" weather gauge
or antennas or vents some motion
involved...
current activity (c)

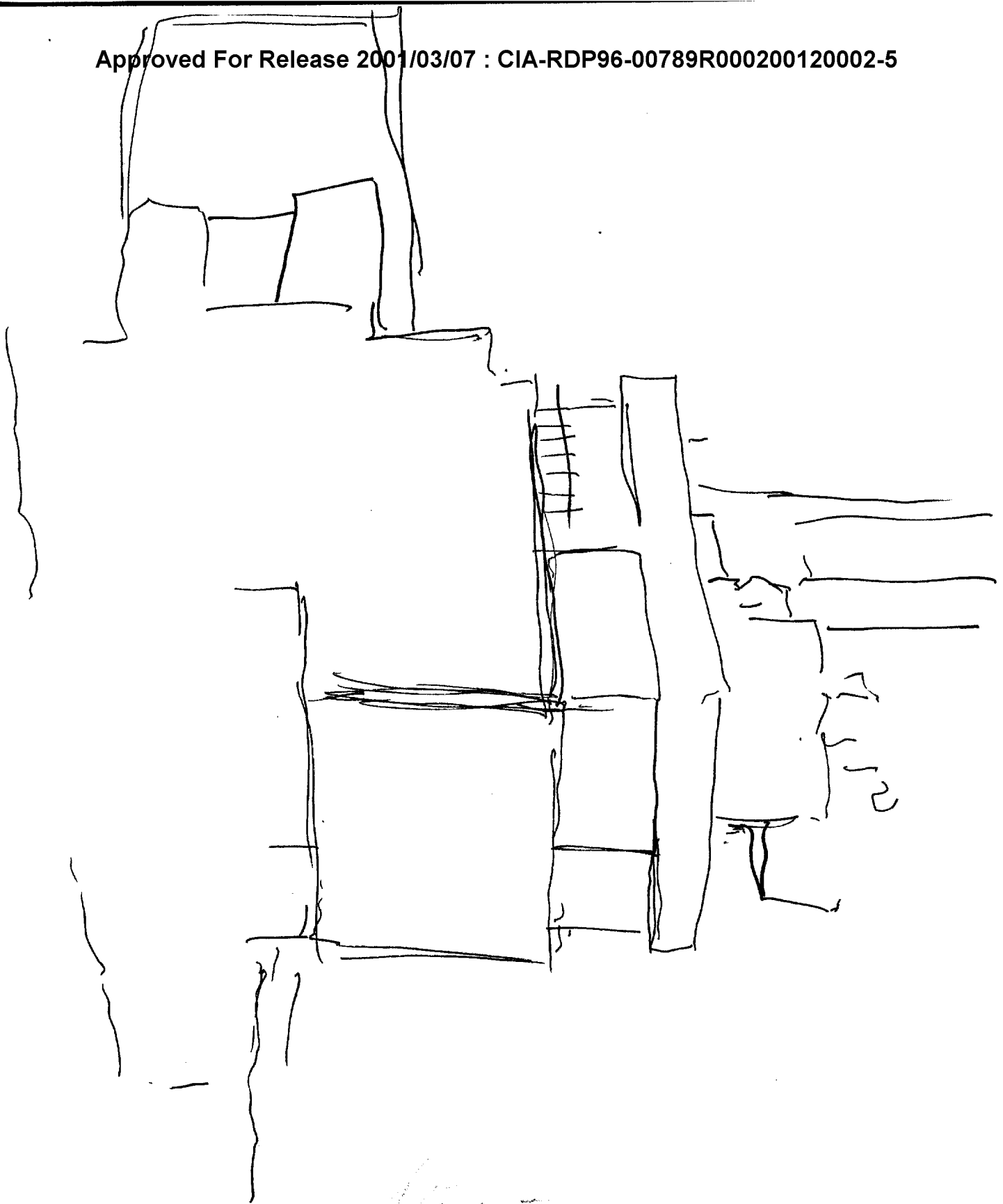
people

controls
observed
calculations
"keeps track
of"

military

S2/H2

military feel but this location has sense of non-combat
but directing activities of combat units. No officers
concentration at site. "soft target" - "C3" as opposed to operational.



*Structure
(Superstructure?)*

VIEWER 003

30 Oct 87
8713

SVI

52

D

M

EI

T

L

for the

54/2 people present are expertise & development, are unsure
 if it will happen, when it will happen, how many
 will happen, and exactly what will happen. Have
 general idea but don't know specifically. Meanwhile,
 they are directing outlying assets to warzone
 into position to prepare for overt operations,
 but actual directions to "go ahead" have not
 been provided. "preparations," "wait-and-see; just-
 in-case; be-alert -

person

- studying
- looking
- plotting
- analyzing
- calculating
- organizing
- recording

people

- discussing
- designating

anxious
 nervous
 mildly fearful

54/2 as it watches for something specific that if it
 happens they are prepared against.

52

D A2

507
E2

T

I

A2

6
A6

purpose(c)

preparation
plans &
execution
defense
offense

A/S/54

impression that people are involved in a hostile or
imminently hostile situation. Fulfilling their duties
by preparing for & conducting offensive/defensive
operations & monitoring overall situation for
reporting up to those in overall charge of
plans/resources/assets.

lots
water
near

A2 Bk
Persian
Gulf
area

SUI

52

D

A2

E2

T

I

per

7

AB

extent of activity (c)

farther

west area

land

water

air

cardinal directions

⊙

Su's geographically wide spread; huge area involved; "Friends" zone + "unfriendly" zone, but interface between the two is dynamic + flexible depending on current events + dispositions. Operations can be launched by various "operational" units on order, but other units are in preparation stage or recuperation stage + some cannot respond immediately.

Su's - always chaotic sense that "something's about to happen."

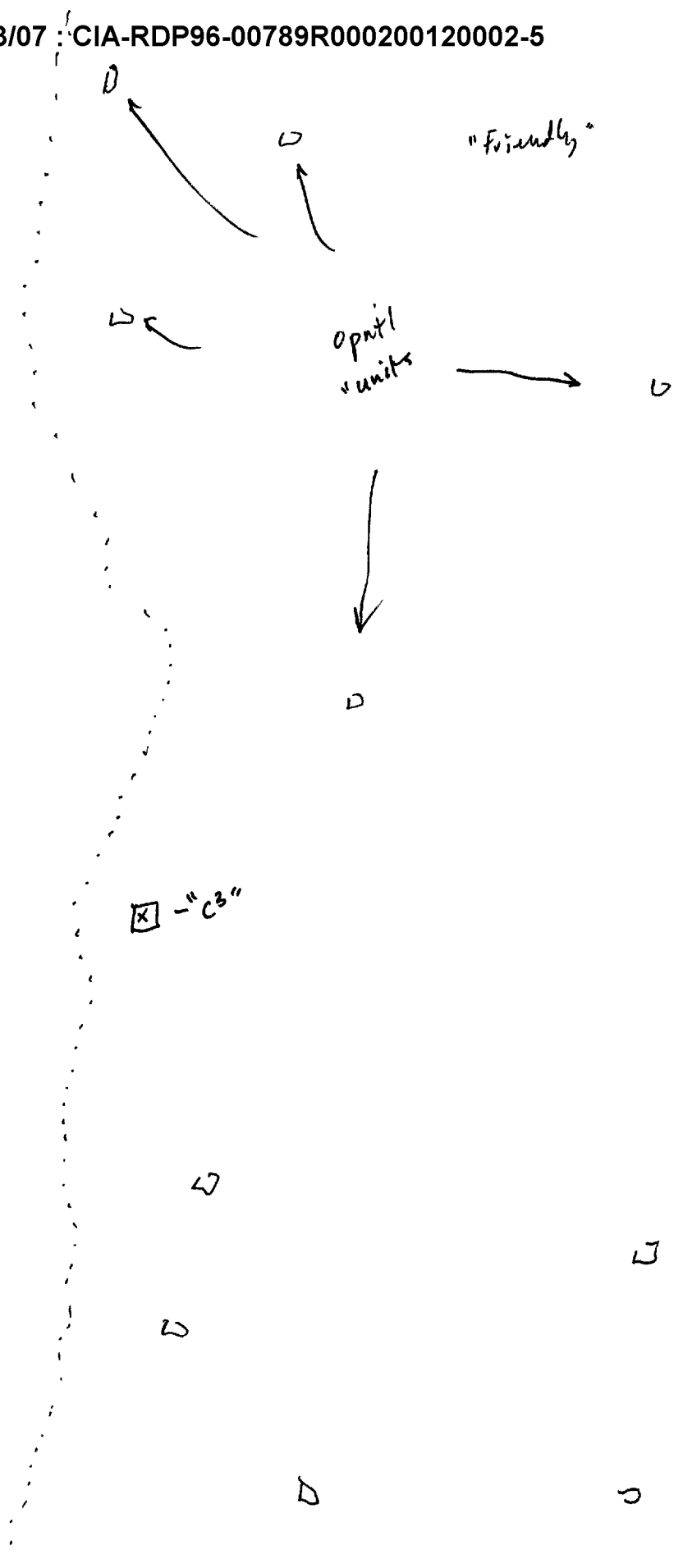
dog
inv

Fa



"unfriendly"

"friendly"



☒ - "C3"

SUI

8

22

D

H2

F-1

T

I

HOL

ALS

people (c)

young
trained

relatively
confident

discipline
specialized
roles

technical

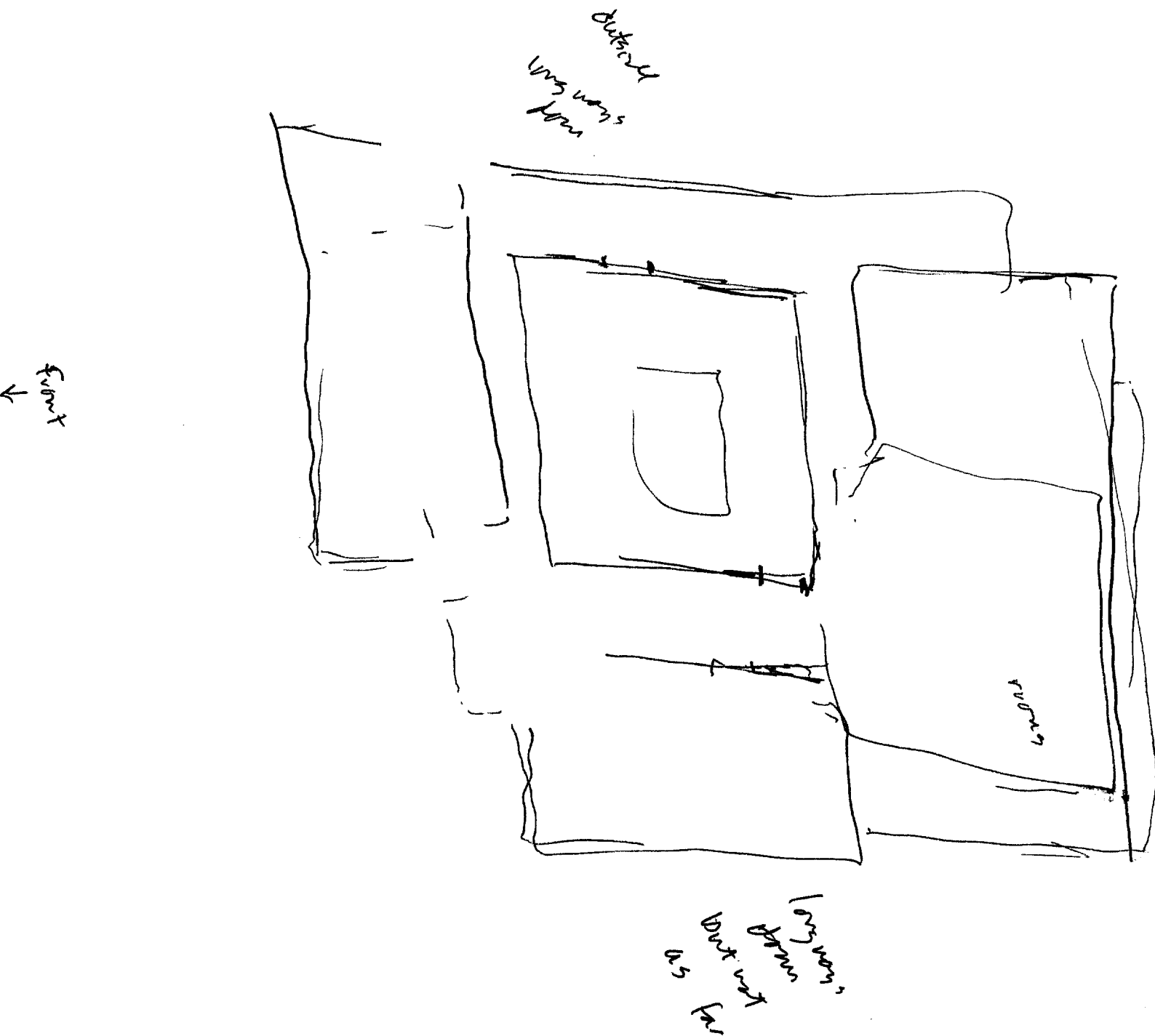
uniforms

Self

discuss amongst themselves what various facts +
observations mean, how they should be interpreted, and
how ^{whether} they should be reported. Some people here are "in-charge"
not just of site but of wide area of "friendly zone."
"In-charge" not necessarily in command sense, but certainly
in directive sense. "like" staff setting.

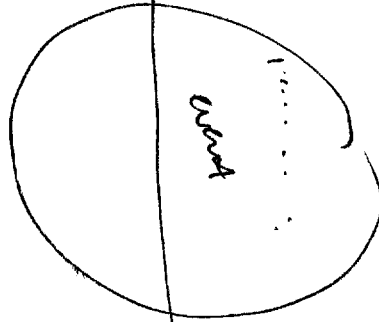
internal
layout (c)

lots of
commo equipment



10
05
87

81



10
05
87

SUI

52

D

A2

E1

T

I

DEL

A2

Event

major

5 1/2 days. alot happens. Impression of violence / combat / damage, casualties all over geographic area, but also to immediate site itself. Aol/s aircraft; explosions; small arms; surface vessels. Occurs over a relatively extended time - i.e. days instead of minutes a "part wales" encounters with hot one huge conflagration but a band of smaller which blend into one.

1059